

TOWN HWY. No.	LENGTH IN MILES		TOWN HWY. No.	LENGTH IN MILES	
	CLASS 3	CLASS 4		CLASS 3	CLASS 4
9	0.75	(0.92)	37		(0.79)
10		(0.30)	38		(0.40)
12		(0.10)	39	1.43	
13	2.82		40	0.02	
14	0.95		41	3.38	
15	2.90		42	1.85	
16	0.20		43	1.10	
17	1.25		44	1.71	
18	0.50		45	0.55	
19	1.98		46	1.70	
20		(0.32)	47		(0.40)
21		(0.06)	48	0.52	
22	0.65		49	0.20	
23		(0.62)	50	0.83	
24		(0.55)	51	0.35	(0.03)
25		(0.30)	52	0.07	(0.17)
26	0.93		53	0.05	
27		(0.25)	54	0.03	(0.12)
28	0.08		56	0.15	
29	2.24		57		(0.03)
30	0.07		58	1.47	
31	0.31		59	0.14	
32	0.43		60	0.15	
33	0.10		61	0.35	
34	0.20		62	0.09	
35	0.13		63	0.90	
36	0.16		64	0.15	
TOTAL			33.84	5.36	

MILEAGE SUMMARY

CLASS	TH	LENGTH IN MILES
CLASS 2		
TH-1	2,380	
TH-2	4,950	
TH-3	1,400	
TH-4	1,240	
TH-5	3,410	
TH-6	1,100	
TH-7	1,950	
TH-8	1,030	
TOTAL CLASS 2		17,460
CLASS 3		
TOTAL CLASS 3		33.84
TOTAL TOWN		51,300
STATE HIGHWAY		
VT-5A	0.657	
VT-114	5.013	
TOTAL STATE HIGHWAY		5,670
US HIGHWAY		
US-5	4,320	
TOTAL US HIGHWAY		4,320
TOTAL STATE		9,990
TOTAL, TRAVELED HIGHWAYS, FEB. 10, 2020:		61,290

(Excludes Class 4 and Legal Trail Mileage)

LEGAL TRAIL

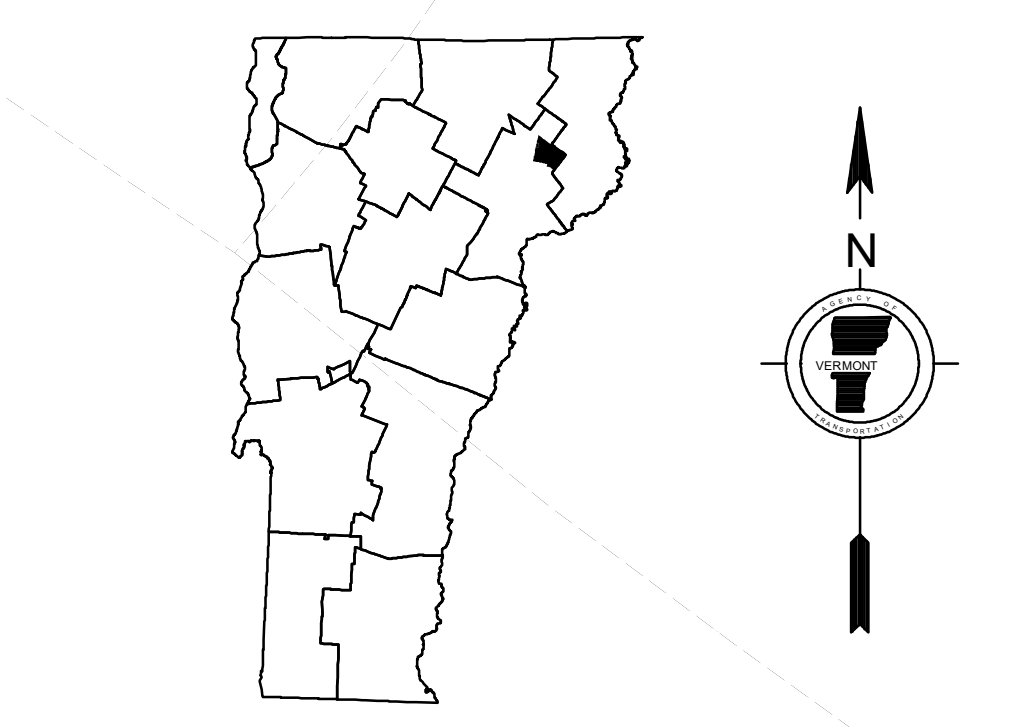
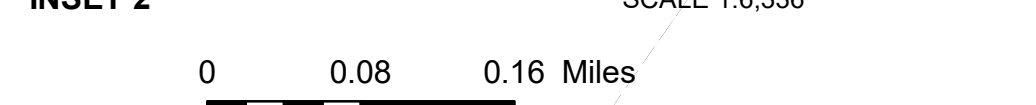
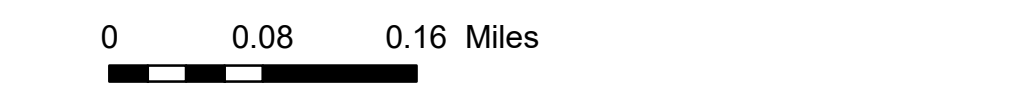
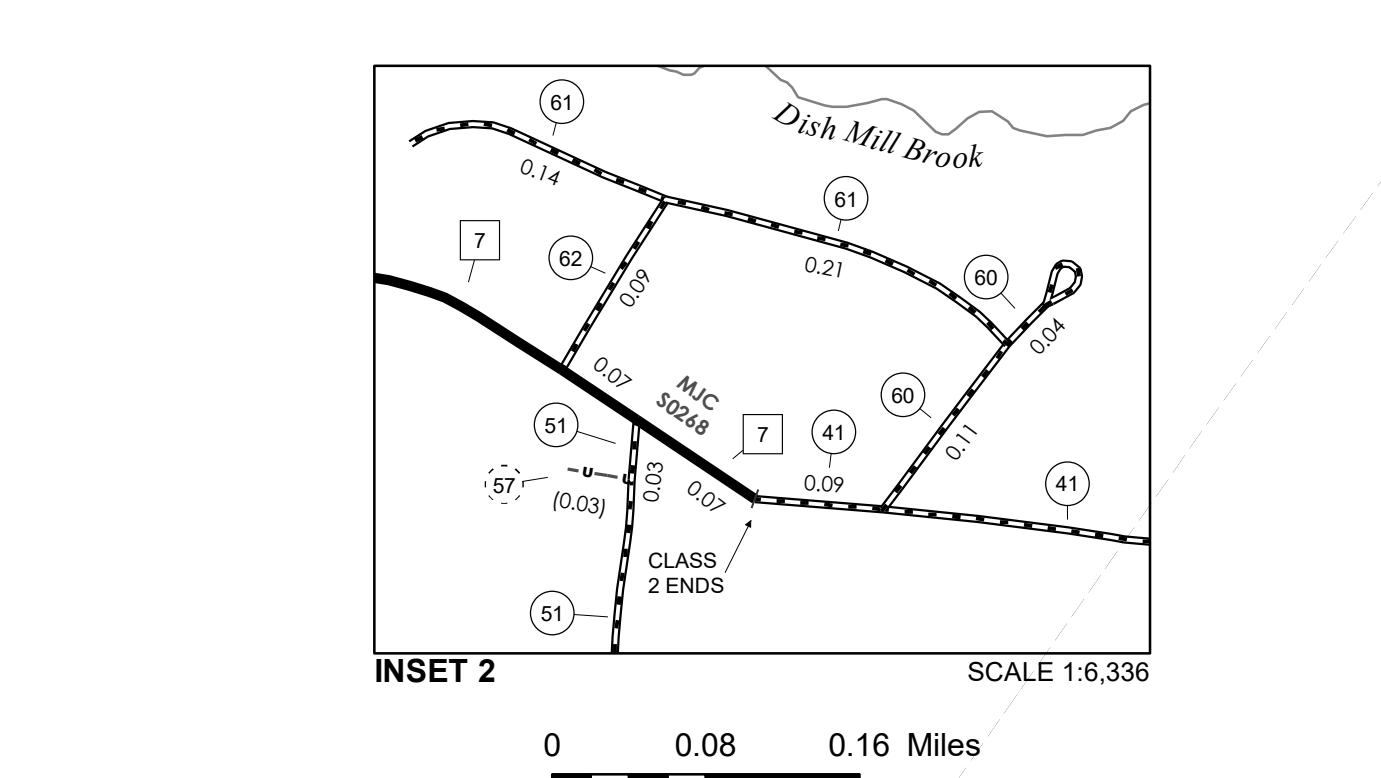
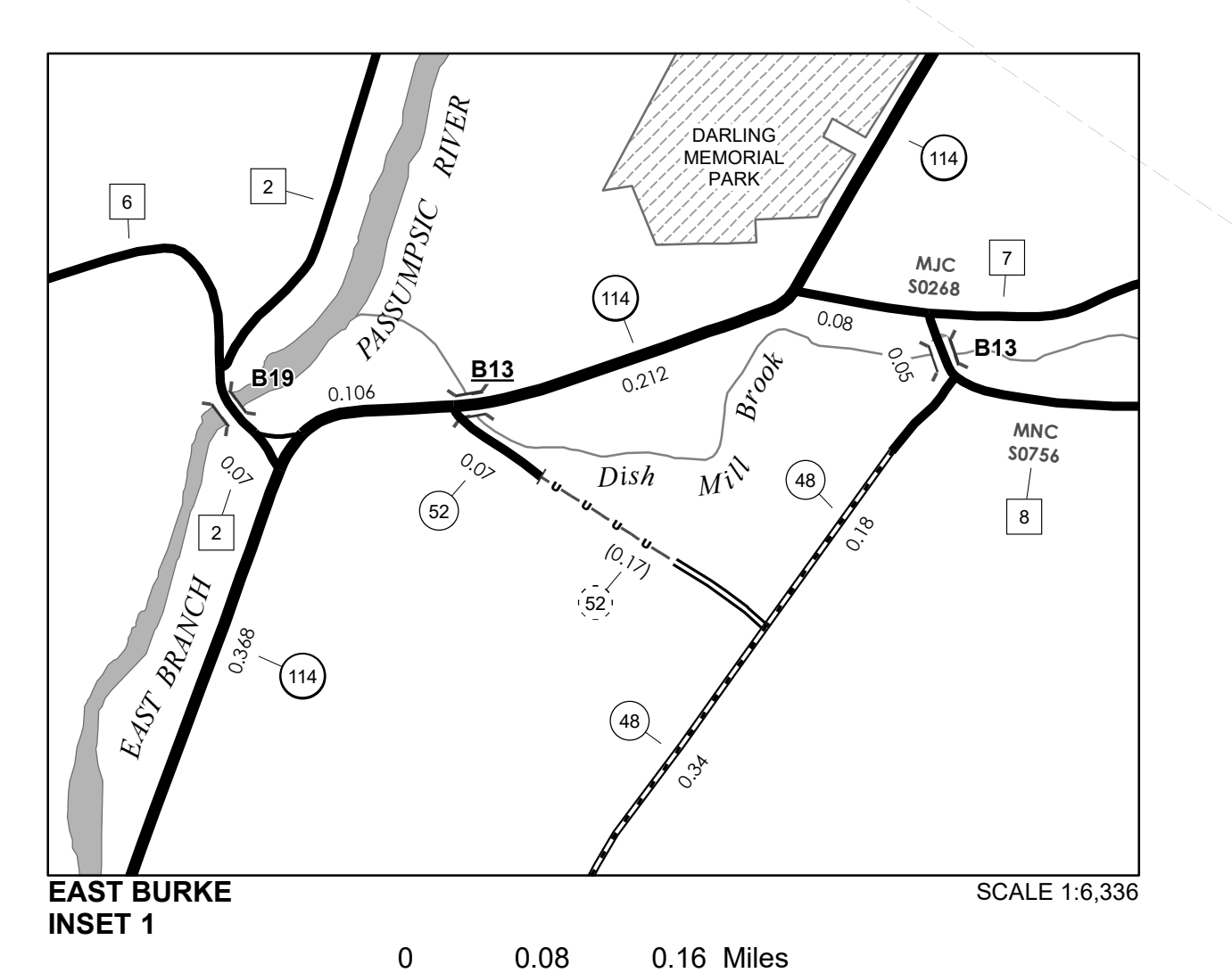
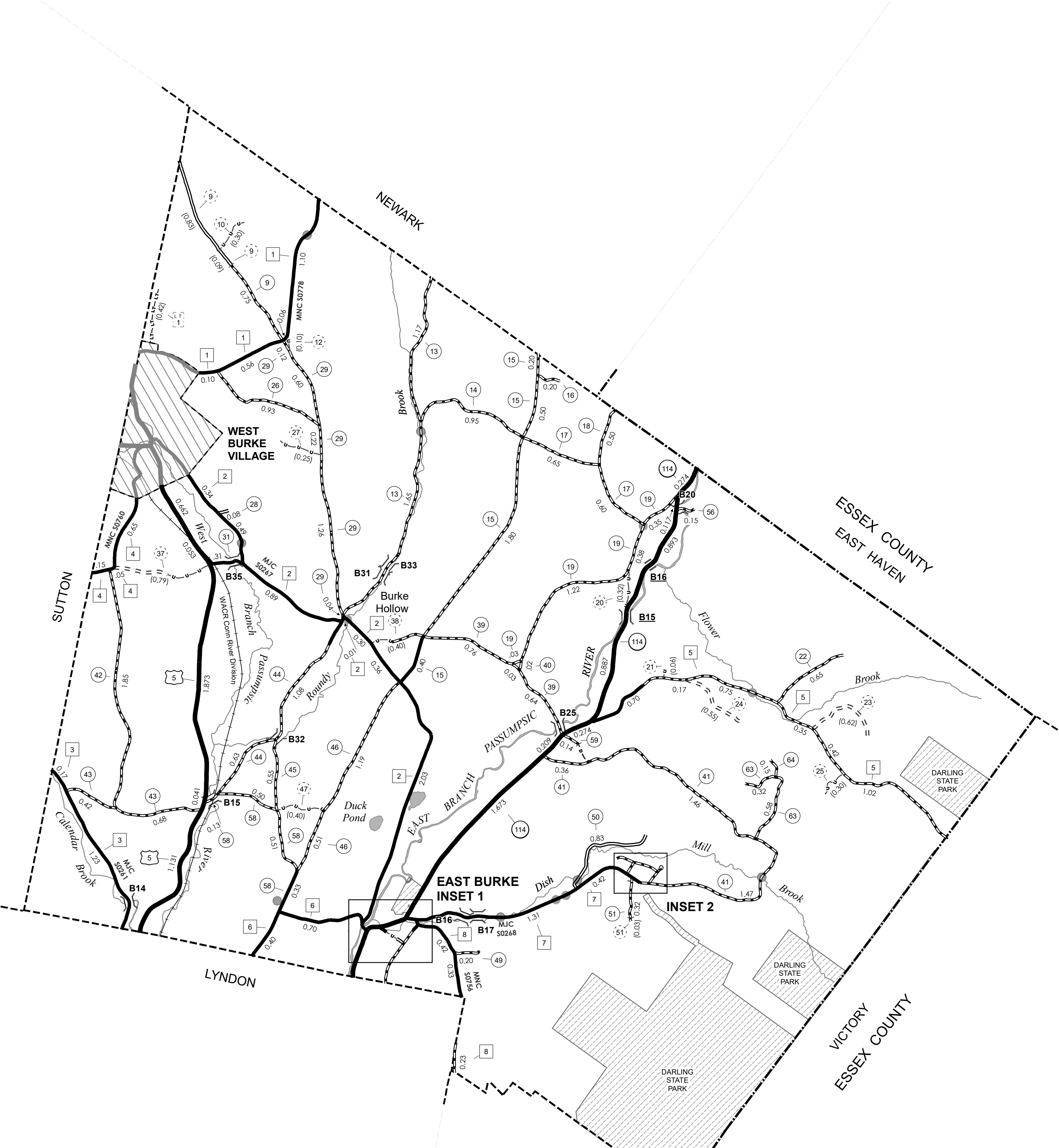
TRAIL No.	LENGTH IN MILES
1	(0.50)
TOTAL	0.50

- HIGHWAYS**
- INTERSTATE
 - STATE ROUTE
 - STATE ROUTE
 - CLASS 1
 - CLASS 2
 - CLASS 3
 - CLASS 4
 - LEGAL TRAIL
 - PARK AND RIDE
- POLITICAL SUBDIVISIONS**
- STATE BOUNDARY
 - COUNTY BOUNDARY
 - TOWN BOUNDARY
 - VILLAGE BOUNDARY
 - URBAN COMPACT BOUNDARY
 - WATER BODY
 - STREAM OR BROOK
- BRIDGE OR CULVERT**
- BRIDGE OR CULVERT > 20'
 - BRIDGE OR CULVERT 6' - 20'
 - BIKE PATH STRUCTURE
 - VT CULVERTS BRIDGE
 - VT CULVERTS CULVERT > 6'
 - B34 / C34 STATE BRIDGE OR CULVERT IDENTIFIER
 - B34 / C34 TOWN BRIDGE OR CULVERT IDENTIFIER
- FEDERAL CLASSIFICATION IDENTIFIER**
- MA MINOR ARTERIAL
 - MJC MAJOR COLLECTOR
 - MNC MINOR COLLECTOR
 - PA PRINCIPAL ARTERIAL
- OTHER**
- DISCONTINUED
 - HIGHWAY CLASS CHANGE
 - RAILROAD
 - INACTIVE RAILROAD
 - PUBLIC LAND - NATIONAL FOREST
 - PUBLIC LAND - STATE/MUNICIPAL
 - NFR NATIONAL FOREST ROAD
 - SFH STATE FOREST HIGHWAY

DISCLAIMER:
The untraveled highways (laid-out town highways), discontinued highways, and legal trails hereon are those of which the Agency of Transportation has record; others may exist.

Highway and bridge data by the Agency of Transportation. Town short structures drawn from the VT CULVERTS (formerly VOBCT) online database. All other data from the Vermont Open Geodata Portal. Only named streams shown.

Vermont State Plane Coordinate System
North American Datum of 1983
SPCS_Zone_Identifier: 4400
Geodetic Reference System 80
4,000-meter grid, Easting - Northing



VERMONT
GENERAL HIGHWAY MAP
Town of Burke
CALEDONIA COUNTY
Transportation District #7
Prepared by the
Vermont Agency of Transportation
Division of Policy, Planning and Intermodal Development
in cooperation with
U.S. Department of Transportation
Federal Highway Administration

