

| TOWN HWY. No. | LENGTH IN MILES CLASS 3 | LENGTH IN MILES CLASS 4 | TOWN HWY. No. | LENGTH IN MILES CLASS 3 | LENGTH IN MILES CLASS 4 |
|---------------|-------------------------|-------------------------|---------------|-------------------------|-------------------------|
| 9 | 0.75 | (0.92) | 37 | | (0.79) |
| 10 | | (0.30) | 38 | | (0.40) |
| 12 | | (0.10) | 39 | 1.43 | |
| 13 | 2.82 | | 40 | 0.02 | |
| 14 | 0.95 | | 41 | 3.38 | |
| 15 | 2.90 | | 42 | 1.85 | |
| 16 | 0.20 | | 43 | 1.10 | |
| 17 | 1.25 | | 44 | 1.71 | |
| 18 | 0.50 | | 45 | 0.55 | |
| 19 | 1.98 | | 46 | 1.70 | |
| 20 | | (0.32) | 47 | | (0.40) |
| 21 | | (0.06) | 48 | 0.52 | |
| 22 | 0.65 | | 49 | 0.20 | |
| 23 | | (0.62) | 50 | 0.83 | |
| 24 | | (0.55) | 51 | 0.35 | (0.03) |
| 25 | | (0.30) | 52 | 0.07 | (0.17) |
| 26 | 0.93 | | 53 | 0.05 | |
| 27 | | (0.25) | 54 | 0.03 | (0.12) |
| 28 | 0.08 | | 55 | 0.15 | |
| 29 | 2.24 | | 57 | | (0.03) |
| 30 | 0.07 | | 58 | 1.47 | |
| 31 | 0.31 | | 59 | 0.14 | |
| 32 | 0.43 | | 60 | 0.15 | |
| 33 | 0.10 | | 61 | 0.35 | |
| 34 | 0.20 | | 62 | 0.09 | |
| 35 | 0.13 | | 63 | 0.90 | |
| 36 | 0.16 | | 64 | 0.15 | |
| TOTAL | | | 33.84 | | 5.36 |

MILEAGE SUMMARY

| | | |
|----------------------------|---------------|--|
| CLASS 2 | | |
| TH-1 | 2,380 | |
| TH-2 | 4,950 | |
| TH-3 | 1,400 | |
| TH-4 | 1,240 | |
| TH-5 | 3,410 | |
| TH-6 | 1,100 | |
| TH-7 | 1,950 | |
| TH-8 | 1,030 | |
| TOTAL CLASS 2 | 17,460 | |
| CLASS 3 | | |
| TOTAL CLASS 3 | 33.84 | |
| TOTAL TOWN | 51,300 | |
| STATE HIGHWAY | | |
| VT-5A | 0.657 | |
| VT-114 | 5.013 | |
| TOTAL STATE HIGHWAY | 5.670 | |
| US HIGHWAY | | |
| US-5 | 4.320 | |
| TOTAL US HIGHWAY | 4.320 | |
| TOTAL STATE | 9,990 | |

TOTAL, TRAVELED HIGHWAYS, FEB. 10, 2013: 61,290
(Excludes Class 4, Legal Trail, and Unidentified Corridor Mileage)

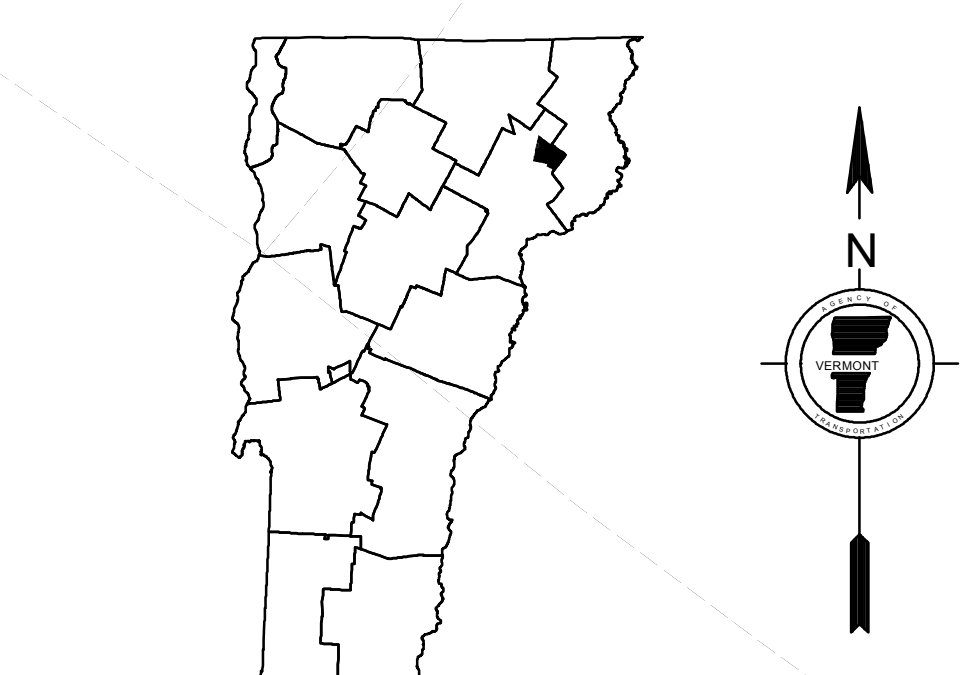
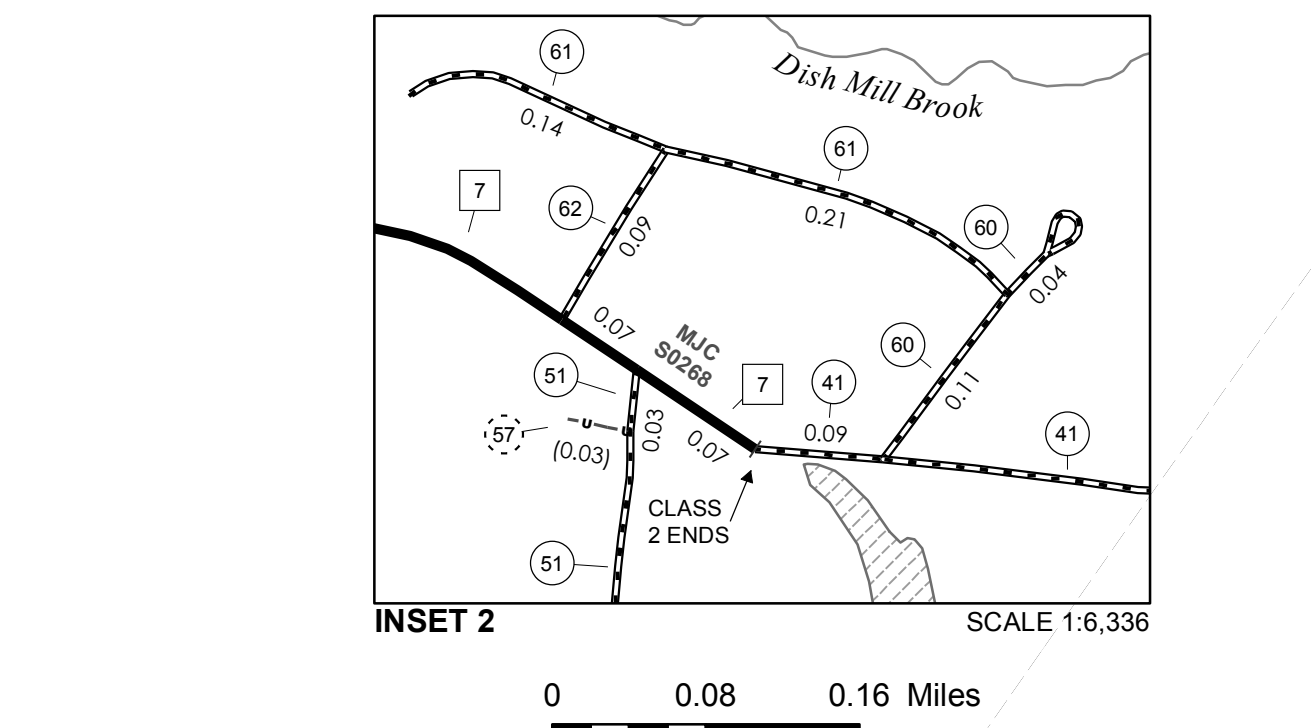
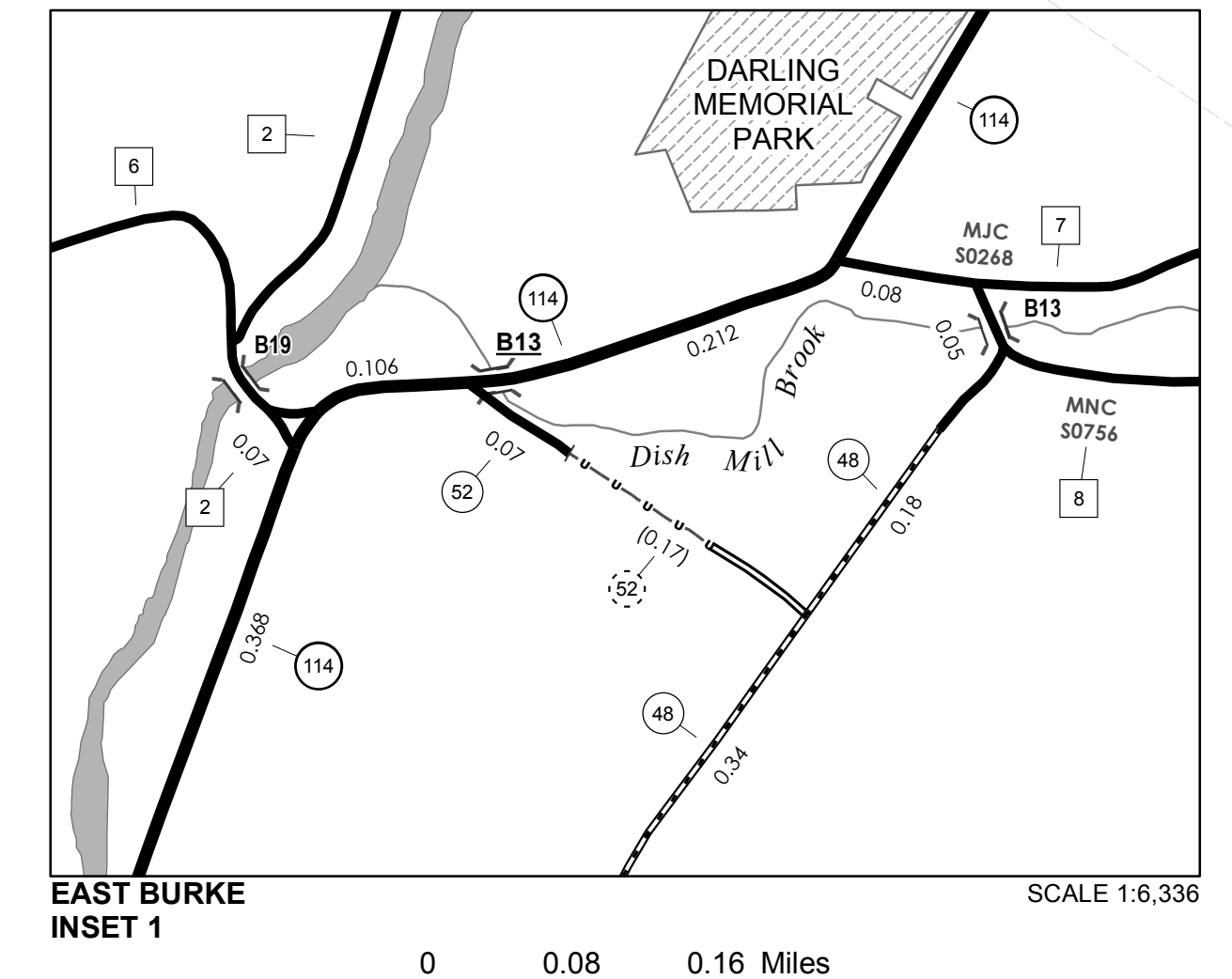
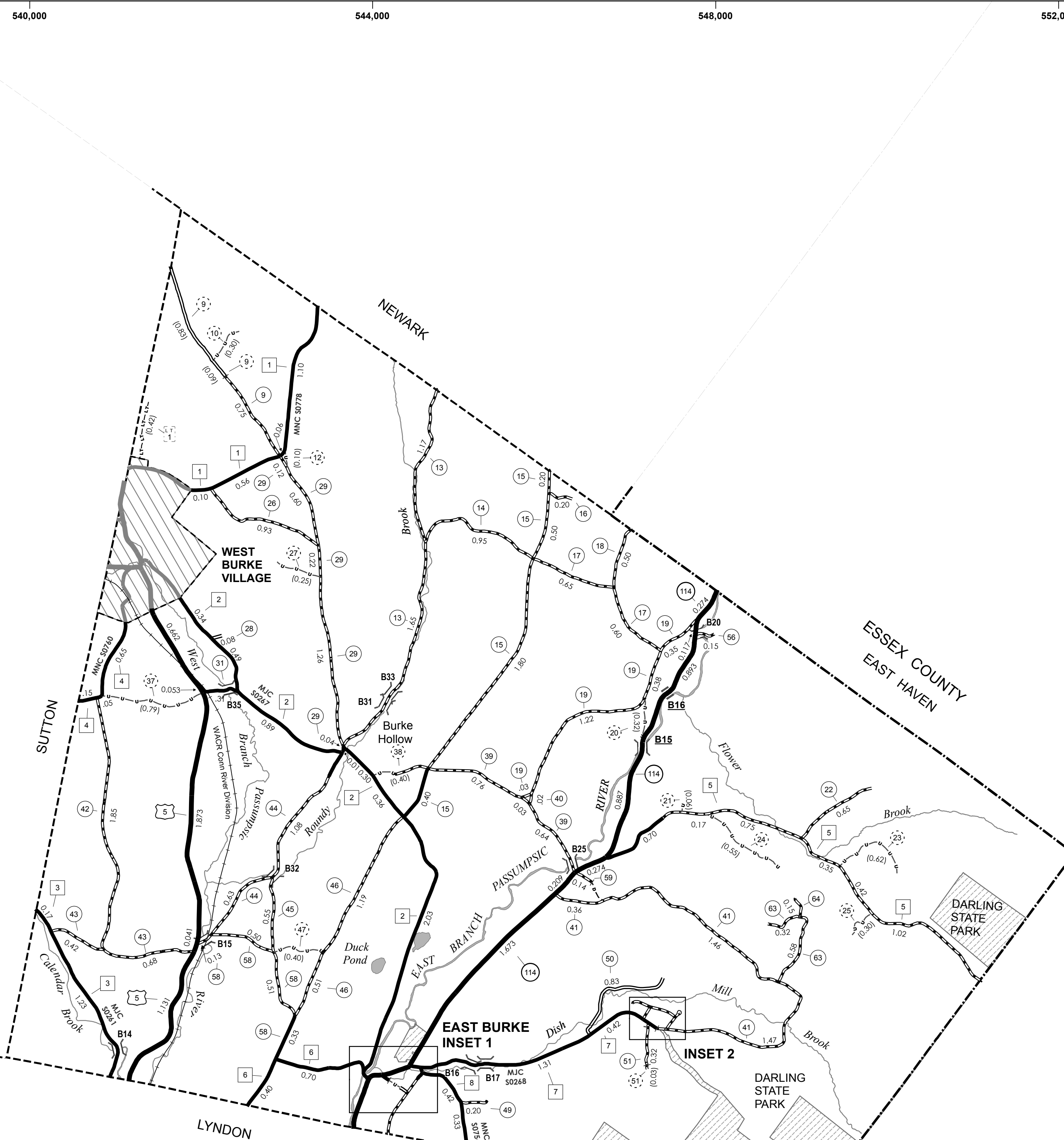
LEGAL TRAIL

| LEGAL TRAIL No. | LENGTH IN MILES LEGAL TRAIL |
|-----------------|-----------------------------|
| 1 | (0.50) |
| TOTAL | 0.50 |

- HIGHWAYS**
- INTERSTATE
 - U.S. ROUTE
 - STATE ROUTE
 - CLASS 1
 - CLASS 2
 - CLASS 3
 - CLASS 4
 - LEGAL TRAIL
- INTERSTATE OR DIVIDED HIGHWAY**
- STATE - HARD SURFACE OR PAVED**
- TOWN - HARD SURFACE OR PAVED**
- GRAVEL**
- SOIL OR GRADED AND DRAINED EARTH**
- UNIMPROVED OR PRIMITIVE**
- IMPASSABLE OR UNTRAVELED**
- LEGAL TRAIL**
- DISCONTINUED**
- HIGHWAY CLASS CHANGE**
- RAILROAD**
- INACTIVE RAILROAD**
- NFR NATIONAL FOREST ROAD**
- SFH STATE FOREST HIGHWAY**
- P PARK AND RIDE**
- PUBLIC LAND - GREEN MOUNTAIN NATIONAL FOREST**
- PUBLIC LAND - STATE/MUNICIPAL**
- POLITICAL SUBDIVISIONS**
- STATE BOUNDARY
 - COUNTY BOUNDARY
 - TOWN BOUNDARY
 - VILLAGE BOUNDARY
 - URBAN COMPACT BOUNDARY
 - WATER BODY
 - STREAM OR BROOK
- BRIDGE OR CULVERT**
- BRIDGE OR CULVERT GREATER THAN 20'
 - BRIDGE OR CULVERT 6' - 20'
- FEDERAL CLASSIFICATION IDENTIFIER**
- FAU URBAN ARTERIAL OR COLLECTOR
 - MA MINOR ARTERIAL
 - MJC MAJOR COLLECTOR
 - MNC MINOR COLLECTOR
 - PA PRINCIPAL ARTERIAL
- B34 / C34** STATE BRIDGE OR CULVERT IDENTIFIER
B34 / C34 TOWN BRIDGE OR CULVERT IDENTIFIER

DISCLAIMER:
The untraveled highways (laid-out town highways), discontinued highways, and legal trails hereon are those of which the Agency of Transportation has record; others may exist.
Highway and bridge data by the Agency of Transportation. All other data from the Vermont Center for Geographic Information. Only named streams are shown.

Vermont State Plane Coordinate System
North American Datum of 1983
SPCS_Zone_Identifier: 4400
Geodetic Reference System 80
4,000-meter grid, Easting - Northing



VERMONT GENERAL HIGHWAY MAP
Town of Burke
CALEDONIA COUNTY
Transportation District #7
Prepared by the Vermont Agency of Transportation
Division of Policy, Planning and Intermodal Development
in cooperation with
U.S. Department of Transportation
Federal Highway Administration
Mileage as of February 10, 2013
Map prepared October 03, 2013
SCALE 1:31,680

0.5 0 0.5 1 1.5 2 Miles
0.5 0 0.5 1 1.5 2 Kilometers