

TOWN HWY. No.	LENGTH IN MILES CLASS 3	LENGTH IN MILES CLASS 4	TOWN HWY. No.	LENGTH IN MILES CLASS 3	LENGTH IN MILES CLASS 4
2	1.15		41	1.09	
3	2.60		42	0.50	
5	0.23	(0.91)	43	0.27	
6	3.54		44	0.29	
8	0.14		45	0.15	
9		(0.06)	46	0.44	
10	0.34		47	0.28	
12	0.41		48	0.72	
13	0.80		49	0.22	
14	0.22		50	0.77	
15	2.10		51	0.32	
16	0.46	(0.60)	52	0.11	
17	0.10		53	0.12	
19		(0.09)	54	0.96	
20	0.78		55	0.48	
21		(0.09)	56	0.08	
22	0.19		57	0.30	
23	0.31		58	0.43	
24	0.33		60	0.34	
25		(0.19)	62	0.41	
26	0.11		63	0.21	
27	1.20		64	0.24	
28	0.06		65	0.22	
29	0.29		66	0.13	
30	0.15		67	0.30	
31	1.74		68	0.09	
32	0.72		69	0.07	
33	0.25		70	0.03	
34	0.25		71	0.05	
35	0.39		72	0.07	
36	0.63		74	0.26	
37	0.10		75	0.42	
38	0.10		76	0.21	
39	0.49		77	0.30	
40	0.34		78	0.47	
TOTAL			31.87	1.94	

TOWN HWY. No.	LENGTH IN MILES "NOT UP TO STANDARD"
5	(0.06)
TOTAL	0.06

* The sections of the town highways listed above are legally Class 3, but have been deemed "Not Up To Standard" and are functionally Class 4 Town Highways

LEGAL TRAIL No.	LENGTH IN MILES LEGAL TRAIL
1	(0.49)
2	(1.40)
TOTAL	1.89

MILEAGE SUMMARY		
CLASS 2		
TH-1	3.563	
TH-2	6.480	
TH-3	0.110	
TH-4	1.370	
TOTAL CLASS 2	11.523	
CLASS 3		
TOTAL CLASS 3	31.87	
TOTAL TOWN	43.393	
STATE HIGHWAY		
VT-11	4.135	
VT-30	7.659	
NSH-WSH	0.402	
TOTAL STATE HIGHWAY	12.196	
STATE HIGHWAY - Ramps		
VT-30	0.093	
TOTAL STATE HIGHWAY - Ramps	0.093	
TOTAL STATE	12.289	
TOTAL, TRAVELED HIGHWAYS, FEB. 10, 2018:	55.682	
<small>(Excludes Class 4 and Legal Trail Mileage)</small>		

- HIGHWAYS**
- INTERSTATE
- U.S. ROUTE
- STATE ROUTE
- CLASS 1
- CLASS 2
- CLASS 3
- CLASS 4
- LEGAL TRAIL
- PARK AND RIDE
- INTERSTATE OR DIVIDED HIGHWAY
- STATE - HARD SURFACE OR PAVED
- TOWN - HARD SURFACE OR PAVED
- GRAVEL
- SOIL OR GRADED AND DRAINED EARTH
- UNIMPROVED OR PRIMITIVE
- IMPASSABLE OR UNTRAVELED
- LEGAL TRAIL
- DISCONTINUED
- HIGHWAY CLASS CHANGE
- RAILROAD
- INACTIVE RAILROAD
- PUBLIC LAND - NATIONAL FOREST
- PUBLIC LAND - STATE/MUNICIPAL
- NFR NATIONAL FOREST ROAD
- SFH STATE FOREST HIGHWAY

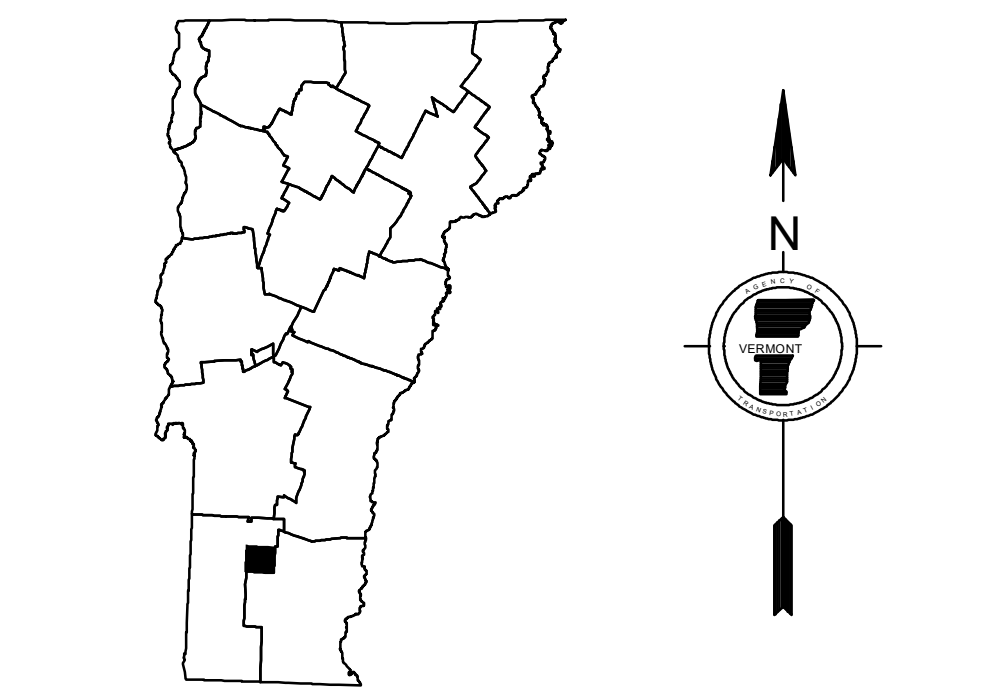
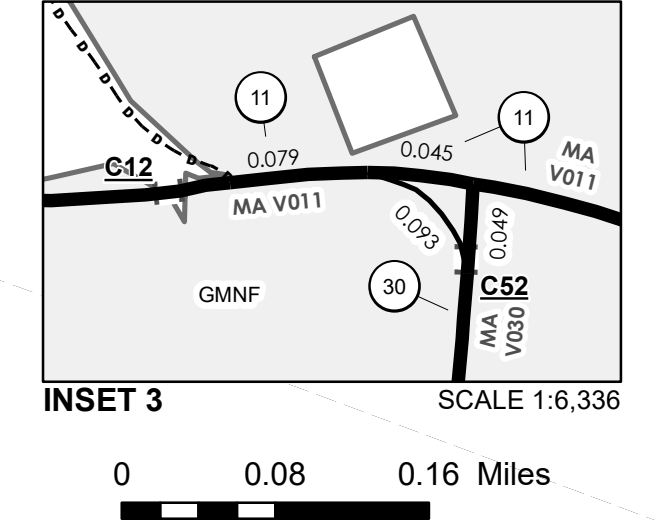
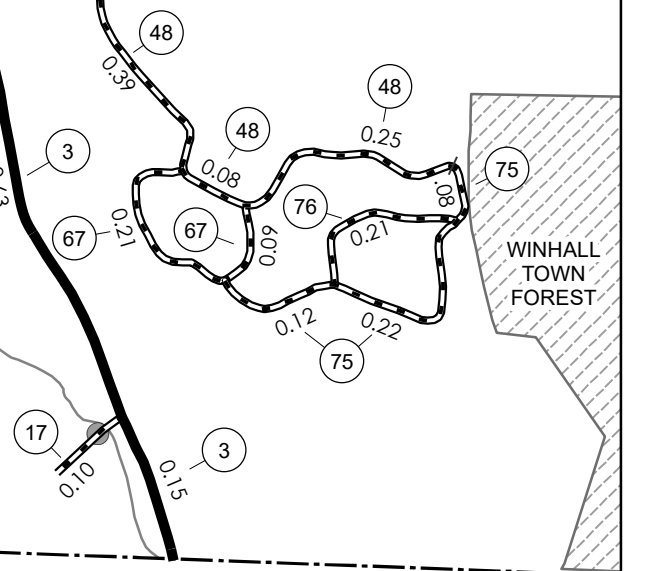
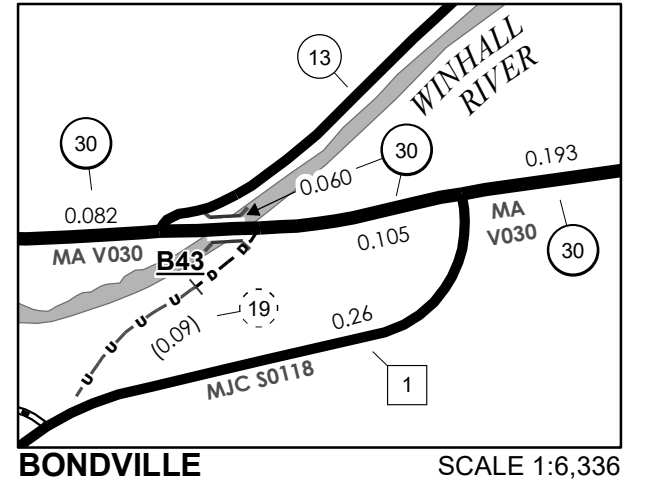
- POLITICAL SUBDIVISIONS**
- STATE BOUNDARY
- COUNTY BOUNDARY
- TOWN BOUNDARY
- VILLAGE BOUNDARY
- URBAN COMPACT BOUNDARY
- WATER BODY
- STREAM OR BROOK
- BRIDGE OR CULVERT**
- BRIDGE OR CULVERT > 20'
- BRIDGE OR CULVERT 6' - 20'
- BIKE PATH STRUCTURE
- VT CULVERTS BRIDGE
- VT CULVERTS CULVERT > 6'
- B34 / C34 STATE BRIDGE OR CULVERT IDENTIFIER
- B34 / C34 TOWN BRIDGE OR CULVERT IDENTIFIER

FEDERAL CLASSIFICATION IDENTIFIER
 MA MINOR ARTERIAL
 MJC MAJOR COLLECTOR
 MNC MINOR COLLECTOR
 PA PRINCIPAL ARTERIAL

DISCLAIMER:
 The untraveled highways (laid-out town highways), discontinued highways, and legal trails hereon are those of which the Agency of Transportation has record; others may exist.

Highway and bridge data by the Agency of Transportation. Town short structures drawn from the VT CULVERTS (formerly VOBCIT) online database. All other data from the Vermont Center for Geographic Information. Only named streams shown.

Vermont State Plane Coordinate System
 North American Datum of 1983
 SPCS_Zone_Identifier: 4400
 Geodetic Reference System 80
 4,000-meter grid, Easting - Northing



VERMONT GENERAL HIGHWAY MAP
Town of Winhall
 BENNINGTON COUNTY
 Transportation District #1

Prepared by the
 Vermont Agency of Transportation
 Division of Policy, Planning and Intermodal Development
 in cooperation with
 U.S. Department of Transportation
 Federal Highway Administration

Mileage as of February 10, 2018
 Map prepared July 26, 2018
 SCALE 1:25,344