

TOWN	LENGTH IN MILES	LEGAL TRAIL NO.	LENGTH IN MILES
HWY. CLASS 3	CLASS 4	1	(0.49)
2	1.15		
3	2.60		
5	0.23 (0.91)		
6	3.54 (0.06)		
7	0.21 (1.16)		
8	0.14 (0.03)		
9			
10	0.34 (0.06)		
12	0.41		
13	0.80		
14	0.22		
15	2.10		
16	0.46 (0.60)		
17	0.10		
19			
20	0.78 (0.09)		
21			
22	0.19 (0.09)		
23	0.31		
24	0.33		
25			
26	0.11 (0.19)		
27	1.20		
28	0.06		
29	0.29		
30	0.15		
31	1.74		
32	0.72		
33	0.25		
34	0.25		
35	0.39		
36	0.63		
37	0.10		
38	0.10		
39	0.49		
TOTAL	32.08	3.19	

* This portion of town highway is Class 3, but is functionally Class 4

MILEAGE SUMMARY	
CLASS 2	
TH-1	3.563
TH-2	6.480
TH-3	0.110
TH-4	1.370
TOTAL CLASS 2	11.523
CLASS 3	
TOTAL CLASS 3	32.080
TOTAL TOWN	43.603
STATE HIGHWAY	
VT-11	4.135
VT-30	7.752
WINHALL STATE HWY	0.402
TOTAL STATE HIGHWAY	12.289
TOTAL STATE	12.289

TOTAL, TRAVELED HIGHWAYS, FEB. 10, 2011: 55.892
(Excludes Class 4, Legal Trail, and Unidentified Corridor Mileage)

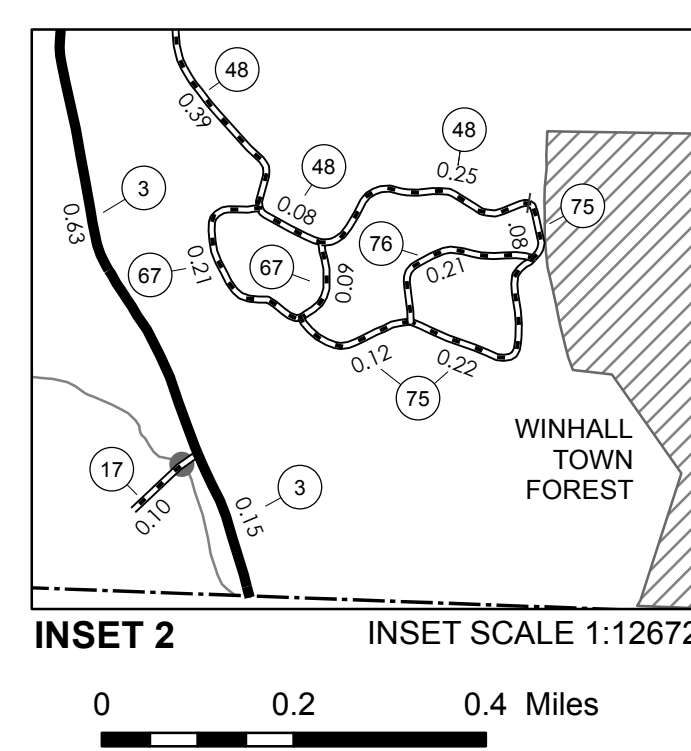
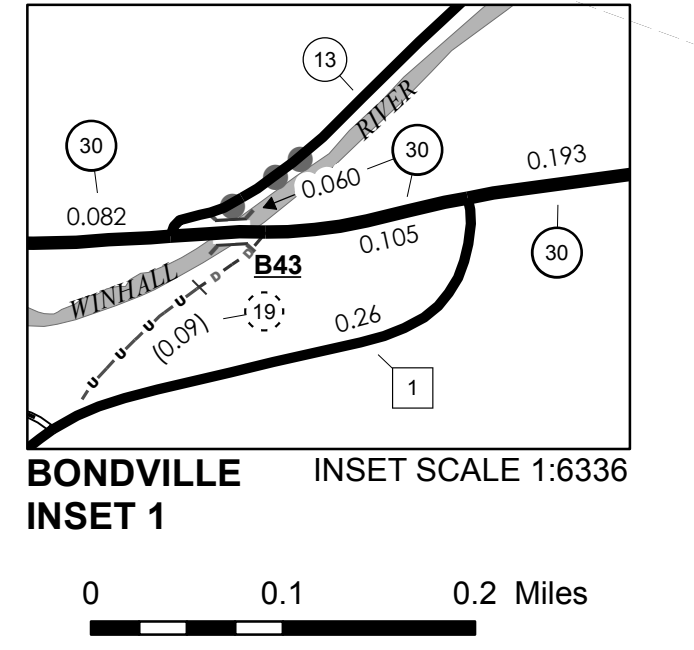
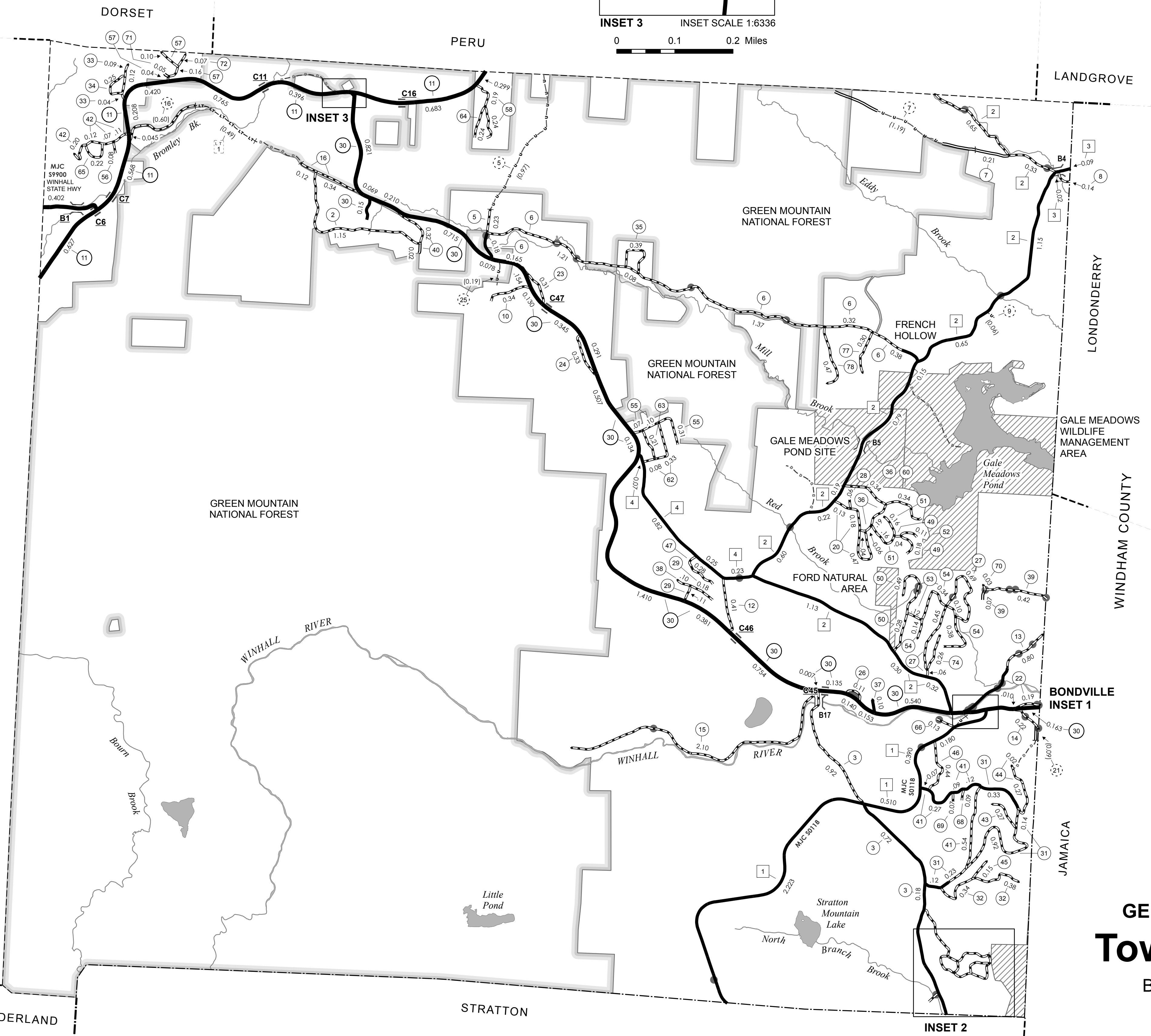
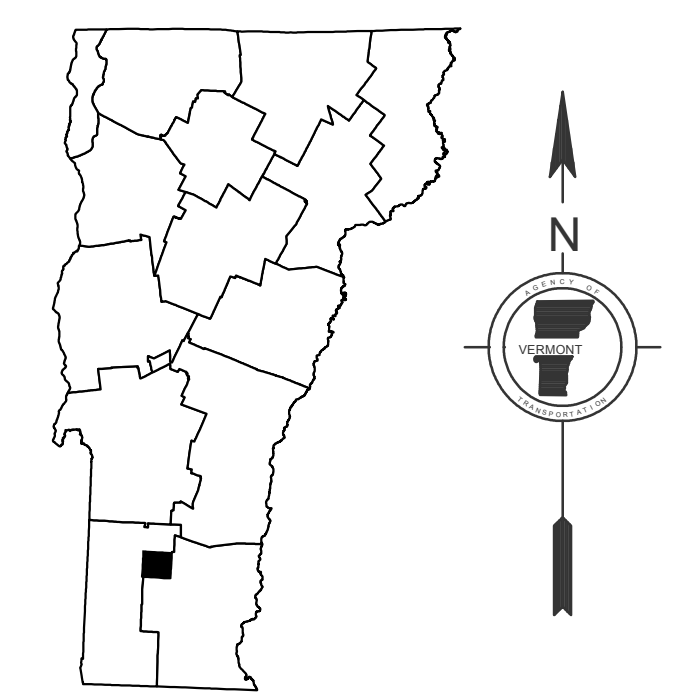
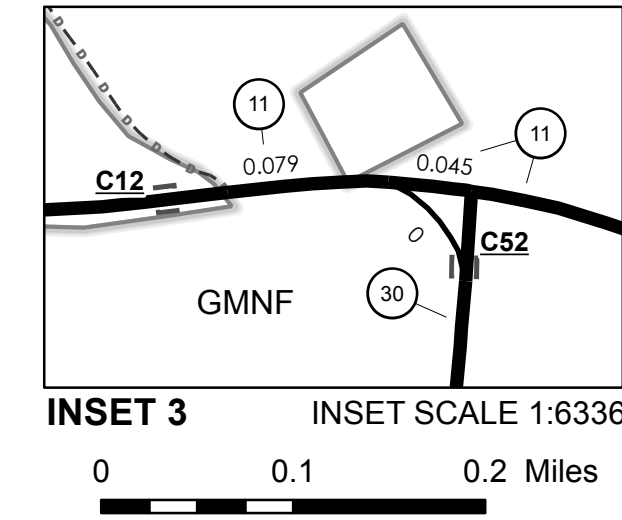
- HIGHWAYS**
- INTERSTATE
 - U.S. ROUTE
 - STATE ROUTE
 - CLASS 1
 - CLASS 2
 - CLASS 3
 - CLASS 4
 - LEGAL TRAIL
 - INTERSTATE OR DIVIDED HIGHWAY
 - STATE - HARD SURFACE OR PAVED
 - TOWN - HARD SURFACE OR PAVED
 - GRAVEL
 - SOIL OR GRADED AND DRAINED EARTH
 - UNIMPROVED OR PRIMITIVE
 - IMPASSABLE OR UNTRAVELED
 - LEGAL TRAIL
 - DISCONTINUED
 - HIGHWAY CLASS CHANGE
 - RAILROAD
 - INACTIVE RAILROAD

- PUBLIC LAND - STATE / MUNICIPAL
- PUBLIC LAND - GREEN MOUNTAIN NATIONAL FOREST
- POLITICAL SUBDIVISIONS**
- STATE BOUNDARY
- COUNTY BOUNDARY
- TOWN BOUNDARY
- VILLAGE BOUNDARY
- URBAN COMPACT BOUNDARY
- WATER BODY
- STREAM OR BROOK
- BRIDGE OR CULVERT**
- BRIDGE OR CULVERT GREATER THAN 20'
- BRIDGE OR CULVERT 6' - 20'
- TOWN SHORT STRUCTURE
- B34 / C34 STATE BRIDGE OR CULVERT IDENTIFIER**
- B34 / C34 TOWN BRIDGE OR CULVERT IDENTIFIER**
- FEDERAL CLASSIFICATION IDENTIFIER**
- FAU URBAN ARTERIAL OR COLLECTOR
- MA MINOR ARTERIAL
- MJC MAJOR COLLECTOR
- MNC MINOR COLLECTOR
- PA PRINCIPAL ARTERIAL

STRUCTURES - SURFACE WATER NOTE:
STRUCTURES: Town short structures (bridges or culverts from 6-feet to less than 20-feet) are drawn from the Vermont Online Bridge & Culvert Inventory Tool (VOBCIT) database.
NOTE: Town shorts are not consistently tagged within VOBCIT.
SURFACE WATERS: The surface waters are from the Vermont Hydrological Dataset (VHD). Only the named streams are shown.

DISCLAIMER:
The untraveled highways (laid-out town highways), discontinued highways, and legal trails shown hereon are those of which the Agency of Transportation has record; others may exist.
Highway and bridge data by the Agency of Transportation. All other data from the Vermont Center for Geographic Information.

Vermont State Plane Coordinate System
North American Datum of 1983
SPCS Zone Identifier: 4400
Geodetic Reference System 80
4,000-meter grid, Easting - Northing



VERMONT GENERAL HIGHWAY MAP
Town of Winhall
BENNINGTON COUNTY
Transportation District #1
Prepared by the Vermont Agency of Transportation
Division of Policy, Planning & Intermodal Development
in cooperation with
U.S. Department of Transportation
Federal Highway Administration
Mileage as of February 10, 2011
Map prepared October 26, 2011
SCALE 1:25,344
0.4 0 0.4 0.8 1.2 1.6 Miles
1 0 1 2 Kilometers