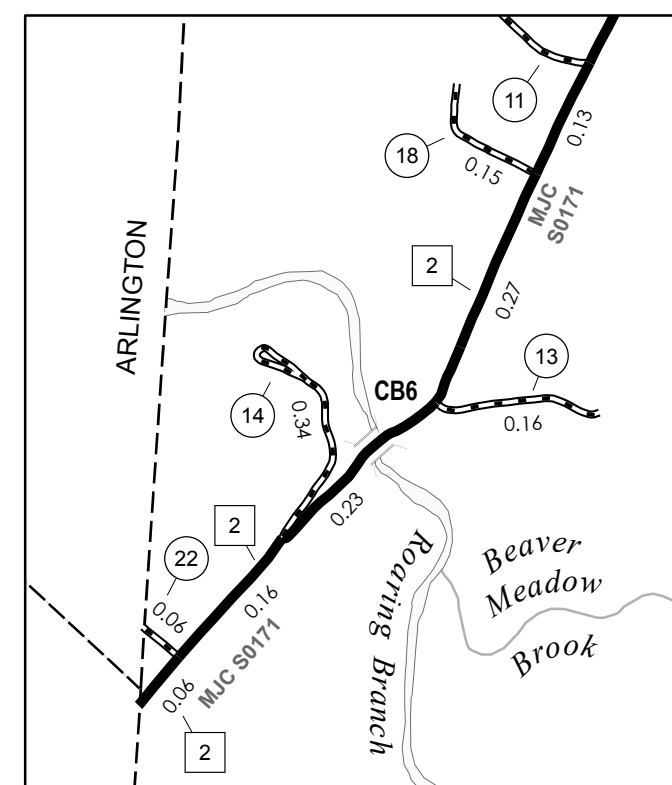
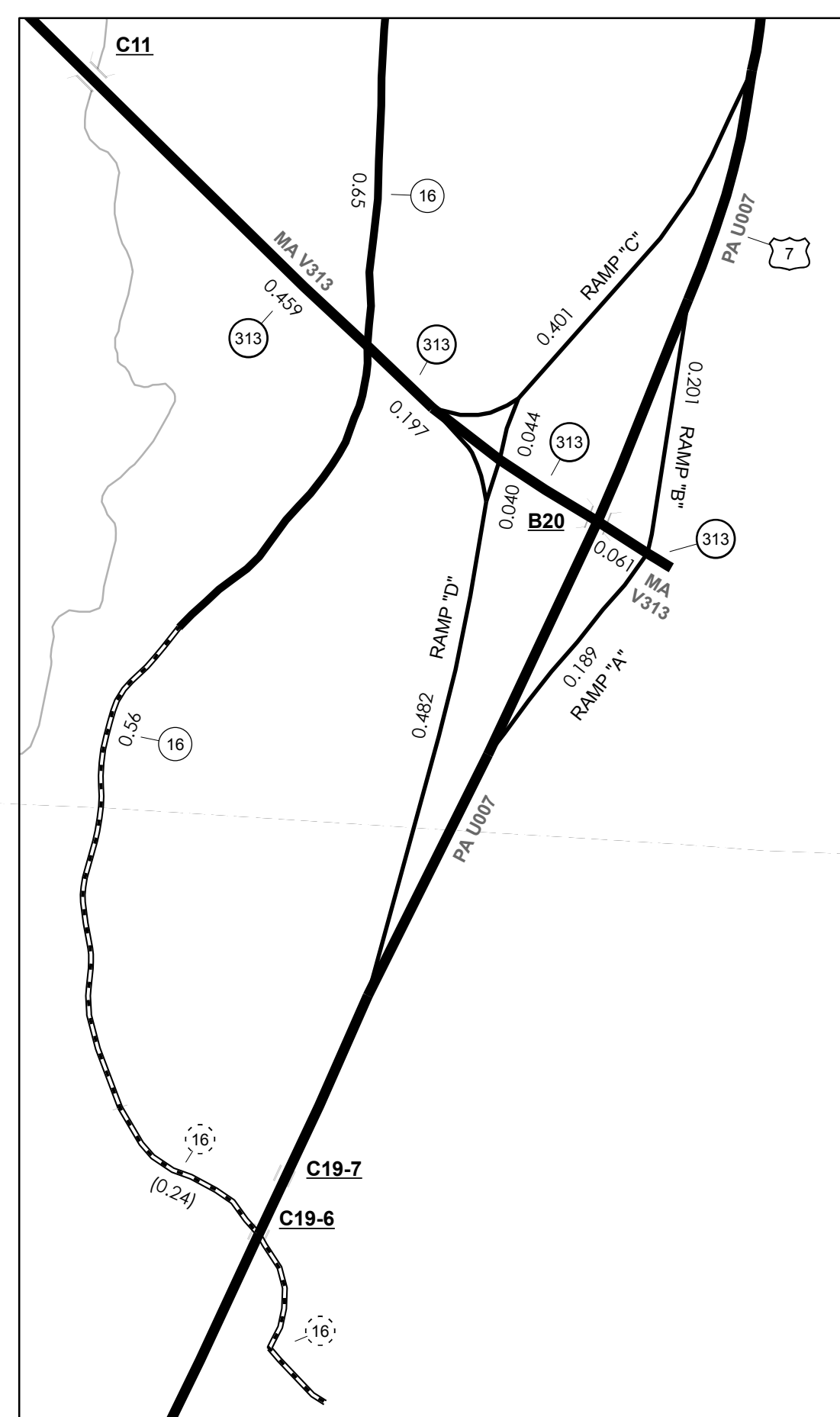


SUNDERLAND INSET 1 INSET SCALE 1:12672

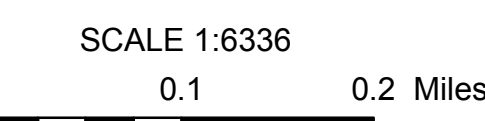
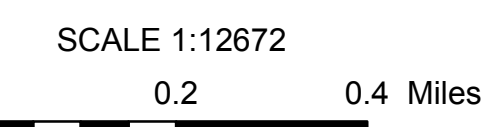


CHISELVILLE INSET 2 INSET SCALE 1:12672



INSET 3 INSET SCALE 1:6336

INSET SCALES



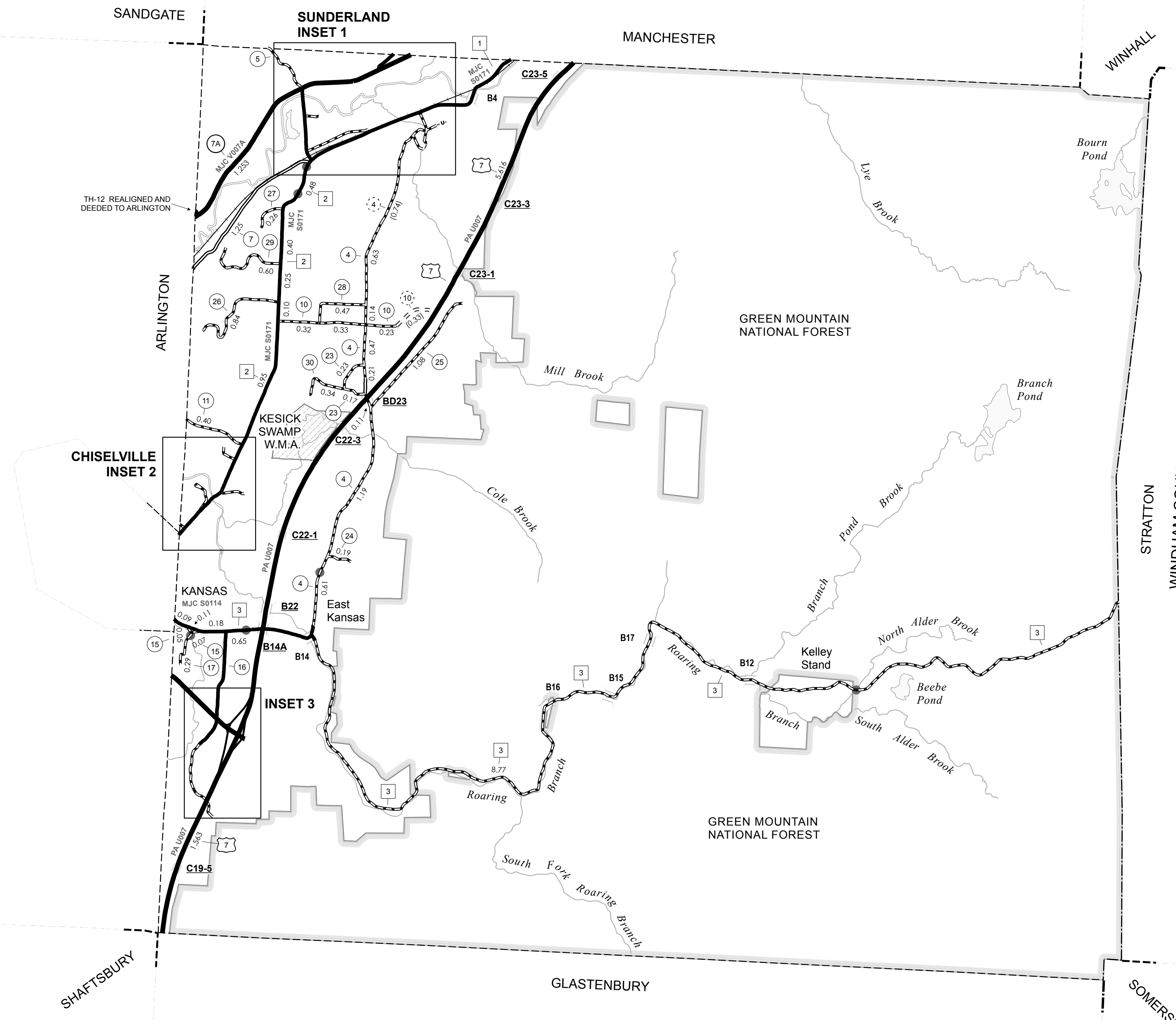
TOWN HWY. NO.	CLASS 3	LENGTH IN MILES	CLASS 4	LENGTH IN MILES
4	3.50	(0.85)	18	0.15
5	0.58		19	0.20
6	0.50		20	(0.13)
7	1.25		21	0.10
8	0.09	(0.07)	22	0.06
9	0.10	(0.06)	23	0.40
10	0.88		24	0.19
11	0.40	(0.33)	25	1.08
13	0.16		26	0.84
14	0.34		27	0.26
15	0.12		28	0.47
16	1.21	(0.24)	29	0.60
17	0.29		30	0.34
TOTAL			14.11	1.68

* This portion of town highway is Class 3, but is functionally Class 4

MILEAGE SUMMARY

CLASS 2			
TH-1	1.750		
TH-2	3.620		
TH-3	9.800		
	TOTAL CLASS 2	15.170	
CLASS 3			
	TOTAL CLASS 3	14.110	
	TOTAL TOWN	29.280	
STATE HIGHWAY			
VT-7A	2.116		
VT-313	0.717		
	TOTAL STATE HIGHWAY	2.833	
US HIGHWAY			
US-7	7.179		
	TOTAL US HIGHWAY	7.179	
US HIGHWAY - Ramp			
US-7	1.357		
	TOTAL US HIGHWAY - Ramp	1.357	
	TOTAL STATE	11.369	

TOTAL, TRAVELED HIGHWAYS, FEB. 10, 2010: 40.649
(Excludes Class 4 and Legal Trail Mileage)



- HIGHWAYS**
 - INTERSTATE
 - U.S. ROUTE
 - STATE ROUTE
 - CLASS 1
 - CLASS 2
 - CLASS 3
 - CLASS 4
 - LEGAL TRAIL
- INTERSTATE OR DIVIDED HIGHWAY
- STATE - HARD SURFACE OR PAVED
- TOWN - HARD SURFACE OR PAVED
- GRAVEL
- SOIL OR GRADED AND DRAINED EARTH
- UNIMPROVED OR PRIMITIVE
- IMPASSABLE OR UNTRAVELED
- LEGAL TRAIL
- DISCONTINUED
- HIGHWAY CLASS CHANGE
- RAILROAD

- FEDERAL CLASSIFICATION IDENTIFIER**
 - FAU URBAN ARTERIAL OR COLLECTOR
 - MA MINOR ARTERIAL
 - MJC MAJOR COLLECTOR
 - MNC MINOR COLLECTOR
 - PA PRINCIPAL ARTERIAL

- PUBLIC LAND - STATE / MUNICIPAL
- PUBLIC LAND - NATIONAL FOREST
- POLITICAL SUBDIVISIONS**
 - STATE BOUNDARY
 - COUNTY BOUNDARY
 - TOWN BOUNDARY
 - VILLAGE BOUNDARY
 - URBAN COMPACT BOUNDARY
 - WATER BODIES
 - STREAM OR BROOK
- BRIDGE OR CULVERT**
 - BRIDGE OR CULVERT GREATER THAN 20'
 - BRIDGE OR CULVERT 6' - 20'
 - TOWN SHORT STRUCTURE
- B34 / C34 STATE BRIDGE OR CULVERT IDENTIFIER**
- B34 / C34 TOWN BRIDGE OR CULVERT IDENTIFIER**
- W.M.A. = WILDLIFE MANAGEMENT AREA

STRUCTURES - SURFACE WATER NOTE:
STRUCTURES: Town short structures (bridges or culverts from 6-feet to less than 20-feet) are drawn from the Vermont Online Bridge & Culvert Inventory Tool (VOBCIT) database.
NOTE: Town shorts are not consistently tagged within VOBCIT.
SURFACE WATERS: The surface waters are from the Vermont Hydrological Dataset (VHD). Only the named streams are shown.

DISCLAIMER:
The untraveled highways (laid-out town highways), discontinued highways, and legal trails shown hereon are those of which the Agency of Transportation has record; others may exist.
Highway and bridge data by the Agency of Transportation. All other data from the Vermont Center for Geographic Information.

Vermont State Plane Coordinate System
North American Datum of 1983
SPCS_Zone_Identifier: 4400
Geodetic Reference System 80
4,000-meter grid, Easting - Northing

VERMONT
GENERAL HIGHWAY MAP
Town of Sunderland
BENNINGTON COUNTY

Transportation District #1
Prepared by the
Vermont Agency of Transportation
Division of Planning, Outreach
and Community Affairs
in cooperation with
U.S. Department of Transportation
Federal Highway Administration

