

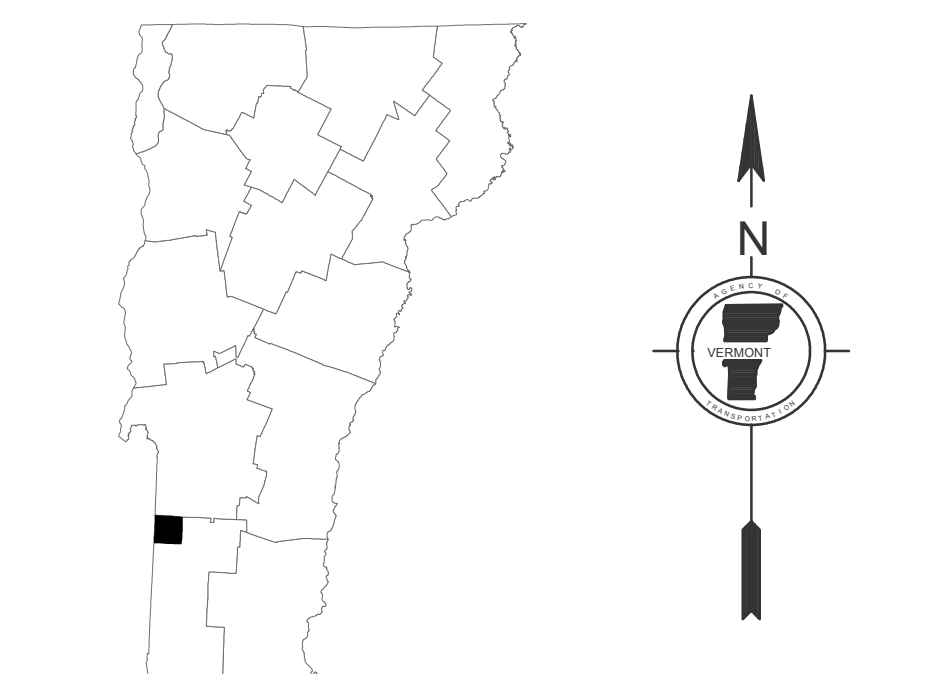
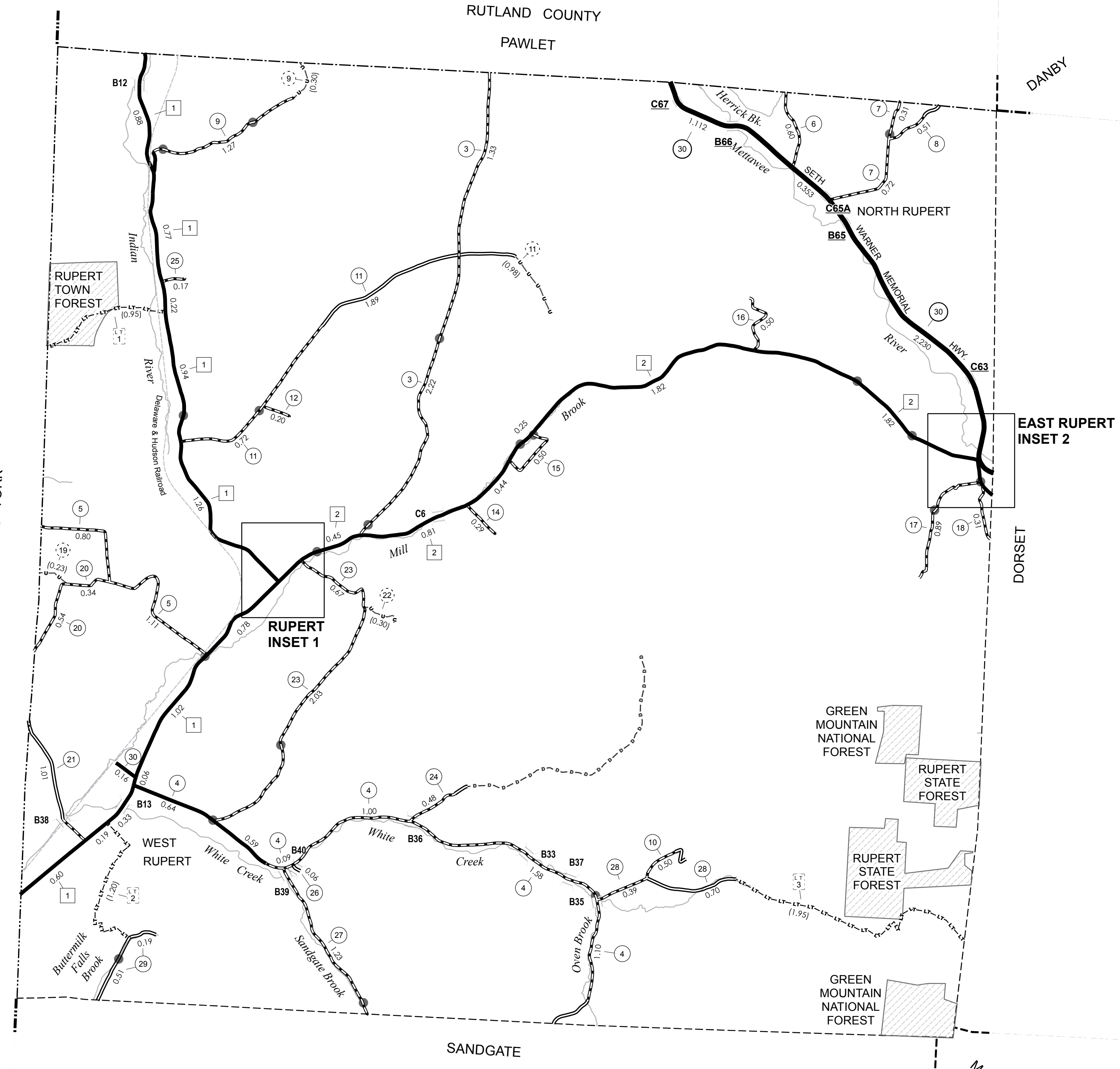
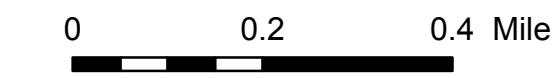
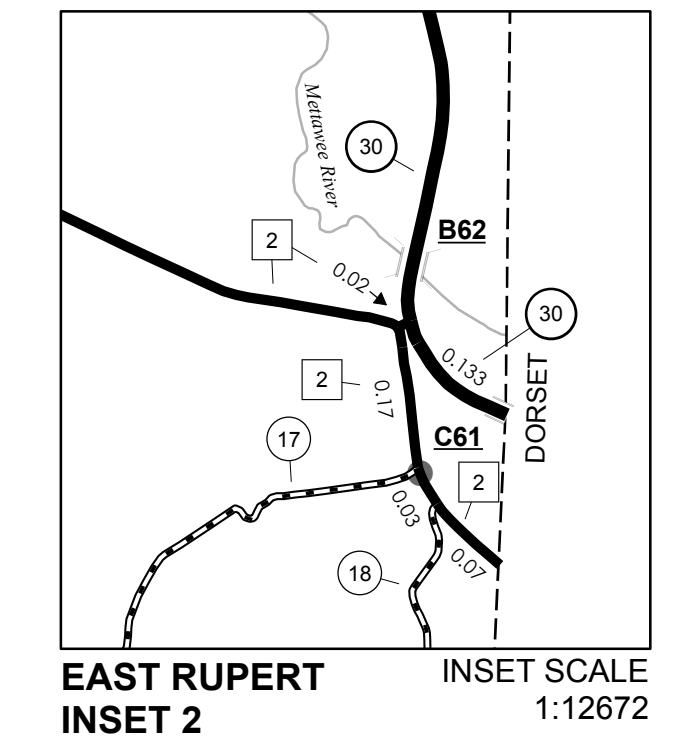
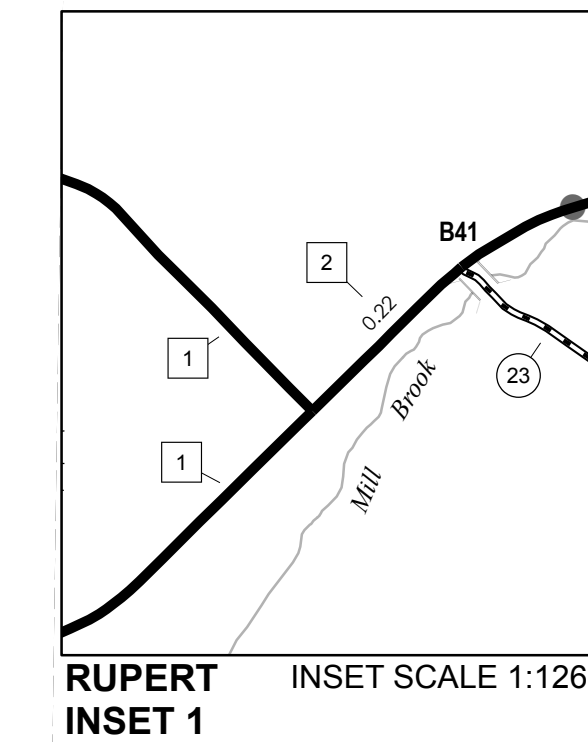
TOWN HWY. NO.	LENGTH IN MILES CLASS 3	LENGTH IN MILES CLASS 4
3	3.55	
4	5.00	
5	1.91	
6	0.60	
7	1.03	
8	0.51	
9	1.27	(0.30)
10	0.50	
11	2.61	(0.98)
12	0.20	
14	0.29	
15	0.50	
16	0.50	
17	0.89	
18	0.31	
19		(0.23)
20	0.88	
21	1.01	
22		(0.30)
23	2.70	
24	0.48	
25	0.17	
26	0.06	
27	1.23	
28	1.09	
29	0.70	
30	0.16	
TOTAL	28.15	1.81

LEGAL TRAIL NO.	LENGTH IN MILES
1	(0.95)
2	(1.20)
3	(1.95)
TOTAL	4.10

MILEAGE SUMMARY

CLASS 2		
TH-1	7.050	
TH-2	6.100	
TOTAL CLASS 2	13.150	
CLASS 3		
TOTAL CLASS 3	28.150	
TOTAL TOWN	41.300	
STATE HIGHWAY		
VT-30	3.828	
TOTAL STATE HIGHWAY	3.828	
TOTAL STATE	3.828	

TOTAL TRAVELED HIGHWAYS, FEB. 10, 2010: 45.128
(Excludes Class 4 and Legal Trail Mileage)

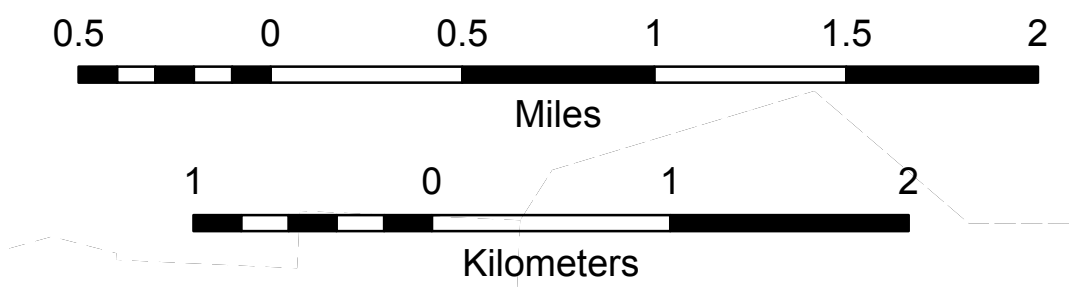


VERMONT
GENERAL HIGHWAY MAP
Town of Rupert
BENNINGTON COUNTY

Transportation District #1
Prepared by the
Vermont Agency of Transportation
Division of Planning, Outreach
and Community Affairs
in cooperation with
U.S. Department of Transportation
Federal Highway Administration

Mileage as of February 10, 2010
Map prepared June 14, 2010

SCALE 1:31,680



STRUCTURES - SURFACE WATER NOTE:
STRUCTURES:
Town short structures (bridges or culverts from 4-feet to less than 20-feet) are drawn from the Vermont Online Bridge & Culvert Inventory Tool (VOBCIT) database.
NOTE: Town shorts are not consistently tagged within VOBCIT.
The surface waters are from the Vermont Hydrological Dataset (VHD). Only the named streams are shown.

DISCLAIMER:
The untraveled highways (laid-out town highways), discontinued highways, and legal trails shown hereon are those of which the Agency of Transportation has record; others may exist.
Highway and bridge data by the Agency of Transportation. All other data from the Vermont Center for Geographic Information.

Vermont State Plane Coordinate System
North American Datum of 1983
SPCS Zone Identifier: 4400
Geodetic Reference System 80
4,000-meter grid, Easting - Northing