

440,000 444,000 448,000 452,000 456,000 460,000 464,000

**MILEAGE SUMMARY**

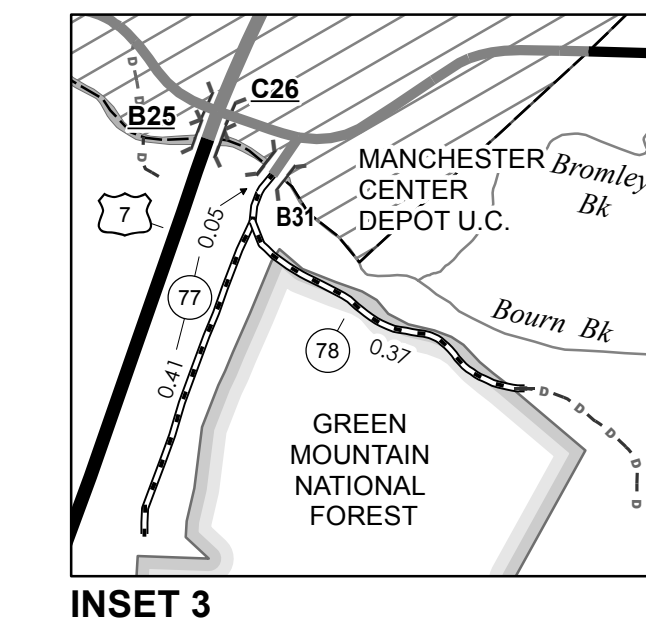
CLASS	LENGTH IN MILES	TOTAL CLASS	LENGTH IN MILES
CLASS 1			
TH-1	3.019		
TH-2	0.305		
TH-3	1.259		
<b>TOTAL CLASS 1</b>	<b>4.583</b>		
CLASS 2			
TH-3	2.170		
TH-4	1.980		
TH-5	0.400		
TH-6	3.870		
TH-7	1.750		
TH-8	2.100		
TH-9	0.070		
TH-10	1.520		
TH-11	1.790		
<b>TOTAL CLASS 2</b>	<b>15.650</b>		
CLASS 3			
<b>TOTAL CLASS 3</b>	<b>23.550</b>		
<b>TOTAL TOWN</b>	<b>43.783</b>		
STATE HIGHWAY			
VT-7A	3.047		
VT-11	1.991		
VT-30	2.480		
<b>TOTAL STATE HIGHWAY</b>	<b>7.518</b>		
US HIGHWAY			
US-7	7.520		
<b>TOTAL US HIGHWAY</b>	<b>7.520</b>		
US HIGHWAY - Ramp			
US-7	1.581		
<b>TOTAL US HIGHWAY - Ramp</b>	<b>1.581</b>		
<b>TOTAL STATE</b>	<b>16.619</b>		

LEGAL TRAIL NO.	LENGTH IN MILES
1	(0.04)
<b>TOTAL</b>	<b>0.04</b>

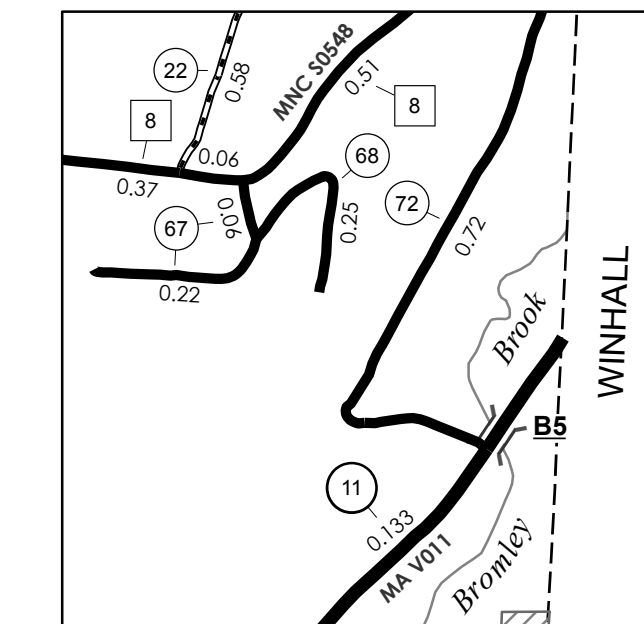
TOWN HWY. NO.	LENGTH IN MILES CLASS 3	LENGTH IN MILES CLASS 4							
8	0.500		24	0.380					
9	0.220		25	0.140					
10	0.350		26	0.600		(1.870)			
11		(0.060)	27						
11	1.800		28	0.230					
12	0.790		29	0.110					
13		(2.850)	31	0.540					
13		(0.500)	32	0.340					
14	0.340		33	0.150					
15	0.320		34	0.200					
16		(0.860)	35	0.620					
16	0.040		36	0.790					
18	0.450		37	0.520					
19	0.690		37		(1.000)				
20	1.040		38	0.130					
21	1.180		39		(0.150)				
22	0.580		40	0.040					
23	0.090		41	0.190					
			42	0.200					
			43	0.190					
			44	0.110					
			45	0.120					
			46	0.180					
			48	0.610					
			49	0.290					
			50		(0.200)				
			50	0.060					
			51	0.160					
			52	0.470					
			53	0.380					
			54	0.250					
			55	1.160					
			56	0.450					
			57	0.330					
			58	0.110					
			60	0.070					
			61	0.220					
			62	0.160					
			63	0.300					
			64	0.420					
			65	0.160					
			66	0.100					
			67	0.280					
			68	0.250					
			69	0.090					
			70	0.090					
			72	0.720					
			75	0.210					
			76	0.170					
			77	0.500					
			78	0.370					
			79	0.360					
			80	0.160					
			81	0.210					
			82	0.270					
			<b>TOTAL</b>	<b>23.550</b>				<b>7.490</b>	

\* Portion of this town highway is Class 3, but is functionally Class 4

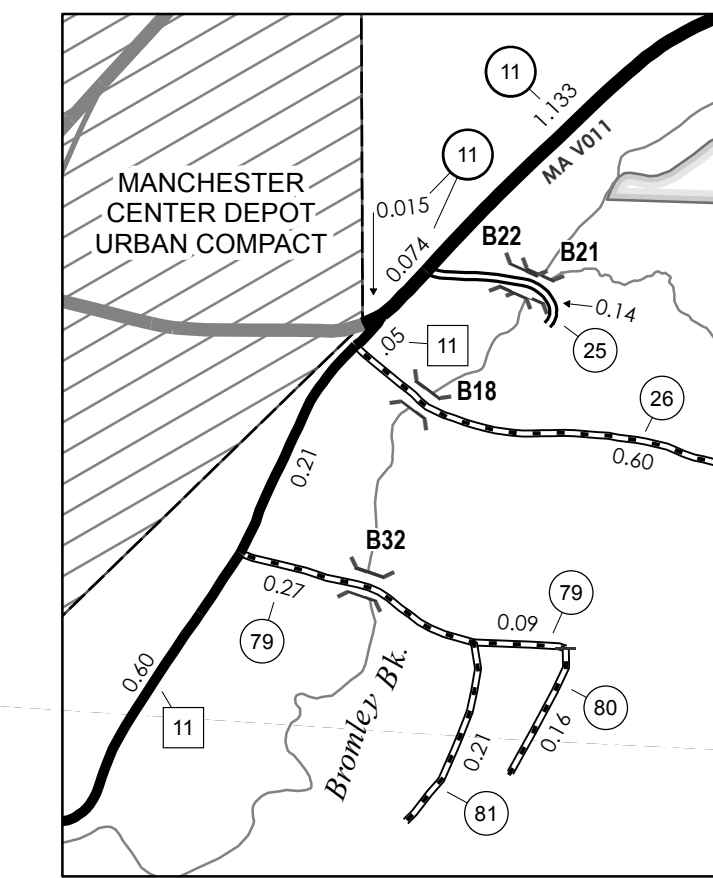
**TOTAL, TRAVELED HIGHWAYS, FEB. 10, 2011: 60.402**  
(Excludes Class 4, Legal Trail, and Unidentified Corridor Mileage)



INSET 3

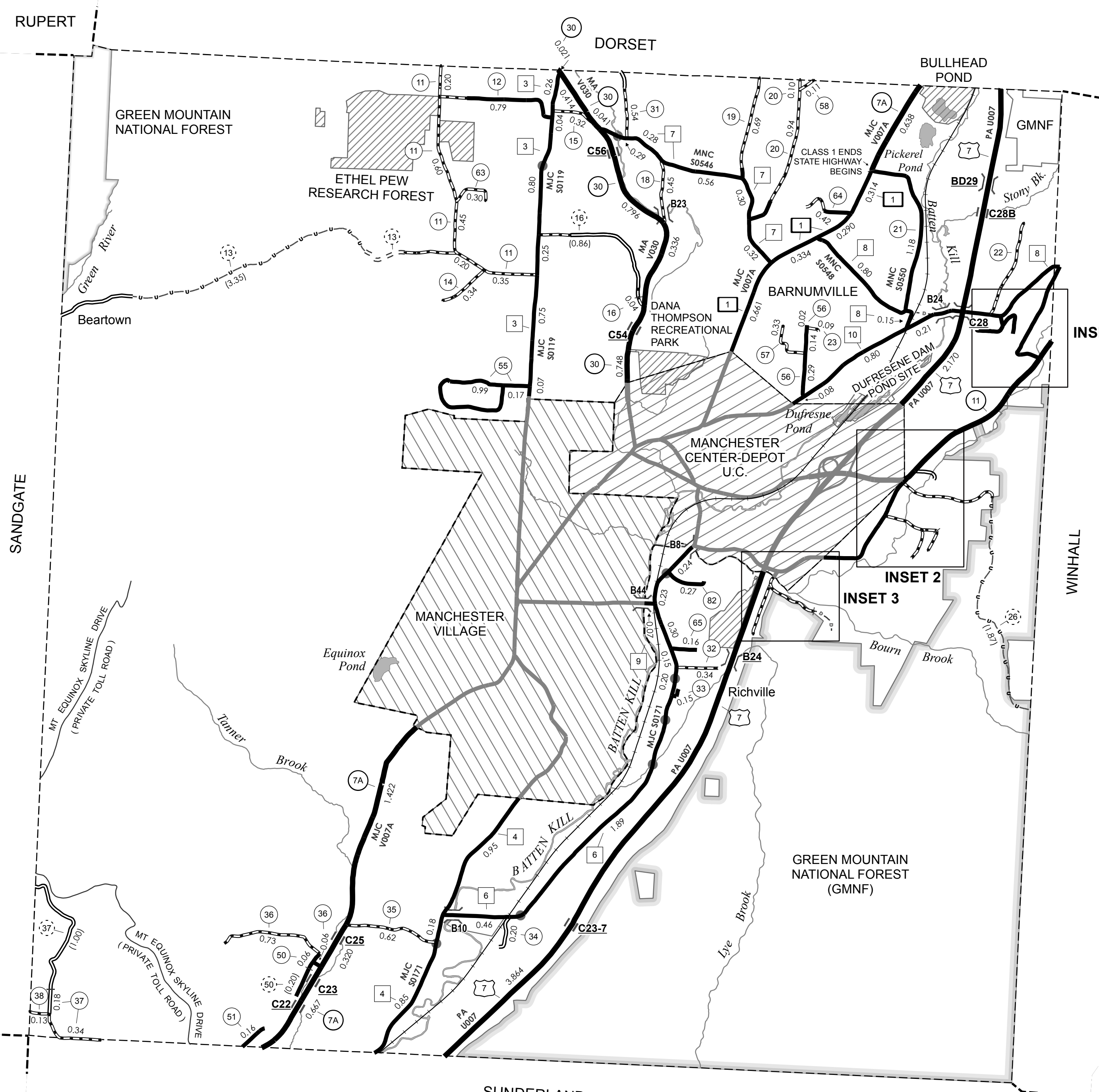
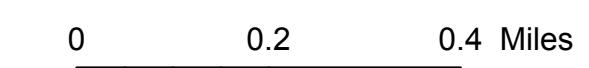


INSET 1



INSET 2

SCALE FOR INSETS 1:12672



- HIGHWAYS**
- INTERSTATE
  - U.S. ROUTE
  - STATE ROUTE
  - CLASS 1
  - CLASS 2
  - CLASS 3
  - CLASS 4
  - LEGAL TRAIL
  - INTERSTATE OR DIVIDED HIGHWAY
  - STATE - HARD SURFACE OR PAVED
  - TOWN - HARD SURFACE OR PAVED
  - PRIVATE
  - GRAVEL
  - SOIL OR GRADED AND DRAINED EARTH
  - UNIMPROVED OR PRIMITIVE
  - IMPASSABLE OR UNTRAVELED
  - LEGAL TRAIL
  - DISCONTINUED
  - HIGHWAY CLASS CHANGE
  - RAILROAD
  - INACTIVE RAILROAD

- PUBLIC LAND - STATE/MUNICIPAL
- PUBLIC LAND - GREEN MOUNTAIN NATIONAL FOREST
- POLITICAL SUBDIVISIONS**
- STATE BOUNDARY
- COUNTY BOUNDARY
- TOWN BOUNDARY
- VILLAGE BOUNDARY
- URBAN COMPACT BOUNDARY
- WATER BODY
- STREAM OR BROOK
- BRIDGE OR CULVERT**
- BRIDGE OR CULVERT GREATER THAN 20'
- BRIDGE OR CULVERT 6' - 20'
- TOWN SHORT STRUCTURE
- B34 / C34 STATE BRIDGE OR CULVERT IDENTIFIER**
- B34 / C34 TOWN BRIDGE OR CULVERT IDENTIFIER**
- FEDERAL CLASSIFICATION IDENTIFIER**
- FAU URBAN ARTERIAL OR COLLECTOR
- MA MINOR ARTERIAL
- MJC MAJOR COLLECTOR
- MNC MINOR COLLECTOR
- PA PRINCIPAL ARTERIAL

**STRUCTURES - SURFACE WATER NOTE:**

**STRUCTURES:**  
Town short structures (bridges or culverts from 6-feet to less than 20-feet) are drawn from the Vermont Online Bridge & Culvert Inventory Tool (VOBCIT) database.  
NOTE: Town shorts are not consistently tagged within VOBCIT.

**SURFACE WATERS:**  
The surface waters are from the Vermont Hydrological Dataset (VHD). Only the named streams are shown.

**DISCLAIMER:**

The untraveled highways (laid-out town highways), discontinued highways, and legal trails shown hereon are those of which the Agency of Transportation has record; others may exist.

Highway and bridge data by the Agency of Transportation. All other data from the Vermont Center for Geographic Information.

Vermont State Plane Coordinate System  
North American Datum of 1983  
SPCS Zone Identifier: 4400  
Geodetic Reference System 80  
4,000-meter grid, Easting - Northing

**VERMONT GENERAL HIGHWAY MAP**  
**Town of Manchester**

BENNINGTON COUNTY  
Transportation District #1  
Prepared by the  
Vermont Agency of Transportation  
Division of Policy, Planning & Intermodal Development  
in cooperation with  
U.S. Department of Transportation  
Federal Highway Administration

