

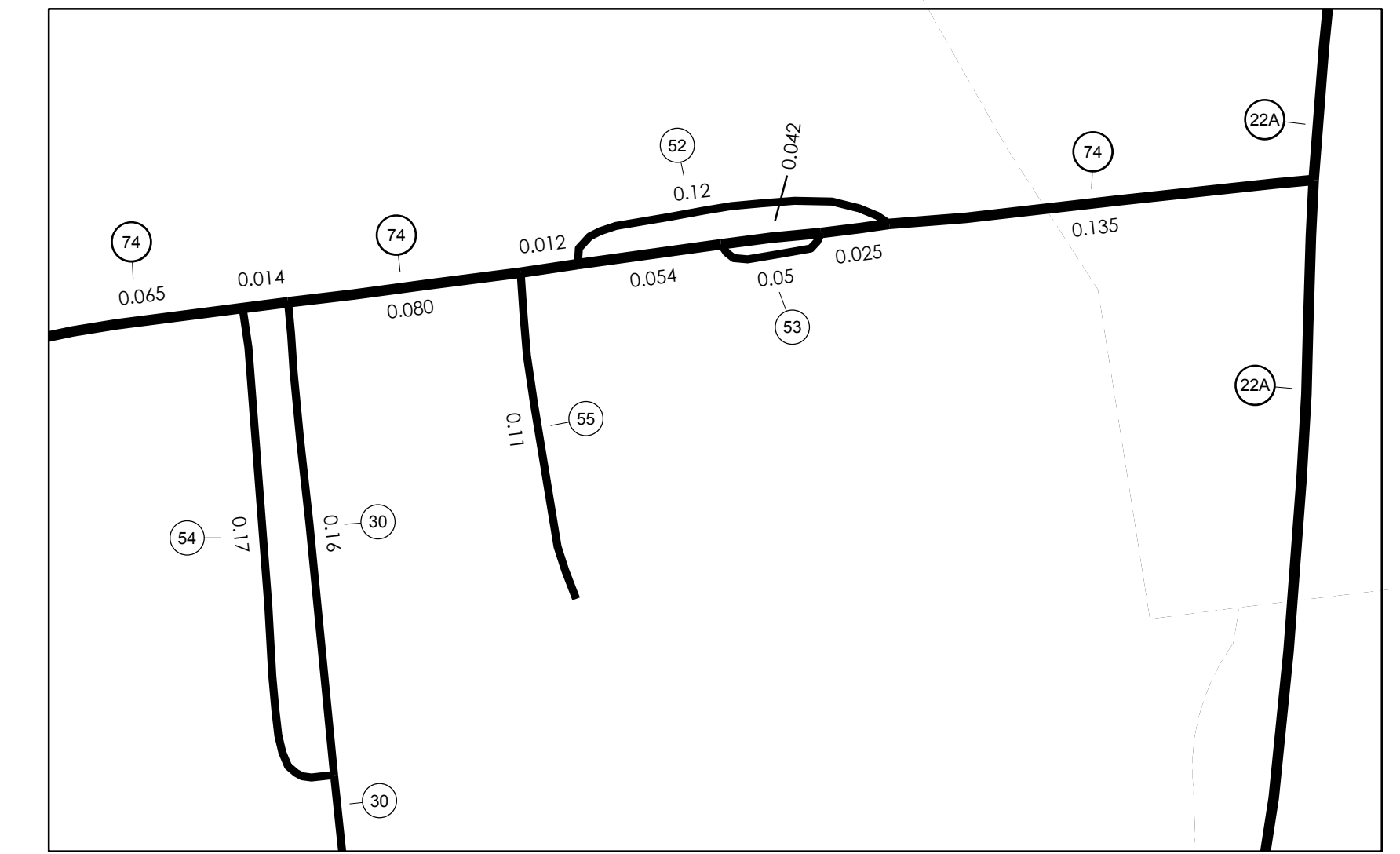
424,000 428,000 432,000 436,000 440,000 444,000 448,000

TOWN HWY. NO.	LENGTH IN MILES	CLASS
5	5.40	4
6	2.30	
7	3.45	
9	0.30	(0.45)
10	0.60	
11		(0.40)
12	0.45	
13	3.59	
14	2.34	
15	1.60	
16		(0.40)
17	0.85	
18	0.10	(0.15)
19	2.20	
20	0.35	
21	1.52	
22		(0.79)
23	0.74	(0.89)
24	0.40	
25		(0.35)
26	0.43	
27	0.86	
28	1.10	
29	1.10	
30	2.40	
31	0.29	
32		(0.45)
33		(0.60)
34		(0.41)
35	1.12	
36	2.70	
37	2.53	
38	0.35	
39	0.26	(0.14)
40	0.11	
41	0.95	
42	2.59	
43	1.62	
44	0.38	(0.97)
45	1.10	
46	0.45	
47	0.25	
48	1.30	
49	1.10	
50	0.10	
51	0.17	
52	0.16	
53	0.12	
54	0.05	
55	0.17	
56	0.11	
57	0.07	
58	0.25	
TOTAL	50.38	6.00

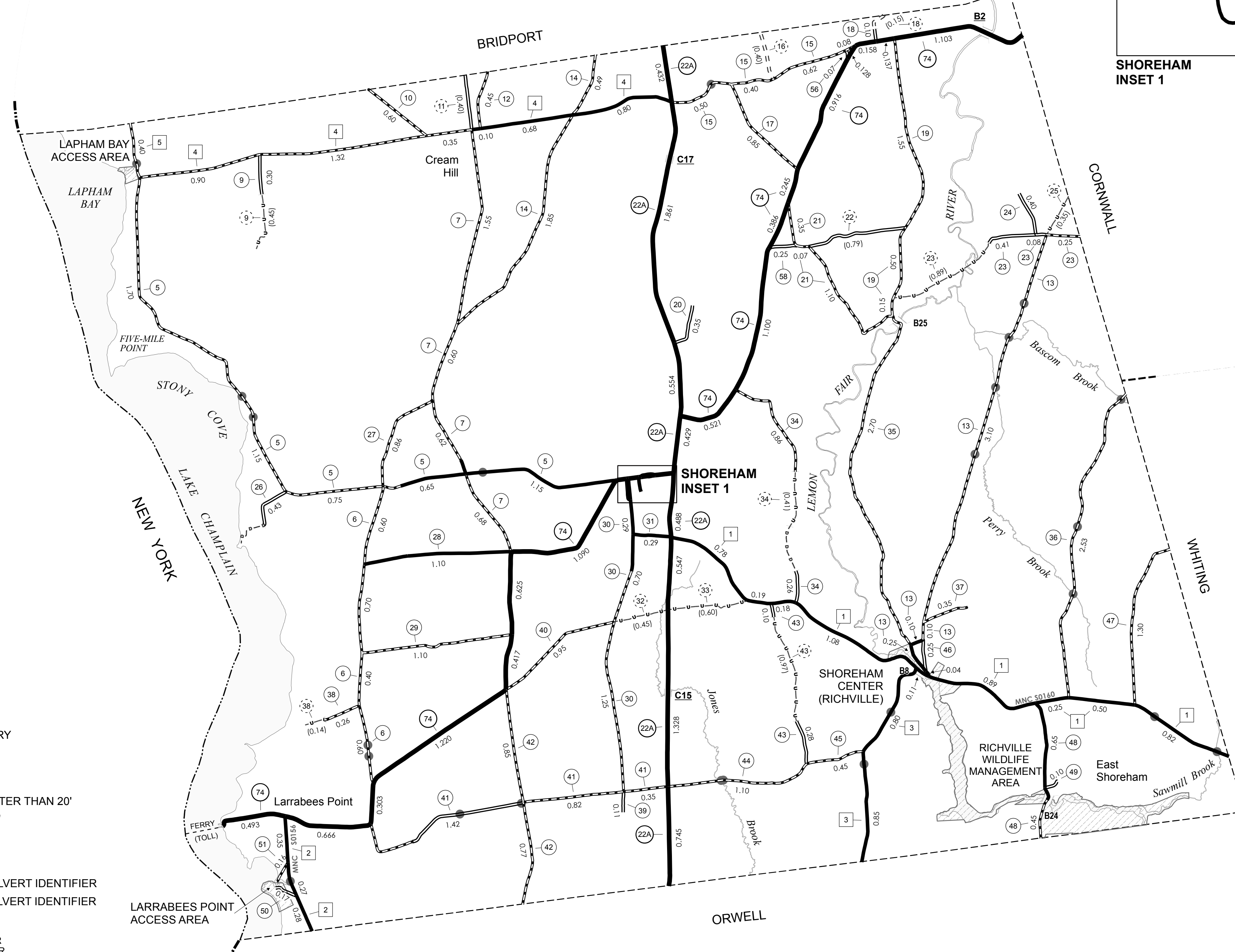
MILEAGE SUMMARY

CLASS 2		
TH-1	4.800	
TH-2	0.900	
TH-3	1.650	
TH-4	4.150	
TH-5	0.400	
TOTAL CLASS 2	11.900	
CLASS 3		
TOTAL CLASS 3	50.380	
TOTAL TOWN	62.280	
STATE HIGHWAY		
VT-22A	6.384	
VT-74	9.935	
TOTAL STATE HIGHWAY	16.319	
TOTAL STATE	16.319	

TOTAL, TRAVELED HIGHWAYS, FEB. 10, 2010: 78.599
(Excludes Class 4 and Legal Trail Mileage)



SHOREHAM INSET 1
INSET SCALE 1:3168
0 0.05 0.1 Miles



- HIGHWAYS**
- INTERSTATE
 - U.S. ROUTE
 - STATE ROUTE
 - CLASS 1
 - CLASS 2
 - CLASS 3
 - CLASS 4
 - LEGAL TRAIL
 - INTERSTATE OR DIVIDED HIGHWAY
 - STATE - HARD SURFACE OR PAVED
 - TOWN - HARD SURFACE OR PAVED
 - GRAVEL
 - SOIL OR GRADED AND DRAINED EARTH
 - UNIMPROVED OR PRIMITIVE
 - IMPASSABLE OR UNTRAVELED
 - LEGAL TRAIL
 - DISCONTINUED
 - HIGHWAY CLASS CHANGE
 - RAILROAD
 - FERRY

- POLITICAL SUBDIVISIONS**
- STATE BOUNDARY
 - COUNTY BOUNDARY
 - TOWN BOUNDARY
 - VILLAGE BOUNDARY
 - URBAN COMPACT BOUNDARY
 - WATER BODIES
 - STREAM OR BROOK
 - BRIDGE OR CULVERT
 - BRIDGE OR CULVERT GREATER THAN 20'
 - BRIDGE OR CULVERT 6' - 20'
 - TOWN SHORT STRUCTURE
 - B34 / C34 STATE BRIDGE OR CULVERT IDENTIFIER
 - B34 / C34 TOWN BRIDGE OR CULVERT IDENTIFIER
- FEDERAL CLASSIFICATION IDENTIFIER**
- FAU URBAN ARTERIAL OR COLLECTOR
 - MA MINOR ARTERIAL
 - MJC MAJOR COLLECTOR
 - MNC MINOR COLLECTOR
 - PA PRINCIPAL ARTERIAL

STRUCTURES - SURFACE WATER NOTE:

STRUCTURES: Town short structures (bridges or culverts from 4-feet to less than 20-feet) are drawn from the Vermont Online Bridge & Culvert Inventory Tool (VOBCIT) database.
NOTE: Town shorts are not consistently tagged within VOBCIT.

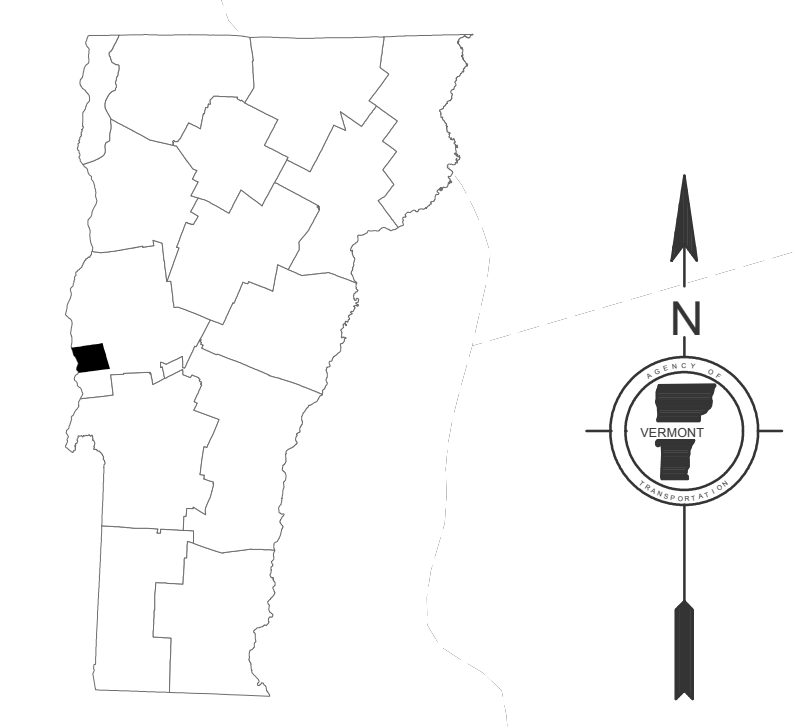
The surface waters are from the Vermont Hydrological Dataset (VHD). Only the named streams are shown.

DISCLAIMER:

The untraveled highways (laid-out town highways), discontinued highways, and legal trails shown hereon are those of which the Agency of Transportation has record; others may exist.

Highway and bridge data by the Agency of Transportation. All other data from the Vermont Center for Geographic Information.

Vermont State Plane Coordinate System
North American Datum of 1983
SPCS Zone Identifier: 4400
Geodetic Reference System 80
4,000-meter grid, Easting - Northing



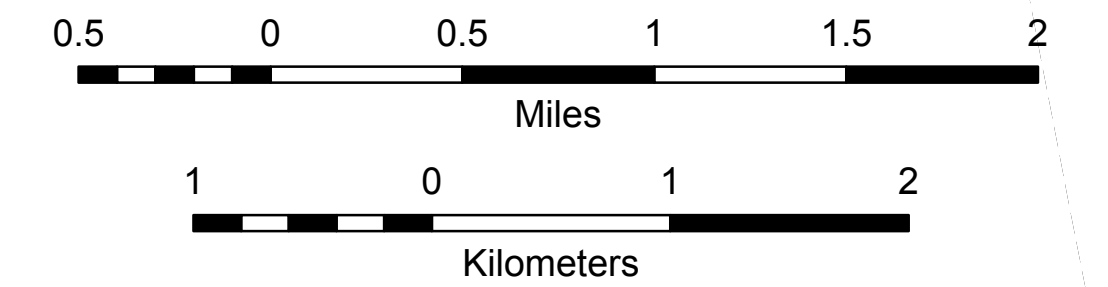
VERMONT GENERAL HIGHWAY MAP
Town of Shoreham

ADDISON COUNTY
Transportation District #5

Prepared by the
Vermont Agency of Transportation
Division of Planning, Outreach
and Community Affairs
in cooperation with
U.S. Department of Transportation
Federal Highway Administration

Mileage as of February 10, 2010
Map prepared May 21, 2010

SCALE 1:31,680



424,000 428,000 432,000 436,000 440,000 444,000 448,000