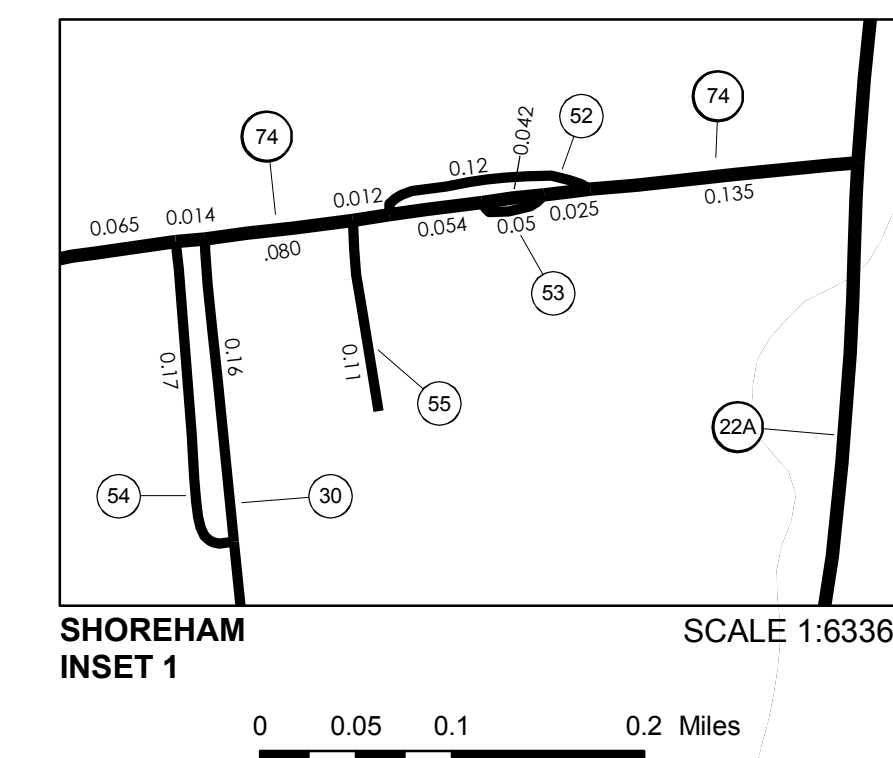
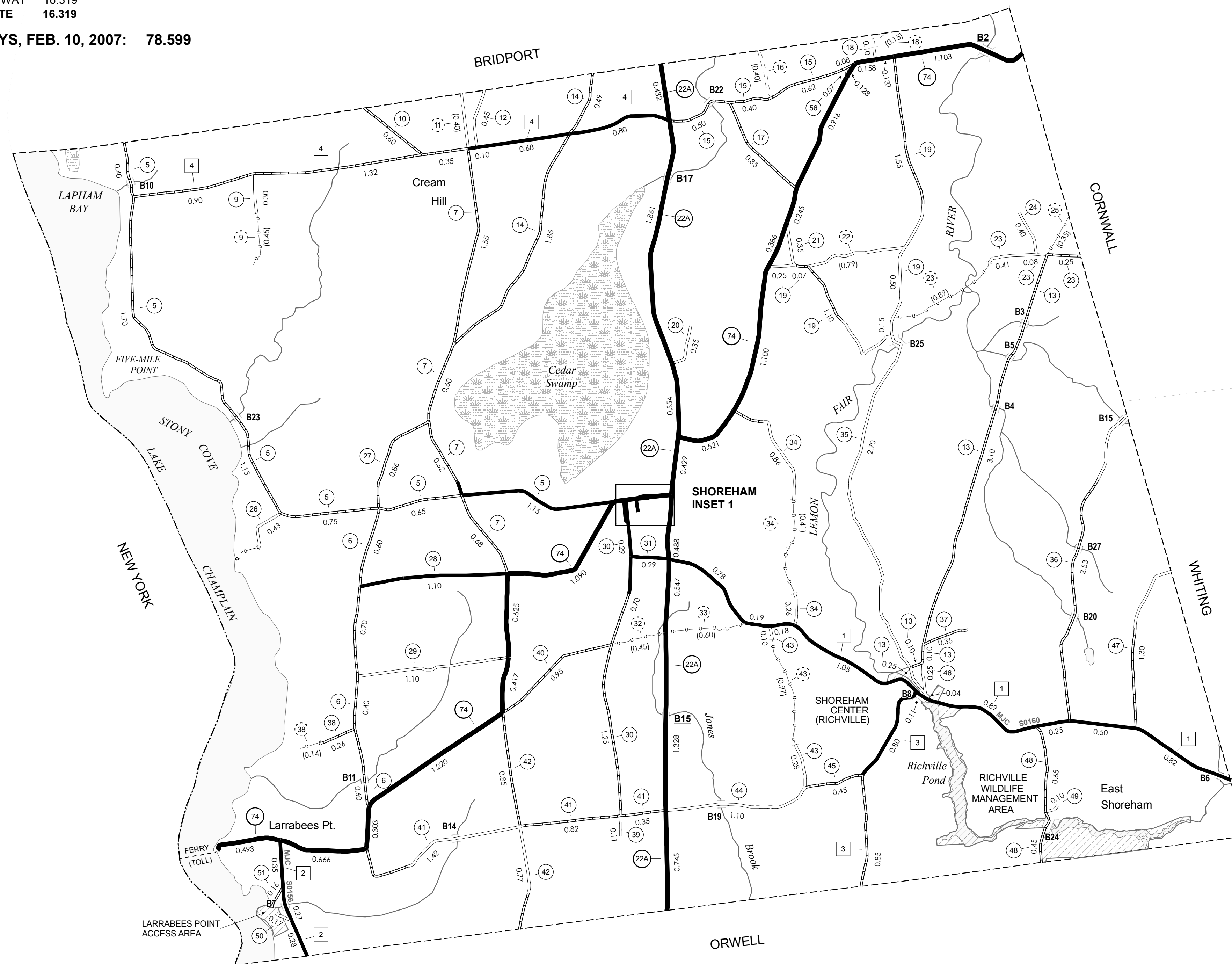


TOWN HWY. NO.	LENGTH IN MILES CLASS 3	LENGTH IN MILES CLASS 4
5	5.800	
6	2.300	
7	3.450	
9	0.300	(0.450)
10	0.600	
11		(0.400)
12	0.450	
13	3.500	
14	2.340	
15	1.600	
16		(0.400)
17	0.850	
18	0.100	(0.150)
19	3.620	
20	0.350	
21	0.350	
22		(0.790)
23	0.740	(0.890)
24	0.400	
25		(0.350)
26	0.430	
27	0.860	
28	1.100	
29	1.100	
30	2.400	
31	0.290	
32		(0.450)
33		(0.600)
34	1.120	(0.410)
35	2.700	
36	2.530	
37	0.350	
38	0.260	(0.140)
39	0.110	
40	0.950	
41	2.590	
42	1.620	
43	0.380	(0.970)
44	1.100	
45	0.450	
46	0.250	
47	1.300	
48	1.100	
49	0.100	
50	0.170	
51	0.160	
52	0.120	
53	0.050	
54	0.170	
55	0.110	
56	0.070	
TOTAL	50.780	6.000

MILEAGE SUMMARY

CLASS 2		
TH-1	4.800	
TH-2	0.900	
TH-3	1.650	
TH-4	4.150	
TOTAL CLASS 2	11.500	
CLASS 3		
TOTAL CLASS 3	50.780	
TOTAL TOWN	62.280	
STATE HIGHWAY		
VT-22A	6.384	
VT-74	9.935	
TOTAL STATE HIGHWAY	16.319	
TOTAL STATE	16.319	

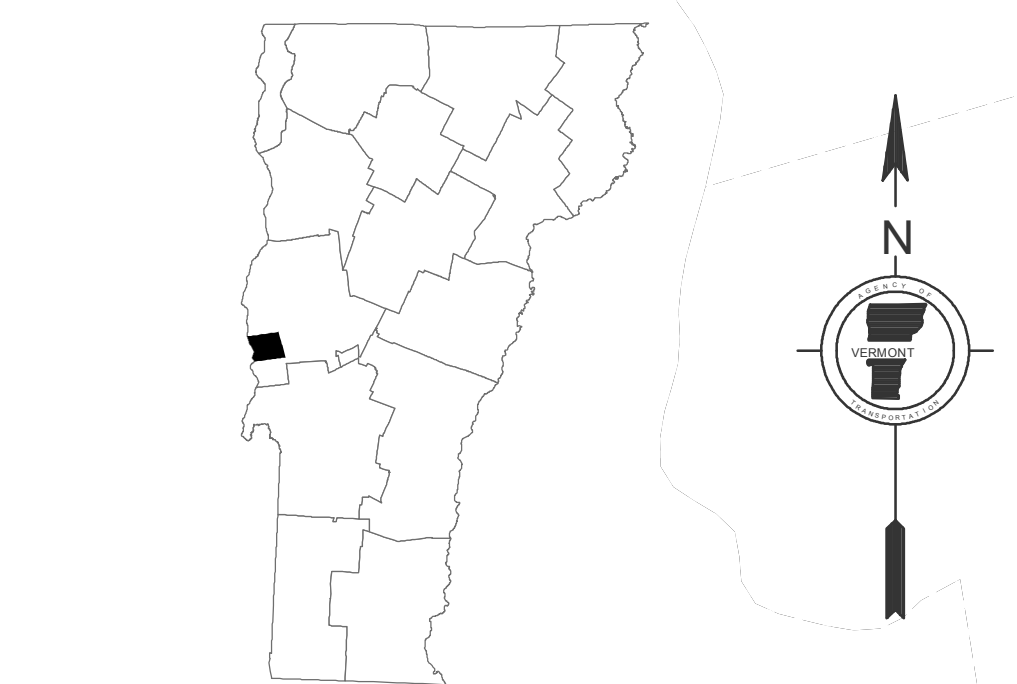
TOTAL, TRAVELED HIGHWAYS, FEB. 10, 2007: 78.599
(Excludes Class 4 Mileage)



- HIGHWAYS**
- INTERSTATE
 - U.S. ROUTE
 - STATE ROUTE
 - CLASS 1
 - CLASS 2
 - CLASS 3
 - CLASS 4
 - LEGAL TRAIL
 - INTERSTATE OR DIVIDED HIGHWAY
 - STATE - HARD SURFACE OR PAVED
 - TOWN - HARD SURFACE OR PAVED
 - GRAVEL
 - SOIL OR GRADED AND DRAINED EARTH
 - UNIMPROVED OR PRIMITIVE
 - IMPASSABLE OR UNTRAVELED
 - LEGAL TRAIL
 - DISCONTINUED
 - HIGHWAY CLASS CHANGE
 - RAILROAD
 - FERRY
- POLITICAL SUBDIVISIONS**
- STATE BOUNDARY
 - COUNTY BOUNDARY
 - TOWN BOUNDARY
 - VILLAGE BOUNDARY
 - URBAN COMPACT BOUNDARY
- WATER BODIES**
- OPEN WATER
 - SWAMP
 - STREAM OR BROOK
- BRIDGE OR CULVERT**
- BRIDGE OR CULVERT GREATER THAN 20'
 - BRIDGE OR CULVERT 6' - 20'
- B34 STATE BRIDGE IDENTIFIER**
- B34 TOWN BRIDGE IDENTIFIER**
- FEDERAL CLASSIFICATION IDENTIFIER**
- FAU URBAN ARTERIAL OR COLLECTOR
 - MA MINOR ARTERIAL
 - MJC MAJOR COLLECTOR
 - MNC MINOR COLLECTOR
 - PA PRINCIPAL ARTERIAL

DISCLAIMER:
The untraveled highways (laid-out town highways), discontinued highways, and legal trails shown hereon are those of which the Agency of Transportation has record; others may exist.
Highway and bridge data by the Agency of Transportation, Policy & Planning Division. All other data from the Vermont Center for Geographic Information.

Vermont State Plane Coordinate System
North American Datum of 1983
SPCS Zone Identifier: 4400
Geodetic Reference System 80
4,000-meter grid, Easting - Northing



VERMONT
GENERAL HIGHWAY MAP
Town of Shoreham
ADDISON COUNTY

Transportation District #5

Prepared by the
Vermont Agency of Transportation
Policy & Planning Division
in cooperation with
U.S. Department of Transportation
Federal Highway Administration

Mileage as of: Feb. 10, 2007
Map generated: October, 2007

