

TOWN HWY. No.	LENGTH IN MILES CLASS 3	LENGTH IN MILES CLASS 4	TOWN HWY. No.	LENGTH IN MILES CLASS 3	LENGTH IN MILES CLASS 4
6	3.87		72	0.15	
7	1.80		73	1.54	
8	1.56		74	0.57	
9	1.05		75	0.11	
10	0.36		76	0.11	
11	1.44	(0.10)	77	0.34	
13	1.10		78	0.20	
14	0.32		79	0.04	
15	0.36	(0.50)	80	0.09	
16	0.70		81	0.09	
17	0.35		82	0.32	
19	3.70	(0.99)	83	0.16	
20	0.92		84	0.32	
21	0.32		85	0.08	
22	0.67		86	0.11	
23	0.80		87	0.07	
24	1.26		88	0.07	
25	0.09		89	0.16	
26	0.35		90	0.43	
27	1.95		91	0.39	
28	0.42		92	0.26	
29	0.25		93	0.10	
30		(0.07)	94	0.15	
31	0.51	(0.04)	95	0.08	
33	0.10		96	0.12	
34	0.33		97	0.69	
35	1.95		98	0.18	
36	0.69	(0.10)	99	0.15	
37			100	0.25	
38	0.26		101	0.35	
39	0.27		105	0.24	
40	0.56		106	0.06	
41	0.15		107	0.04	
42	0.10		108	0.04	
43	0.21		109	0.34	
44	0.10		110	0.10	
45	0.27		111	0.85	
46	0.49		112	0.20	
47	0.17		113	0.34	
48	0.03	(0.93)	114		
49	0.05		115	0.09	
50	0.05		116	0.14	
51	0.21		117	0.21	
52	0.16		118	0.61	
53	0.04		119	0.18	
54	0.26		120	0.17	
55	0.26		121	0.04	
56	0.09		122	0.10	
57	0.19		123	0.10	
58	0.17		124	0.12	
61	0.23		125	0.05	
62	0.06		126	0.30	
63	0.12		127	0.08	
64	0.53		128	0.20	
65	0.19		129	0.21	
66	0.25		130	0.22	
68	0.20		131	0.13	
69	0.06		132	0.16	
70	0.21		133	0.55	
71	0.09		134	0.09	
TOTAL	46.45	2.73			

LEGAL TRAIL No.	LENGTH IN MILES LEGAL TRAIL
1	(0.65)
TOTAL	0.65

TOWN HWY. No.	LENGTH IN MILES "NOT UP TO STANDARD"
31	(0.13)
60	(0.03)
TOTAL	0.16

* The sections of the town highways listed above are legally Class 3, but have been deemed "Not Up To Standard" and are functionally Class 4 Town Highways

MILEAGE SUMMARY

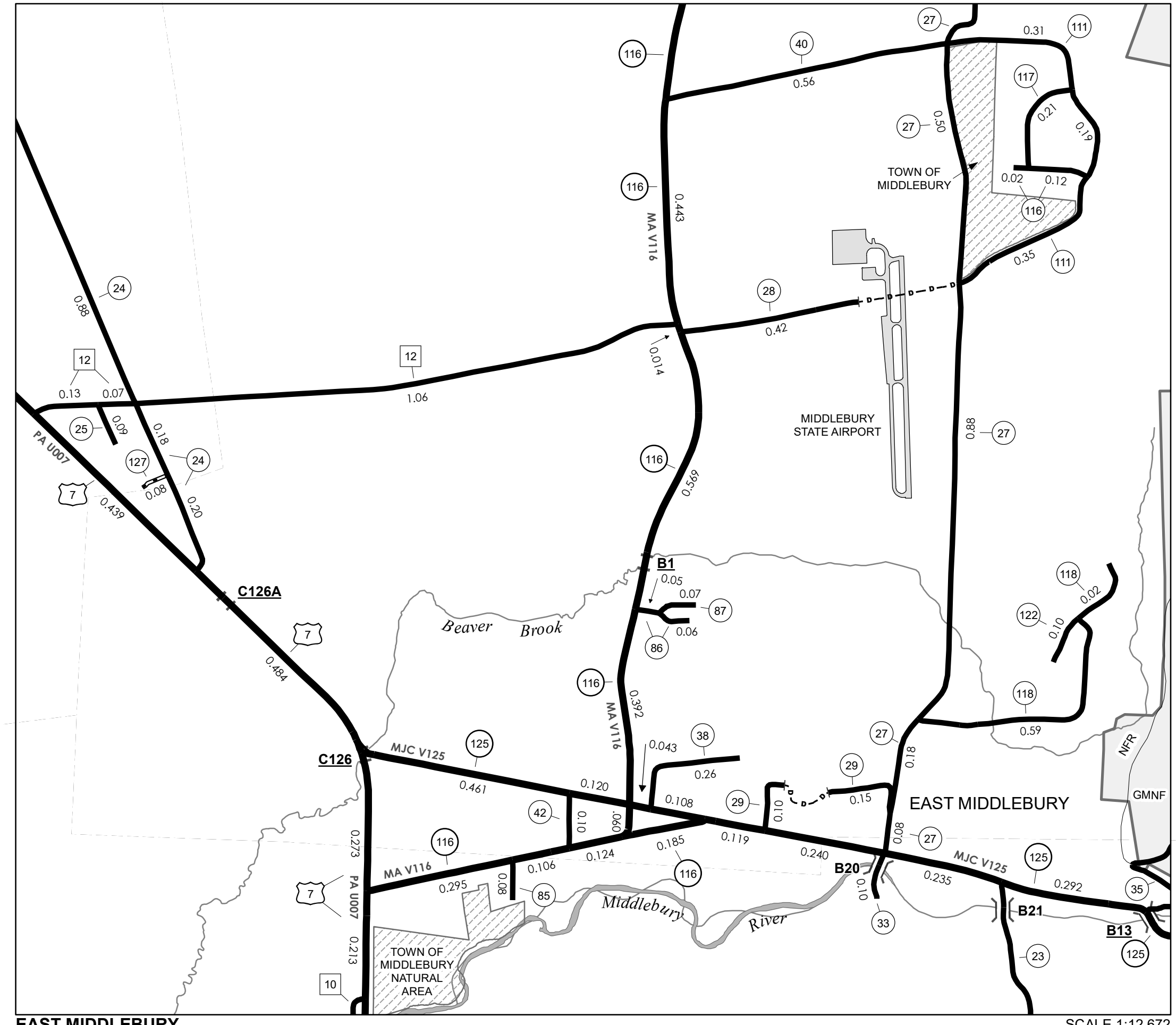
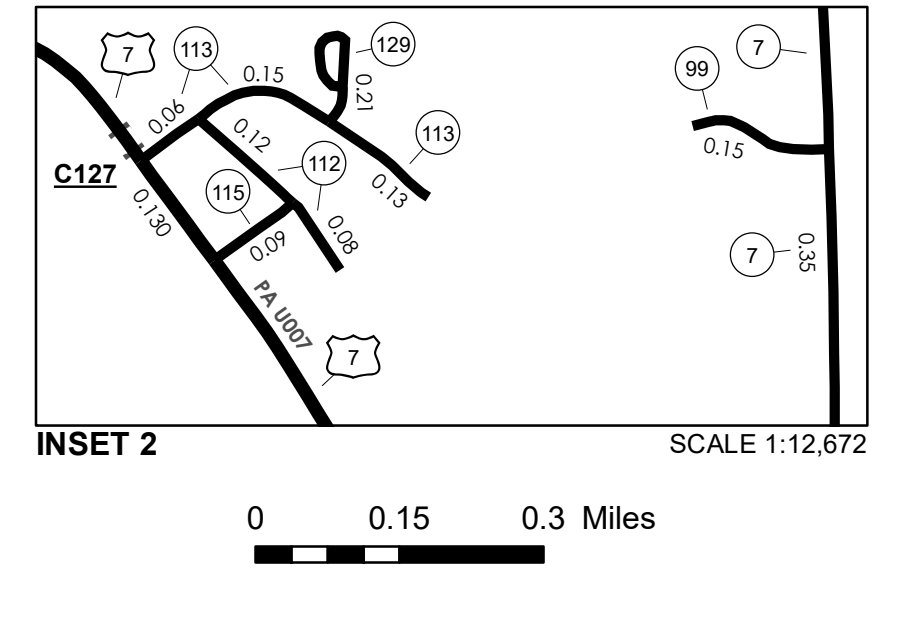
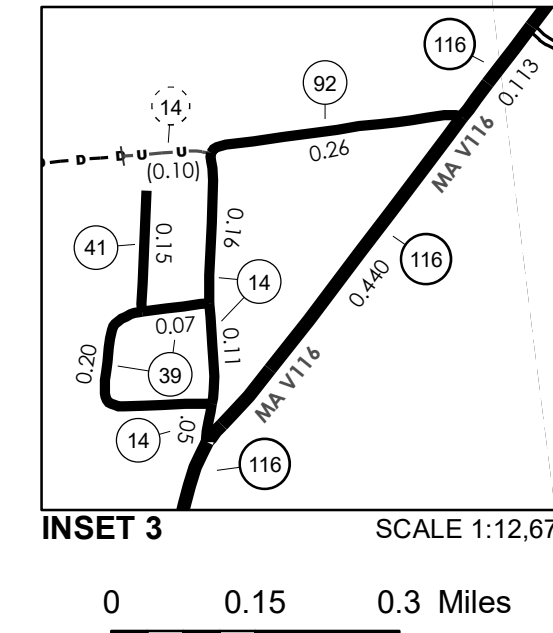
CLASS	LENGTH IN MILES	TOTAL CLASS	TOTAL TOWN
CLASS 1			
TH-1	1.538		
TH-2	1.326		
TH-3	0.646		
TH-4	0.065		
TH-5	0.314		
TOTAL CLASS 1	3.889		
CLASS 2			
TH-4	0.770		
TH-5	0.960		
TH-6	4.280		
TH-7	3.500		
TH-8	0.100		
TH-9	2.000		
TH-10	2.120		
TH-11	0.700		
TH-12	1.260		
TH-13	0.030		
TOTAL CLASS 2	15.720		
CLASS 3			
TOTAL CLASS 3	46.45		
TOTAL TOWN	66.059		
STATE HIGHWAY			
VT-30	0.550		
VT-116	6.759		
VT-125	3.395		
TOTAL STATE HIGHWAY	10.704		
STATE HIGHWAY - Ramps			
VT-116	0.013		
VT-125	0.046		
TOTAL STATE HIGHWAY - Ramps	0.059		
US HIGHWAY			
US-7	6.032		
TOTAL US HIGHWAY	6.032		
TOTAL STATE	16.795		

TOTAL, TRAVELED HIGHWAYS, FEB. 10, 2020: 82.854
(Excludes Class 4 and Legal Trail Mileage)

DISCLAIMER:
The untraveled highways (laid-out town highways), discontinued highways, and legal trails herein are those of which the Agency of Transportation has record; others may exist.

Highway and bridge data by the Agency of Transportation.
Town short structures drawn from the VTCULVERTS (formerly VOBCIT) online database. All other data from the Vermont Open Geodata Portal. Only named streams shown.

Vermont State Plane Coordinate System
North American Datum of 1983
SPCS_Zone_Identifier: 4400
Geodetic Reference System 80
4,000-meter grid, Easting - Northing



EAST MIDDLEBURY INSET 1 SCALE 1:12,672

- HIGHWAYS**
- INTERSTATE
 - U.S. ROUTE
 - STATE ROUTE
 - CLASS 1
 - CLASS 2
 - CLASS 3
 - CLASS 4
 - LEGAL TRAIL
 - GRAVEL
 - SOIL OR GRADED AND DRAINED EARTH
 - UNIMPROVED OR PRIMITIVE
 - IMPASSABLE OR UNTRAVELED
 - LEGAL TRAIL
 - DISCONTINUED
 - HIGHWAY CLASS CHANGE
 - RAILROAD
 - INACTIVE RAILROAD
 - PUBLIC LAND - NATIONAL FOREST
 - PUBLIC LAND - STATE/MUNICIPAL
- POLITICAL SUBDIVISIONS**
- STATE BOUNDARY
 - COUNTY BOUNDARY
 - TOWN BOUNDARY
 - VILLAGE BOUNDARY
 - URBAN COMPACT BOUNDARY
 - WATER BODY
 - STREAM OR BROOK
- BRIDGE OR CULVERT**
- BRIDGE OR CULVERT > 20'
 - BRIDGE OR CULVERT 6' - 20'
 - BIKE PATH STRUCTURE
 - VT CULVERTS BRIDGE
 - VT CULVERTS CULVERT > 6'
- B34 / C34** STATE BRIDGE OR CULVERT IDENTIFIER
B34 / C34 TOWN BRIDGE OR CULVERT IDENTIFIER
- NFR** NATIONAL FOREST ROAD
SFH STATE FOREST HIGHWAY
P PARK AND RIDE
- FEDERAL CLASSIFICATION IDENTIFIER**
- MA MINOR ARTERIAL
 - MJC MAJOR COLLECTOR
 - MNC MINOR COLLECTOR
 - PA PRINCIPAL ARTERIAL

VERMONT GENERAL HIGHWAY MAP
Town of Middlebury
ADDISON COUNTY
Transportation District #5

Prepared by the
Vermont Agency of Transportation
Division of Policy, Planning and Intermodal Development
in cooperation with
U.S. Department of Transportation
Federal Highway Administration

Mileage as of February 10, 2020
Map prepared July 13, 2020
SCALE 1:31,680