

TOWN HWY. NO.	CLASS 3	CLASS 4
4	4.050	
5	3.750	
6	2.950	
7	1.200	
8	0.440	(0.150)
9	0.060	(0.780)
10		(1.400)
11	1.450	
12		(1.090)
13	2.520	
14	0.950	
15	1.080	
16	1.600	
17	0.550	
18	0.560	(1.340)
19	0.200	
20	0.450	(0.070)
21	0.550	
22		(0.250)
23	0.070	
24	3.640	
25	1.700	
26	0.160	
28	1.470	
30	0.070	
31	0.220	
32	0.350	
33	0.190	
34	0.210	
TOTAL	30.440	5.080

MILEAGE SUMMARY			
CLASS 2			
TH-1	3.750		
TH-2	3.400		
	TOTAL CLASS 2	7.150	
CLASS 3			
	TOTAL CLASS 3	30.440	
	TOTAL TOWN	37.590	
STATE HIGHWAY			
VT-17	11.133		
VT-22A	6.315		
VT-125	1.886		
	TOTAL STATE HIGHWAY	19.334	
STATE HIGHWAY - Ramp			
VT-125	0.052		
	TOTAL STATE HIGHWAY - Ramp	0.052	
	TOTAL STATE	19.386	

TOTAL, TRAVELED HIGHWAYS, FEB. 10, 2007: 56.976
 (Excludes Class 4 and Legal Trail Mileage)

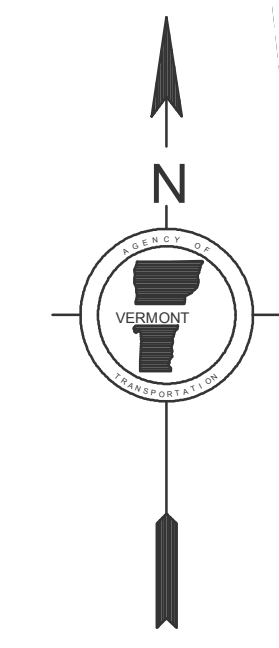
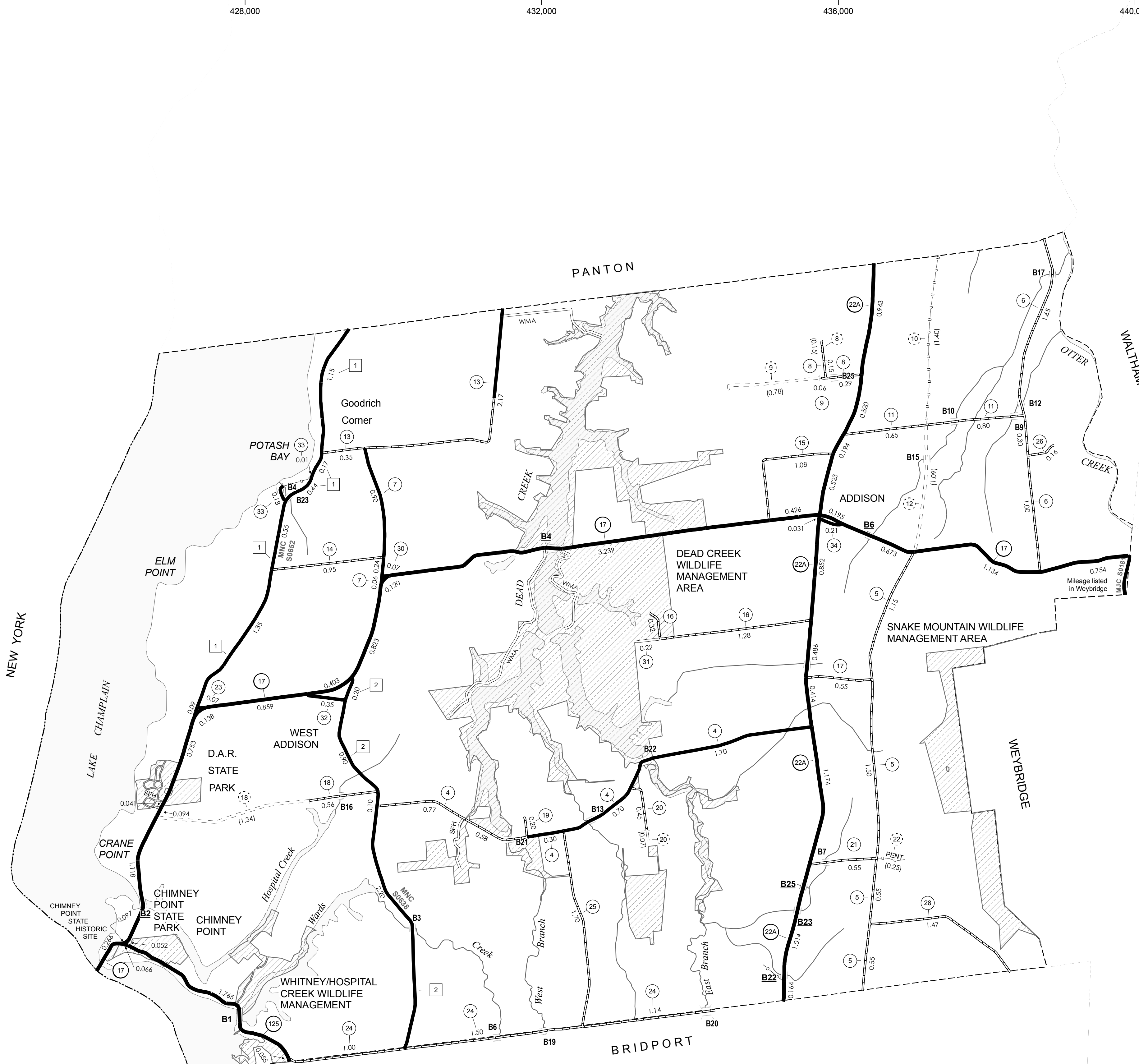
- HIGHWAYS**
- INTERSTATE
 - U.S. ROUTE
 - STATE ROUTE
 - CLASS 1
 - CLASS 2
 - CLASS 3
 - CLASS 4
 - INTERSTATE OR DIVIDED HIGHWAY
 - STATE - HARD SURFACE OR PAVED
 - TOWN - HARD SURFACE OR PAVED
 - GRAVEL
 - SOIL OR GRADED AND DRAINED EARTH
 - UNIMPROVED OR PRIMITIVE
 - IMPASSABLE OR UNTRAVELED
 - LEGAL TRAIL
 - DISCONTINUED
 - HIGHWAY CLASS CHANGE
 - RAILROAD
 - SFH STATE FOREST HIGHWAY
 - WMA WILDLIFE MANAGEMENT AREA HIGHWAY

- PUBLIC LAND
- POLITICAL SUBDIVISIONS**
- STATE BOUNDARY
 - COUNTY BOUNDARY
 - TOWN BOUNDARY
 - VILLAGE BOUNDARY
 - URBAN COMPACT
- WATER BODIES**
- OPEN WATER
 - SWAMP
 - STREAM OR BROOK
- BRIDGE OR CULVERT**
- BRIDGE OR CULVERT GREATER THAN 20'
 - BRIDGE OR CULVERT 6' - 20'
- B34 STATE BRIDGE IDENTIFIER**
B34 TOWN BRIDGE IDENTIFIER

- FEDERAL CLASSIFICATION IDENTIFIER**
- FAU URBAN ARTERIAL OR COLLECTOR
 - MA MINOR ARTERIAL
 - MJC MAJOR COLLECTOR
 - MNC MINOR COLLECTOR
 - PA PRINCIPAL ARTERIAL

DISCLAIMER:
 The untraveled highways (laid-out town highways), discontinued highways, and legal trails shown herein are those of which the Agency of Transportation has record; others may exist.
 Highway and bridge data by the Agency of Transportation, Policy & Planning Division. All other data from the Vermont Center for Geographic Information.

Vermont State Plane Coordinate System
 North American Datum of 1983
 SPCS_Zone_Identifier: 4400
 Geodetic Reference System 80
 4,000-meter grid, Easting - Northing



VERMONT
GENERAL HIGHWAY MAP
Town of Addison
 ADDISON COUNTY

Transportation District #5

Prepared by the
 Vermont Agency of Transportation
 Policy & Planning Division
 in cooperation with
 U.S. Department of Transportation
 Federal Highway Administration

Mileage as of: Feb. 10, 2007
 Map generated: October, 2007

