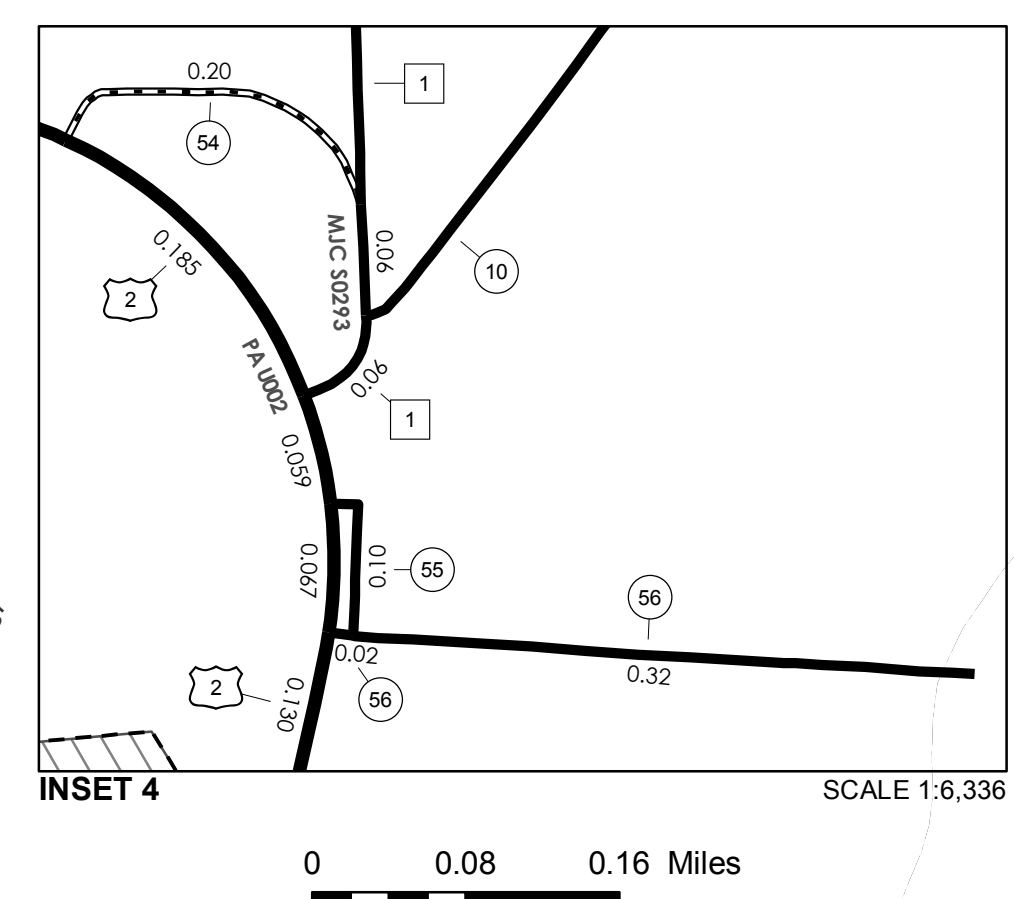
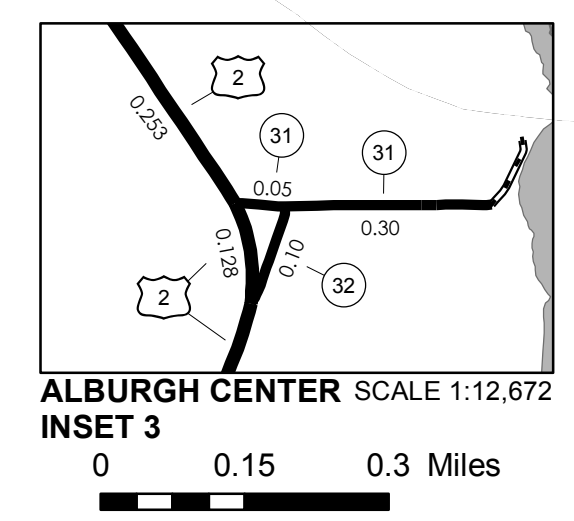
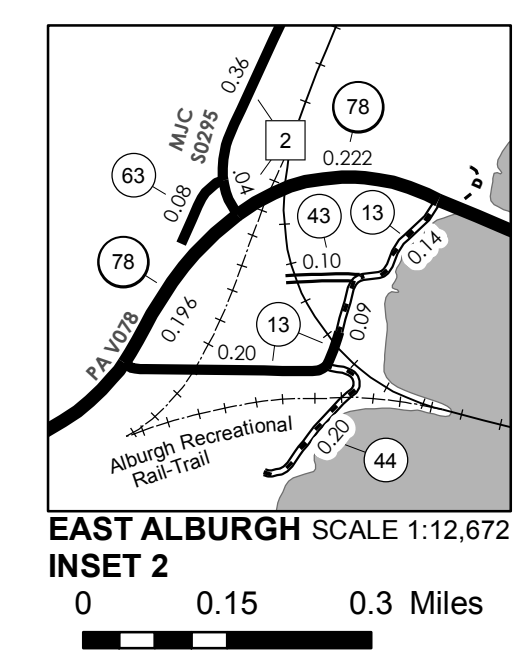
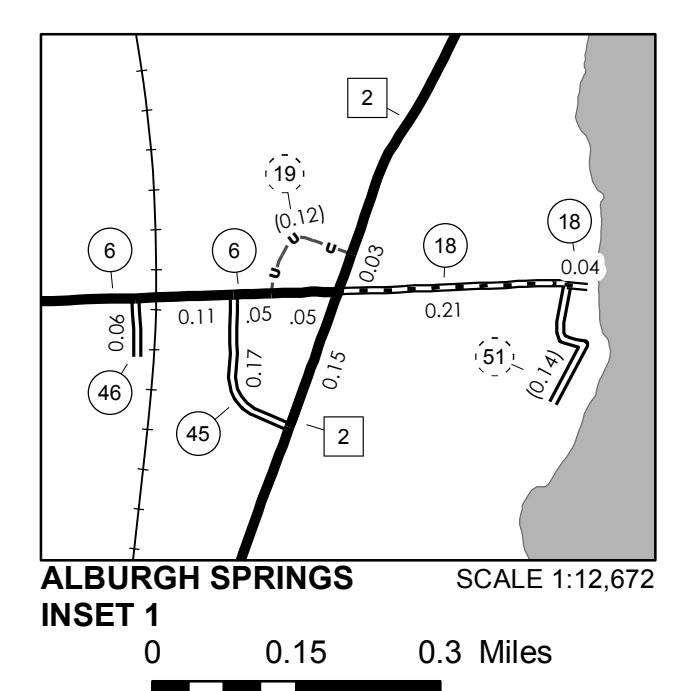


TOWN HWY. No.	LENGTH IN MILES CLASS 3	CLASS 4
6	2.38	
7	1.07	
8	1.70	
9	0.39	
10	1.80	
11	3.55	
12	0.20	
13	0.43	
14		(0.55)
15	1.26	
16	1.19	
17	1.27	
18	0.25	
19		(0.12)
20	1.50	
21	0.15	
22	0.20	
23	0.15	
24	0.42	
25	0.13	
26	0.14	(0.16)
27	0.38	
28	0.67	
29		(0.20)
31	0.35	
32	0.10	
33	2.18	
34		(0.45)
35	1.47	
36	1.64	
37		(0.10)
38	2.10	
39	0.20	
43	0.10	
44	0.20	
45	0.17	
46	0.06	
47	0.65	
48	0.06	
51		(0.14)
52	0.08	
53	0.35	
54	0.20	
55	0.10	
56	0.34	
57	0.11	
58	0.70	
59	0.43	
60	0.29	
61	0.13	
62	0.14	
63	0.08	
TOTAL	31.46	1.72

MILEAGE SUMMARY

CLASS	LENGTH	TOTAL
CLASS 2		
TH-1	1.590	
TH-2	2.840	
TH-3	4.450	
TH-4	1.830	
TOTAL CLASS 2		10.710
CLASS 3		
TOTAL CLASS 3		31.46
TOTAL TOWN		42.170
STATE HIGHWAY		
VT-78	3.333	
VT-129	2.739	
TOTAL STATE HIGHWAY		6.072
US HIGHWAY		
US-2	11.732	
TOTAL US HIGHWAY		11.732
TOTAL STATE		17.804

TOTAL, TRAVELED HIGHWAYS, FEB. 10, 2014: 59.974
(Excludes Class 4, Legal Trail, and Unidentified Corridor Mileage)



VERMONT
GENERAL HIGHWAY MAP
Town of Alburgh
 GRAND ISLE COUNTY
 Transportation District #8
 Prepared by the
 Vermont Agency of Transportation
 Division of Policy, Planning and Intermodal Development
 in cooperation with
 U.S. Department of Transportation
 Federal Highway Administration
 Mileage as of February 10, 2014
 Map prepared October 06, 2014
 SCALE 1:31,680

HIGHWAYS

- INTERSTATE
- U.S. ROUTE
- STATE ROUTE
- CLASS 1
- CLASS 2
- CLASS 3
- CLASS 4
- LEGAL TRAIL

BRIDGE OR CULVERT

- BRIDGE OR CULVERT > 20'
- BRIDGE OR CULVERT 6' - 20'
- VOBCIT BRIDGE
- VOBCIT CULVERT > 6'
- B34 / C34 STATE BRIDGE OR CULVERT IDENTIFIER
- B34 / C34 TOWN BRIDGE OR CULVERT IDENTIFIER

PUBLIC LAND - GREEN MOUNTAIN NATIONAL FOREST

PUBLIC LAND - STATE/MUNICIPAL

POLITICAL SUBDIVISIONS

- STATE BOUNDARY
- COUNTY BOUNDARY
- TOWN BOUNDARY
- VILLAGE BOUNDARY
- URBAN COMPACT BOUNDARY

FEDERAL CLASSIFICATION IDENTIFIER

- FAU URBAN ARTERIAL OR COLLECTOR
- MA MINOR ARTERIAL
- MJC MAJOR COLLECTOR
- MNC MINOR COLLECTOR
- PA PRINCIPAL ARTERIAL

DISCLAIMER:
The untraveled highways (laid-out town highways), discontinued highways, and legal trails hereon are those of which the Agency of Transportation has record; others may exist.

Highway and bridge data by the Agency of Transportation. Town short structures are drawn from the Vermont Online Bridge & Culvert Inventory Tool (VOBCIT) database. All other data from the Vermont Center for Geographic Information. Only named streams are shown.

Vermont State Plane Coordinate System
North American Datum of 1983
SPCS_Zone_Identifier: 4400
Geodetic Reference System 80
4,000-meter grid, Easting - Northing

TOWN HWY. No.	LENGTH IN MILES		TOWN ROAD NAME
	CLASS 3	CLASS 4	
21	0.13		CHAMPLAIN ST
23	0.15		SOWLES ST
24	0.42		LAKE ST
25	0.13		VANTINE AV
48	0.06		PETERSON PL
52	0.08		WINTERS LN
53	0.06		JARVIS LN
53	0.29		WINTERS LN
57	0.11		MILK ST
58	0.06		FIRE HOUSE RD
59	0.20		INDUSTRIAL PK RD
61	0.08		WOOD LN
62	0.14		WINTERS LANE EXT
TOTAL	1.91	0.00	

MILEAGE SUMMARY

CLASS 2			
TH-3	0.060		0.060
	TOTAL CLASS 2		0.060
CLASS 3			
		TOTAL CLASS 3	1.91
		TOTAL TOWN	1.970
US HIGHWAY			
US-2	1.429		1.429
	TOTAL US HIGHWAY		1.429
		TOTAL STATE	1.429
TOTAL, TRAVELED HIGHWAYS, FEB. 10, 2014:			3.399

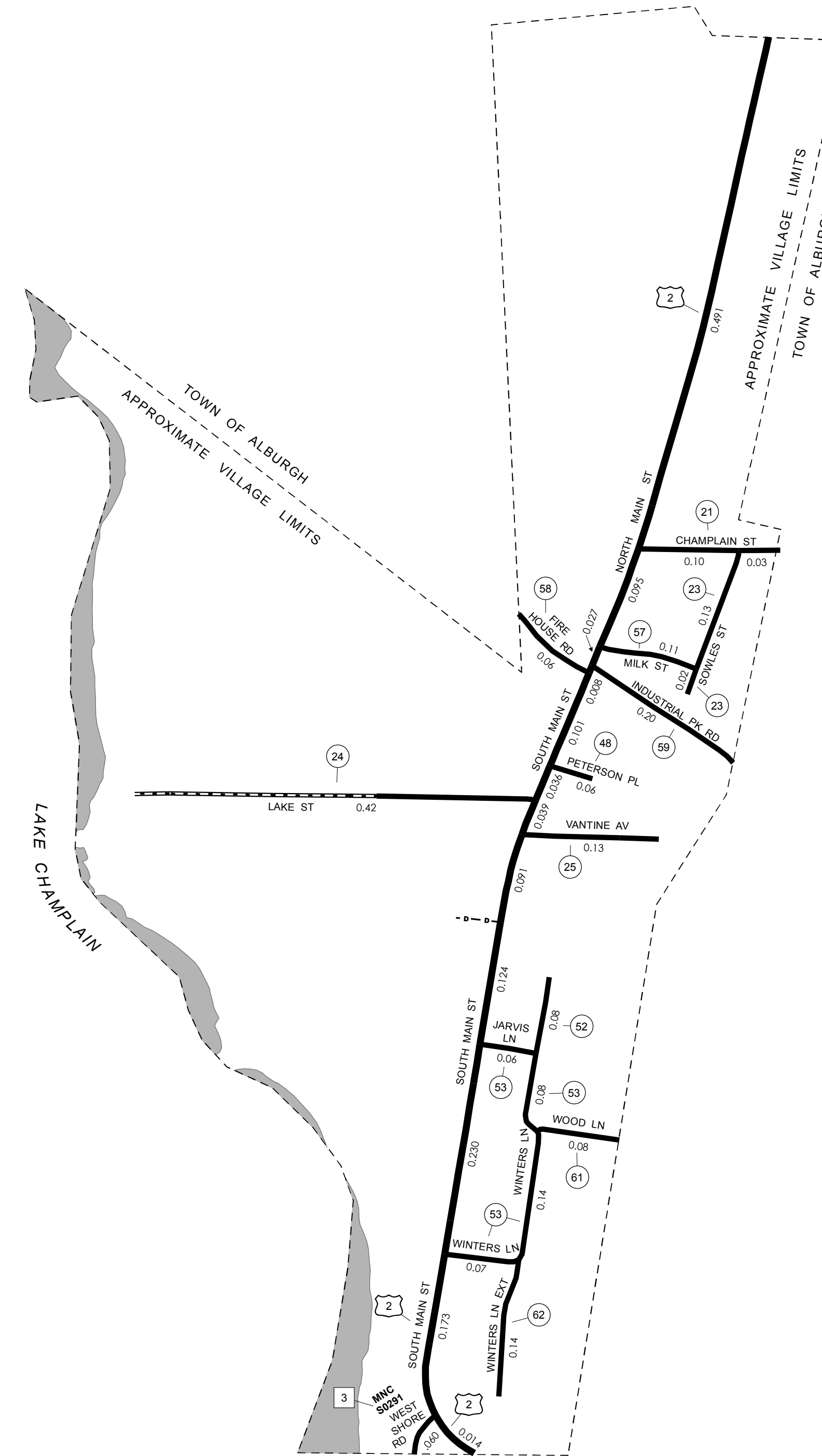
(Excludes Class 4, Legal Trail, and Unidentified Corridor Mileage)

276,000

274,000

436,000

438,000

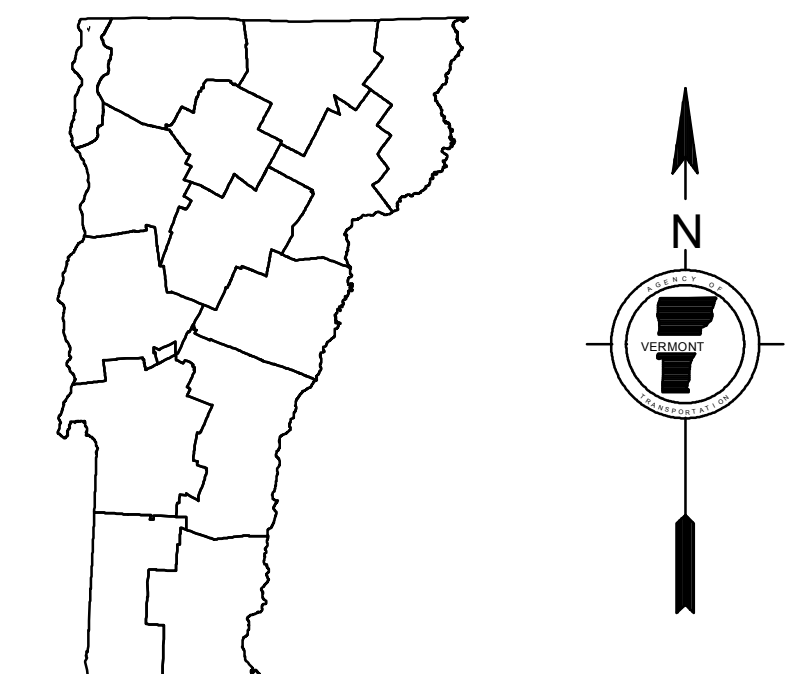


- HIGHWAYS**
- INTERSTATE OR DIVIDED HIGHWAY
 - STATE - HARD SURFACE OR PAVED
 - TOWN - HARD SURFACE OR PAVED
 - GRAVEL
 - SOIL OR GRADED AND DRAINED EARTH
 - UNIMPROVED OR PRIMITIVE
 - IMPASSABLE OR UNTRAVELED
 - LEGAL TRAIL
 - DISCONTINUED
 - HIGHWAY CLASS CHANGE
 - RAILROAD
 - INACTIVE RAILROAD
 - NATIONAL FOREST ROAD
 - STATE FOREST HIGHWAY
 - PARK AND RIDE
- POLITICAL SUBDIVISIONS**
- STATE BOUNDARY
 - COUNTY BOUNDARY
 - TOWN BOUNDARY
 - VILLAGE BOUNDARY
 - URBAN COMPACT BOUNDARY
 - WATER BODY
 - STREAM OR BROOK
- BRIDGE OR CULVERT**
- BRIDGE OR CULVERT > 20'
 - BRIDGE OR CULVERT 6' - 20'
 - VOBICIT BRIDGE
 - VOBICIT CULVERT > 6'
 - STATE BRIDGE OR CULVERT IDENTIFIER
 - TOWN BRIDGE OR CULVERT IDENTIFIER
- PUBLIC LAND - GREEN MOUNTAIN NATIONAL FOREST**
- PUBLIC LAND - STATE/MUNICIPAL
- FEDERAL CLASSIFICATION IDENTIFIER**
- FAU URBAN ARTERIAL OR COLLECTOR
 - MA MINOR ARTERIAL
 - MJC MAJOR COLLECTOR
 - MNC MINOR COLLECTOR
 - PA PRINCIPAL ARTERIAL

DISCLAIMER:
The untraveled highways (laid-out town highways), discontinued highways, and legal trails hereon are those of which the Agency of Transportation has record; others may exist.

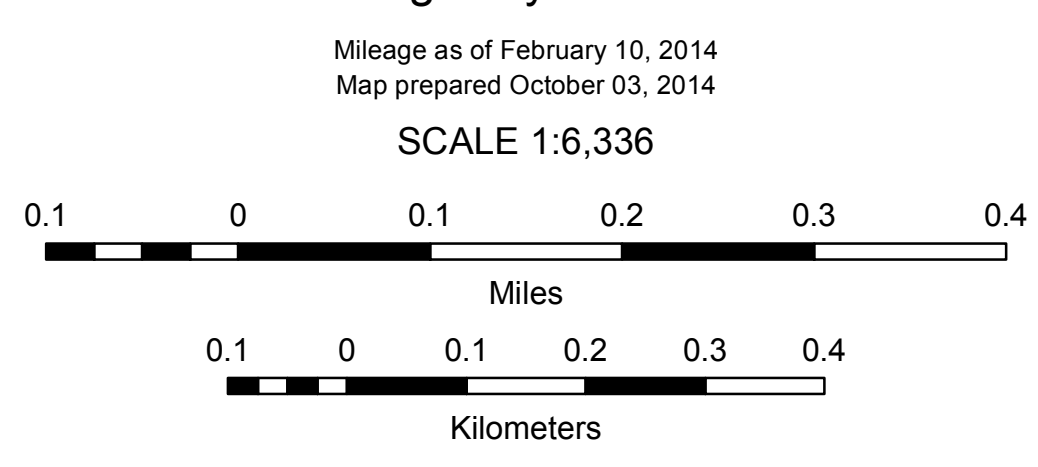
Highway and bridge data by the Agency of Transportation. Town short structures are drawn from the Vermont Online Bridge & Culvert Inventory Tool (VOBCIT) database. All other data from the Vermont Center for Geographic Information. Only named streams are shown.

Vermont State Plane Coordinate System
North American Datum of 1983
SPCS_Zone_Identifier: 4400
Geodetic Reference System 80
2,000-meter grid, Easting - Northing



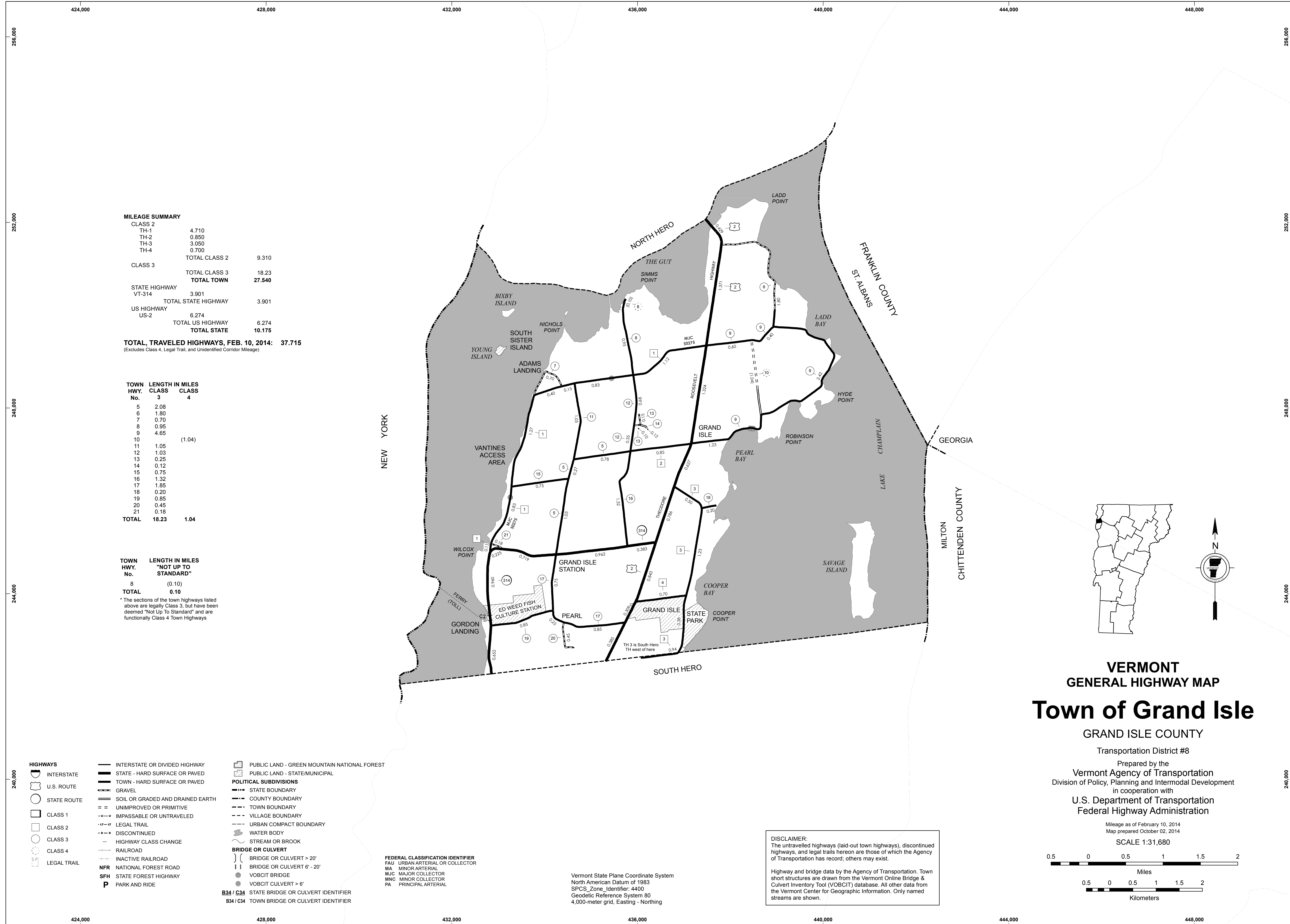
VERMONT
GENERAL HIGHWAY MAP
Village of Alburgh

GRAND ISLE COUNTY
Transportation District #8
Prepared by the
Vermont Agency of Transportation
Division of Policy, Planning and Intermodal Development
in cooperation with
U.S. Department of Transportation
Federal Highway Administration



436,000

438,000



MILEAGE SUMMARY

CLASS 2			
TH-1	4.710		
TH-2	0.850		
TH-3	3.050		
TH-4	0.700		
	TOTAL CLASS 2	9.310	
CLASS 3			
	TOTAL CLASS 3	18.23	
	TOTAL TOWN	27.540	
STATE HIGHWAY			
VT-314	3.901		
	TOTAL STATE HIGHWAY	3.901	
US HIGHWAY			
US-2	6.274		
	TOTAL US HIGHWAY	6.274	
	TOTAL STATE	10.175	

TOTAL, TRAVELED HIGHWAYS, FEB. 10, 2014: 37.715
(Excludes Class 4, Legal Trail, and Unidentified Corridor Mileage)

TOWN HWY. No.	LENGTH IN MILES CLASS 3	CLASS 4
5	2.08	
6	1.80	
7	0.70	
8	0.95	
9	4.65	
10		(1.04)
11	1.05	
12	1.03	
13	0.25	
14	0.12	
15	0.75	
16	1.32	
17	1.85	
18	0.20	
19	0.85	
20	0.45	
21	0.18	
TOTAL	18.23	1.04

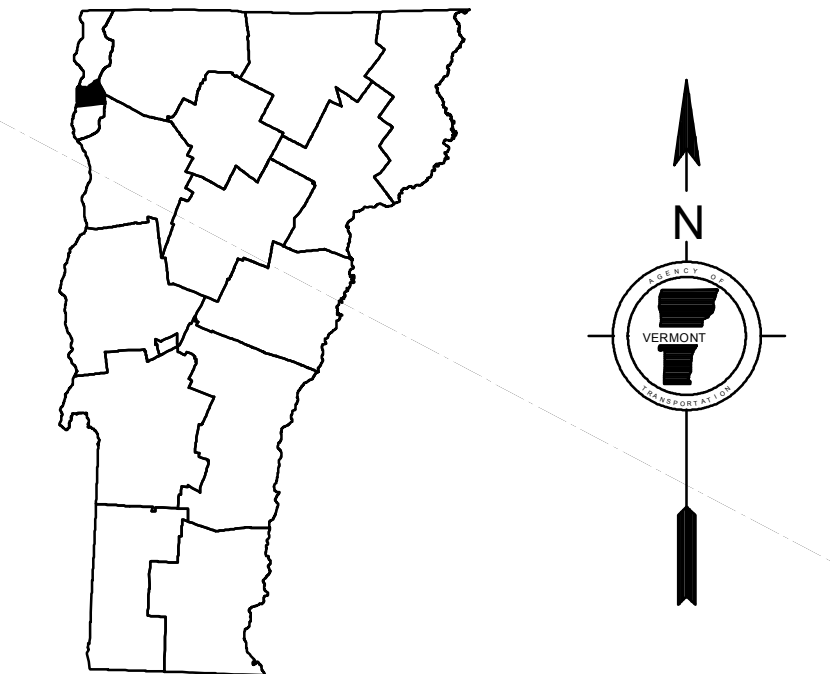
TOWN HWY. No.	LENGTH IN MILES "NOT UP TO STANDARD"
8	(0.10)
TOTAL	0.10

*The sections of the town highways listed above are legally Class 3, but have been deemed "Not Up To Standard" and are functionally Class 4 Town Highways

NEW YORK

GEORGIA

MILTON CHITTENDEN COUNTY



VERMONT
GENERAL HIGHWAY MAP
Town of Grand Isle

GRAND ISLE COUNTY

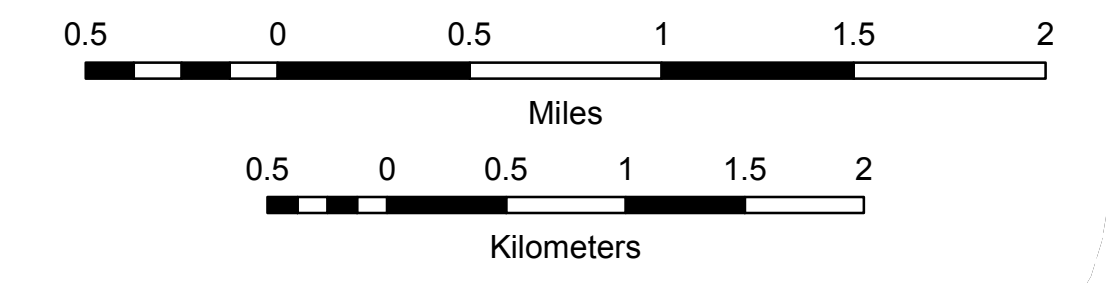
Transportation District #8

Prepared by the
Vermont Agency of Transportation
Division of Policy, Planning and Intermodal Development
in cooperation with

U.S. Department of Transportation
Federal Highway Administration

Mileage as of February 10, 2014
Map prepared October 02, 2014

SCALE 1:31,680

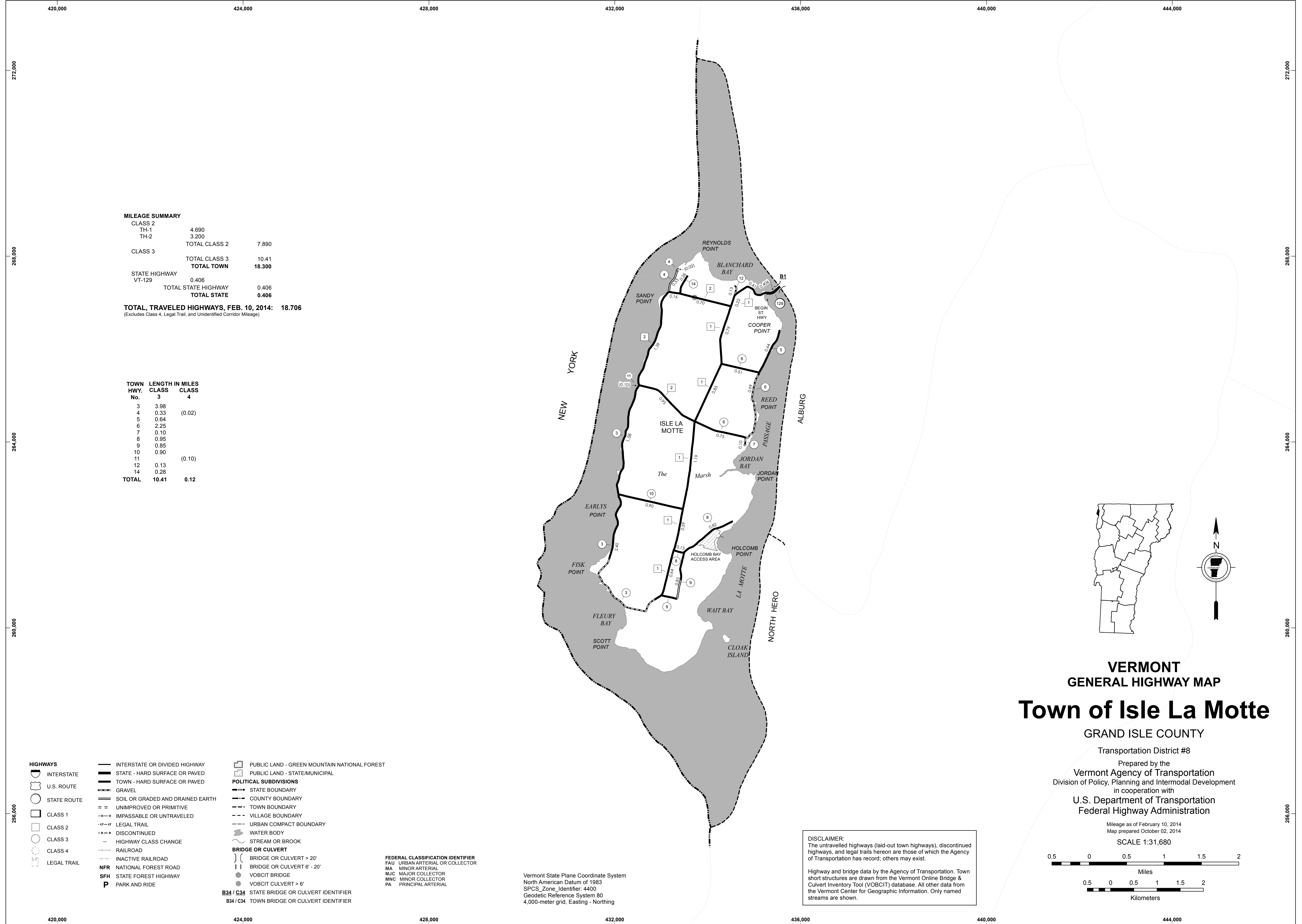


- HIGHWAYS**
- INTERSTATE
 - U.S. ROUTE
 - STATE ROUTE
 - CLASS 1
 - CLASS 2
 - CLASS 3
 - CLASS 4
 - LEGAL TRAIL
- INTERSTATE OR DIVIDED HIGHWAY
STATE - HARD SURFACE OR PAVED
TOWN - HARD SURFACE OR PAVED
GRAVEL
SOIL OR GRADED AND DRAINED EARTH
UNIMPROVED OR PRIMITIVE
IMPASSABLE OR UNTRAVELED
LEGAL TRAIL
DISCONTINUED
HIGHWAY CLASS CHANGE
RAILROAD
INACTIVE RAILROAD
NATIONAL FOREST ROAD
STATE FOREST HIGHWAY
PARK AND RIDE
- POLITICAL SUBDIVISIONS**
- STATE BOUNDARY
 - COUNTY BOUNDARY
 - TOWN BOUNDARY
 - VILLAGE BOUNDARY
 - URBAN COMPACT BOUNDARY
 - WATER BODY
 - STREAM OR BROOK
- BRIDGE OR CULVERT**
- BRIDGE OR CULVERT > 20'
 - BRIDGE OR CULVERT 6' - 20'
 - VOBCIT BRIDGE
 - VOBCIT CULVERT > 6'
- STATE BRIDGE OR CULVERT IDENTIFIER**
B34 / C34 TOWN BRIDGE OR CULVERT IDENTIFIER
- FEDERAL CLASSIFICATION IDENTIFIER**
- FAU - URBAN ARTERIAL OR COLLECTOR
 - MA - MINOR ARTERIAL
 - MJC - MAJOR COLLECTOR
 - MNC - MINOR COLLECTOR
 - PA - PRINCIPAL ARTERIAL
- PUBLIC LAND - GREEN MOUNTAIN NATIONAL FOREST**
PUBLIC LAND - STATE/MUNICIPAL

DISCLAIMER:
The untraveled highways (laid-out town highways), discontinued highways, and legal trails hereon are those of which the Agency of Transportation has record; others may exist.

Highway and bridge data by the Agency of Transportation. Town short structures are drawn from the Vermont Online Bridge & Culvert Inventory Tool (VOBCIT) database. All other data from the Vermont Center for Geographic Information. Only named streams are shown.

Vermont State Plane Coordinate System
North American Datum of 1983
SPCS_Zone_Identifier: 4400
Geodetic Reference System 80
4,000-meter grid, Easting - Northing



MILEAGE SUMMARY

CLASS 2			
TH-1	4.690		
TH-2	3.200		
	TOTAL CLASS 2	7.890	
CLASS 3			
	TOTAL CLASS 3	10.41	
	TOTAL TOWN	18.300	
STATE HIGHWAY			
VT-129	0.406		
	TOTAL STATE HIGHWAY	0.406	
	TOTAL STATE	0.406	

TOTAL, TRAVELED HIGHWAYS, FEB. 10, 2014: 18.706
(Excludes Class 4, Legal Trail, and Unidentified Corridor Mileage)

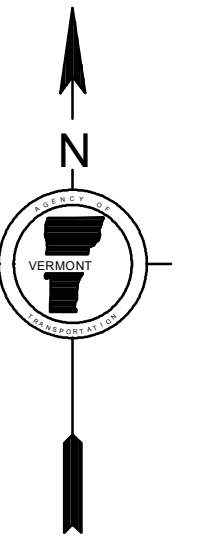
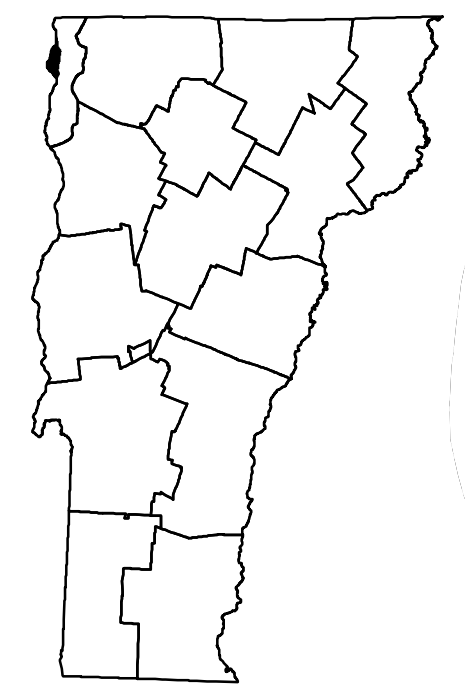
TOWN HWY. No.	LENGTH IN MILES CLASS 3	CLASS 4
3	3.98	
4	0.33	(0.02)
5	0.64	
6	2.25	
7	0.10	
8	0.95	
9	0.85	
10	0.90	
11		(0.10)
12	0.13	
14	0.28	
TOTAL	10.41	0.12

- HIGHWAYS**
- INTERSTATE
 - U.S. ROUTE
 - STATE ROUTE
 - CLASS 1
 - CLASS 2
 - CLASS 3
 - CLASS 4
 - LEGAL TRAIL
 - INTERSTATE OR DIVIDED HIGHWAY
 - STATE - HARD SURFACE OR PAVED
 - TOWN - HARD SURFACE OR PAVED
 - GRAVEL
 - SOIL OR GRADED AND DRAINED EARTH
 - UNIMPROVED OR PRIMITIVE
 - IMPASSABLE OR UNTRAVELED
 - LEGAL TRAIL
 - DISCONTINUED
 - HIGHWAY CLASS CHANGE
 - RAILROAD
 - INACTIVE RAILROAD
 - NATIONAL FOREST ROAD
 - STATE FOREST HIGHWAY
 - PARK AND RIDE
 - PUBLIC LAND - GREEN MOUNTAIN NATIONAL FOREST
 - PUBLIC LAND - STATE/MUNICIPAL
- POLITICAL SUBDIVISIONS**
- STATE BOUNDARY
 - COUNTY BOUNDARY
 - TOWN BOUNDARY
 - VILLAGE BOUNDARY
 - URBAN COMPACT BOUNDARY
 - WATER BODY
 - STREAM OR BROOK
- BRIDGE OR CULVERT**
- BRIDGE OR CULVERT > 20'
 - BRIDGE OR CULVERT 6' - 20'
 - VOBICIT BRIDGE
 - VOBICIT CULVERT > 6'
 - STATE BRIDGE OR CULVERT IDENTIFIER
 - TOWN BRIDGE OR CULVERT IDENTIFIER
- FEDERAL CLASSIFICATION IDENTIFIER**
- FAU - URBAN ARTERIAL OR COLLECTOR
 - MA - MINOR ARTERIAL
 - MJC - MAJOR COLLECTOR
 - MNC - MINOR COLLECTOR
 - PA - PRINCIPAL ARTERIAL

Vermont State Plane Coordinate System
North American Datum of 1983
SPCS_Zone_Identifier: 4400
Geodetic Reference System 80
4,000-meter grid, Easting - Northing

DISCLAIMER:
The untraveled highways (laid-out town highways), discontinued highways, and legal trails hereon are those of which the Agency of Transportation has record; others may exist.

Highway and bridge data by the Agency of Transportation. Town short structures are drawn from the Vermont Online Bridge & Culvert Inventory Tool (VOBCIT) database. All other data from the Vermont Center for Geographic Information. Only named streams are shown.



**VERMONT
GENERAL HIGHWAY MAP
Town of Isle La Motte**

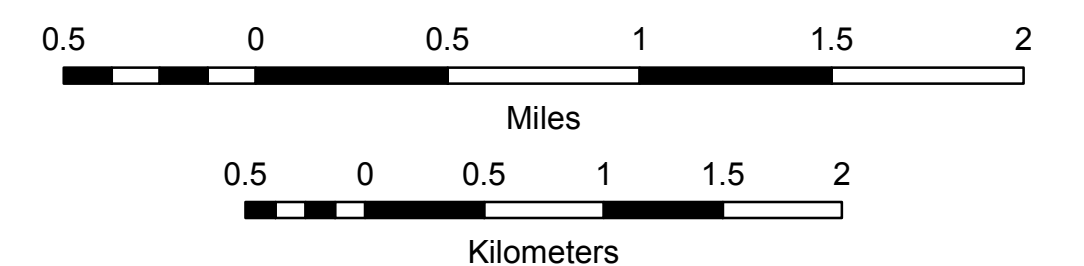
GRAND ISLE COUNTY

Transportation District #8

Prepared by the
Vermont Agency of Transportation
Division of Policy, Planning and Intermodal Development
in cooperation with
U.S. Department of Transportation
Federal Highway Administration

Mileage as of February 10, 2014
Map prepared October 02, 2014

SCALE 1:31,680



MILEAGE SUMMARY

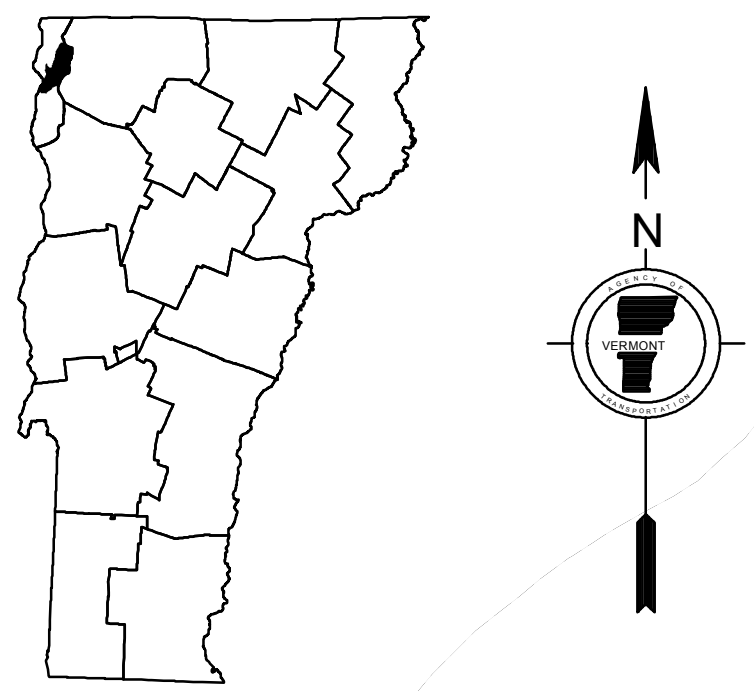
CLASS 2			
TH-1	4.000		
TH-2	3.690		
TH-3	1.740		
	TOTAL CLASS 2	9.430	
CLASS 3			
	TOTAL CLASS 3	8.66	
	TOTAL TOWN	18.090	
US HIGHWAY			
US-2	9.340		
	TOTAL US HIGHWAY	9.340	
	TOTAL STATE	9.340	

TOTAL, TRAVELED HIGHWAYS, FEB. 10, 2014: 27.430
 (Excludes Class 4, Legal Trail, and Undeveloped Corridor Mileage)

TOWN HWY. No.	LENGTH IN MILES	
	CLASS 3	CLASS 4
4	1.04	
5	0.30	(0.10)
6	0.24	
7	1.05	
8	1.91	
9	0.93	
10	0.96	
11	1.10	
12	0.19	
13	0.38	
14	0.22	
15	0.34	
TOTAL	8.66	0.10

HIGHWAYS

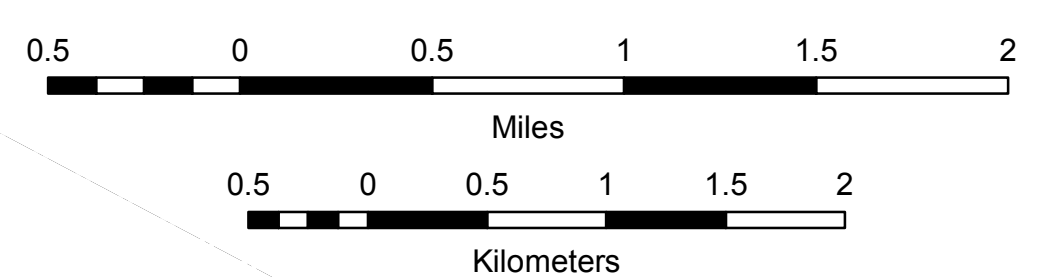
- INTERSTATE
- U.S. ROUTE
- STATE ROUTE
- CLASS 1
- CLASS 2
- CLASS 3
- CLASS 4
- LEGAL TRAIL
- GRAVEL
- SOIL OR GRADED AND DRAINED EARTH
- UNIMPROVED OR PRIMITIVE
- IMPASSABLE OR UNTRAVELED
- LEGAL TRAIL
- DISCONTINUED
- HIGHWAY CLASS CHANGE
- RAILROAD
- INACTIVE RAILROAD
- PUBLIC LAND - GREEN MOUNTAIN NATIONAL FOREST
- PUBLIC LAND - STATE/MUNICIPAL
- POLITICAL SUBDIVISIONS**
- STATE BOUNDARY
- COUNTY BOUNDARY
- TOWN BOUNDARY
- VILLAGE BOUNDARY
- URBAN COMPACT BOUNDARY
- WATER BODY
- STREAM OR BROOK
- BRIDGE OR CULVERT**
- BRIDGE OR CULVERT > 20'
- BRIDGE OR CULVERT 6' - 20'
- VOBCIT BRIDGE
- VOBCIT CULVERT > 6'
- B34 / C34 STATE BRIDGE OR CULVERT IDENTIFIER**
- B34 / C34 TOWN BRIDGE OR CULVERT IDENTIFIER**
- NFR NATIONAL FOREST ROAD**
- SFH STATE FOREST HIGHWAY**
- P PARK AND RIDE**
- FEDERAL CLASSIFICATION IDENTIFIER**
- FAU URBAN ARTERIAL OR COLLECTOR**
- MA MINOR ARTERIAL**
- MJC MAJOR COLLECTOR**
- MNC MINOR COLLECTOR**
- PA PRINCIPAL ARTERIAL**



VERMONT
GENERAL HIGHWAY MAP
Town of North Hero
 GRAND ISLE COUNTY
 Transportation District #8
 Prepared by the
Vermont Agency of Transportation
 Division of Policy, Planning and Intermodal Development
 in cooperation with
U.S. Department of Transportation
Federal Highway Administration

Mileage as of February 10, 2014
 Map prepared October 06, 2014

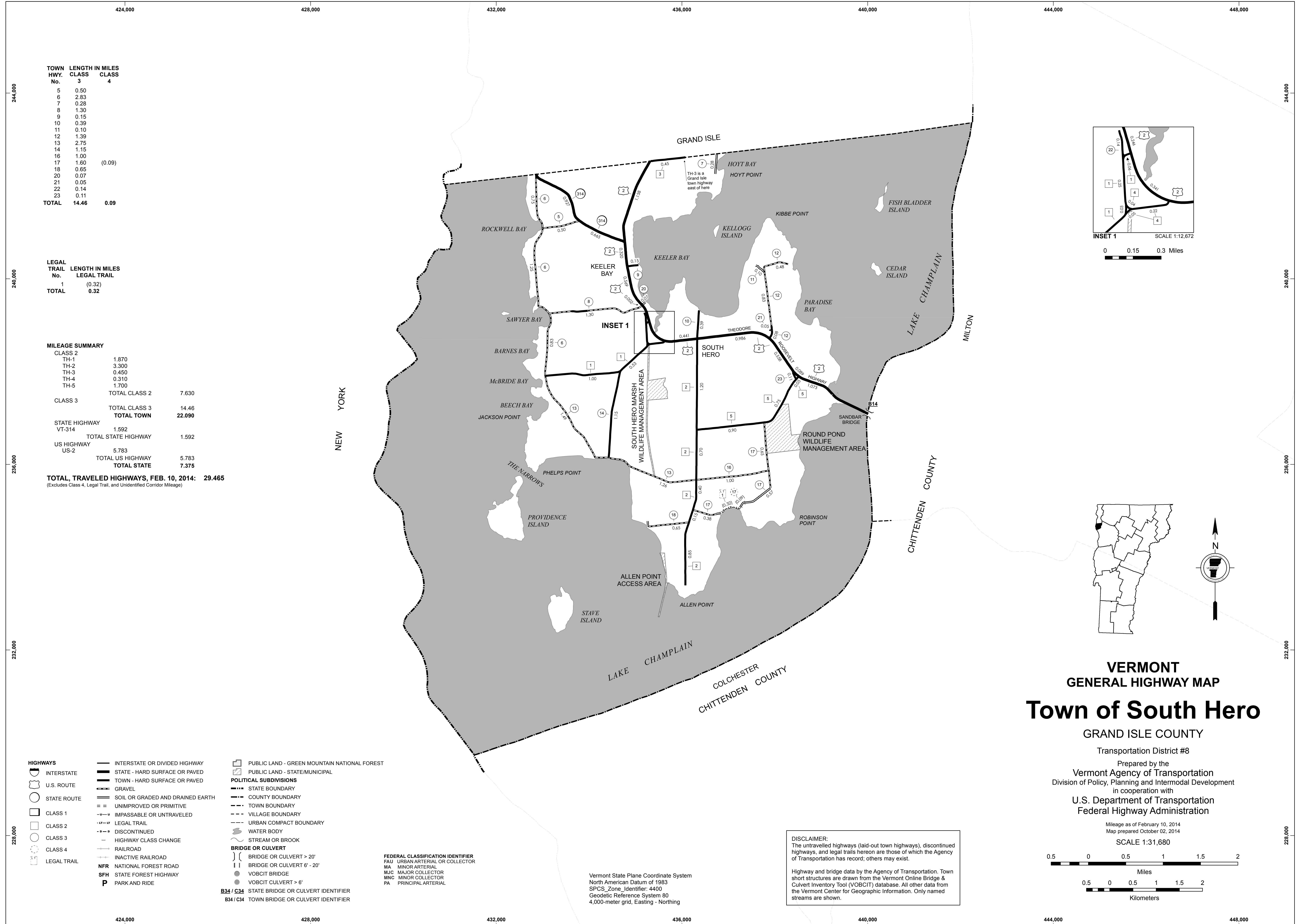
SCALE 1:31,680



DISCLAIMER:
 The untraveled highways (laid-out town highways), discontinued highways, and legal trails hereon are those of which the Agency of Transportation has record; others may exist.

Highway and bridge data by the Agency of Transportation. Town short structures are drawn from the Vermont Online Bridge & Culvert Inventory Tool (VOBCIT) database. All other data from the Vermont Center for Geographic Information. Only named streams are shown.

Vermont State Plane Coordinate System
 North American Datum of 1983
 SPCS_Zone_Identifier: 4400
 Geodetic Reference System 80
 4,000-meter grid, Easting - Northing

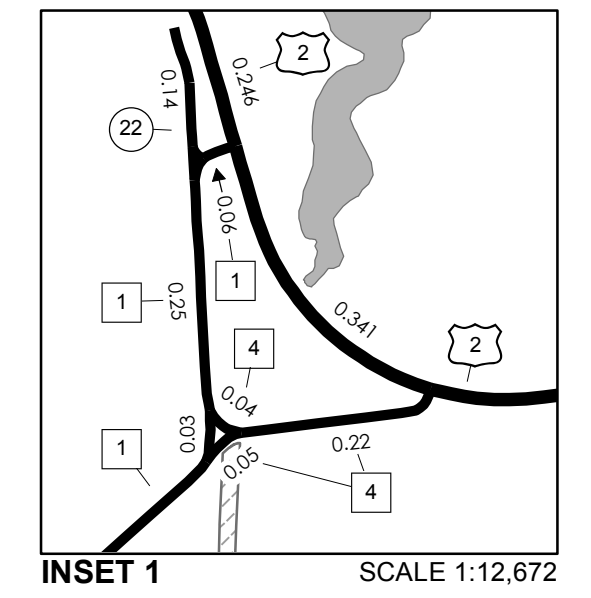


TOWN HWY. No.	LENGTH IN MILES CLASS 3	CLASS 4
5	0.50	
6	2.83	
7	0.28	
8	1.30	
9	0.15	
10	0.39	
11	0.10	
12	1.39	
13	2.75	
14	1.15	
16	1.00	
17	1.60	(0.09)
18	0.65	
20	0.07	
21	0.05	
22	0.14	
23	0.11	
TOTAL	14.46	0.09

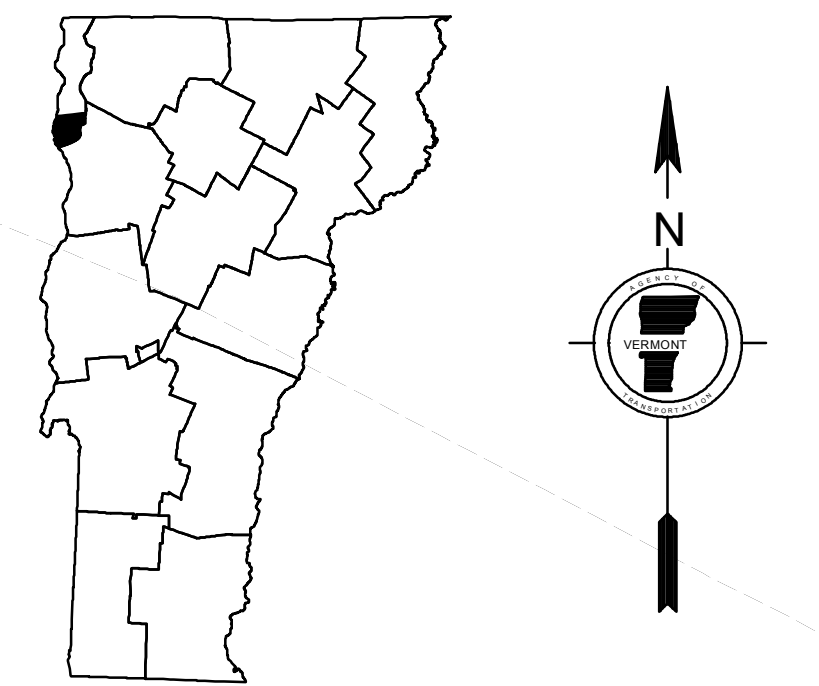
LEGAL TRAIL No.	LENGTH IN MILES LEGAL TRAIL
1	(0.32)
TOTAL	0.32

MILEAGE SUMMARY

CLASS 2		
TH-1	1.870	
TH-2	3.300	
TH-3	0.450	
TH-4	0.310	
TH-5	1.700	
TOTAL CLASS 2	7.630	
TOTAL CLASS 3	14.46	
TOTAL TOWN	22.090	
STATE HIGHWAY		
VT-314	1.592	
TOTAL STATE HIGHWAY	1.592	
US HIGHWAY		
US-2	5.783	
TOTAL US HIGHWAY	5.783	
TOTAL STATE	7.375	
TOTAL, TRAVELED HIGHWAYS, FEB. 10, 2014:	29.465	
<small>(Excludes Class 4, Legal Trail, and Unidentified Corridor Mileage)</small>		



INSET 1 SCALE 1:12,672
0 0.15 0.3 Miles



VERMONT
GENERAL HIGHWAY MAP
Town of South Hero

GRAND ISLE COUNTY

Transportation District #8

Prepared by the
Vermont Agency of Transportation
Division of Policy, Planning and Intermodal Development
in cooperation with
U.S. Department of Transportation
Federal Highway Administration

Mileage as of February 10, 2014
Map prepared October 02, 2014
SCALE 1:31,680



- HIGHWAYS**
- INTERSTATE OR DIVIDED HIGHWAY
 - STATE - HARD SURFACE OR PAVED
 - TOWN - HARD SURFACE OR PAVED
 - GRAVEL
 - SOIL OR GRADED AND DRAINED EARTH
 - UNIMPROVED OR PRIMITIVE
 - IMPASSABLE OR UNTRAVELED
 - LEGAL TRAIL
 - DISCONTINUED
 - HIGHWAY CLASS CHANGE
 - RAILROAD
 - INACTIVE RAILROAD
 - NATIONAL FOREST ROAD
 - STATE FOREST HIGHWAY
 - PARK AND RIDE
- POLITICAL SUBDIVISIONS**
- STATE BOUNDARY
 - COUNTY BOUNDARY
 - TOWN BOUNDARY
 - VILLAGE BOUNDARY
 - URBAN COMPACT BOUNDARY
 - WATER BODY
 - STREAM OR BROOK
- BRIDGE OR CULVERT**
- BRIDGE OR CULVERT > 20'
 - BRIDGE OR CULVERT 6' - 20'
 - VOBCIT BRIDGE
 - VOBCIT CULVERT > 6'
 - STATE BRIDGE OR CULVERT IDENTIFIER
 - TOWN BRIDGE OR CULVERT IDENTIFIER
- PUBLIC LAND - GREEN MOUNTAIN NATIONAL FOREST**
- PUBLIC LAND - STATE/MUNICIPAL
- FEDERAL CLASSIFICATION IDENTIFIER**
- FAU URBAN ARTERIAL OR COLLECTOR
 - MA MINOR ARTERIAL
 - MJC MAJOR COLLECTOR
 - MNC MINOR COLLECTOR
 - PA PRINCIPAL ARTERIAL

DISCLAIMER:
The untraveled highways (laid-out town highways), discontinued highways, and legal trails herein are those of which the Agency of Transportation has record; others may exist.

Highway and bridge data by the Agency of Transportation. Town short structures are drawn from the Vermont Online Bridge & Culvert Inventory Tool (VOBCIT) database. All other data from the Vermont Center for Geographic Information. Only named streams are shown.

Vermont State Plane Coordinate System
North American Datum of 1983
SPCS_Zone_Identifier: 4400
Geodetic Reference System 80
4,000-meter grid, Easting - Northing