

## Road Changes Prompted by 2019 Mileage Certificates

## Vermont Agency of Transportation

VTrans\_notify\_rpt

Contact: Sara Moulton, GIS Professional III, Email: sara.moulton@vermont.gov

Tuesday, June 11, 2019

Report Location: [http://vtransmaps.vermont.gov/Maps/Publications/MileageCertificates/MileageAnnualUpdates/2019\\_StateHwyChanges.pdf](http://vtransmaps.vermont.gov/Maps/Publications/MileageCertificates/MileageAnnualUpdates/2019_StateHwyChanges.pdf)

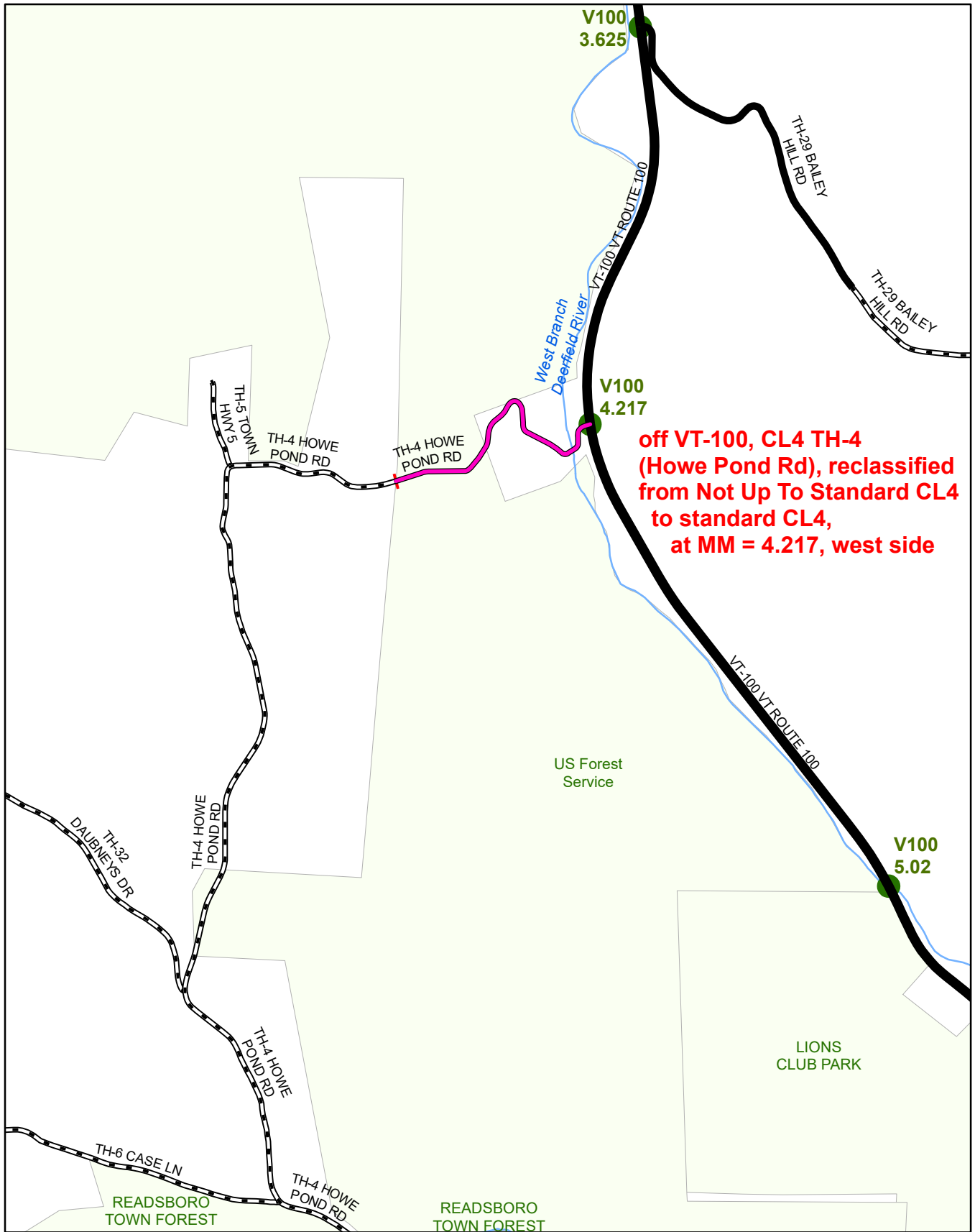
Town Highway Map Webpage: <http://vtrans.vermont.gov/planning/maps/town-maps>

(New "ancient" roads are listed under Reclassified/Remeasured)

<u>County</u>	<u>Town</u>	<u>New Highway Mileage</u>	<u>Reclassified/Remeasured</u>	<u>Discontinued Mileage</u>	<u>VTrans Notes</u>
BENNINGTON	READSBORO		-0.23 mi CL4 TH-4 from 0.63 to 0.40 (remeasurement and reclassification from Not Up To Standard CL4 to standard CL4)  +0.23 mi CL3 TH-4 from 2.79 to 3.02 (remeasurement and reclassification of CL4 TH-4)		Off VT-100, CL4 TH-4 (Howe Pond Rd), reclassified from Not Up To Standard CL4 to standard CL4, at MM = 4.217, west side
FRANKLIN	FRANKLIN		-0.30 mi CL4 TH-33 (no name) from 0.30 to 0.00 (reclassified to Legal Trail) +0.30 mi Legal Trail LT-2 from 0.00 to 0.30 (reclassified from CL4)		Off VT-236: TH-33 reclassified from CL4 to LT-2 at MM = 1.903, west side
ORANGE	RANDOLPH		-0.10 mi CL3 TH-10 (Rainbow Dr) from 0.10 to 0.00 (reclassified to CL4) +0.10 mi CL4 TH-10 (Rainbow Dr) from 0.00 to 0.10 (reclassified from CL3) -0.10 mi CL3 TH-16 (Ferris Dr) from 0.10 to 0.00 (reclassified to LT) +0.10 mi LT LT-2 (Ferris Dr) from 0.62 to 0.72 (reclassified from CL3 TH-16) -0.04 mi CL3 TH-65 (Palmer Rd) from 0.15 to 0.11 (reclassified to LT-9) +0.04 mi LT-9 (Palmer Rd) from 0.00 to 0.04 (reclassified from CL3 TH-65) -0.20 mi CL3 TH-92 (Tilton Rd) from 0.23 to 0.03 (reclassified to LT-10) +0.20 mi LT-10 (Tilton Rd) from 0.00 to 0.10 (reclassified from CL3 TH-92)	-0.12 mi CL3 TH-14 (Donny Smith Dr) from 0.12 to 0.00 (discontinued) -0.07 mi CL3 TH-17 (Managers Rd) from 0.07 to 0.00 (discontinued) -0.17 mi CL3 TH-25 (Hillside Ln) from 0.17 to 0.00 (discontinued) -0.10 mi CL3 TH-32 (Tedford Dr) from 0.10 to 0.00 (discontinued) -0.10 mi CL3 TH-37 (Moxley Dr) from 0.10 to 0.00 (discontinued) -0.03 mi CL3 TH-38 (Osgood Dr) from 0.03 to 0.00 (discontinued) -0.08 mi CL3 TH-39 (Blaisdell Dr) from 0.08 to 0.00 (discontinued) -0.18 mi CL3 TH-55 (Bossie Rd) from 0.18 to 0.00 (discontinued) -0.10 mi CL3 TH-70 (no name) from 0.10 to 0.00 (discontinued) -0.21 mi CL3 TH-83 (Leonard Dr) from 0.21 to 0.00 (discontinued)	Off VT-12: TH-10 (Rainbow Dr) reclassified from CL3 to CL4 at MM = 0.505, west side

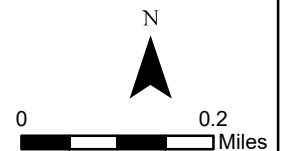
(New "ancient" roads are listed under Reclassified/Remeasured)

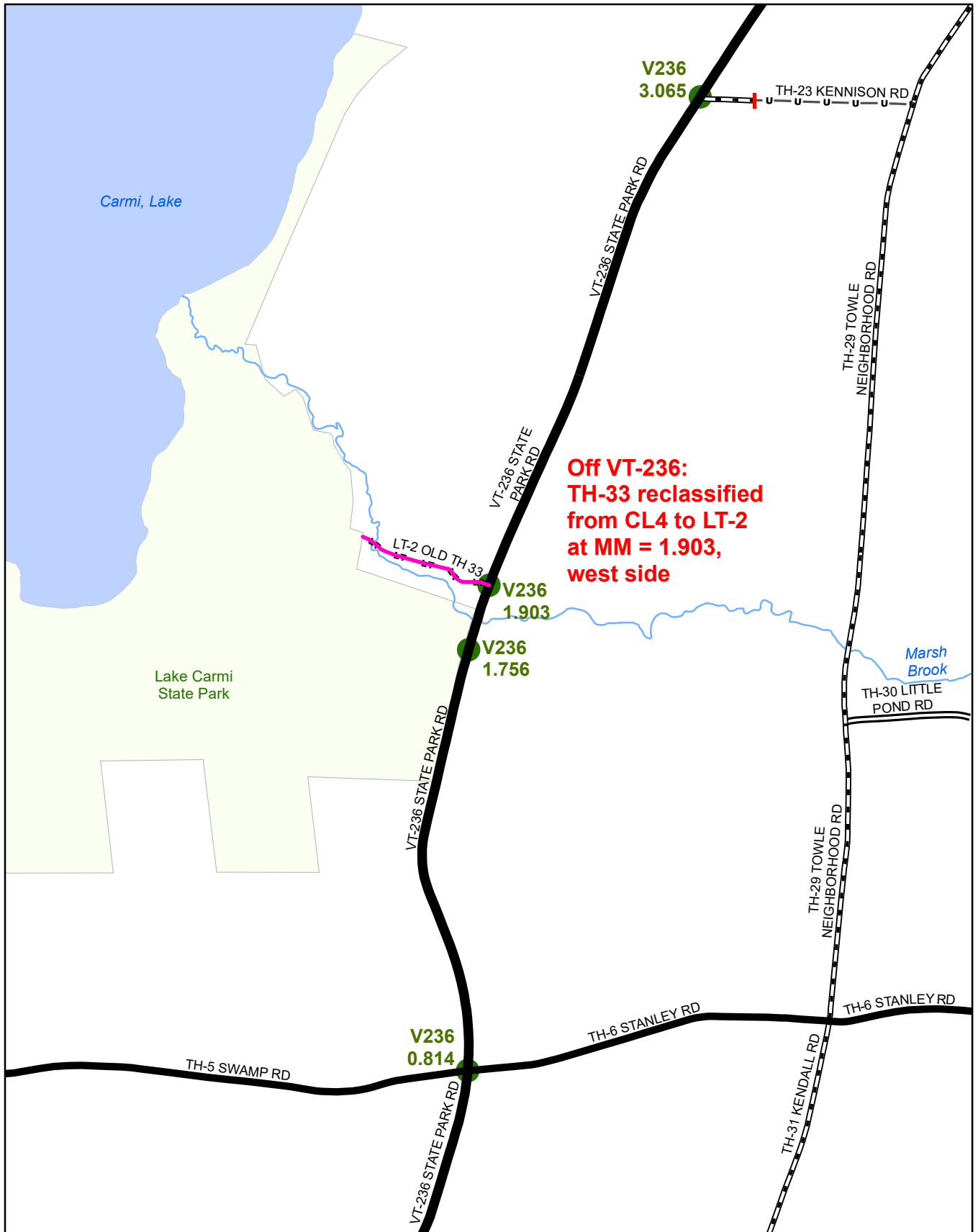
<i>County</i>	<i>Town</i>	<i>New Highway Mileage</i>	<i>Reclassified/Remeasured</i>	<i>Discontinued Mileage</i>	<i>VTrans Notes</i>
WASHINGTON	MIDDLESEX		+0.001 mi State Highway US-2 (from 5.639 mi to 5.640 mi) due to replacement of Bridge B55 -- Project IM 089-2(41) PIN 07A052	-0.19 mi CL3 TH-6 (Nellie Chase Rd) from 1.20 to 1.01 (discontinued) -0.10 mi CL3 TH-11 (Merritt Rd) from 0.10 to 0.00 (discontinued)	Along US-2: mileage adjustment between MM 1.396 to MM 3.890 due to replacement of Bridge B55 -- Project IM 089-2(41) PIN 07A052
			-0.10 mi CL3 TH-4 (Knapp Rd) from 0.13 to 0.03 (reclassified to CL4) +0.10 mi CL4 TH-4 (Knapp Rd) from 0.00 to 0.10 (reclassified from CL3 TH-4)	-0.08 mi CL3 TH-42 (Bolio Rd) from 0.08 to 0.00 (discontinued)	Off VT-12: TH-42 (Bolio Rd) discontinued (was CL3) at MM = 0.381, east side Off VT-12: TH-11 (Merritt Rd) discontinued (was CL3) at MM = 2.234, west side
			-0.20 mi CL3 TH-23 (Warren Rd) from 0.20 to 0.00 (reclassified to CL4) +0.20 mi CL4 TH-23 (Warren Rd) from 0.00 to 0.20 (reclassified from CL3 TH-23)		



**Mileage Certificate Change 2019  
READSBORO**  
(CTUA: 0209-0)

Mapping Section  
Division of Policy, Planning and Intermodal Development  
Vermont Agency of Transportation - February 2019

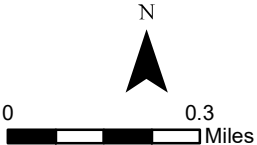


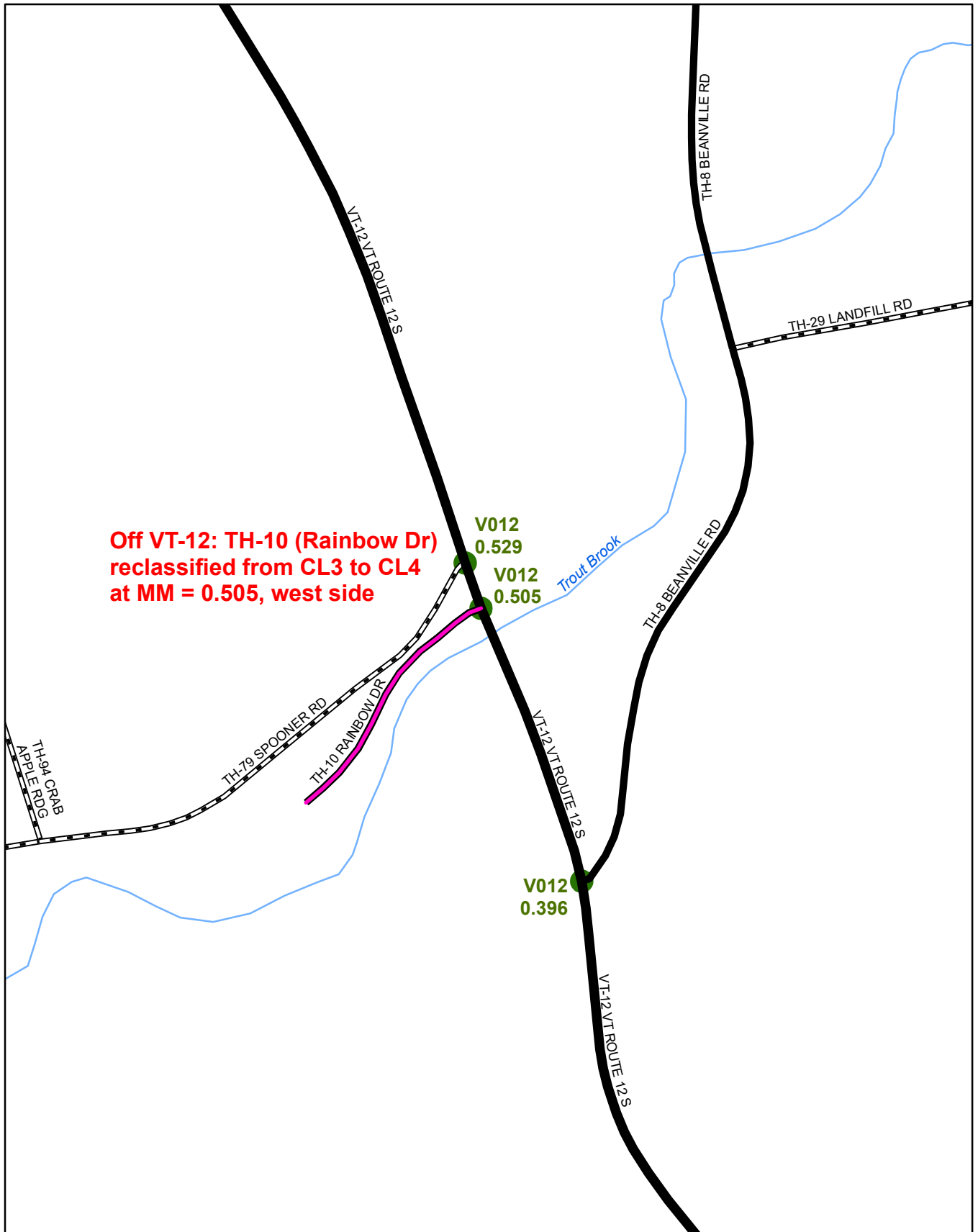


**Off VT-236:  
TH-33 reclassified  
from CL4 to LT-2  
at MM = 1.903,  
west side**

**Mileage Certificate Change 2019**  
**FRANKLIN**  
(CTUA: 0607-0)

Mapping Section  
Division of Policy, Planning and Intermodal Development  
Vermont Agency of Transportation - March 2019





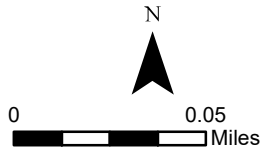
**Off VT-12: TH-10 (Rainbow Dr)  
reclassified from CL3 to CL4  
at MM = 0.505, west side**

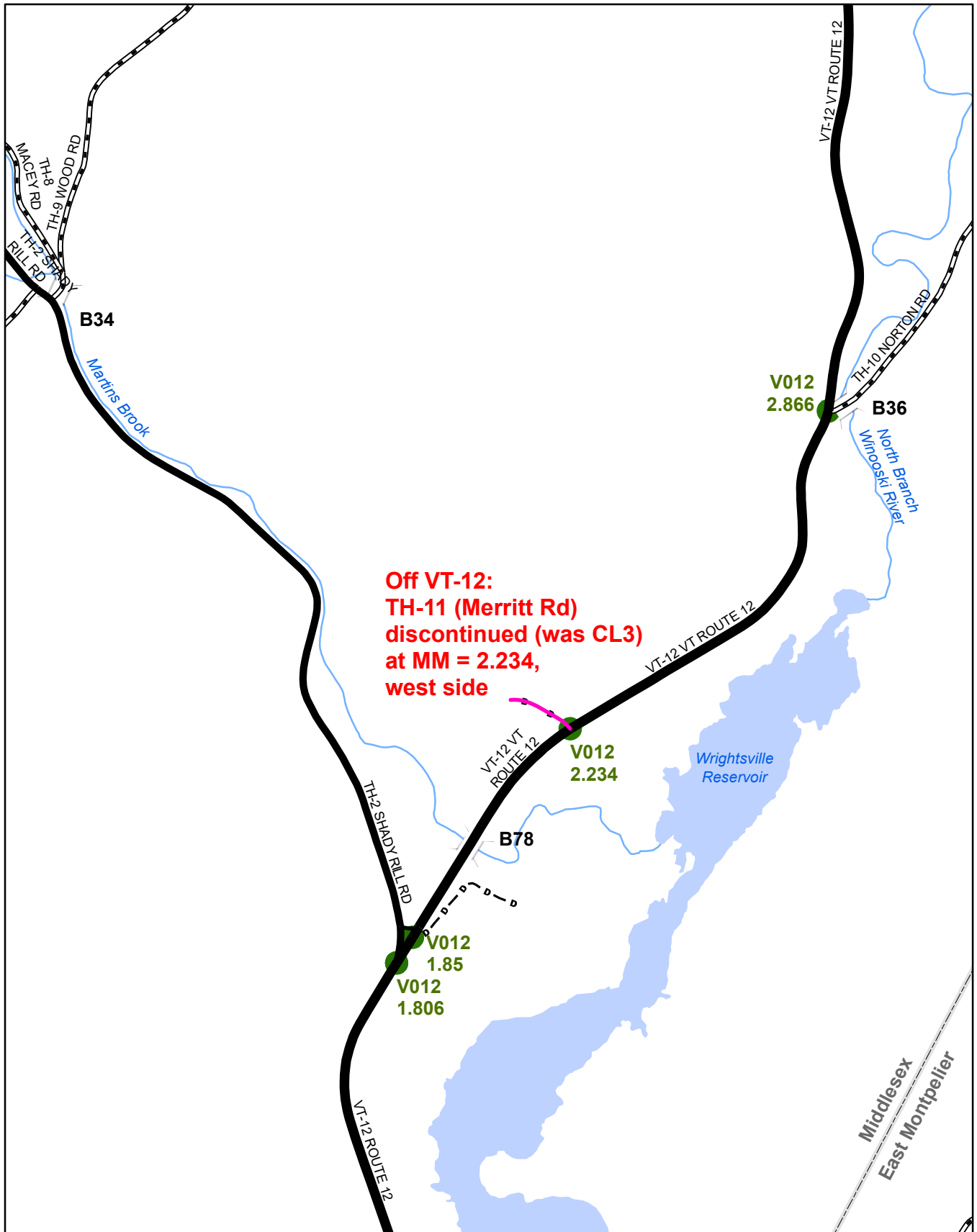
V012  
0.529  
V012  
0.505

V012  
0.396

**Mileage Certificate Change 2019  
RANDOLPH**  
(CTUA: 0909-0)

Mapping Section  
Division of Policy, Planning and Intermodal Development  
Vermont Agency of Transportation - March 2019



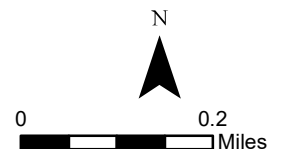


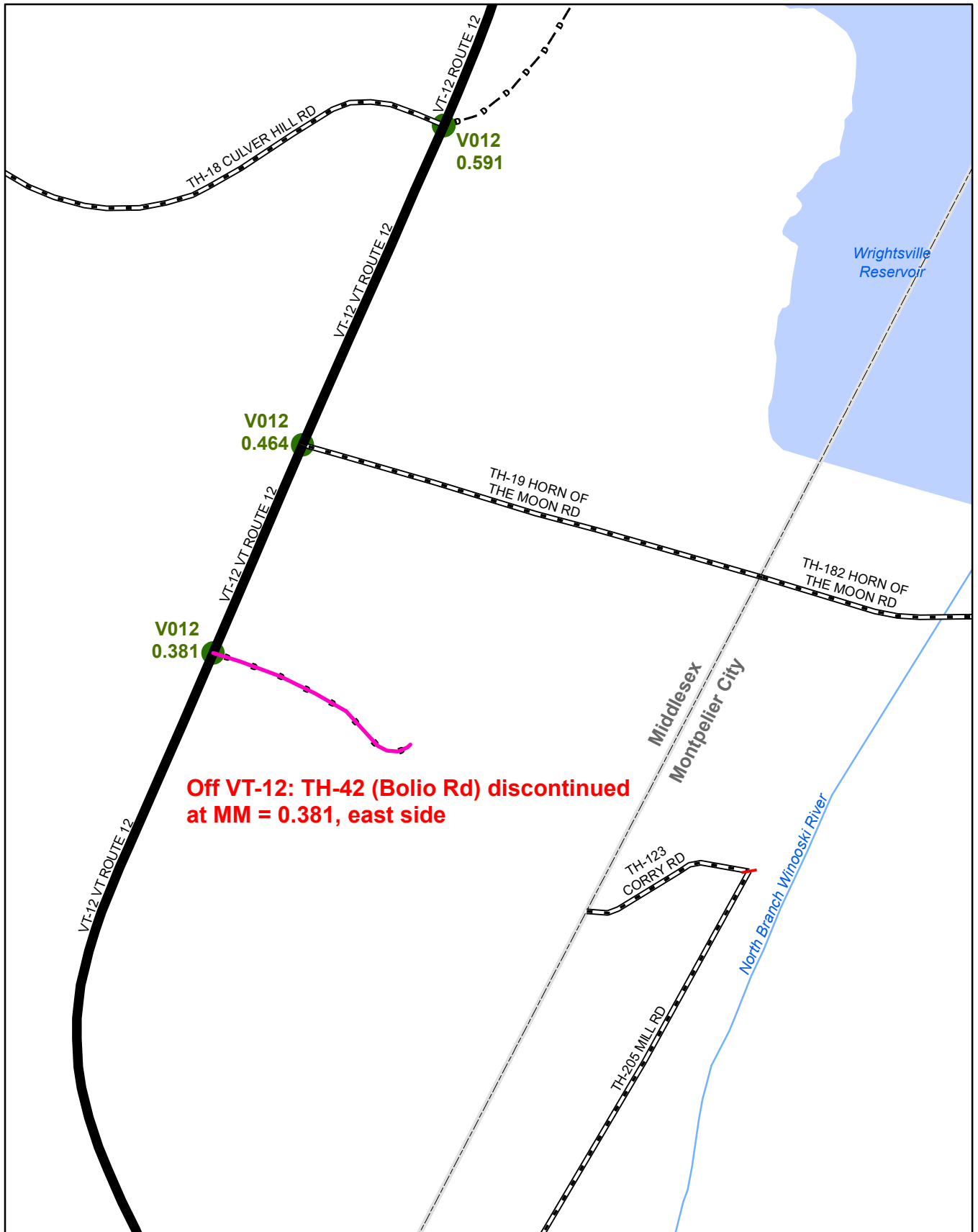
### Mileage Certificate Change 2019

#### MIDDLESEX

(CTUA: 1210-0)

Mapping Section  
 Division of Policy, Planning and Intermodal Development  
 Vermont Agency of Transportation - March 2019

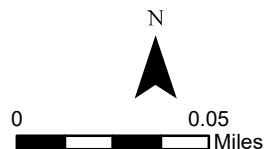


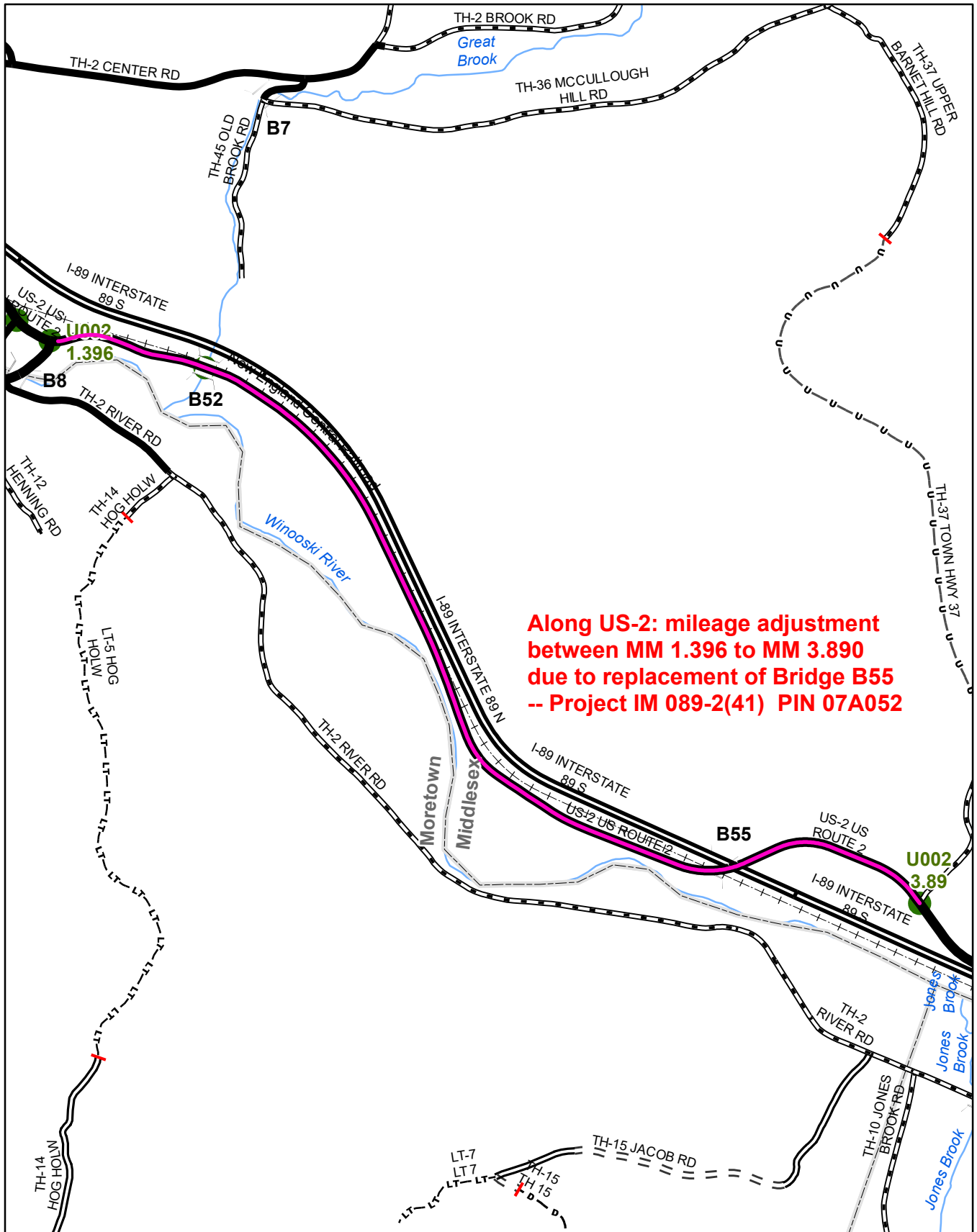


**Off VT-12: TH-42 (Bolio Rd) discontinued at MM = 0.381, east side**

**Mileage Certificate Change 2019**  
**MIDDLESEX**  
 (CTUA: 1210-0)

Mapping Section  
 Division of Policy, Planning and Intermodal Development  
 Vermont Agency of Transportation - March 2019





**Along US-2: mileage adjustment  
between MM 1.396 to MM 3.890  
due to replacement of Bridge B55  
-- Project IM 089-2(41) PIN 07A052**

**Mileage Certificate Change 2019  
MIDDLESEX**  
(CTUA: 1210-0)

Mapping Section  
Division of Policy, Planning and Intermodal Development  
Vermont Agency of Transportation - March 2019

