

Vermont Agency of Transportation Road Changes Prompted by 2008 Mileage Certificates

VTrans_notify_rpt

Tuesday, April 01, 2008

Contact: Sara Moulton, Mapping and GIS Specialist, Tel: 802-828-2109 Email: sara.moulton@state.vt.us

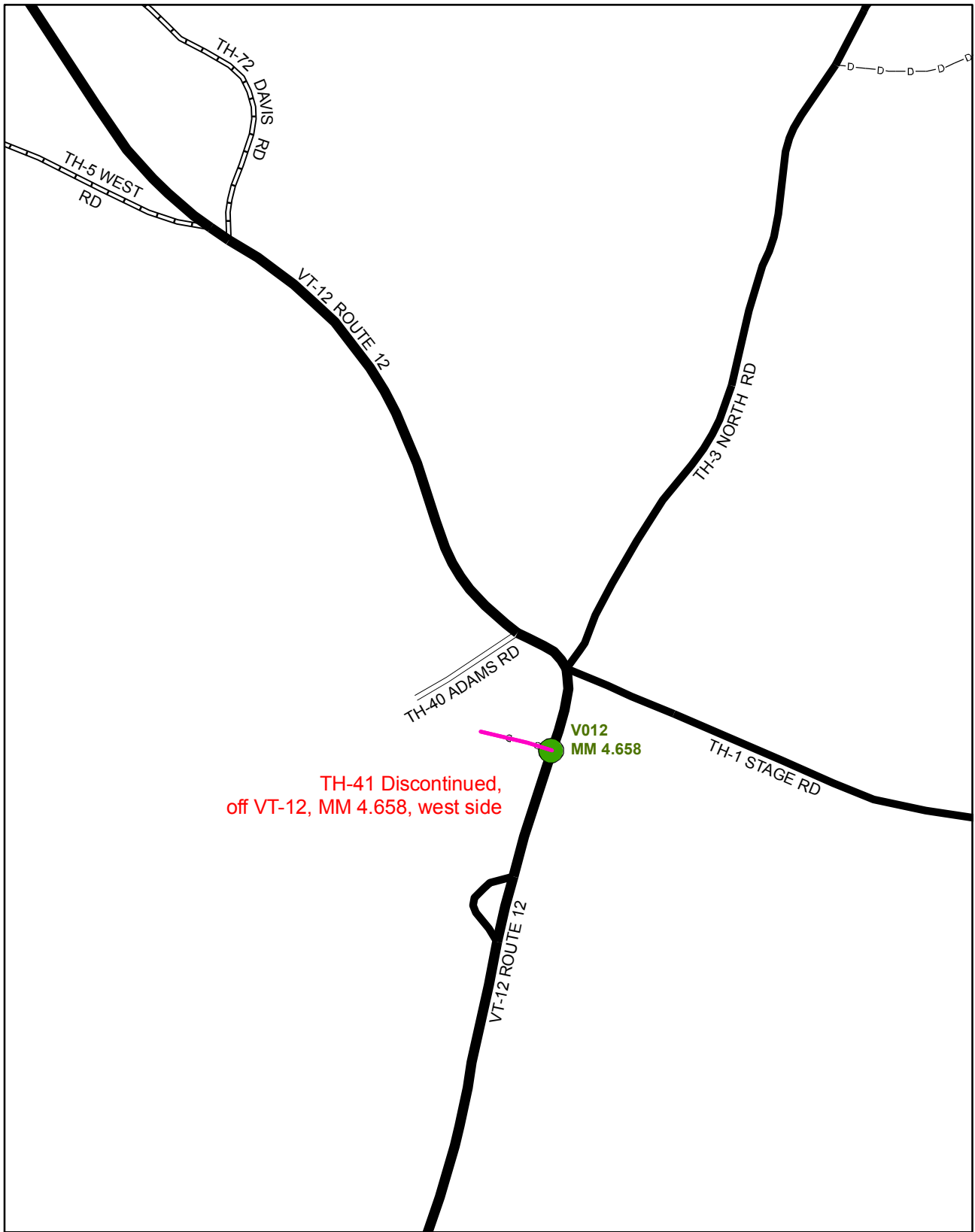
Report Location: http://www.aot.state.vt.us/planning/documents/HighResearch/Publications/2008_StateHwyChanges.pdf
 Town Highway Map Webpage: http://www.aot.state.vt.us/Planning/MapGIS/Town_Maps1.htm

County	Town	New Highway Mileage	Discontinued Mileage	Reclassified/Remeasured	VTrans Notes
BENNINGTON	POWNAL	0.08 mi TH-72 CL3 Pit Rd 0.28 mi TH-73 CL3 West Meadow Ct 0.24 mi TH-74 CL3 East Ct 0.32 mi TH-75 CL3 Transfer Station Rd 0.11 mi TH-76 CL3 Wood Rd 0.54 mi TH-77 CL3 Lovett Cemetery Rd 0.10 mi LT-1 new Legal Trail Wood Rd			CL4, TH-77, off US-7, MM 0.749, west side
BENNINGTON	SEARSBURG			0.45 mi State Highway VT-9 ramp reclassified to TH-8 CL3 (Lind Ln)	CL3, TH-8, off VT-9, MM 4.471, north side (Was formerly a portion of VT-9. It became temporarily classified as a ramp after the 2004 realignment of VT-9.)
CHITTENDEN	SO. BURLINGTON	0.09 mi TH-227 CL3 Juniper Dr 0.01 mi TH-204 CL3 Arbor Rd 0.58 mi TH-228 CL3 Market St			CL3, TH-228, off VT-116, MM 4.008, west side
CHITTENDEN	WILLISTON	0.10 mi TH-118 CL3 Zephyr Rd			CL3, TH-118, off VT-2A, MM 3.986, east side
FRANKLIN	ST. ALBANS TOWN	0.27 mi TH-95 CL3 Eastview Dr 0.10 mi TH-96 CL3 Franklin Park W	0.13 mi TH-32 Discontinued (Highgate Rd, was CL4) 0.15 mi TH-51 Discontinued (was CL3)		Discontinued, was TH-51, off US-7, MM 1.774, east side CL3, TH-96, off US-7, MM 1.958, east side
LAMOILLE	MORRISTOWN	0.53 mi CL3 Jersey Wy 0.31 mi CL3 Foss St 0.41 mi TH-120 CL3 Beacon Hill			CL3 Jersey Wy, off VT-100, MM 4.814, south side

<i>County</i>	<i>Town</i>	<i>New Highway Mileage</i>	<i>Discontinued Mileage</i>	<i>Reclassified/Remeasured</i>	<i>VTrans Notes</i>
ORANGE	RANDOLPH		0.92 mi L T-4 Discontinued (was Legal Trail, was TH46 CL4 prior to 1987)	Legal Trail mileage approved by Selectboard LT-1 0.97 mi LT-2 0.82 mi LT-3 0.05 mi LT-5 0.40 mi LT-6 1.42 mi	LT-5, off VT-12, MM 4.734, east side LT-6, off VT-66, MM 4.930 and MM 6.553, south side
ORANGE	WILLIAMSTOWN	0.19 mi TH-104 CL3 Soucy Ln		TH-69 CL3 (Lathrop Ct) remeasured from 0.10 mi to 0.07 mi (-0.03 mi) 0.42 mi Legal Trail (LT-3) to TH-47 CL4 (Ferno Rd) Total 3.13 mi Legal Trail mileage approved by Selectboard LT-1 0.72 mi LT-2 0.87 mi LT-4 0.85 mi LT-5 0.69 mi	CL3 TH-104, off VT-14, MM 5.320, west side
WINDHAM	DUMMERSTON	0.83 mi TH-67 CL3 Hopkins Rd 0.33 mi TH-78 CL3 Sugar House Rd		0.08 mi TH-67 reclassified from CL4 to CL3 Total 0.54 mi Legal Trail mileage approved by Selectboard LT-1 0.29 mi LT-2 0.25 mi	CL3, TH-78, off VT-30, MM 3.780, west side
WINDSOR	BARNARD		0.05 mi TH-41 Discontinued (Lili Ln, was CL3)		TH-41 Discontinued, off VT-12, MM 4.658, west side

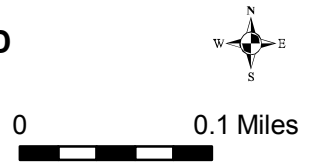
<i>County</i>	<i>Town</i>	<i>New Highway Mileage</i>	<i>Discontinued Mileage</i>	<i>Reclassified/Remeasured</i>	<i>VTrans Notes</i>
WINDSOR	BETHEL	0.83 mi TH-28 CL4			CL4, TH-118, off VT-12, MM 1.303, west side
		0.21 mi TH-108 CL4			CL4, TH-112, off VT-12, MM 3.508,
		0.21 mi TH-109 CL4			west side
		0.10 mi TH-110 CL4			CL4, TH-115, off VT-12, MM 6.247
		0.03 mi TH-111 CL4			and MM 6.348, west side
		0.16 mi TH-112 CL4			
		0.12 mi TH-113 CL4			
		0.22 mi TH-114 CL4			
		0.14 mi TH-115 CL4			CL4, TH-114, off VT-14, MM 0.327, east side
		0.48 mi TH-116 CL4			
		0.12 mi TH-118 CL4			CL4, TH-118, off VT-107, MM 1.416, south side
		0.20 mi TH-119 CL4			CL4, TH-110, off VT-107, MM 1.536, north side
		0.46 mi TH-120 CL4			CL4, TH-111, off VT-107, MM 1.743, north side
		0.28 mi TH-121 CL4			CL4, TH-108, off VT-107, MM 3.327, east side
		0.58 mi TH-122 CL4			
		0.60 mi TH-123 CL4			
		0.90 mi TH-124 CL4			
		0.33 mi TH-125 CL4			
		0.33 mi TH-126 CL4			

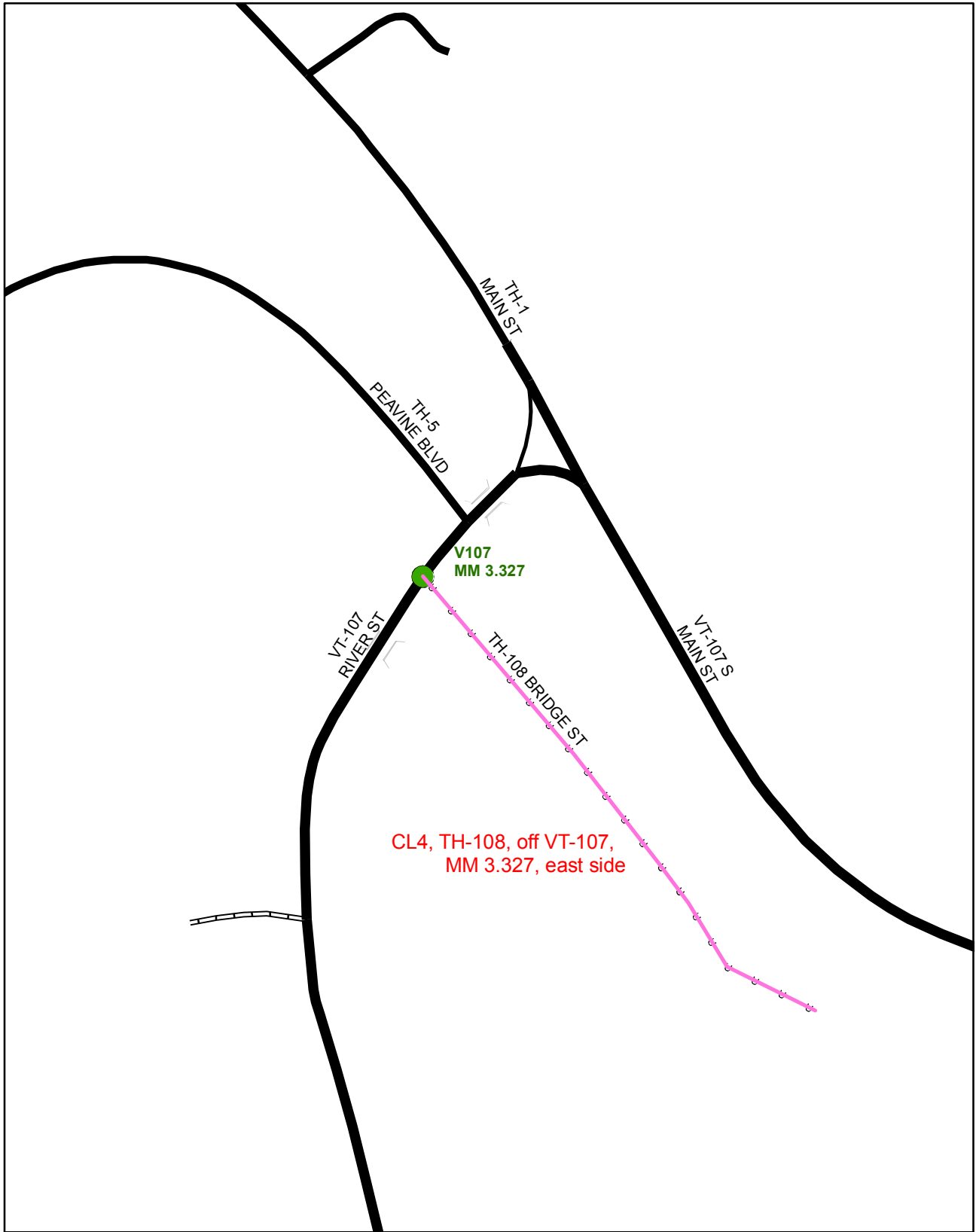
WINDSOR	HARTLAND			Class 2 Transfer - CL3 TH-5 (1.70 mi) and CL3 TH-28 (0.84) to CL2 TH-5 (2.54 mi)	
					CL2, TH-5, off VT-12, MM 4.545, west side



Mileage Certificate Change 2008 -- BARNARD

Mapping Unit
Policy & Planning Division
Vermont Agency of Transportation -- February 2008



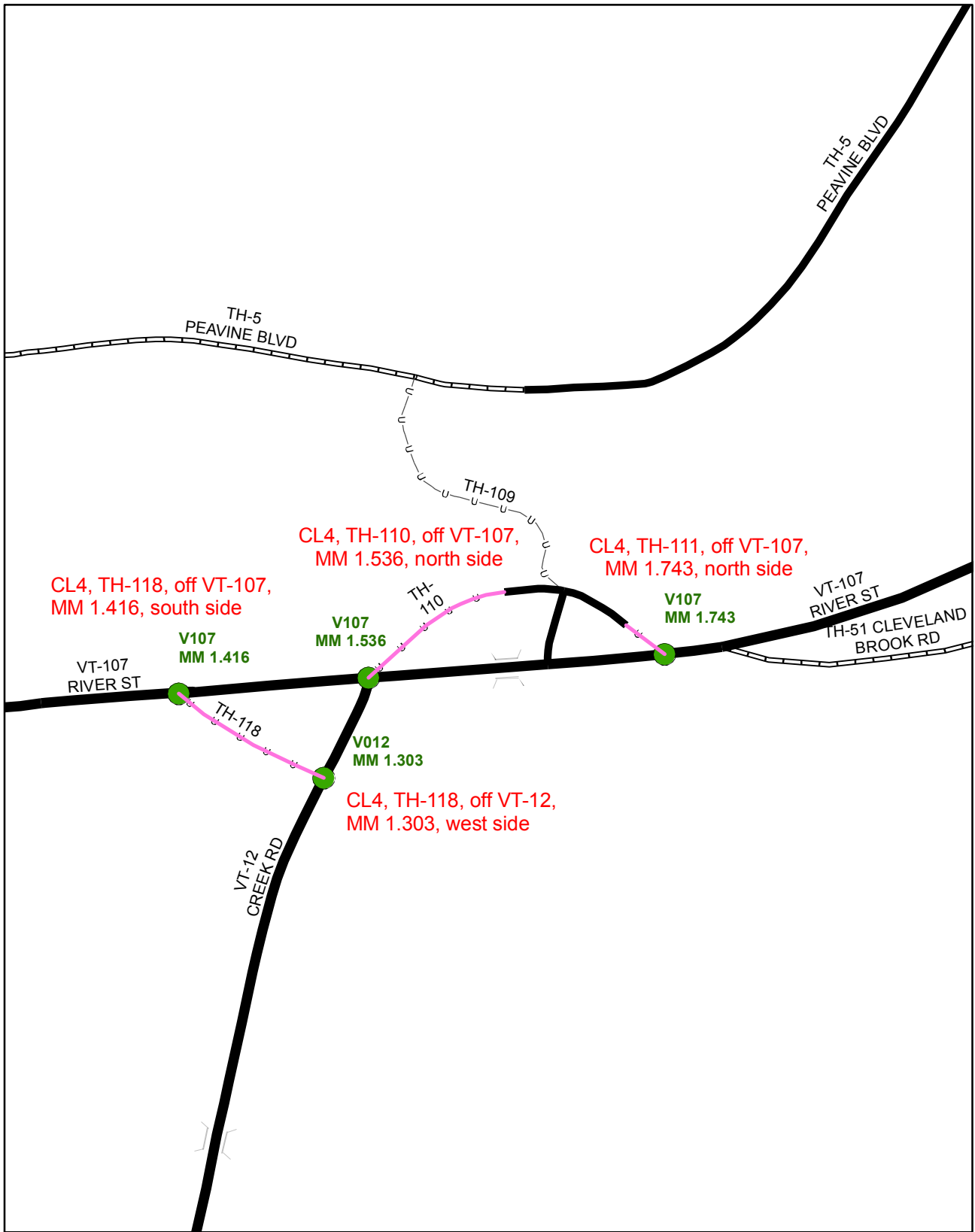


Mileage Certificate Change 2008 -- BETHEL

Mapping Unit
Policy & Planning Division
Vermont Agency of Transportation -- March 2008

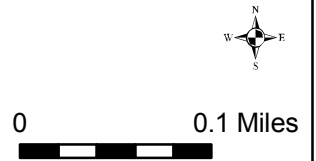


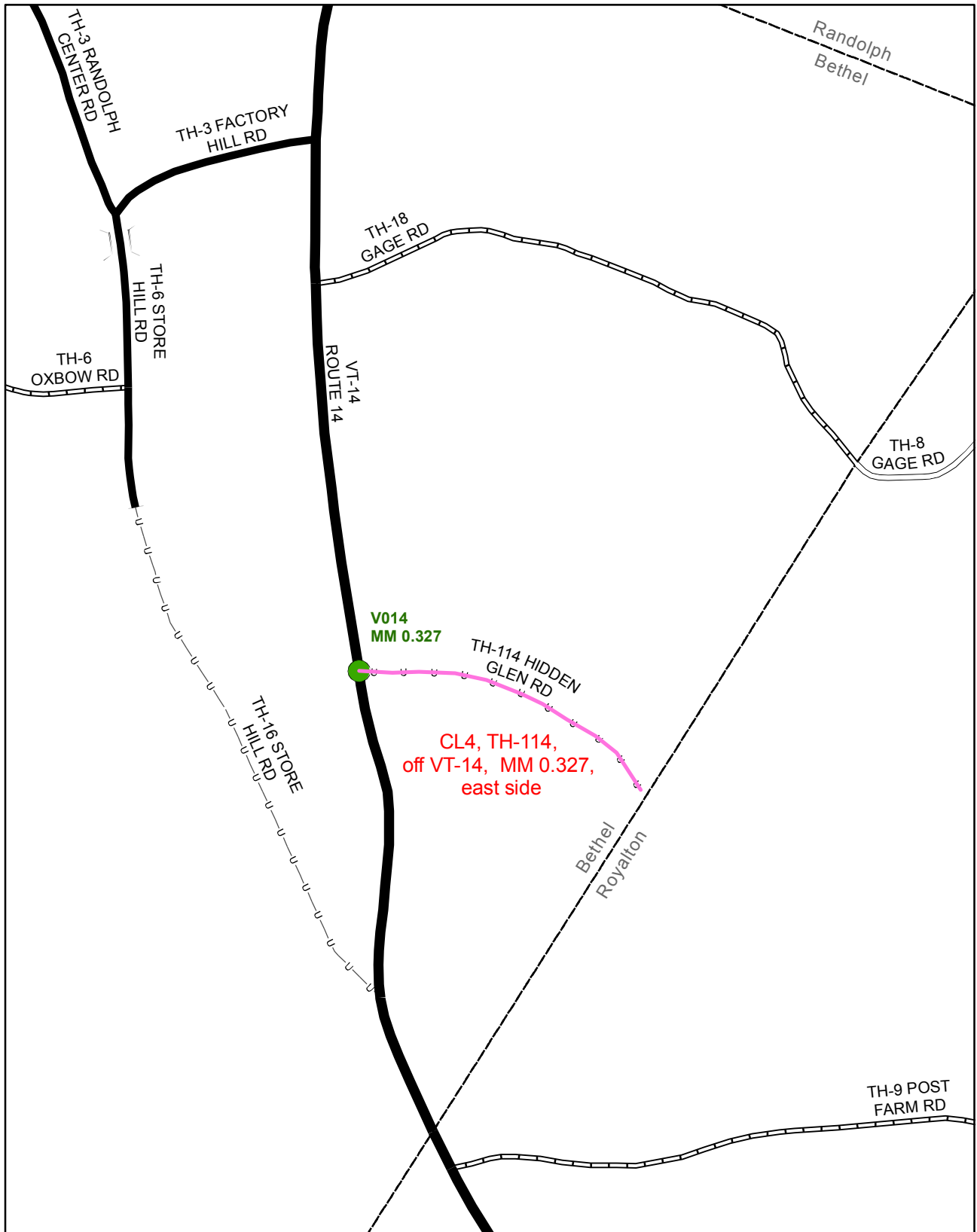
0 0.05 Miles



Mileage Certificate Change 2008 -- BETHEL

Mapping Unit
 Policy & Planning Division
 Vermont Agency of Transportation -- March 2008



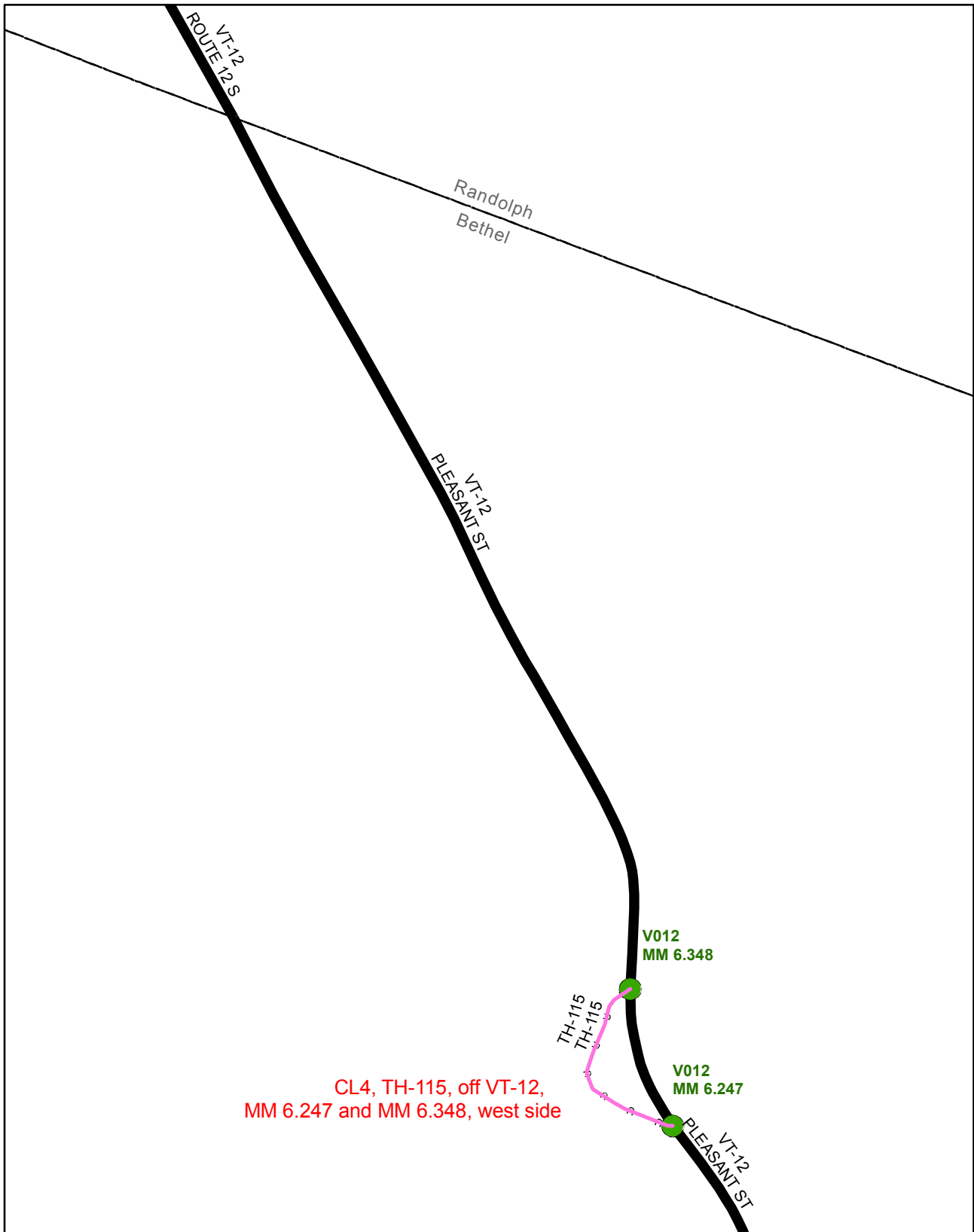


Mileage Certificate Change 2008 -- BETHEL

Mapping Unit
 Policy & Planning Division
 Vermont Agency of Transportation -- March 2008



0 0.1 Miles

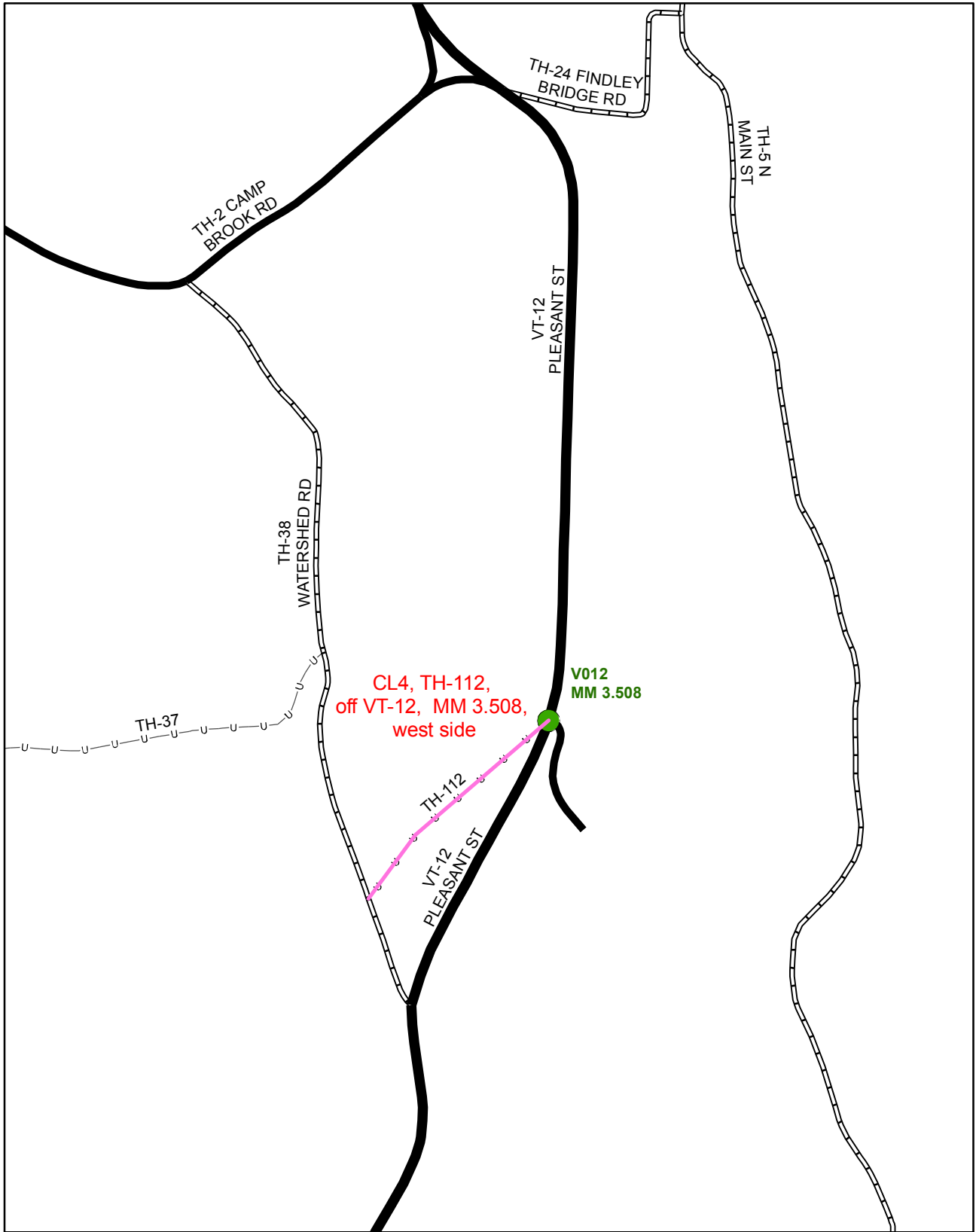


Mileage Certificate Change 2008 -- BETHEL



Mapping Unit
 Policy & Planning Division
 Vermont Agency of Transportation -- March 2008

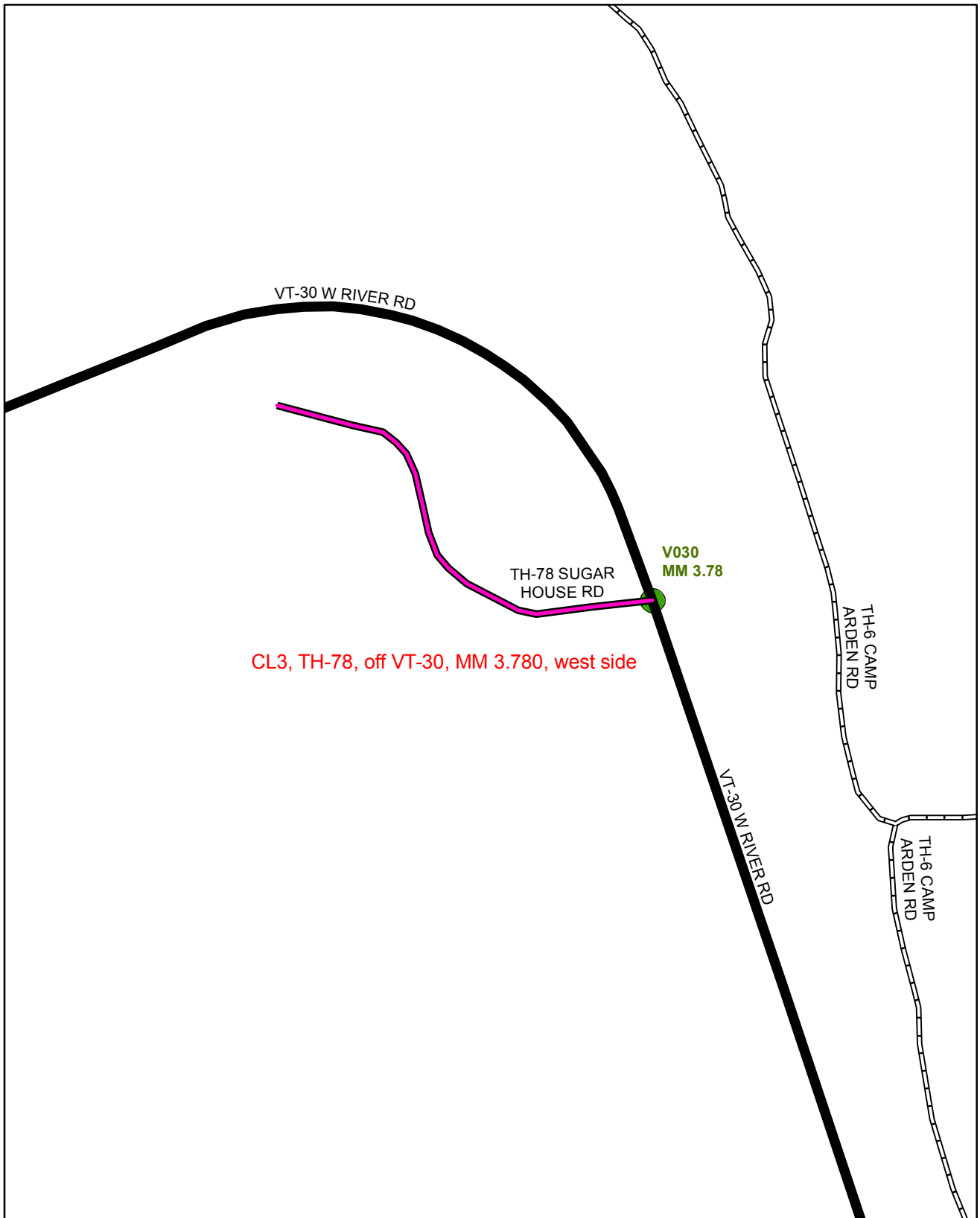




Mileage Certificate Change 2008 -- BETHEL

Mapping Unit
 Policy & Planning Division
 Vermont Agency of Transportation -- March 2008





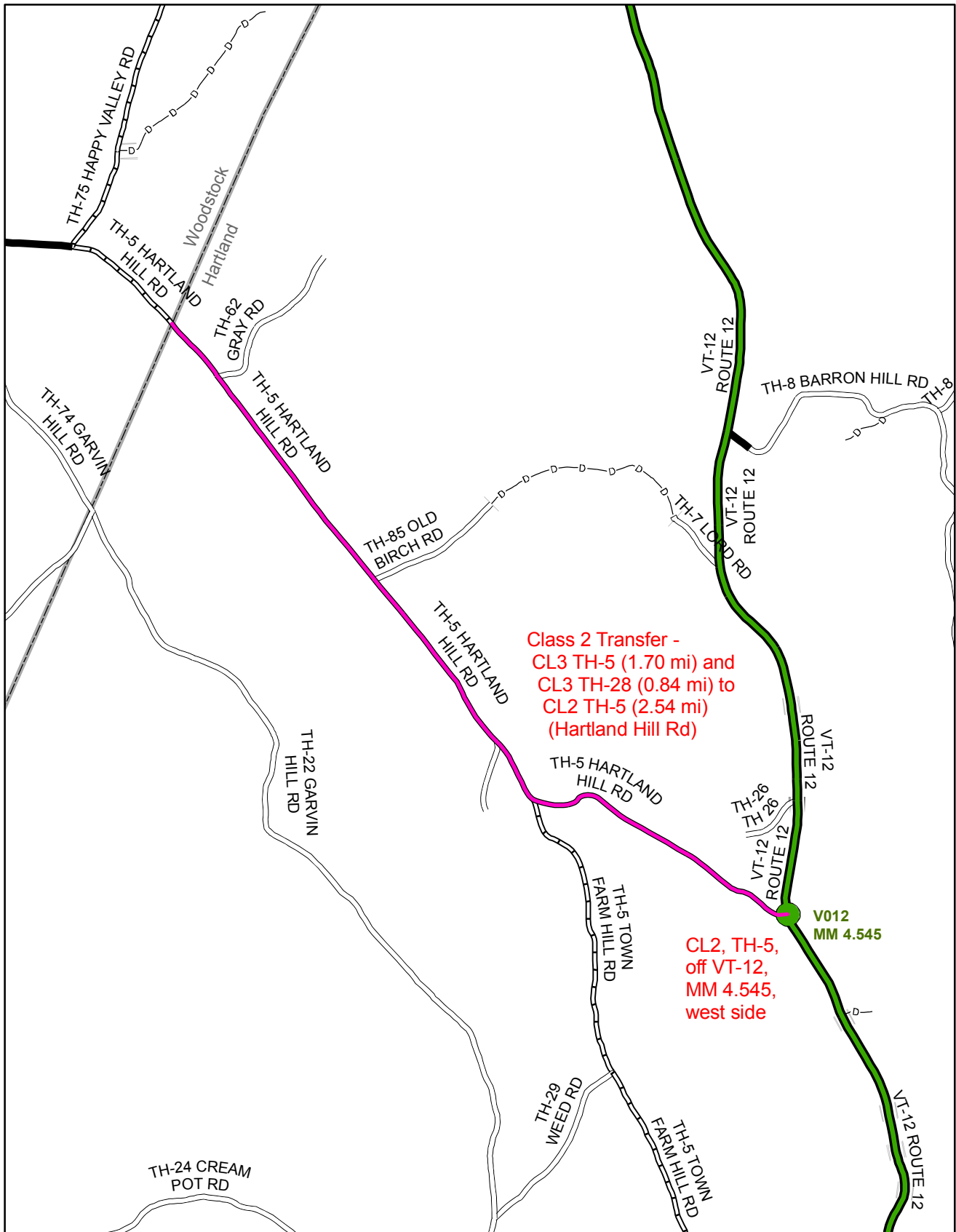
Mileage Certificate Change 2008 -- DUMMERSTON

Mapping Unit
Policy & Planning Division
Vermont Agency of Transportation -- March 2008



0 0.1 Miles

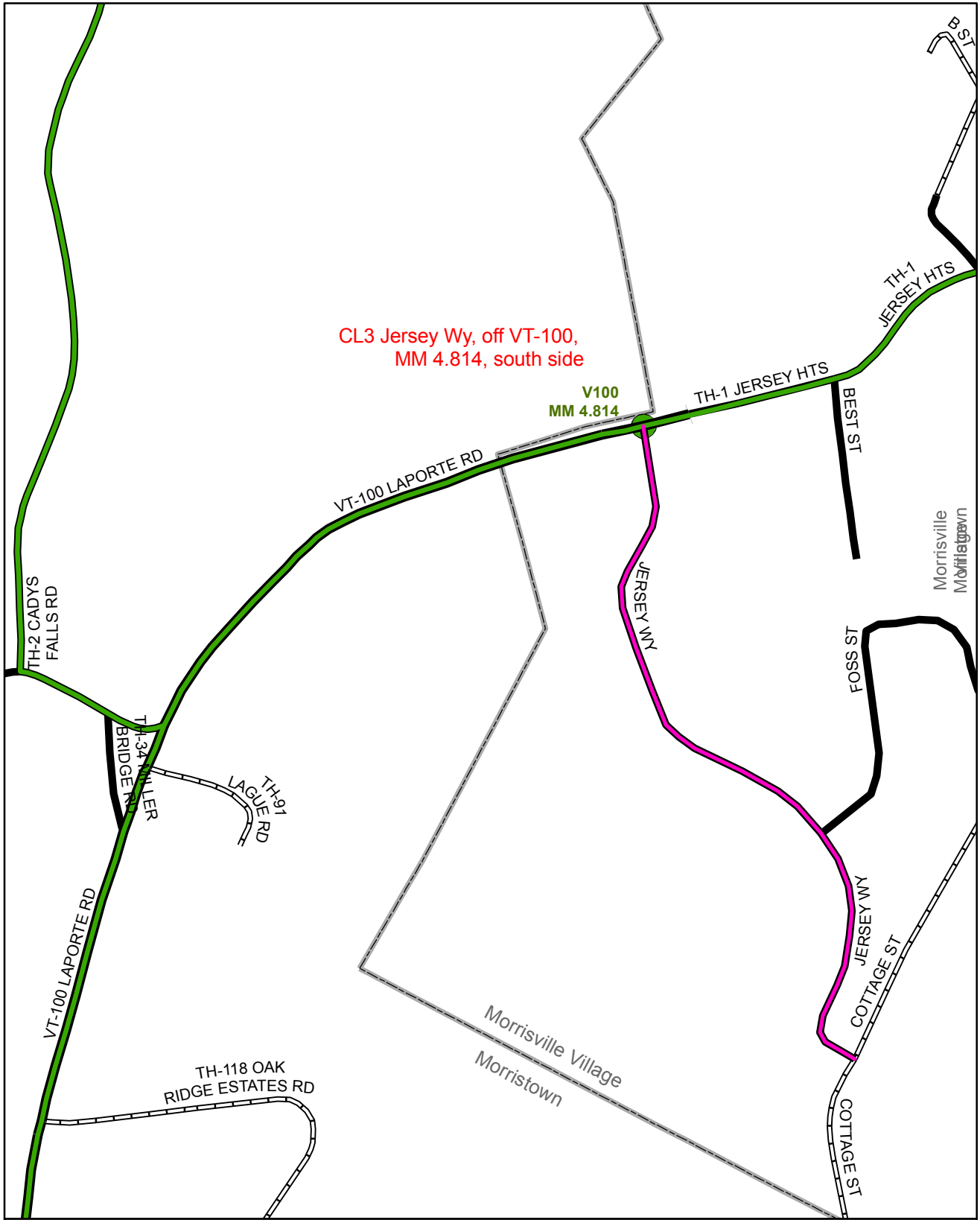




Mileage Certificate Change 2008 -- HARTLAND

Mapping Unit
 Policy & Planning Division
 Vermont Agency of Transportation -- February 2008





CL3 Jersey Wy, off VT-100,
MM 4.814, south side

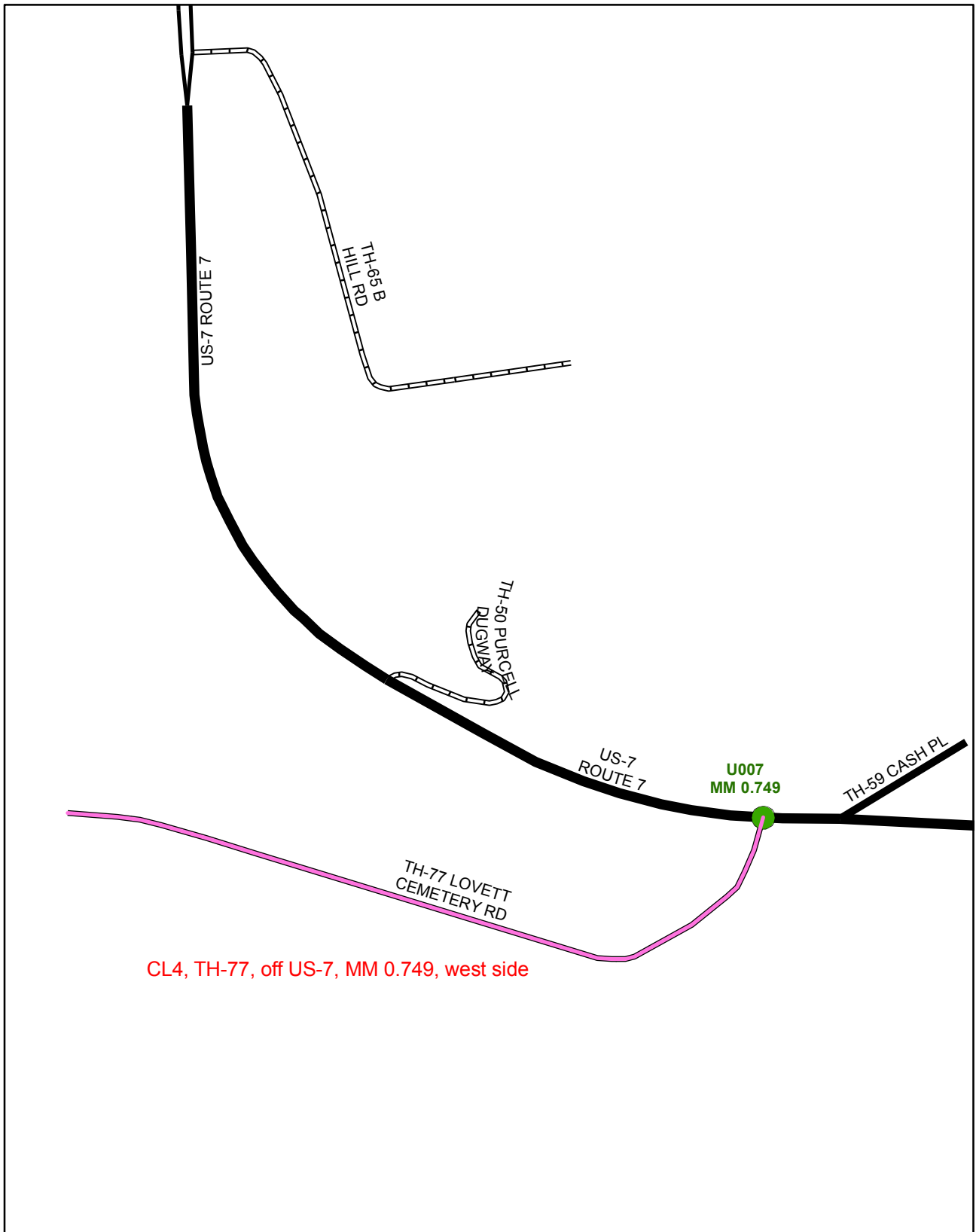
V100
MM 4.814

Mileage Certificate Change 2008 -- MORRISTOWN

Mapping Unit
Policy & Planning Division
Vermont Agency of Transportation -- March 2008



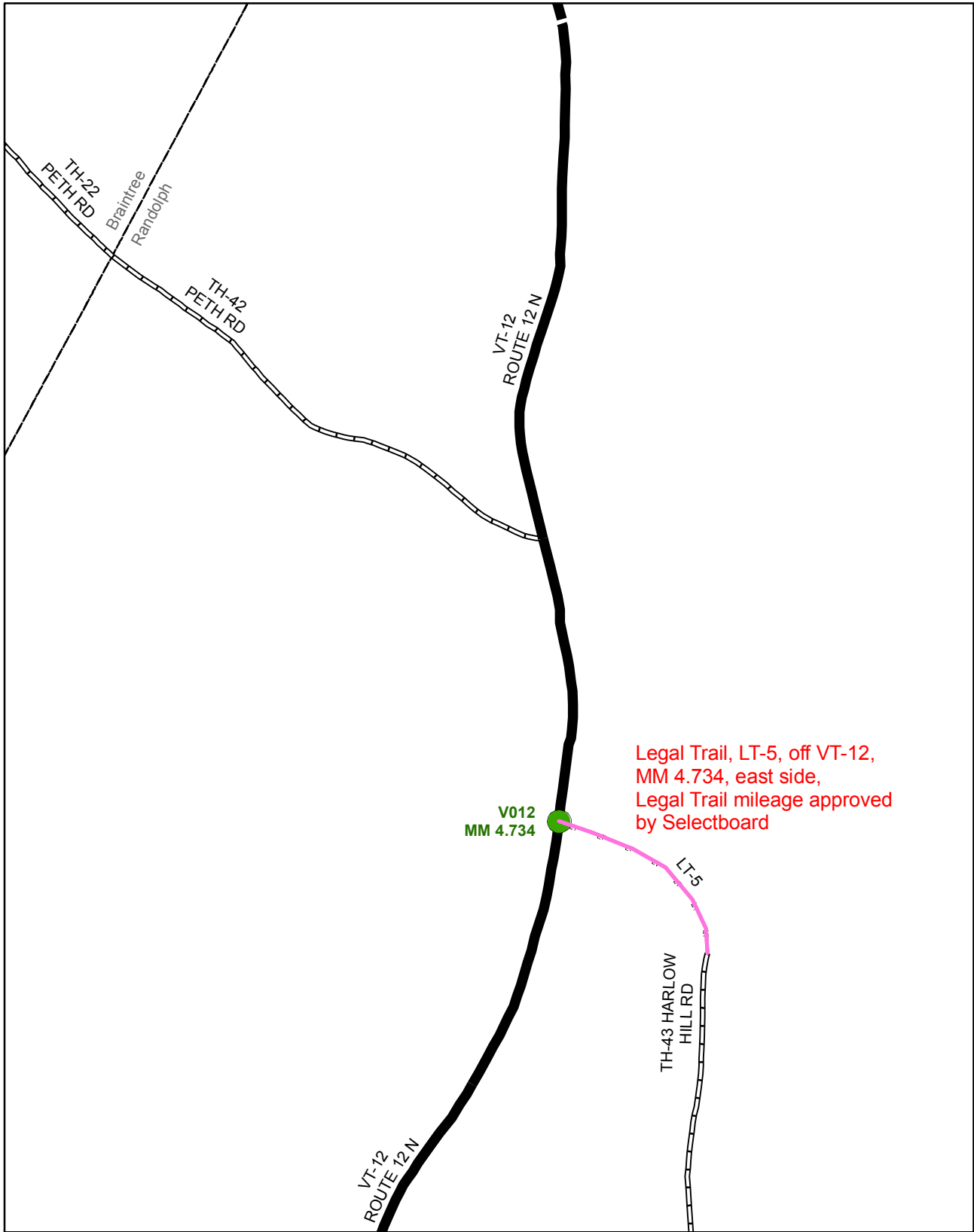
0 0.1 Miles



Mileage Certificate Change 2008 -- POWNAL

Mapping Unit
 Policy & Planning Division
 Vermont Agency of Transportation -- March 2008





Legal Trail, LT-5, off VT-12,
MM 4.734, east side,
Legal Trail mileage approved
by Selectboard

V012
MM 4.734

LT-5

TH-43 HARLOW
HILL RD

VT-12
ROUTE 12 N

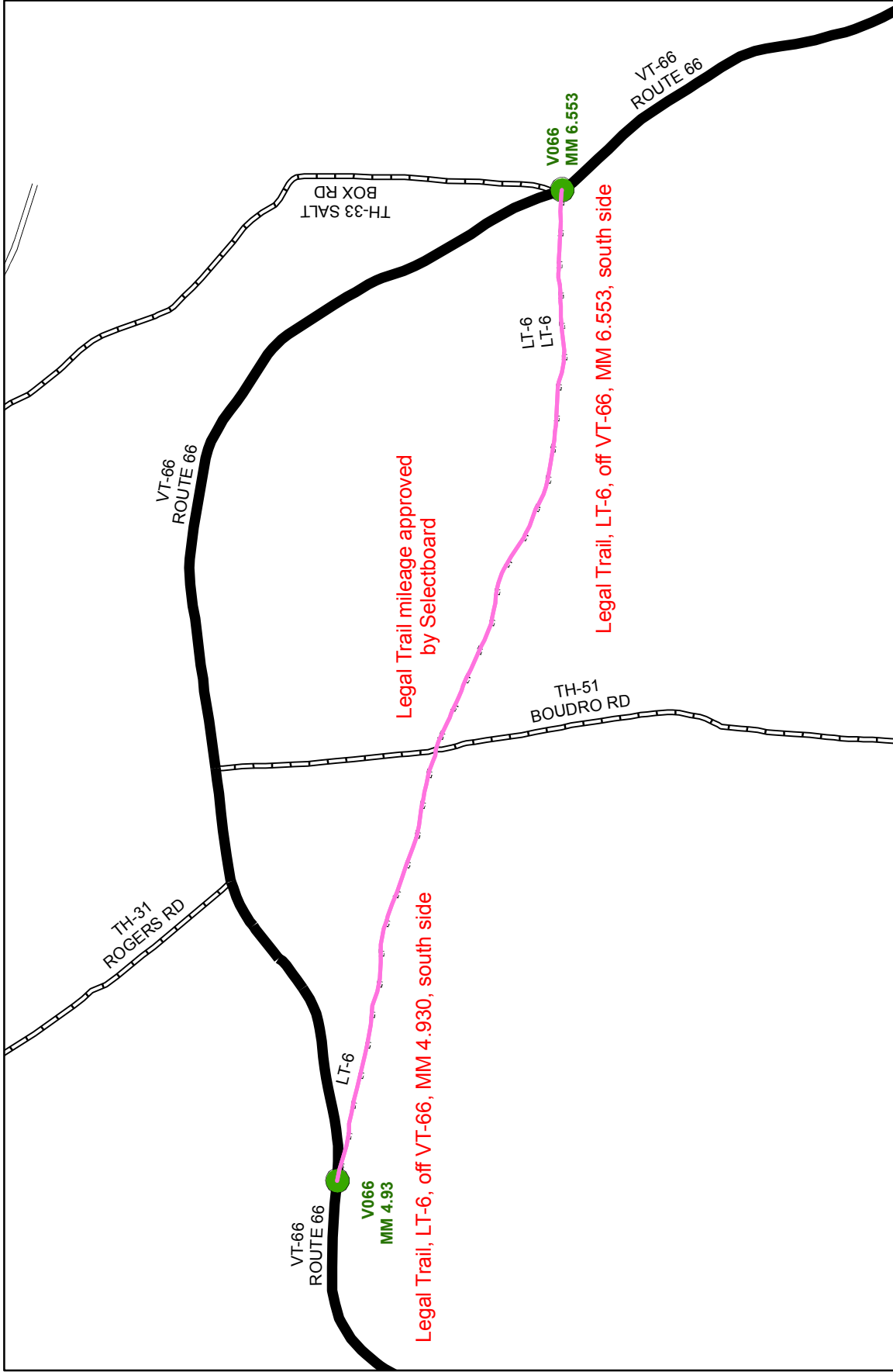
Mileage Certificate Change 2008 -- RANDOLPH

Mapping Unit
Policy & Planning Division
Vermont Agency of Transportation -- March 2008



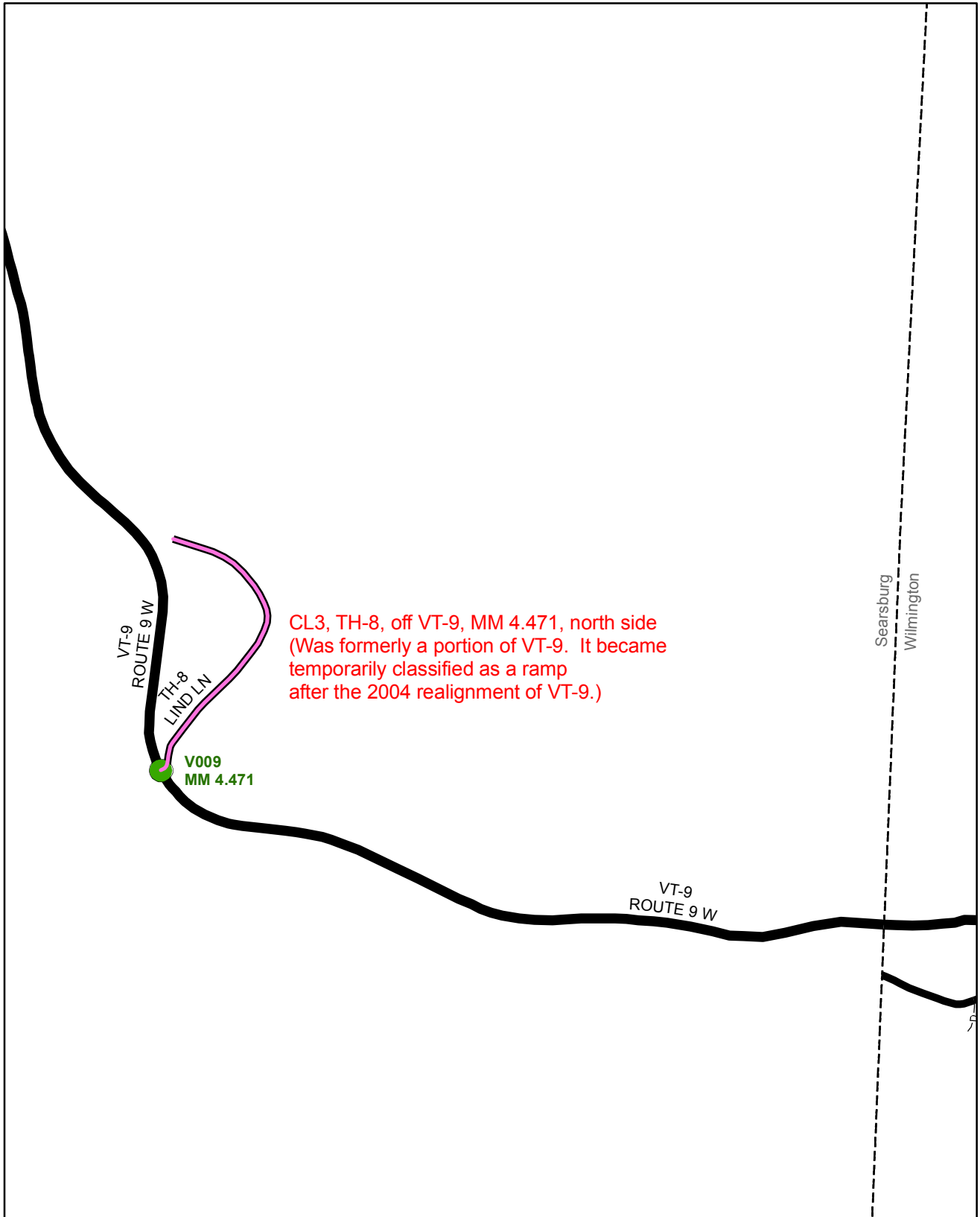
0 0.2 Miles





Mileage Certificate Change 2008 -- RANDOLPH

Mapping Unit
 Policy & Planning Division
 Vermont Agency of Transportation -- March 2008



CL3, TH-8, off VT-9, MM 4.471, north side
 (Was formerly a portion of VT-9. It became temporarily classified as a ramp after the 2004 realignment of VT-9.)

VT-9
 ROUTE 9 W
 TH-8
 LIND LN
 V009
 MM 4.471

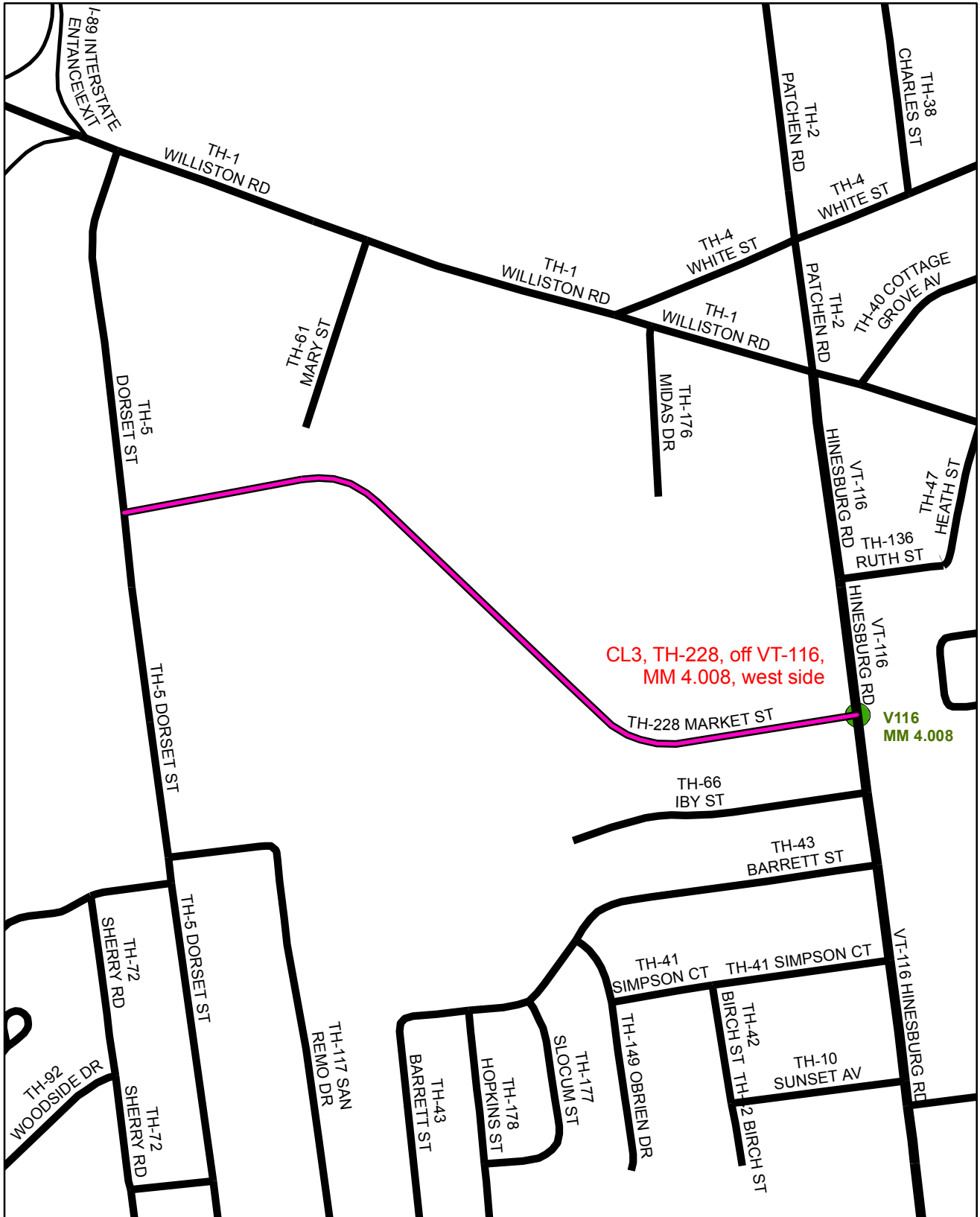
VT-9
 ROUTE 9 W

Searsburg
 Wilmington

Mileage Certificate Change 2008 -- SEARSBURG

Mapping Unit
 Policy & Planning Division
 Vermont Agency of Transportation -- March 2008



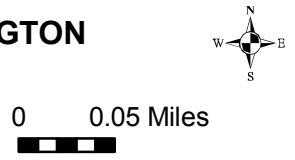


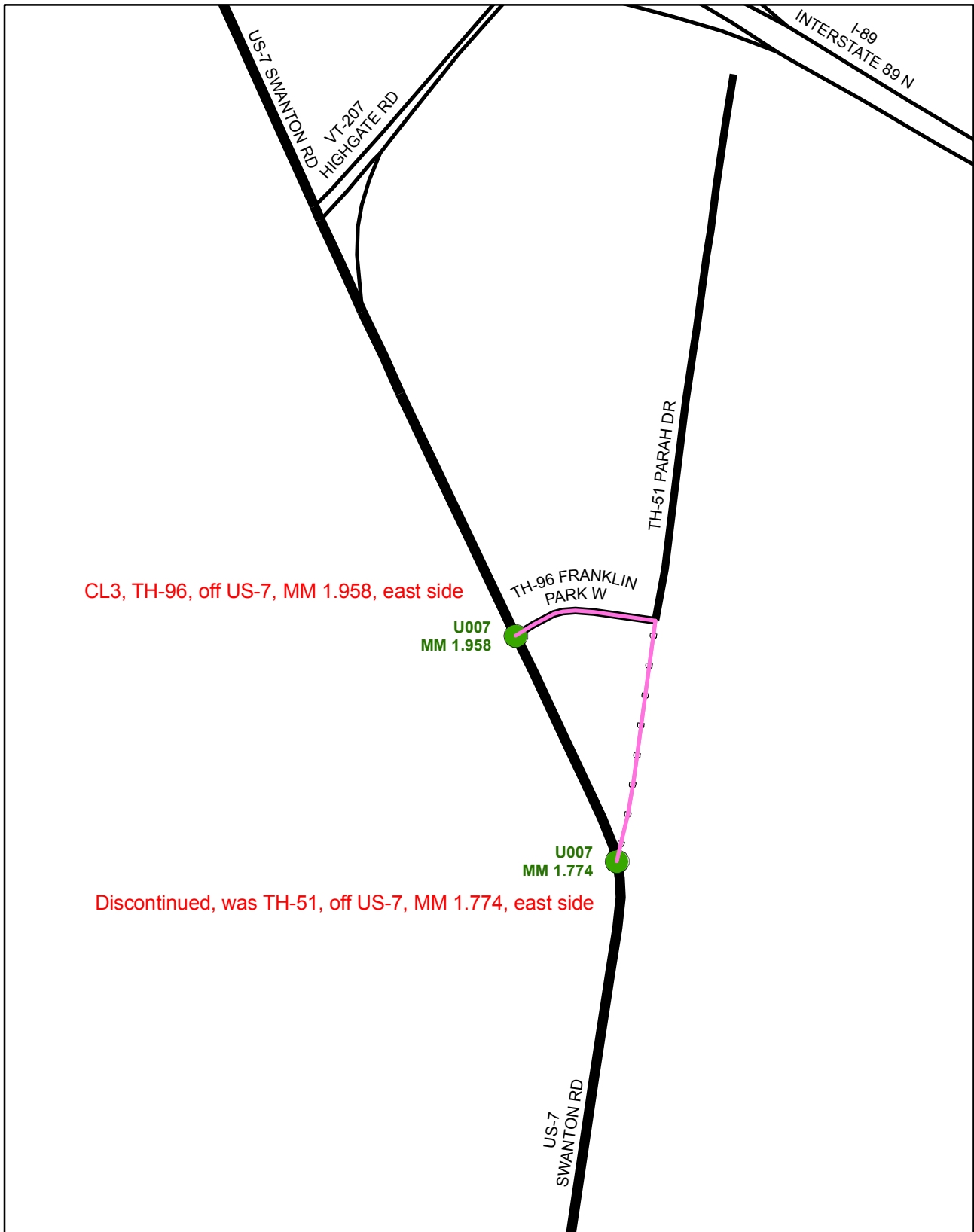
CL3, TH-228, off VT-116,
MM 4.008, west side

V116
MM 4.008

Mileage Certificate Change 2008 -- SOUTH BURLINGTON

Mapping Unit
Policy & Planning Division
Vermont Agency of Transportation -- March 2008



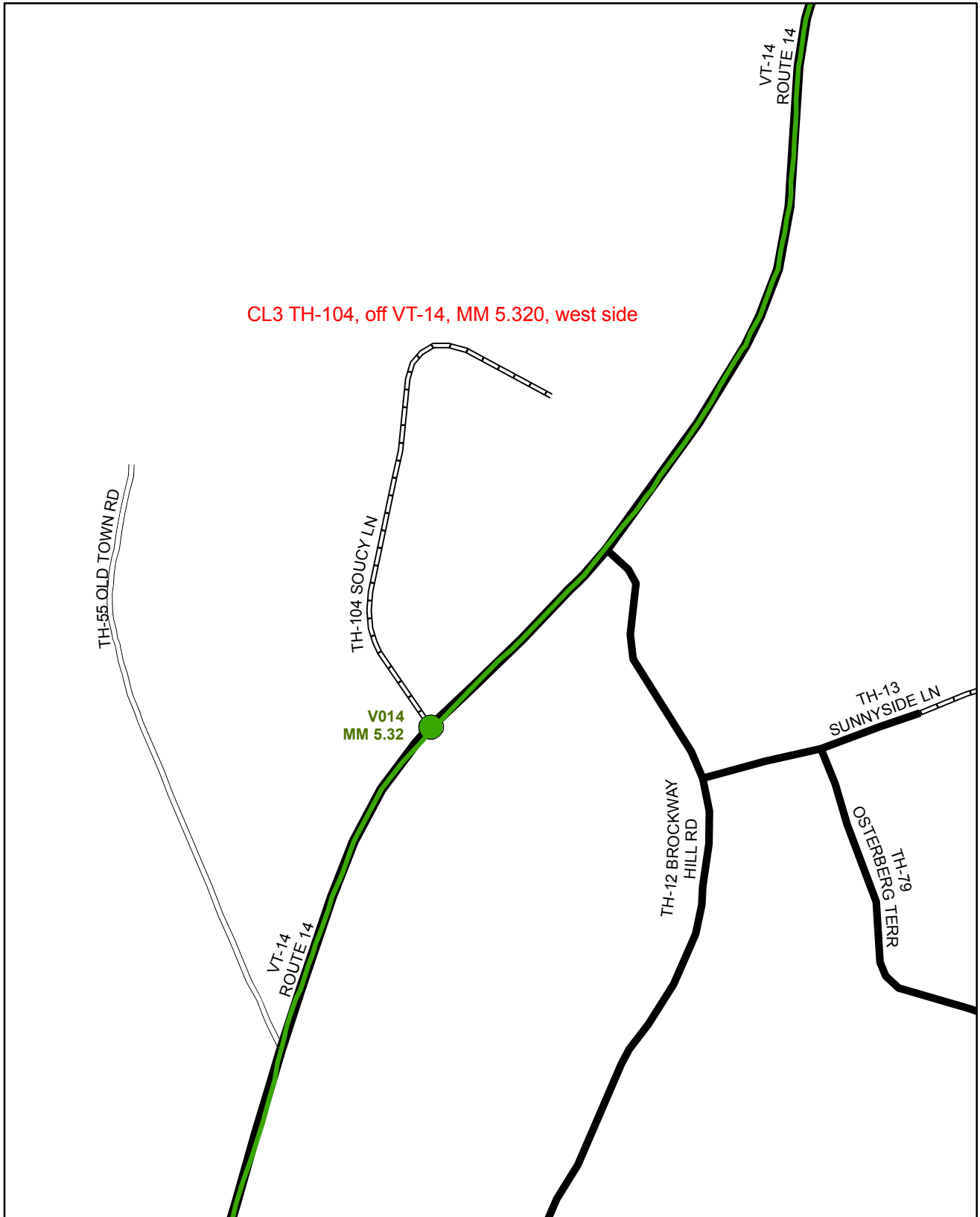


Mileage Certificate Change 2008 -- ST. ALBANS TOWN



Mapping Unit
 Policy & Planning Division
 Vermont Agency of Transportation -- March 2008

0 0.1 Miles



CL3 TH-104, off VT-14, MM 5.320, west side

V014
MM 5.32

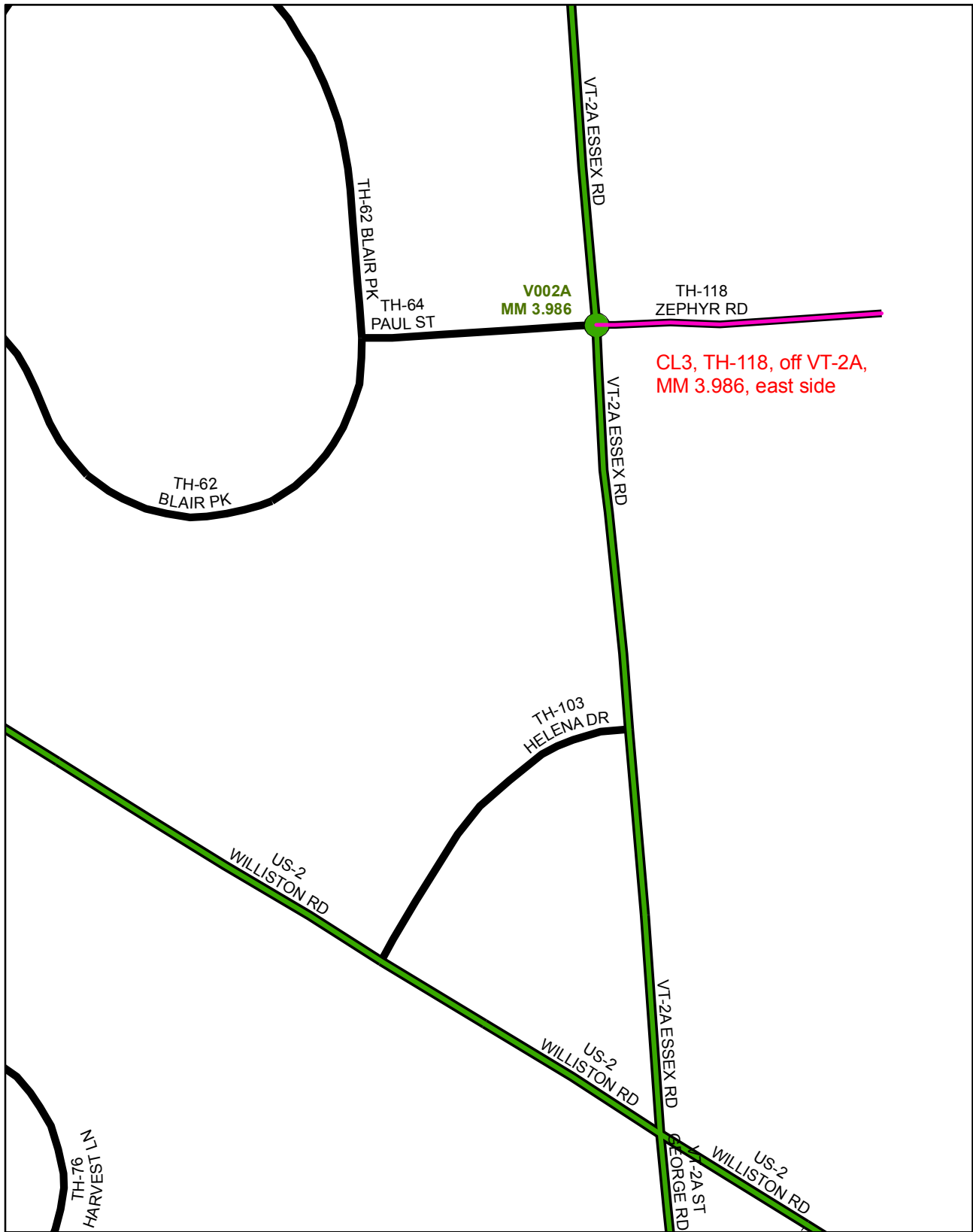
Mileage Certificate Change 2008 -- WILLIAMSTOWN

Mapping Unit
Policy & Planning Division
Vermont Agency of Transportation -- February 2008



0 0.05 Miles





Mileage Certificate Change 2008 -- WILLISTON

Mapping Unit
 Policy & Planning Division
 Vermont Agency of Transportation -- February 2008



0 0.05 Miles