

CERTIFICATE OF HIGHWAY MILEAGE
YEAR ENDING FEBRUARY 10, 2009

Fill out form, make and file copy with the Town Clerk, and mail ORIGINAL, before February 20, 2009 to:
Vermont Agency of Transportation, Policy and Planning Division, One National Life Drive, Montpelier, VT 05633.

We, the members of the legislative body of SPRINGFIELD in WINDSOR County

on an oath state that the mileage of highways, according to Vermont Statutes Annotated,
Title 19, Section 305, added 1985, is as follows:

PART I - CHANGES TOTALS - Please fill in and calculate totals.

Table with 6 columns: Town Highways, Previous Mileage, Added Mileage, Subtracted Mileage, Total, Scenic Highways. Rows include Class 1, Class 1 Lane, Class 2, Class 3, State Highway, Class 4, Legal Trail, and Total.

* Mileage for Class 1 Lane, Class 4, and Legal Trail classifications is NOT included in total.

PART II - INFORMATION AND DESCRIPTION OF CHANGES SHOWN ABOVE.

- 1. NEW HIGHWAYS: Please attach Selectmen's "Certificate of Completion and Opening".
2. DISCONTINUED: Please attach SIGNED copy of proceedings (minutes of meeting).
3. RECLASSIFIED/REMEASURED: Please attach SIGNED copy of proceedings (minutes of meeting).
4. SCENIC HIGHWAYS: Please attach a copy of order designating/discontinuing Scenic Highways.

IF THERE ARE NO CHANGES IN MILEAGE: Check box and sign below. [X]

PART III - SIGNATURES - PLEASE SIGN.

Selectmen/ Aldermen/ Trustees Signatures:

Handwritten signatures of John Swanson, Gene Benton, and Curtis C. Moss.

T/C/V Clerk Signature:

Handwritten signature of Meredith D. Kelley.

Date Filed: 02/17/09

Please sign ORIGINAL and return it for Transportation signature.

AGENCY OF TRANSPORTATION APPROVAL: Signed copy will be returned to T/C/V Clerk.

APPROVED:

Representative, Agency of Transportation

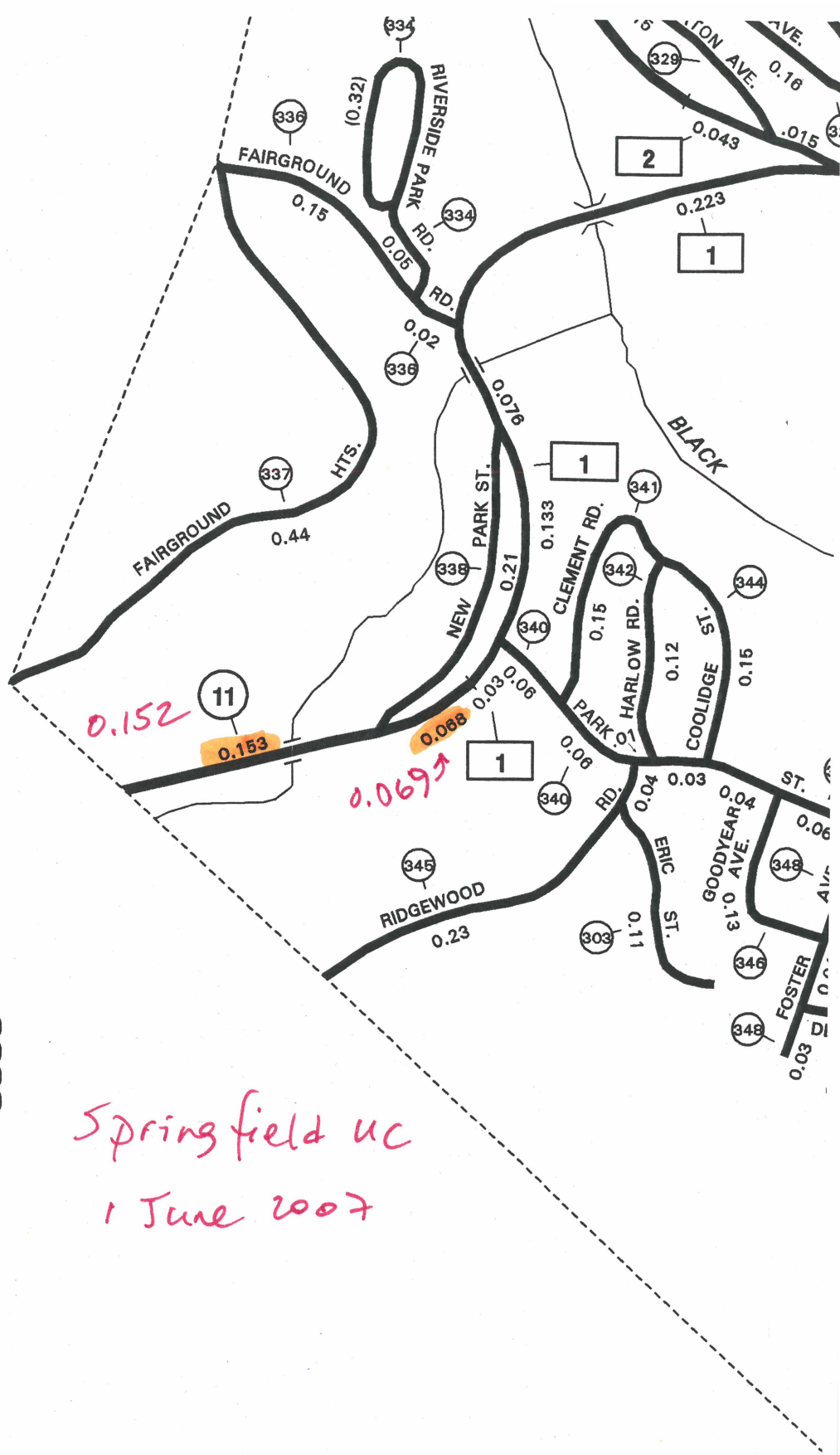
DATE:

2/18/2009

343 0.270
 346 0.130
 348 0.140
 349 0.060
 350 0.110
 352 0.070
 353 0.160
 354 0.120
 356 0.120
 357 0.300
 358 0.060
 360 0.250
 361 0.790
 362 0.100
 364 0.050
 365 0.440
 366 0.220
 368 0.040
 369 0.480
 370 0.070
 372 0.080
 373 0.140
 374 0.150
 376 0.250
 377 0.110
 378 0.140
 380 0.230
 381 0.040
 382 0.070
 384 0.080
 385 0.130
 386 0.220
 388 0.220
 389 0.300
 390 0.050
 391 0.150
 392 0.590
 393 0.130
 394 0.170
 396 0.090
 397 0.140
 *398 0.000
 *400 0.000
 *401 0.000
 *402 0.030
 404 0.250
 405 0.170
 406 0.100
 408 0.100
 409 0.110
 410 0.100
 412 0.060
 413 0.380
 414 0.150
 416 0.200
 417 0.030
 418 0.530
 420 0.060
 421 0.040
 422 0.640
 424 0.070
 425 0.330
 426 0.240
 428 0.200
 429 0.230
 430 0.500
 432 0.040
 433 0.080
 434 0.110
 436 0.130

(0.040)
 (0.090)
 (0.110)
 (0.030)

Springfield UC
 1 June 2007



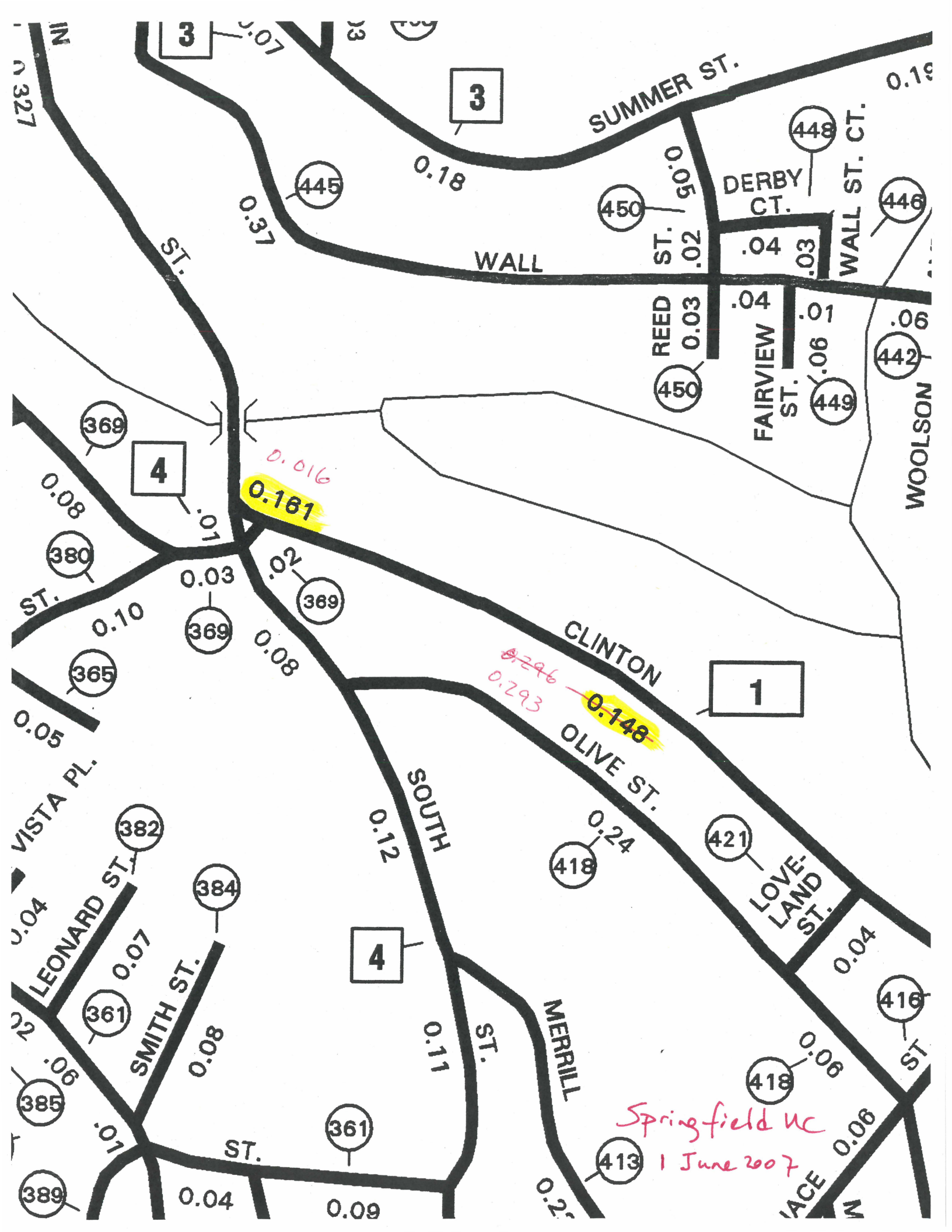
MILEAGE SUMMARY

CLASS 1 TOWN HIGHWAYS:		
NO.	1	2.836
NO.	2	0.043
TOTAL, CLASS 1 TOWN HWYS.		
CLASS 2 TOWN HIGHWAYS:		
NO.	3	1.190
NO.	4	1.240
NO.	5	0.970
TOTAL, CLASS 2 TOWN HWYS.		

SPRINGFIELD CL1 TH-1

0.03
0.133
0.076
0.223
0.357
0.185
0.018
0.071
0.327
0.161
0.148
0.115
0.466
0.438
0.073

2.821



4

3

1

4

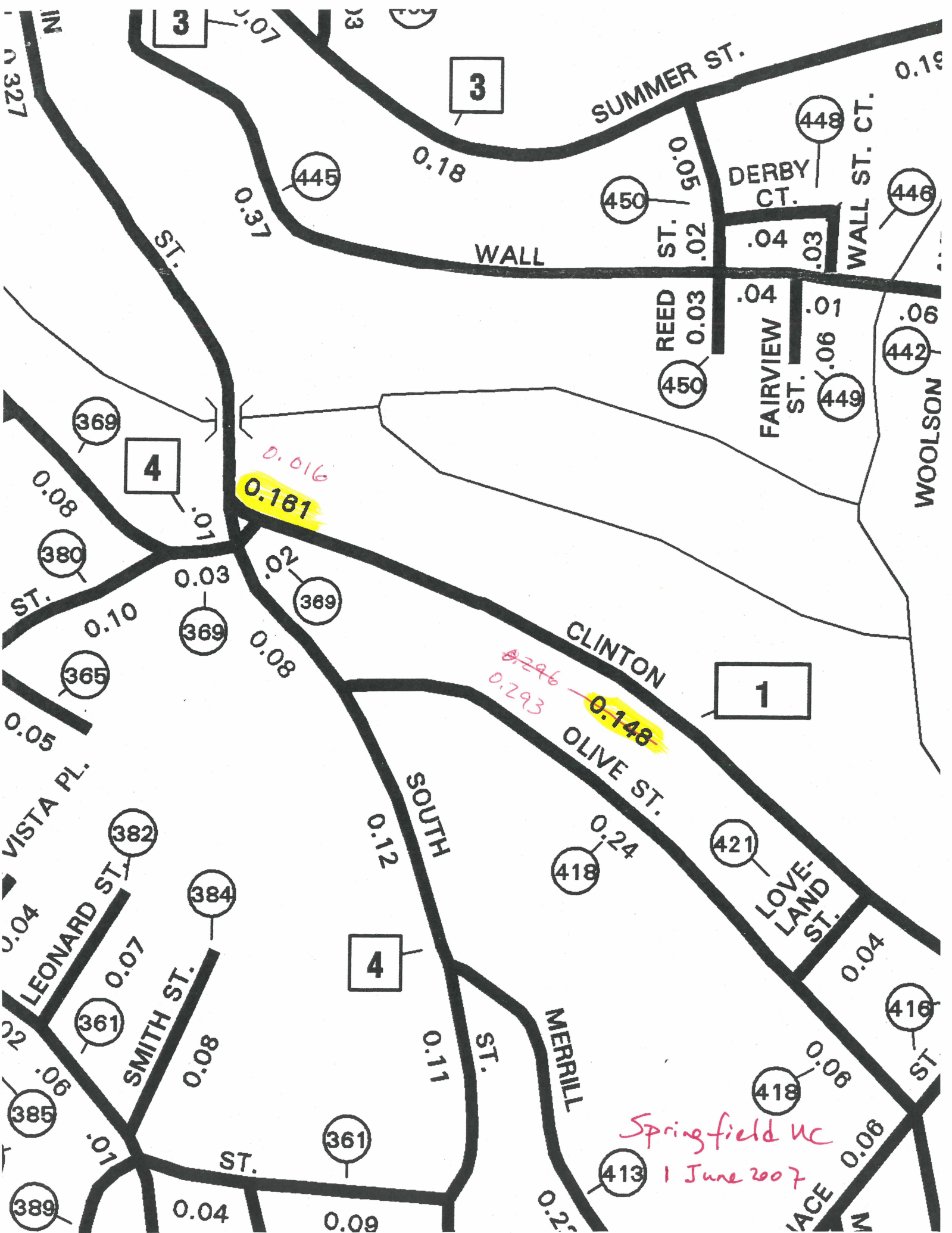
Springfield NC
1 June 2007

0.161

0.148

0.016

~~0.296~~
0.293



3

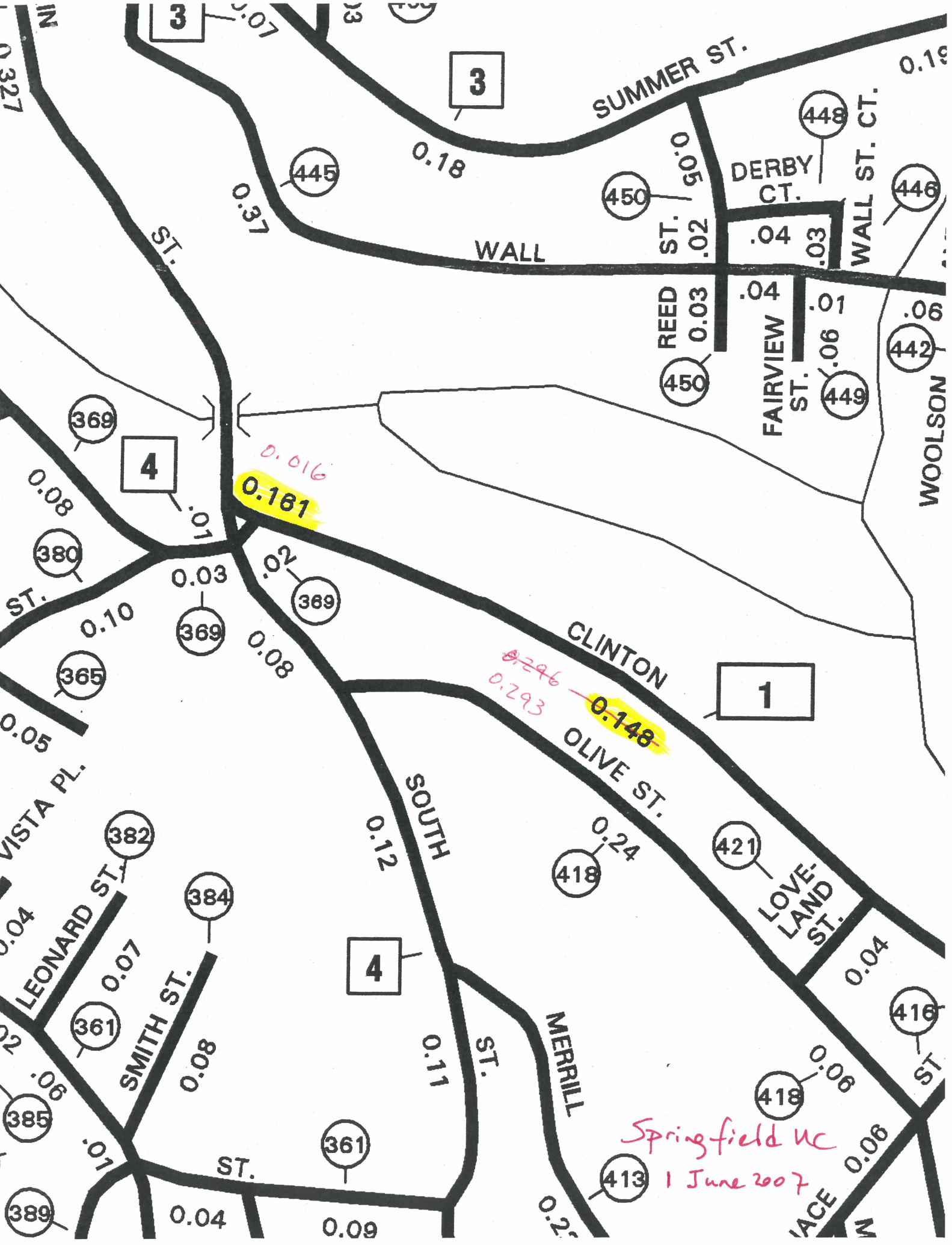
3

4

1

4

413



3

3

4

1

4

413

