

CERTIFICATE OF HIGHWAY MILEAGE FOR YEAR ENDING FEB. 10, 1989

Fill out the certificate, file a copy with the Town Clerk, and mail original to
Vt. Agency of Transportation, Planning Division before February 10, 1989 .

▶ IF NO CHANGES IN MILEAGE, OMT PART I, CHECK BOX IN PART II, AND SIGN PART III. ◀

PART I

DISTRICT 4

We, the Selectmen/Trustees/Aldermen of Hartland, Windsor County
on an oath state that the mileage of highways, according to Title 19, V. S. A. , Sec. * 305,
added 1985, is as follows:

| | TOWN HIGHWAYS | | | | STATE HIGHWAYS | TOTAL EXCLUDING CLASS 4 |
|--|---------------|---------|---------|---------|----------------|-------------------------|
| | CLASS 1 | CLASS 2 | CLASS 3 | CLASS 4 | | |
| PREVIOUS MILEAGE AS SHOWN FEBRUARY 10, 1988 | 0.000 | 13.720 | 61.590 | 2.960 | 24.682 | 99.992 |
| MILEAGE ADDED SINCE FEBRUARY 10, 1988 EXPLAIN UNDER (1) BELOW | | | | | | |
| SUB TOTAL | | | | | | |
| MILEAGE SUBTRACTED SINCE FEBRUARY 10, 1988 EXPLAIN UNDER (2) AND (3) | | | | | 0.002 | |
| TOTAL HIGHWAY MILEAGE FEB. 10, 1989 | 0.000 | 13.720 | 61.590 | 2.960 | 24.680 | 99.990 |
| SCENIC HIGHWAY MILEAGE (19 VSA 2502) | | | | | | |

DURING THE PAST YEAR THE FOLLOWING CHANGES HAVE OCCURRED.

(1) NEW HIGHWAYS: We hereby certify that the following new highways, as substantiated by the attached *Selectmen's Certificate of Completion, have been added.

(2) DISCONTINUED: We hereby certify that the following highways have been discontinued according to statute and are substantiated by the attached copy of the proceedings.

(3) RECLASSIFIED/REMEASURED: We hereby certify that the following highways have been reclassified/remeasured and are substantiated by the attached copy of the proceedings.

-0.002 mile due to Construction Project BRS 0113(21) 655

(4) SCENIC HIGHWAYS: We hereby certify that the following highways have been designated or discontinued as "Town Scenic Highways", and are substantiated by the attached copy of the proceedings.

PART II CHECK BOX IF NO CHANGES IN MILEAGES.

PART III

SELECTMEN/ALDERMEN/TRUSTEES
SIGNATURES

Larry J. Inger Chairman
Mark S. Derra
Patricia LeVander

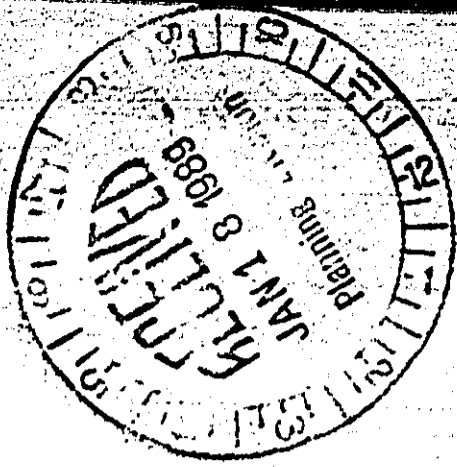
Town/City/Village/CLERK SIGNATURE: Mary W. Davis attests
that this record of highway mileage was filed and recorded on Jan. 17, 1989.

Approved: J. R. Landry

Representative, Agency of Transportation

Date 1-19-89

Note: Applicable section of Vermont Statutes is printed on reverse side.



Title 19, V. S. A. Section 305
Added 1985

SEC. 305. MEASUREMENT OF HIGHWAYS

(a) A representative of the agency in the presence of the selectmen or their designee shall measure and inspect the class 1, 2 and 3 town highways in each town at least once every ten years. The agency shall notify the town when any highway, or portion of a highway, does not meet the standards for its assigned class. If the town fails, within one year, to restore the highway or portion of the highway to the accepted standard, or to reclassify, or to discontinue, or develop an acceptable schedule for restoring to the accepted standards, the agency for purposes of apportionment under section 306 of this title shall deduct the affected mileage from that assigned to the town for the particular class of the road in question.

(b) Annually, on or before February 10, the selectmen shall, after review by a representative of the agency, file with the town clerk a sworn statement of the description and measurements of all class 1, 2 and 3 town highways, then in existence, including any special designation such as a throughway or scenic highway. When class 1, 2 or 3 town highways are accepted, discontinued, or reclassified, a copy of the proceedings shall be filed in the town clerk's office and a copy shall be forwarded to the agency.

(c) The agency shall not accept any change in mileage until the records required to be filed in the town clerk's office by this section are received by the agency.

(d) The selectmen of any town who are aggrieved by a finding of the agency concerning the measurement, description or classification of a town highway may appeal to the board by filing a notice of appeal with the executive secretary of the board.

Title 19, V. S. A. Section 2502
Added 1985

Sec. 2502. TOWN SCENIC ROADS; DESIGNATION AND DISCONTINUANCE

(a) On recommendation of the planning commission of a municipality, or on the initiative of the legislative body of a municipality, a legislative body may, after one public hearing warned for the purpose, designate or discontinue any town highway or portion of a town highway, as a town scenic highway. Such action by the legislative body may be petitioned by the registered voters of the municipality pursuant to the provisions of section 1973 of Title 24.

(b) A town scenic road may be reconstructed or improved in a manner consistent with the standards established by the transportation board, pursuant to section 425 of Title 10. A class 1, 2 or 3 scenic highway shall still be eligible to receive aid pursuant to the provisions of this title.

(c) The legislative body of a municipality may appeal for a variance from standards promulgated by the transportation board. In these appeals the board's decision shall be final.

RETURN TO: VERMONT AGENCY OF TRANSPORTATION
DEPARTMENT OF PLANNING AND PRECONSTRUCTION
PLANNING DIVISION
133 STATE STREET
MONTPELIER, VERMONT 05602

INDEX OF SHEETS

| | | |
|--------|---|------------|
| 1. | TITLE | |
| 2. | TYPICAL | |
| 3-5. | SUMMARY OF QUANTITIES | |
| 6. | ITEM DETAIL AND DRAINAGE SHEET | |
| 7. | EARTHWORK AND GRADE SHEET | |
| 8-11. | ROW DETAIL SHEETS | |
| 12-14. | PLAN AND PROFILE SHEETS | |
| 15. | UTILITIES SHEET | |
| 16. | TRAFFIC SIGNS AND SIGNALS | |
| 17-48. | BRIDGE 100 SERIES | |
| 49. | BLANK | |
| 50-67. | CROSS SECTIONS | |
| 68-71. | DRIVEWAY DETAILS | |
| 72. | BLANK | |
| 73. | A-60 DRILLING AND BLASTING OF SOLID ROCK SUBGRADE | 02/04/86 |
| 74. | B-5 TYPICAL SLOPE ROUNDING | 12/06/71 |
| 75. | B-11 UNDERDRAIN, SLOPE STABILIZATION | 12/12/74 R |
| 76. | B-13 DRIVE INTERSECTION | 12/14/71 |
| 77. | B-71 RESIDENTIAL AND COMMERCIAL DRIVES | 07/23/80 R |
| 78. | C-1 CURB DETAILS | 10/25/85 R |
| 79. | D-2 HEADWALL AND UNDERDRAIN CONSTRUCTION DETAILS | 10/30/85 R |
| 80. | D-3 EROSION MATTING | 04/02/86 |
| 81. | D-4 UNDERDRAIN FLUSHING BASINS METAL END SECTION | 10/30/85 R |
| 82. | D-6 REINF. CONCRETE DROP INLET W/GRATE | 04/04/73 R |
| 83. | D-11 CAST IRON GRATE TYPE A | 08/24/81 R |
| 84. | D-16 PRECAST REINFORCED CONCRETE CURB DROP INLET WITH CAST IRON GRATE | 10/30/85 R |
| 85. | E-2 ROAD CONSTRUCTION APPROACH SIGNS | 02/03/86 R |
| 86. | E-6 ON-PROJECT CONSTRUCTION SIGNS | 02/03/86 R |
| 87. | E-7 DELINEATION AND BARRICADES FOR CONSTRUCTION AREAS | 02/03/86 R |
| 88. | E-7A BARRICADE DETAILS - BREAKAWAY | 02/03/86 R |
| 89. | BLANK | |
| 90. | F-15B REGULATORY SIGN | 02/03/86 R |
| 91. | BLANK | |
| 92. | E-19A WARNING SIGNS | 02/03/86 R |
| 93. | E-19B WARNING SIGNS | 02/03/86 R |
| 94. | E-24A FLANGED CHANNEL STEEL SIGN SUPPORTS | 02/03/86 R |
| 95. | E-29 STANDARD SIGN PLACEMENT-NON-EXPRESSWAY TYPE | 02/03/86 R |
| 96. | G-1 STEEL BEAM GUARD RAIL | 10/31/85 R |
| 97. | G-1D STEEL BEAM GUARD RAIL | 10/31/85 R |
| 98. | G-4 WOOD MARKER POSTS | 10/31/85 R |
| 99. | G-14 BREAKAWAY CABLE TERMINAL | 10/31/85 R |
| 100. | J-1 BOUNDARY MARKERS | 06/27/80 |
| 101. | T-1 TEMPORARY EROSION CONTROL DETAILS | 12/07/76 R |
| 102. | T-2 TEMPORARY EROSION CONTROL DETAILS | |
| 103. | SB-R4A-82 BRIDGE RAILING GALVANIZED BOX BEAM | 07/05/72 R |
| 104. | SB-R4B-82 GUARDRAIL APPROACH SECTION - TYPE I AND II | 12/13/84 R |
| 105. | SCB-D1-75 DETAILS OF W BEAM BRIDGES | 12/13/84 R |
| 106. | SCB-D4-76 DETAILS OF W BEAM BRIDGES | 09/14/81 R |
| 107. | SCB-D6-73 DETAILS OF W BEAM BRIDGES | 10/12/83 R |
| 108. | SCB-D7-71 DETAILS OF W BEAM BRIDGES | 01/03/79 R |
| | | 12/15/76 R |

STATE OF VERMONT AGENCY OF TRANSPORTATION

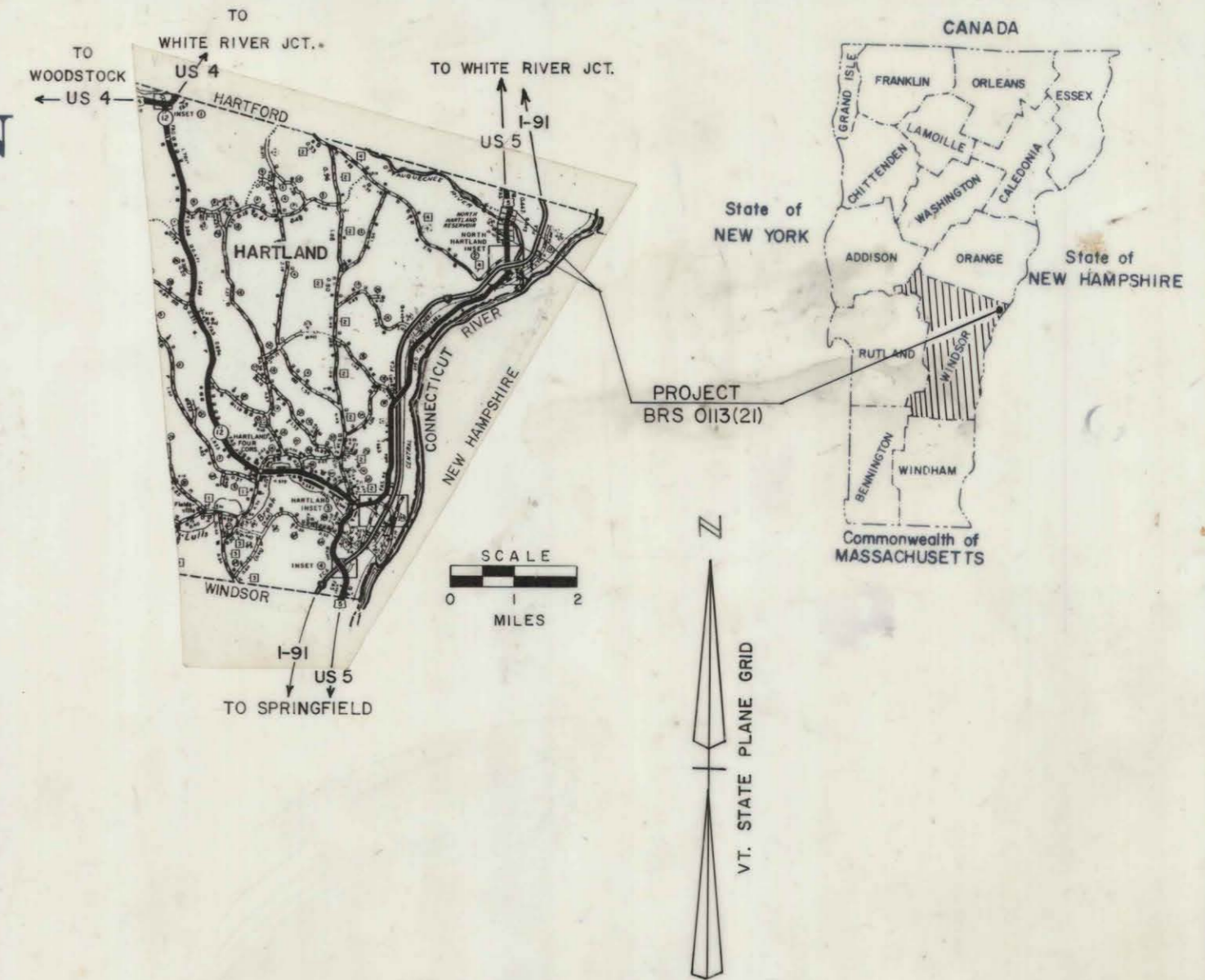


PROPOSED IMPROVEMENT TOWN OF HARTLAND COUNTY OF WINDSOR U.S. ROUTE 5 (F.A.S.)

BEGINNING AT A POINT APPROXIMATELY 0.685 MILES SOUTHERLY OF THE HARTLAND/HARTFORD TOWN LINE ON US 5 AND EXTENDING NORTHERLY APPROXIMATELY 0.227 MILES

LENGTH OF ROADWAY 980.41 FEET = 0.186 MILES
LENGTH OF BRIDGE 219.59 FEET = 0.041 MILES
LENGTH OF PROJECT 1200.00 FEET = 0.227 MILES

WORK TO BE PERFORMED UNDER THIS PROJECT CONSISTS OF A NEW BRIDGE OVER THE OTTAUQUECHEE RIVER AND CONSTRUCTING THE NECESSARY ROADWAY APPROACHES.

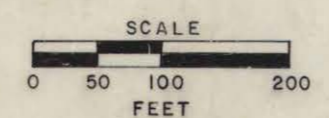
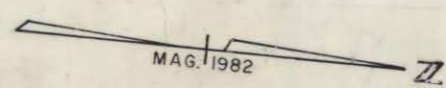
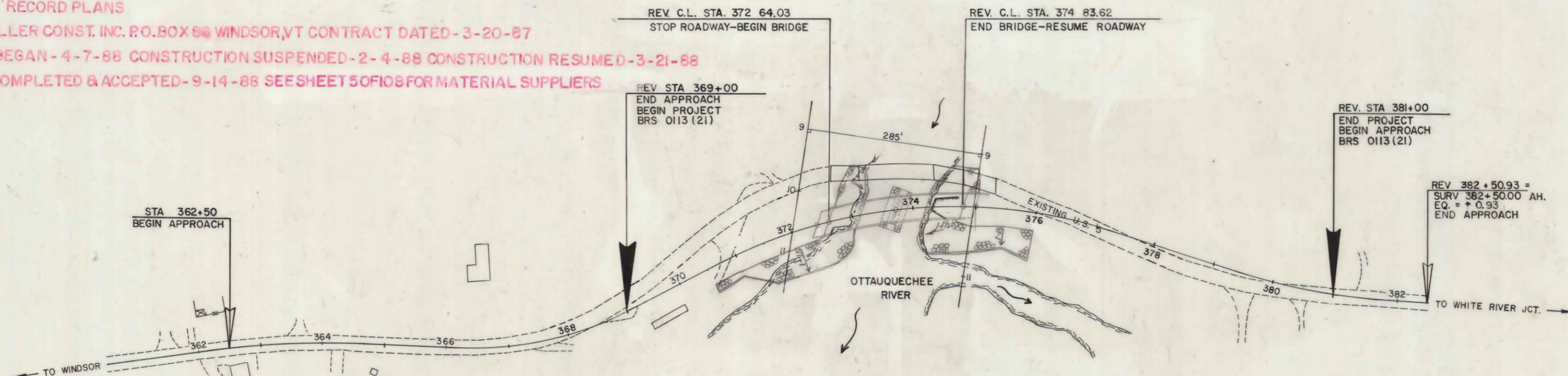


RECORD PLANS

CONTRACTOR-MILLER CONST. INC. P.O. BOX 88 WINDSOR, VT CONTRACT DATED-3-20-87
CONSTRUCTION BEGAN-4-7-88 CONSTRUCTION SUSPENDED-2-4-88 CONSTRUCTION RESUMED-3-21-88
CONSTRUCTION COMPLETED & ACCEPTED-9-14-88 SEE SHEET 50F108 FOR MATERIAL SUPPLIERS

TRAFFIC DATA

| | |
|----------|----------|
| 1985 ADT | = 2800 |
| 2005 ADT | = 4000 |
| 2005 DHV | = 550 |
| D | = 57% |
| T | = 3% |
| V | = 50 MPH |



CONVENTIONAL SIGNS

| | |
|-------------------|-------|
| COUNTY LINE | --- |
| TOWN LINE | - - - |
| LIMITS OF ACCESS | ○ ○ |
| POINT OF ACCESS | X |
| FENCE LINE | — x — |
| STONE WALL | — x — |
| TRAVELED WAY | — x — |
| GUARD RAIL | — x — |
| RAILROAD | — x — |
| SURVEY LINE | — x — |
| CULVERT | — x — |
| POWER POLE | ○ |
| TELEPHONE POLE | ○ |
| TREES | ○ |
| CONTROL OF ACCESS | /// |
| PROPERTY LINE | — x — |
| ROW TAKING LINE | — x — |
| SLOPE RIGHTS | SR |
| TOP OF CUT | ○ |
| TOE OF SLOPE | ○ |

DATUM

| | |
|------------|-----------|
| VERTICAL | NGVD 1929 |
| HORIZONTAL | N/A |

THESE PLANS ARE SUBJECT TO SUCH ENGINEERING CHANGES AS MAY BE REQUIRED BY THE FEDERAL HIGHWAY ADMINISTRATION OR THE CHIEF ENGINEER.
CONSTRUCTION IS TO BE CARRIED ON IN ACCORDANCE WITH THESE PLANS AND THE STANDARD SPECIFICATIONS FOR CONSTRUCTION DATED 1986, AS APPROVED BY THE FEDERAL HIGHWAY ADMINISTRATION ON NOVEMBER 21, 1985 FOR USE ON THIS PROJECT, INCLUDING ALL SUBSEQUENT REVISIONS AND SUCH REVISED SPECIFICATIONS AND SPECIAL PROVISIONS AS ARE INCORPORATED IN THESE PLANS.

SUBMITTED BY ORDER OF THE STATE TRANSPORTATION BOARD

APPROVED: *[Signature]* DATE: 8-8-88
DIRECTOR OF ENGINEERING AND CONSTRUCTION

DEPARTMENT OF TRANSPORTATION
FEDERAL HIGHWAY ADMINISTRATION

APPROVED: _____ DATE: _____
DIVISION ADMINISTRATOR

HARTLAND
PROJECT BRS 0113(21)

SHEET 1 OF 108 SHEETS

| | | |
|---|---|--|
| <p>Survey Φ</p> <p>PC. 362+18.35</p> | <p>Survey Φ</p> <p>PT. 375+97.64</p> | <p>Offset Channel Line</p> <p>POT. 11+00.00 285' Right</p> |
| <p>Survey Φ</p> <p>PI 363+42.15 = 363+41.53</p> | <p>Survey Φ</p> <p>PC. 377+69.97</p> | <p>Survey Φ</p> <p>Surv. POC 368+50 = Drive S.L. 0+00.00</p> |
| <p>Survey Φ</p> <p>PT. 364+65.33</p> | <p>Survey Φ</p> <p>PT. 381+59.28</p> | <p>Drive S.L.</p> <p>POT 2+50.07</p> |
| <p>Survey Φ</p> <p>PT. 369+06.98</p> | <p>Channel Line</p> <p>Chan Line 10+00.00 = Surv. POC 375+00.00</p> | |
| <p>Survey Φ</p> <p>PC. 369+46.04</p> | <p>Channel Line</p> <p>POT 9+25.00</p> | |
| <p>Survey Φ</p> <p>PI. 372+93.15 BK = 372+50.55 Ah.</p> | <p>Offset Channel Line</p> <p>POT. 9+25.00 285' Right</p> | |

Special Ditch (Item 203.15)
Rev. 369+00 Lt ~ Rev. 369+50 Lt.

Drilling & Blasting of Solid Rock Subgrade
Rev. 369+00 ~ Rev. 369+50 ✓

Removal of Existing Portland Cement Concrete Pavement (Item 203.16)
362+50 ~ Rev. 369+50 ✓

** Begin removal of PCC pavement at a construction joint; exact location to be determined in field.

Remove existing Topsoil* Stockpile, spread Topsoil back on new 1-4 slopes. (*depth to be determined by the Engineer) Payment subsidiary to other Items.
364+30 ~ 369+00 Rt.

STEEL BEAM GUARD RAIL
Rev. 369+02 Rt ~ Rev. 369+50 Rt.
13

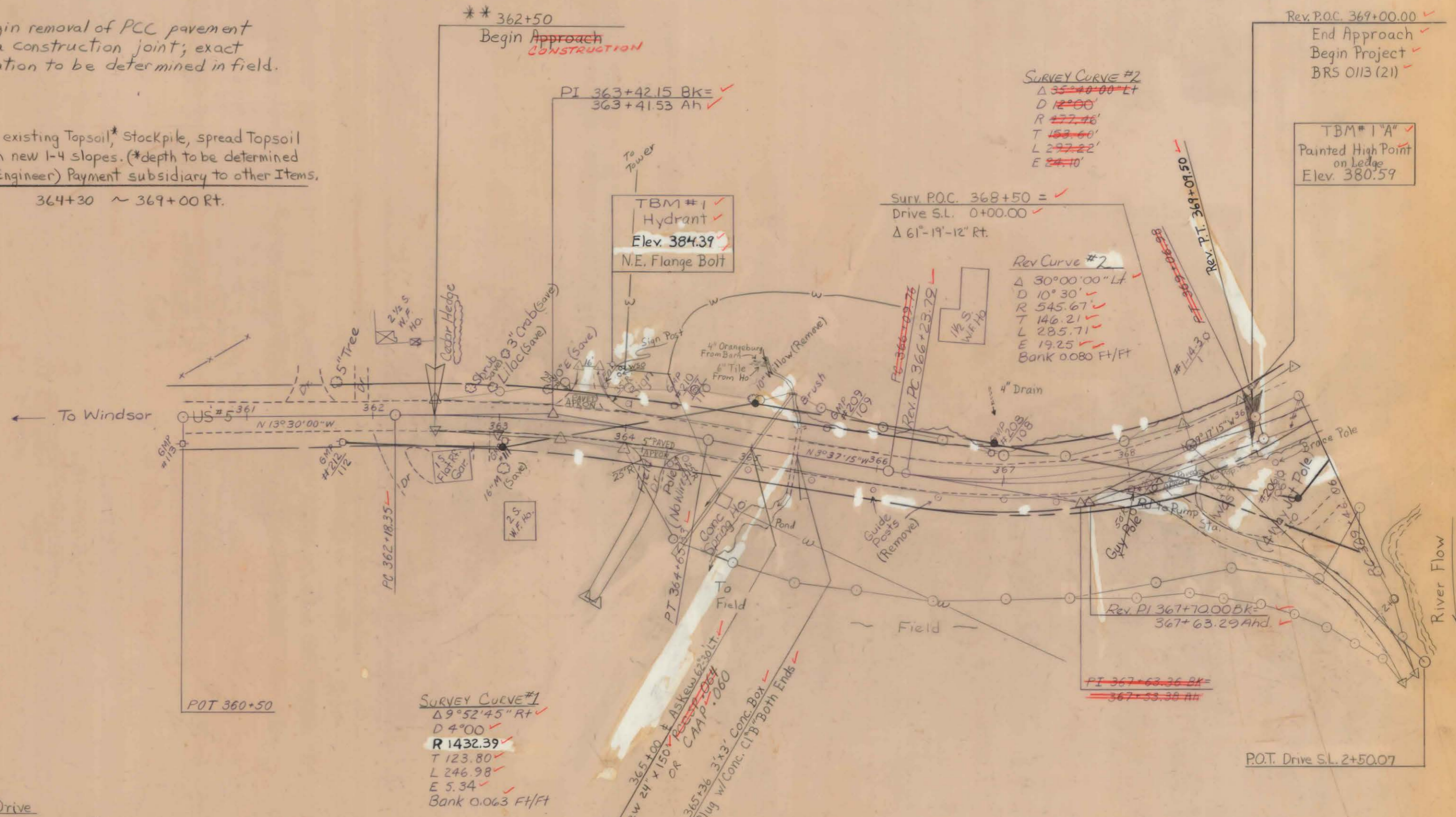
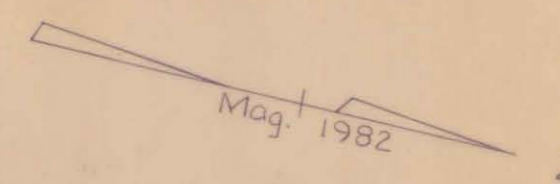
BCT
Rev. 369+02 Rt ~ Rev. 369+50 Rt.
13

Erosion Matting Lt.
Surv. 365+30 ~ Rev. 369+50

Removal and Disposal of Guide Posts
364+50 Rt ~ Rev. 369+50 Rt.
41
363+96

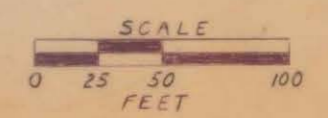
Temporary 4" White Lines
362+50 Rt ~ Rev. 369+50 Rt.
362+50 Lt ~ Rev. 369+50 Lt.

Temporary 4" Yellow Lines (Double)
362+50 ~ 363+45
363+85 ~ Rev. 369+50



Construct Drive
 363+65 Lt 16' Wide (Gravel) ✓
 362+88 Rt 12' Wide (Gravel) ✓
 364+25 Lt 12' Wide (Gravel) ✓
 Rev. 368+00 Rt 12' Wide (Gravel) ✓

DATUM
 VERTICAL NGVD 1929
 HORIZONTAL N/A



SURVEYED BY TESSIER DATE MAR '82
 DRAWN BY SHERIDAN DATE OCT '82
 TRACED BY MCLURE DATE OCT '82
 HARTLAND
 PROJ. BRS NO. 0113 (21)
 SHEET 12 OF 108

Drilling & Blasting of Solid Rock Subgrade

Rev. 369+50 ~ Rev. 370+75
Rev. 378+00 ~ Rev. 381+50

Removal of Existing Portland Cement Concrete Pavement (To Be Paid Under Item 203.16)

Rev. 369+50 ~ Rev. 370+52.14
Rev. 375+30 ~ Rev. 382+00

Excavation of Surfaces & Pavements (Removal of Existing Portland Cement Concrete Pavement) (Item 203.28)

Rev. 370+52.14 ~ Rev. 372+80 Lt.

Gravel Parking Area (Rev. 372+00 ~ 372+70 Lt.)

(See Special Provisions)

PLANK RAIL

Lt.
Rev. 372+10 ~ Rev. 372+72

Removal & Disposal of GUARD RAIL

Rev. 371+85 Lt. ~ Rev. 372+00 Lt.
Rev. 372+10 Lt. ~ Rev. 372+85 Lt.
Rev. 375+32 Lt. ~ Rev. 378+32 Rt.
Rev. 375+32 Lt. ~ Rev. 378+92 Rt.

STEEL BEAM GUARD RAIL

Lt. Rt.
Rev. 371+70 ~ Rev. 372+20 Lt. Rev. 369+50 ~ Rev. 371+84 Rt.
Rev. 375+75 ~ Rev. 378+12 Lt. Rev. 375+35 ~ Rev. 378+77 Rt.
377+45 378+19 379+00 379+00

Mag. 1/882

Z

Offset Chan POT 9+25
285' Rt

Rev PI 374+13.03 =
373+77.68
PI 372+93.15 BK =
372+50.88 Ah

ML POC 375+00
Ch POT 10+00

Chan POT 9+25

NEPA BM
Br. W.W.
Elev. 380.72

Rev. & Sta. 374+83.62
Back of Abutment #2
End Bridge - Resume Roadway

Rev. & Sta. 375+03.37
End Approach Slab #2

BCT

Rev. 371+45 ~ 371+70 Lt. Rev. 378+77 ~ 379+22 Rt.
Rev. 378+12 ~ 378+37 Lt. 379+00

Treated Timber Curb

Rev. 372+24 Rt. ~ Rev. 372+35 Rt.
Rev. 374+76 Rt. ~ Rev. 377+75 Rt. 281'

Temporary 4" WHITE LINES

Rev. 369+50 Rt. ~ Rev. 382+50 Rt.
Rev. 369+50 Lt. ~ Rev. 382+50 Lt.

TEMPORARY 4" Yellow Lines (Double)

Rev. 369+50 ~ Rev. 382+50

Erosion Matting

Lt.
Rev. 369+50 ~ Rev. 370+70

Guard Rail Approach Section, Type I

Rev. 372+20 ~ Rev. 372+70 Lt. Rev. 371+85 ~ Rev. 372+37 Rt.
Rev. 375+25 ~ Rev. 375+75 Lt. Rev. 374+85 ~ Rev. 375+35 Rt.

Survey Curve #4
D 900'
R 909.66'
T 195.33'
L 389.30'
E 9.95'

Rev Curve #4
Δ 13°31'42"
D 6°00'
R 954.93'
T 113.26'
L 225.46'
E 6.69'
Bank 0.077 Ft/Ft.

Access Rd. to Fed Flood Control Dam Area

Rev. POT 382+50.93 =
382+50 Ahead (EQ +0.93)
End Approach

End removal of PCC pavement at a construction joint; exact location to be determined in field.
Rev. 382+00(±)

Rev. Curve #3
Δ 45°03'04"
D 7'00'
R 818.51'
T 339.17'
L 643.59'
E 67.60'
Bank 0.060 Ft/Ft.
Survey Curve #3
Δ 48°52'01.5"
D 7'30'
R 743.41'
T 347.07'
L 651.58'
E 75.75'

Construct Drive

Rev. 371+25 Lt. 14' Wide (Gravel)
Rev. 381+50 Lt. 24' Wide (Gravel)
Rev. 379+64 Rt. 50' Wide (Gravel)
Rev. 380+50 Rt. 12' Wide (Gravel)

Stone Fill, Type II

Lt.
Rev. 375+60 ~ Rev. 378+00

Stone Fill, Type I

Lt.
Rev. 376+00 ~ Rev. 378+30

Special Ditch (Item 203.15)

Rev. 369+50 Lt. ~ Rev. 371+00 Lt.
Rev. 375+60 Lt. ~ Rev. 379+50 Lt.

TBM #2
Guy Pole
Elev. 423.99

PI 379+65.30 BK =
379+63.97 Ah

DATUM
VERTICAL NGVD 1929
HORIZONTAL N/A

SCALE
0 25 50 100
FEET

SURVEYED BY TESSIER DATE MAR '82
DRAWN BY SHERIDAN DATE OCT '82
TRACED BY MCCLURE DATE OCT '82
HARTLAND
PROJ. BRS NO. 0113(21)
SHEET 13 OF 108