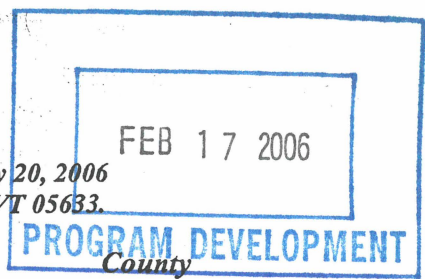


CERTIFICATE OF HIGHWAY MILEAGE
YEAR ENDING FEBRUARY 10, 2006

Fill out form, make and file copy with the Town Clerk, and mail ORIGINAL, before February 20, 2006
to: VT Agency of Transportation, Program Development Division, Drawer 33, Montpelier, VT 05633.



We, the Selectmen or Aldermen or Trustees of GRAFTON

in WINDHAM

County

on an oath state that the mileage of highways, according to Title 19, V.S.A, Sec #305, added 1985, is as follows:

PART I - CHANGES TOTALS - Please fill in and calculate totals.

Town Highways	Previous Mileage	Added Mileage	Subtracted Mileage	Total	Scenic Highways
Class 1	0.000				0.000
* Class 1 Lane	0.000				
Class 2	18.300				0.000
Class 3	30.760				0.000
State Highway	0.000				0.000
* Class 4	8.910				0.000
Total	49.060				0.000

* Class 1 Lane Mileage and Class 4 is NOT included in total.

PART II - INFORMATION AND DESCRIPTION OF CHANGES SHOWN ABOVE.

- NEW HIGHWAYS: Please attach Selectmen's "Certificate of Completion and Opening".
- DISCONTINUED: Please attach SIGNED copy of proceedings (minutes of meeting).
- RECLASSIFIED/REMEASURED: Please attach SIGNED copy of proceedings (minutes of meeting).
Approximately one mile from Eastman Road to Anderson Road reclassified to a trail.
- SCENIC HIGHWAYS: Please attach a copy of order designating/discontinuing Scenic Highways.

IF THERE ARE NO CHANGES IN MILEAGE: Check box and sign below. []

PART III - SIGNATURES - PLEASE SIGN.

Selectmen/ Aldermen/ Trustees Signatures:

David P. [Signature]
[Signature]
[Signature]

Clerk Signature: Cynthia N. Gibbs

Date Filed: Feb. 13, 2006

Please sign ORIGINAL and return it for Transportation signature.

AGENCY OF TRANSPORTATION APPROVAL: Signed copy will be returned to T/C/V Clerk.

APPROVED: [Signature]
Representative, Agency of Transportation
Jonathan Croft

DATE: 2/11/2006

PUBLIC HEARING – RECLASSIFICATION OF A PORTION OF BELL ROAD

DATE: January 30, 2006

CONVENED: 10:00 AM ADJOURNED: 11:45

SELECTMEN PRESENT: Bob Crawford, Anna Vesely, Harold Igoe

SELECTMEN ABSENT: Skip Lisle, David Rogers

ALSO PRESENT: Peggy Blumenthal, Doug Murray, Kevin Neathawk, Shane Neathawk, Arol Ward, Steve Fisher, Kent Armstrong, Chuck Dickison

Lengthy discussion about what the meaning of a “trail” is. Cannot find evidence as to what a portion of Bell Road classification is. Peggy Blumenthal and Doug Murray expressed their opinion that the portion of the road under discussion was a Class 4 Road. The Selectmen responded with the judgment that in the absent of adequately documented proof the board will follow its Ancient Road Policy. Representatives of The Grafton Outing Club, Arol Ward, Kevin Neathawk and Shane Neathawk, abutting owners, expressed support of the trail designation. Those present unanimously agreed that the on-site portion of the hearing was unnecessary.

Will vote on reclassification at next board meeting, February 13, 2006

Motion by Vesely to approve reclassification of approximately one mile from Eastman Road to Anderson Road to a trail. MOTION PASSED UNANIMOUSLY

TOWN HWY CLASS	LENGTH IN MILES CLASS
1	0.060
2	0.190
3	0.350
4	0.250
5	0.050
6	0.030
7	0.030
8	0.030
9	0.030
10	0.030
11	0.030
12	0.030
13	0.030
14	0.030
15	0.030
16	0.030
17	0.030
18	0.030
19	0.030
20	0.030
21	0.030
22	0.030
23	0.030
24	0.030
25	0.030
26	0.030
27	0.030
28	0.030
29	0.030
30	0.030
31	0.030
32	0.030
33	0.030
34	0.030
35	0.030
36	0.030
37	0.030
38	0.030
39	0.030
40	0.030
41	0.030
42	0.030
43	0.030
44	0.030
45	0.030
46	0.030
47	0.030
48	0.030
49	0.030
50	0.030
51	0.030
52	0.030
53	0.030
54	0.030
55	0.030
56	0.030
57	0.030
58	0.030
59	0.030
60	0.030
61	0.030
62	0.030
63	0.030
64	0.030
65	0.030
66	0.030
67	0.030
68	0.030
69	0.030
70	0.030
71	0.030
72	0.030
73	0.030
74	0.030
75	0.030
76	0.030
77	0.030
78	0.030
79	0.030
80	0.030
81	0.030
82	0.030
83	0.030
84	0.030
85	0.030
86	0.030
87	0.030
88	0.030
89	0.030
90	0.030
91	0.030
92	0.030
93	0.030
94	0.030
95	0.030
96	0.030
97	0.030
98	0.030
99	0.030
100	0.030
TOTAL	30.760 8.910

MILEAGE SUMMARY

CLASS 1 TOWN HIGHWAYS:		
TOTAL CLASS 1 TOWN HWYS.	0.000	
CLASS 2 TOWN HIGHWAYS:		
NO. 1	9.770	
NO. 2	3.230	
NO. 3	4.540	
NO. 4	0.260	
TOTAL CLASS 2 TOWN HWYS.	18.300	
CLASS 3 TOWN HIGHWAYS:		
TOTAL CLASS 3 TOWN HWYS.	30.760	49.060
TOTAL TOWN HWYS.		
STATE HIGHWAYS:		
INTERSTATE RAMPS	0.000	
TOTAL INTERSTATE HWYS.	0.000	0.000
TOTAL NON-INTERSTATE HWYS.	0.000	0.000
TOTAL STATE HWYS.		0.000
TOTAL TRAVELLED HWYS. FEB. 10, 2004		49.060
(EXCLUDES CLASS 4 MILEAGE)		

- HIGHWAYS
- INTERSTATE
 - STATE HIGHWAY SYSTEM
 - TOWN HIGHWAY SYSTEM
 - DISSEMINABLE OR UNTRAVELLED
 - DISCONTINUED
 - LOCAL TRAIL
 - FOOT TRAIL

- INTERSTATE ROUTE
- U.S. NUMBERED ROUTE
- STATE NUMBERED ROUTE
- INTERCHANGE NUMBER
- CLASS 1 TOWN HIGHWAY
- CLASS 2 TOWN HIGHWAY
- CLASS 3 TOWN HIGHWAY
- CLASS 4 TOWN HIGHWAY
- NFR NATIONAL FOREST ROAD
- BFH STATE FOREST HIGHWAY

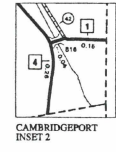
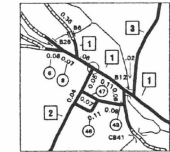
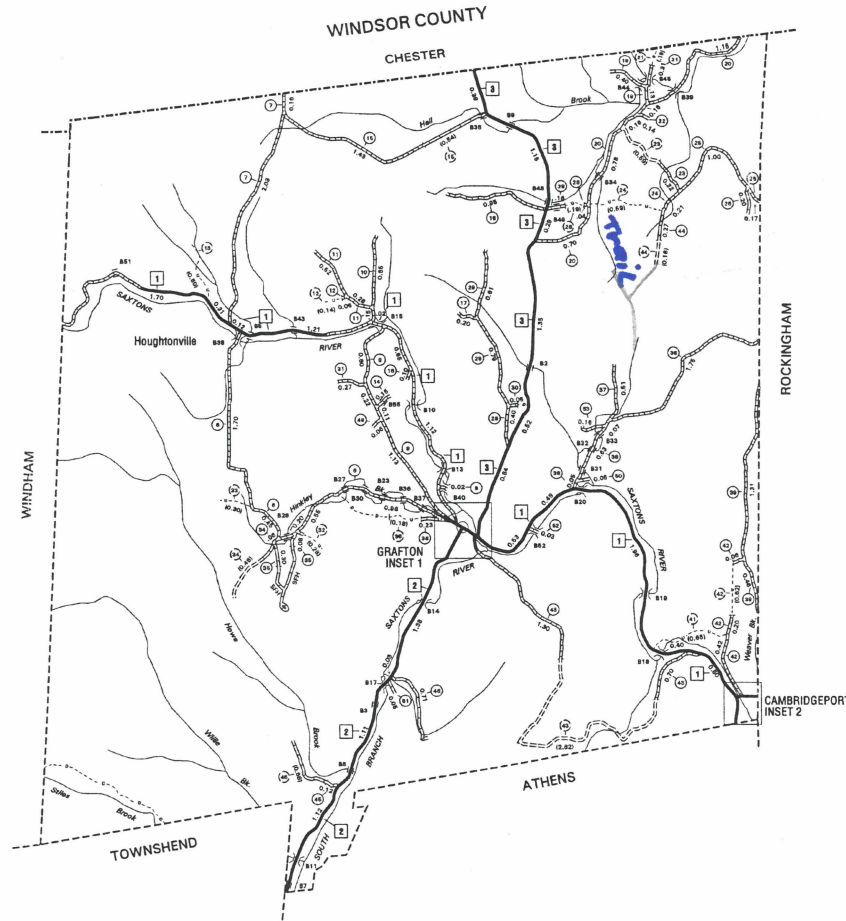
- BRIDGE OR CULVERT 4'-6"
- BRIDGE OR CULVERT 6'-20"
- BRIDGE GREATER THAN 20'
- COVERED BRIDGE

- ROAD SURFACE TYPES
- STATE PAVED
 - OTHER PAVED
 - STATE GRAVEL
 - OTHER GRAVEL
 - GRAVEL AND DRAINED
 - UNIMPROVED/PRIMITIVE

- POLITICAL SUBDIVISIONS
- STATE BOUNDARY
 - COUNTY BOUNDARY
 - TOWN BOUNDARY
 - CITY BOUNDARY
 - VILLAGE BOUNDARY
 - URBAN CONTACT BOUNDARY

- OTHER TRANSPORTATION
- RAILROAD
 - AIRPORT TERMINAL

- NATURAL FEATURES
- SINGLE LINE STREAM
 - OPEN WATER
 - ISLAND
- MISCELLANEOUS
- DAM

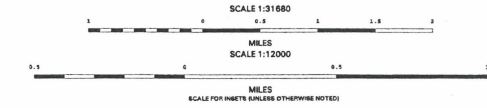


Approximately 1 mile
off Eastmen Road to
Anderson Road.



VERMONT GENERAL HIGHWAY MAP TOWN OF GRAFTON

PREPARED BY THE
VERMONT AGENCY OF TRANSPORTATION
PROGRAM DEVELOPMENT DIVISION
IN COOPERATION WITH
U.S. DEPARTMENT OF TRANSPORTATION
FEDERAL HIGHWAY ADMINISTRATION



DISCLAIMER
Highway and bridge data by Vermont Agency of Transportation, Division of Program Development. All other data from Vermont Center for Geographic Information.

E 488

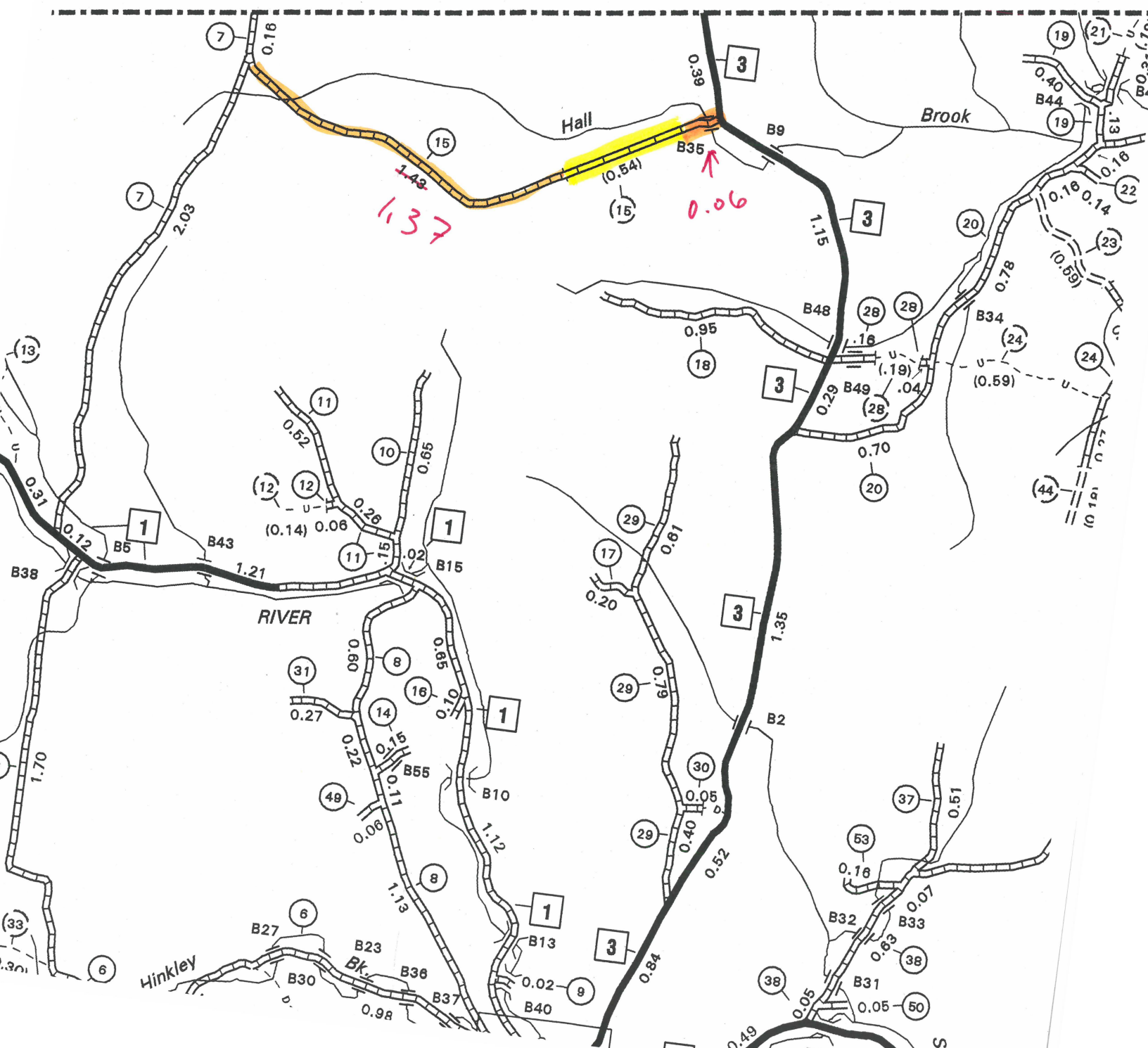
E 492 C

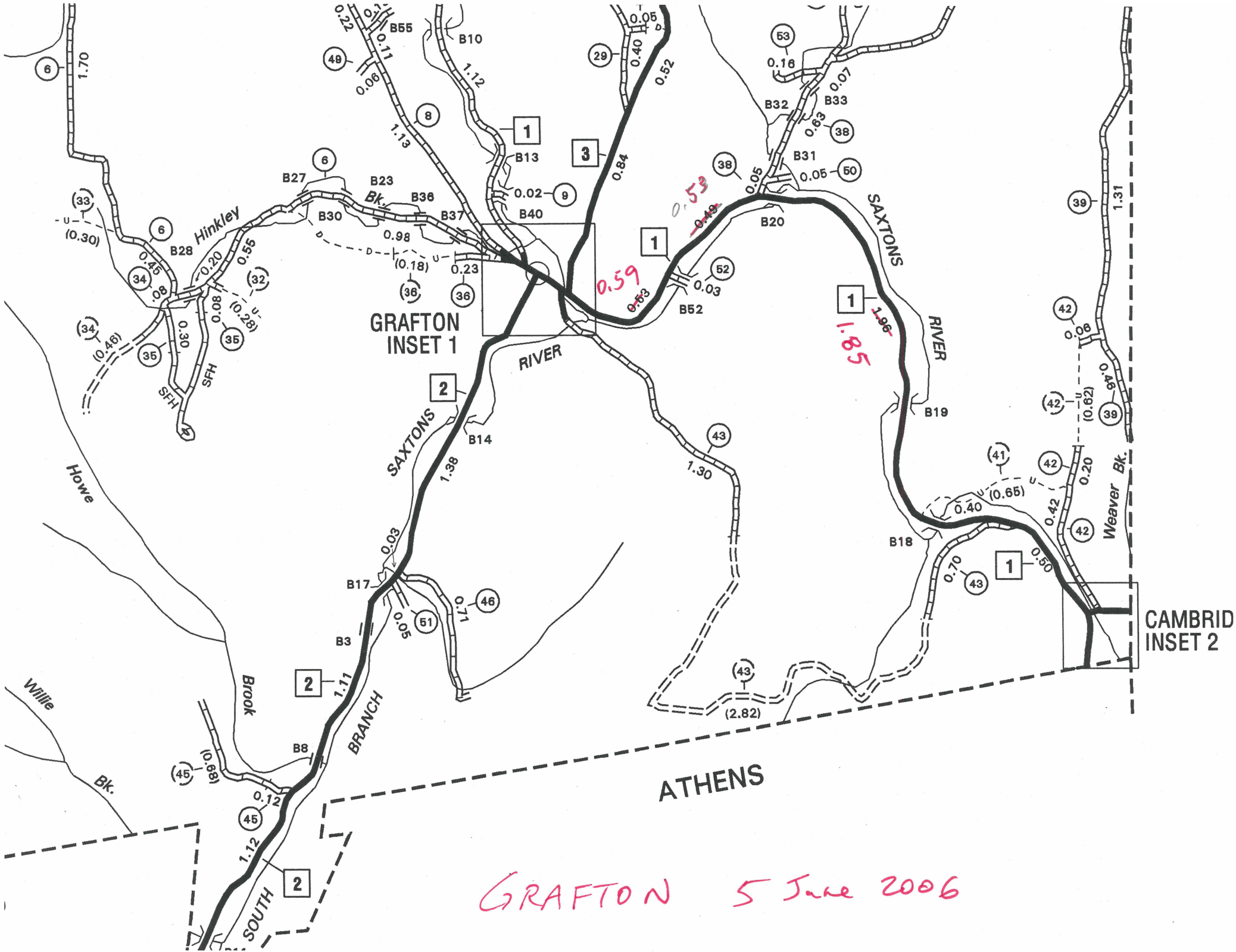
2 June 2006

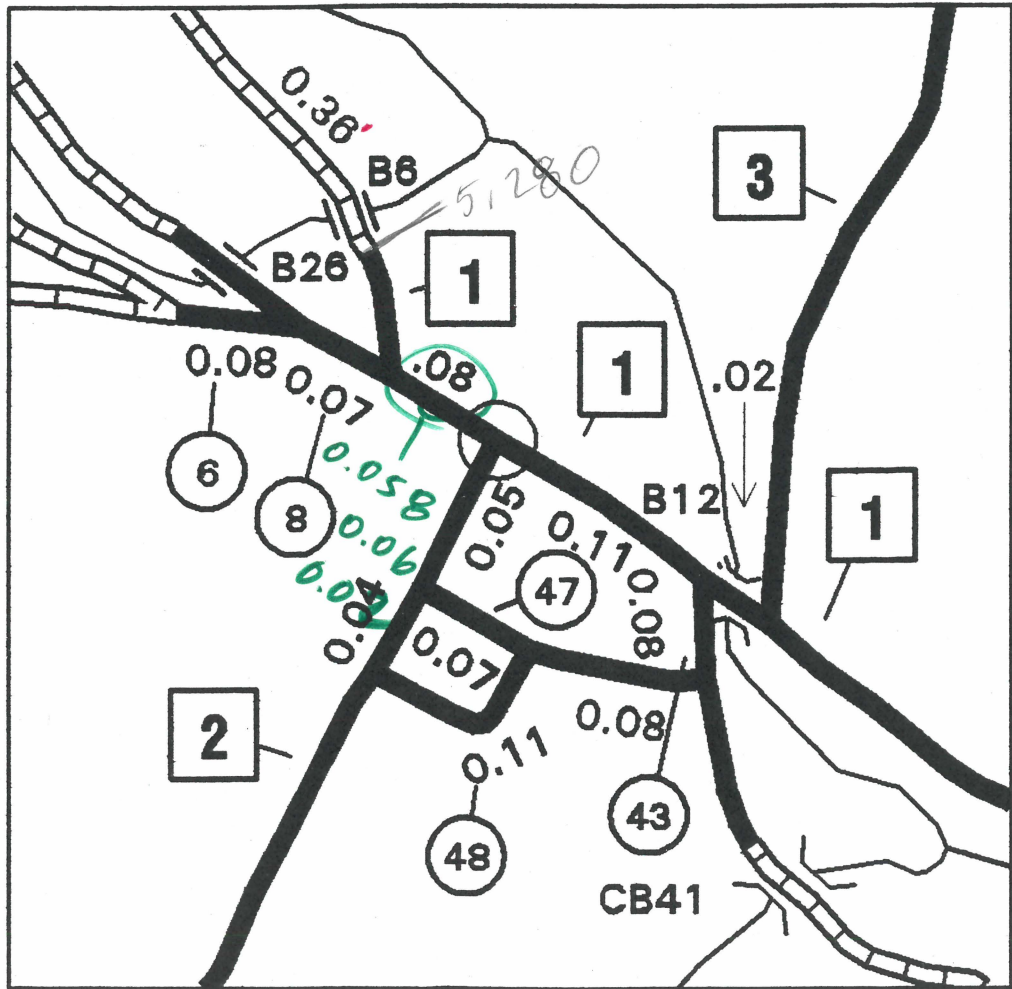
GRAFTON

WINDSOR COUNTY

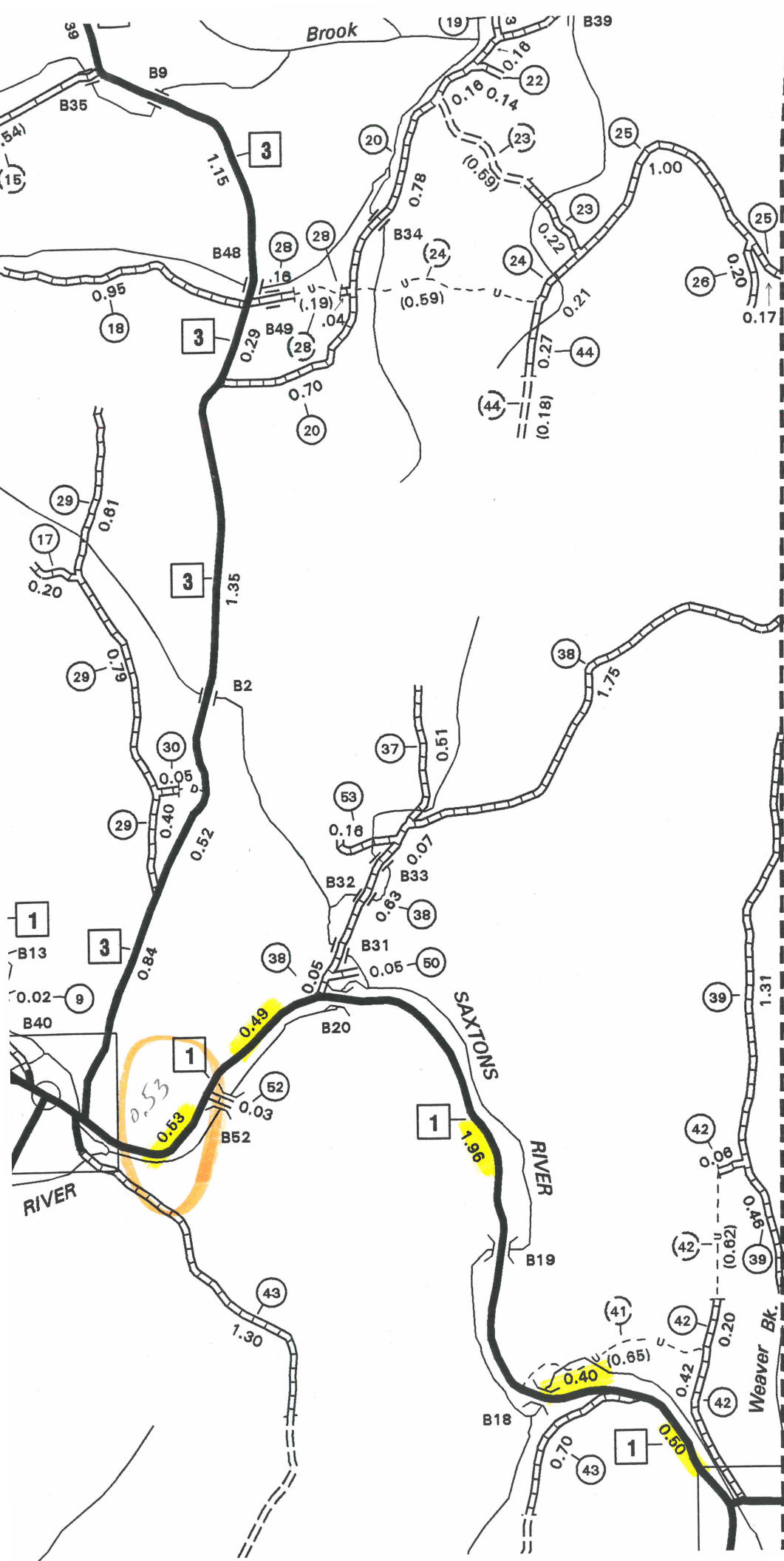
CHESTER







GRAFTON
INSET 1



ROCKINGHAM

CAMBRIDGEPORT
INSET 2



P.O. Box 180

TOWN OF GRAFTON
(802)843-2552

Main Street

June 9, 2006

State of Vermont
Policy & Planning Division-Mapping Unit
1 National Life drive, Drawer 33
Montpelier, VT 05633

Dear Sara,

I'm sorry my map was so misleading, and I did indeed use a stream. I guess I shrunk my map to small.

I have redone the map and highlighted the area on the map you sent me and hopefully it will be clear.

Sorry for the confusion.

Sincerely,

A handwritten signature in cursive script that reads "Jackie".

Jackie LeBlanc
Town Administrator



State of Vermont
Policy & Planning Division-Mapping Unit
1 National Life Drive, Drawer 33
Montpelier, VT 05633-5001
<http://www.aot.state.vt.us>

Agency of Transportation

Telephone: 802-828-2109
Fax: 802-828-2334
Email: sara.moulton@state.vt.us

June 7, 2006

Town Clerk, Town of Grafton
PO Box 180
Grafton, VT 05146

Dear Town Clerk:

In trying to map the change prompted by your 2006 Certificate of Highway Mileage, we have encountered several questions.

According to the certificate, Grafton wants to reclassify "Approximately one mile from Eastman Road to Anderson Road reclassified to a trail". The map that was included with the certificate was somewhat misleading in that it seemed to tie into a stream instead of TH-20 Eastman Road.

I have enclosed several maps to try to illustrate my questions. I am assuming you want to reclassify a road we currently have classified as Private which travels for 1.324 miles between Eastman and Anderson Roads.

The map submitted with the certificate also seemed to try to tie the new Legal Trail into TH-37 Bell Road, although on the map this leg also ended up connecting to a stream. Does Grafton want the new Legal Trail to tie into Bell Road? This will add 0.45 miles for a total of about 1.778.

According to the information we have (see the enclosed map containing an orthophoto) there is a private road near the end of TH-37 Bell Rd, but it does not actually connect to TH-37. If Grafton wants the new Legal Trail to extend to TH-37, should the trail connect directly to it?

We would appreciate any clarification you can provide so we can continue to process the town highway map. Feel free to mark up any of the enclosed maps.

Please let me know if you have any questions.

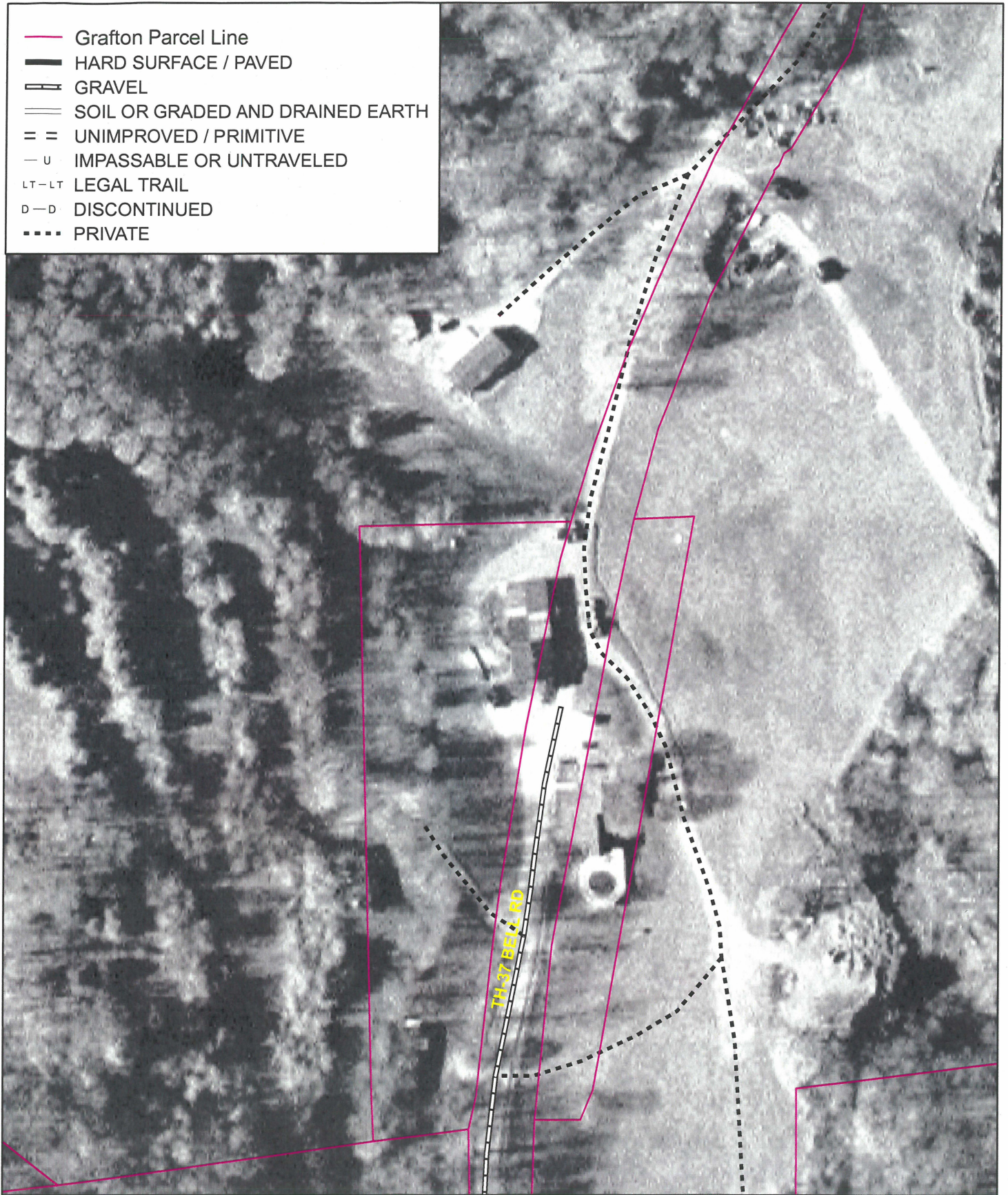
Sincerely,

Sara Moulton

Sara Moulton
Mapping & GIS Specialist



- Grafton Parcel Line
- HARD SURFACE / PAVED
- GRAVEL
- SOIL OR GRADED AND DRAINED EARTH
- UNIMPROVED / PRIMITIVE
- U IMPASSABLE OR UNTRAVELED
- LT—LT LEGAL TRAIL
- D—D DISCONTINUED
- PRIVATE



GRAFTON

Trail Between Eastman Rd and Anderson Rd

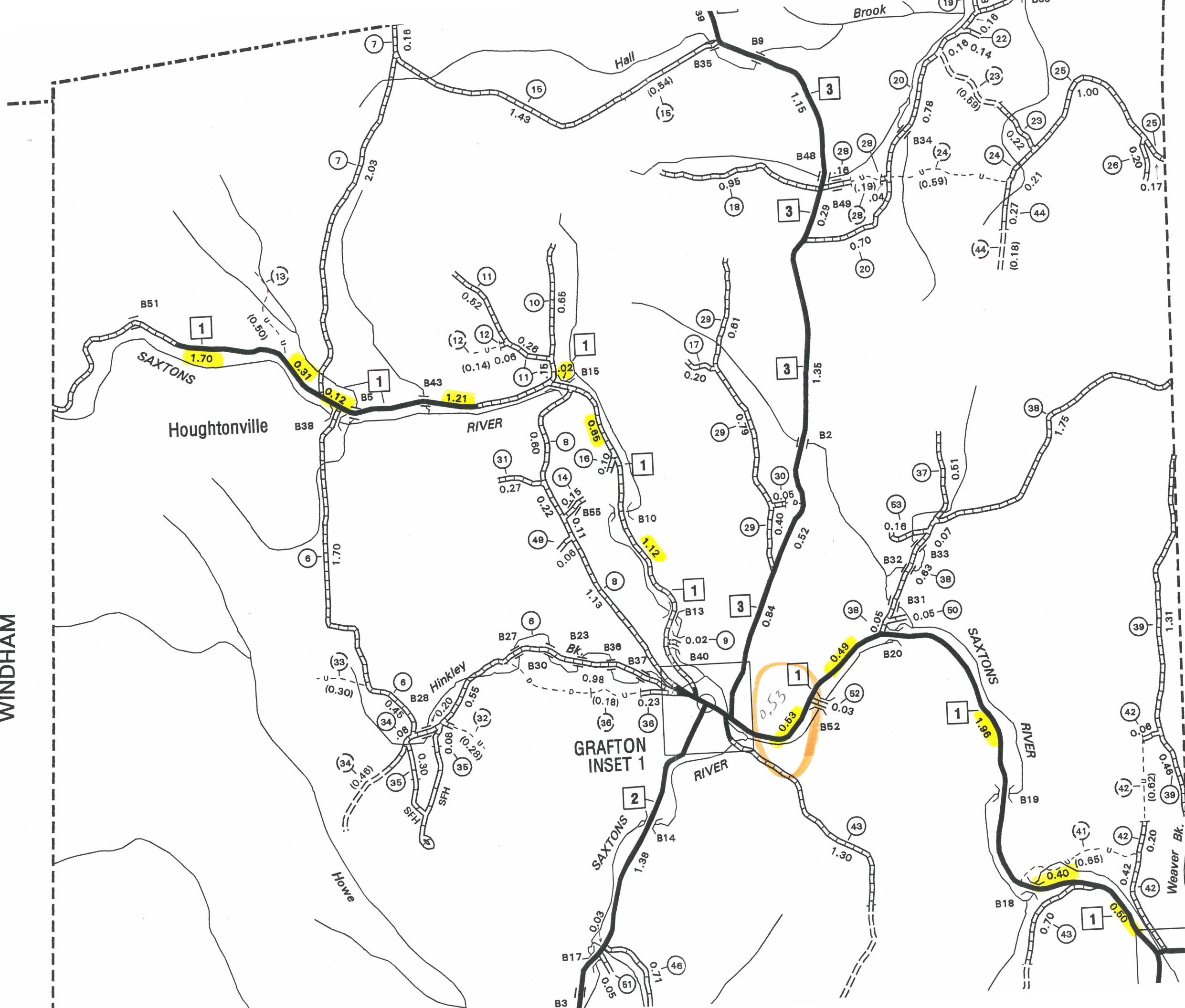
Mapping Unit
 Policy & Planning Division
 Vermont Agency of Transportation -- June 2006

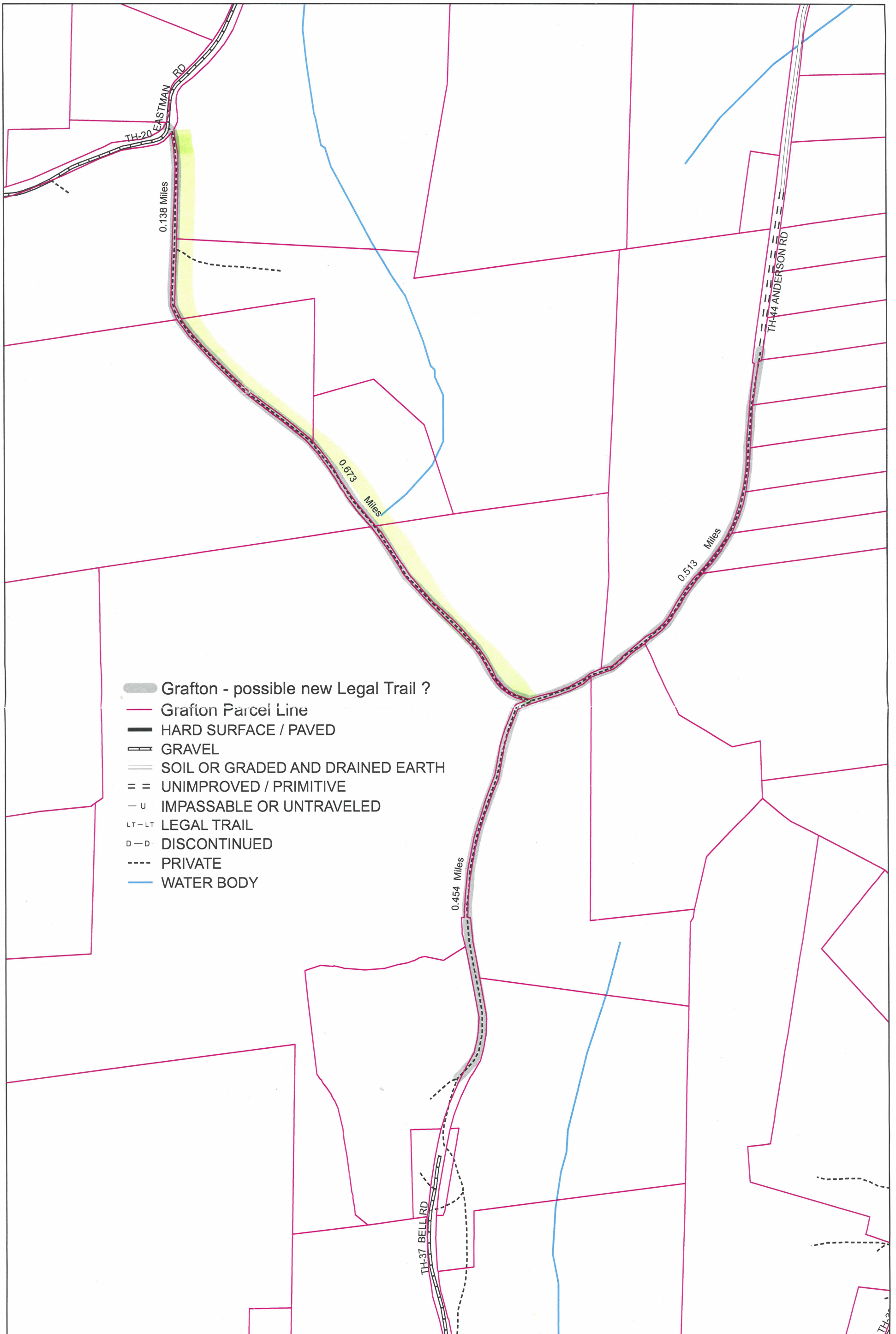
0 0.01 0.02 Miles

WINDHAM

ROCKINGHAM

CAMBRIDGEPORT
INSET 2





- Grafton - possible new Legal Trail ?
- Grafton Parcel Line
- HARD SURFACE / PAVED
- GRAVEL
- SOIL OR GRADED AND DRAINED EARTH
- UNIMPROVED / PRIMITIVE
- IMPASSABLE OR UNTRAVELED
- LEGAL TRAIL
- DISCONTINUED
- PRIVATE
- WATER BODY

GRAFTON

Trail Between Eastman Rd and Anderson Rd

Mapping Unit
 Policy & Planning Division
 Vermont Agency of Transportation -- June 2006

