

CERTIFICATE OF HIGHWAY MILEAGE
YEAR ENDING FEBRUARY 10, 2016

Fill out form, make and file copy with the Town Clerk, and mail ORIGINAL, before February 20, 2016 to: Vermont Agency of Transportation, Division of Policy, Planning and Intermodal Development, Mapping Section One National Life Drive, Montpelier, VT 05633.

We, the members of the legislative body of DUMMERSTON in WINDHAM County on an oath state that the mileage of highways, according to Vermont Statutes Annotated, Title 19, Section 305, added 1985, is as follows:

PART I - CHANGES TOTALS - Please fill in and calculate totals.

Table with 6 columns: Town Highways, Previous Mileage, Added Mileage, Subtracted Mileage, Total, Scenic Highways. Rows include Class 1, Class 2, Class 3, State Highway, Total, Class 1 Lane, Class 4, and Legal Trail.

* Mileage for Class 1 Lane, Class 4, and Legal Trail classifications are NOT included in total.

PART II - INFORMATION AND DESCRIPTION OF CHANGES SHOWN ABOVE.

- 1. NEW HIGHWAYS: Please attach Selectmen's "Certificate of Completion and Opening".
2. DISCONTINUED: Please attach SIGNED copy of proceedings (minutes of meeting).
3. RECLASSIFIED/REMEASURED: Please attach SIGNED copy of proceedings (minutes of meeting).
4. SCENIC HIGHWAYS: Please attach a copy of order designating/discontinuing Scenic Highways.

Total by S. Moulton 2/9/2016

IF THERE ARE NO CHANGES IN MILEAGE: Check box and sign below. []

PART III - SIGNATURES - PLEASE SIGN.

Selectmen/ Aldermen/ Trustees Signatures:

Handwritten signatures of Steve G. Goble and Zeke Coburn

T/C/V Clerk Signature:

Handwritten signature of T/C/V Clerk

Date Filed:

2/5/16

Please sign ORIGINAL and return it for Transportation signature.

AGENCY OF TRANSPORTATION APPROVAL:

Signed copy will be returned to T/C/V Clerk.

APPROVED:

Representative, Agency of Transportation

DATE:

5/12/2016

Received

FEB 08 2016

Policy, Planning & Intermodal
Development Division

Vermont Statutes Annotated

19 V.S.A. § 305. Measurement and inspection

§ 305. Measurement and inspection

(a) After reasonable notice to the selectboard, a representative of the agency may measure and inspect the class 1, 2, and 3 town highways in each town to verify the accuracy of the records on file with the agency. Upon request, the selectboard or their designee shall be permitted to accompany the representative of the agency during the measurement and inspection. The agency shall notify the town when any highway, or portion of a highway, does not meet the standards for its assigned class. If the town fails, within one year, to restore the highway or portion of the highway to the accepted standard, or to reclassify, or to discontinue, or develop an acceptable schedule for restoring to the accepted standards, the agency for purposes of apportionment under section 306 of this title shall deduct the affected mileage from that assigned to the town for the particular class of the road in question.

(b) Annually, on or before February 10, the selectboard shall file with the town clerk a sworn statement of the description and measurements of all class 1, 2, 3, and 4 town highways and trails then in existence, including any special designation such as a throughway or scenic highway. When class 1, 2, 3, or 4 town highways, trails, or unidentified corridors are accepted, discontinued, or reclassified, a copy of the proceedings shall be filed in the town clerk's office and a copy shall be forwarded to the agency.

(c) All class 1, 2, 3, and 4 town highways and trails shall appear on the town highway maps by July 1, 2015.

(d) At least 45 days prior to first including a town highway or trail that is not clearly observable by physical evidence of its use as a highway or trail and that is legally established prior to February 10, 2006 in the sworn statement required under subsection (b) of this section, the legislative body of the municipality shall provide written notice and an opportunity to be heard at a duly warned meeting of the legislative body to persons owning lands through which a highway or trail passes or abuts.

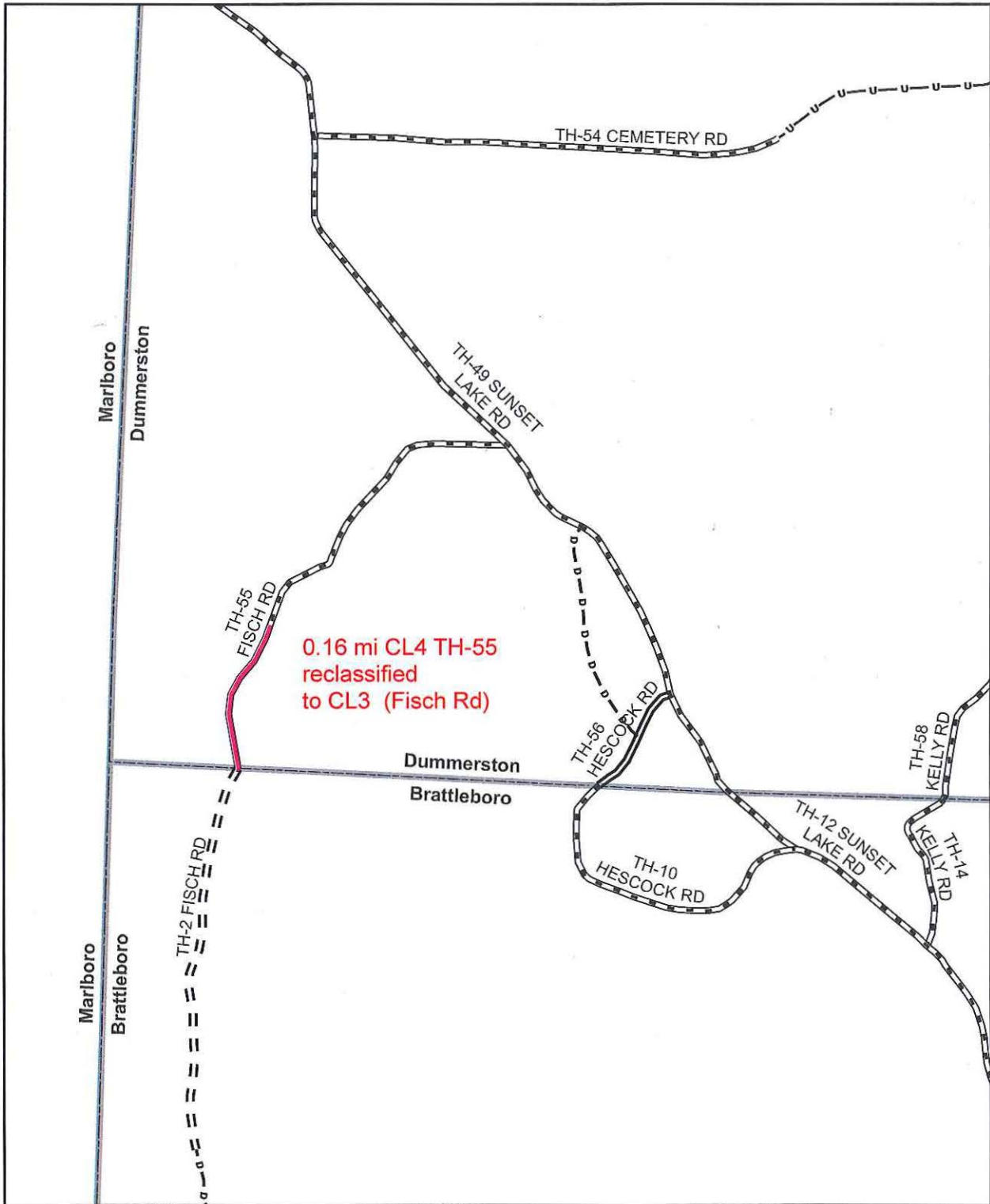
(e) The agency shall not accept any change in mileage until the records required to be filed in the town clerk's office by this section are received by the agency. A request by a municipality to the agency for a change in mileage shall include a description of the affected highway or trail, a copy of any surveys of the affected highway or trail, minutes of meetings at which the legislative body took action with respect to the changes, and a current town highway map with the requested deletions and additions sketched on it. A survey shall not be required for class 4 town highways that are legally established prior to February 10, 2006. All records filed with the agency are subject to verification in accordance with subsection (a) of this section.

(f) The selectboard of any town who are aggrieved by a finding of the agency concerning the measurement, description, or classification of a town highway may appeal to the transportation board by filing a notice of appeal with the executive secretary of the transportation board.

(g) The agency shall provide each town with a map of all of the highways in that town together with the mileage of each class 1, 2, 3, and 4 highway, as well as each trail, and such other information as the agency deems appropriate

Excerpt of 19 V.S.A. § 305 - *Measurement and inspection* from Vermont Statutes Online located at –
<http://legislature.vermont.gov/statutes/section/19/003/00305>

December 2015



Mileage Certificate Change DUMMERSTON

(CTCODE: 1305)

Mapping Section
 Division of Policy, Planning and Intermodal Development
 Vermont Agency of Transportation - February 2016



0 Miles 0.1



TOWN HWY. No.	LENGTH IN MILES CLASS 3	LENGTH IN MILES CLASS 4	TOWN HWY. No.	LENGTH IN MILES CLASS 3	LENGTH IN MILES CLASS 4
6	2.57		43	0.58	(0.22)
8	1.14		44	1.40	
9	1.28		45	1.50	(0.47)
10	0.50		46	0.80	
11	1.12	(0.25)	47	3.22	
12	0.05	(0.27)	48	1.18	
13	2.51		49	1.05	
14		(0.10)	50	2.01	
15		(0.05)	51	0.14	
16		0.14	52	0.12	
17	0.42		53	0.05	
18	2.21		54	0.54	(0.40)
19	0.56	(0.43)	55	0.64	(0.10)
20	1.48		56	0.13	
23	1.05		57	0.18	
24	0.55		58	1.09	
25	0.42		59	0.26	
26	0.31		60	0.14	
27	1.60		62	2.48	
28	0.96		64	0.01	
29	0.25		65	0.00	
30	1.78		66	0.37	
31	0.53		67	0.01	
33	0.85		69		(0.10)
34	0.15		71	0.04	(0.28)
35	1.50	(0.28)	72		
36	1.15		75	0.90	
37	2.88		76	0.18	
38	0.27		77	0.26	
40	1.41		78	0.33	
41	0.61				
		TOTAL	50.31	3.05	

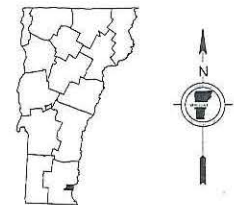
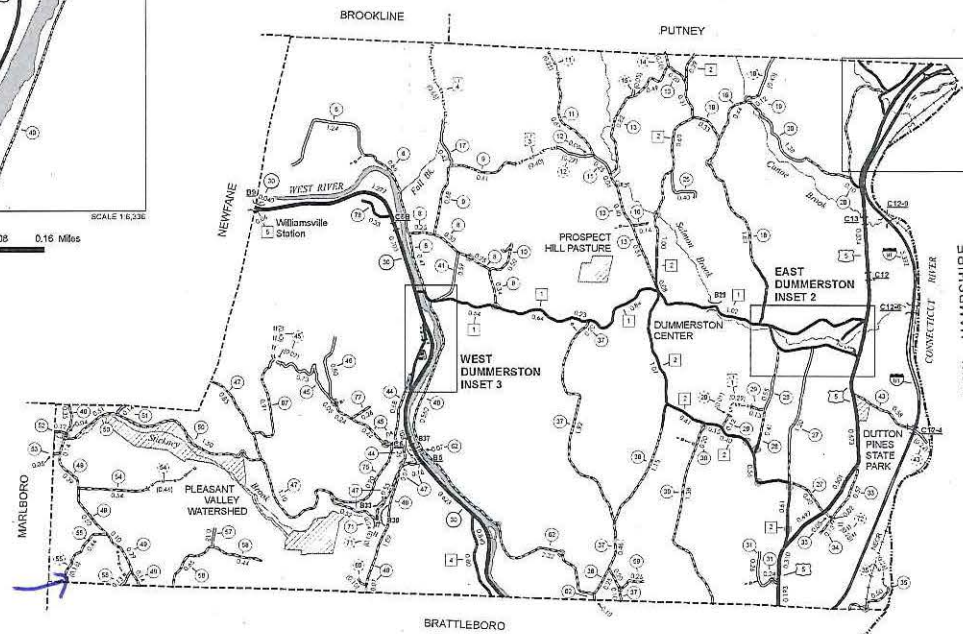
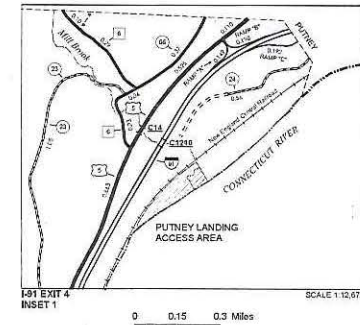
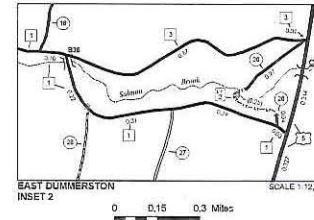
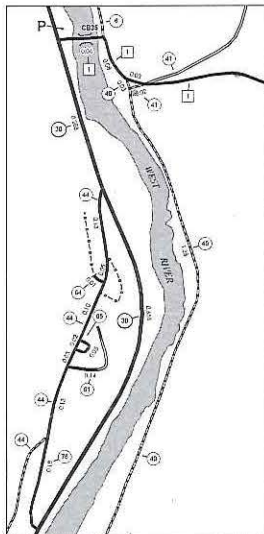
TOWN HWY. No.	LENGTH IN MILES "NOT UP TO STANDARD"	LEGAL TRAIL No.	LENGTH IN MILES LEGAL TRAIL
20	(0.01)	1	(0.29)
71	(0.13)	2	(0.25)
TOTAL	0.14	3	(0.46)
		TOTAL	1.60

*The sections of the town highways listed above are legally Class 3, but have been opened "Not Up To Standard" and are functionally Class 4 Town Highways.

MILEAGE SUMMARY

CLASS 2	LENGTH IN MILES	TOTAL CLASS 2
TH-1	4.450	
TH-2	5.480	
TH-3	3.850	
TH-4	3.600	
TH-5	3.000	
TH-6	3.650	
TOTAL CLASS 2	12.370	
CLASS 3	LENGTH IN MILES	TOTAL CLASS 3
TOTAL CLASS 3	50.31	
TOTAL TOWN	62.680	
STATE HIGHWAY	LENGTH IN MILES	TOTAL STATE HIGHWAY
VT-30	5.097	5.097
US HIGHWAY	LENGTH IN MILES	TOTAL US HIGHWAY
US-5	5.257	5.257
TOTAL STATE	10.354	
INTERSTATE	LENGTH IN MILES	TOTAL INTERSTATE
IS-91	5.392	5.392
INTERSTATE - Ramps	LENGTH IN MILES	TOTAL INTERSTATE - Ramps
IS-91	0.539	0.539
TOTAL INTERSTATE	5.931	

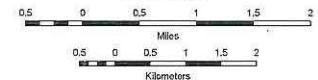
TOTAL TRAVELED HIGHWAYS, FEB. 10, 2015: 78,595
(Excludes Class 4, Legal Trail, and Undeveloped Corridor Mileage)



VERMONT GENERAL HIGHWAY MAP
Town of Dummerston
WINDHAM COUNTY

Transportation District #2
Prepared by the
Vermont Agency of Transportation
Division of Policy, Planning and Intermodal Development
in cooperation with
U.S. Department of Transportation
Federal Highway Administration

Map as of February 10, 2015
Map prepared June 10, 2015
SCALE 1:31,680



DISCLAIMER:
The untraveled highways (dashed town highways), discontinued highways, and legal trails (shown as those of which the Agency of Transportation has record, others may exist).
Highway and bridge data by the Agency of Transportation. Town street structures are shown from the Vermont Online Bridge & Culvert Inventory Tool (VBCIT) database. All other data from the Vermont Center for Geographic Information. Only named streams are shown.

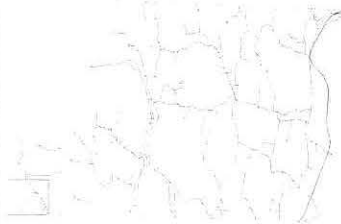
FEDERAL CLASSIFICATION IDENTIFIER
FAV URBAN ARTERIAL OR COLLECTOR
MA MAJOR ARTERIAL
MJC MAJOR COLLECTOR
MNC MINOR COLLECTOR
PA PRINCIPAL ARTERIAL

STATE BRIDGE OR CULVERT IDENTIFIER
SBI/CCI STATE BRIDGE OR CULVERT IDENTIFIER
TOWN BRIDGE OR CULVERT IDENTIFIER
TBI/TCI TOWN BRIDGE OR CULVERT IDENTIFIER

INTERSTATE OR DIVIDED HIGHWAY
STATE - HARD SURFACE OR PAVED
TOWN - HARD SURFACE OR PAVED
GRAVEL
SOIL OR GRADED AND DRAINED EARTH
UNIMPROVED OR PRIMITIVE
IMPASSIBLE OR UNTRAVELED
LEGAL TRAIL
DISCONTINUED
HIGHWAY CLASS CHANGE
RAILROAD
INACTIVE RAILROAD
NATIONAL FOREST ROAD
STATE FOREST HIGHWAY
PARK AND RIDE

PUBLIC LAND - GREEN MOUNTAIN NATIONAL FOREST
PUBLIC LAND - STATE COMMUNICIPAL
POLITICAL SUBDIVISIONS
STATE BOUNDARY
COUNTY BOUNDARY
TOWN BOUNDARY
VILLAGE BOUNDARY
URBAN COMPACT BOUNDARY
WATER BODY
STREAM OR BROOK
BRIDGE OR CULVERT
BRIDGE OR CULVERT F-20
BRIDGE OR CULVERT F-20
VBCIT BRIDGE
VBCIT CULVERT F-6

**Town of
Dummerston**



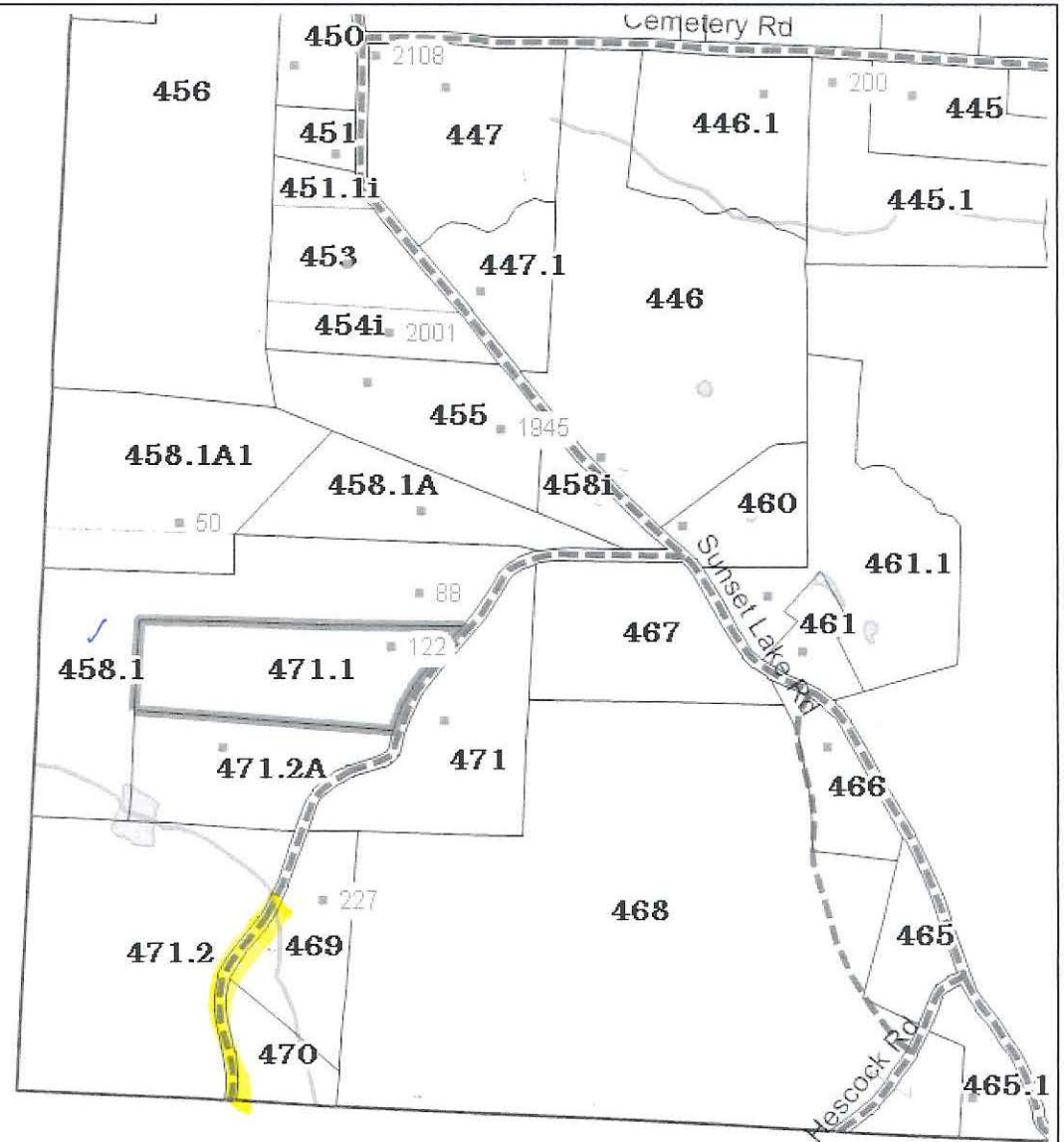
000471.100
122 Fisch Rd

Miner Kyle B &
122 Fisch Rd
Dummerston, VT 05301
11.1 acres Grand List
10.99 acres GIS

Map Features:
Parcel Lines
Building Locations
Road Centerlines
Streams & Ponds

The Town of Dummerston and CTI assume no liability as to the sufficiency, accuracy, or the user's interpretation of the data delineated herein. Current to April 1, 2014

This map is for assessment purposes only. It is not to be used for description, conveyance, or determination of legal title.



Map Scale 1:9,500
1 inch = 790 feet



Map Printed on
October 1, 2015



**SELECTBOARD PUBLIC HEARING
ON RECLASSIFICATION OF FISCH ROAD**

November 4, 2015

This hearing was called to order by Chair, Zeke Goodband at 5:00pm at the Community Center in Dummerston, Vermont.

Members present: Joe Cook, Steve Glabach, Zeke Goodband, Gurudharm Khalsa, Jerelyn Wilson

Also present: Lee Chamberlin, Karen Davis, Laurie Frechette, Pam McFadden, Tim Scott

The purpose of this hearing was to reclassify 0.16 mile of Fisch Road from Class 4 to Class 3. Tim Scott spoke in favor of the reclassification and praised the road crew's work and initiative. Karen Davis also spoke in favor of the reclassification. The Board read a letter from Sam Farwell, speaking against the reclassification.

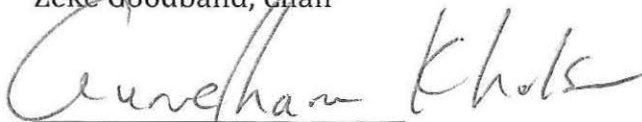
Steve moved to reclassify 0.16 mile of Fisch Road from a Class 4 to a Class 3 road. Joe seconded the motion. Gurudharm spoke against the motion. The motion passed 4-1.

Jerelyn offered to respond to Sam's letter.

The hearing was adjourned at 5:30pm.

November 10, 2015
Approved


Zeke Goodband, Chair


Gurudharm Khalsa, Clerk

Submitted by: Laurie Frechette, Selectboard Assistant

PUBLIC HEARING NOTICE

The Dummerston Selectboard will hold a public hearing on Wednesday, November 4, 2015 at 5:00pm at the Dummerston Community Center at 150 West Street, to receive comments on the proposed reclassification of Fisch Road from a Class 4 to a Class 3 road.

A site visit will take place at Fisch Road on Saturday, October 31, 2015 at 1:00pm.

Written comments may be sent to the Dummerston Selectboard at 1523 Middle Road, East Dummerston, VT 05346, or by email to selectboard@dummerston.org, on or before November 4, 2015.

Submitted by
Zeke Goodband, Chair
Dummerston Selectboard

~~Robert~~ Freeberg + Judith Fink
50 Fisch Rd.
Dummerston, VT 05301
Brendan Light
2048 W. Ohio St. ✓
Chicago, IL 60612

+ Dennis
Crystal Moore
88 Fisch Rd. ✓
Dummerston, VT 05301

Kyle Miner + Jennifer Lisai ✓
122 Fisch Rd.
Dummerston, VT 05301

Alan + Martha Armstrong ✓
126 Elm St.
Hatfield, MA 01038

R. Robert Harris
6075 Spring Canyon Rd. ✓
Ogden, UT 84403

Muriel Wolf
160 Chestnut St. ✓
Brattleboro, VT 05301

Steven Ferri's
23 Petting Place ✓
Brattleboro, VT 05301

✓ Roger Davis, Sr.
41 Orchard St.
Brattleboro, VT 05301

✓ Heseock Cabin Trust
2217 RT7
Cornwall, VT 05753