

District

**CERTIFICATE OF HIGHWAY MILEAGE**

**YEAR ENDING FEBRUARY 10, 2026**

Certcode 1304-0

Fill out form, make and file a copy with the Town Clerk, and submit the Mileage Certificate on or before February 20, 2026 to: Vermont Agency of Transportation, Division of Policy, Planning and Intermodal Development, Mapping Section via email to: aot.mileagecertificates@vermont.gov or if necessary via mail to: VTrans PPAID - Mapping Section, 219 North Main Street, Barre VT 05641.

We, the members of the legislative body of DOVER in WINDHAM County on an oath state that the mileage of highways, according to Vermont Statutes Annotated, Title 19, Section 305, added 1985, is as follows:

**PART I - CHANGES TOTALS - Please fill in and calculate totals.**

Town Highways	Previous Mileage	Added Mileage	Subtracted Mileage	Total	Scenic Highways
Class 1	0.000			0.000	0.000
Class 2	10.380			10.380	0.000
Class 3	49.17	.02		49.19	0.000
State Highway	5.547			5.547	0.000
<b>Total</b>	<b>65.097</b>			<b>65.117</b>	<b>0.000</b>
* Class 1 Lane	0.000			0.000	
* Class 4	2.57			2.57	0.000
* Legal Trail	11.07			11.07	

Initial  
PO

Totals entered by  
P. DeAndrea, VTrans  
2/4/2026

\* Mileage for Class 1 Lane, Class 4, and Legal Trail classifications are NOT included in total.

**PART II - INFORMATION AND DESCRIPTION OF CHANGES SHOWN ABOVE.**

- NEW HIGHWAYS:** Please attach Selectmen's "Certificate of Completion and Opening".
- DISCONTINUED:** Please attach SIGNED copy of proceedings (minutes of meeting).
- RECLASSIFIED/REMEASURED:** Please attach SIGNED copy of proceedings (minutes of meeting).  
+0.02 mi CL3 TH-15 (Cooper Hill Rd) added previously unmapped approach and remeasured
- SCENIC HIGHWAYS:** Please attach a copy of order designating/discontinuing Scenic Highways.

IF THERE ARE NO CHANGES RECORDED THIS YEAR: Place an X in the box and sign below.

**PART III - SIGNATURES - PLEASE SIGN.**

Signatures of Selectmen/ Aldermen/ Trustees:

Signature of T/C/V Clerk:

Date Filed: 2/4/2026

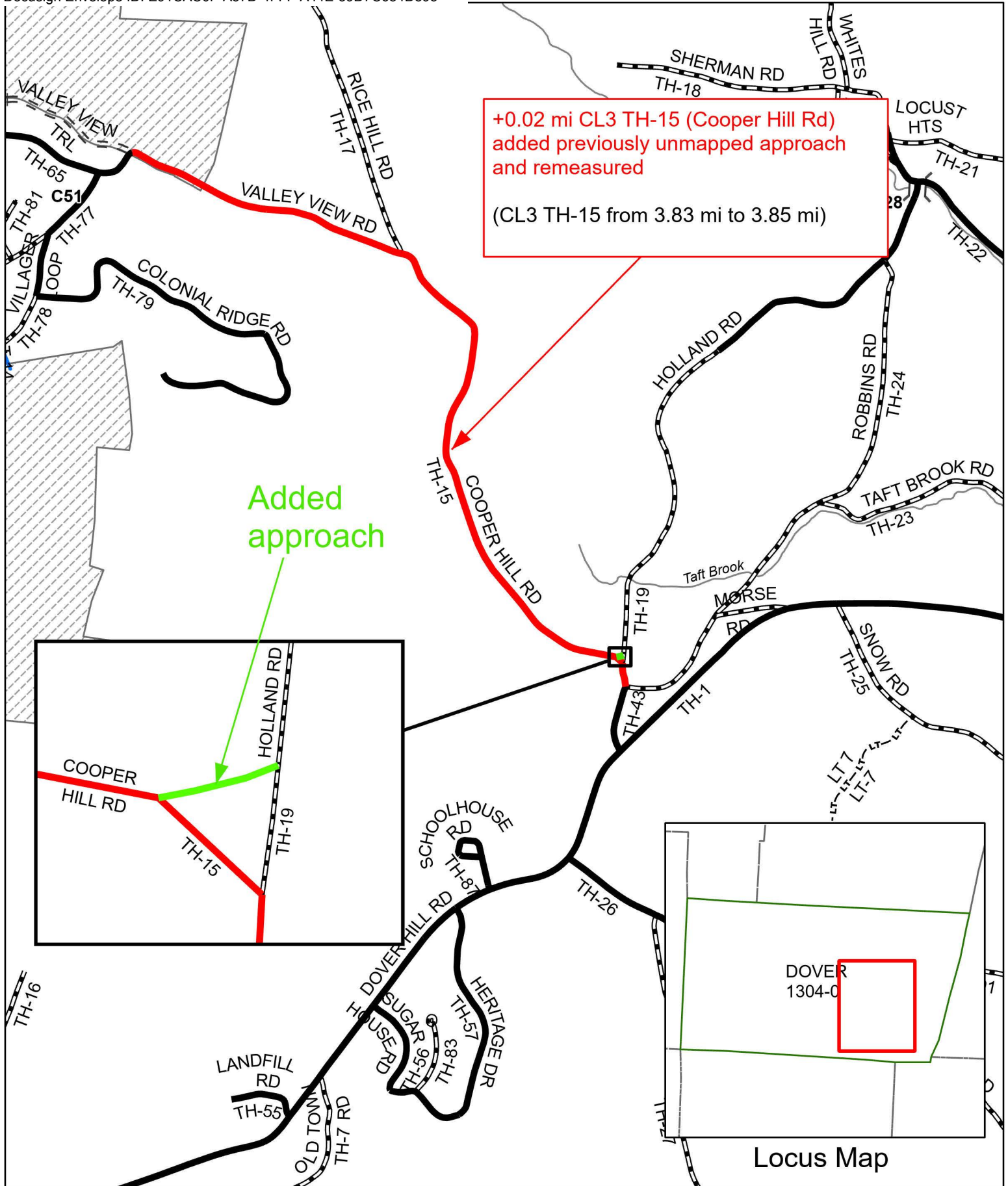
Please sign ORIGINAL and return it for Transportation signature.

**AGENCY OF TRANSPORTATION APPROVAL:** Signed copy will be returned to T/C/V Clerk.

APPROVED:

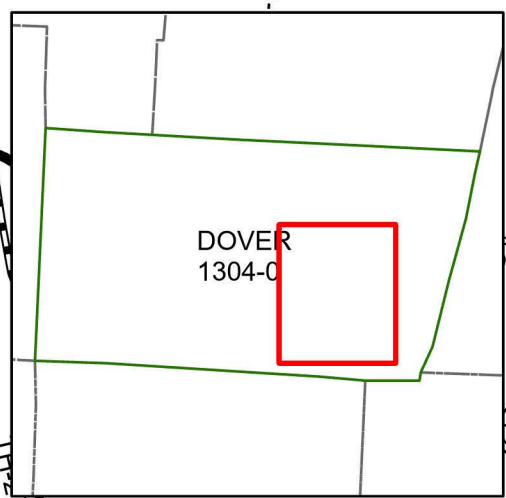
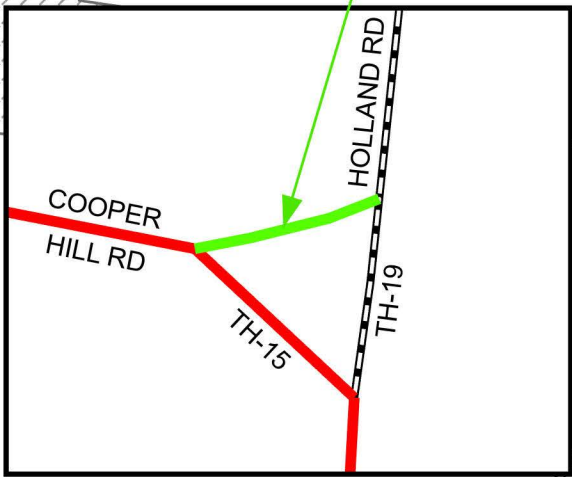
Johnathan Croft  
8B1F350F309C4C9  
Representative, Agency of Transportation

DATE: 2/4/2026



+0.02 mi CL3 TH-15 (Cooper Hill Rd)  
 added previously unmapped approach  
 and remeasured  
 (CL3 TH-15 from 3.83 mi to 3.85 mi)

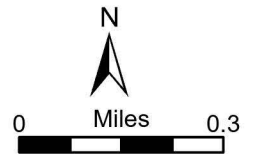
Added approach



**Mileage Certificate Changes 2026**

**DOVER TH-15**

(CTUA:1304-0)  
 (CERTCODE:1304-0)



**From:** [Andrew McLean](#)  
**To:** [DeAndrea, Pam](#)  
**Subject:** Re: Dover - intersection and mileage update for TH-15 (Cooper Hill Rd)  
**Date:** Monday, December 1, 2025 4:29:04 PM  
**Attachments:** [1.png](#)

---

**EXTERNAL SENDER: Do not open attachments or click on links unless you recognize and trust the sender.**

Sounds good, Pam!

---

---- On Wed, 26 Nov 2025 16:03:24 -0500 **DeAndrea, Pam**  
<[Pam.DeAndrea@vermont.gov](mailto:Pam.DeAndrea@vermont.gov)> wrote ---

Good afternoon,

I wanted to let you know that we made a change in the road data for TH-15 (Cooper Hill Rd) to account for the intersection being a Y and not a T (see image below). We can add this change to the 2026 Mileage Certificate before we send it to you in the new year. The change will be as follows:

**+0.02 mi CL3 TH-15 (Cooper Hill Rd) added previously unmapped approach**



Thank you!

Pam

**Pamela DeAndrea (she/her)** | AOT GIS Professional III  
Policy, Planning & Research Bureau / Mapping Section  
Policy, Planning & Intermodal Development Division  
Vermont Agency of Transportation  
219 N. Main Street | Barre, VT 05641  
802-793-7555 cell | [pam.deandrea@vermont.gov](mailto:pam.deandrea@vermont.gov)  
<https://vtrans.vermont.gov/>