

District 6
Certcode 1210-0

**CERTIFICATE OF HIGHWAY MILEAGE
YEAR ENDING FEBRUARY 10, 2026**

Fill out form, make and file a copy with the Town Clerk, and submit the Mileage Certificate on or before February 20, 2026 to: Vermont Agency of Transportation, Division of Policy, Planning and Intermodal Development, Mapping Section via email to: aot.mileagecertificates@vermont.gov or if necessary via mail to: VTrans PPAID - Mapping Section, 219 North Main Street, Barre VT 05641.

We, the members of the legislative body of MIDDLESEX in WASHINGTON County on an oath state that the mileage of highways, according to Vermont Statutes Annotated, Title 19, Section 305, added 1985, is as follows:

PART I - CHANGES TOTALS - Please fill in and calculate totals.

Town Highways	Previous Mileage	Added Mileage	Subtracted Mileage	Total	Scenic Highways
Class 1	0.000	—	—	0	0.000
Class 2	15.920	—	—	15.920	0.000
Class 3	32.19	—	.06	32.13	0.000
State Highway	17.002	—	—	17.002	0.000
Total	65.112	—	.06	65.052	0.000
* Class 1 Lane	0.000	—	—	—	
* Class 4	9.14	.22	—	9.36	0.000
* Legal Trail	3.51	—	.07	3.44	

Initial
PO

* Mileage for Class 1 Lane, Class 4, and Legal Trail classifications are NOT included in total.

PART II - INFORMATION AND DESCRIPTION OF CHANGES SHOWN ABOVE.

1. NEW HIGHWAYS: Please attach Selectmen's "Certificate of Completion and Opening".

2. DISCONTINUED: Please attach SIGNED copy of proceedings (minutes of meeting).

3. RECLASSIFIED/REMEASURED: Please attach SIGNED copy of proceedings (minutes of meeting).

-0.02 mi CL3 TH-39 (Upper and Lower Sunny Brook Rd) remeasured
-0.07 mi LT-6 remeasured; -0.01 mi CL3 TH-37 (Upper and Lower Bartnett Hill Rd) remeasured; +0.22 mi CL4 TH-37 remeasured; -0.03 mi CL3 TH-25 (Bolduc Rd) remeasured

4. SCENIC HIGHWAYS: Please attach a copy of order designating/discontinuing Scenic Highways.

IF THERE ARE NO CHANGES RECORDED THIS YEAR: Place an X in the box and sign below.

PART III - SIGNATURES - PLEASE SIGN.

Signatures of Selectmen/ Aldermen/ Trustees:

Signature of T/C/V Clerk:

Date Filed:

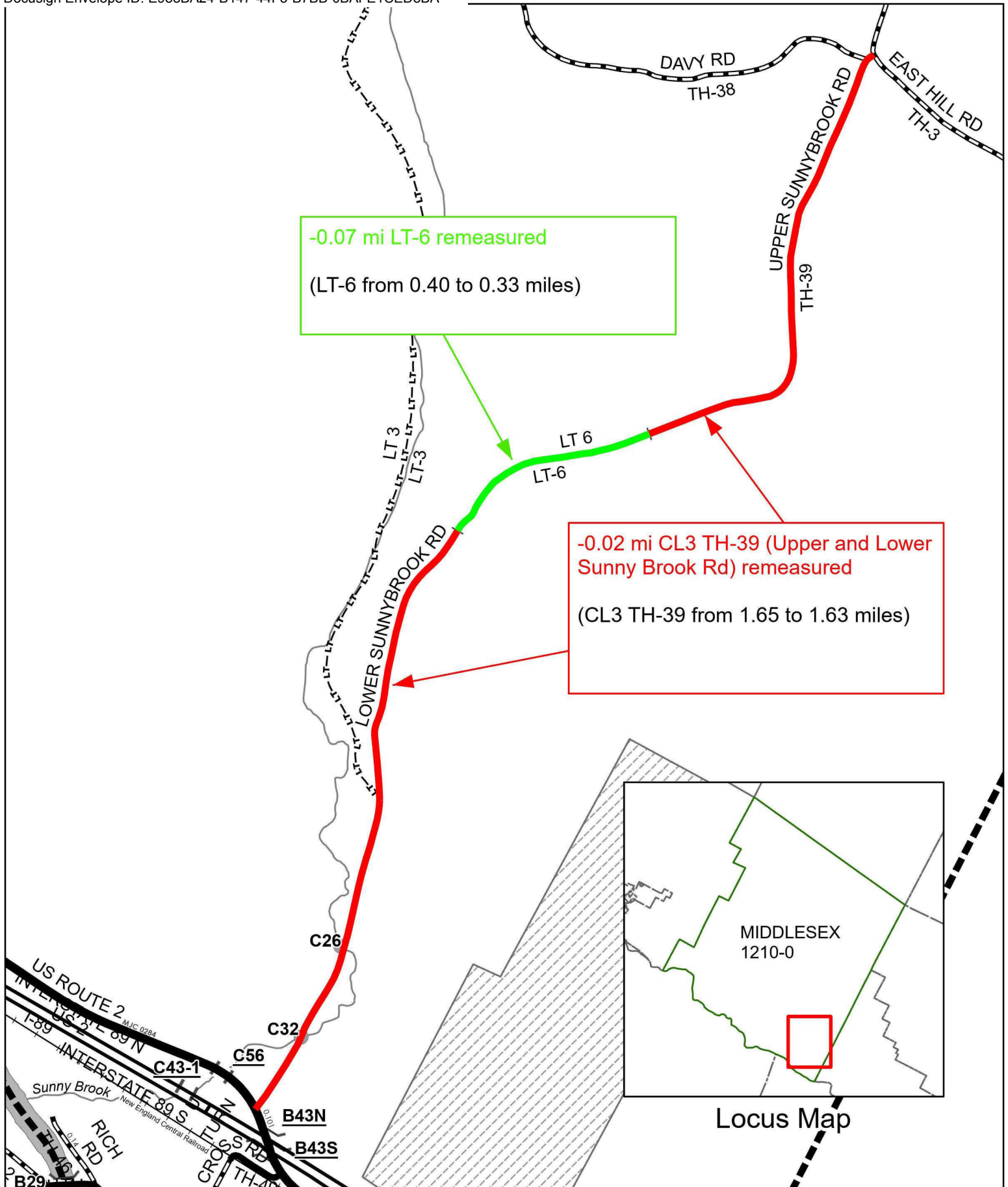
Please sign ORIGINAL and return it for Transportation signature.

AGENCY OF TRANSPORTATION APPROVAL: Signed copy will be returned to T/C/V Clerk.

APPROVED:

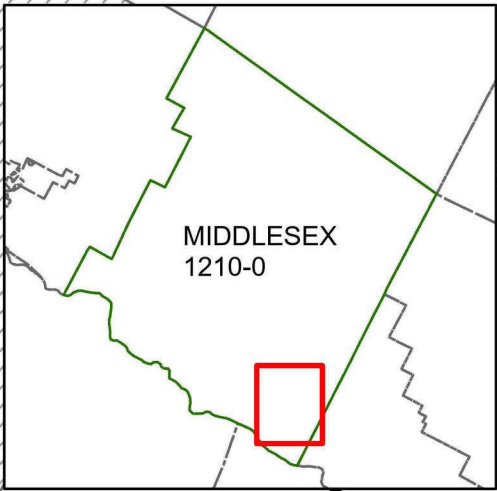
Johnathan Croft
Representative, Agency of Transportation

DATE: 3/5/2026



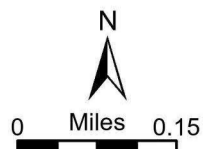
-0.07 mi LT-6 remeasured
(LT-6 from 0.40 to 0.33 miles)

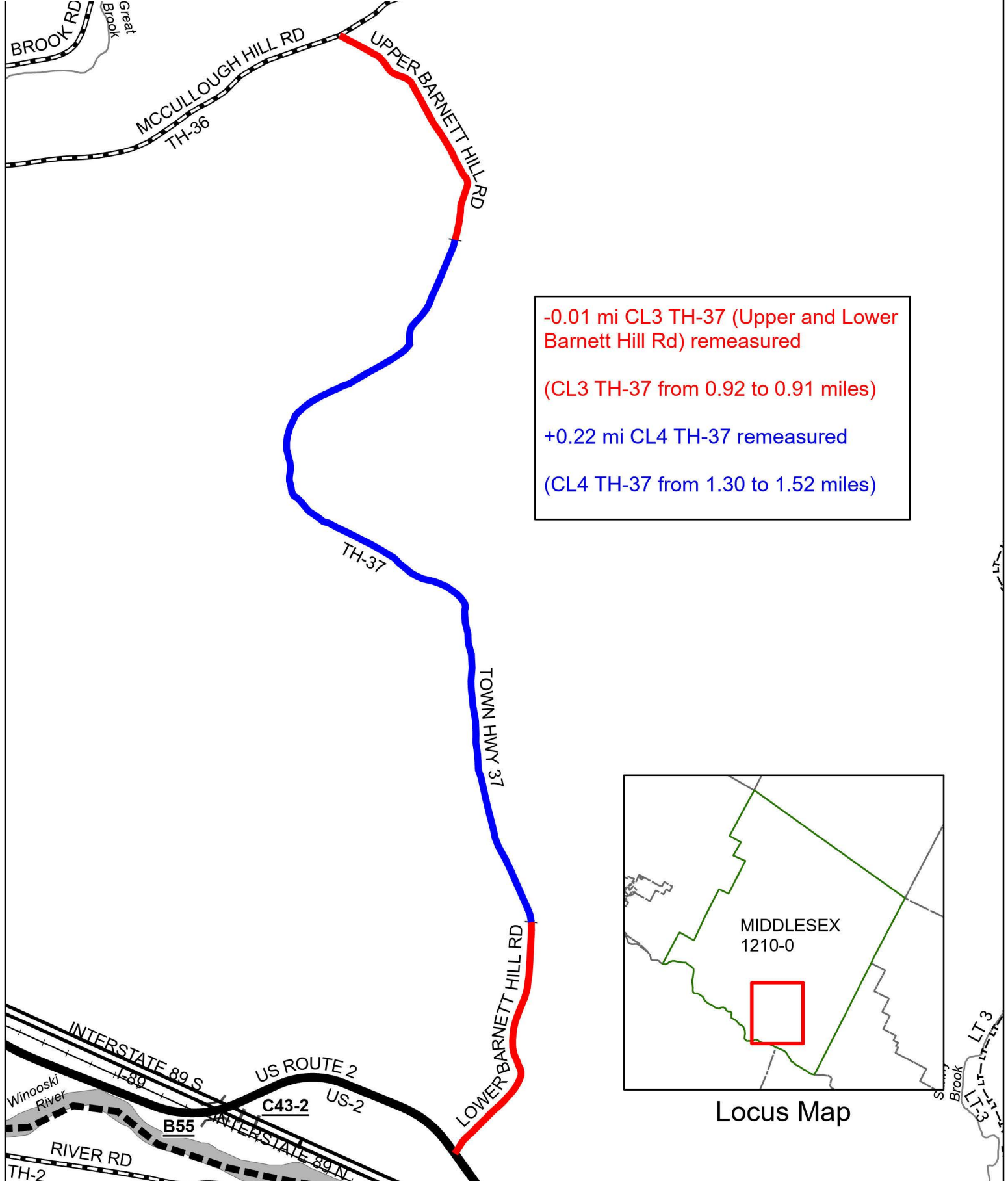
-0.02 mi CL3 TH-39 (Upper and Lower Sunny Brook Rd) remeasured
(CL3 TH-39 from 1.65 to 1.63 miles)



Mileage Certificate Changes 2026
MIDDLESEX LT-6 AND TH-39

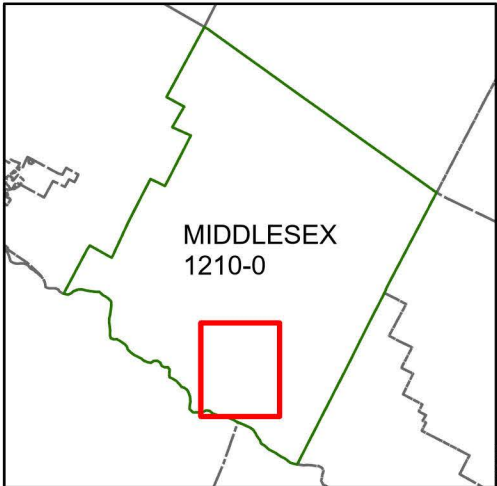
(CTUA:1210-0)
(CERTCODE:1210-0)





-0.01 mi CL3 TH-37 (Upper and Lower Barnett Hill Rd) remeasured
 (CL3 TH-37 from 0.92 to 0.91 miles)

+0.22 mi CL4 TH-37 remeasured
 (CL4 TH-37 from 1.30 to 1.52 miles)

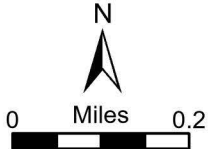


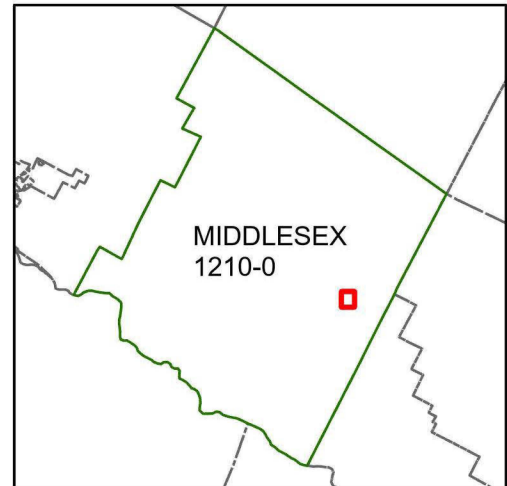
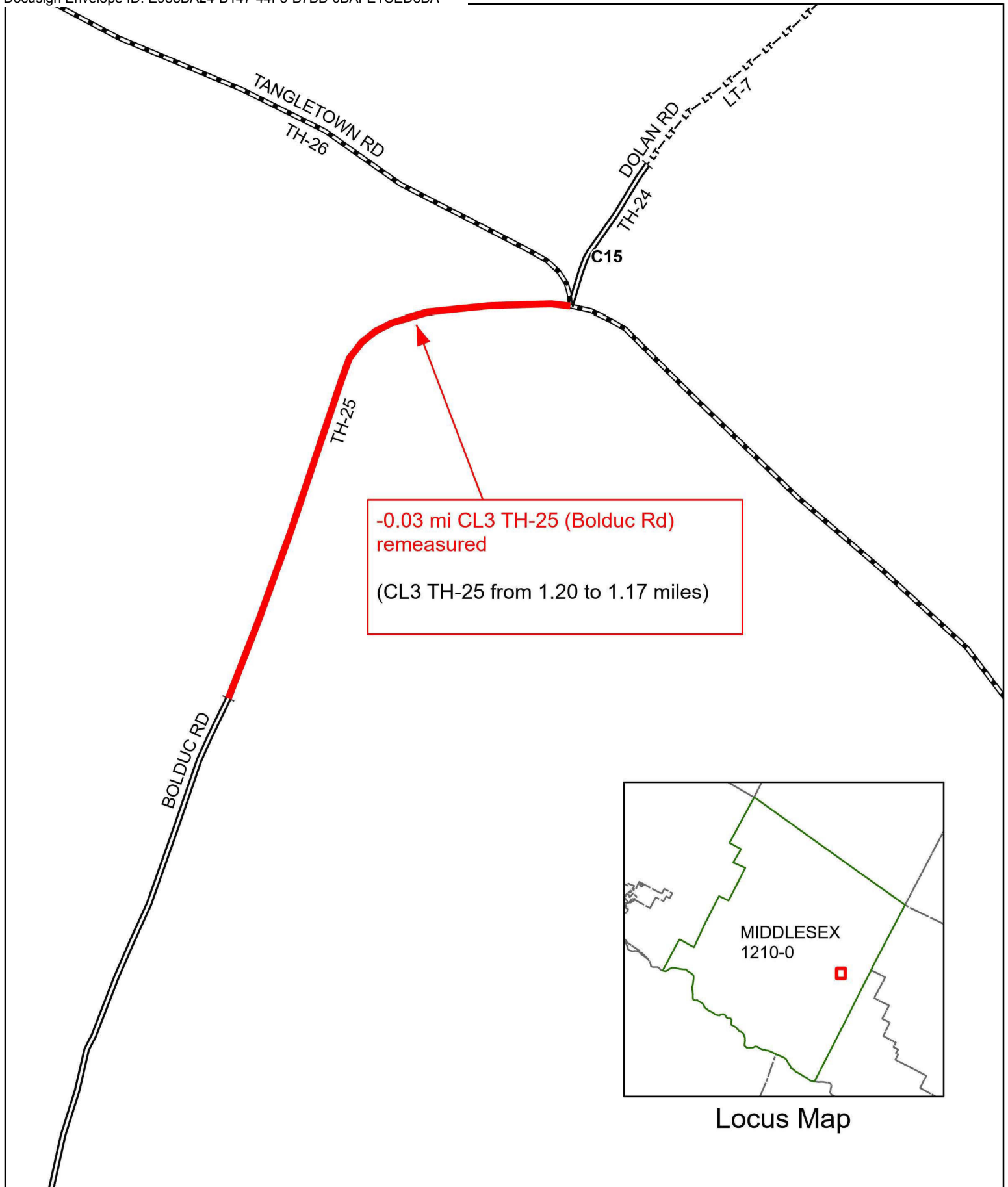
Locus Map

Mileage Certificate Changes 2026
MIDDLESEX TH-37

(CTUA:1210-0)
 (CERTCODE:1210-0)

Mapping Section
 Highway Division
 Vermont Agency of Transportation -- March 4, 2026





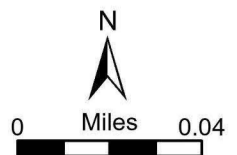
Locus Map

Mileage Certificate Changes 2026

MIDDLESEX TH-25

(CTUA:1210-0)
(CERTCODE:1210-0)

Mapping Section
Highway Division
Vermont Agency of Transportation -- December 23, 2025



From: [DeAndrea, Pam](#)
To: eric.metivier@middlesexvermont.org; clerk@middlesexvermont.org
Subject: TH-37 (Class 3/Class 4 break)
Date: Thursday, December 11, 2025 2:36:00 PM
Attachments: [image001.png](#)

Good afternoon Eric,

We found another issue in Middlesex that we will add to the 2026 Mileage Certificate. The Class 3/Class 4 break for TH-37 (Upper Barnett Hill Rd) should be at the turnaround (where the orange dot is in the image below). We have made this adjustment in our data, which results in the following mileage updates for TH-37, which we will add to the certificate:

-0.01 mi CL3 TH-37 (Upper Barnett Rd) remeasured
+0.22 mi CL4 TH-37 (Upper Barnett Rd) remeasured



Thank you and let me know if you have any questions,

Pam

Pamela DeAndrea (she/her) | AOT GIS Professional III
Policy, Planning & Research Bureau / Mapping Section
Policy, Planning & Intermodal Development Division

Vermont Agency of Transportation
219 N. Main Street | Barre, VT 05641
802-793-7555 cell | pam.deandrea@vermont.gov
<https://vtrans.vermont.gov/>

From: eric.metivier@middlesexvermont.org
To: [DeAndrea, Pam; clerk@middlesexvermont.org](mailto:DeAndrea_Pam; clerk@middlesexvermont.org)
Subject: RE: TH-39 (Lower & Upper Sunny Brook Rd) needing remeasure and TH-25 (Bolduc Rd) question
Date: Friday, November 14, 2025 9:40:20 AM
Attachments: [image001.png](#)
[image002.png](#)
[image003.png](#)
[image004.png](#)
[image005.png](#)
[image006.png](#)
[image007.png](#)

EXTERNAL SENDER: Do not open attachments or click on links unless you recognize and trust the sender.

Correct the orange dot is the where we stop maintaining.

Best

Eric Metivier, Road Foreman
Town of Middlesex
5 Church Street, Middlesex, VT 05602
802.752.5092 Cell | 802.229.0838 Shop

From: DeAndrea, Pam <Pam.DeAndrea@vermont.gov>
Sent: Friday, November 14, 2025 9:10 AM
To: eric.metivier@middlesexvermont.org; clerk@middlesexvermont.org
Subject: TH-39 (Lower & Upper Sunny Brook Rd) needing remeasure and TH-25 (Bolduc Rd) question

Hi Eric,

Thank you so much again. I made an error in the remeasure value for TH-39. That will be as follows:

-0.02 CL3 TH-39 (Lower and Upper Sunny Brook Rds) – mileage change from 1.65 to 1.63

I also have one more verification for you. I think we have the Class 3/Class 4 break for TH-25 (Bolduc Rd) in the wrong location. We have it at the arrow in the image below, but can you verify if it is at the orange dot? It looks like maintenance ends there just past the driveway to the west.

Let us know and thank you!



Pam

Pamela DeAndrea (she/her) | AOT GIS Professional III
Policy, Planning & Research Bureau / Mapping Section
Policy, Planning & Intermodal Development Division
Vermont Agency of Transportation
219 N. Main Street | Barre, VT 05641

From: [DeAndrea, Pam](#)
To: "eric.metivier@middlesexvermont.org"; clerk@middlesexvermont.org
Subject: RE: Middlesex LT-6 and TH-39 (Lower & Upper Sunny Brook Rd) needing remeasure
Date: Thursday, November 13, 2025 3:36:00 PM
Attachments: [image001.png](#)
[image002.png](#)
[image003.png](#)
[image004.png](#)
[image005.png](#)
[image006.png](#)

Thank you so much Eric,

We will make this change and update for the next mileage certificate cycle and preload the certificate with the changes.

Best,

Pam

Pamela DeAndrea (she/her) | AOT GIS Professional III
Policy, Planning & Research Bureau / Mapping Section
Policy, Planning & Intermodal Development Division
Vermont Agency of Transportation
219 N. Main Street | Barre, VT 05641
802-793-7555 cell | pam.deandrea@vermont.gov
<https://vttrans.vermont.gov/>

From: eric.metivier@middlesexvermont.org <eric.metivier@middlesexvermont.org>
Sent: Thursday, November 13, 2025 1:30 PM
To: DeAndrea, Pam <Pam.DeAndrea@vermont.gov>; clerk@middlesexvermont.org
Subject: RE: Middlesex LT-6 and TH-39 (Lower & Upper Sunny Brook Rd) needing remeasure

EXTERNAL SENDER: Do not open attachments or click on links unless you recognize and trust the sender.

You are correct in that we maintain to house 190 on the lower side and the trail head witch is #150 on the upper side.

So we agree with your findings.

Thank You

Eric Metivier, Road Foreman
Town of Middlesex
5 Church Street, Middlesex, VT 05602
802.752.5092 Cell | 802.229.0838 Shop

From: DeAndrea, Pam <Pam.DeAndrea@vermont.gov>
Sent: Thursday, November 13, 2025 12:13 PM
To: clerk@middlesexvermont.org; eric.metivier@middlesexvermont.org
Subject: Middlesex LT-6 and TH-39 (Lower & Upper Sunny Brook Rd) needing remeasure

Good morning,

I have another question for you.

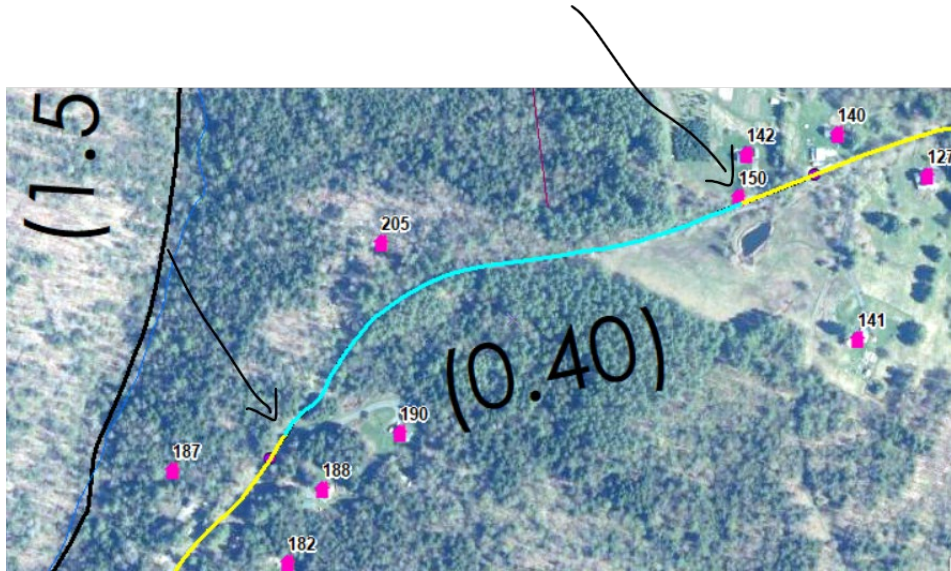
We think we have found an error in the mileage and break locations for TH-39 (Upper and Lower Sunny Brook Rd) and LT-6 in Middlesex. Currently LT-6 is mapped from, house # 140 to house # 188, but looking at the satellite imagery, it looks like the road may be maintained up to house #190 and #150 where the black arrows and blue line show in the image below. In the second image, I have a zoomed in view of the intersection by house #190. Can you confirm these two starting locations for LT-6 for us and approve us editing our road data, which would change the mileage somewhat for both TH-39 and LT-6?

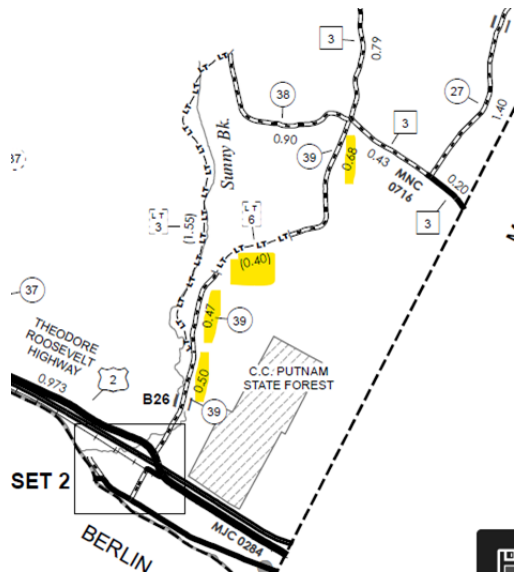
When looking at the attached inventory for TH-39 and the record of mileage changes from 1961-1974 in the rest of the images below, the mileages do not match what we have on the Town Highway Map for both TH-39 and LT-6. The total mileage based on the change in 1961 due to construction of US-2, was 1.96, but the total mileage on the map is 2.05 so I think the 0.09 that was deducted from the southern piece may have ended up in the untraveled section. In between 1970 and 1974, the mileage of the untraveled section went from 0.31 to 0.40.

In summary, if we remeasure the mileage as follows, the mileage for TH-39 and LT-6 should match historical records and the imagery. Let us know if the Town agrees and we can preload this change in the upcoming certificate cycle.

- 0.07 CL3 TH-39 (Lower and Upper Sunny Brook Rds) – mileage change from 1.65 to 1.58
- 0.07 Legal Trail LT-6 – mileage change from 0.40 to 0.33

Let me know if the town would agree with this.





1961:

T	38	2.00	0.90	1.10	PORTION UNTR.
				0.09	SHORTENED DUE TO INT. CONST.
T	39	1.37	1.96	0.68	PORTION NOW TRAVELLED

1970:

T	39	1.96	1.65	0.31	NOW UNTRAVELED
---	----	------	------	------	----------------

1974:

T	39	No change			0.40 miles of untr. now Class 4.
---	----	-----------	--	--	----------------------------------

Thank you!

Pam

Pamela DeAndrea (she/her) | AOT GIS Professional III
 Policy, Planning & Research Bureau / Mapping Section
 Policy, Planning & Intermodal Development Division
 Vermont Agency of Transportation
 219 N. Main Street | Barre, VT 05641
 802-793-7555 cell | pam.deandrea@vermont.gov
<https://vtrans.vermont.gov/>

FORM 6 HPS REV. 1971

ROAD INVENTORY FORM

VERMONT AGENCY OF TRANSPORTATION
PLANNING DIVISION
MAPPING AND ROAD INVENTORY SECTION

PARTY CHIEF Jay H. Kilton TOWN Middlesex
 RECORDER DAVID BREDANO COUNTY Wash HWY. DIST. NO. 6
 TOWN OFFICIAL GARY LAMMELL ROAD SYSTEM & NO. T-39
 TITLE RIC SHEET NO. 1 OF 2 DATE 7/11/89

SURFACE TYPE & WIDTH	SHOULDER TYPE & WIDTH		SIDEWALK TYPE & WIDTH		DITCHES	CONDITION	ROAD CLASS	REMARKS
	LT.	RT.	LT.	RT.				
								UPPER <u>Sunny Brook</u>
								Htr 041
								H 038
E-18								033
								H 031
								TS 26 8' multiplat 027
								Htr 024
								015 H
								8' multiplat squared 02 spans 012
								010 H
								Htr 008
								H 005 Htr
								002 Htr
E-24								U.S. 2 000

U.S. 2

