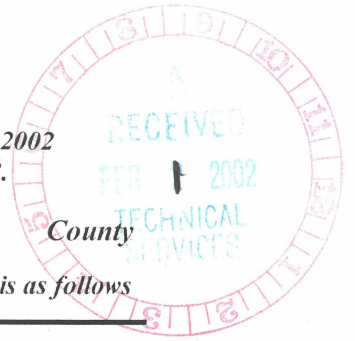


CERTIFICATE OF HIGHWAY MILEAGE
YEAR ENDING FEBRUARY 10, 2002

Fill out form, make and file copy with the Town Clerk, and mail ORIGINAL, before February 20, 2002 to: VT Agency of Transportation, Technical Services Division, Drawer 33, Montpelier, VT 05633.

We, the Selectmen or Aldermen or Trustees of MIDDLESEX in WASHINGTON County on an oath state that the mileage of highways, according to Title 19, V.S.A, Sec #305, added 1985, is as follows



PART I - CHANGES TOTALS - Please fill in and calculate totals.

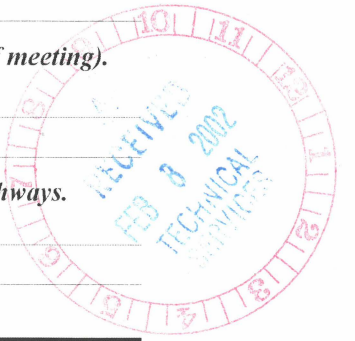
Table with 6 columns: Town Highways, Previous Mileage, Added Mileage, Subtracted Mileage, Total, Scenic Highways. Rows include Class 1, Class 1 Lane, Class 2, Class 3, State Highway, Class 4, and Total.

Handwritten note: Addition and subtraction done by Mike Kling 2/11/02

* Class 1 Lane Mileage and Class 4 is NOT included in total.

PART II - INFORMATION AND DESCRIPTION OF CHANGES SHOWN ABOVE.

- 1. NEW HIGHWAYS: Please attach Selectmen's "Certificate of Completion and Opening".
2. DISCONTINUED: Please attach SIGNED copy of proceedings (minutes of meeting).
3. RECLASSIFIED/REMEASURED: Please attach SIGNED copy of proceedings (minutes of meeting).
4. SCENIC HIGHWAYS: Please attach a copy of order designating/discontinuing Scenic Highways.



IF THERE ARE NO CHANGES IN MILEAGE: Check box and sign below. []

PART III - SIGNATURES - PLEASE SIGN.

Selectmen/ Aldermen/ Trustees Signatures:

Handwritten signatures: W. Kelley, David, Mary Stimmer, and Clerk Signature: Jean Lukin

Date Filed: 2-4-02

Please sign ORIGINAL and return it for Transportation signature.

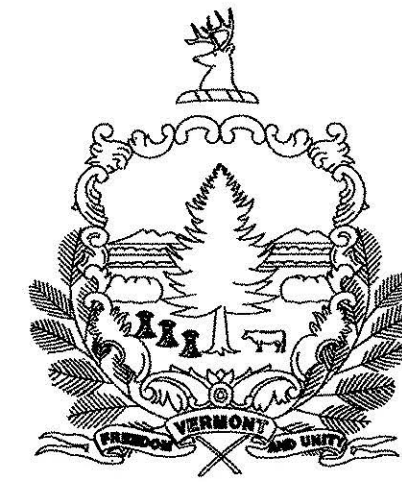
AGENCY OF TRANSPORTATION APPROVAL: Signed copy will be returned to T/C/V Clerk.

APPROVED: [Signature] Representative, Agency of Transportation

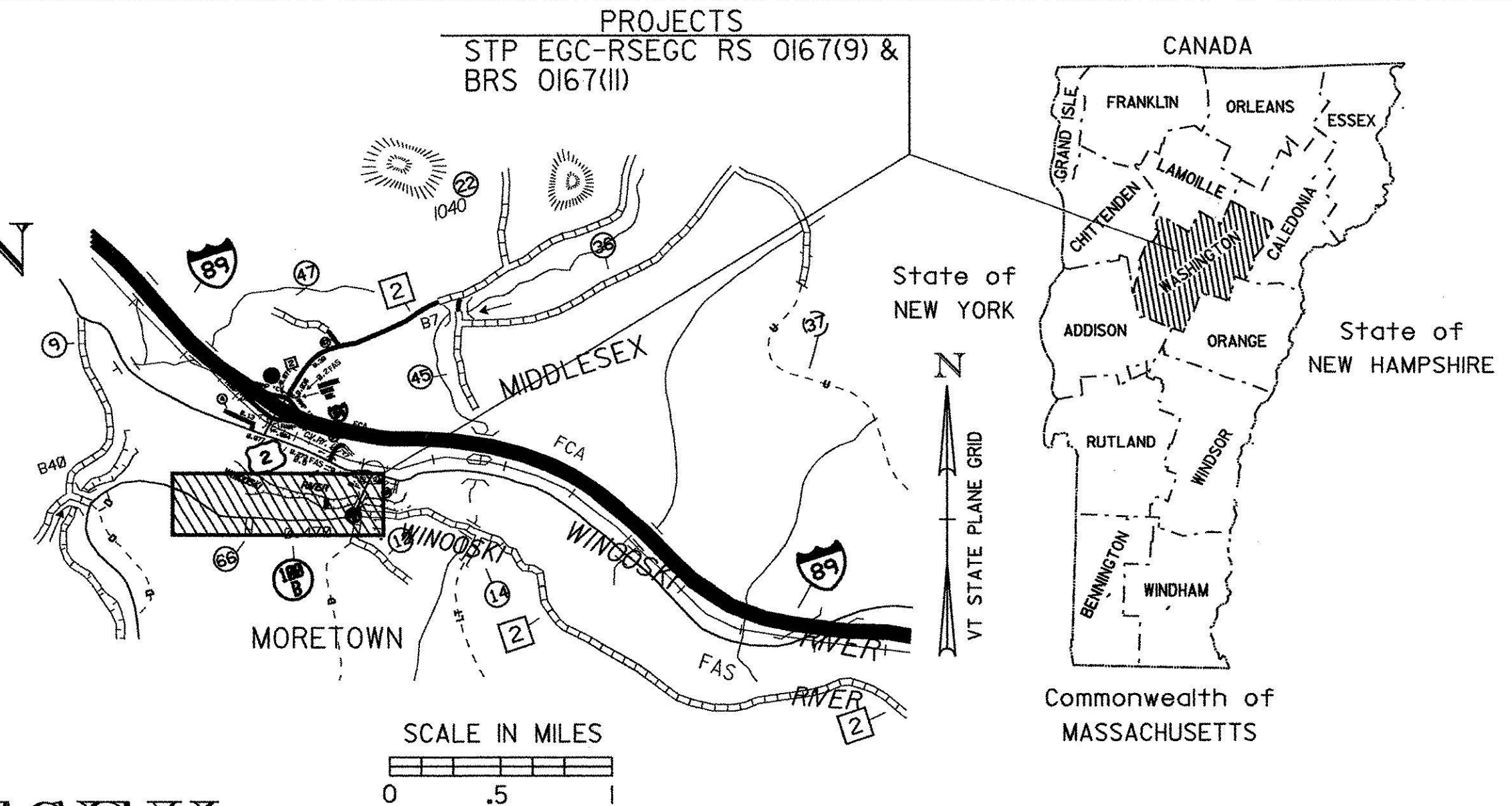
DATE: 2/1/02

SEE SHEET #2

STATE OF VERMONT AGENCY OF TRANSPORTATION



PROPOSED IMPROVEMENT TOWNS OF MORETOWN & MIDDLESEX COUNTY OF WASHINGTON VT. ROUTE 100B MAJOR COLLECTOR



RECORD PLANS	
CONTRACTOR:	KINGSBURY CONSTRUCTION - WAITSFIELD, VT
RESIDENT ENGINEER:	W. FLANDERS
CONSTRUCTION BEGAN:	AUGUST 18, 2000
CONSTRUCTION COMPLETE:	SEPTEMBER 11, 2002
RECORD PLANS BY:	R. RICHERT
<p>I HEREBY CERTIFY THAT ALL THE CONSTRUCTION REQUIRED BY THIS SET OF DRAWINGS HAS BEEN ACCOMPLISHED AS INDICATED HEREIN.</p> <p>BY <u>William R. Flanders</u> RESIDENT ENGINEER DATE <u>Feb 12, 2004</u></p>	
<p>NOTE: Any further information concerning final quantities, amounts or other details relative to this project may be found on microfilm in Central Files.</p>	

PROJECT: MORETOWN STP EGC-RSEGC RS 0167(9)

BEGINNING AT A POINT 6.951 MILES EASTERLY OF THE INTERSECTION OF VT. 100 AND VT. 100 B IN MORETOWN AND EXTENDING EASTERLY 0.841 MILES.

LENGTH OF ROADWAY 4439.26 FEET = 0.841 MILES
LENGTH OF PROJECT 4439.26 FEET = 0.841 MILES

PROJECT CONSISTS OF RECONSTRUCTING VT 100B ON MINOR RELOCATION WITH NECESSARY APPROACHES AND CONNECTING WITH PROJECT MORETOWN-MIDDLESEX BRS 0167(II).

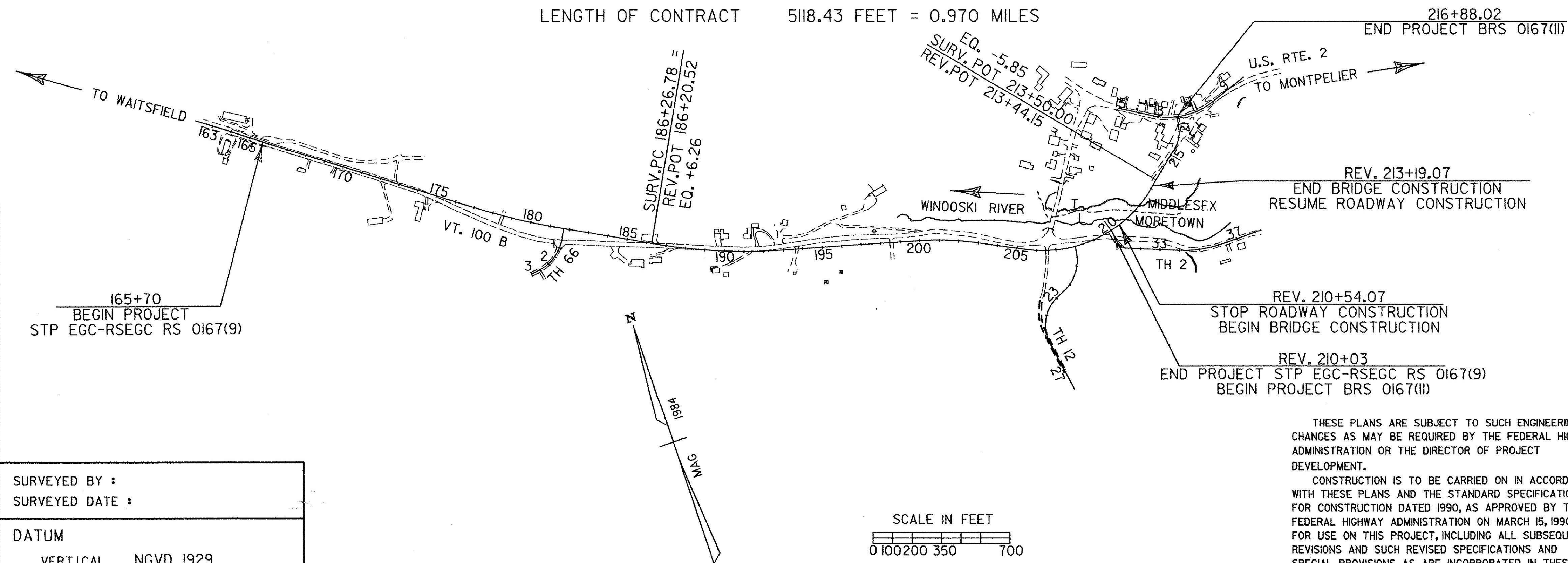
PROJECT: MORETOWN-MIDDLESEX BRS 0167(II)

BEGINNING AT A POINT 144 FEET WESTERLY OF THE MORETOWN-MIDDLESEX TOWN LINE AND EXTENDING EASTERLY 0.129 MILES TO THE INTERSECTION OF U.S. ROUTE 2.

LENGTH OF ROADWAY 414.17 FEET = 0.079 MILES
LENGTH OF BRIDGE 265.00 FEET = 0.050 MILES
LENGTH OF PROJECT 679.17 FEET = 0.129 MILES

PROJECT CONSISTS OF REPLACING THE EXISTING TEMPORARY BRIDGE #8 OVER THE WINOOSKI RIVER ON NEW ALIGNMENT WITH NECESSARY ROADWAY APPROACH CREATING A NEW INTERSECTION WITH U.S. ROUTE 2.

LENGTH OF CONTRACT 5118.43 FEET = 0.970 MILES



TRAFFIC DATA FOR VT. 100B :

2000	ADT	2900
	ADTT	150
	%T	3
	%D	54
2020	ADT	3900
	DHV	540
	ADTT	140
	%T	2
	%D	54

V-MORETOWN STP EGC-RSEGC RS 0167(9)
50 MPH (EXCEPT AS OTHERWISE NOTED*)

*35 MPH FROM STATION 205+00 TO THE END OF PROJECT MORETOWN-MIDDLESEX BRS 0167(II) AND 35 MPH ON U.S. RTE. 2 APPROACH

VT. 100 B : 18 KIP ESALS : 2000 - 2020 : 1,085,000
2000 - 2040 : 2,696,000

TRAFFIC DATA FOR U.S. 2 : MIDDLESEX S.H. TO VT. 100B:

2000	ADT	3700
	ADTT	480
	%T	6
	%D	58
2020	ADT	5100
	DHV	690
	ADTT	500
	%T	4
	%D	58

18 KIP ESALS : 2000 - 2020 : 2,491,000
2000 - 2040 : 6,088,000

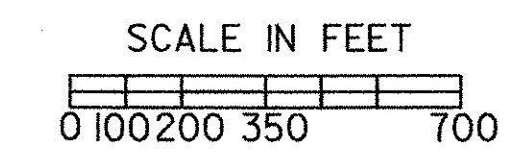
TRAFFIC DATA FOR U.S. 2 : VT. 100B TO MONTPELIER T/L

2000	ADT	2600
	ADTT	300
	%T	5
	%D	56
2020	ADT	3500
	DHV	490
	ADTT	300
	%T	4
	%D	56

18 KIP ESALS : 2000 - 2020 : 1,411,000
2000 - 2040 : 3,387,000

CONVENTIONAL SYMBOLS	
COUNTY LINE	
TOWN LINE	
LIMITS OF ACCESS	
POINT OF ACCESS	
FENCE LINE	
STONE WALL	
TRAVELED WAY	
GUARD RAIL	
RAILROAD	
SURVEY LINE	
CULVERT	
POWER POLE	
TELEPHONE POLE	
TREES	
CONTROL OF ACCESS	
PROPERTY LINE	
R.O.W. TAKING LINE	
SLOPE RIGHTS	
TOP OF CUT	
TOE OF SLOPE	

SURVEYED BY :
SURVEYED DATE :
DATUM
VERTICAL NGVD 1929
HORIZONTAL N/A



THESE PLANS ARE SUBJECT TO SUCH ENGINEERING CHANGES AS MAY BE REQUIRED BY THE FEDERAL HIGHWAY ADMINISTRATION OR THE DIRECTOR OF PROJECT DEVELOPMENT.

CONSTRUCTION IS TO BE CARRIED ON IN ACCORDANCE WITH THESE PLANS AND THE STANDARD SPECIFICATIONS FOR CONSTRUCTION DATED 1990, AS APPROVED BY THE FEDERAL HIGHWAY ADMINISTRATION ON MARCH 15, 1990 FOR USE ON THIS PROJECT, INCLUDING ALL SUBSEQUENT REVISIONS AND SUCH REVISED SPECIFICATIONS AND SPECIAL PROVISIONS AS ARE INCORPORATED IN THESE PLANS.

DE058TLE.J
09-MAY-2000 design/84e058/de058.dgn

DIRECTOR OF PROJECT DEVELOPMENT	
APPROVED	DATE 5/10/00
PROJECT MANAGER : G.H. DUBRAY	
PROJECT NAME : MORETOWN-STP EGC-RSEGC RS 0167(9)	
PROJECT NUMBER : MORETOWN-MIDDLESEX - BRS 0167(II)	
SHEET 1 OF 243 SHEETS	

INDEX OF SHEETS

- 1. TITLE SHEET
- 2. INDEX OF SHEETS
- 3-9. QUANTITY SHEETS

THE FOLLOWING SHEETS ARE FOR THE
MORERTOWN RS 0167(9) PROJECT:

- 10-11. TYPICAL SECTIONS
- 12-15. ITEM DETAIL AND DRAINAGE SHEETS
- 16-18. EARTHWORK SHEETS
- 19. BLANK
- 20-34. R. O. W. SHEETS
- 35-39. BLANK
- 40-45. PLAN AND PROFILE SHEETS
- 46. BORING SHEET
- 47-53. TRAFFIC DESIGN SHEETS
- 54-64. EROSION CONTROL SHEETS
- 65. CROSS SECTIONS FOR DRIVE AT
180+00 L.T.
- 66. SKEWED SECTION FOR 60' CULVERT @ MAINLINE 192+32
- 67-68. CHANNEL HEADWALL DETAILS OF THE 60' CULVERT @ 192+32
- 69. BLANK
- 70-72. LANDSCAPING DETAILS
- 73-117. MAINLINE CROSS SECTIONS
- 118-127. TOWN HIGHWAY 2 CROSS SECTIONS
- 128-132. TOWN HIGHWAY 12 CROSS SECTIONS
- 133-136. TOWN HIGHWAY 66 CROSS SECTIONS
- 137-145V. BRIDGE 300 SERIES : SOIL NAIL RETAINING WALL

THE FOLLOWING SHEETS ARE FOR THE
MORERTOWN-MIDDLESEX BRS 0167(11) PROJECT:

- 146. TYPICAL SECTION FOR MAINLINE
- 147. TYPICAL SECTION FOR U. S. ROUTE 2
- 148. ITEM DETAIL AND DRAINAGE SHEET
- 149. EARTHWORKS SHEET
- 150-156. R. O. W. SHEETS
- 157-161. BLANK
- 162-166. PLAN AND PROFILE SHEETS
- 167. BLANK
- 168-177. TRAFFIC DESIGN SHEETS
- 178-182. EROSION CONTROL SHEETS
- 183. BARRIER FOR WATERLINE / VT. 100 B
- 184-186. SEWAGE DISPOSAL SYSTEM DETAILS
- 187-216B. BRIDGE 100 SERIES: VT. 100B OVER
THE WINOOSKI RIVER
- 217-224. CHANNEL LINE CROSS SECTIONS
- 225-228F. BRIDGE 200 SERIES : WATER LINE OVER
THE WINOOSKI RIVER
- 229-229C. LANDSCAPING DETAILS
- 230-234. MAINLINE CROSS SECTIONS
- 235-243. U. S. ROUTE 2 CROSS SECTIONS

A-61	SLOPES IN SOLID ROCK EXCAV. (UNDER 50MPH)	06-01-94
B-1	BANKING TABLES	06-01-94
B-5	SLOPE GRADING, EMBANKMENTS, MUCK	06-01-94
B-11	UNDERDRAIN - ROCK SUBGRADE, SLOPE STABILIZ.	06-01-94
B-17	GUARD RAIL, BRIDGES, REST AREA, TURNOUTS	02-23-95
B-71	RESIDENTIAL AND COMMERCIAL DRIVES	03-10-95
C-1	CURBS, BITUMINOUS CONCRETE SIDEWALKS	01-03-00
	GRANITE SLOPE EDGING	
	VERTICAL GRANITE CURB	
	PRECAST REINFORCED CONCRETE CURB	
	CAST IN PLACE CONCRETE CURB	
	BITUMINOUS CONCRETE CURB	
	TREATED TIMBER CURB	
D-1	PRECAST RCP DROP INLET	06-01-94
	REINFORCED CONCRETE PIPE D. I. W/ CAST IRON GRATE	
	REINFORCED CONCRETE PIPE D. I. W/ CONCRETE COVER	
D-2	C. R. M. HEADWALLS, UNDERDRAIN	06-01-94
	C. R. M. HEADWALLS & RETAINING WALLS	
	RIPRAP LIGHT TYPE SLOPE HEADWALL	
	REINFORCED CONCRETE HEADWALL	
	UNDERDRAIN & CARRIER PIPE CONSTRUCTION DETAILS	
D-3	TREATED GUTTERS	06-01-94
D-4	FLUSHING BASINS, END SECTION, ELBOWS	06-01-94
	TYPICAL WATERFALL FOR CULVERTS UP TO AND INCLUDING 48" DIA.	
	EXTENSION SERVICE BOX AND CURB STOP	
	CORRUGATED PIPE ELBOW	
	GRANULAR BORROW AT CULVERT LOCATIONS	
	UNDERDRAIN FLUSHING BASIN	
	CORRUGATED STEEL PIPE END SECTION	
	CORRUGATED STEEL PIPE ARCH END SECTION	
D-6	REINFORCED CONCRETE DROP INLET WITH GRATE FOR USE IN DITCHES	06-01-94
D-8	REINFORCED CONCRETE DROP INLET WITH PRECAST COVER & GRATE (BOTTOM SECTION) SEE SHEETS D-9,10,11 FOR TOP SECTION	01-03-00
D-10	REINFORCED CONCRETE DROP INLET TOPS	06-01-94
	BITUMINOUS CONCRETE CURB & GRANITE SLOPE EDGING	
D-11	GRATES & COVERS (TYPE A)	06-01-94
D-15	PRECAST REINF. CONC. MH-GRATES (BICYCLE SAFE)	06-01-94
	CAST IRON GRATE WITH FRAME, TYPE D	
	CAST IRON GRATE WITH FRAME, TYPE E	
D-16	PRECAST CURB DI, GRATE, RCP END SECTION, ETC.	06-01-94
	CAST IRON GRATE, TYPE B	
	CAST IRON GRATE, TYPE C	
	UNDERDRAIN RISER	
	REINFORCED CONCRETE PIPE END SECTION	
	ENERGY DISSIPATOR FOR CULVERT	
D-20	HIGHWAY CROSSING FOR UNDERGROUND UTILITIES	03-10-95
D-22	SANITARY SEWER SYSTEMS	03-10-95
E-100	CONSTRUCTION APPROACH SIGNS	01-06-97
E-101	CONSTRUCTION SIGN DETAILS	03-10-97
E-102	CONSTRUCTION SIGN DETAILS	08-08-95
E-102A	CONSTRUCTION SIGN DETAILS	08-08-95
E-106	TRAFFIC CONTROL - MISCELLANEOUS DETAILS	08-08-95
E-107	DELINEATION, BARRICADES AND DETOURS FOR CONSTRUCTION AREAS	08-08-95
E-107A	BREAKAWAY BARRICADE DETAILS	08-08-95
E-109	TRAFFIC CONTROL DEVICES FOR TEMPORARY TERMINATION OF FREEWAY FACILITIES	08-08-95
E-121	STANDARD SIGN PLACEMENT - CONVENTIONAL ROAD	08-08-95
E-123	GUIDE SIGN PLACEMENT - MISCELLANEOUS DETAILS	08-08-95
E-124	TOWN LINE SIGNS	08-08-95
E-125	TRAVEL INFORMATION SIGNS	08-08-95
E-127	ROUTE MARKINGS AT RURAL INTERSECTIONS	08-08-95
E-128A	VILLAGE SIGNS A - M	08-08-95
E-131	GUIDE SIGN DETAILS	08-08-95
E-132	GENERAL MOTORIST SERVICE SIGN DETAILS	08-18-95
E-133	SERVICE SIGN DETAILS	08-08-95
E-134	BRIDGE NUMBER PLAQUE	08-08-95
E-135	INTERSTATE ROUTE MARKER SIGN DETAILS	08-18-95
E-136A	U. S. ROUTE MARKER SIGN DETAILS	08-08-95

E-136B	STATE ROUTE MARKER SIGN DETAILS	08-08-95
E-136C	STATE NUMBERED TOWN HIGHWAY SIGN DETAILS	08-08-95
E-138	MILEMARKER DETAILS STATE & TOWN HIGHWAYS	08-08-95
E-140	REGULATORY SIGN DETAILS	08-30-96
E-141	REGULATORY SIGN DETAILS	09-20-95
E-142	REGULATORY SIGN DETAILS	09-20-95
E-143	REGULATORY SIGN DETAILS	09-20-95
E-144	REGULATORY SIGN DETAILS	03-29-99
E-145A	REGULATORY SIGN DETAILS	12-23-94
E-145B	REGULATORY SIGN DETAILS	12-23-94
E-146	REGULATORY SIGN DETAILS	09-20-95
E-150	WARNING SIGN DETAILS	01-15-97
E-151	WARNING SIGN DETAILS	08-08-95
E-152	WARNING SIGN DETAILS	08-08-95
E-153	WARNING SIGN DETAILS	01-15-97
E-154	WARNING SIGN DETAILS	08-08-95
E-155	WARNING SIGN DETAILS	08-08-95
E-160	FLANGED CHANNEL STEEL SIGN POST	05-20-99
E-162	TUBULAR ALUMINUM SIGN POST	05-20-99
E-173	PULL BOXES AND JUNCTION BOXES	08-09-95
E-180A	STREET LIGHTING DETAILS	08-09-95
E-180B	STREET LIGHTING DETAILS	08-09-95
E-181	TYPICAL BRIDGE MOUNTING DETAILS FOR STREET LIGHT POLE	08-09-95
E-191	PAVEMENT MARKING DETAILS	02-01-99
E-192	PAVEMENT MARKING DETAILS	12-28-98
E-193	PAVEMENT MARKING DETAILS	08-18-95
E-197	DELINEATOR PLACEMENT TYPICAL	08-18-95
E-198	DELINEATORS AND MILEPOSTS	04-14-97
E-199	DELINEATOR AND MILEPOST MOUNTING ON BRIDGE RAIL	08-18-95
F-1	WOVEN WIRE FENCE WITH WOOD POSTS WITH STEEL POSTS WOOD BRACE FOR WOVEN WIRE FENCE STEEL BRACE FOR WOVEN WIRE FENCE DRIVE GATE FOR WOVEN WIRE FENCE WALK GATE FOR WOVEN WIRE FENCE	06-01-94
F-2	CHAIN LINK FENCE, TYPE I DRIVE GATE FOR CHAIN LINK FENCE, TYPE I WALK GATE FOR CHAIN LINK FENCE, TYPE I	06-01-94
F-4	CHAIN LINK FENCE, TYPE II DRIVE GATE FOR CHAIN LINK FENCE, TYPE II WALK GATE FOR CHAIN LINK FENCE, TYPE II	06-01-94
G-1	STEEL BEAM GUARDRAIL (50MPH & OVER) HEAVY DUTY STEEL BEAM GUARDRAIL TWISTED END TERMINAL ANCHOR FOR STEEL BEAM RAIL	01-03-00
G-1D	STEEL BEAM GUARDRAIL (40MPH & LESS) HEAVY DUTY STEEL BEAM GUARDRAIL STEEL BEAM MEDIAN BARRIER ANCHOR FOR STEEL BEAM RAIL	01-03-00
G-4	MARKERS - GUIDE POSTS - PLANK GUARD RAIL PLANK RAIL GUIDE POSTS WOOD MARKER POSTS STEEL MARKER POSTS	06-01-94
G-17A	MODIFIED ECCENTRIC LOADER TERMINAL (MELT)	01-18-96
G-17B	MODIFIED ECCENTRIC LOADER TERMINAL (MELT)	06-30-95
G-18	PRECAST CONCRETE TEMPORARY TRAFFIC BARRIER	06-01-94
J-1	PROJECT AND BOUNDARY MARKERS	06-01-94
J-3	MAILBOX SUPPORT DETAIL (SINGLE AND MULTIPLE SUPPORT)	08-07-95
L-1	SETTLEMENT PLATFORM, TYPE I AND TYPE II	03-09-95
L-2	GEOTECHNICAL INSTRUMENTATION	07-24-95
L-3	PIEZOMETERS TYPE III (AIR ACTUATED)	03-09-95
T-1	TEMPORARY EROSION CONTROL DETAILS	06-01-94
T-2	TEMPORARY EROSION CONTROL DETAILS	06-01-94

DATUM
VERTICAL _____
HORIZONTAL _____

SURVEYED BY	NYC	DATE	
DRAWN BY	SQUADB	DATE	2/93
SQUAD LEADER	DELLA SANTA		
DESIGN FILE NO.	/SQDB/78E132/DE132.DGN		
IPARM FILE	DE132IND	DATE PLOTTED	31-MAY-2000
PROJ. NAME	MORERTOWN & MORERTOWN-MIDDLESEX		
PROJ. NO.	RS 0167(9) & BRS 0167(III)		
SHEET	2	OF	243 SHEETS

CONSTRUCT ACCESS DRIVE
 REV. 198+05 LT. ~ REV. 199+30 LT. (APPROXIMATELY)
 * NOTE: ACTUAL LOCATION OF PROPOSED ACCESS
 FOR DAM TO BE DETERMINED BY THE
 ENGINEER UPON CONSTRUCTION

BM
 VTAT DISK
 "DAM ONE"
 ELEV. 505.555'

REV. CURVE #3 PI 201+23.23 =
 201+20.75
 SURV. CURVE #3 PI 201+47.39 =
 201+46.36

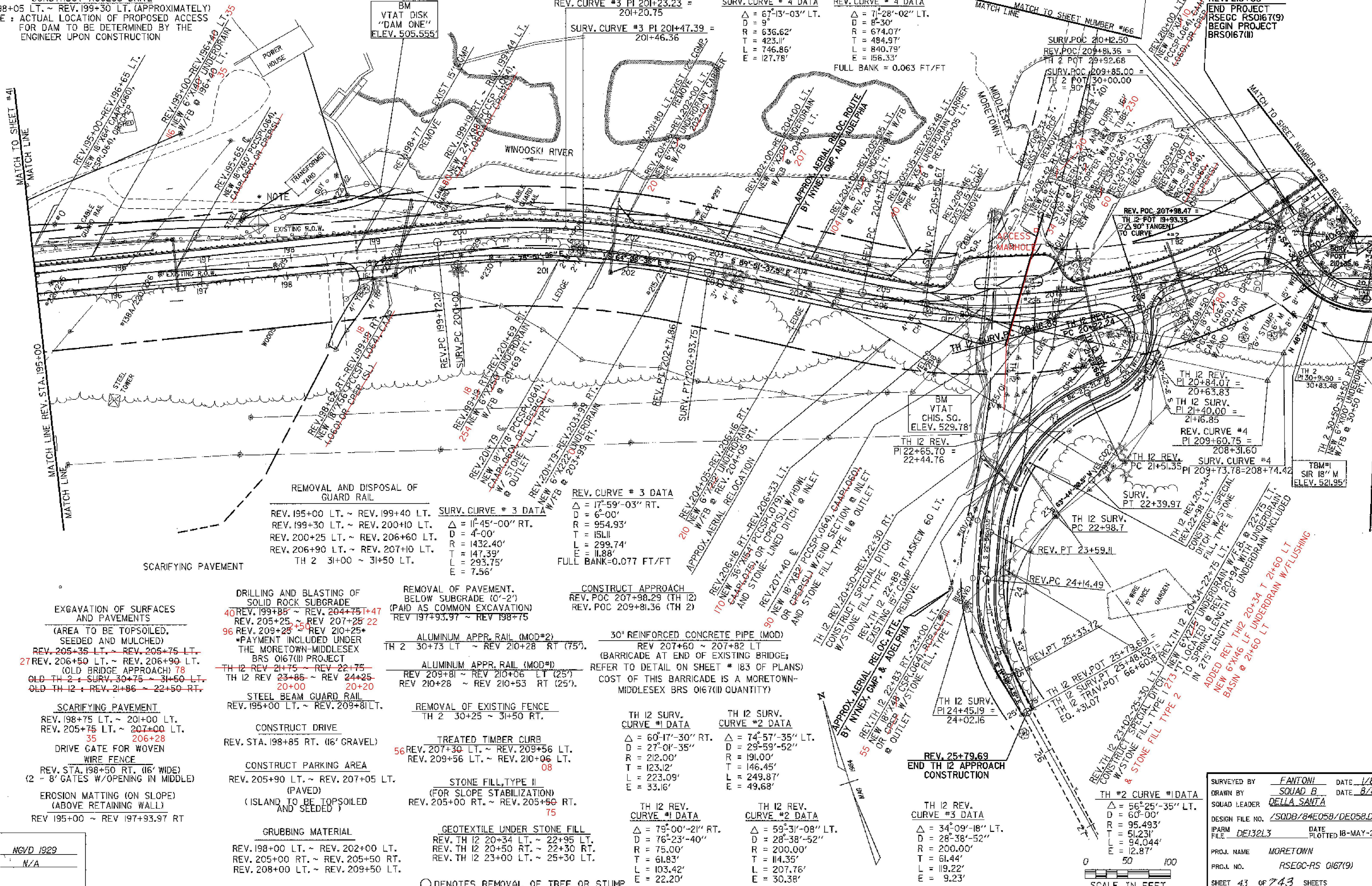
SURV. CURVE #4 DATA
 $\Delta = 67^{\circ}13'-03''$ LT.
 $D = 9'$
 $R = 636.62'$
 $T = 423.11'$
 $L = 746.86'$
 $E = 127.78'$

REV. CURVE #4 DATA
 $\Delta = 71^{\circ}28'-02''$ LT.
 $D = 8'-30''$
 $R = 674.07'$
 $T = 484.97'$
 $L = 840.79'$
 $E = 156.33'$
 FULL BANK = 0.063 FT/FT

REV. 210+03
 END PROJECT
 RSEGC RS0167(9)
 BEGIN PROJECT
 BR50167(III)

MATCH TO SHEET #41
 MATCH LINE
 MATCH LINE STA. 195+00

MATCH TO SHEET NUMBER #45
 MATCH LINE STA. 31+50



REMOVAL AND DISPOSAL OF
 GUARD RAIL
 REV. 195+00 LT. ~ REV. 199+40 LT.
 REV. 199+30 LT. ~ REV. 200+10 LT.
 REV. 200+25 LT. ~ REV. 206+60 LT.
 REV. 206+90 LT. ~ REV. 207+10 LT.
 TH 2 31+00 ~ 31+50 LT.

REV. CURVE #3 DATA
 $\Delta = 17^{\circ}59'-03''$ RT.
 $D = 6'-00''$
 $R = 954.93'$
 $T = 151.11'$
 $L = 299.74'$
 $E = 11.88'$
 FULL BANK=0.077 FT/FT

CONSTRUCT APPROACH
 REV. POC 207+98.29 (TH 12)
 REV. POC 209+81.36 (TH 2)

30" REINFORCED CONCRETE PIPE (MOD)
 REV 207+60 ~ 207+82 LT
 (BARRICADE AT END OF EXISTING BRIDGE;
 REFER TO DETAIL ON SHEET # 183 OF PLANS)
 COST OF THIS BARRICADE IS A MORETOWN-
 MIDDLESEX BRS 0167(III) QUANTITY)

TH 12 SURV.
 CURVE #1 DATA
 $\Delta = 60^{\circ}17'-30''$ RT.
 $D = 27^{\circ}01'-35''$
 $R = 212.00'$
 $T = 123.12'$
 $L = 223.09'$
 $E = 33.16'$

TH 12 REV.
 CURVE #1 DATA
 $\Delta = 79^{\circ}00'-21''$ RT.
 $D = 76^{\circ}23'-40''$
 $R = 75.00'$
 $T = 61.83'$
 $L = 103.42'$
 $E = 22.20'$

TH 12 SURV.
 CURVE #2 DATA
 $\Delta = 74^{\circ}57'-35''$ LT.
 $D = 29^{\circ}59'-52''$
 $R = 191.00'$
 $T = 146.45'$
 $L = 249.87'$
 $E = 49.68'$

TH 12 SURV.
 CURVE #2 DATA
 $\Delta = 59^{\circ}31'-08''$ LT.
 $D = 28^{\circ}38'-52''$
 $R = 200.00'$
 $T = 114.35'$
 $L = 207.76'$
 $E = 30.38'$

TH 12 REV.
 CURVE #3 DATA
 $\Delta = 34^{\circ}09'-18''$ LT.
 $D = 28^{\circ}38'-52''$
 $R = 200.00'$
 $T = 61.44'$
 $L = 119.22'$
 $E = 9.23'$

DRILLING AND BLASTING OF
 SOLID ROCK SUBGRADE
 40 REV. 199+85 ~ REV. 204+75 T+47
 96 REV. 209+25 ~ REV 210+25*
 *PAYMENT INCLUDED UNDER
 THE MORETOWN-MIDDLESEX
 BRS 0167(III) PROJECT
 TH 12 REV 21+75 ~ REV 22+75
 TH 12 REV 23+85 ~ REV 24+25
 20+00 20+20

CONSTRUCT DRIVE
 REV. STA. 198+85 RT. (16' GRAVEL)
 CONSTRUCT PARKING AREA
 (PAVED)
 REV. 205+90 LT. ~ REV. 207+05 LT.
 (ISLAND TO BE TOPSOILED
 AND SEEDED)

GRUBBING MATERIAL
 REV. 198+00 LT. ~ REV. 202+00 LT.
 REV. 205+00 RT. ~ REV. 205+50 RT.
 REV. 208+00 LT. ~ REV. 209+50 LT.

REMOVAL OF PAVEMENT,
 BELOW SUBGRADE (0'-2')
 (PAID AS COMMON EXCAVATION)
 REV 197+93.97 ~ REV 198+75
 ALUMINUM APPR. RAIL (MOD#2)
 TH 2 30+73 LT ~ REV 210+28 RT (75').
 ALUMINUM APPR. RAIL (MOD#1)
 REV 209+81 ~ REV 210+06 LT (25')
 REV 210+28 ~ REV 210+53 RT (25').

REMOVAL OF EXISTING FENCE
 TH 2 30+25 ~ 31+50 RT.
 TREATED TIMBER CURB
 56 REV. 207+30 LT. ~ REV. 209+56 LT.
 REV. 209+56 LT. ~ REV. 210+06 LT.
 08

STONE FILL, TYPE II
 (FOR SLOPE STABILIZATION)
 REV. 205+00 RT. ~ REV. 205+90 RT.
 75

GEOTEXTILE UNDER STONE FILL
 REV. TH 12 20+34 LT. ~ 22+95 LT.
 REV. TH 12 20+50 RT. ~ 22+30 RT.
 REV. TH 12 23+00 LT. ~ 25+30 LT.

EXCAVATION OF SURFACES
 AND PAVEMENTS
 (AREA TO BE TOPSOILED,
 SEED AND MULCHED)
 REV. 205+35 LT. ~ REV. 205+75 LT.
 27 REV. 206+50 LT. ~ REV. 206+90 LT.
 (OLD BRIDGE APPROACH) 78
 OLD TH 2 SURV. 30+75 ~ 31+50 LT.
 OLD TH 12 SURV. 21+86 ~ 22+50 RT.

SCARIFYING PAVEMENT
 REV. 198+75 LT. ~ 201+00 LT.
 REV. 205+75 LT. ~ 207+00 LT.
 35 206+28
 DRIVE GATE FOR WOVEN
 WIRE FENCE
 REV. STA. 198+50 RT. (16' WIDE)
 (2 - 8' GATES W/OPENING IN MIDDLE)

EROSION MATTING (ON SLOPE)
 (ABOVE RETAINING WALL)
 REV 195+00 ~ REV 197+93.97 RT

DATUM
 VERTICAL: NGVD 1929
 HORIZONTAL: N/A

TH #2 CURVE #1 DATA
 $\Delta = 56^{\circ}25'-35''$ LT.
 $D = 60'-00''$
 $R = 95.493'$
 $T = 51.231'$
 $L = 94.044'$
 $E = 12.87'$

SCALE IN FEET
 0 50 100

SURVEYED BY FANTONI DATE 1/87
 DRAWN BY SQUAD B DATE 8/87
 SQUAD LEADER DELLA SANTA
 DESIGN FILE NO. /SQDB/84E058/DE058.DGN
 IPARM FILE DE132L3 DATE PLOTTED 18-MAY-2000
 PROJ. NAME MORETOWN
 PROJ. NO. RSEGC-RS 0167(9)
 SHEET 43 OF 243 SHEETS

○ DENOTES REMOVAL OF TREE OR STUMP

U.S. 2 APPROACH 8+50
 BEGIN REMOVAL OF
 BIT. CONC. PAVE. TO
 1/2" DEPTH BY COLD
 PLANING.
 BEGIN 1/2" BIT. CONC.
 OVERLAY.

RTE 2 CURVE DATA
 $\Delta = 51^{\circ}54'00''$ RT
 $D = 15'$
 $R = 381.97$
 $T = 185.89$
 $L = 346.00$
 $E = 42.83$

END 1/2" BIT. CONC. OVERLAY
 & COLD PLANING.
 BEGIN REMOVAL OF
 PORTLAND CEMENT
 CONC. PAVEMENT.

14+25 20
 END REMOVAL OF
 PORTLAND CEMENT
 CONC. PAVE.
 BEGIN REMOVAL OF
 BIT. CONC. PAVE. TO
 1/2" DEPTH BY
 COLD PLANING
 BEGIN 1/2" BIT.
 CONC. OVERLAY

**VT. RTE. 100 B
 CURVE #5**
 $\Delta = 38^{\circ}04'15''$ LT
 $D = 38'$
 $R = 150.778$
 $T = 52.02$
 $L = 100.186$
 $E = 8.72$
 FULL BANK = 0.021 FT / FT

216+27 LT - US 2 12+63 LT
 GRANITE SLOPE EDGING
 ML 216+15 LT - US 2 12+73 LT.
 (CONSTRUCT 9' WIDE ISLAND FILLED
 LEVEL WITH TOPSOIL)
 (SEE DETAIL ON SHEET # 146)

CONSTRUCT DRIVE
 US 2 10+45 LT. (GRAVEL)
 72 10+53 RT. (PAVED + GRAVEL)
 11+04 LT. (GRAVEL)
 16 11+68 RT. (PAVED APRON)
 12+35 RT. (GRAVEL)
 12+93 LT. (PAVED)
 13+06 RT. (GRAVEL)
 13+65 RT. (GRAVEL)
 14+50 LT. (PAVED APRON)
 14+72 RT. (PAVED APRON)
 ML 215+94 LT. (PAVED)
 ML 216+06 RT. (PAVED)
 US 2 15+25 RT. (GRADE)

COLD PLANING - BIT. PAVEMENT
 STA. 8+50 ~ 9+25 00
 STA. 14+25 ~ 15+13 16+06
 25 / 20

CONSTRUCT GRASS AREA
 U.S. 2 10+11 ~ 10+36 LT. (5' WIDE)
 10+55 ~ 10+95 LT. (5' WIDE)
 10+76 ~ 11+45 RT. (5' WIDE)
 13+11 ~ 13+65 LT. (5' WIDE)
 GRADE, TOPSOIL AND SEED EXISTING GRAVEL ROAD
 FROM STA. 216+08 ~ 216+93 RT. STAYING WITHIN
 EXISTING RIGHT OF WAY.

216+88.02
 END PROJ. BRS-0167(II)
 END ROADWAY CONSTR.
 CONST. US 2 APPROACH

REMOVAL OF EXISTING FENCE
 U.S. 2 APPROACH:
 STA. 12+16 RT. ~ 12+19 RT.
 RELOCATE MAILBOX
 MULTIPLE SUPPORT
 STA. 216+44 RT.
 RELOCATE MAILBOX
 SINGLE SUPPORT
 STA. 215+48 LT.
 US 2 10+83 RT.

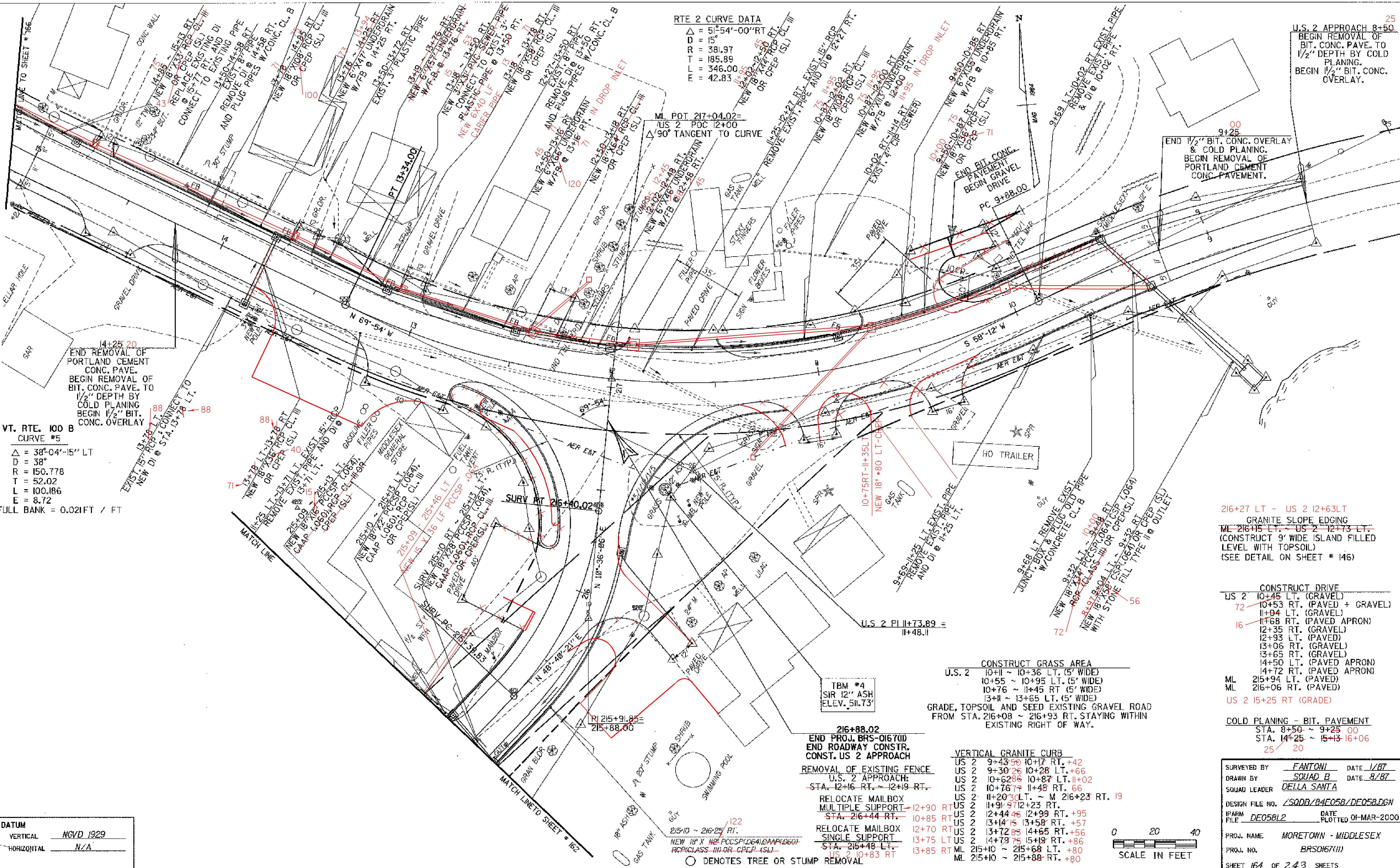
VERTICAL GRANITE CURB
 US 2 9+43.50 10+17 RT. +42
 US 2 9+30.26 10+28 LT. +66
 US 2 10+62.86 10+87 LT. +102
 US 2 10+76.77 11+45 RT. 66
 US 2 11+20.30 LT. ~ M 216+23 RT. 19
 US 2 11+91.97 12+23 RT.
 US 2 12+44.46 12+99 RT. +95
 US 2 13+14.15 13+58 RT. +57
 US 2 13+72.83 14+65 RT. +56
 US 2 14+79.75 15+19 RT. +86
 ML 215+10 ~ 215+68 LT. +80
 ML 215+10 ~ 215+88 RT. +80

SURVEYED BY FANTONI DATE 1/87
 DRAWN BY SQUAD B DATE 8/87
 SQUAD LEADER DELLA SANTA
 DESIGN FILE NO. LSQDB/84EQ58/DF05B.DGN
 IFARM FILE DE058L2 DATE PLOTTED 01-MAR-2000

PROJ. NAME MORETOWN - MIDDLESEX
 PROJ. NO. BRS0167(II)
 SHEET 164 OF 243 SHEETS



DATUM
 VERTICAL NGVD 1929
 HORIZONTAL N/A



OVERLAY CHURCH STREET
 (FORMER VT. ROUTE 100B)
 W/ 1/2" TYPE III WEARING COURSE
 (REFER TO SHEET 147 FOR PAVING TYPICAL)

REV. ML 207+60 ~ 207+82 LT.
 30" RCP (MOD) BARRICADE (SEE SHT. # 183 FOR DETAILS)
 POSITION OF BARRICADE TO BE DETERMINED BY
 RESIDENT ENGINEER IN FIELD.

30" REINFORCED CONCRETE PIPE (MOD)
 (BARRICADE AT THE END OF EXISTING
 BRIDGE) (REFER TO DETAIL ON SHEET
 NUMBER 183)
 REV. MAINLINE 207+60 ~ 207+82 LT.

VT 100B

U.S. ROUTE 2

U.S. 2 APPROACH 16+63
 END CONSTRUCTION

LIMITS OF PAVING

MIDDLESEX
 TOWN HALL

16+06
 U.S. 2 15+85
 END REMOVAL OF
 BIT. CONC. PAVE.
 END 1/2" BIT. CONC.
 OVERLAY

REMOVAL AND DISPOSAL OF GUARD RAIL
 REMOVE GUARD RAIL APPROACH SECTIONS
 ON THE EAST AND WEST SIDE OF THE
 NORTHERN END OF THE EXISTING BRIDGE

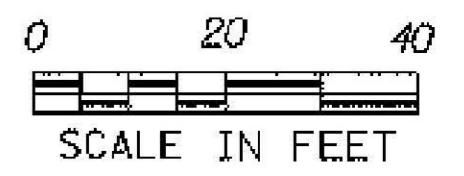
COLD PLANING - BIT. PAVEMENT
 U.S. 2 15+13 ~ 15+85
 16+06

VERTICAL GRANITE CURB
 U.S. 2 15+19 ~ 15+82 RT.
 86

EXCAVATION OF SURFACES AND PAVEMENTS
 U.S. 2 15+50 ~ 16+63 LT.
 (AREA TO BE TOPSOILED, SEEDED AND
 MULCHED)

NEW 18" V. 15+77 RT.
 REPLACE CPEP ROB. CL. @ 15+77 (RT) AND DI
 CONNECT TO EXISTING PIPE

VERT. CURB DROP
 ER DRIVE



SURVEYED BY	SQUADB	DATE	2/93
DRAWN BY	DELLA SANTA	DATE	2/93
SQUAD LEADER	DELLA SANTA		
DESIGN FILE NO.	/S0DB/84E058/DE058.DGN		
IPARM FILE	DE058L3	DATE PLOTTED	25-APR-2000
PROJ. NAME	MORETOWN-MIDDLESEX		
PROJ. NO.	BRS 0167(II)		
SHEET	166	OF	243 SHEETS

DATUM	
VERTICAL	
HORIZONTAL	

MATCH LINE TO SHEET # 43

MATCH LINE TO SHEET # 164