

CERTIFICATE OF HIGHWAY MILEAGE

YEAR ENDING FEBRUARY 10, 2007

Fill out form, make and file copy with the Town Clerk, and mail ORIGINAL, before February 20, 2007 to: Vermont Agency of Transportation, Policy and Planning Division, Drawer 33, Montpelier, VT 05633.

We, the Selectmen or Aldermen or Trustees of CHITTENDEN in RUTLAND County

on an oath state that the mileage of highways, according to Title 19, V.S.A, Sec #305, added 1985, is as follows:

PART I - CHANGES TOTALS - Please fill in and calculate totals.

Legal Trails shown on 2006 Legal Trail Verification Map

Table with columns: Town Highways, Previous Mileage, Added Mileage, Subtracted Mileage, Total, Scenic Highways. Rows include Class 1, Class 1 Lane, Class 2, Class 3, State Highway, Class 4, Legal Trail, and Total. Includes handwritten corrections in red ink.

\* Mileage for Class 1 Lane, Class 4, and Legal Trail classifications is NOT included in total. 22 Aug 2007

PART II - INFORMATION AND DESCRIPTION OF CHANGES SHOWN ABOVE.

1. NEW HIGHWAYS: Please attach Selectmen's "Certificate of Completion and Opening"

see attached for Class 4 and Legal Trails to be added

2. DISCONTINUED: Please attach SIGNED copy of proceedings (minutes of meeting)

1 discontinuance - see attached

3. RECLASSIFIED/REMEASURED: Please attach SIGNED copy of proceedings (minutes of meeting)

4. SCENIC HIGHWAYS: Please attach a copy of order designating/discontinuing Scenic Highways

IF THERE ARE NO CHANGES IN MILEAGE: Check box and sign below. [ ]

PART III - SIGNATURES - PLEASE SIGN.

Selectmen/ Aldermen/ Trustees Signatures:

Handwritten signatures of Robert E. Beaman, Anne Conner, and Donald J. Farrell.

T/C/V Clerk Signature: Rebecca Janoski

Date Filed: Feb. 07, 2007

Please sign ORIGINAL and return it for Transportation signature.

AGENCY OF TRANSPORTATION APPROVAL: Signed copy will be returned to T/C/V Clerk.

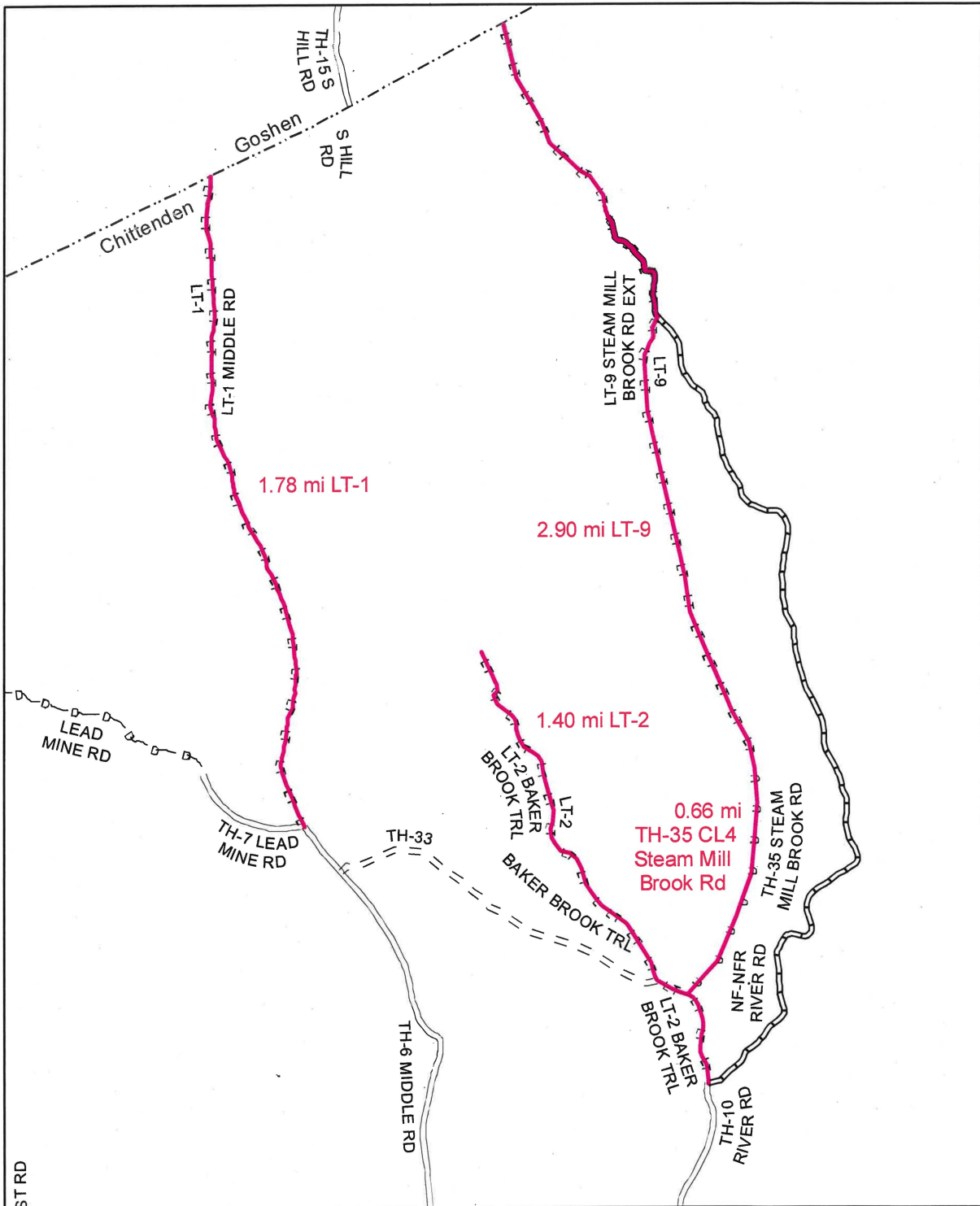
APPROVED:

Representative, Agency of Transportation

DATE:

5/3/2007

Jonathan Croft

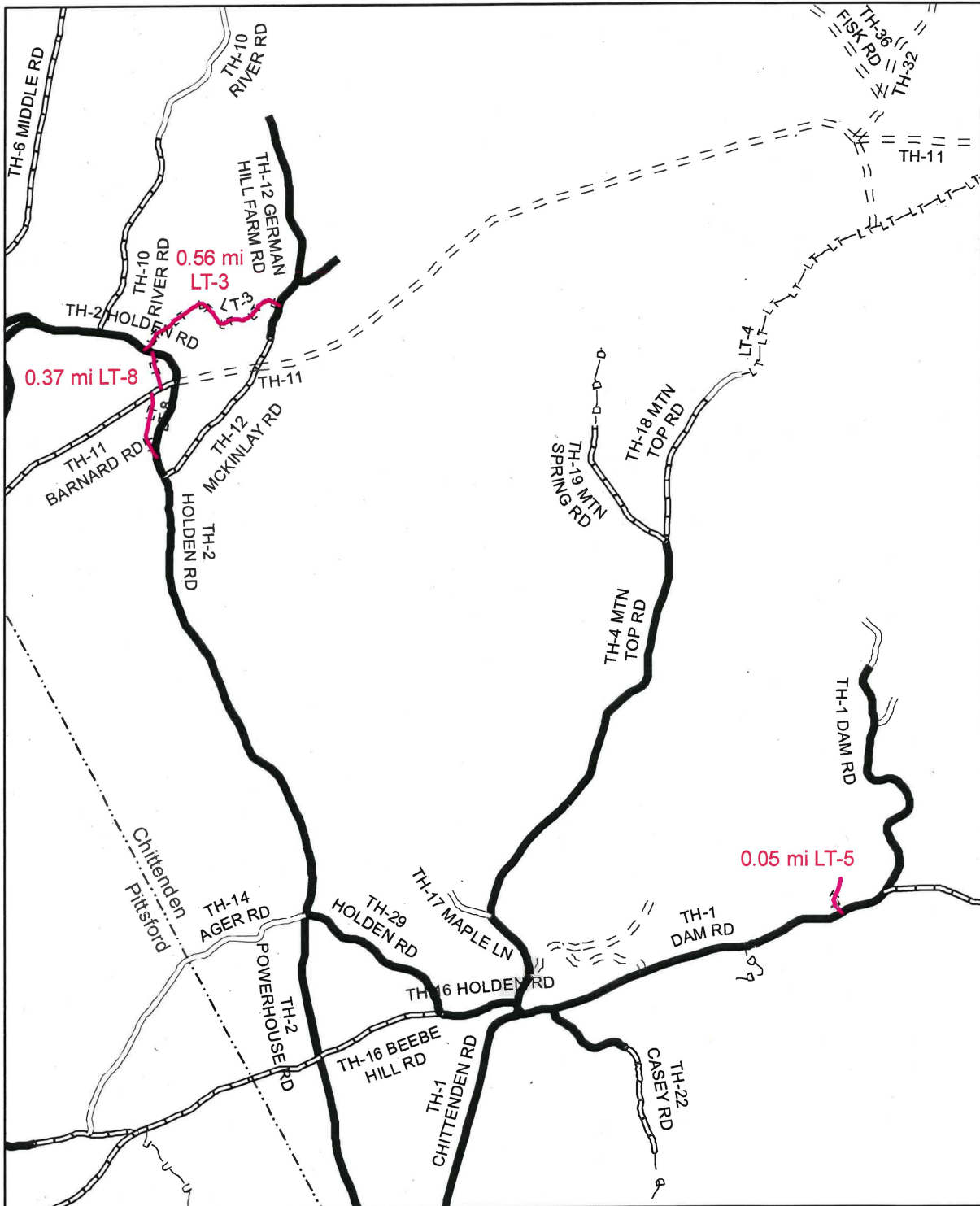


**Mileage Certificate Change 2007 -- CHITTENDEN**

Mapping Unit  
 Policy & Planning Division  
 Vermont Agency of Transportation -- June 2007



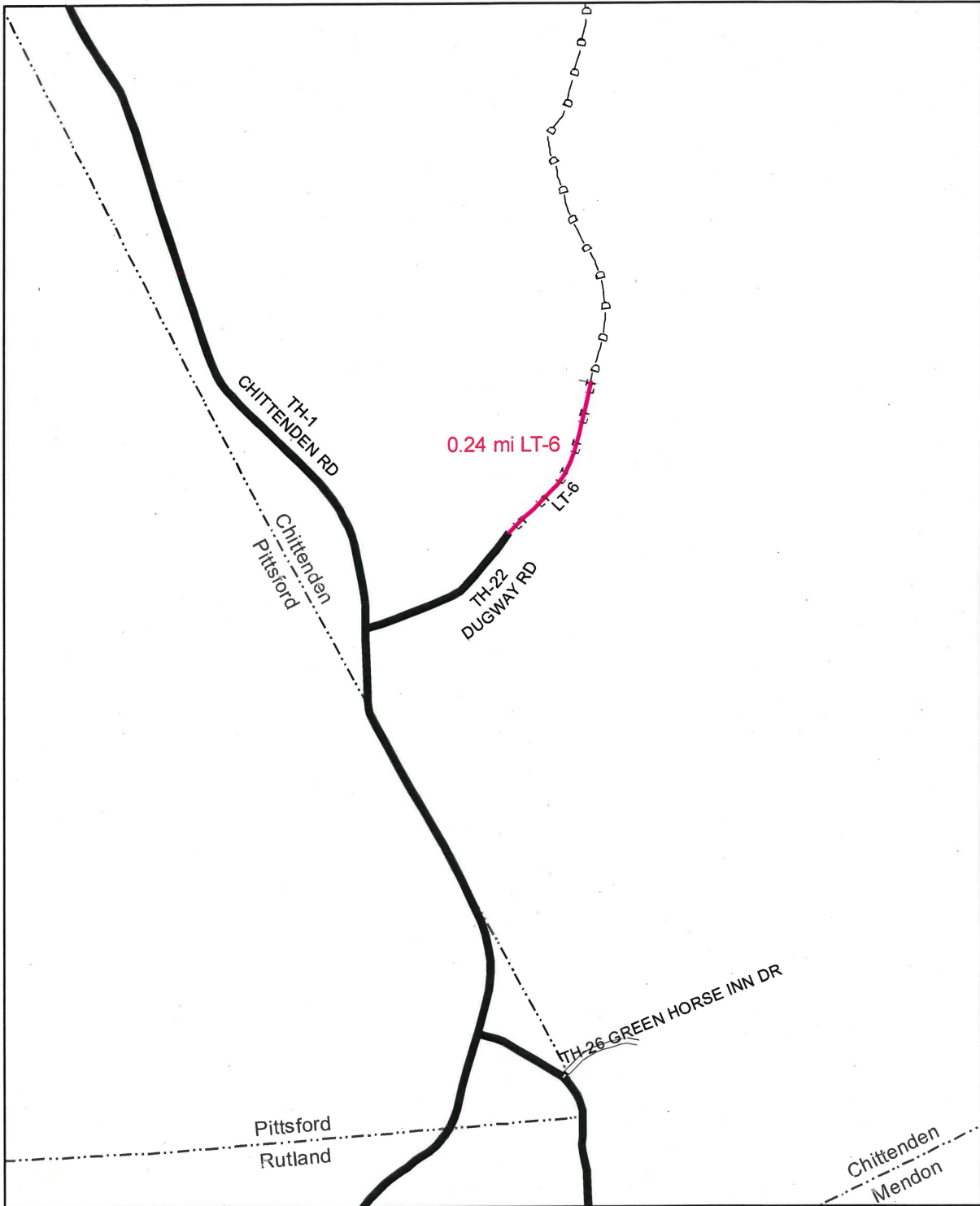




**Mileage Certificate Change 2007 -- CHITTENDEN**

Mapping Unit  
 Policy & Planning Division  
 Vermont Agency of Transportation -- June 2007

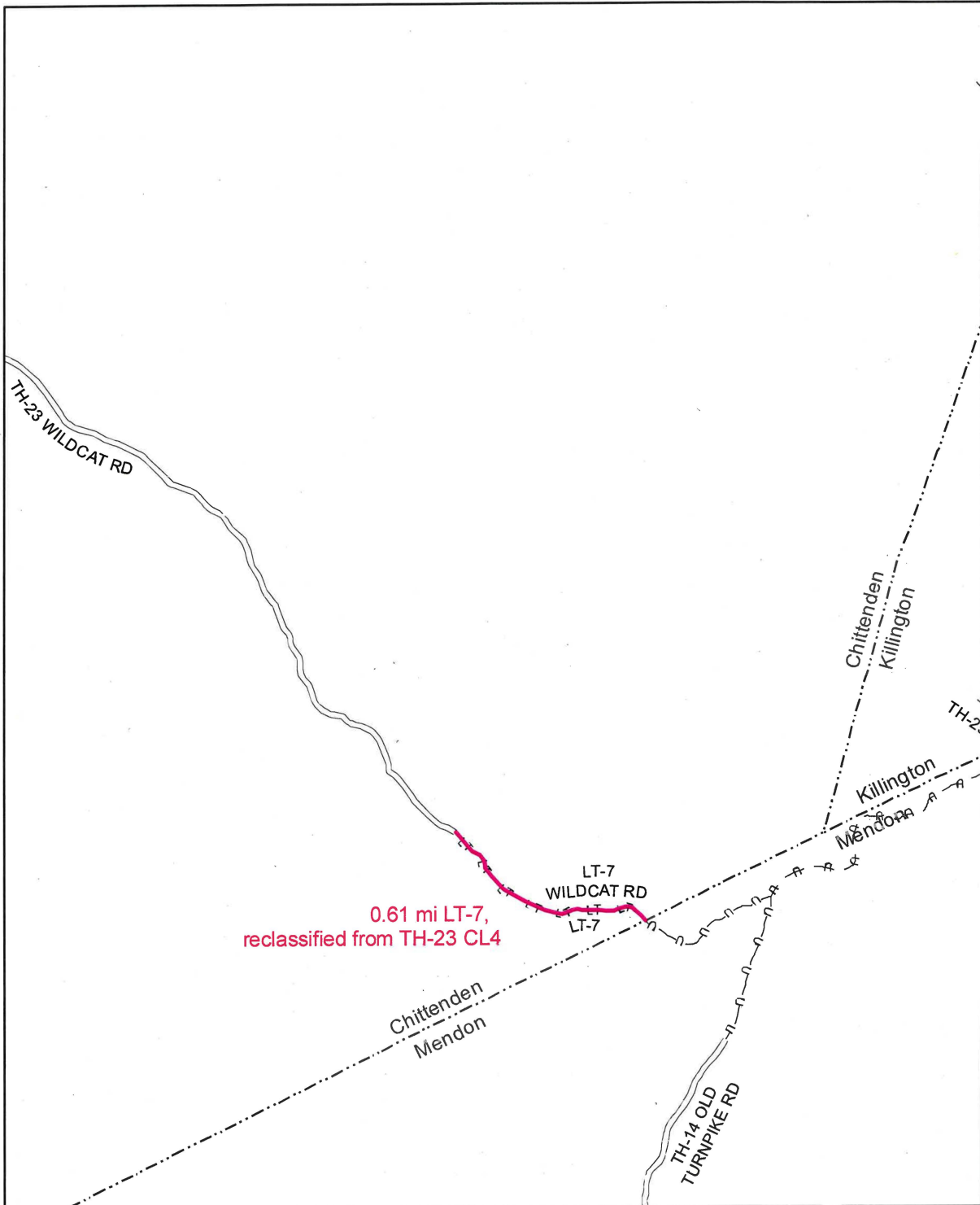




**Mileage Certificate Change 2007 -- CHITTENDEN**

Mapping Unit  
 Policy & Planning Division  
 Vermont Agency of Transportation -- June 2007



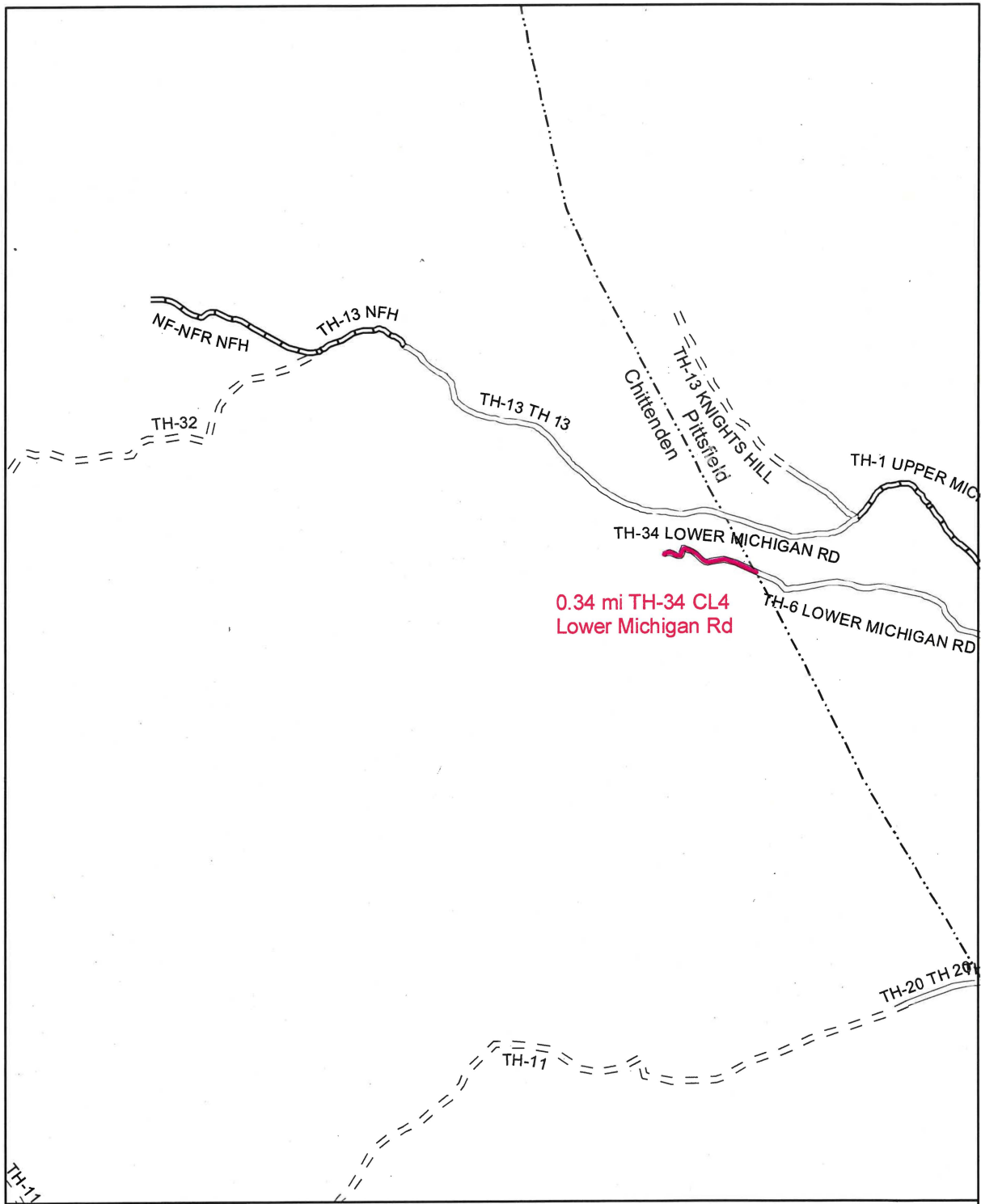


**Mileage Certificate Change 2007 -- CHITTENDEN**

Mapping Unit  
 Policy & Planning Division  
 Vermont Agency of Transportation -- June 2007



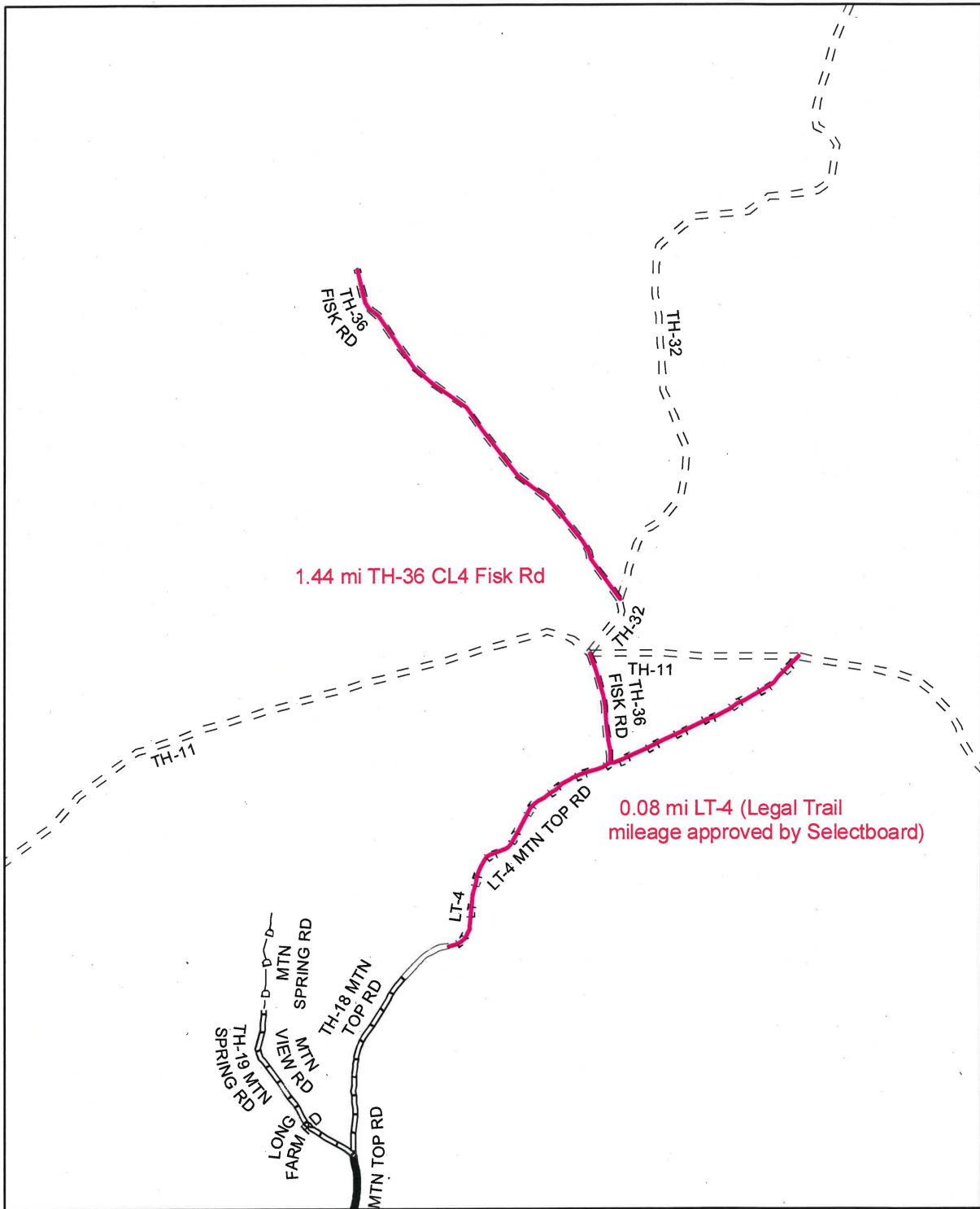




**Mileage Certificate Change 2007 -- CHITTENDEN**

Mapping Unit  
 Policy & Planning Division  
 Vermont Agency of Transportation -- June 2007

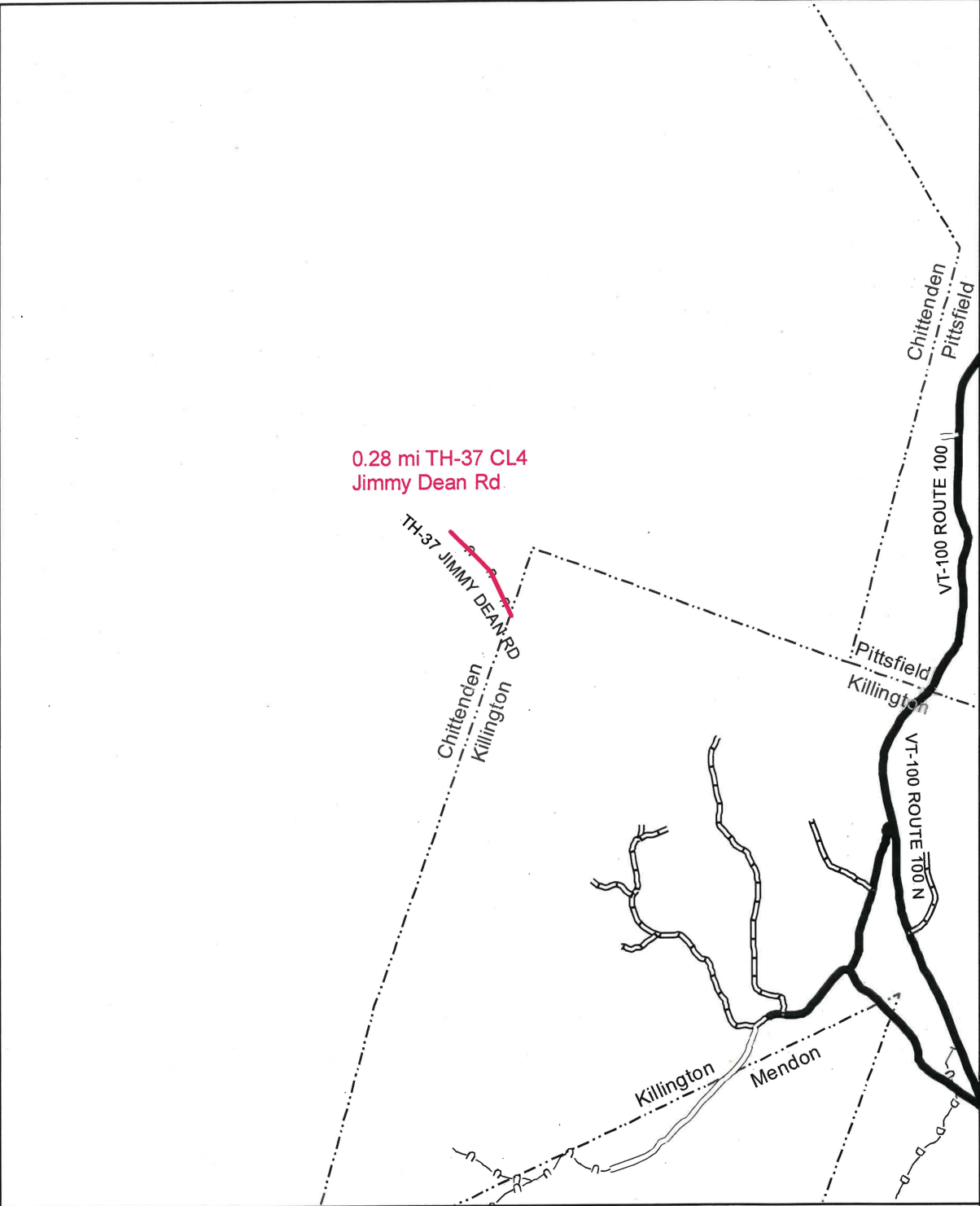




**Mileage Certificate Change 2007 -- CHITTENDEN**

Mapping Unit  
 Policy & Planning Division  
 Vermont Agency of Transportation -- June 2007





**Mileage Certificate Change 2007 -- CHITTENDEN**

Mapping Unit  
 Policy & Planning Division  
 Vermont Agency of Transportation -- June 2007







**State of Vermont**  
**Policy & Planning Division-Mapping Unit**  
1 National Life Drive, Drawer 33  
Montpelier, VT 05633-5001  
<http://www.aot.state.vt.us>

*Agency of Transportation*

Telephone: 802-828-2109  
Fax: 802-828-2334  
Email: [sara.moulton@state.vt.us](mailto:sara.moulton@state.vt.us)

April 30, 2007

Chairperson, Board of Selectmen  
Chittenden, c/o Town Clerk  
PO Box 89 - 337 Holden Rd  
Chittenden, VT 05737

Dear Town Clerk and Selectboard:

Thank you for submitting your 2007 Certificate of Highway Mileage. The numbers submitted by Chittenden on its 2007 Certificate of Highway mileage have been forwarded to our Finance and Administration Division for processing.

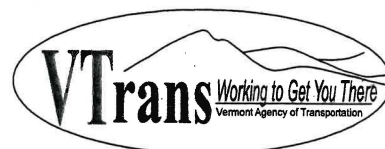
I think there might be an error with some of the Legal Trail figures, but since the town is not reimbursed for Legal Trails, I did not hold up the processing of the Certificate because of it. However, I would like to work with the town to determine if there is an error with my interpretation of the material submitted with the certificate.

I think there might have been an error when the mileage figure for the Steam Mill Brook Rd extension was transcribed onto the summary sheet submitted with the certificate (see enclosed copy of "Chittenden - 2007 AOT Map Changes"). On pages 2 and 3 the length of the trail portion is described as 2.90 miles, but it shows up as 2.79 on the summary sheet.

Also, the addition of the mileage of 1.40 for LT-2 had not been included on the summary sheet.

I made a minor change to the figures on the certificate for the Class 4 highways. Last year, the mileage for the Class 4 section of TH-19 had been recorded as 0.265 miles, and for TH-33 as 0.975 miles. Historically, the Agency doesn't record Class 4 mileage out to the thousandths position, so in processing this year's certificate I rounded the discontinued portion of TH-19 down to 0.26, and rounded up the Class 4 section of TH-33 to 0.98 miles. If the town approves, this change will be reflected on the 2007 Town Highway Map.

I've summarized these changes on the next page.



The following is a table summarizing the documentation submitted with the 2007 Certificate of Highway Mileage. The items in ***bold/italics*** are items I detailed on the previous page.

	Class 4 Addition	Class 4 Subtraction	Legal Trail Addition	Legal Trail Addition
TH-34 Lower Michigan Rd	+0.34			
TH-35 Steam Mill Brook Rd	+0.66			
TH-36 Fisk Rd	+1.44			
TH-37 Jimmy Dean Rd	+0.28			
TH-19 Mountain Spring Rd		-0.26 (rounded down from 0.265 on 4/25/07)		
TH-23 Wildcat Rd		-0.61		
LT-7 Wildcat Rd			+0.61	
LT-8 Old German Hill Rd			+0.37	
LT-9 Steam Mill Brook Rd ext			<b>+2.90</b> (instead of +2.79))	
LT-2 Baker Brook Trl			<b>+1.40</b>	
Legal Trail Verification Map Mileage (November 2006)				+3.43
<b>NET CHANGE FOR EACH CLASS</b>	<b>+2.72</b>	<b>-0.87</b> (I rounded this up to 0.88 on the certificate on 4/13/07. After looking more closely at the records in our town file, I would like to round this down to 0.87, S.Moulton 4/25/07)	<b>+5.28</b>	<b>+3.43</b>

The following table summarizes the changes in a modified Certificate format with the newly calculated totals for each class.

	Previous Mileage	Added Mileage	Subtracted Mileage	Class Total
Class 4	14.40	2.72	0.87	16.25
Legal Trail	3.43 *	5.28		8.71

\* Legal Trails shown on 2006 Legal Trail Verification Map

Please confirm if my interpretation of the certificate's supporting documentation is correct. If the town agrees with these changes I will process an error correction and the corrected numbers will appear on the 2007 Town Highway Map and on the 2008 Certificate of Highway Mileage.

If you have any questions, you can call me at 802-828-2109 or send e-mail to [sara.moulton@state.vt.us](mailto:sara.moulton@state.vt.us). Thank you.

Sincerely,

*Sara Moulton*

Sara Moulton  
Mapping & GIS Specialist

## Moulton, Sara

---

**From:** Ernie Buford [Ernest.Buford@uvm.edu]  
**Sent:** Wednesday, August 22, 2007 9:31 AM  
**To:** Moulton, Sara  
**Subject:** Re: Conspub - Chittenden Correction

Hi Sara,

Thanks for the revision data. I will forward this to Sean MacFaden for filing. We will be sure to include this information if and when we have funding to continue work on updates to the Conserved Lands Database. Thanks also for your interest in the database.

Best regards,  
Ernie Buford

Moulton, Sara wrote:

>  
> The Town of Chittenden has a correction for the Conspub data.  
> Included with the Certificate of Highway Mileage was a note that the  
> public land with POLYID #21010-002A in the Town of Chittenden became a  
> Chittenden Town woodlot several years ago. It had been labeled as  
> Brandon Town Forest or Brandon Municipal Forest. They also noted that  
> the configuration needed adjustment. (see attached)  
>  
>  
>  
> Sara Moulton  
>  
> Mapping & GIS Specialist  
>  
> Policy & Planning Division - Mapping Unit  
>  
> Vermont Agency of Transportation (VTrans)  
>  
> Tel: 802-828-2109  
>  
>  
>  
>

--

Ernest W. Buford  
Rubenstein School of Environment  
and Natural Resources  
University of Vermont  
Burlington, VT 05405  
(802) 656-3324  
<http://www.uvm.edu/envnr/sal/> -----



**CHITTENDEN**  
**2007 CHANGES TO OFFICIAL TOWN HIGHWAY MAP**

**SUMMARY:**

<b><u>Class 4</u></b>	<b><u>Additions:</u></b>	
TH-34	.34 mi	Lower Michigan Road
TH-35	.66 mi	Steam Mill Brook Road
TH-36	1.44 mi	Fisk Road
TH-37	<u>.28 mi</u>	Jimmy Dean Road
	<b>2.72 mi</b>	<b>Total Class 4 mileage to be added to Chittenden H'way Map</b>

**Subtractions:**

0.26 mi	<del>.265 mi</del>	Class 4 extension of Town Highway #19, discontinued
	<u>.610 mi</u>	Class 4 section of TH #23 to Trail
	<b>.875 mi</b>	<b>Total Class 4 mileage to be subtracted from Chittenden Highway Map</b>
	<b>1.845 mi</b>	<b>Net addition to Class 4 mileage on Chittenden H'way Map</b>

<b><u>Legal Trails</u></b>	<u>.61 mi</u>	.61 mi of TH #23 north of Mendon line
LT-7	<u>.373 mi</u>	Old German Hill Road
LT-8	<u>2.79 mi</u>	Steam Mill Brook Road extension
LT-9 2.90?	<b>3.773 mi</b>	<b>Total Legal Trail mileage to be added to Chittenden Highway Map</b>

**Other**

- Correction to Town Highway #32
- Correction to Brandon Municipal Forest ← *Notify about this*
- Corrections to Legal Trail Verification

*Sara notes*

*24-25 Apr 2007*

CERTIFICATE OF HIGHWAY MILEAGE

YEAR ENDING FEBRUARY 10, 2007

Fill out form, make and file copy with the Town Clerk, and mail ORIGINAL, before February 20, 2007 to: Vermont Agency of Transportation, Policy and Planning Division, Drawer 33, Montpelier, VT 05633.

We, the Selectmen or Aldermen or Trustees of CHITTENDEN in RUTLAND County

on an oath state that the mileage of highways, according to Title 19, V.S.A, Sec #305, added 1985, is as follows:

PART I - CHANGES TOTALS - Please fill in and calculate totals.

Legal Trails shown on 2006 Legal Trail Verification Map

Table with 6 columns: Town Highways, Previous Mileage, Added Mileage, Subtracted Mileage, Total, Scenic Highways. Rows include Class 1, Class 1 Lane, Class 2, Class 3, State Highway, Class 4, Legal Trail, and Total.

\* Mileage for Class 1 Lane, Class 4, and Legal Trail classifications is NOT included in total.

PART II - INFORMATION AND DESCRIPTION OF CHANGES SHOWN ABOVE.

1. NEW HIGHWAYS: Please attach Selectmen's "Certificate of Completion and Opening"

see attached for Class 4 and Legal Trails to be added

2. DISCONTINUED: Please attach SIGNED copy of proceedings (minutes of meeting)

1 discontinuance - see attached

3. RECLASSIFIED/REMEASURED: Please attach SIGNED copy of proceedings (minutes of meeting)

4. SCENIC HIGHWAYS: Please attach a copy of order designating/discontinuing Scenic Highways

IF THERE ARE NO CHANGES IN MILEAGE: Check box and sign below. [ ]

PART III - SIGNATURES - PLEASE SIGN.

Selectmen/ Aldermen/ Trustees Signatures:

Handwritten signatures of Robert E. Beaman, Cheryl, and others.

T/C/V Clerk Signature: Roberta Janoski

Date Filed: Feb. 07, 2007

Please sign ORIGINAL and return it for Transportation signature.

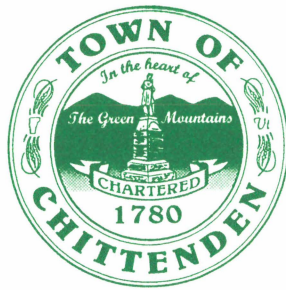
AGENCY OF TRANSPORTATION APPROVAL: Signed copy will be returned to T/C/V Clerk.

APPROVED:

Signature of Representative, Agency of Transportation: Jonathan Croft

DATE:

5/3/2007



Vermont  
Agency of Transportation

FEB 11 2007

Policy & Planning Division

February 7, 2007

Vermont Agency of Transportation  
Policy and Planning Division  
1 National Life Drive, Drawer 33  
Montpelier, Vermont 05633-5001

Enclosed please find the following from the Town of Chittenden:

- Certificate of Highway Mileage for the year ending February 10, 2007
- Minutes of the January 22, 2007 meeting at which the Selectboard voted to make the enclosed changes to the General Highway Map for the Town of Chittenden
- Detail for the enclosed changes

Please do not hesitate to contact us if you have any questions.

Thank you very much.

Sincerely,

Roberta Janoski  
Town Clerk

RJ/rad  
Encl.



CHITTENDEN  
2007 CHANGES TO OFFICIAL TOWN HIGHWAY MAP

SUMMARY:

Class 4      Additions:  
                 .34 mi      Lower Michigan Road  
                 .66 mi      Steam Mill Brook Road  
                 1.44 mi      Fisk Road  
                 .28 mi      Jimmy Dean Road  
**2.72 mi      Total Class 4 mileage to be added to Chittenden H'way Map**

Subtractions:  
                 .265 mi      Class 4 extension of Town Highway #19 discontinued  
                 .610 mi      Class 4 section of TH #23 to Trail  
**.875 mi      Total Class 4 mileage to be subtracted from Chittenden Highway Map**  
**1.845 mi      Net addition to Class 4 mileage on Chittenden H'way Map**

Legal Trails      .61 mi      .61 mi of TH #23 north of Mendon line  
                 .373 mi      Old German Hill Road  
                 2.79 mi      Steam Mill Brook Road extension  
**3.773 mi      Total Legal Trail mileage to be added to Chittenden Highway Map**

Other  
➤ Correction to Town Highway #32  
➤ Correction to Brandon Municipal Forest  
➤ Corrections to Legal Trail Verification

**CHITTENDEN**  
**2007 CHANGES TO OFFICIAL TOWN HIGHWAY MAP**

Class 4 Roads

**Lower Michigan Road**

See "A" on the enclosed highway map.

This old road runs westerly from Pittsfield Village into Chittenden. In Pittsfield it is TH #6, a Class 4 road as it approaches Pittsfield's west line. Exhibit 1 enclosed is an enlargement of a section of the federal topographic map of 1917 showing the road extending westward from the Pittsfield line into Chittenden to the Bayonne Camp, which was the nucleus of the Bayonne Manufacturing Company's large milling operation in the area. Exhibit 2 is a copy at scale of the 1917 topo indicating the road.

Length is .34 mile, 3 rods wide. Make it Town Highway #34.

**Steam Mill Brook Road**

See "B" and "C" on enclosed highway map.

This road is also on the 1917 topo map – see Exhibit 2. It begins just north of Steam Mill Brook on Legal Trail-2 (LT-2). Exhibit 3 enclosed is a copy of the 1869 survey for this road. We know it went further than the bridge given as the end point in the survey but only have documentation for the first .66 mi. Note on Exhibit 2 the trail extending northward beyond the surveyed .66 mi. Exhibit 4 is a current topo showing the surveyed road – "B" – as a solid red line and the continuation of the road – "C" – as a dotted red line which runs for 2.9 miles. It is clear on the ground but we cannot document it at this time.

Length of the surveyed road is .66 mi., 3 rods wide. Town Highway #35. Length of the trail portion is 2.9 mi.

**Fisk Road**

See "D" on enclosed highway map.

This road begins at a point on LT-4 about half way between Hewitt Brook and Billings Brook. It runs north from there to cross TH #11, runs along with the southernmost portion of TH #32, then veers northwest up into a Chittenden town woodlot. Part of this road was on the first "official" highway map in 1931 as a pent road but got lost somewhere along the way. Exhibit 5 is a copy of the 1931 highway map indicating the part of the road at issue. Exhibit 6 is a copy of a composite of 1893 and 1917 topo maps showing the full road.

Length is 1.44 mi., 3 rods wide. Town Highway #36.

**Jimmy Dean Road**

See "E" on enclosed highway map.

This road served farms in the southeast sector of Chittenden. Essentially it ran close to Jimmy Dean Brook. Access into town was from Killington, where it looped south and east, then north into Pittsfield where it connected with Route 100. Exhibit 7 is Jimmy Dean Road as shown on the Chittenden tax map.

Length in Chittenden is .28 mi, 3 rods wide. Town Highway # 37.

## **Locations of town lines in the Sherburne/Killington-Pittsfield-Chittenden corner are contradictory and will need to be addressed at some point.**

### **Town Highway #19 – Mountain Spring Road**

See “F” on enclosed highway map.

The Class 4 portion of Town Highway #19 was legally discontinued in October 2006. The discontinued portion runs .265 miles northward from the end of the Class 3 portion of TH #19 to its terminus. Exhibit 8 is the minutes of the discontinuance hearing on 10/7/06. Exhibit 9 is the Report of Findings and Order of Return regarding the discontinuance.

### Trails

#### **Steam Mill Brook Road Extension**

See “C” on enclosed highway map. As stated above, this portion of Steam Mill Brook Road is evident on the ground but we cannot document it at this time. It runs 2.9 mi. Please add it to the map as a trail, 2.9 mi, 3 rods wide.

#### **Old German Hill Road**

See “G” on enclosed highway map.

There was an important alteration to TH #2 – Holden Road, known formerly as German Hill Road – in the 1950s. The old road ran from a point about 360 feet south of Bridge 12, about .21 mi south to TH #11, west on TH #11, then about .16 mi north to rejoin the relocated road.

The landowner through whose property the old road runs agreed to let the Town retain its ROW and use it as a trail. Exhibit 10 is a copy of the relevant land record. Exhibit 11 shows the old road on the Chittenden tax map. Exhibit 12 is a schematic that shows the configuration more clearly.

Length is .373 mi, 3 rods wide.

### Other

#### **Town Highway #32**

Town Highway #32 didn't come out quite right on the 2006 highway map. It continues and connects with TH #13. See “H” on enclosed highway map.

#### **Brandon Municipal Forest**

“Brandon Municipal Forest” is no more. It became a Chittenden Town woodlot several years ago. Exhibit 13, from the Chittenden tax maps, shows the proper configuration of the parcel, at a scale of 1:5000.

#### **Legal Trail Verification Corrections**

- LT-2 is approximately 1.4 miles, 3 rods wide, formerly part of TH #10.

- The designation LT-5 for .4 mi of trail applies to Mendon, not Chittenden. We'd like to request that the label appear on the Mendon rather than the Chittenden map.
- The last .61 mi of TH #23 – beginning at a point 3.09 miles from the intersection of TH #23 and TH #1 – is currently on the highway map as Class 4 but should be a trail. See “I” on enclosed highway map. Exhibit 14 is a copy of the 1987 Report of Findings, Order and Return for the reclassification for that stretch of road.

6:15 PM

SELECTMEN MEETING

January 22, 2007

PRESENT: Robert Bearor, Dave Sargent, Donnaleen Farwell, Wendell Smith

GUESTS: Carolyn Schwalbe, Reggi Dubin, Trooper Robert Gilito, Susan Schreiberman,  
Bernie McGee

The following minutes have not been accepted by the Selectboard:

Minutes of January 8, 2007, approved as amended. Work orders signed.

**OLD BUSINESS:**

Corrections to Minutes – *Header*: Date should be January 8, 2007.

*Culvert*: Change the first sentence to “Ed Elliott asked if he could use the culvert washed out from Old Mckinlay Road for his own use.”

*Health Officer*: Replace the second sentence with “Bernie McGee will send a certified letter to the owner.”

Replace the last sentence with “The Health Officer will send a letter to the owner saying that if the property is not cleaned in seven days the town will clean it and send the bill to the owner.”

Safe Routes to School – Carolyn Schwalbe gave a presentation on the Safe Routes To School Program.

Listers – The Listers are looking for candidates.

Town Woodlots – The A. Johnson company has cut about 80% of the marked trees on the former CVPS lot, but the town has not received any payments. Stubby Smith will call the forester.

Highway Map - Dave Sargent made a motion that the following Town rights-of-way be added as Class 4 roads or trails to the 2007 Agency of Transportation Official Highway Map for the Town of Chittenden:

<u>Class 4 Roads</u>	<u>Trails</u>
Lower Michigan Road	Old German Hill Road
Steam Mill Brook Road	
Fisk Road	
Jimmy Dean Road	

Seconded by Stubby Smith. Passed unanimously.

Budget Changes - Donnaleen Farwell made a motion to rescind the original motion of January 8, 2007 to approve the General Fund budget of \$333,978.00 as there have been some changes to the General budget beyond the board's control. Seconded by Stubby Smith. Passed unanimously.

Dave Sargent made a motion to rescind the original motion of January 8, 2007 to approve the Highway budget of 358,900.00 as there have been some changes to the Highway budget beyond the board's control. Seconded by Stubby Smith. Passed unanimously.

Stubby Smith made a motion to accept the proposed highway budget of \$359,000.00 for the fiscal year starting July 1, 2007 and ending on June 30, 2008. Seconded by Dave Sargent. Passed unanimously.



**BOARD OF SELECTMEN**

**PAGE 2**

**January 22, 2007**

Dave Sargent made a motion to approve the General Fund (selectman's) budget of \$335,178.00 for the fiscal year starting July 1, 2007 and ending on June 30, 2008. Seconded by Donnaleen Farwell. Passed unanimously.

Health Officer – The board read the letter dated January 19, 2007, from the Health Officer regarding 241 Chittenden Road. The refrigerator doors must be removed immediately. The deadline for cleaning up the lot is February 3, 2007.

**NEW BUSINESS:**

Health Officer - The board read the letter dated January 19, 2007, from the Health Officer to Harry Schroeder of 353 Chittenden Road ordering the rental apartment be vacated due to unsafe conditions.

Fish Hatchery – The hatchery is called the Pittsford Fish Hatchery even though it is in Chittenden. Dave Sargent thought it would be a good idea to rename it the Dwight D. Eisenhower Fish Hatchery. The employees at the hatchery thought this is a good idea.

Dave Sargent made a motion to send a letter to our Congressional delegation asking that the name be changed from Pittsford to the Dwight D. Eisenhower Fish Hatchery. Seconded by Stubby Smith. Passed unanimously.

Correspondence – The state Property Valuation Review sent a letter acknowledging receipt of the petition for redetermination of values submitted by the listers. Noted.

Letter from the Vermont Coalition of Municipalities. Noted.

The Vermont Agency of Transportation sent a packet re: highway grant applications. The board will fill out the application.

The Vermont Symphony Orchestra requested a fireworks permit. Referred to the Fire Department.

Meeting adjourned on motion at 8:00 PM

Allan Arthur – Clerk

State of Vermont  
Policy & Planning Division-Mapping Unit  
1 National Life Drive, Drawer 33  
Montpelier, VT 05633-5001  
<http://www.aot.state.vt.us>

*Agency of Transportation*

Telephone: 802-828-2109  
Fax: 802-828-2334  
Email: [sara.moulton@state.vt.us](mailto:sara.moulton@state.vt.us)

January 23, 2007

Ms. Reggi Dubin  
178 Mountain Top Rd  
Chittenden, VT 05737

Dear Ms. Dubin:

This letter is in response to your email (copy enclosed).

Item #1

I have enclosed two copies of our Legal Trails Verification map for Chittenden. My supervisor, Johnathan Croft, also forwarded your verbal request for a copy of the Legal Trails Verification maps for the towns surrounding Chittenden. I've enclosed those also.

Item #2

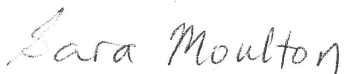
I am unable to find anything in our files which explains why there is a Discontinued road extending from the end of TH-7. No road of any kind appears on any of our maps prior to 1994. All of a sudden, in 1994, the Discontinued road appears on the map. We do not have any documentation in our files that explains why.

The most recent entry in our Record of Mileage Changes document for TH-7 is from 1974 and it states that TH-7 is 0.38 miles and is Class 4 for its entire length. We have not recorded any additions or reclassifications to it since then.

If you have any questions, please call me at 802-828-2109 or send e-mail to [sara.moulton@state.vt.us](mailto:sara.moulton@state.vt.us)

Thank you.

Sincerely,



Sara Moulton  
Mapping & GIS Specialist

## Moulton, Sara

---

**From:** Croft, Johnathan  
**Sent:** Monday, January 22, 2007 10:33 AM  
**To:** Moulton, Sara  
**Subject:** FW: Chittenden

**Follow Up Flag:** Follow up  
**Flag Status:** Flagged



bogberry.vcf (257  
B)

Sara,

FYI

Johnathan Croft  
VTrans Mapping Unit  
(802) 828-2600

-----Original Message-----

**From:** Reggi Ann Dubin [mailto:bogberry@sover.net]  
**Sent:** Thursday, January 18, 2007 5:55 PM  
**To:** Croft, Johnathan  
**Subject:** Chittenden

Johnathan.... two things:

#1 is embarrassing. We talked this morning about the "trails map" your department sent to towns with instructions and the form for this year's highway mileage report.

I spent upwards of two hours looking for the Chittenden copy this afternoon. The Selectboard gave it to me to work with and I don't recall passing it on to anyone else -- but I simply cannot find it! Could you please have someone mail me another copy? Pretty please? Send to Reggi Dubin, 178 Mountain Top Road, Chittenden, VT 05737. Many thanks.

#2: Town Highway #7 is a Class 4 road up in the northwest sector of Chittenden. Can someone please advise the source that led to the "D" status on the highway map going for the road from the end of the easternmost .38 mi up to Brandon?

thank you, Reggi



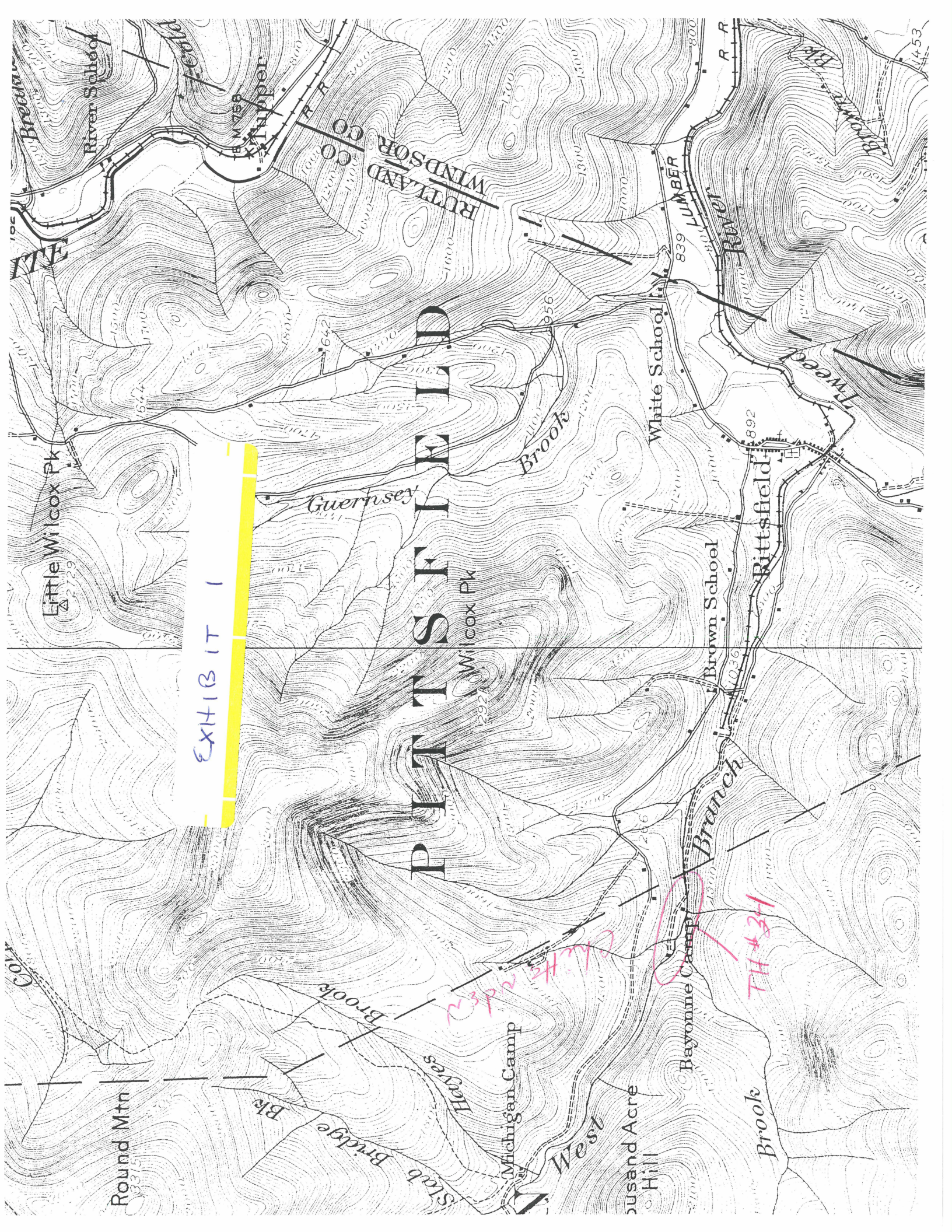


EXHIBIT 1

# PITTSFIELD

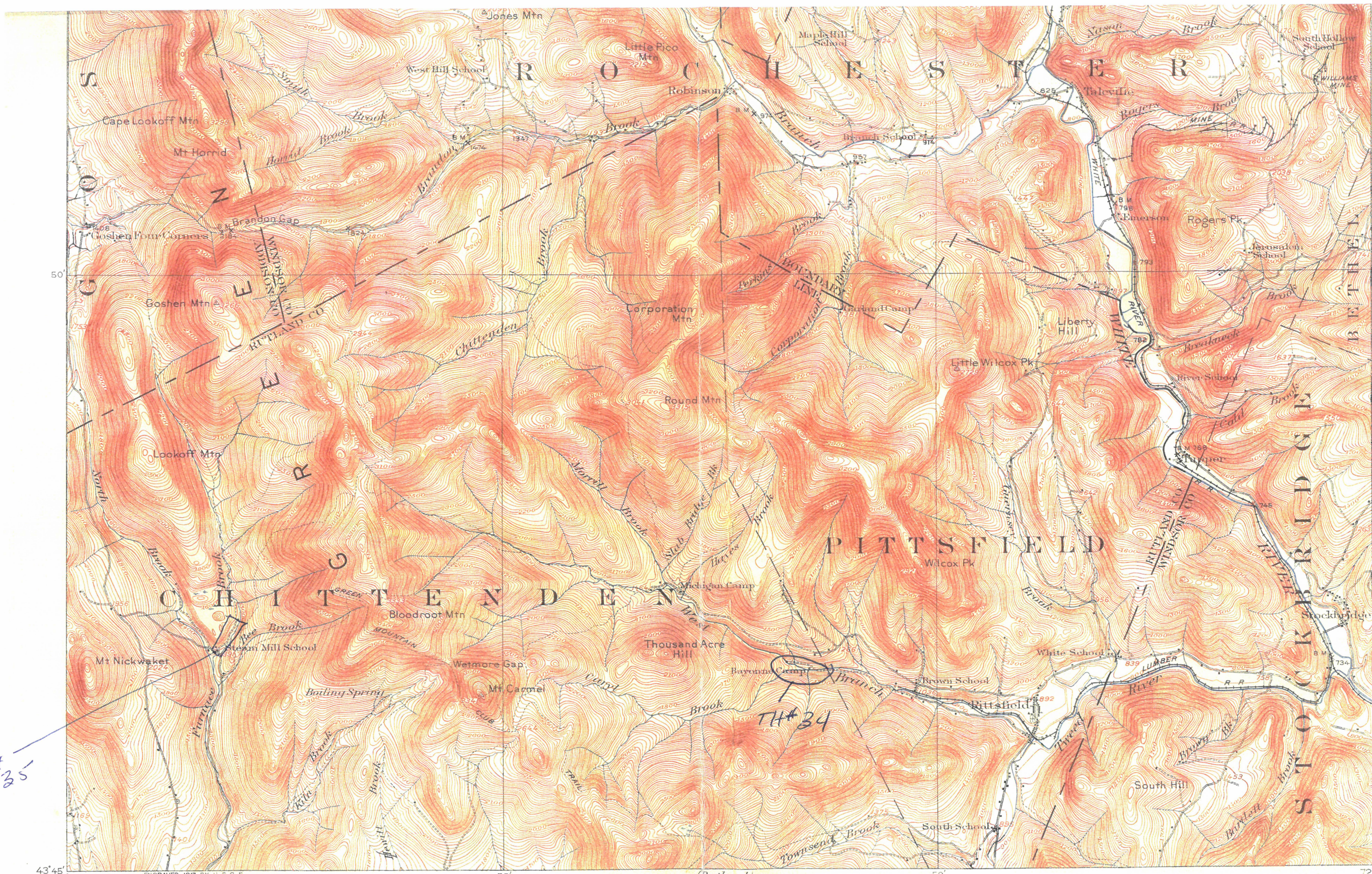
TH #34

232

232

232





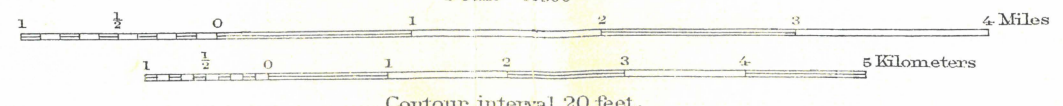
TH #35

TH #34

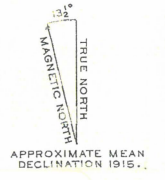
(Castleton)

(Woodstock)

ENGRAVED 1917 BY U.S.G.S.  
 R.B.Marshall, Chief Geographer.  
 Frank Sutton, Geographer in charge.  
 Topography by Hersey Munroe and K.F.Maxcy.  
 Control by U.S.Coast and Geodetic Survey,  
 D.H.Baldwin, and K.E.Schlachter.  
 Surveyed in 1915.



Contour interval 20 feet.



Edition of 1917, reprinted 1936  
 Polyconic projection. North American datum

ROCHESTER, VT.

EXHIBIT 2



Road, Petition for and Select Men order & Survey

Whereas a Petition in writing having been presented to us, in the following words,  
Whereas there is no public highway leading from what is known as the River Road North  
Chittenden to Messrs Pierce & Holdens Steam Saw Mill, Therefore we the undersigned  
believing such a Road necessary, and believing Sirs Pierce & Holden & others lawfully  
entitled to the same, We respectfully petition the Select Men of the Town of Chittenden  
to lay out such a road at the earliest opportunity.

Chittenden February 9, 1869. And signed by the following persons, viz:  
Royal W. Barnard, William Mullin, Gilbert Shelvy, Sylvester C. Tarble, Royal N. Churchill,  
M.L. Dow, C.R. Holden, Brine Denning, William C. Towns, William Burns & R. Harris.  
After giving notice to David Wetmore, the owner of the greater part of the land through  
which the proposed Road is to run, -- by leaving a written notice at his dwelling House,  
and to C.R. Holden, one of the petitioners and owner of the remainder of said land, by  
giving personal notice of the time and place of hearing the aforesaid petition and after  
looking over the ground, and hearing the parties we came to the conclusion that the  
public good requires a public highway. Therefore it is ordered that a Road be and is laid  
from a point in the Middle of the North side of the bridge over the East Branch (so called)  
of the Furnace River, on the road leading from David Wetmores to Brine Dennings, and  
near Brine Dennings Barn to a point in said road, three rods and nine links North 34°  
West (as the magnetic needle now points) which is the point of beginning of Said Road.  
thence North 59½° E 21 rods,  
thence North 26° E 20 rods,  
thence N. 48° E 18 rods to a point 6 rods & 12 links S. 23° E of the southeasterly corner  
of what is known as Browns old ore bed Boarding House,  
thence N. 30° E 30 rods,  
thence N. 32½° East 20 rods,  
thence North 18° East 31 rods,  
thence N. 21° West 10 rods,  
thence N. 7° E 5 rods to the middle of the South Side of the Bridge in Pierce & Holdens  
Steam Mill yard, south of said mi..]

The line described by the foregoing Survey is the center of the road, which is three rods  
wide.

Chittenden February 18, 1869, William O. Harrison, Surveyor

Chittenden Town Clerks Office  
25<sup>th</sup> day of February AD 1869  
Received and recorded by me  
Attest Reuben Harris, T.Clerk

William O. Harrison } Select  
J.A. David } Men  
A. Ranney }

EXHIBIT 3



- 12:407

407

I John Blackmer of  
 of Vermont. do hereby  
 to my full satisfaction  
 of Rutland & State of Vermont  
 is John C. Knight's his  
 lying & being in Chittenden  
 as follows. To wit:-  
 to me the John Blackmer  
 9<sup>th</sup> day of November 1868  
 & land records in Chittenden  
 made to said Deed,  
 regained premises with  
 in C. Knight's his heirs  
 use, benefit & behoof  
 my heirs executors and  
 Knight his heirs and  
 presents. I am well seized  
 & fee simple & have good  
 and form as above with  
 embraces whatsoever  
 or do by these presents  
 defend the above granted  
 Knight his heirs & assigns  
 ever  
 this 16<sup>th</sup> day of Jan'y. A.D. 1869  
 John Blackmer (Seal)  
 the 16<sup>th</sup> day of January  
 & John Blackmer  
 it and acknowledged  
 men Clerk,  
 15<sup>th</sup> day of February  
 recorded,  
 is, Towns Clerk,  
 - deed,  
 is, Towns Clerk,

Whereas a Petition in writing having been presented to us, in  
 the following words, Whereas there is no public highway leading from  
 what is known as the River Road North Chittenden to Messrs,  
 Pierce & Holdens Steam Saw Mill, Therefore we the undersigned  
 believing such a Road necessary, and believing Srs Pierce &  
 Holden & others lawfully entitled to the same, We respectfully  
 petition the Select Men of the Town of Chittenden to lay out such  
 a road at the earliest opportunity,

Chittenden February 9, 1869, and signed by the following  
 persons, viz:- Royal W. Barnard, Williams Mullin, Gilbert  
 Shelby, Sylvester C. Warble, Royal N. Churchill, M. L. Dow,  
 C. R. Holden, Brine Denning, Williams C. Towns, William  
 Burns, & R. Harris,

after giving notice to David Wetmore,  
 the owner of the greater part of the land, through which the  
 proposed Road is to run, - by leaving a written notice at  
 his dwelling house, and to C. R. Holden, one of the petitioners,  
 and owner of the remainder of said land, by giving personal  
 notice of the time and place of hearing the aforesaid petition  
 and after looking over the ground, and hearing the parties  
 we came to the conclusion that the public good requires a public  
 highway, therefore it is ordered that a Road be and is laid  
 from a point in the middle of the North side of the bridge over  
 the East Branch (so called) of the Furnace River, on the Road  
 leading from David Wetmores to Brine Denning's, and near  
 Brine Denning's Barn to a point in said Road, three rods and  
 nine links North 34° West (as the magnetic needle now points)  
 which is the point of beginning of said Road - thence N 37° E,  
 23 rods, thence North 59½° E, 21 rods, thence North 26° E, 20  
 rods, thence N. 48° E, 18 rods to a point 6 rods & 12 links S.  
 23° E, of the southeasterly corner of what is known as Brown's  
 old ore bed Boarding House, thence N. 30° E, 30 rods, thence N.  
 32½° East 20 rods, thence North 18° East, 31 rods, thence N 21°  
 West 10 rods, thence North 7° E, 5 rods, to the middle of the south  
 side of the Bridge, in Pierce & Holdens Steam Mill yard,  
 south of said Mill, The line described by the foregoing Survey  
 is the center of the road, which is three rods wide,

Chittenden February 18, 1869, Williams C. Harrison, Surveyor  
 Chittenden Towns Clerk's office }  
 25<sup>th</sup> day of February A.D. 1869, Received J. A. Davis } Select  
 & recorded, By me A. Ramsey } Men  
 Attest Reuben Harris 5. Clerk



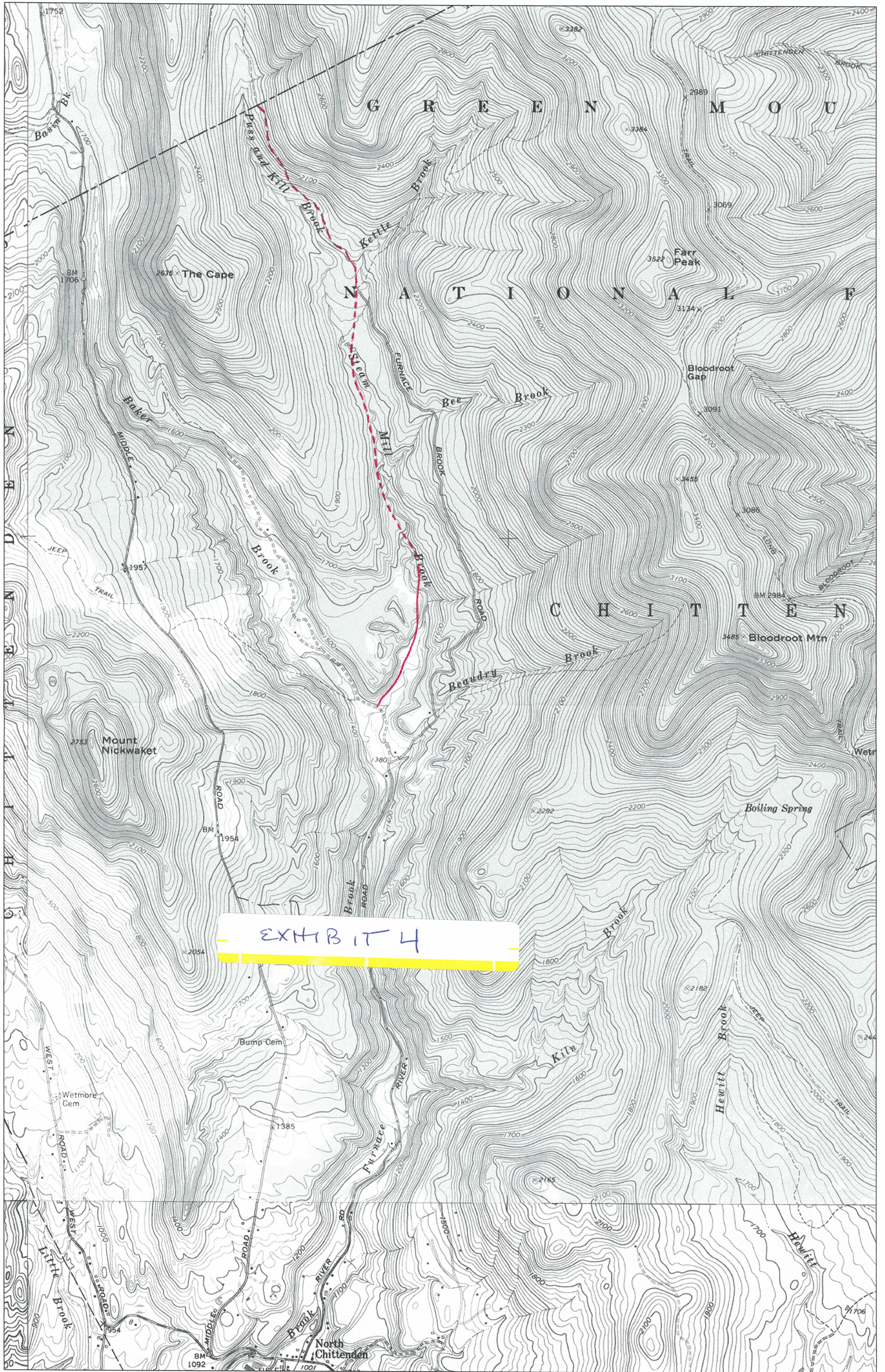


EXHIBIT 4



BRANDON

UTLAND

PITTSFORD

RUTLAND

PITTSFORD

HOLDEN

CHITTENDEN (Slab City)

GOSHEN

C H I T T E N D E N

ROCHESTER

PENT RD. 0.5

*Pent Fish Road*

PENT RD. 0.4

CHITTENDEN RES.

SECTION TAKEN OVER INTO STATE HIGHWAY SYSTEM IN 1935

PITTSFIELD

LEGEND

0.20 mi	STATE ROADS	
11.74	STATE AID ROADS	
23.86	TOWN ROADS	
35.80 mi. Total		

CHITTENDEN  
SCALE 1 INCH = 1 MILE

*SubB. to 3/16/31* @GLP

EXHIBIT 5

MENDON

N. SHERBURNE

SHERBURNE

UTLAND

PITTSFORD

RUTLAND

PITTSFORD

HOLDEN

CHITTENDEN (Slab City)

GOSHEN

C H I T T E N D E N

ROCHESTER

PENT RD. 0.5

*Pent Fish Road*

PENT RD. 0.4

CHITTENDEN RES.

SECTION TAKEN OVER INTO STATE HIGHWAY SYSTEM IN 1935

PITTSFIELD

LEGEND

0.20 mi	STATE ROADS	
11.74	STATE AID ROADS	
23.86	TOWN ROADS	
35.80 mi. Total		

CHITTENDEN  
SCALE 1 INCH = 1 MILE

*SubB. to 3/16/31* @GLP

MENDON

N. SHERBURNE

SHERBURNE

UTLAND

PITTSFORD

RUTLAND

PITTSFORD

HOLDEN

CHITTENDEN (Slab City)

GOSHEN

C H I T T E N D E N

ROCHESTER

PENT RD. 0.5

*Pent Fish Road*

PENT RD. 0.4

CHITTENDEN RES.

SECTION TAKEN OVER INTO STATE HIGHWAY SYSTEM IN 1935

PITTSFIELD

LEGEND

0.20 mi	STATE ROADS	
11.74	STATE AID ROADS	
23.86	TOWN ROADS	
35.80 mi. Total		

CHITTENDEN  
SCALE 1 INCH = 1 MILE

*SubB. to 3/16/31* @GLP



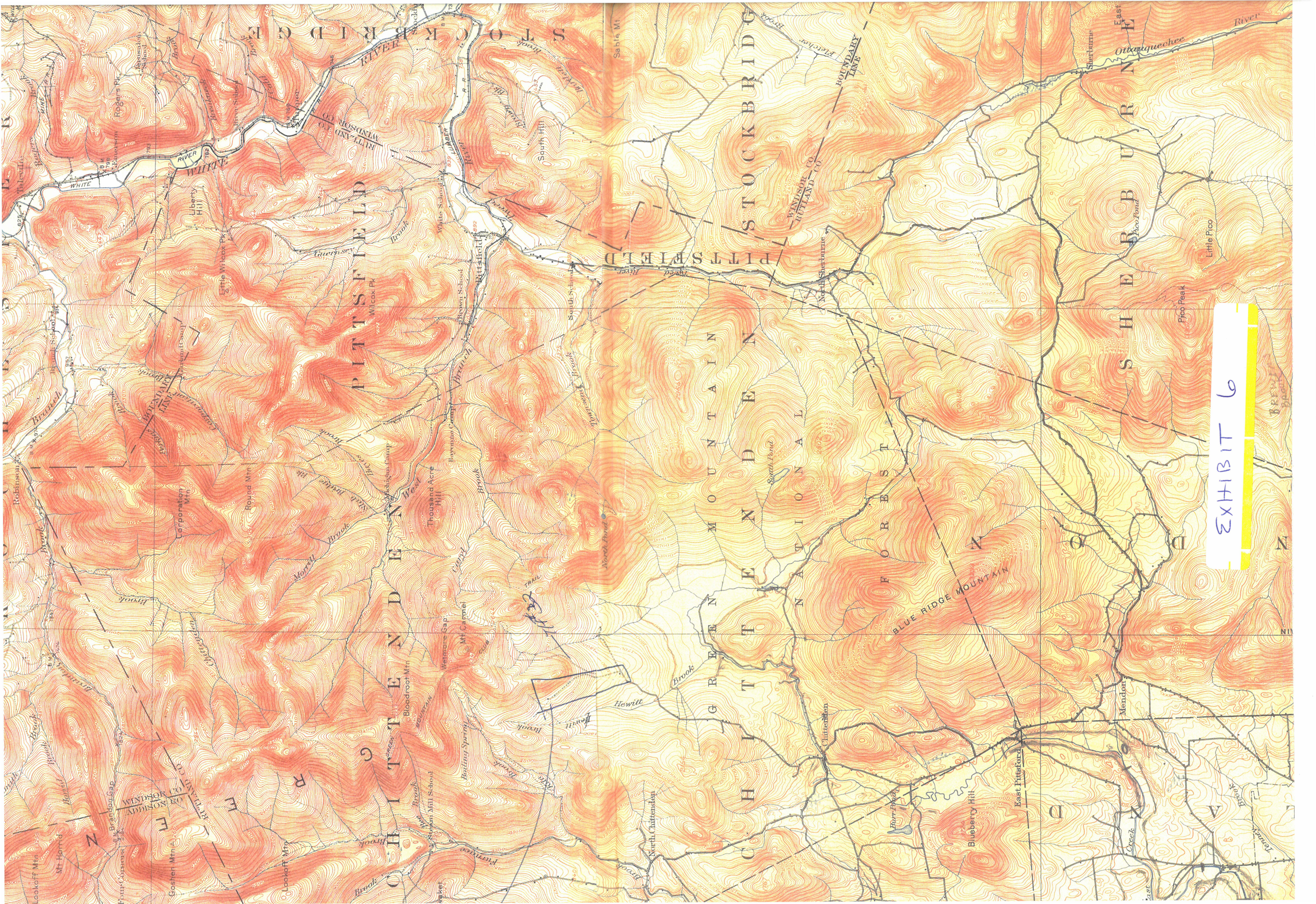


EXHIBIT 6



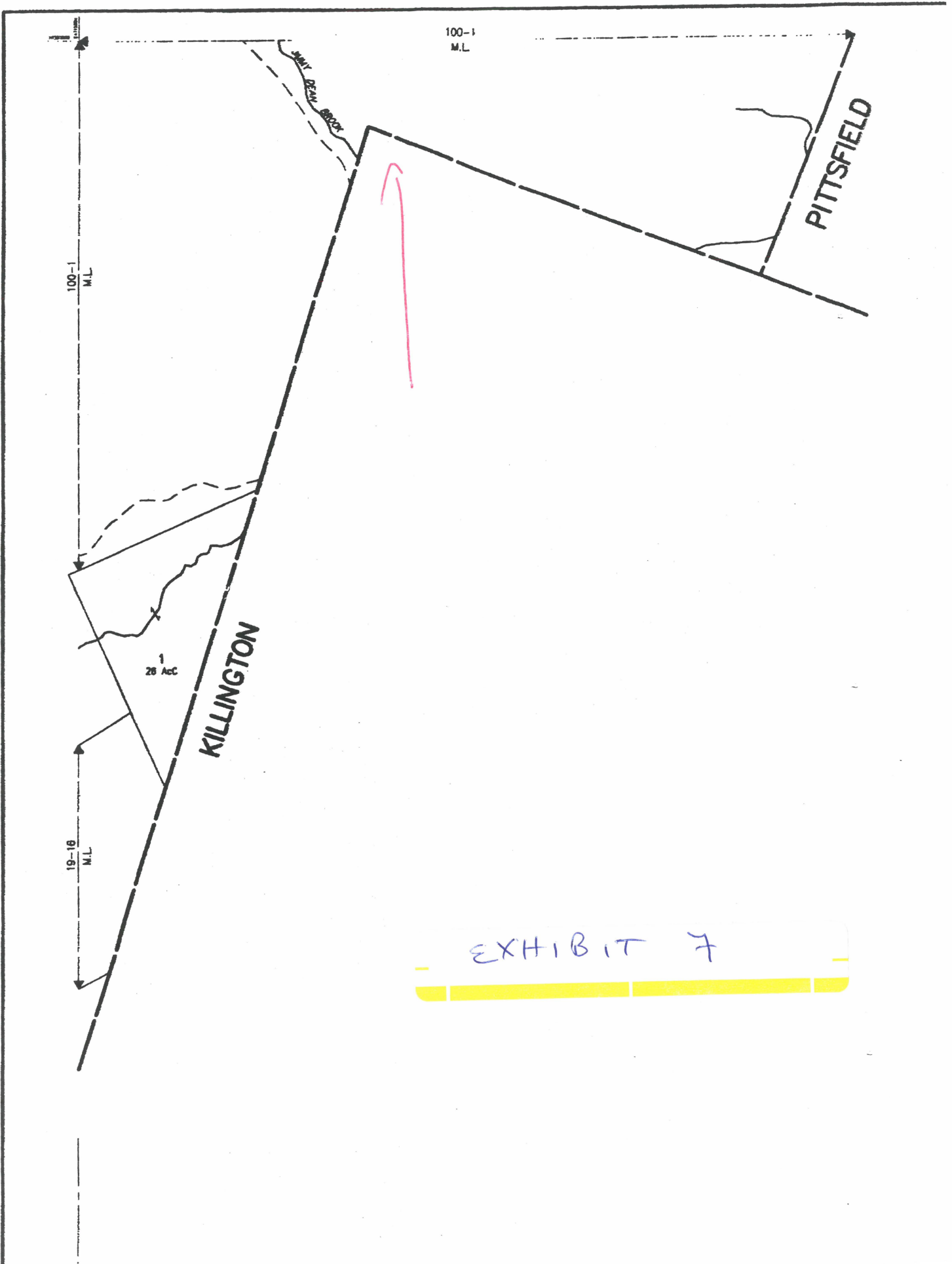


EXHIBIT 7

**MINUTES OF DISCONTINUANCE HEARING  
REGARDING A PORTION OF TOWN HIGHWAY #19  
HELD BY THE CHITTENDEN SELECTBOARD  
OCTOBER 7, 2006**

PRESENT:

**Selectboard:** Robert Bearor, Bernard Congdon, David Sargent, Wendell Smith

**Other:** Patricia Bick, Robert Bienieki, James F. Carroll Esq., Reggi Ann Dubin, Stanley Fishkin, Erin Gallivan Esq., Patrick Max

Meeting called to order at 9:05am at the south line of the Fishkin-Marshall property where it intersects with Town Highway #19.

Acknowledging Robert Bearor as the Selectboard Chair, Attorney Carroll states the purpose of the meeting – to conduct a discontinuance hearing for a portion of Town Highway #19, otherwise known as Mountain Spring Road. He reads into the record the Notice of Discontinuance and the technical description of the portion of Town Highway #19 under consideration for discontinuance, as shown on a 1973 Landvest survey of what is now the Fishkin-Marshall property. He then reviews the steps previously taken in accordance with Title 19:

- 1) On September 6, 2006, at least 30 days prior to examination and Hearing, Notice of Discontinuance was sent by certified mail, return receipt requested, to the Town of Chittenden Planning Commission, abutting landowners (Patrick Max & Patricia Bick and Cynthia & Robert Bienieki) and landowners through whose property the relevant portion of Town Highway #19 passes (Stanley Fishkin and Nancy Marshall).
- 2) On October 3, 2006, the Notice of Discontinuance was sent to the Commissioner of Forest, Parks & Recreation.
- 3) On September 27, 2006, at least 10 days prior to examination and Hearing, the aforesaid Notice of Discontinuance was posted in the Town Clerk's office and published in the *Rutland Herald*.

Attorney Carroll reads the October 4, 2006 letter from Mike Fraysier, ANR Lands Director, Department of Forests, Parks and Recreation. Relative to this road discontinuance, Mr. Fraysier writes: "Normally it is the Department's policy to encourage towns to continue ownership of rights-of-way where they are of sufficient length or location to be of value to snowmobilers, cross-country skiers, hikers, horseback riders, and other recreational users. However, in this specific situation the Department agrees with the terms of the Settlement Agreement provided the Green Road is reclassified as a legal trail as specified in Section 3 of the Settlement Agreement.

Mr. Max says he has no objection to discontinuing the portion of Town Highway #19 under discussion but questions the wisdom of a landowner blocking off a town road and discussing it with the town several years later. He also expresses dismay at delivery trucks being forced to turn around on his property because there is no place to do so at the entrance to the Fishkin-Marshall property, but says he can tolerate the situation if there is no simple remedy.

Mrs. Bick states stronger objections to the level of traffic forced to turn around on the Max-Bick property and says she feels that delivery trucks delivering to Fishkin-Marshall should be able to turn around on the Fishkin-Marshall property.

EXHIBIT 8



Mr. Congdon notes that the loss of the previous turnaround, forcing people to turn on the Max-Bick property, has been discussed by the Selectboard and is something that may have to be addressed at some point. He expresses concern that future landowners may not be as accommodating as the current landowners abutting the Fishkin-Marshall property in allowing town trucks to use their property in the absence of a proper turnaround.

Mr. Smith moves to make the Landvest survey part of the official record. Mr. Sargent seconds. Approval unanimous. A copy is attached hereto as Exhibit A.

Mr. Sargent moves to make the letter from the Department of Forest, Parks & Recreation part of the official record. Mr. Congdon seconds. Approval unanimous. A copy is attached hereto as Exhibit B.

Attorney Carroll frames a discontinuance motion as follows:

The Selectboard of the Town of Chittenden hereby moves to approve the discontinuance, pursuant to Title 19, of a portion of Town Highway #19, otherwise known as Mountain Spring Road, described as follows: that portion of the road now called Town Highway #19/Mountain Spring Road extending from the south line of the Fishkin-Marshall property to the northern terminus of Mountain Spring Road. That portion of the road to be discontinued is further described as beginning at the south line of the Fishkin-Marshall property as depicted on a survey by Michael Engineering Co. entitled "Landvest Inc., Chittenden, Vermont" and dated December 10, 1973, and proceeding in a northerly direction a distance of approximately 1,400 feet (.265 miles) to its terminus. As part of the motion, the Board directs its attorney to prepare findings and conclusions consistent with that motion.

Mr. Sargent so moves. Mr. Congdon seconds. Approval unanimous.

Mr. Smith moves to adjourn the Hearing. Mr. Sargent seconds. Approval unanimous.

Hearing adjourns at 9:25am.

Respectfully submitted,

Reggi Ann Dubin

REPORT OF FINDINGS,  
ORDER and RETURN  
REGARDING DISCONTINUANCE OF A PORTION OF  
TOWN HIGHWAY NO. 19,  
TOWN OF CHITTENDEN

The undersigned Selectmen of the Town of Chittenden hereby issues their written Report of Findings, Order and Return pursuant to 19 V.S.A. §711 as follows:

1. On the 24th day of July, 2006, the Selectmen, pursuant to 24VSA§708(a), initiated proceedings on their own Motion to Discontinue a portion of Town Highway No. 19 – described as follows:

That portion of the pent road now called Mountain Spring Road (T.H. #19) extending from the south line of the Fishkin/Marshall property to the northern terminus of Mountain Spring Road.

That portion of Mountain Spring Road to be discontinued is further described as commencing at the Fishkin/Marshall south boundary as depicted on a survey prepared by Michael Engineering Co. and titled Landvest, Inc., Chittenden, Vermont and dated December 10, 1973, a copy of which is attached hereto as Exhibit A and proceeding in a generally northerly direction a distance of approximately 1,400 feet (.265 miles) to its terminus.

2. On the 6th day of September, 2006, at least 30 days prior to examination and Hearing, Notice of Discontinuance, a copy of which is attached hereto, incorporated herein and marked Exhibit B, was sent by certified mail, return receipt requested, to the Town of Chittenden Planning Commission and the following interested parties:

Abutting Landowners and Landowners  
Through Whose Property the Road Passes

- A. Patricia Bick & Patrick Max, 52 Mountain Spring Road, Chittenden, Vermont 05737
  - B. Cynthia & Robert Bienieki, 49 Mountain Spring Road, Chittenden, Vermont 05737
  - C. Nancy Marshall & Stanley Fishkin, P.O. Box 39, Chittenden, Vermont 05737
3. On the 3<sup>rd</sup> day of October, 2006, the Notice of Discontinuance was sent to the Commissioner of Forest, Parks & Recreation pursuant to 19 V.S.A. §775. A copy of the Commissioner's response is attached hereto as Exhibit C.
  4. On the 27th day of September, 2006, at least 10 days prior to examination and Hearing, the aforesaid Notice of Discontinuance, Exhibit B, was posted in the Town Clerk's office and published in the *Rutland Herald*. A copy of the newspaper Notice is attached hereto, marked Exhibit D, and incorporated herein.
  5. On the 7th day of October, 2006, the Selectmen conducted an examination and held a hearing pursuant to the Notice of Discontinuance.

EXHIBIT 9

6. Present at the examination and hearing on the 7<sup>th</sup> day of October, 2006, were the following Selectmen: Robert Bearor, Chair; Bernard Congdon; Wendell Smith, Jr.; and David J. Sargent. Also present were: Patricia Bick; Patrick Max; Erin Gallivan, Esq.; Stanley Fishkin; Robert Bienieki and Reggi Dubin.
  
7. At the examination and Hearing, the Selectmen heard the comments of interested parties and inspected the premises. Based upon the information and comments presented at the hearing and the provisions of a certain Settlement Stipulation filed in the matter of *Fishkin, et al. v. Town of Chittenden, et al.*, Docket No. 345-6-04Rdev and approved by the Rutland Superior Court on September 22, 2006 ("Settlement Stipulation"), the Chittenden Selectboard hereby finds and concludes that the public good, necessity and convenience of the inhabitants of the Town of Chittenden require that the portion of Town Highway No. 19 described above be discontinued for the following reasons:
  - a) The portion of Town Highway 19 which is being discontinued is a pent road lying entirely within the property of Stanley Fishkin and Nancy Marshall.
  - b) The portion of Town Highway 19 which is being discontinued commences at the southern property line of the Fishkin/Marshall Property and terminates within the Fishkin/Marshall Property.
  - c) The portion of Town Highway 19 which is being discontinued does not provide public access to or from any other property except the Fishkin/Marshall Property.
  - d) The Settlement Stipulation provides that this portion of Town Highway 19 be discontinued.
  
8. ORDER. Based upon the findings and conclusions, as set forth above, the exhibits attached hereto, the testimony of the interested persons and the terms of the Settlement Stipulation, it is hereby Ordered that the portion of Chittenden Town Highway No. 19, otherwise known as Mountain Spring Road, which is hereinabove described in paragraph 1 only, is hereby discontinued.

DATED: 10/9/06

TOWN OF CHITTENDEN

Robert Bearor  
Robert Bearor, Selectman

Wendell Smith, Jr.  
Wendell Smith, Jr.

Bernard Congdon  
Bernard Congdon, Selectman

Donnaleen Farwell  
Donnaleen Farwell, Selectman

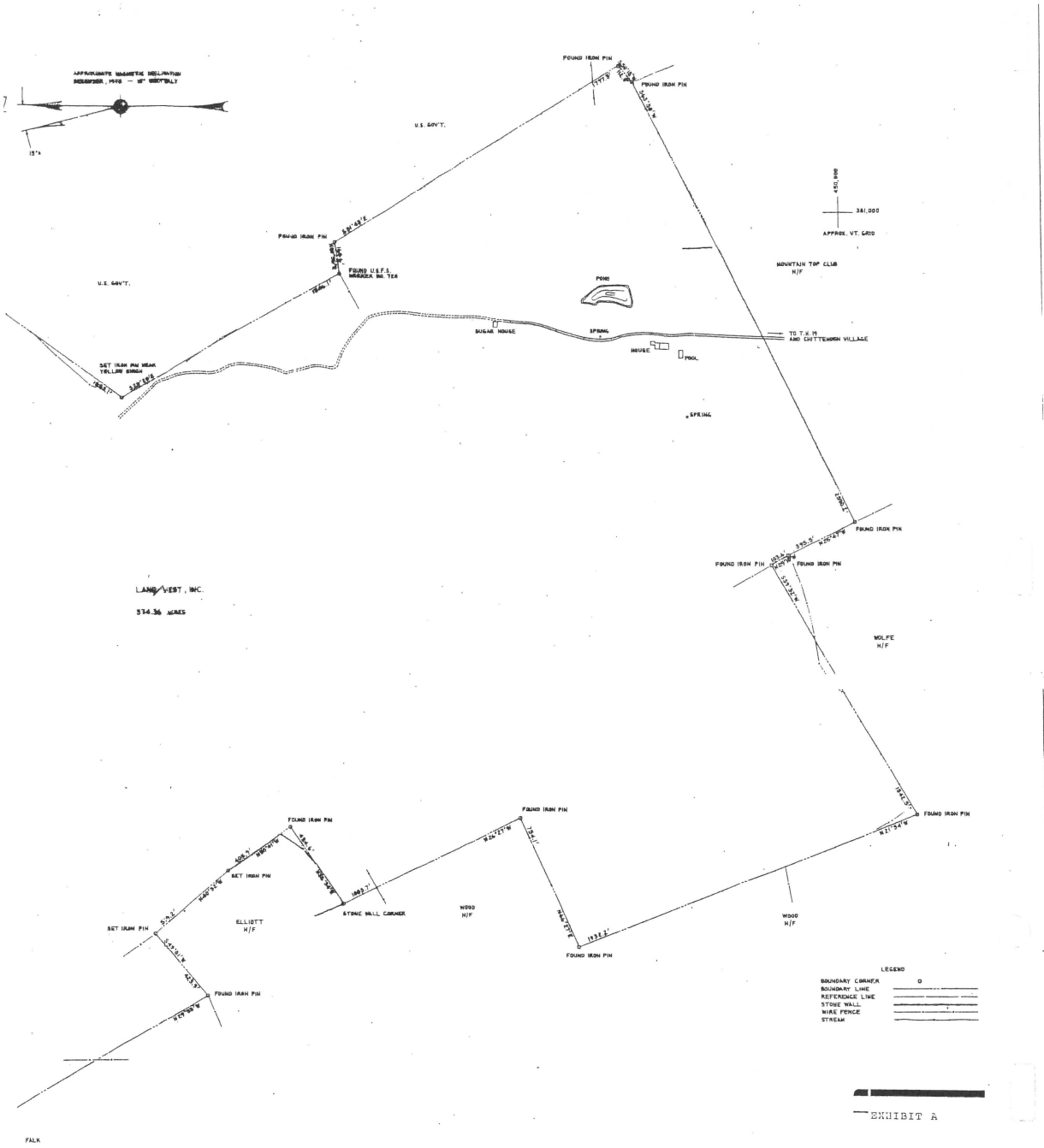
David J. Sargent  
David J. Sargent, Selectman

CERTIFICATE OF TOWN CLERK (2)

I hereby certify that on the 10 th day of OCTOBER,  
2006, I recorded the foregoing Report of Findings, Order  
And Return regarding Town Highway No. 19.

DATED: Oct. 10, 2006

Rosemary Janoski  
Town Clerk



LAND VEAT, INC.  
374.36 ACRES

LEGEND

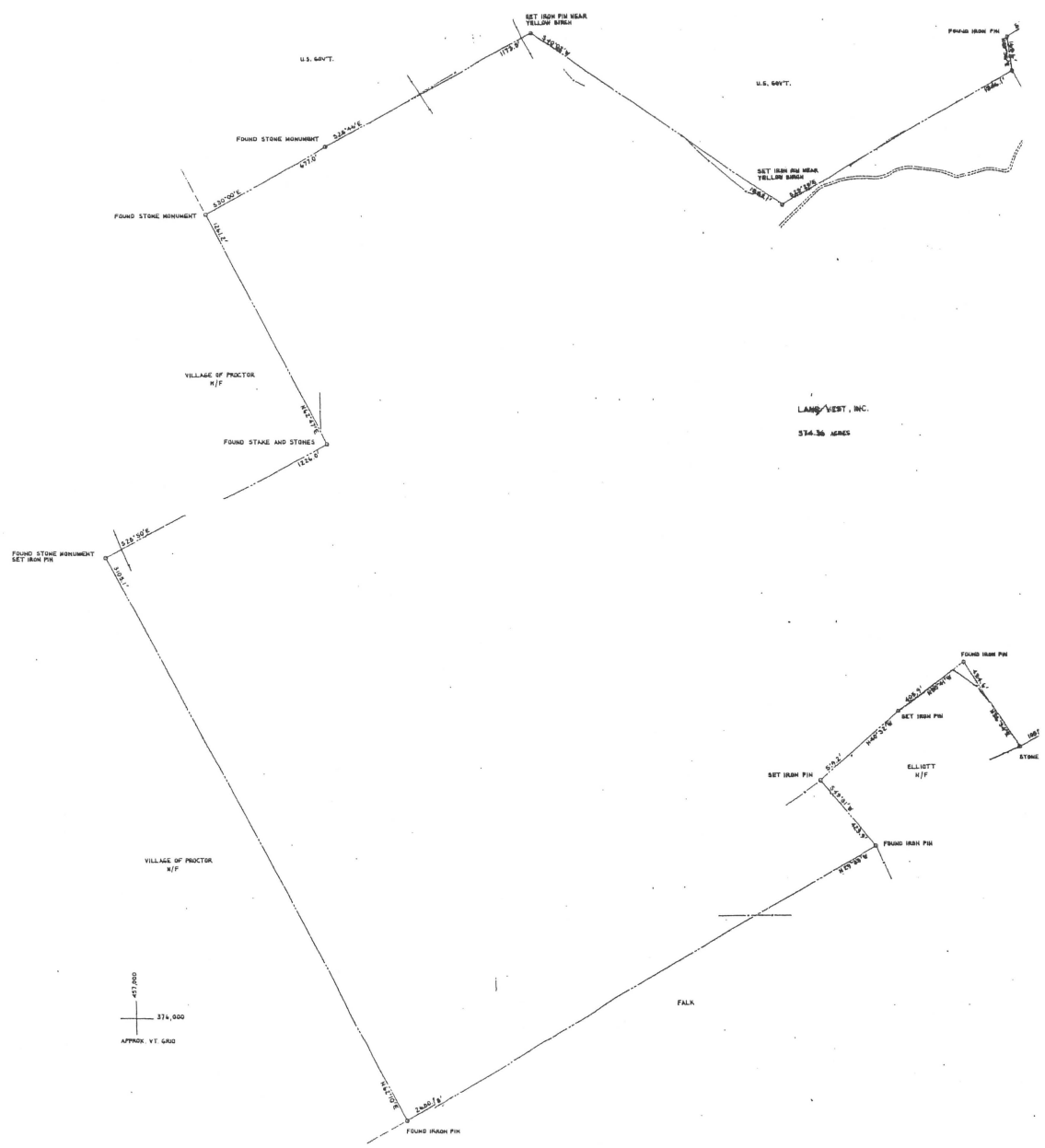
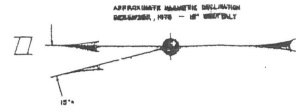
BOUNDARY CORNER	○
BOUNDARY LINE	—
REFERENCE LINE	---
STONE WALL	— — —
WIRE FENCE	— · — · —
STREAM	~~~~~

EXHIBIT A

CERTIFICATE  
I, RALPH J. MICHAEL, LAND SURVEYOR REGISTERED IN VERMONT,  
HEREBY CERTIFY THAT I HAVE CAUSED A SURVEY TO BE MADE OF  
THE LANDS SHOWN HEREON, AND THAT THIS PLAN IS A TRUE  
REPRESENTATION THEREOF.

MICHAEL ENGINEERING COMPANY PLYMOUTH, VERMONT			
OWNER	LAND VEAT, INCORPORATED		
LOCATION	CHITTENDEN, VERMONT		
TITLE			
SURVEY	RJM	DESIGN	DRAWN ACJ
CHECKED	RJM	FIELD NO	DWG NO
		73-12	73-12.1
DATE DEC. 8, 1973		SCALE	

NOTES  
BEARINGS ARE WITH RESPECT TO APPROXIMATE TRUE NORTH.  
MEASUREMENTS WERE BY TRANSIT-STATION TRAVERSE.  
BOUNDARIES WERE LOCATED BY PHYSICAL EVIDENCE OF FENCES  
AND SLAZED LINES. MONUMENTS WERE FOUND OR SET AS FOLLOWS:  
REFERENCE IS MADE TO PREVIOUS SURVEYS BY YOUNG AND  
HEWENHUT IN 1851, AND BY RUBLE AND HOPKINS IN 1867 AND 1868.





TOWN OF CHITTENDEN, VERMONT

NOTICE OF DISCONTINUANCE OF A PORTION OF TOWN HIGHWAY 19

Notice is hereby given pursuant to 19VSA§709 that the Selectmen of the Town of Chittenden will conduct an examination and hold a hearing on the discontinuance of a portion of Town Highway 19 more particularly described as follows:

Town Highway No. 19 – specifically, that portion of the pent road now called Mountain Spring Road extending from the south line of the Fishkin/Marshall property to the northern terminus of Mountain Spring Road.

The Selectmen will conduct their examination and said public hearing on Saturday, October 7, 2006, at 9 o'clock in the morning, at the south boundary of the Fishkin/Marshall property on Mountain Spring Road and at such other locations and times as may be announced at adjournment of said public hearing.

DATED this 6th day of September, 2006.

Robert Bearor Robert Bearor

Bernard Congdon Bernard Congdon

Donnaleen Farwell Donnaleen Farwell

David Sargent David Sargent

Wendell Smith Wendell Smith

Town of Chittenden Selectboard

EXHIBIT B

**State of Vermont****Department of Forests, Parks and Recreation**

103 south Main Street, 10 South

Waterbury, VT 05671-0601

[www.vtfpr.org](http://www.vtfpr.org)

[fax] 802-244-1481

[tdd] 800-253-0191

*Agency of Natural Resources*

802-241-3693

State Lands Division

October 4, 2006

Town of Chittenden Selectboard

PO Box 89

Chittenden, VT 05737

Dear Board Members:

We are in receipt of the notice pursuant to the requirements of Title 19 V.S.A. § 775 that you propose to discontinue portions of land in the Town known as Chittenden as a result of the recent Settlement Agreement between the Town of Chittenden and Stanley Fishkin & Nancy Marshall. Normally it is the Department's policy to encourage towns to continue ownership of highway rights-of-way where they are of sufficient length or location to be of value to snowmobilers, cross-country skiers, hikers, horseback riders, and other recreational users. However, in this specific situation the Department agrees with the terms of the Settlement Agreement provided the Green Road is reclassified as a legal trail as specified in Section 3 of the Settlement Agreement.

Enclosed is a copy of the "Town Policy on Class 4 Roads and Trails," issued by the Vermont Trails and Greenways Council. In addition, you will find a copy of the Department's policy on road discontinuance. The Department asks that the Town of Chittenden announce the reclassification hearing for the Green Road with more advance notice in order to give the Department sufficient time to assess the impacts of the Settlement Agreement's terms as they relate to future recreational use of the Green Road.

This Department will not be represented at your meeting on October 7, 2006 but we ask that this letter and attachments be entered into the proceedings. We also request that local trail organizations such as snowmobile clubs be notified of proposed reclassifications.

Thank you for contacting us on this matter. We always appreciate the opportunity to comment on these important recreation resources.

Sincerely yours,

A handwritten signature in black ink, appearing to read "Mike Frayster".

Mike Frayster  
ANR Lands DirectorCc: Trails Coordinator, VAST  
FPR District Trails Coordinator, Gary Salmon  
Planning Office, AOT

Regional Offices: Barre • Essex Junction • Rutland • Springfield • St. Johnsbury

EXHIBIT C

# The flu a pair

It can won  
leading to pneum

**Keep yourself health**  
Association & Hospice, with sup  
for Adult Immunization in the  
clinics. RAVNAH's team of exp  
you receive protection against

**32 Teams ...**  
**11 Weeks**  
Find comprehensive high school  
football coverage at  
[www.rutlandherald.com/football](http://www.rutlandherald.com/football)

**AI'S Furniture Warehouse** **FREE DELIVERY within 100 miles**

**10% off Total Purchase**  
not valid with any other offer

**Quality Furniture at Discount Prices**  
**SOMETHING FOR EVERYONE**  
Small enough to know you... Big enough to serve you!  
RTE 7B, NORTH CLARENDON, VT 802-775-4560  
Open Daily 10am-6pm • Sunday 11am-4pm

**TOWN OF CHITTENDEN, VERMONT**  
**NOTIFICATION OF DISCONTINUANCE OF TOWN HIGHWAY**

Notice is hereby given pursuant to 19 VSA §709 that the Selectboard of the Town of Chittenden will conduct an examination and hold a hearing on the discontinuance of a portion of Town Highway 19 more particularly described as follows:

Town Highway 19, known as Mountain Spring Road, beginning at the south boundary line of the Fishkin/Marshall property to the north terminus of Mountain Spring Road.

The Selectboard will conduct its examination and said public hearing on Saturday, October 7, 2006, at 9 o'clock in the morning, at the south boundary of the Fishkin/Marshall property on Mountain Spring Road and at such other locations and times as may be announced at adjournment of said public hearing.

Dated this 27th day of September, 2006  
Robert Bearor  
Bernard Congdon  
Donnaleen Farwell  
David Sargent  
Wendell Smith  
Chittenden Selectboard

09/27/06

**EXHIBIT D**

Report of Findings, Order and Return Regarding Discontinuance of a Portion of Town Highway No. 19, Town of Chittenden received for record this 10th day of October A.D. 2006 at 2 o'clock no minutes P.M.

Attest:  
*Rolerta Janoski*  
Town Clerk

Location	Date
Rutland Town	Wed. Oct.
Poultney	Mon. Oct.
Brandon	Mon. Oct.
Rutland City	Wed. Oct.
Dorset	Mon. Oct.

**High Ri**

Location	Date
Wallingford	Fri. Nov. 11
Rutland Town	Tues. Nov.
Danby	Thurs. Nov.
Fair Haven	Fri. Nov. 11
Ira	Fri. Nov. 11
Rutland City	Tues. Nov.
Dorset	Fri. Dec. 1
Rutland Town	Tues. Dec.

**How much does the**  
For those enrolled in Medicare immunization is \$31.

FOR MORE INFORMATION  
RAVNAH AT 775-0568 OI



WARRANT AND DEFEND the same against all lawful claims whatever, except as aforesaid. IN WITNESS WHEREOF I, hereunto set my hand and seal this 4th day of October A.D. 1954.

IN PRESENCE OF  
Hanford E. Davis  
Ruth Z. Zittel

Edith B. Carson L. S.

STATE OF VERMONT )  
Rutland County SS) Edith Carson personally appeared, and she acknowledged this instrument, by her sealed and subscribed, to be her free act and deed.

Before Me Hanford G. Davis  
Notary Public

Documentary Stamp \$.55

Chittenden Town Clerks Office this 4th day of October A.D. 1954 at 8 o'clock 15 minutes P. M. received and recorded.

Attest: *J. S. Potter*  
Town Clerk

KNOW ALL MEN BY THESE PRESENTS:

THAT We, L. E. Leonard and Hazel B. Leonard, husband and wife of Pittsford in the County of Rutland and State of Vermont Grantors, in the consideration of one or more dollars paid to our full satisfaction by Margaret Waterhouse of Salisbury in the County of Addison and State of Vermont Grantee, by these presents, do freely give, grant, sell, convey and confirm unto the said Grantee, Margaret Waterhouse and her heirs and assigns forever, a certain piece of land in Chittenden in the County of Rutland and State of Vermont, described as follows, viz: A camp lot located and situated on the westerly side of the highway commonly known as the Furnace Brook Road leading from Pittsford to Holden, so-called and described as follows: Starting at the south easterly corner of our lands (same being the northeasterly corner of lands of F. Burditt; thence going north or northerly and over and upon and upon the westerly boundary line of the above mentioned highway about One hundred and forty five feet (145) to a point at two large stones; thence going westerly about thirty-five feet (35) to the easterly bank of the said Furnace Brook; and at a point where stands one yellow birch tree; thence going south and over and upon the easterly bank of said brook and as said brook winds to a point lying directly west of a culvert in the above mentioned highway; thence going easterly and in a straight line one hundred and five feet (105) to the point began at.

The above premises being a portion of the lands purchased by the Grantors from the estate of Charles S. Caverly.

TO HAVE AND TO HOLD said granted premises, with all the privileges and appurtenances thereof, to the said Grantee, Margaret Waterhouse her heirs and assigns, to their own and behoof forever; and we the said grantors for ourselves and our heirs, executors and administrators, do covenant with the said Grantee her heirs and assigns, that until the sealing of these presents we are the sole owners of the premises, and have good right and title to convey the same in manner aforesaid, that they are free from every encumbrance; and we hereby engage to warrant and defend the same against all lawful claims whatever.

IN WITNESS WHEREOF, we hereunto set our hands and seals this 29th day of May A.D. 1954. IN PRESENCE OF

Merrit B. Neil  
Raymond E. Leonard

L. E. Leonard L. S.  
Hazel B. Leonard L. S.

STATE OF VERMONT )  
RUTLAND COUNTY, SS) At Pittsford this 24th day of May A.D. 1954 L. E. Leonard and Hazel Leonard personally appeared, and acknowledged this instrument, by them sealed and subscribed, to be their free act and deed.

Before me, George W. Neil  
Notary Public Seal

Stamps \$.55  
Chittenden Town Clerk's Office this 8th day of October A.D. 1954 at 2 o'clock P. M. received and recorded.

Attest: *J. S. Potter*  
Town Clerk.

Petition for Road discontinuance;

Notice is hereby given that a petition has been presented to the undersigned Selectmen by certain freeholders of the Town of Chittenden requesting that instead of discontinuance of the hereinafter described highway that it be left as a Trail, for the benefit of abutting land owners, within the Town of Chittenden, and for laying out the highway hereinafter referred to.

The part to be turned into a Trail being a portion of that certain highway in the Town of Chittenden, Vermont, designated as State Aid Road #2 from its intersection with the relocation of the new highway at Station 3 ± 20 plus as shown on a survey entitled "German Hill Highway" October 1949, Chittenden, Vermont, a copy of which is on file in the Town Clerk's Office, Chittenden, Vermont, of which the original survey notes are on file in the Highway Department, Montpelier, Vermont, which point of intersection is about 362 feet southerly from the center of the wooden bridge near the residence of Arthur W. Elliott, to its junction with said relocated new highway at Station 10 ± 20 as shown on said survey, which point is about 550 feet northerly from the northeast corner of the residence of Jehn W. Hann. The length of the same being about 1970 feet.

Excepting and reserving from the foregoing, however, and leaving the same as a public highway, the extension of Town Highway #11 as it crosses said State Highway #2, to the extent and width of the present highway limits of Town Highway #11.

Notice is hereby given that the undersigned, Selectmen of the Town of Chittenden, will examine the premises and hear all parties interested at the Town Hall in the Town of Chittenden, on the 4th day of October A.D. 1954 at 7.30 O'clock in the afternoon.

Notice is ~~XXXXXX~~ further given that the undersigned Selectmen will consider the petition for laying out a highway as shown on a survey entitled German Hill Highway, October 1949 Chittenden Vermont" on file in the Town Clerk's Office and that the

*Re German Hill Road*

*1970' = .373 mi*

will examine such premises and hear all parties interested at the above appointed time and place.

Dated at Chittenden, Vermont, this 20 day of September A.D. 1954.

Ralph O. Baird  
Richard A. Congdon  
John G. Fenton

Selectmen of the Town of Chittenden, Vt  
STATE OF VERMONT  
COUNTY OF RUTLAND  
TOWN OF CHITTENDEN

Whereas at Chittenden aforesaid, on the 4th day of October A.D. 1954 at 7.30 o'clock P. M. said Selectmen to wit: Ralph O. Baird, Richard A. Congdon and John G. Fenton did meet and after hearing all interested parties who signed said petition, the so-called German Hill Road relocation.

Said Selectmen were of the opinion that for the benefit of abutting land owners, the so-called German Hill Road be left as a Trail, and the new relocation would be in the best interest of the Town and all others concerned. A copy of the above survey and petition are on file in the Town Clerk's Office Chittenden, Vermont.

Attest: J. E. Potter Town Clerk

Selectmen

Ralph O. Baird  
Richard A. Congdon  
John G. Fenton

Chittenden  
Town Clerk's Office this 5th day of October A.D. 1954 at 2 o'clock P. M.  
received and recorded.

Attest: J. E. Potter Town Clerk.

KNOW ALL MEN BY THESE PRESENTS:

That we, Richard N. Smith and Carelyn A. Smith, husband and wife of Chittenden in the County of Rutland and State of Vermont, for the consideration of Five Thousand Five Hundred and no/100 Dollars received to our full satisfaction of the Rutland Savings Bank, a Corporation organized under the laws of the State of Vermont, located and doing business in the City of Rutland, in the County of Rutland and State of Vermont, do give, grant, bargain, sell and confirm unto the said Rutland Savings Bank, its successors and assigns, a certain parcel of land with the privileges and appurtenances thereof, lying and being in the Town of Chittenden in the County of Rutland and State of Vermont, and bounded and described as follows, namely:

Being all and the same lands and premises conveyed to Richard N. Smith and wife by deed of Edna McNally dated September 16, 1954 and recorded in Chittenden Land Records in Book 21 at page 337 and bounded and described as follows:

Parcel #1: Being all and the same lands and premises conveyed to Edna McNally by deed of John Shelvey dated September 25, 1933 and recorded in Chittenden Land Records in Book 19 at page 70 and in said deed described as follows:

"Bounded northerly by land of Herbert Sprague formerly of John Tarble; easterly by land of C. R. Holden and R. O. Dew; southerly by land of Herbert Ingalls or Julius Randall; and westerly by land of Charles Weester, and by lands of William Beebe and R. S. Wetmore, containing one hundred and seventy acres, more or less, and being the farm formerly owned by Patrick Shelvey, deceased."

Parcel #2: Being all and the same lands and premises conveyed to Edna L. McNally by deed of Glen Churchill dated June 30, 1939 and recorded in Chittenden Land Records in Book 20 at page 13 and in said deed described as follows:

"Bounded southerly on lands formerly owned by the Shelvey Estate; easterly by the road leading from Geshen to Rutland; northerly by lands formerly owned by

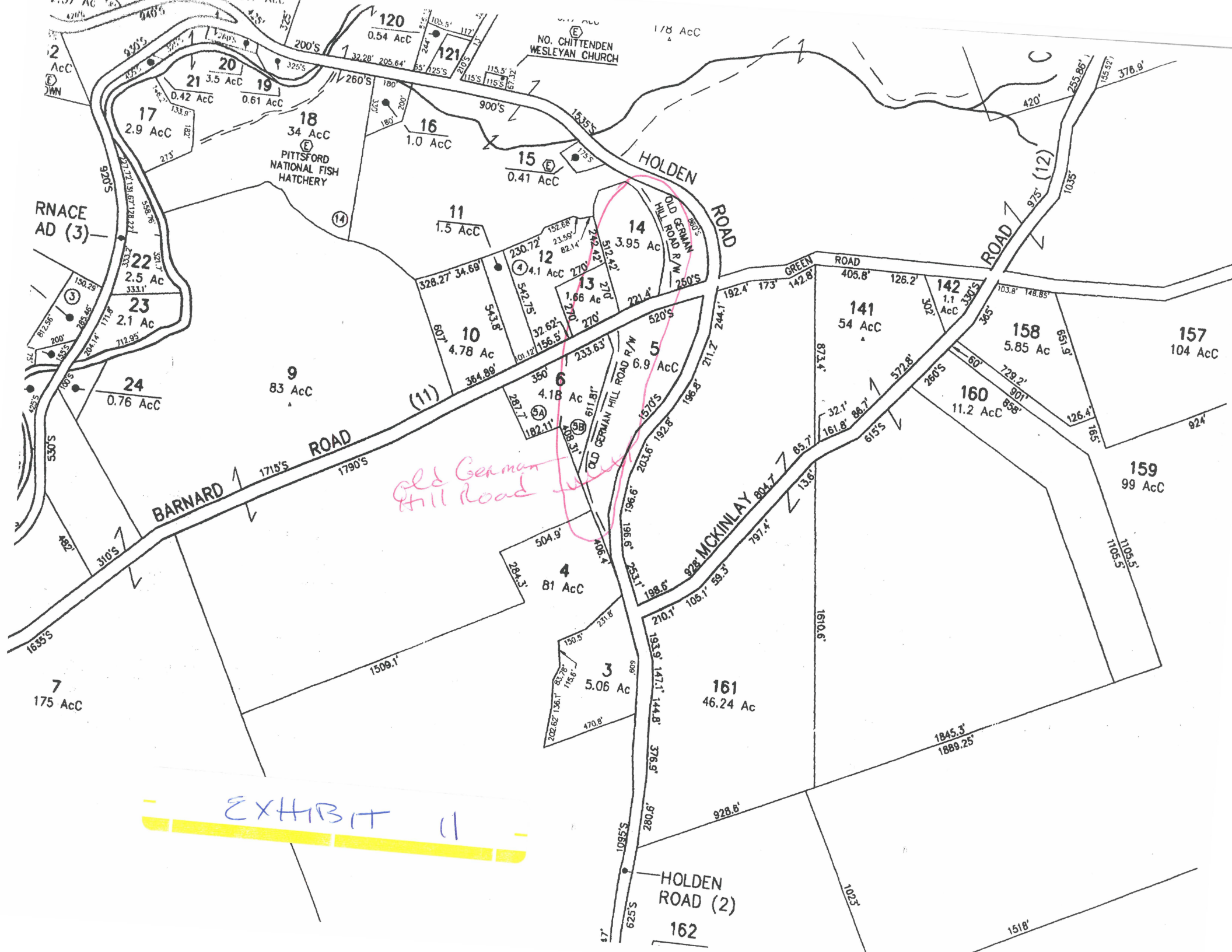
Sprague; and westerly by lands formerly owned by Shelvey and Tarble. Containing two (2) acres, more or less."

WE DO HAVE AND TO HOLD the above granted and bargained premises, with the privileges and appurtenances thereof unto it, the said Rutland Savings Bank its successors and assigns forever, to its and their own proper use benefit and behoof. And also we the said Granters do for ourselves and heirs, executors and administrators, covenant with the said Rutland Savings Bank, its successors and assigns, that at and until the unsealing of these presents we are well seized of the premises as a good indefeasible estate in fee simple, and have good right to bargain and sell the same in manner and form as above written, and that the same is free from all incumbrances whatsoever. And, furthermore, we the said Granters do by these presents bind ourselves and heirs forever, to WARRANT AND DEFEND the above granted and bargained premises to the said Rutland Savings Bank, its successors and assigns against all claims and demand whatsoever.

PROVIDE D NEVERTHELESS, That we the said Richard N. Smith and Carelyn A. Smith, our heirs, executors or administrators, shall well and truly pay, or cause to be paid, to the said Rutland Savings Bank, its successors and assigns the sum of Five Thousand Five Hundred and no/100 Dollars, specified in a promissory note signed by Richard N. Smith and Carelyn A. Smith dated October 26, 1954, payable on demand, with interest payable semi-annually on the first days of April and October in each year, according to the tenor and effect of said note, and shall also pay, or cause to be paid, according to their tenor and effect, any and all other notes, heretofore, and at any time, and from time to time hereafter, executed by us or the survivor of us to said Rutland Savings Bank, and shall at all times keep the buildings on said premises well insured in some safe and responsible company, for the benefit of said Rutland Savings Bank, as its interest may appear, and to its satisfaction, and also pay all taxes and assessments levied upon said premises, then this deed to be null and void, otherwise to remain in full force and virtue. And in case of failure to keep said buildings so insured, or to pay such taxes and assessments, then said Rutland Savings Bank, may cause such buildings to be so insured in the owner's name, and pay such taxes and

DISCHARGE  
The within mortgage is hereby discharged at the City of Rutland, in the County of Rutland and State of Vermont, on this 9th day of October A.D. 1959.  
In Presence of ) Rutland Savings Bank  
( Discharged of record this 14th day of October A.D., 1959 )  
Exec. Vice Pres. )  
( by Stetson C. Edmonds )  
Town Clerk





*Old German Hill Road*

EXHIBIT 11

RNACE AD (3)

HOLDEN ROAD

BARNARD ROAD

HOLDEN ROAD (2)

162

7  
175 AcC

24  
0.76 AcC

9  
83 AcC

11  
1.5 AcC

10  
4.78 AcC

4  
81 AcC

3  
5.06 AcC

161  
46.24 AcC

17  
2.9 AcC

20  
0.42 AcC

19  
0.61 AcC

18  
34 AcC  
PITTSFORD NATIONAL FISH HATCHERY

16  
1.0 AcC

15  
0.41 AcC

12  
4.1 AcC

13  
1.66 AcC

14  
3.95 AcC

141  
54 AcC

158  
5.85 AcC

157  
104 AcC

160  
11.2 AcC

159  
99 AcC

NO. CHITTENDEN WESLEYAN CHURCH

PITTSFORD NATIONAL FISH HATCHERY

OLD GERMAN HILL ROAD R/W

5  
6.9 AcC

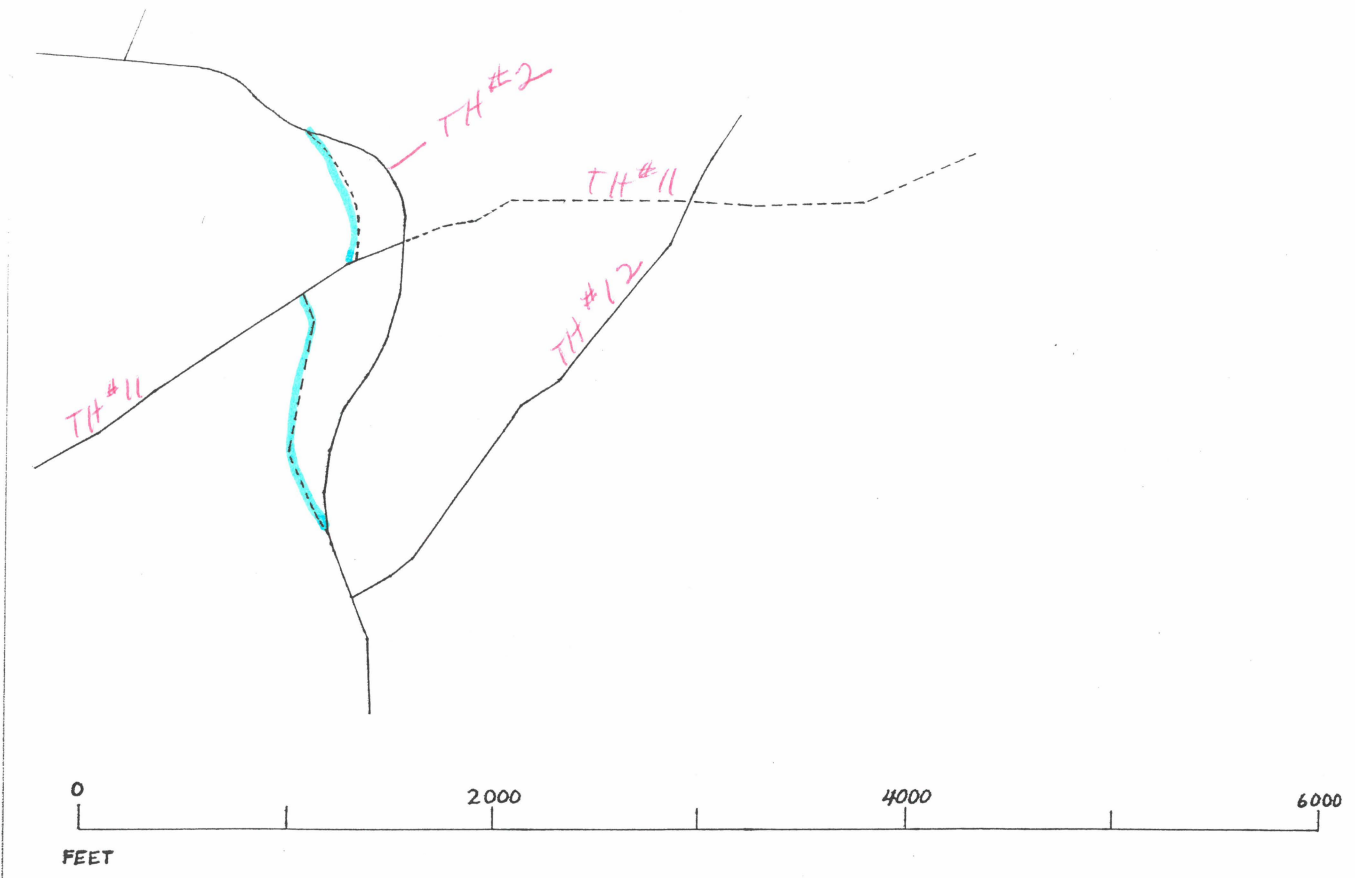
161  
46.24 AcC

162

EXHIBIT 11



				Municipal/Real	Homestead	Non-Resi
SYARTO JOLAN			R1	TOTAL REAL	148,500	148,500
PO BOX 17	50-126	HOUSE/LAND				
CHITTENDEN VT 05737		ACRES: 1.27				
PARCEL ID: 0220007-	SPAN: 147-046-10652	HOUSESITE: 148,500		GRAND LIST	1,485.00	1,485.00
TABOR RANDALL A	50-31	HOUSE/BARN/LAND	R1	TOTAL REAL	167,600	167,600
BRISSON MAGDA M						
PSC 103, BOX 4499		ACRES: 1.60				
APO AE 09603	SPAN: 147-046-10653	HOUSESITE: 167,600		GRAND LIST	1,676.00	1,676.00
PARCEL ID: 0120072-						
TAGGART SCOTT	18-44	LAND	W	TOTAL REAL	16,300	16,300
CIOFFI CATHERINE						
1139 POST ROAD EXTENSION		ACRES: 3.50				
RUTLAND VT 05701	SPAN: 147-046-10614	HOUSESITE: 0		GRAND LIST	163.00	163.00
PARCEL ID: 0100136-						
TALBERT ROBERT B & LINDA M	HS-131 FILED		R2	TOTAL REAL	388,600	388,600
44 GERMAN HILL FARM RD	13-152	HOUSE/LAND				
NO CHITTENDEN VT 05763		ACRES: 11.70				
PARCEL ID: 0270044-	SPAN: 147-046-10302	HOUSESITE: 368,300		GRAND LIST	3,886.00	3,886.00
TAYLOR REGINA	HS-131 FILED		R1	TOTAL REAL	87,100	87,100
PO BOX 41	18-24	HOUSE/GARAGE/LAND				
CHITTENDEN VT 05737		ACRES: 1.70				
PARCEL ID: 0100159-	SPAN: 147-046-10531	HOUSESITE: 87,100		GRAND LIST	871.00	871.00
THOMAS BRADFORD	13-61	LAND	M	TOTAL REAL	69,000	69,000
119 SOUTH ST						
PROCTOR VT 05765	ACRES: 6.80	SPAN: 147-046-10656				
PARCEL ID: 033125L-	HOUSESITE: 0			GRAND LIST	690.00	690.00
THOMAS WINFRED A	HS-131 FILED		R2	TOTAL REAL	441,800	441,800
10 LAZY ACRES RD	13-64	HOUSE/LAND				
NO CHITTENDEN VT 05763		ACRES: 9.96				
PARCEL ID: 0330010-	SPAN: 147-046-10138	HOUSESITE: 398,300		GRAND LIST	4,418.00	4,418.00
THOMPSON BENJAMIN M	HS-131 FILED		R1	TOTAL REAL	242,600	242,600
227 HOLDEN RD	50-136	HOUSE/LAND				
CHITTENDEN VT 05737		ACRES: 2.80				
PARCEL ID: 0130227-	SPAN: 147-046-10657	HOUSESITE: 240,900		GRAND LIST	2,426.00	2,426.00
THORNE HARRIET	50-94	HOUSE/LAND	R1	TOTAL REAL	99,800	99,800
STEVENS DAVID R.						
140 POWERHOUSE RD		ACRES: 2.70				
CHITTENDEN VT 05737	SPAN: 147-046-10659	HOUSESITE: 98,000		GRAND LIST	998.00	998.00
PARCEL ID: 0190140-						



Old German Hill Road

EXHIBIT 12

scale 1:5000

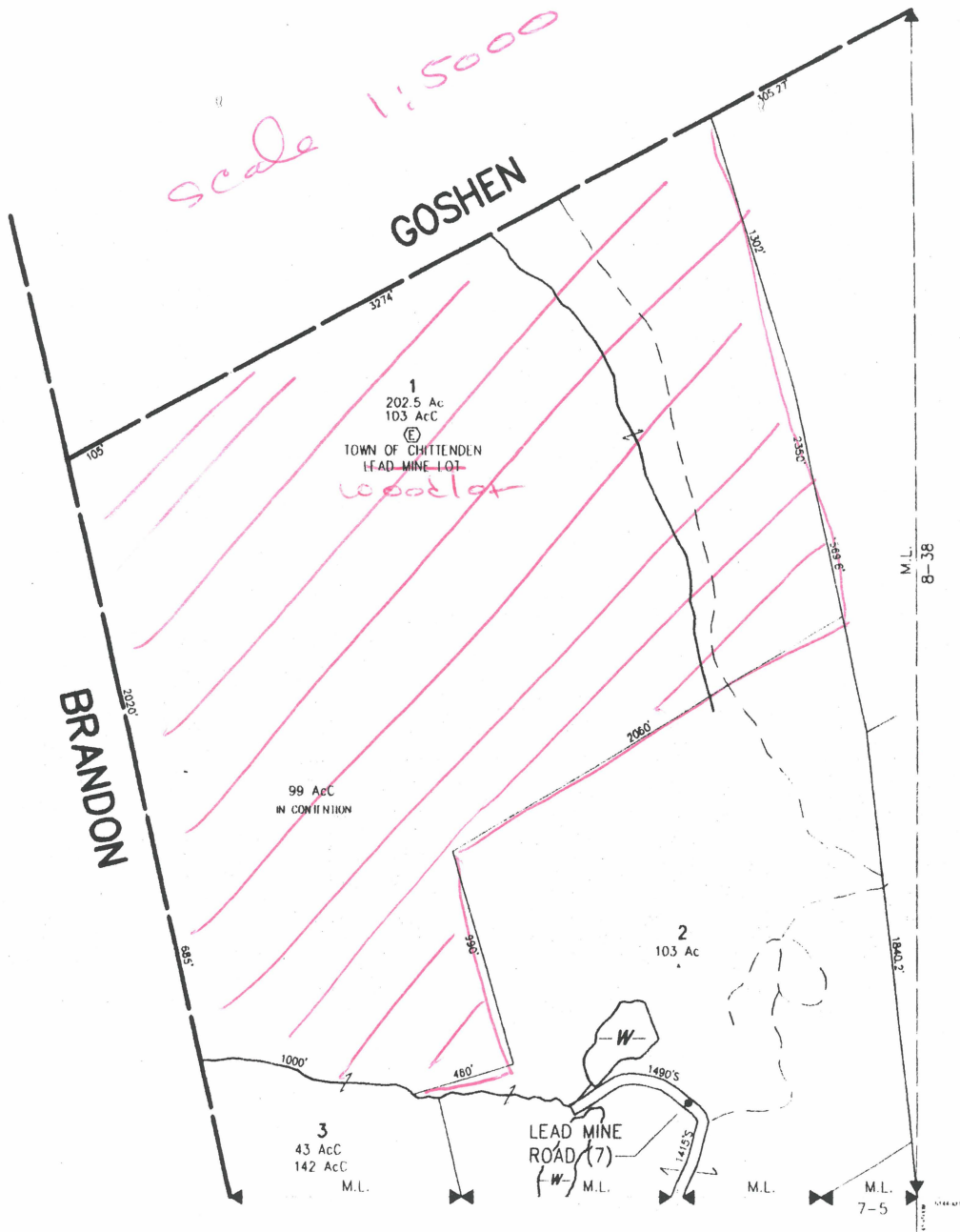
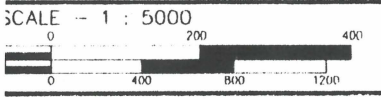


EXHIBIT 13



APRIL 1, 2006

TOWN OF  
**CHITTENDEN**  
 VERMONT

MAP	INDEX
4	100
7	8 9
12	13 14
17	18 19 20
21	22 23

LOCAL MAP NO.  
**3**

REPORT OF FINDINGS,  
ORDER and RETURN  
REGARDING TOWN HIGHWAY NO. 23

The undersigned Selectmen of the Town of Chittenden state as follows:

1. On the 14th day of September, 1987, the Selectmen initiated proceedings on their own Motion to Re-classify/Discontinue the Class 4 section of Town Highway No. 23:

2. On the 24th day of September, 1987, at least 30 days prior to examination and Hearing, Notice of Discontinuance/Ré-classification, a copy of which is attached hereto, incorporated herein and marked Exhibit A, was sent by certified mail, return receipt requested, to the Town Planning Commission and the following interested parties:

Abutting Landowners and Landowners  
Through Whose Property the Road Passes

1. A. Johnson Lumber  
Bristol, VT 05443
2. Herbert Johnson, Sr.  
1 Main St., Proctor, VT 05765
3. AMA Contracting Corp.  
Paul Hoffman, c/o Pearl Scalese,  
220 Washington Rd., Sayreville, NJ 08872
4. Seletmen, Town of Mendon  
RFD, Rutland, VT 05701

3. On the 26th day of October, 1987, at least 10 days prior to examination and Hearing, the aforesaid Notice of Discontinuance, Exhibit A, was posted in the Town Clerk's office and published in the Rutland Herald newspaper. A copy of the newspaper Notice is attached hereto, marked Exhibit B, and

EXHIBIT 14

incorporated herein.

4. On the 7th day of November, 1987, the Selectmen conducted an examination and held a Hearing pursuant to such Notice on the Discontinuance/Re-classification of the above-said highway. Present at this hearing were Robert Baird, Lee Baird, Gary Falk, Robert Muzzy, Dave Sargent, Paul Hoffman, Peter Hall, Bill Sayre, Tom Jaeger and Richard Lang.

5. At the examination and Hearing the Selectmen heard from interested parties and determined that the public good, necessity and convenience of the inhabitants of the Town of Chittenden require that the aforesaid highway be re-classified to a trail for the following reasons:

A. The road is in very poor condition and the town has done no maintenance on this road for many years. There are no year round homes on this road.

B. The Selectmen from the Town of Mendon have no objection to the reclassification of this road to a trail and have stated their intention to reclassify their road which joins T.H. #23 at the Chittenden-Mendon line to a trail. See attached Exhibit C.

C. Representatives of the two property owners who own land along this road, the A. Johnson Co. and AMA Contracting Corp., have expressed their opposition to the reclassification of this road to a trail. However, the Selectmen find the trail designation more accurately describes the current use and maintenance of this right-of-way. Similar roads in Chittenden have also



CERTIFICATE OF TOWN CLERK

I hereby certify that on the 5th day of January, 1988 I recorded the foregoing Report of Findings, Order and Return regarding Town Highway No. 23.

DATED: January 5 1988 Thomas S. Shaw  
Town Clerk

STATE OF VERMONT  
RUTLAND COUNTY, SS

At Chittenden, this 4th day of January, 1988, Robert Bearor, Gary Falk, and Robert Baird personally appeared and they acknowledged this instrument, by them, sealed and subscribed to be their free act and deed.

Before me,

Thomas S. Shaw  
Notary Public



Exhibit B

MONDAY MORNING, OCTOBER 26, 1987

**V. List of Maps**  
 Land use and Transportation Plan maps are also included in the Plan.  
 Dated this 23rd day of October, 1987 at Plymouth, Vermont.  
 Plymouth Planning Commission  
 Elizabeth Jarvi, Chairman

**VERMONT NOTICE OF DISCONTINUANCE OR RECLASSIFICATION OF TOWN HIGHWAY**  
 Notice is hereby given that the Selectmen of the Town of Chittenden will conduct an examination and hold a hearing on the Discontinuance or Reclassification of the following Town Highway:

T.H. #17, beginning at T.H. #18 (Mountain Top Road) and continuing in a westerly direction for 0.17 miles.

The Selectmen will conduct their examination and said public hearing on November 7, 1987, at 9:30 a.m. Interested persons will meet at the intersection of T.H. #17 and Mountain Top Rd.

DATED this 14th day of September, 1987.  
 Robert Bearor  
 Gary Falk  
 Robert Baird  
 Board of Selectmen

**INSTRUCTION TRAIN FOR AIRLINE/TRAVEL CAREERS!!**

**TRAVEL AGENT TICKET AGENT STATION AGENT RESERVATIONIST**  
 Start locally. Full-time/Part-time. Train on live airline computers. Home study and resident training. Financial aid available. Job placement assistance. National headquarters Lighthouse Pt., FL.

**A.C.T. TRAVEL SCHOOL**  
 1-800-327-7728  
 Accredited Member NHSC

**VERMONT NOTICE OF RECLASSIFICATION OF TOWN HIGHWAY**  
 Notice is hereby given that the Selectmen of the Town of Chittenden will conduct an examination and hold a hearing on the reclassification of the following Town Highway:

A section of T.H. #23 (Wildcat Road), which is presently "Class 4", beginning at a point which is 3.09 miles from the intersection of T.H. #23 and T.H. #1 (Dam Road) and continuing in a southeasterly direction for .41 miles, ending at the Chittenden-Mendon town line.

The Selectmen will conduct their examination and said public hearing on November 7, 1987, at 11 o'clock a.m. at the beginning of the Class 4 section of T.H. #23 (Wildcat Rd.), 3.09 miles from the intersection of Wildcat Rd. and Dam Rd.

DATED this 14th day of September, 1987.  
 Robert Bearor  
 Gary Falk  
 Robert Baird  
 Board of Selectmen

**VERMONT NOTICE OF DISCONTINUANCE OR RECLASSIFICATION OF TOWN HIGHWAY**  
 Notice is hereby given that the Selectmen of the Town of Chittenden will conduct an examination and hold a hearing on the discontinuance or reclassification of the following Town Highway:

T.H. #9, beginning at a point on T.H. #1 (Dam Road), which is .15 miles west of the intersection of T.H. #1 and T.H. #23 (Wildcat Road), and continuing in a northerly direction for .55 miles.

The Selectmen will conduct their examination and said public hearing on November 7, 1987, at 10:15 a.m. Interested persons will meet at the intersection of T.H. #9 and Dam Rd., 0.15 miles east of the intersection of the Dam Rd. and Wildcat Rd.

DATED this 14th day of September, 1987.  
 Robert Bearor  
 Gary Falk  
 Robert Baird  
 Board of Selectmen

DATED this 14th day of September, 1987.  
 Robert Bearor  
 Gary Falk  
 Robert Baird  
 Board of Selectmen

**2 - PERSONALS**

**ADOPT** - A loving couple yearns to nurture and adore your newborn as their own. Married seven years, from close-knit families with good, honest values. Can you bring this

TYPING/ Word Processing services. Resumes, letters, reports, mailings etc. Rutland 775-8077.

**5A - MORTGAGES - NOTES**

INVESTOR has cash to buy notes, mortgages and single family homes. Rutland 775-2552.

**6 - PROFESSIONAL SERVICES**

PIANO lessons for adults, early afternoons. Daniel Graves, Rutland 775-6643.

**7 - HELP WANTED**

CARPENTERS wanted, frame to finish. References required. Competitive wages and benefit package. Carissimo Lumber Co. Inc., RDS Vernon Road, Brattleboro, VT 05301 (802)254-4508. EOE.

CHARITY'S Restaurant has full time positions open for cooks and dishwashers. Please call Killington 422-3800.

CLINICIAN/ Social Worker: Position in mental health psychosocial rehabilitation unit. Applicant must enjoy working closely with clients individually and in small groups for

Exhibit A

## VERMONT

## NOTICE OF RECLASSIFICATION OF TOWN HIGHWAY

Notice is hereby given that the Selectmen of the Town of Chittenden will conduct an examination and hold a hearing on the reclassification of the following Town Highway:

A section of T.H. #23 (Wildcat Road), which is presently "Class 4", beginning at a point which is 3.09 miles from the intersection of T.H. #23 and T.H. #1 (Dam Road) and continuing in a southeasterly direction for .61 miles, ending at the Chittenden - Mendon town line.

The Selectmen will conduct their examination and said public hearing on November 7, 1987, at 11 o'clock a.m. at the beginning of the Class 4 section of T.H. #23 (Wildcat Rd.), 3.09 miles from the intersection of Wildcat Rd. and Dam Rd..

DATED this 14th day of September, 1987.

Robert Bearor

*Robert Bearor*

Gary Falk

*Gary M. Falk*

Robert Baird

*Robert Baird*

Board of Selectmen



TOWN HWY. NO.	LENGTH IN MILES CLASS 3	LENGTH IN MILES CLASS 4
6	3.440	
7		(0.380)
10	2.840	
11		(6.340)
11	0.900	
12	1.440	
13		(1.630)
14	0.460	
16	0.860	
17	0.170	
18	0.500	(0.140)
19	0.510	(0.265)
20		(0.060)
20		(0.200)
21	0.080	
22	0.960	
23	3.090	(0.610)
25	0.030	
26	0.110	
27	2.810	
28	0.020	
29	0.570	
31	0.170	
32		(3.800)
33		(0.975)
<b>TOTAL</b>	<b>18.960</b>	<b>14.400</b>

\* Portion of this town highway is Class 3, but is functionally Class 4

**MILEAGE SUMMARY**

CLASS 2		
TH-1	4.390	
TH-2	4.550	
TH-3	0.040	
TH-4	1.800	
<b>TOTAL CLASS 2</b>	<b>10.780</b>	
CLASS 3		
<b>TOTAL CLASS 3</b>	<b>18.960</b>	
<b>TOTAL TOWN</b>	<b>29.740</b>	
STATE HIGHWAY		
VT-73	0.142	
<b>TOTAL STATE HIGHWAY</b>	<b>0.142</b>	
<b>TOTAL STATE</b>	<b>0.142</b>	

**TOTAL, TRAVELED HIGHWAYS, FEB. 10, 2006: 29.882**  
(Excludes Class 4 Mileage)

- HIGHWAYS**
- INTERSTATE
  - U.S. ROUTE
  - STATE ROUTE
  - CLASS 1
  - CLASS 2
  - CLASS 3
  - CLASS 4

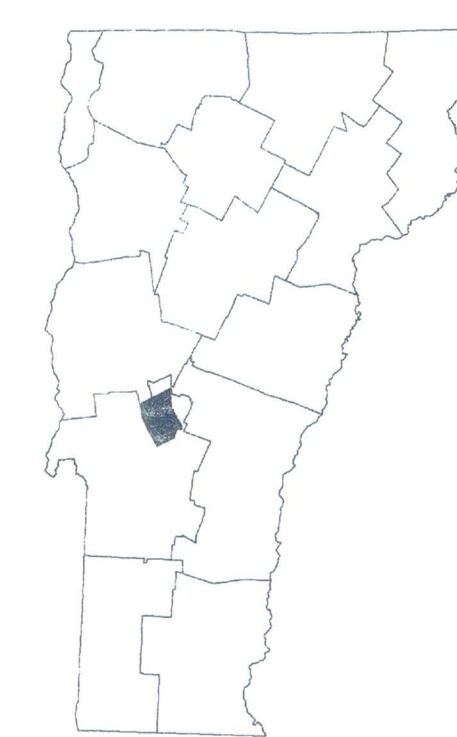
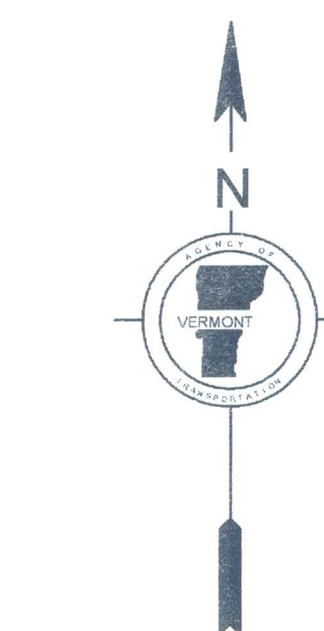
- INTERSTATE OR DIVIDED HIGHWAY
- STATE - HARD SURFACE OR PAVED
- TOWN - HARD SURFACE OR PAVED
- GRAVEL
- SOIL OR GRADED AND DRAINED EARTH
- UNIMPROVED OR PRIMITIVE
- IMPASSABLE OR UNTRAVELED
- LEGAL TRAIL
- DISCONTINUED
- HIGHWAY CLASS CHANGE
- RAILROAD

- FEDERAL CLASSIFICATION IDENTIFIER**
- FAU URBAN ARTERIAL OR COLLECTOR
  - MA MINOR ARTERIAL
  - MJC MAJOR COLLECTOR
  - MNC MINOR COLLECTOR
  - PA PRINCIPAL ARTERIAL

- PUBLIC LAND
- POLITICAL SUBDIVISIONS
- STATE BOUNDARY
- COUNTY BOUNDARY
- TOWN BOUNDARY
- VILLAGE BOUNDARY
- URBAN COMPACT
- WATER BODIES
- OPEN WATER
- SWAMP
- STREAM OR BROOK
- BRIDGE OR CULVERT
- BRIDGE OR CULVERT GREATER THAN 20'
- BRIDGE OR CULVERT 6' - 20'
- B34 STATE BRIDGE IDENTIFIER
- B34 TOWN BRIDGE IDENTIFIER

**DISCLAIMER:**  
The untraveled highways (laid-out town highways), discontinued highways, and legal trails shown hereon are those of which the Agency of Transportation has record; others may exist.  
Highway and bridge data by the Agency of Transportation, Policy & Planning Division. All other data from the Vermont Center for Geographic Information.

Vermont State Plane Coordinate System  
North American Datum of 1983  
SPCS Zone Identifier 4400  
Geodetic Reference System 80  
4,000-meter grid, Easting - Northing



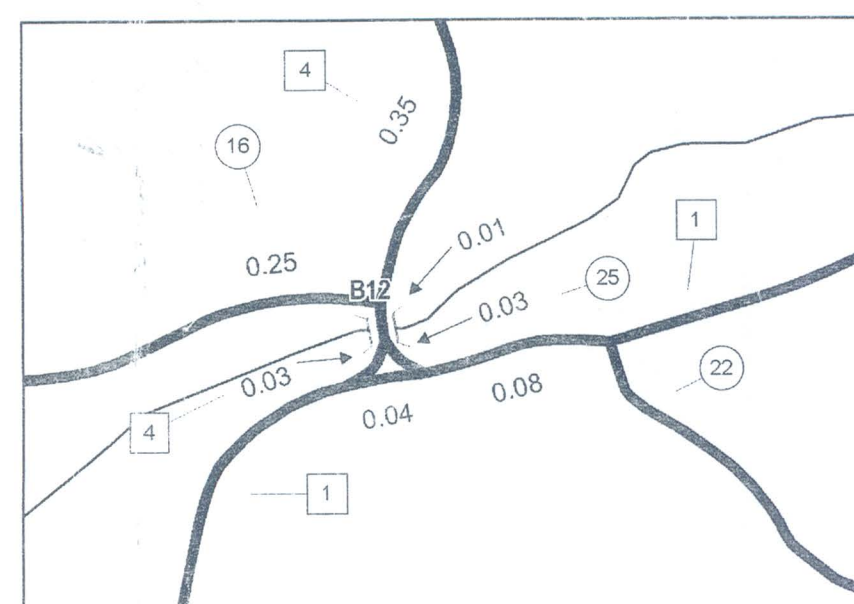
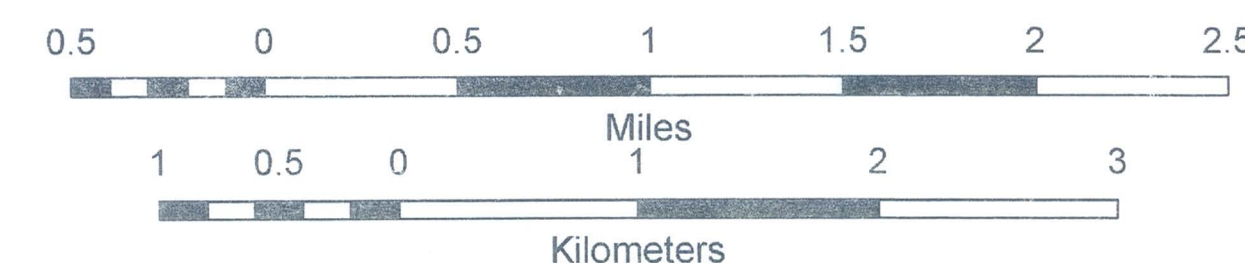
**VERMONT**  
**GENERAL HIGHWAY MAP**  
**Town of Chittenden**  
RUTLAND COUNTY

Transportation District #3

Prepared by the  
Vermont Agency of Transportation  
Policy & Planning Division  
in cooperation with  
U.S. Department of Transportation  
Federal Highway Administration

Mileage as of: Feb. 10, 2006  
Map generated: December, 2006

SCALE: 1:31680



CHITTENDEN INSET 1 SCALE 1:6336

