

District 1, 2  
Certcode 0216-0

**CERTIFICATE OF HIGHWAY MILEAGE  
YEAR ENDING FEBRUARY 10, 2026**

Fill out form, make and file a copy with the Town Clerk, and submit the Mileage Certificate on or before February 20, 2026 to: Vermont Agency of Transportation, Division of Policy, Planning and Intermodal Development, Mapping Section via email to: aot.mileagecertificates@vermont.gov or if necessary via mail to: VTrans PPAID - Mapping Section, 219 North Main Street, Barre VT 05641.

We, the members of the legislative body of WINHALL in BENNINGTON County on an oath state that the mileage of highways, according to Vermont Statutes Annotated, Title 19, Section 305, added 1985, is as follows:

**PART I - CHANGES TOTALS - Please fill in and calculate totals.**

Town Highways	Previous Mileage	Added Mileage	Subtracted Mileage	Total	Scenic Highways
Class 1	0.000			0.000	0.000
Class 2	11.523			11.523	0.000
Class 3	31.87			31.87	0.000
State Highway	12.289			12.289	0.000
<b>Total</b>	<b>55.682</b>			<b>55.682</b>	<b>0.000</b>
* Class 1 Lane	0.000			0.000	
* Class 4	1.91	0.09		2.00	0.000
* Legal Trail	1.89			1.89	

\* Mileage for Class 1 Lane, Class 4, and Legal Trail classifications are NOT included in total.

Class 4 added mileage and totals entered by P. DeAndrea, VTrans, 2/5/2026 per email 11/26/2025

Initial  
Pd

**PART II - INFORMATION AND DESCRIPTION OF CHANGES SHOWN ABOVE.**

1. NEW HIGHWAYS: Please attach Selectmen's "Certificate of Completion and Opening".

2. DISCONTINUED: Please attach SIGNED copy of proceedings (minutes of meeting).

3. RECLASSIFIED/REMEASURED: Please attach SIGNED copy of proceedings (minutes of meeting).

+0.09 mi CL4 TH-5 (Upper French Hollow Rd) remeasured

4. SCENIC HIGHWAYS: Please attach a copy of order designating/discontinuing Scenic Highways.

IF THERE ARE NO CHANGES RECORDED THIS YEAR: Place an X in the box and sign below.

**PART III - SIGNATURES - PLEASE SIGN.**

Signatures of Selectmen/Aldermen/ Trustees:

*[Handwritten signatures: E. Stetler, Stacy Kelleher, C. Barwell, Julie Knapp]*

Signature of T/C/V Clerk:

*[Handwritten signature: Cybele Stetler]*

Date Filed: 2-4-2026

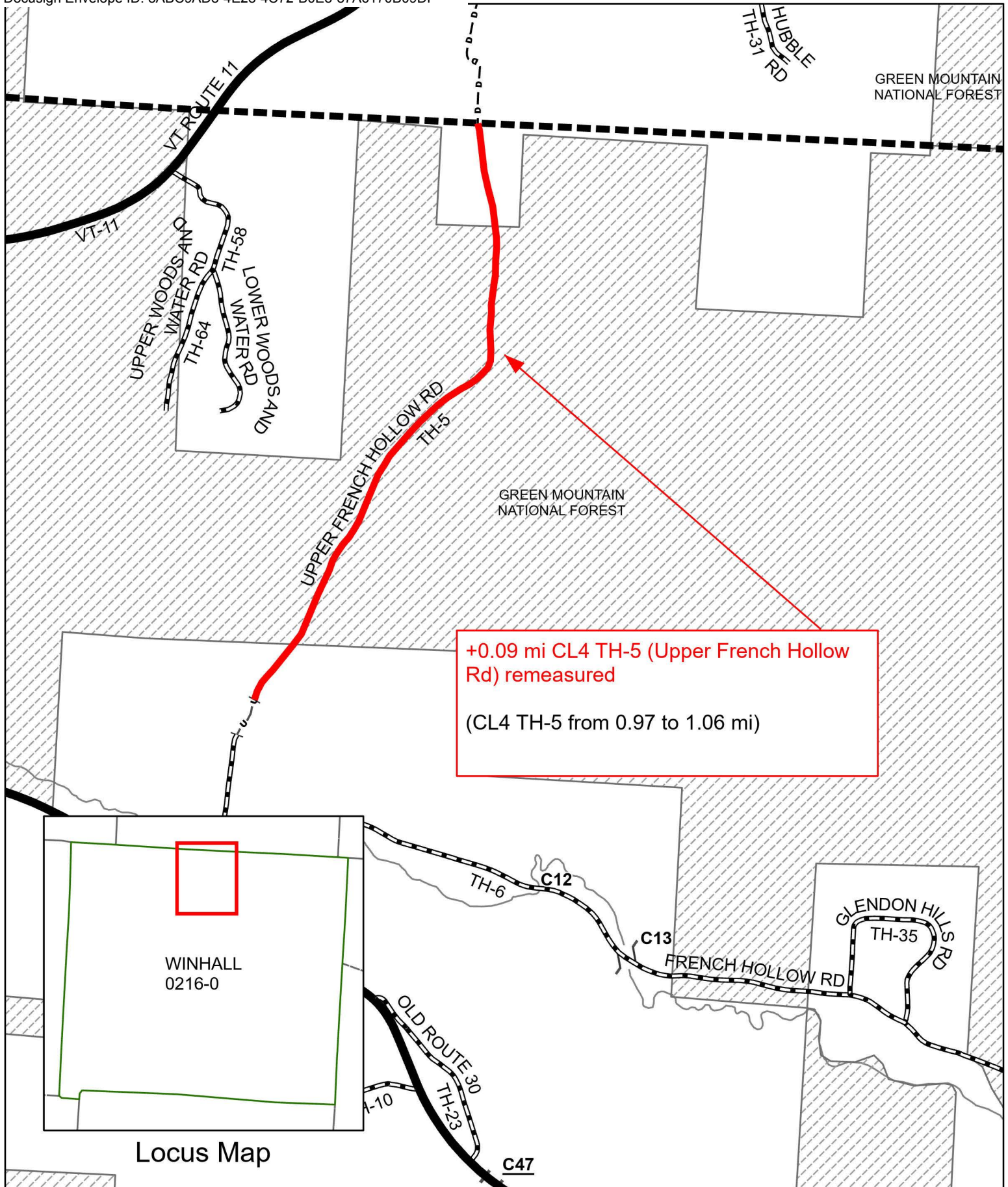
Please sign ORIGINAL and return it for Transportation signature.

AGENCY OF TRANSPORTATION APPROVAL: Signed copy will be returned to T/C/V Clerk.

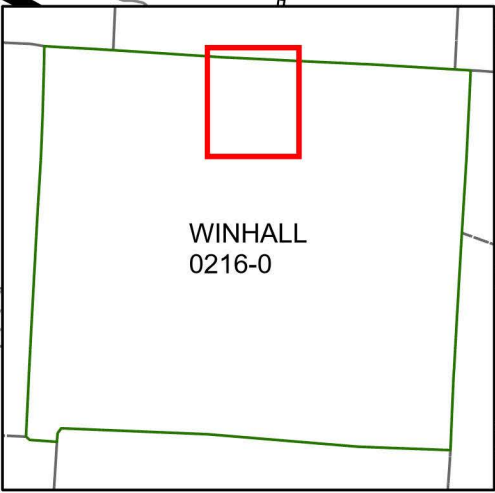
APPROVED:

*[Signature]*  
Johnathan Croft  
8B1F350F309C4C9  
Representative, Agency of Transportation

DATE: 3/4/2026



**+0.09 mi CL4 TH-5 (Upper French Hollow Rd) remeasured**  
 (CL4 TH-5 from 0.97 to 1.06 mi)



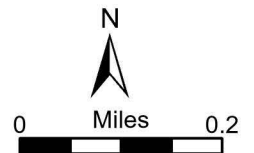
Locus Map

### Mileage Certificate Changes 2026

#### WINHALL TH-5

(CTUA:0216-0)

(CERTCODE:0216-0)



**From:** [DeAndrea, Pam](#)  
**To:** ["highway@winhall.org"](mailto:highway@winhall.org); [Lissa Stark](#)  
**Cc:** [Grant, Elizabeth](#)  
**Subject:** Winhall - possible changes for TH40 and TH-5  
**Date:** Wednesday, November 26, 2025 3:23:00 PM  
**Attachments:** [image001.png](#)  
[image002.png](#)  
[image003.png](#)  
[Winhall\\_RoadMeasurementsInventory\\_TH5.pdf](#)

---

Good afternoon Trevor and Lissa,

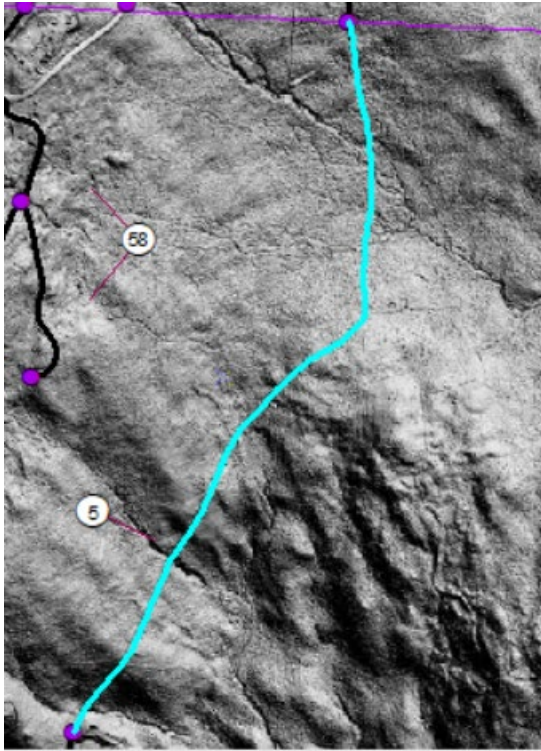
I wanted to reach out to you to check in about a couple of roads in Winhall that may need updates in 2026.

1. **TH-40 (Signal Hill Rd)** - E911 folks let us know that the Town may be taking over the private portion of Signal Hill Rd that extends past TH-40 (see green arrow in image below). Has the Town taken that on yet? If not we can put that update on hold. If you have can you please send along any surveys and/or dedication and acceptance documentation?



2. **TH-5 (Upper French Hollow Rd)** – this road looks a little out of alignment per the detailed elevation data that we now have. We have fixed this on our end (see blue line in image below) and can add the mileage change to the 2026 Mileage Certificate before we send it to you. Updating this road, I saw that we may have the break for Class 3 and 4 in the wrong place and the mileage off a bit. According

to the attached inventory from 1988, the Class 3 portion is 0.26 miles long. The reported mileage is 0.23, but I only measure 0.16 north of house #11 where the blue line starts in the second image below. We currently have the blue line as Class 4, but I am wondering if the Class 3 extends to house #22. If that is the case, this would match the Class 3 mileage on the inventory and the 0.23 reported mileage better. Let us know what you think and we can make this Class 3/Class 4 update in our data and preload any changes on the 2026 Mileage Certificate.





Thank you and Happy Thanksgiving!

Pam

**Pamela DeAndrea (she/her)** | AOT GIS Professional III  
Policy, Planning & Research Bureau / Mapping Section  
Policy, Planning & Intermodal Development Division  
Vermont Agency of Transportation  
219 N. Main Street | Barre, VT 05641  
802-793-7555 cell | [pam.deandrea@vermont.gov](mailto:pam.deandrea@vermont.gov)  
<https://vtrans.vermont.gov/>

