

**CERTIFICATE OF HIGHWAY MILEAGE
YEAR ENDING FEBRUARY 10, 2014**

Received
FEB 10 2014
Policy, Planning & Intermodal
Development Division
County

Fill out form, make and file copy with the Town Clerk, and mail ORIGINAL, before February 20, 2014 to:
Vermont Agency of Transportation, Division of Policy, Planning and Intermodal Development,
One National Life Drive, Montpelier, VT 05633.

We, the members of the legislative body of ADDISON in ADDISON
on an oath state that the mileage of highways, according to Vermont Statutes Annotated, Title 19, Section 305,
added 1985, is as follows:

PART I - CHANGES TOTALS - Please fill in and calculate totals.

Town Highways	Previous Mileage	Added Mileage	Subtracted Mileage	Total	Scenic Highways
Class 1	0.000			0.00	0.000
Class 2	7.150	2.52		9.67	0.000
Class 3	30.44		2.52	27.92	0.000
State Highway	19.302			19.302	0.000
Total!	56.892			56.892	0.000
* Class 1 Lane	0.000				0.000
* Class 4	5.08			5.08	
* Legal Trail	0.00				
* Unidentified Corridor	0.00				

* Mileage for Class 1 Lane, Class 4, Legal Trail, and Unidentified Corridor classifications are NOT included in total.

PART II - INFORMATION AND DESCRIPTION OF CHANGES SHOWN ABOVE.

- NEW HIGHWAYS:** Please attach Selectmen's "Certificate of Completion and Opening".
- DISCONTINUED:** Please attach SIGNED copy of proceedings (minutes of meeting).
- RECLASSIFIED/REMEASURED:** Please attach SIGNED copy of proceedings (minutes of meeting).
Class 2 Transfer - 2.52 mi CL3 TH-13 Goodrich Corner Rd to CL2 TH-3
- SCENIC HIGHWAYS:** Please attach a copy of order designating/discontinuing Scenic Highways.

IF THERE ARE NO CHANGES IN MILEAGE: Check box and sign below. []

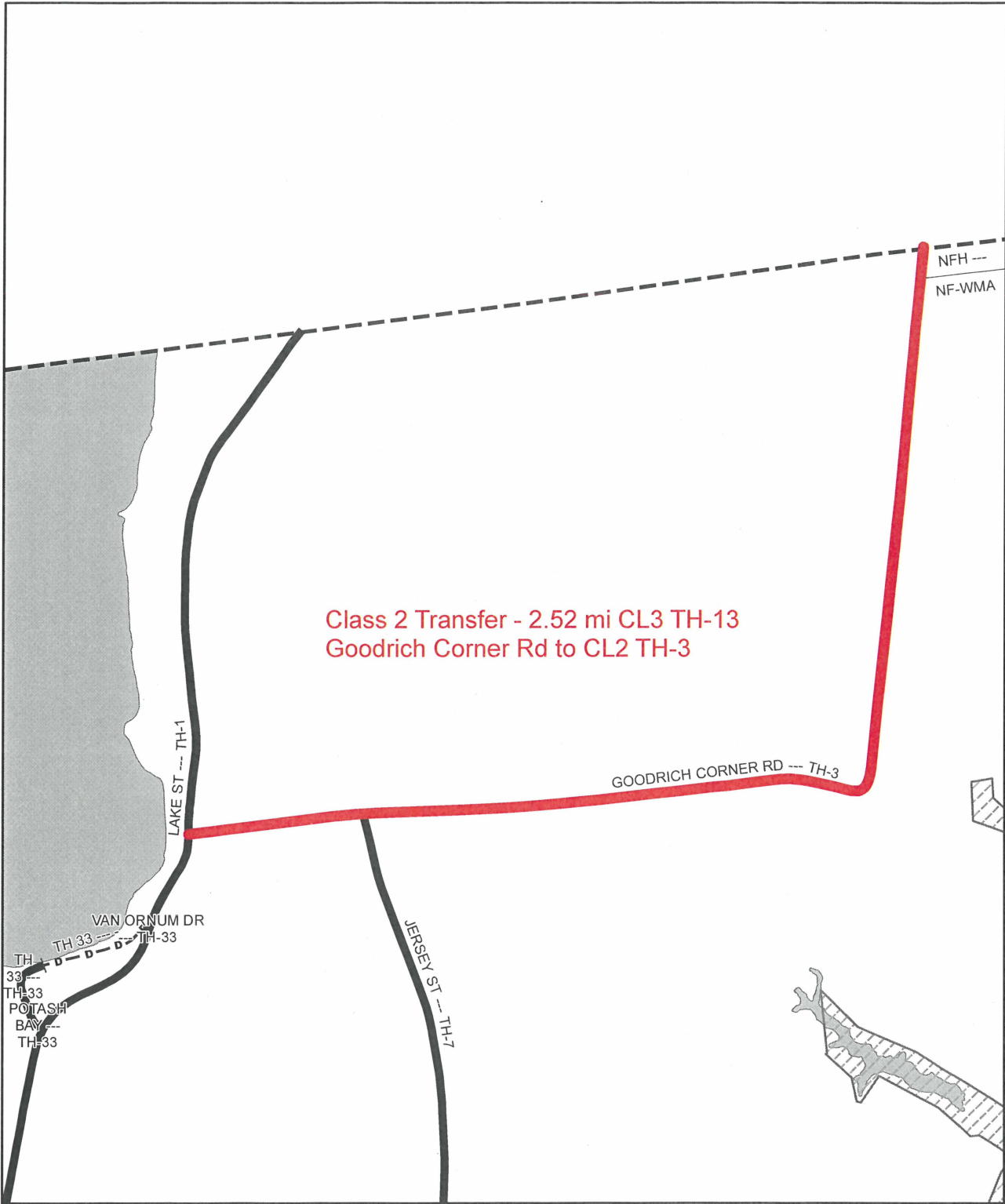
PART III - SIGNATURES - PLEASE SIGN.

Selectmen/ Aldermen/ Trustees Signatures: _____

T/C/V Clerk Signature: Maureen M. Weble Date Filed: 2/4/2014

Please sign ORIGINAL and return it for Transportation signature.

AGENCY OF TRANSPORTATION APPROVAL: Signed copy will be returned to T/C/V Clerk.
 APPROVED: _____ DATE: 5/27/2014
 Representative, Agency of Transportation
Johnathan Croft



**Mileage Certificate Change 2014
ADDISON**

Mapping Unit
Division of Policy and Planning
Vermont Agency of Transportation -- April 30, 2014



**CERTIFICATE OF HIGHWAY MILEAGE
YEAR ENDING FEBRUARY 10, 2014**

Fill out form, make and file copy with the Town Clerk, and mail ORIGINAL, before February 20, 2014 to:
Vermont Agency of Transportation, Division of Policy, Planning and Intermodal Development,
One National Life Drive, Montpelier, VT 05633.

We, the members of the legislative body of ADDISON in ADDISON County
on an oath state that the mileage of highways, according to Vermont Statutes Annotated, Title 19, Section 305,
added 1985, is as follows:

PART I - CHANGES TOTALS - Please fill in and calculate totals.

Town Highways	Previous Mileage	Added Mileage	Subtracted Mileage	Total	Scenic Highways
Class 1	0.000				0.000
Class 2	7.150	2.52			0.000
Class 3	30.44		2.52		0.000
State Highway	19.302				0.000
Total	56.892				0.000
* Class 1 Lane	0.000				0.000
* Class 4	5.08				
* Legal Trail	0.00				
* Unidentified Corridor	0.00				

* Mileage for Class 1 Lane, Class 4, Legal Trail, and Unidentified Corridor classifications are NOT included in total.

PART II - INFORMATION AND DESCRIPTION OF CHANGES SHOWN ABOVE.

- NEW HIGHWAYS:** Please attach Selectmen's "Certificate of Completion and Opening".
- DISCONTINUED:** Please attach SIGNED copy of proceedings (minutes of meeting).
- RECLASSIFIED/REMEASURED:** Please attach SIGNED copy of proceedings (minutes of meeting).
Class 2 Transfer - 2.52 mi CL3 TH-13 Goodrich Corner Rd to CL2 TH-3
- SCENIC HIGHWAYS:** Please attach a copy of order designating/discontinuing Scenic Highways.

IF THERE ARE NO CHANGES IN MILEAGE: Check box and sign below.

PART III - SIGNATURES - PLEASE SIGN.

Selectmen/ Aldermen/ Trustees Signatures: _____

T/C/V Clerk Signature: _____ Date Filed: _____

Please sign ORIGINAL and return it for Transportation signature.

AGENCY OF TRANSPORTATION APPROVAL: Signed copy will be returned to T/C/V Clerk.


APPROVED: _____ DATE: _____
 Representative, Agency of Transportation

State of Vermont
Policy, Planning and Intermodal Development
Highway Research Section
One National Life Drive
Montpelier, VT 05633-5001
vtrans.vermont.gov

[phone] 802-828-1647
[fax] 802-828-3983
[ttd] 800-253-0191

MEMORANDUM

TO: Brian Searles, Secretary of Transportation

FROM: Chris Cole, Director of Policy, Planning and Intermodal Development
By: Mary Spicer, Highway Research Manager 

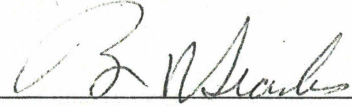
DATE: December 6, 2013

SUBJECT: Class 2 Town Highway Transfer CL 2 TH-3
Town: Addison Description: TH-13 – Goodrich Corner Road (2.52 mi)

Review of the subject Class 2 Town Highway transfer request has been completed in accordance with AOT guidelines with the following results:

<u>Policy Guidelines (Minimum Requirements)</u>		<u>This Road</u>
Classification Rating	70 points	71 points
Paved Typical	22' (shoulder to shoulder)	22'
Gravel Typical	20' (shoulder to shoulder)	N/A
Class 2 Mileage Percent	25%	Without Transfer 19.02%
		With Transfer 25.72%

This transfer to the Class 2 Town Highway system is recommended. This road meets the Classification Rating Guidelines.

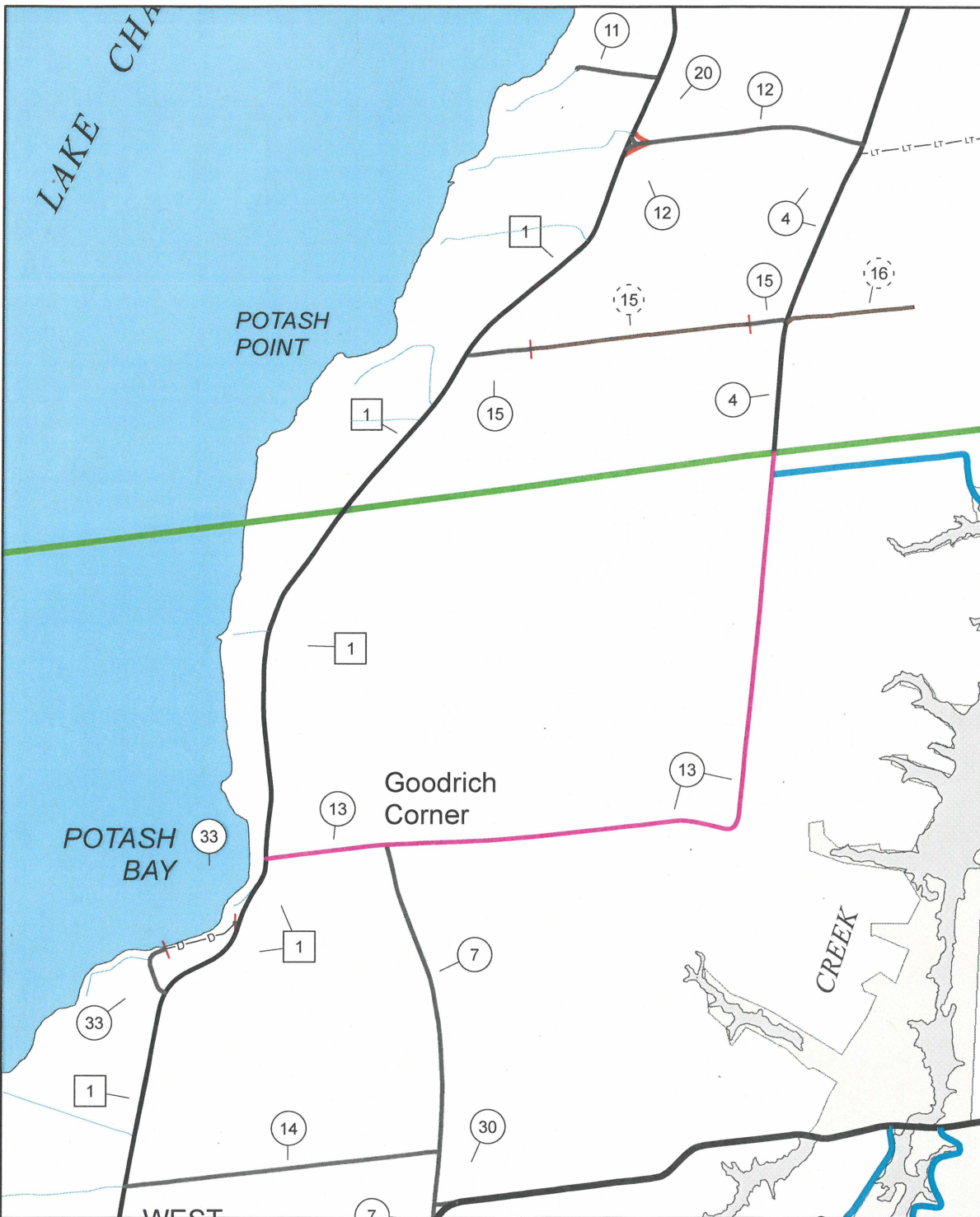
APPROVED: 
Brian Searles
Secretary of Transportation

Date: 12/10/13

MSp/SAK

CC: DTA 5, David Blackmore
Regional Planning Coordinator
Mapping, Johnathan Croft

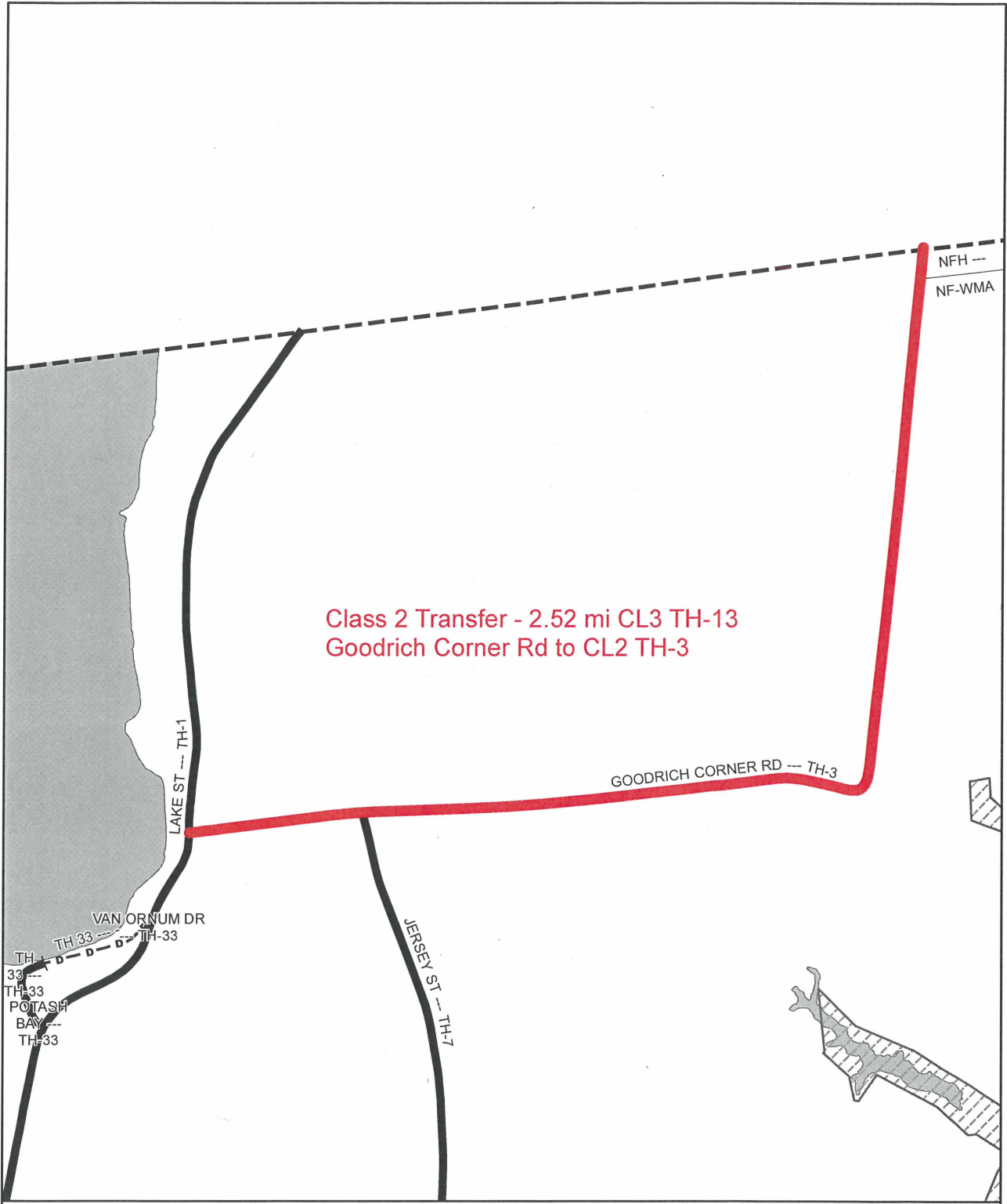
PDD Business Manager
Highway Research Files



**Upgrade of all 2.52 miles of Class 3, TH-13 to Class 2 as TH-3
Addiso, VT**

Mapping Unit
 Division of Policy and Planning
 Vermont Agency of Transportation -- January 2014





Class 2 Transfer - 2.52 mi CL3 TH-13
 Goodrich Corner Rd to CL2 TH-3

**Mileage Certificate Change 2014
 ADDISON**

Mapping Unit
 Division of Policy and Planning
 Vermont Agency of Transportation -- April 30, 2014

