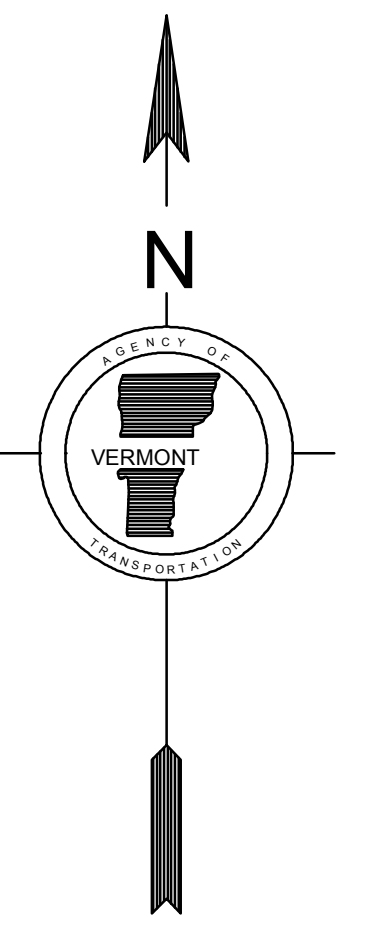
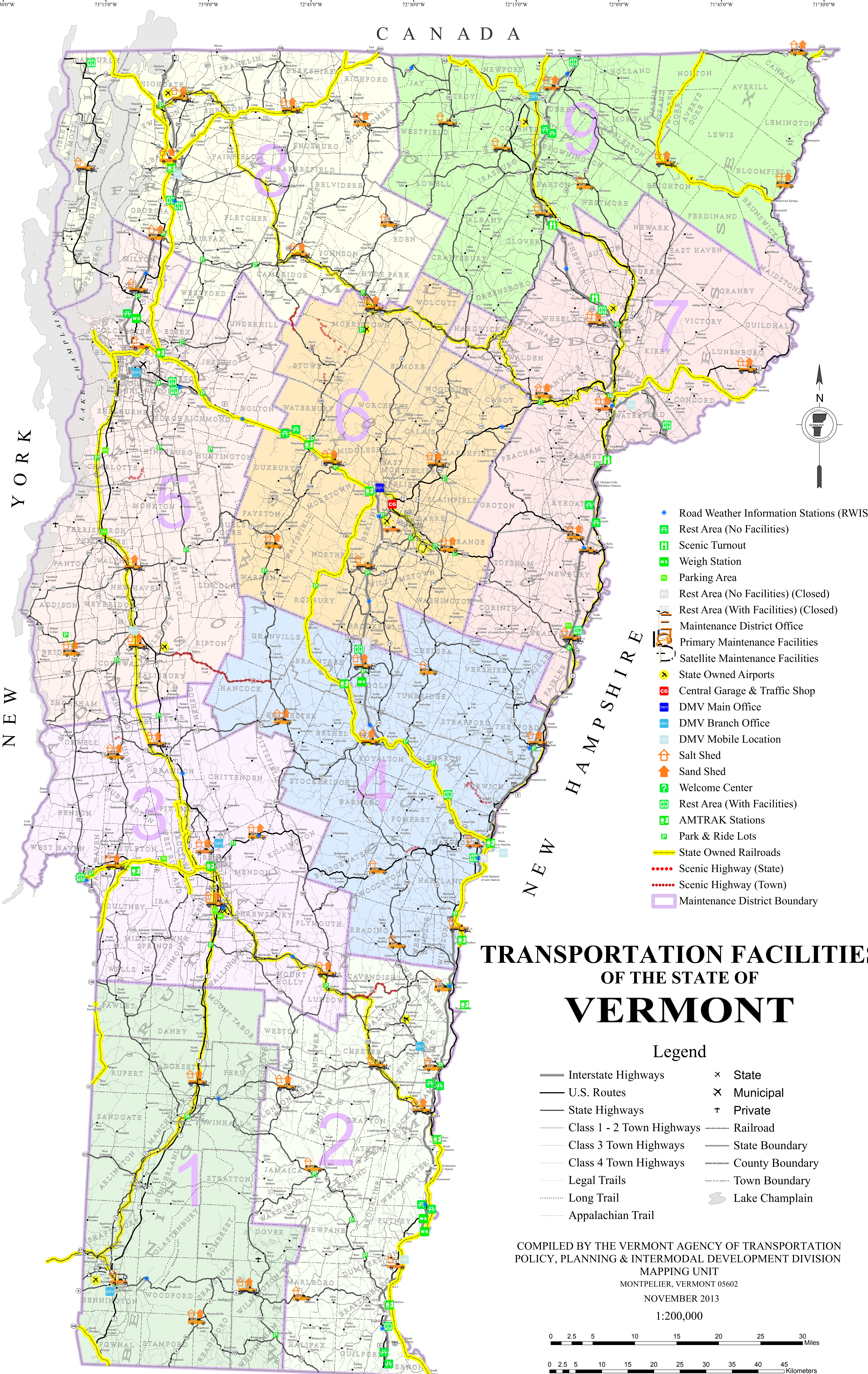


CANADA



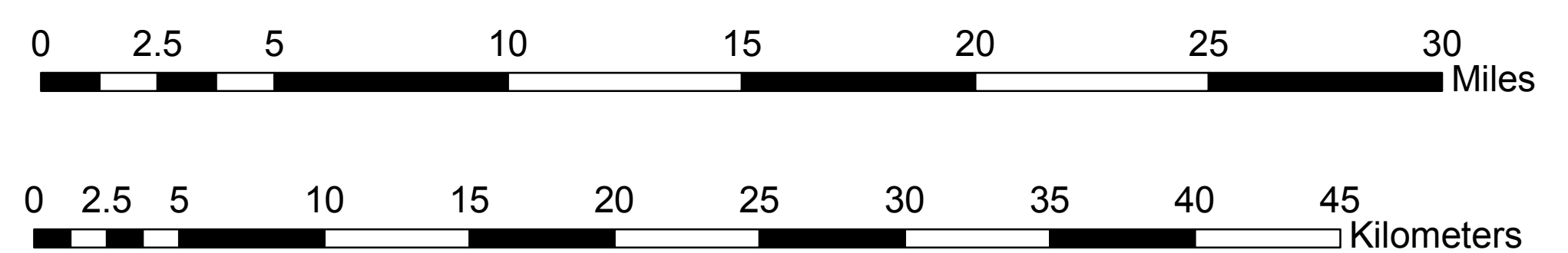
- \* Road Weather Information Stations (RWIS)
- RA Rest Area (No Facilities)
- ST Scenic Turnout
- WS Weigh Station
- PA Parking Area
- RA Rest Area (No Facilities) (Closed)
- RA Rest Area (With Facilities) (Closed)
- MO Maintenance District Office
- PM Primary Maintenance Facilities
- SM Satellite Maintenance Facilities
- SA State Owned Airports
- CG Central Garage & Traffic Shop
- DMV DMV Main Office
- DMV DMV Branch Office
- DMV DMV Mobile Location
- SS Salt Shed
- SS Sand Shed
- WC Welcome Center
- RA Rest Area (With Facilities)
- AMTRAK AMTRAK Stations
- PR Park & Ride Lots
- SR State Owned Railroads
- SH Scenic Highway (State)
- SH Scenic Highway (Town)
- MD Maintenance District Boundary

# TRANSPORTATION FACILITIES OF THE STATE OF VERMONT

## Legend

- Interstate Highways
- U.S. Routes
- State Highways
- Class 1 - 2 Town Highways
- Class 3 Town Highways
- Class 4 Town Highways
- Legal Trails
- Long Trail
- Appalachian Trail
- × State
- × Municipal
- † Private
- Railroad
- State Boundary
- County Boundary
- Town Boundary
- Lake Champlain

COMPILED BY THE VERMONT AGENCY OF TRANSPORTATION POLICY, PLANNING & INTERMODAL DEVELOPMENT DIVISION  
 MAPPING UNIT  
 MONTPELIER, VERMONT 05602  
 NOVEMBER 2013  
 1:200,000



MASSACHUSETTS