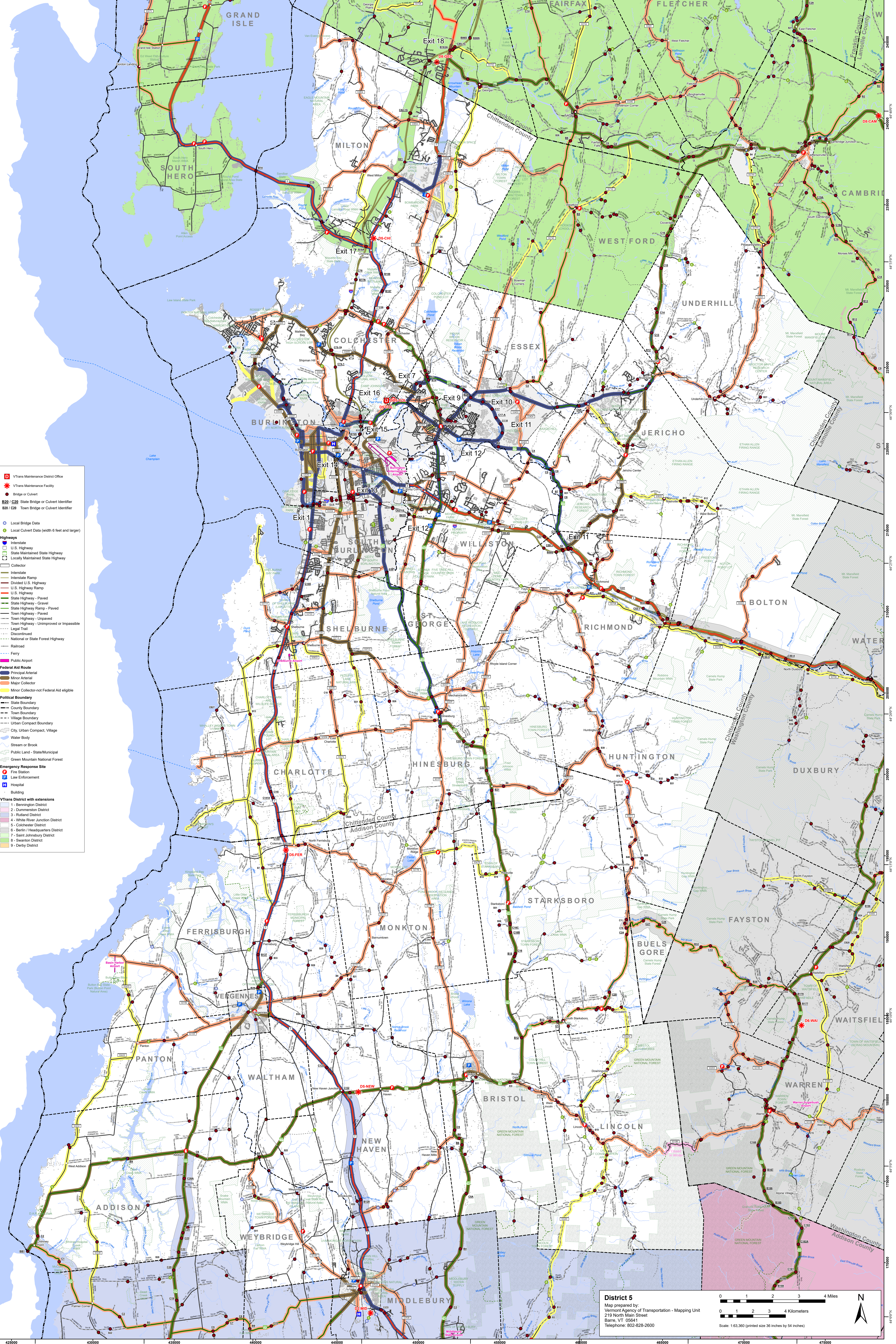


425000 73°25'0"W 430000 73°20'0"W 435000 73°15'0"W 440000 73°10'0"W 445000 73°5'0"W 450000 73°0'0"W 455000 72°55'0"W 460000 72°50'0"W 465000 72°45'0"W 470000 72°40'0"W 475000



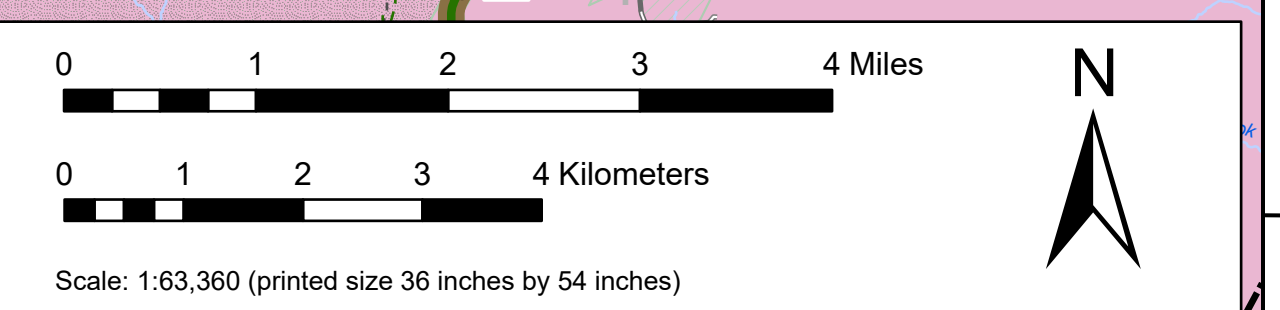
425000 73°25'0"W 430000 73°20'0"W 435000 73°15'0"W 440000 73°10'0"W 445000 73°5'0"W 450000 73°0'0"W 455000 72°55'0"W 460000 72°50'0"W 465000 72°45'0"W 470000 72°40'0"W 475000

X:\Mapping_Unit_MapDistrict_Maps\LargeMapForDistricts\Maps\2026\Large_District_Map_2026.aprx

Map generated date: 3/16/2026

This map was funded in part through grants from the Federal Highway Administration, U.S. Department of Transportation. The representation of the authors expressed herein do not necessarily state or reflect those of the U.S. Department of Transportation.

District 5
Map prepared by:
Vermont Agency of Transportation - Mapping Unit
219 North Main Street
Barre, VT 05641
Telephone: 802-828-2600



- VTtrans Maintenance District Office
- ★ VTtrans Maintenance Facility
- Bridge or Culvert
- B20 / C20 State Bridge or Culvert Identifier
- B50 / C50 Town Bridge or Culvert Identifier
- Local Bridge Data
- Local Culvert Data (width 6 feet and larger)
- Highways**
- Interstate
- U.S. Highway
- State Maintained State Highway
- Locally Maintained State Highway
- Collector
- Interstate Ramp
- Divided U.S. Highway
- U.S. Highway Ramp
- U.S. Highway
- State Highway - Paved
- State Highway - Gravel
- State Highway Ramp - Paved
- Town Highway - Paved
- Town Highway - Unpaved
- Town Highway - Unimproved or Impossible
- Legal Trail
- Discontinued
- National or State Forest Highway
- Railroad
- Ferry
- Public Airport
- Federal Aid Route**
- Principal Arterial
- Minor Arterial
- Major Collector
- Minor Collector-not Federal Aid eligible
- Political Boundary**
- State Boundary
- County Boundary
- Town Boundary
- Village Boundary
- Urban Compact Boundary
- City Urban Compact, Village
- Water Body
- Stream or Brook
- Public Land - State/Municipal
- Green Mountain National Forest
- Emergency Response Site**
- Fire Station
- Law Enforcement
- Hospital
- Building
- VTtrans District with extensions**
- 1 - Bennington District
- 2 - Dummerston District
- 3 - Rutland District
- 4 - White River Junction District
- 5 - Colchester District
- 6 - Berlin / Headquarters District
- 7 - Saint Johnsbury District
- 8 - Swanton District
- 9 - Derby District