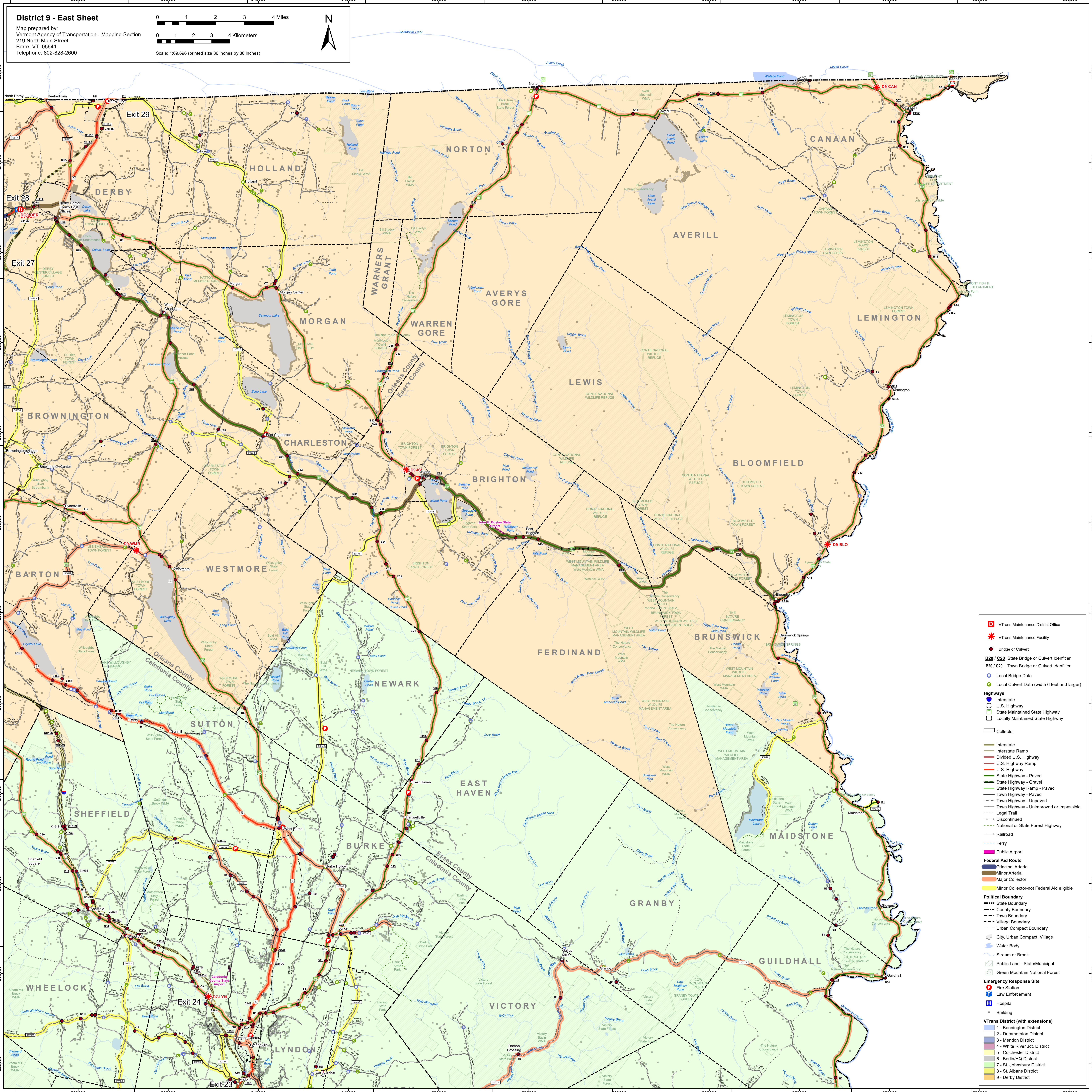


**District 9 - East Sheet**

Map prepared by:  
Vermont Agency of Transportation - Mapping Section  
219 North Main Street  
Barre, VT 05641  
Telephone: 802-828-2600



**D** VTrans Maintenance District Office

**\*** VTrans Maintenance Facility

**●** Bridge or Culvert

**B20 / C20** State Bridge or Culvert Identifier

**B20 / C20** Town Bridge or Culvert Identifier

**○** Local Bridge Data

**○** Local Culvert Data (width 6 feet and larger)

**Highways**

- Interstate
- U.S. Highway
- State Maintained State Highway
- Locally Maintained State Highway
- Collector
- Interstate Ramp
- Divided U.S. Highway
- U.S. Highway Ramp
- U.S. Highway
- State Highway - Paved
- State Highway - Gravel
- State Highway Ramp - Paved
- Town Highway - Paved
- Town Highway - Unpaved
- Town Highway - Unimproved or Impossible
- Legal Trail
- Discontinued
- National or State Forest Highway
- Railroad
- Ferry
- Public Airport

**Federal Aid Route**

- Principal Arterial
- Minor Arterial
- Major Collector
- Minor Collector-not Federal Aid eligible

**Political Boundary**

- State Boundary
- County Boundary
- Town Boundary
- Village Boundary
- Urban Compact Boundary
- City, Urban Compact, Village
- Water Body
- Stream or Brook
- Public Land - State/Municipal
- Green Mountain National Forest

**Emergency Response Site**

- Fire Station
- Law Enforcement
- Hospital
- Building

**VTrans District (with extensions)**

- 1 - Bennington District
- 2 - Dumfries District
- 3 - Mendon District
- 4 - White River Jct. District
- 5 - Colchester District
- 6 - Berlin/HQ District
- 7 - St. Johnsbury District
- 8 - St. Albans District
- 9 - Derby District