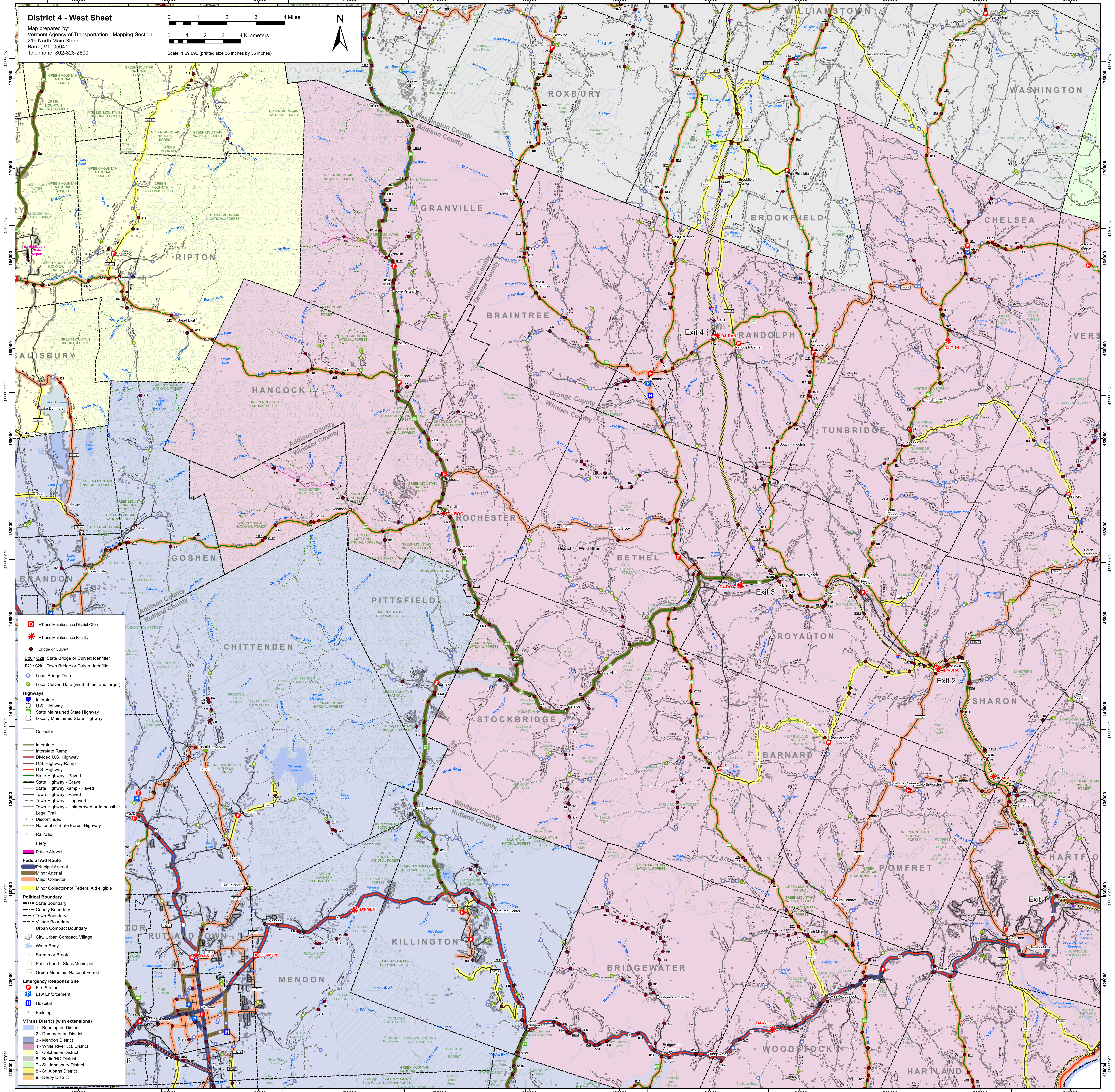
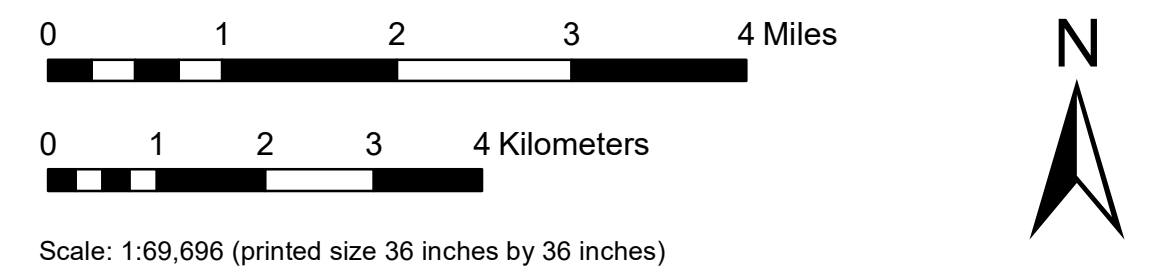


73°50'W 455000 73°40'W 460000 72°50'W 470000 72°40'W 475000 72°30'W 480000 72°20'W 485000 72°10'W 490000 72°00'W 495000 71°50'W 500000 71°40'W 505000 71°30'W 510000

District 4 - West Sheet
Map prepared by:
Vermont Agency of Transportation - Mapping Section
219 North Main Street
Barre, VT 05641
Telephone: 802-828-2600



- VTrans Maintenance District Office
- VTrans Maintenance Facility
- State Bridge or Culvert Identifier
- Town Bridge or Culvert Identifier
- Local Bridge Data
- Local Culvert Data (width 6 feet and larger)

Highways

- Interstate
- Interstate Ramp
- Divided U.S. Highway
- U.S. Highway Ramp
- U.S. Highway
- State Highway - Paved
- State Highway - Gravel
- State Highway Ramp - Paved
- Town Highway - Paved
- Town Highway - Unpaved
- Town Highway - Unimproved or Impossible
- Legal Trail
- Discontinued
- National or State Forest Highway
- Railroad
- Ferry
- Public Airport

Federal Aid Route

- Principal Arterial
- Minor Arterial
- Major Collector
- Minor Collector-not Federal Aid eligible

Political Boundary

- State Boundary
- County Boundary
- Town Boundary
- Village Boundary
- Urban Compact Boundary
- City, Urban Compact, Village
- Stream or Brook
- Public Land - State/Municipal
- Green Mountain National Forest

Emergency Response Site

- Fire Station
- Law Enforcement
- Hospital
- Building

VTrans District (with extensions)

- 1 - Bennington District
- 2 - Dummerston District
- 3 - Mendon District
- 4 - White River Jct. District
- 5 - Colchester District
- 6 - Berlin/HQ District
- 7 - St. Johnsbury District
- 8 - St. Albans District
- 9 - Derby District