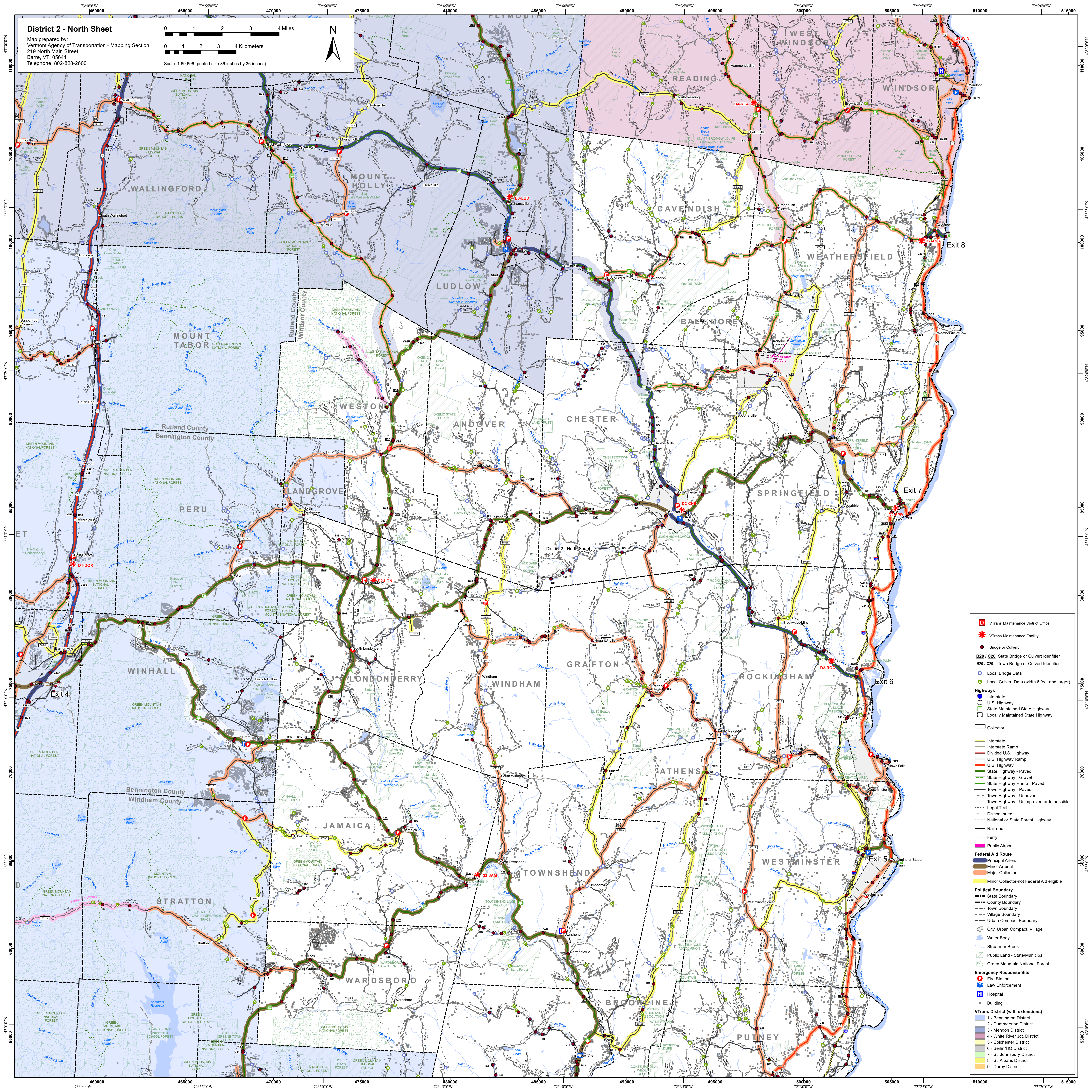
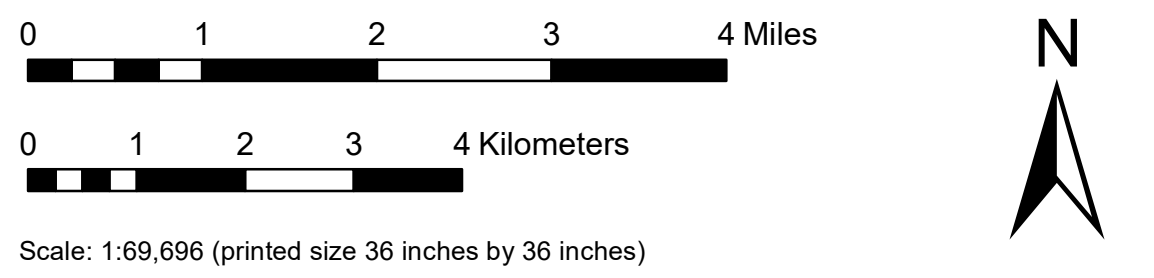


District 2 - North Sheet

Map prepared by:
Vermont Agency of Transportation - Mapping Section
219 North Main Street
Barre, VT 05641
Telephone: 802-828-2600



- D** VTrans Maintenance District Office
- *** VTrans Maintenance Facility
- Bridge or Culvert
- B20 / C20** State Bridge or Culvert Identifier
- B20 / C20** Town Bridge or Culvert Identifier
- Local Bridge Data
- Local Culvert Data (width 6 feet and larger)
- Highways**
 - Interstate
 - U.S. Highway
 - State Maintained State Highway
 - Locally Maintained State Highway
 - Collector
 - Interstate
 - Interstate Ramp
 - Divided U.S. Highway
 - U.S. Highway Ramp
 - U.S. Highway
 - State Highway - Paved
 - State Highway - Gravel
 - State Highway Ramp - Paved
 - Town Highway - Paved
 - Town Highway - Unpaved
 - Town Highway - Unimproved or Impossible
 - Legal Trail
 - Discontinued
 - National or State Forest Highway
 - Railroad
 - Ferry
 - Public Airport
- Federal Aid Route**
 - Principal Arterial
 - Minor Arterial
 - Major Collector
 - Minor Collector-not Federal Aid eligible
- Political Boundary**
 - State Boundary
 - County Boundary
 - Town Boundary
 - Village Boundary
 - Urban Compact Boundary
 - City, Urban Compact, Village
 - Water Body
 - Stream or Brook
 - Public Land - State/Municipal
 - Green Mountain National Forest
- Emergency Response Site**
 - Fire Station
 - Law Enforcement
 - Hospital
 - Building
- VTrans District (with extensions)**
 - 1 - Bennington District
 - 2 - Dummerston District
 - 3 - Mendon District
 - 4 - White River Jct. District
 - 5 - Colchester District
 - 6 - Berlin/HQ District
 - 7 - St. Johnsbury District
 - 8 - St. Albans District
 - 9 - Derby District