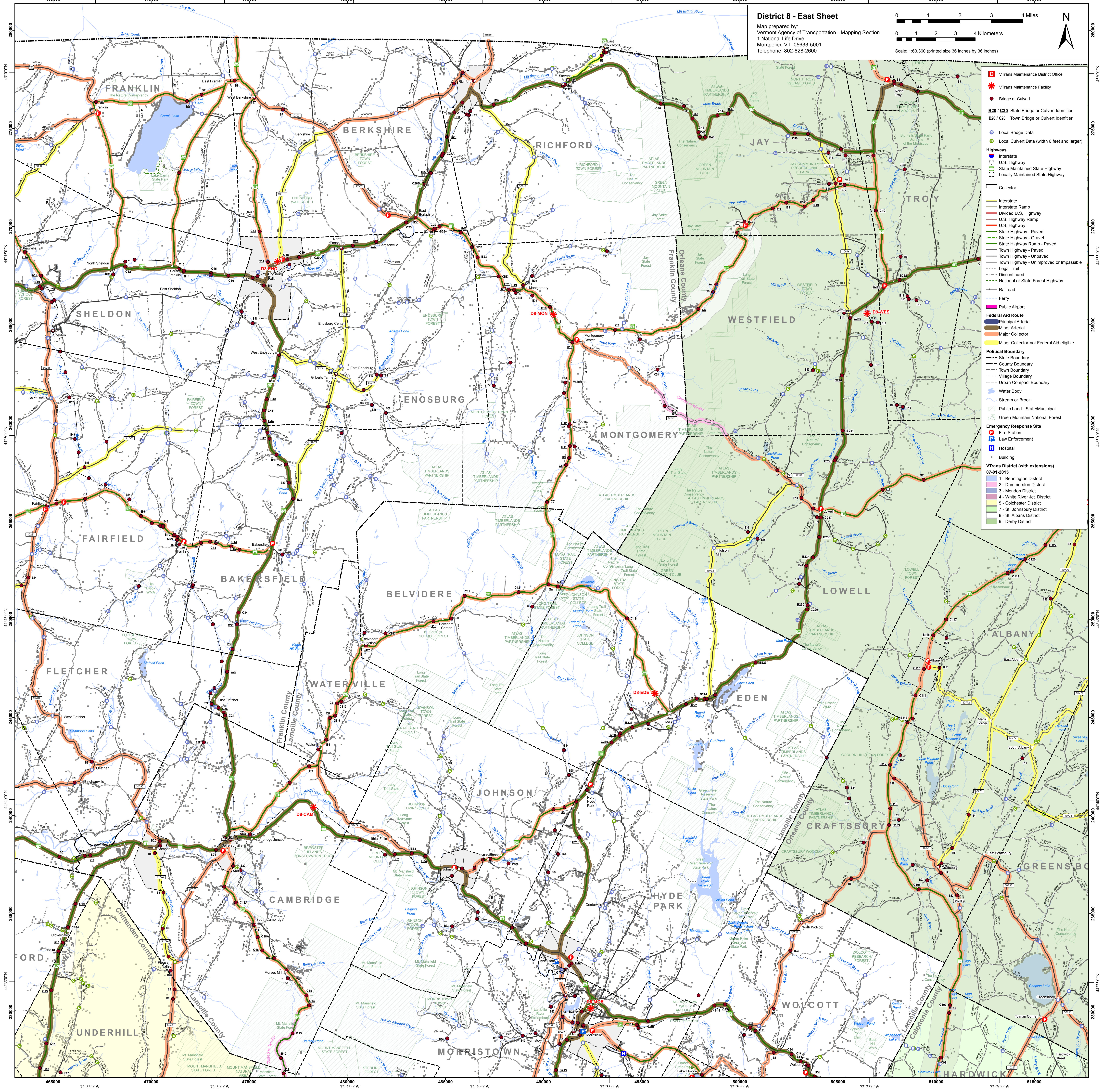
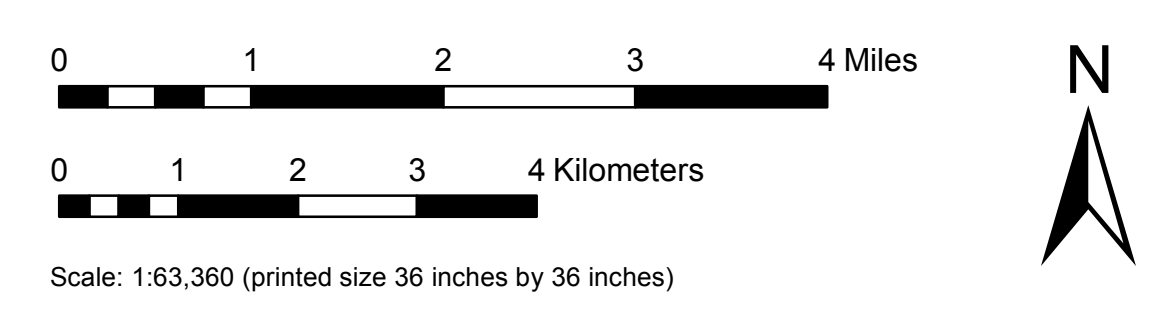


District 8 - East Sheet

Map prepared by:
Vermont Agency of Transportation - Mapping Section
1 National Life Drive
Montpelier, VT 05633-5001
Telephone: 802-828-2600



- VTans Maintenance District Office**
- VTans Maintenance Facility**
- Bridge or Culvert**
- B20 / C20** State Bridge or Culvert Identifier
- B20 / C20** Town Bridge or Culvert Identifier
- Local Bridge Data**
- Local Culvert Data (width 6 feet and larger)**
- Highways**
- Interstate**
- U.S. Highway**
- State Maintained State Highway**
- Locally Maintained State Highway**
- Collector**
- Interstate**
- Interstate Ramp**
- Divided U.S. Highway**
- U.S. Highway Ramp**
- U.S. Highway**
- State Highway - Paved**
- State Highway - Gravel**
- State Highway Ramp - Paved**
- State Highway - Unpaved**
- Town Highway - Paved**
- Town Highway - Unpaved or Impossible**
- Legal Trail**
- Discontinued**
- National or State Forest Highway**
- Railroad**
- Ferry**
- Public Airport**
- Federal Aid Route**
- Principal Arterial**
- Minor Arterial**
- Major Collector**
- Minor Collector-not Federal Aid eligible**
- Political Boundary**
- State Boundary**
- County Boundary**
- Town Boundary**
- Village Boundary**
- Urban Compact Boundary**
- Water Body**
- Stream or Brook**
- Public Land - State/Municipal**
- Green Mountain National Forest**
- Emergency Response Site**
- Fire Station**
- Law Enforcement**
- Hospital**
- Building**
- VTans District (with extensions) 07-01-2015**
- 1 - Bennington District
- 2 - Dummerston District
- 3 - Madson District
- 4 - White River Jct. District
- 5 - Colchester District
- 7 - St. Johnsbury District
- 8 - St. Albans District
- 9 - Derby District