

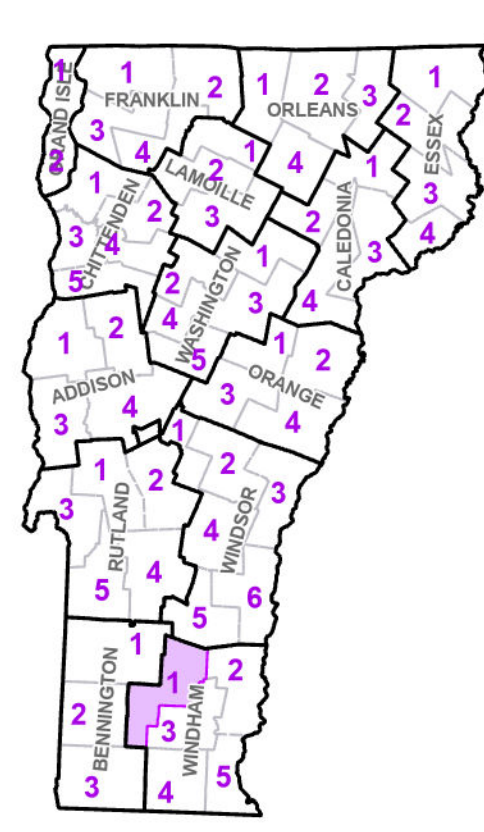
- Interstate
- U.S. Route
- Vermont Route
- Town Highway
- Interstate
- US Route Divided
- US Route
- State Route Paved
- State Route Unpaved
- Town Highway Paved
- Town Highway Unpaved
- Unimproved or Impassible
- Discontinued Highway
- Town Legal Trail

- Winter Road Closure
- Railroad
- Federal Aid Route
- Principal Arterial
- Minor Arterial
- Major Collector
- Minor Collector - Urban
- Minor Collector-Rural (not Federal Aid eligible)
- VTrans Maintenance District Office
- Emergency Response Site
- Fire Station
- Law Enforcement
- Hospital
- Building

- State Capital (Montpelier)
- Localities
- Bridge or Culvert
- Water Body
- Stream or Brook
- Public Airport
- Political Boundary**
- State Boundary
- County Boundary
- Town Boundary
- Village Boundary
- Urban Compact Boundary
- Public Land - State/Municipal
- Green Mountain National Forest
- County Subtle

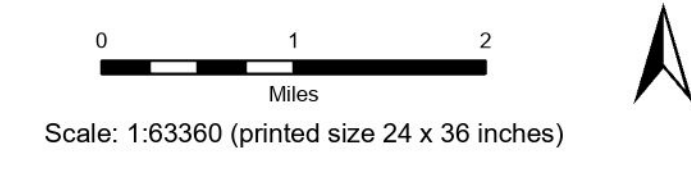
TOWN	TOWN
ANDOVER	MANCHESTER CENTER DEPOSIT URBAN COMPACT
ATHENS	MANCHESTER VILLAGE
BRATTLEBORO	MARLBORO
BROOKLINE	MOUNT TABOR
CHESTER	NEWFANE
DORSET	NEWFANE VILLAGE
DOVER	PERU
DUMMERSTON	SEARSBURG
GLASTENBURY	SOMERSET
GRAFTON	STRATTON
JAMAICA	SUNDERLAND
LANDGROVE	TOWNSHEND
LONDONDERRY	TOWNSHEND VILLAGE
MANCHESTER	WARDSBORO

Vermont State Plane Coordinate System
 North American Datum of 1983
 SPCS Zone Identifier: 4400
 Geoidic Reference System 80
 5,000-meter grid, Easting - Northing

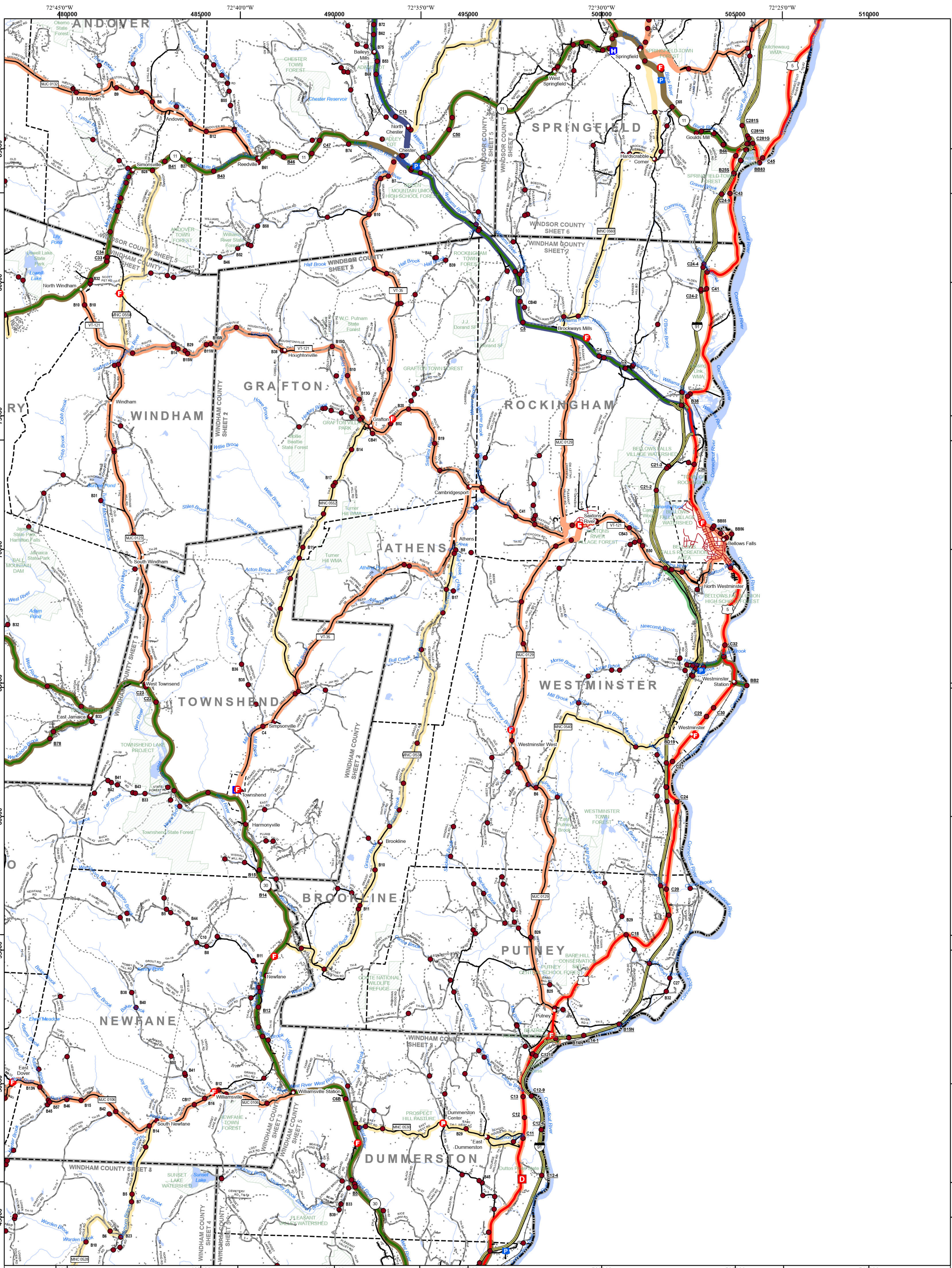


VERMONT COUNTY - TOWN MAP SERIES
WINDHAM COUNTY
SHEET 1 OF 5

Prepared by the
 Vermont Agency of Transportation
 Mapping Section
 in cooperation with
 U.S. Department of Transportation
 Federal Highway Administration
 August 2024



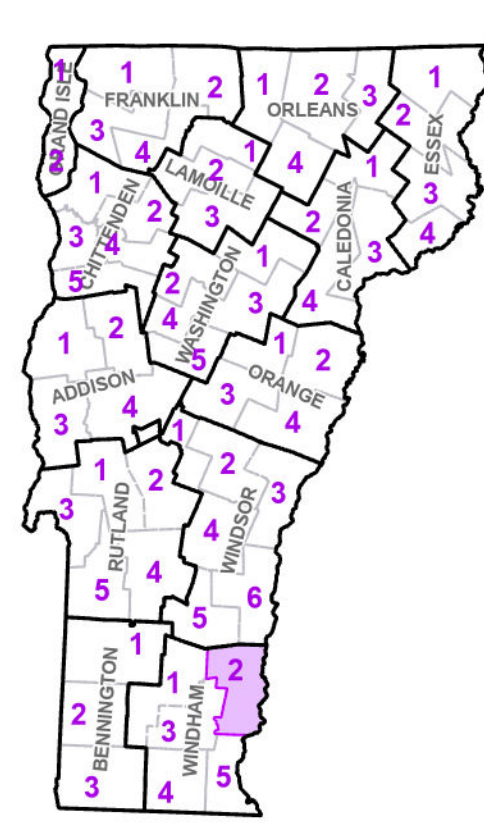
This map was funded in part through grants from the Federal Highway Administration, U.S. Department of Transportation. The representation of the authors expressed herein do not necessarily state or reflect those of the U. S. Department of Transportation.



- Interstate
- U.S. Route
- Vermont Route
- Town Highway
- Interstate
- US Route Divided
- US Route
- State Route Paved
- State Route Unpaved
- Town Highway Paved
- Town Highway Unpaved
- Unimproved or Impassible
- Discontinued Highway
- Town Legal Trail
- Winter Road Closure
- Railroad
- Federal Aid Route
 - Principal Arterial
 - Minor Arterial
 - Major Collector
 - Minor Collector - Urban
 - Minor Collector-Rural (not Federal Aid eligible)
- VTrans Maintenance District Office
- Emergency Response Site
 - Fire Station
 - Law Enforcement
 - Hospital
 - Building
- State Capital (Montpelier)
- Localities
- Bridge or Culvert
- Water Body
- Stream or Brook
- Public Airport

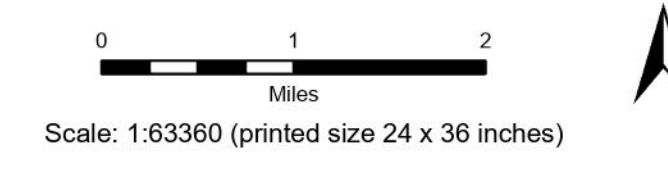
TOWN	TOWN
ANDOVER	NEWFANE VILLAGE
ATHENS	PUTNEY
BELLOWS FALLS VILLAGE	ROCKINGHAM
BRATTLEBORO	SAXTONS RIVER VILLAGE
BROOKLINE	SPRINGFIELD
CHESTER	SPRINGFIELD URBAN COMPACT
CHESTER URBAN COMPACT	TOWNSHEND
DOVER	TOWNSHEND VILLAGE
DUMMERSTON	WARDSBORO
GRAFTON	WESTMINSTER
JAMAICA	WESTMINSTER VILLAGE
LONDONDERRY	WESTON
MARLBORO	WINDHAM
NEWFANE	

Vermont State Plane Coordinate System
 North American Datum of 1983
 SPCS Zone Identifier: 4400
 Geoidic Reference System 80
 5,000-meter grid, Easting - Northing



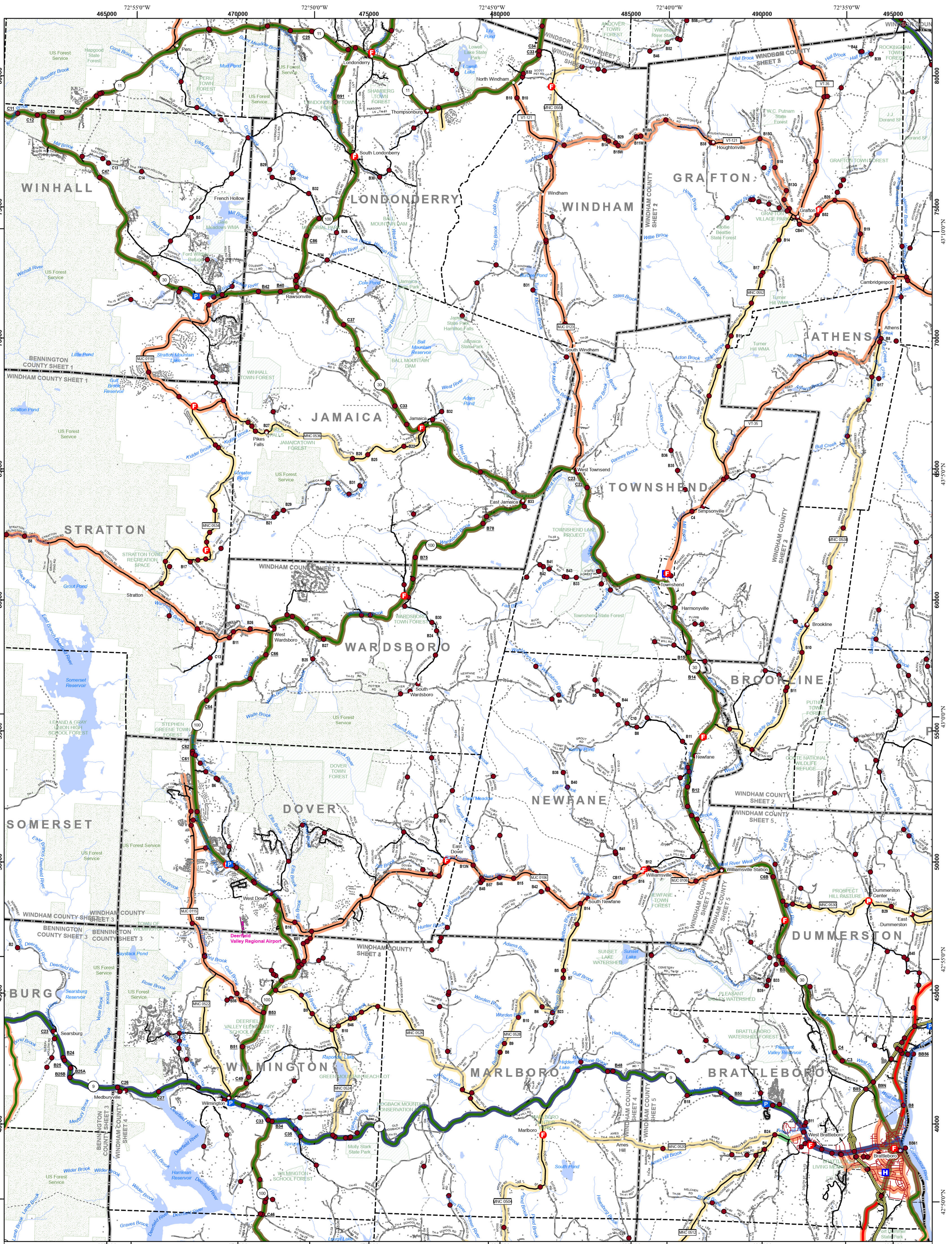
VERMONT
 COUNTY - TOWN MAP SERIES
WINDHAM COUNTY
 SHEET 2 OF 5

Prepared by the
 Vermont Agency of Transportation
 Mapping Section
 in cooperation with
 U.S. Department of Transportation
 Federal Highway Administration
 August 2024



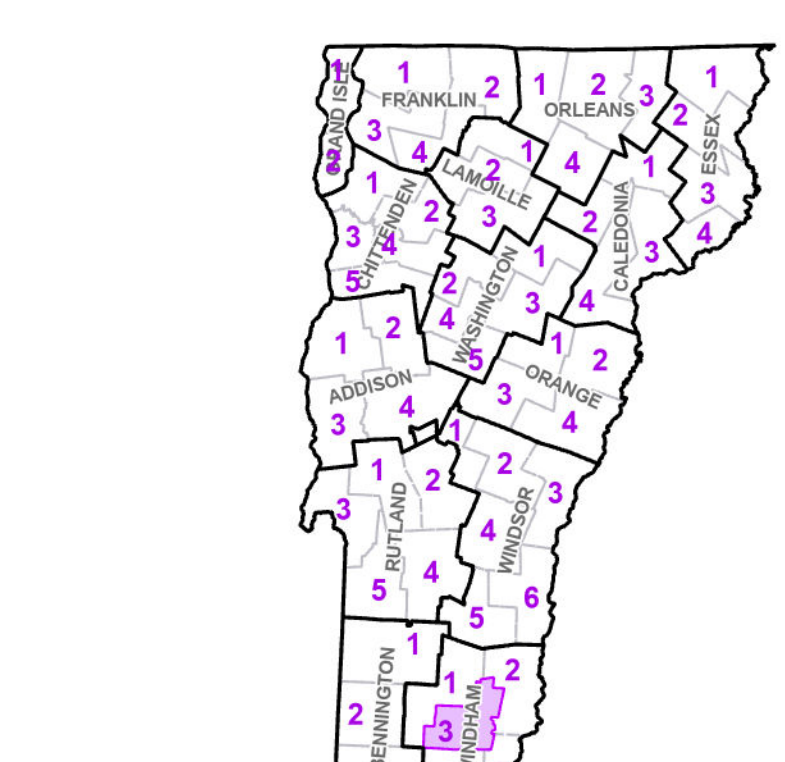
Contact Information: Vermont Agency of Transportation
 Division of Policy, Planning and Intermodal Development, Mapping Section
 219 N. Main St., Barre, VT 05641, Telephone: 802-828-2600

This map was funded in part through grants from the Federal Highway Administration, U.S. Department of Transportation. The representation of the authors expressed herein do not necessarily state or reflect those of the U.S. Department of Transportation.



- Interstate
 - U.S. Route
 - Vermont Route
 - Town Highway
 - Interstate
 - US Route Divided
 - US Route
 - State Route Paved
 - State Route Unpaved
 - Town Highway Paved
 - Town Highway Unpaved
 - Unimproved or Impassible
 - Discontinued Highway
 - Town Legal Trail
- Winter Road Closure
 - Railroad
 - Federal Aid Route
 - Principal Arterial
 - Minor Arterial
 - Major Collector
 - Minor Collector - Urban
 - Minor Collector-Rural (not Federal Aid eligible)
 - VTrans Maintenance District Office
 - Emergency Response Site
 - Fire Station
 - Law Enforcement
 - Hospital
 - Building
- State Capital (Montpelier)
 - Localities
 - Bridge or Culvert
 - Water Body
 - Stream or Brook
 - Public Airport
- Political Boundary**
 - State Boundary
 - County Boundary
 - Town Boundary
 - Village Boundary
 - Urban Compact Boundary
 - Public Land - State/Municipal
 - Green Mountain National Forest
 - County Subtle

TOWN	TOWN
ANDOVER	LONDONDERRY
ATHENS	MARLBORO
BRATTLEBORO	NEWFANE
BRATTLEBORO URBAN COMPACT	NEWFANE VILLAGE
BROOKLINE	PERU
CHESTER	PUTNEY
DORSET	READSBORO
DOVER	ROCKINGHAM
DUMMERSTON	SEARSBURG
GRAFTON	SOMERSET
GUILFORD	SPRINGFIELD
HALIFAX	STRATTON
JAMAICA	TOWNSEND
LANDROVE	TOWNSEND VILLAGE



VERMONT COUNTY - TOWN MAP SERIES
WINDHAM COUNTY
SHEET 3 OF 5

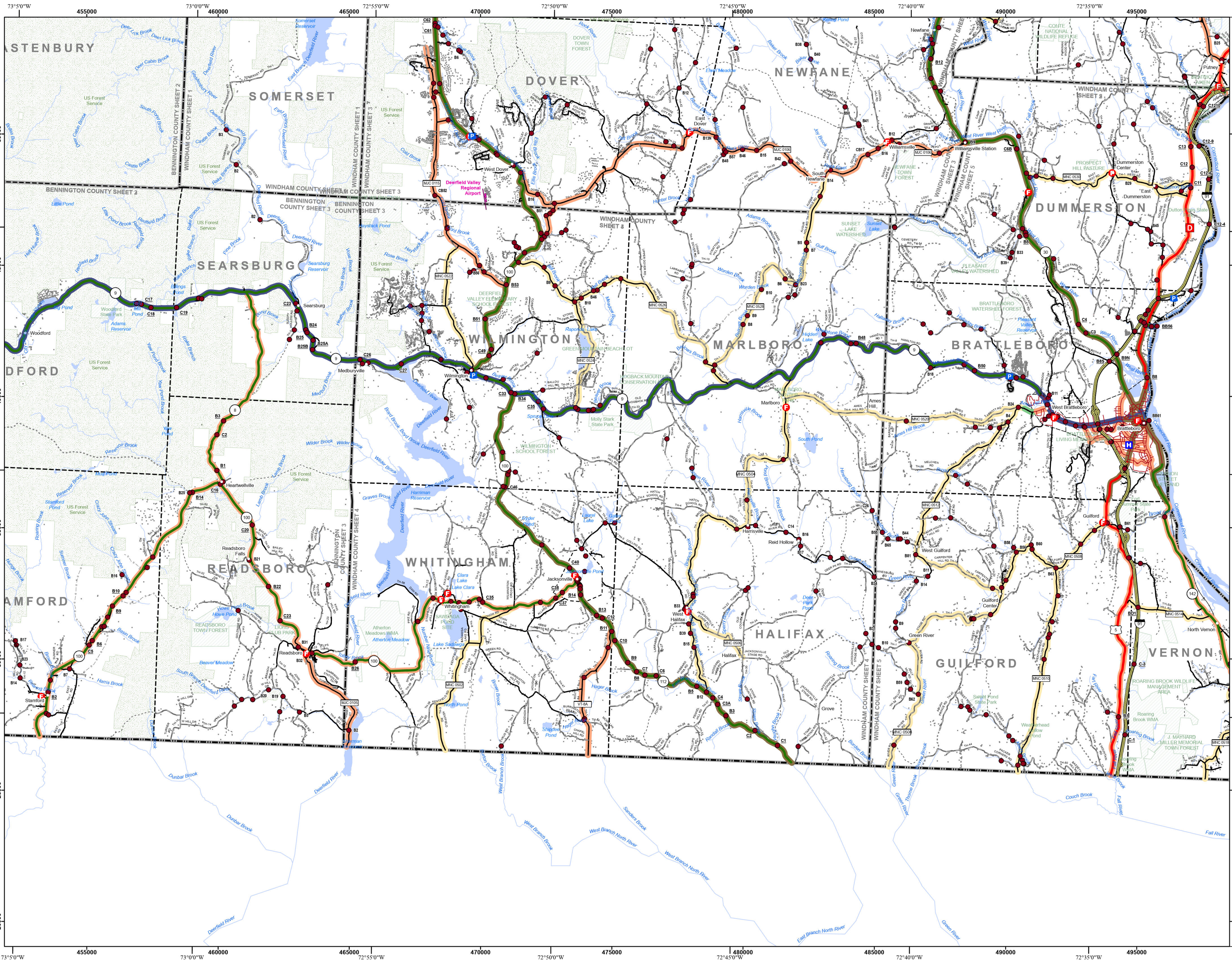
Prepared by the
 Vermont Agency of Transportation
 Mapping Section
 in cooperation with
 U.S. Department of Transportation
 Federal Highway Administration
 August 2024

Scale: 1:63360 (printed size 24 x 36 inches)

0 1 2
 Miles

Contact Information: Vermont Agency of Transportation
 Division of Policy, Planning and Intermodal Development, Mapping Section
 219 N. Main St., Barre, VT 05641, Telephone: 802-828-2600

This map was funded in part through grants from the Federal Highway Administration, U.S. Department of Transportation. The representation of the authors expressed herein do not necessarily state or reflect those of the U. S. Department of Transportation.

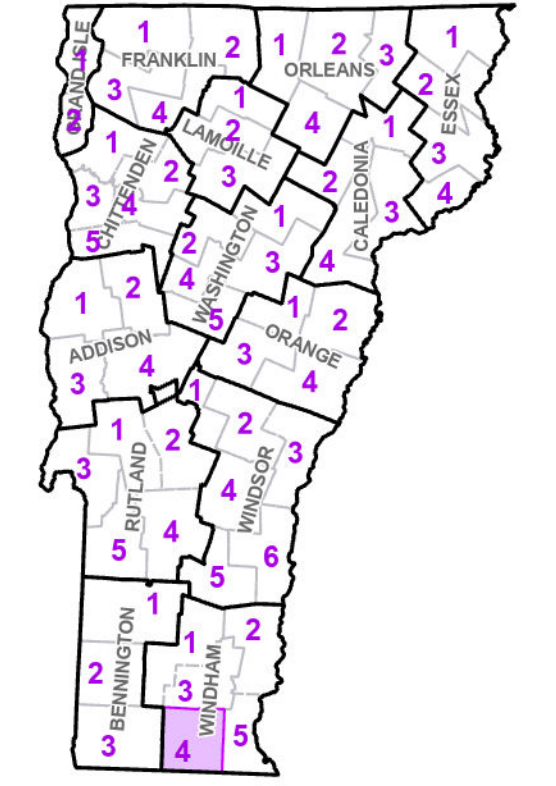


- Interstate
 - U.S. Route
 - Vermont Route
 - Town Highway
 - Interstate Divided
 - US Route Divided
 - State Route Paved
 - State Route Unpaved
 - Town Highway Paved
 - Town Highway Unpaved
 - Unimproved or Impossible
 - Discontinued Highway
 - Town Legal Trail
 - Winter Road Closure
 - Railroad
 - Principal Arterial
 - Minor Arterial
 - Major Collector
 - Minor Collector - Urban
 - Minor Collector-Rural (not Federal Aid eligible)
 - VTrans Maintenance District Office
- Emergency Response Site**
- Fire Station
 - Law Enforcement
 - Hospital
 - Building
 - State Capital (Montpelier)
 - Localities
 - Bridge or Culvert
 - Water Body
 - Stream or Brook
 - Public Airport
 - State Boundary
 - County Boundary
 - Town Boundary
 - Village Boundary
 - Urban Compact Boundary
 - Public Land - State/Municipal
 - Green Mountain National Forest
 - County Subtle

TOWNSHIP
HALIFAX
JACKSONVILLE VILLAGE
MARLBORO
WHITINGHAM
WILMINGTON

B20 / C20 State Bridge or Culvert Identifier
 B20 / C20 Town Bridge or Culvert Identifier

Vermont State Plane Coordinate System
 North American Datum of 1983
 SPCS Zone Identifier: 4400
 Geodetic Reference System 80
 5,000-meter grid, Easting - Northing



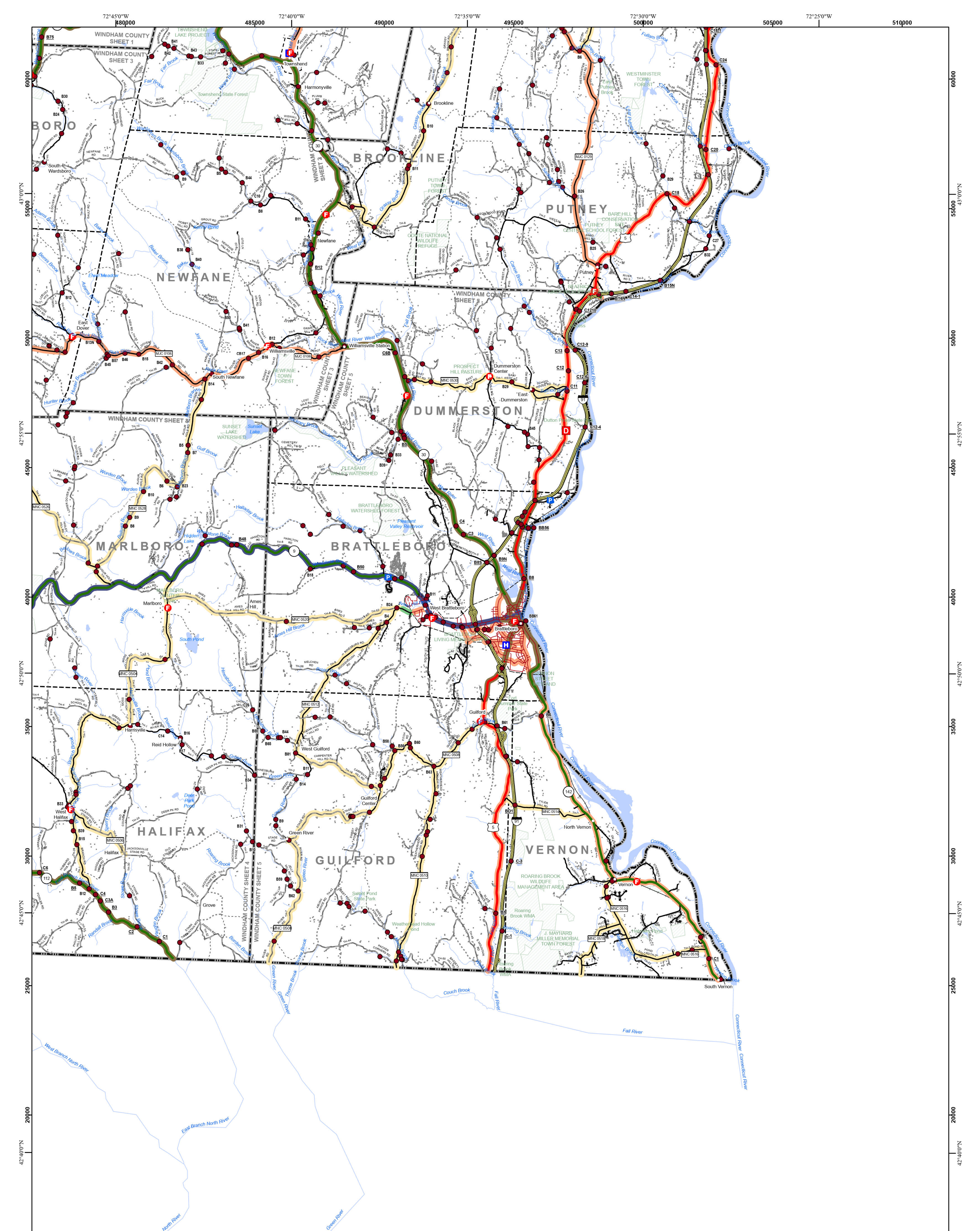
VERMONT COUNTY - TOWN MAP SERIES
WINDHAM COUNTY SHEET 4 OF 5

Prepared by the
 Vermont Agency of Transportation
 Mapping Section
 in cooperation with
 U.S. Department of Transportation
 Federal Highway Administration
 August 2024



Contact information: Vermont Agency of Transportation
 Division of Policy, Planning and Intermodal Development, Mapping Section
 219 N. Main St., Barre, VT 05641
 Telephone: 802-828-2600

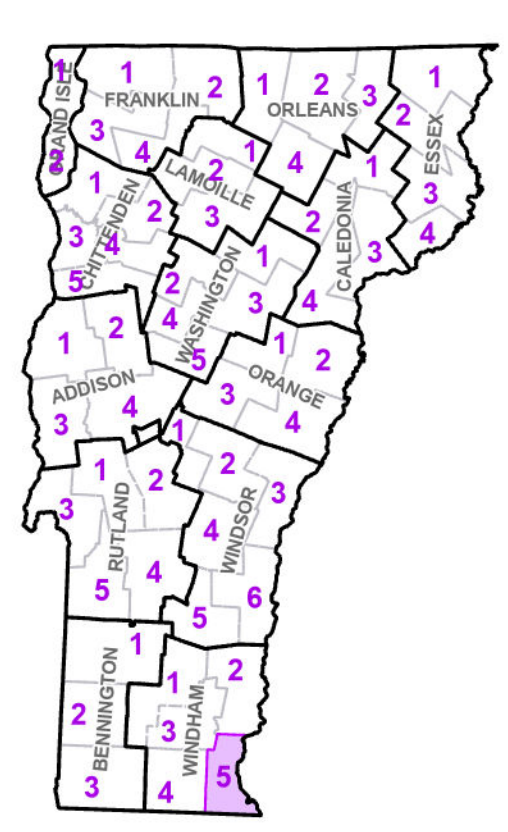
This map was funded in part through grants from the Federal Highway Administration, U.S. Department of Transportation. The representation of the authors expressed herein do not necessarily state or reflect those of the U.S. Department of Transportation.



- Interstate
- U.S. Route
- Vermont Route
- Town Highway
- Interstate
- US Route Divided
- US Route
- State Route Paved
- State Route Unpaved
- Town Highway Paved
- Town Highway Unpaved
- Unimproved or Impassible
- Discontinued Highway
- Town Legal Trail
- Winter Road Closure
- Railroad
- Federal Aid Route
- Principal Arterial
- Minor Arterial
- Major Collector
- Minor Collector - Urban
- Minor Collector-Rural (not Federal Aid eligible)
- VTrans Maintenance District Office
- Emergency Response Site
- Fire Station
- Law Enforcement
- Hospital
- Building
- Slate Capital (Montpelier)
- Localities
- Bridge or Culvert
- Water Body
- Stream or Brook
- Public Airport
- Political Boundary
- State Boundary
- County Boundary
- Town Boundary
- Village Boundary
- Urban Compact Boundary
- Public Land - State/Municipal
- Green Mountain National Forest
- County Subtle

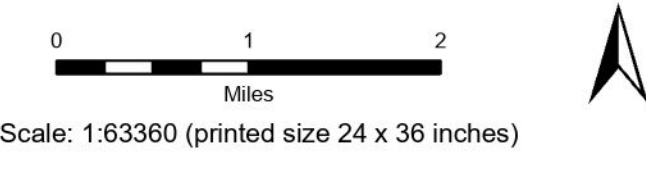
TOWN	TOWN
BRATTLEBORO	NEWFANE
BRATTLEBORO URBAN COMPACT	NEWFANE VILLAGE
BROOKLINE	PUTNEY
DOVER	TOWNSHEND
DUMMERSTON	TOWNSHEND VILLAGE
GUILFORD	VERNON
HALIFAX	WARDSBORO
JAMALCA	WEST BRATTLEBORO URBAN COMPACT
MARLBORO	WESTMINSTER

Vermont State Plane Coordinate System
 North American Datum of 1983
 SPCS Zone Identifier: 4400
 Geoidic Reference System 80
 5,000-meter grid, Easting - Northing



VERMONT COUNTY - TOWN MAP SERIES
WINDHAM COUNTY
SHEET 5 OF 5

Prepared by the
Vermont Agency of Transportation
 Mapping Section
 in cooperation with
U.S. Department of Transportation
 Federal Highway Administration
 August 2024



Contact Information: Vermont Agency of Transportation
 Division of Policy, Planning and Intermodal Development, Mapping Section
 219 N. Main St., Barre, VT 05641, Telephone: 802-828-2600

This map was funded in part through grants from the Federal Highway Administration, U.S. Department of Transportation. The representation of the authors expressed herein do not necessarily state or reflect those of the U.S. Department of Transportation.