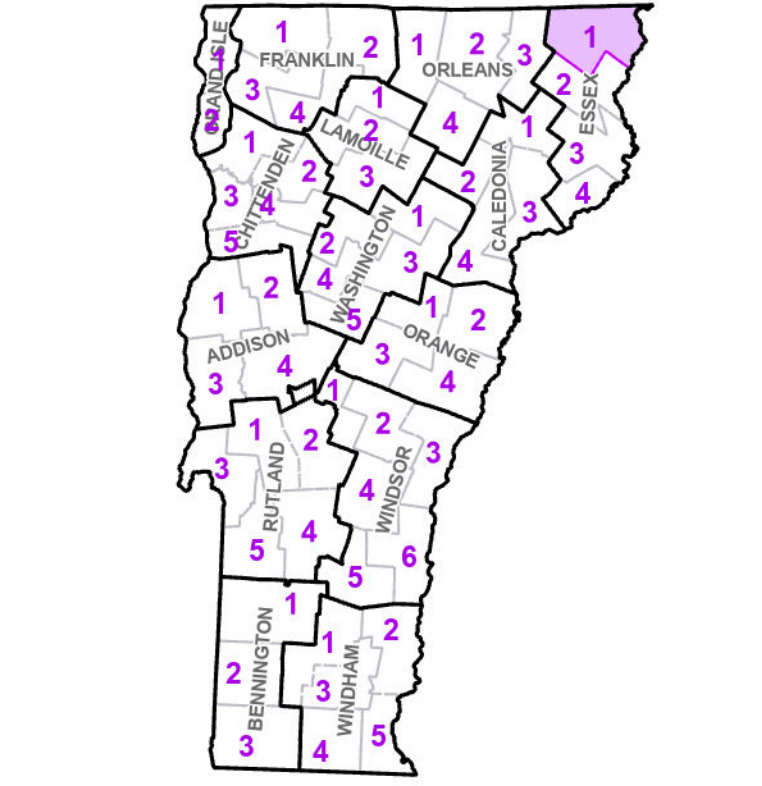


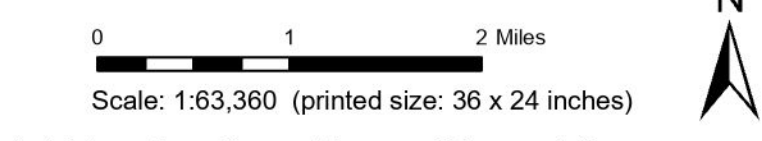
- | TOWNNAME |  |
|----------|--|
| [Symbol] | INTERSTATE   |
| [Symbol] | U.S. ROUTE   |
| [Symbol] | VERMONT ROUTE                                      |
| [Symbol] | TOWN HIGHWAY                                       |
| [Symbol] | INTERSTATE   |
| [Symbol] | U.S. ROUTE DIVIDED                                 |
| [Symbol] | U.S. ROUTE   |
| [Symbol] | STATE ROUTE PAVED                                  |
| [Symbol] | STATE ROUTE UNPAVED                                |
| [Symbol] | TOWN HIGHWAY PAVED                                 |
| [Symbol] | TOWN HIGHWAY UNPAVED                               |
| [Symbol] | UNIMPROVED OR IMPASSIBLE                           |
| [Symbol] | DISCONTINUED HIGHWAY                               |
| [Symbol] | TOWN LEGAL TRAIL                                   |
| [Symbol] | WINTER ROAD CLOSURE                                |
| [Symbol] | RAILROAD   |
| [Symbol] | PRINCIPAL ARTERIAL                                 |
| [Symbol] | MINOR ARTERIAL                                     |
| [Symbol] | MAJOR COLLECTOR                                    |
| [Symbol] | MINOR COLLECTOR - URBAN                            |
| [Symbol] | MINOR COLLECTOR - RURAL (NOT FEDERAL AID ELIGIBLE) |
| [Symbol] | FEDERAL AID ELIGIBLE                               |
| [Symbol] | VTRANS MAINTENANCE DISTRICT OFFICE                 |
- Emergency Response Site**
- [Symbol] Fire Station
  - [Symbol] Law Enforcement
  - [Symbol] Hospital
  - [Symbol] Building
  - [Symbol] State Capital (Montpelier)
  - [Symbol] Localities
  - [Symbol] Bridge or Culvert
  - [Symbol] Water Body
  - [Symbol] Stream or Brook
  - [Symbol] Public Airport
  - [Symbol] State Boundary
  - [Symbol] County Boundary
  - [Symbol] Town Boundary
  - [Symbol] Village Boundary
  - [Symbol] Urban Compact Boundary
  - [Symbol] Public Land - State/Municipal
  - [Symbol] Green Mountain National Forest
  - [Symbol] County Subtle
- B20 / C20** State Bridge or Culvert Identifier  
**B20 / C20** Town Bridge or Culvert Identifier

Vermont State Plane Coordinate System  
 North American Datum of 1983  
 SPCS Zone Identifier: 4400  
 Geodetic Reference System 80  
 5,000-meter grid, Easting - Northing

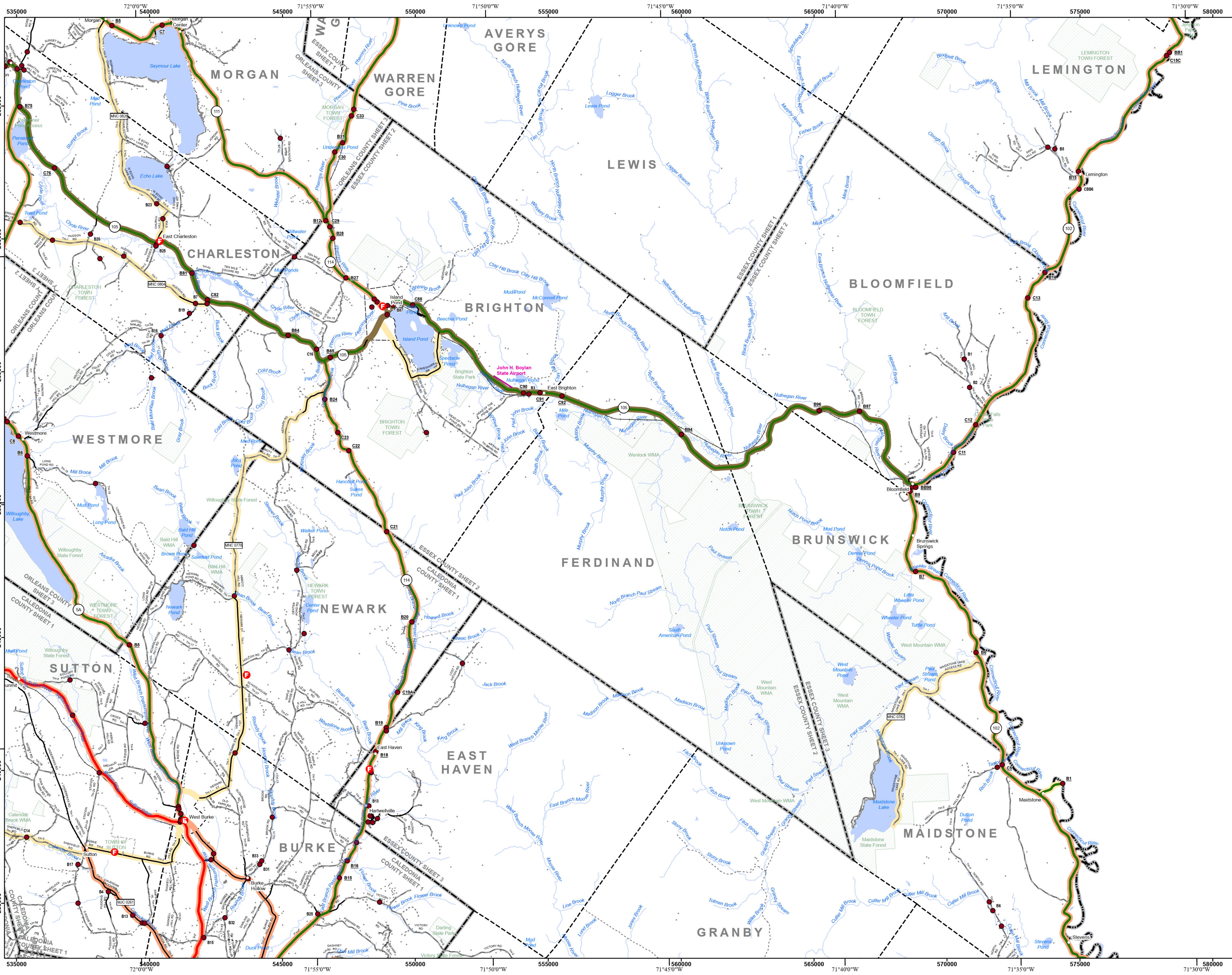


**VERMONT COUNTY - TOWN MAP SERIES**  
**ESSEX COUNTY SHEET 1 OF 4**

Prepared by the  
 Vermont Agency of Transportation  
 Mapping Section  
 in cooperation with  
 U.S. Department of Transportation  
 Federal Highway Administration  
 August 2024



Contact information: Vermont Agency of Transportation  
 Division of Policy, Planning and Intermodal Development, Mapping Section  
 219 N. Main St., Barre, VT 05641  
 Telephone: 802-828-2600  
 This map was funded in part through grants from the Federal Highway Administration,  
 U.S. Department of Transportation. The representation of the authors expressed herein  
 does not necessarily state or reflect those of the U.S. Department of Transportation.



TOWNSHIP	
BLOOMFIELD	
BRIGHTON	
BRUNSWICK	
EAST HAVEN	
FERDINAND	
ISLAND POND URBAN COMPACT	
LEWIS	
WARREN GORE	

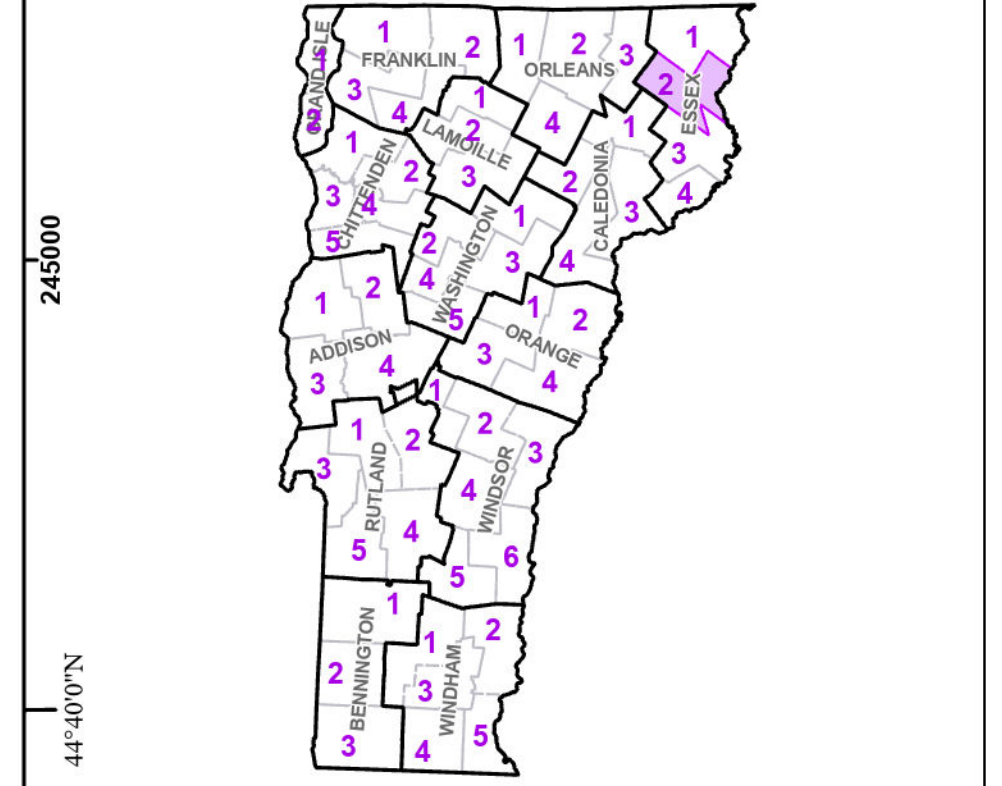
- Interstate
- U.S. Route
- Vermont Route
- Town Highway
- Interstate
- US Route Divided
- US Route
- State Route Paved
- State Route Unpaved
- Town Highway Paved
- Town Highway Unpaved
- Unimproved or Impossible
- Discontinued Highway
- Town Legal Trail
- Winter Road Closure
- Railroad
- Principal Arterial
- Minor Arterial
- Major Collector
- Minor Collector - Urban
- Minor Collector-Rural (not Federal Aid eligible)
- VTrans Maintenance District Office

**Emergency Response Site**

- Fire Station
- Law Enforcement
- Hospital
- Building
- Localities
- State Capital (Montpelier)
- Bridge or Culvert
- Water Body
- Stream or Brook
- Public Airport
- State Boundary
- County Boundary
- Town Boundary
- Village Boundary
- Urban Compact Boundary
- Public Land - State/Municipal
- Green Mountain National Forest
- County Subtle

**B20 / C20** State Bridge or Culvert Identifier  
**B20 / C20** Town Bridge or Culvert Identifier

Vermont State Plane Coordinate System  
 North American Datum of 1983  
 SPCS\_Zone\_Identifier: 4400  
 Geodetic Reference System 80  
 5,000-meter grid, Easting - Northing

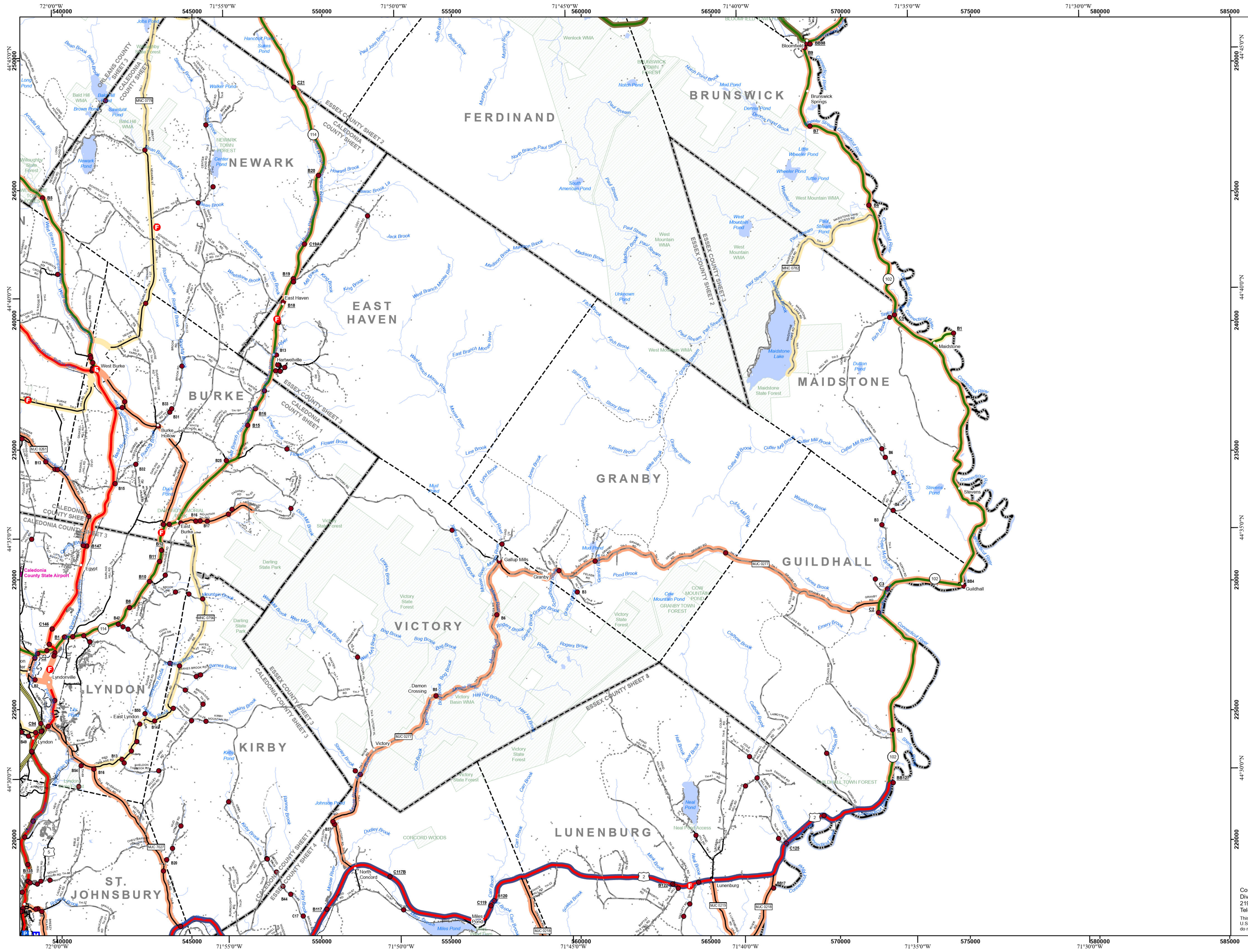


VERMONT  
 COUNTY - TOWN MAP SERIES  
**ESSEX COUNTY**  
**SHEET 2 OF 4**

Prepared by the  
 Vermont Agency of Transportation  
 Mapping Section  
 in cooperation with  
 U.S. Department of Transportation  
 Federal Highway Administration  
 August 2024

0 1 2 Miles  
 Scale: 1:63,360 (printed size: 36 x 24 inches)

Contact information: Vermont Agency of Transportation  
 Division of Policy, Planning and Intermodal Development, Mapping Section  
 219 N. Main St., Barre, VT 05641  
 Telephone: 802-828-2600  
 This map was funded in part through grants from the Federal Highway Administration, U.S. Department of Transportation. The representation of the authors expressed herein do not necessarily state or reflect those of the U.S. Department of Transportation.



TOWNNAME	
[Symbol]	EAST HAVEN
[Symbol]	GRANBY
[Symbol]	GUILDHALL
[Symbol]	LUNENBURG
[Symbol]	MAIDSTONE
[Symbol]	NEWARK
[Symbol]	VICTORY

- Interstate
- U.S. Route
- Vermont Route
- Town Highway
- Interstate
- US Route Divided
- US Route
- State Route Paved
- State Route Unpaved
- Town Highway Paved
- Town Highway Unpaved
- Unimproved or Impossible
- Discontinued Highway
- Town Legal Trail
- Winter Road Closure
- Railroad
- Principal Arterial
- Minor Arterial
- Major Collector
- Minor Collector - Urban
- Minor Collector-Rural (not Federal Aid eligible)
- VTrans Maintenance District Office

**Emergency Response Site**

- Fire Station
- Law Enforcement
- Hospital
- Building
- State Capital (Montpelier)
- Localities
- Bridge or Culvert
- Water Body
- Stream or Brook
- Public Airport
- State Boundary
- County Boundary
- Town Boundary
- Village Boundary
- Urban Compact Boundary
- Public Land - State/Municipal
- Green Mountain National Forest
- County Subtle

**B20 / C20** State Bridge or Culvert Identifier

**B20 / C20** Town Bridge or Culvert Identifier

Vermont State Plane Coordinate System  
 North American Datum of 1983  
 SPCS Zone Identifier: 4400  
 Geodetic Reference System 80  
 5,000-meter grid, Easting - Northing

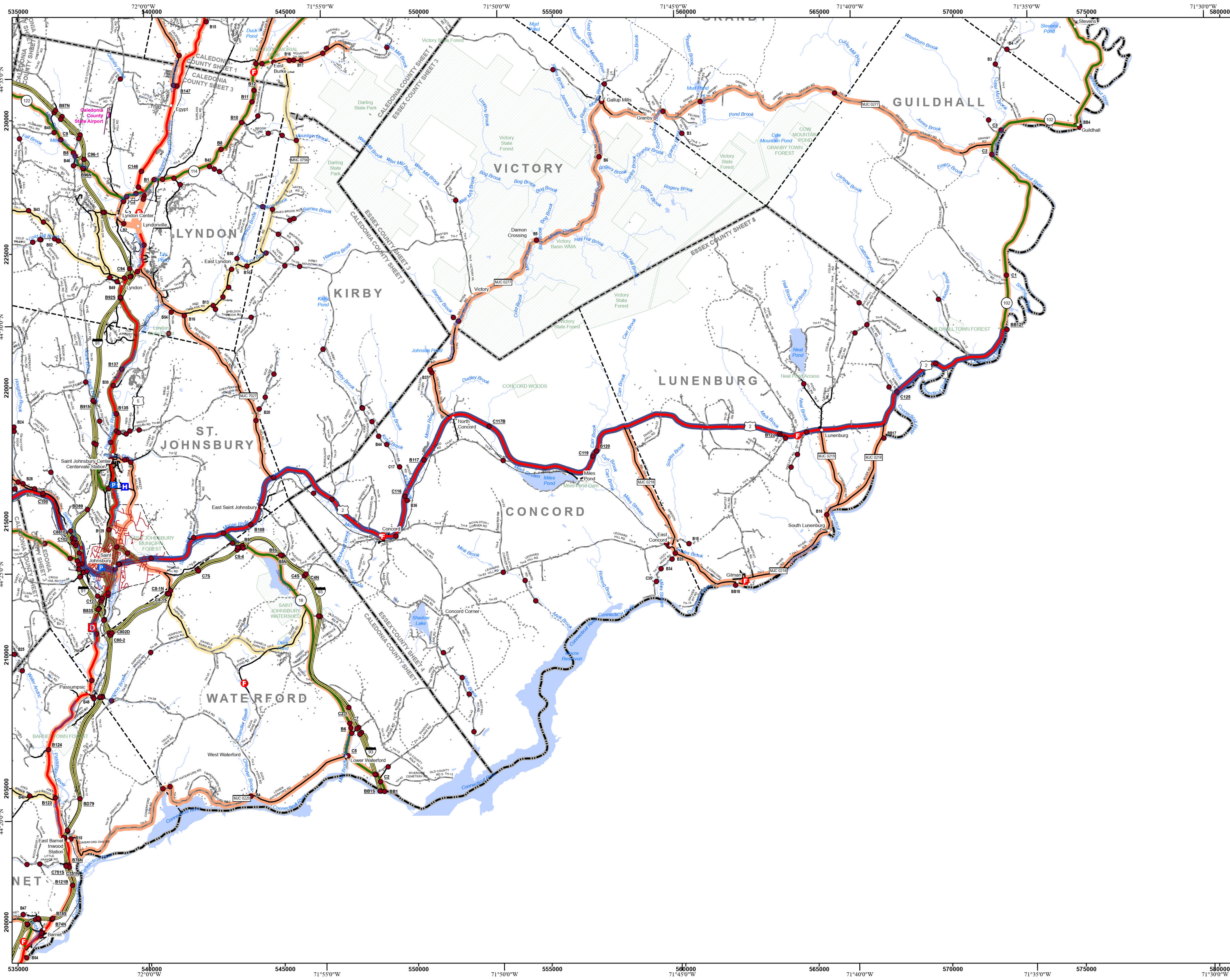
**VERMONT COUNTY - TOWN MAP SERIES**  
**ESSEX COUNTY SHEET 3 OF 4**

Prepared by the  
 Vermont Agency of Transportation  
 Mapping Section  
 in cooperation with  
 U.S. Department of Transportation  
 Federal Highway Administration  
 August 2024

0 1 2 Miles  
 Scale: 1:63,360 (printed size: 36 x 24 inches)

Contact information: Vermont Agency of Transportation  
 Division of Policy, Planning and Intermodal Development, Mapping Section  
 219 N. Main St., Barre, VT 05641  
 Telephone: 802-828-2600

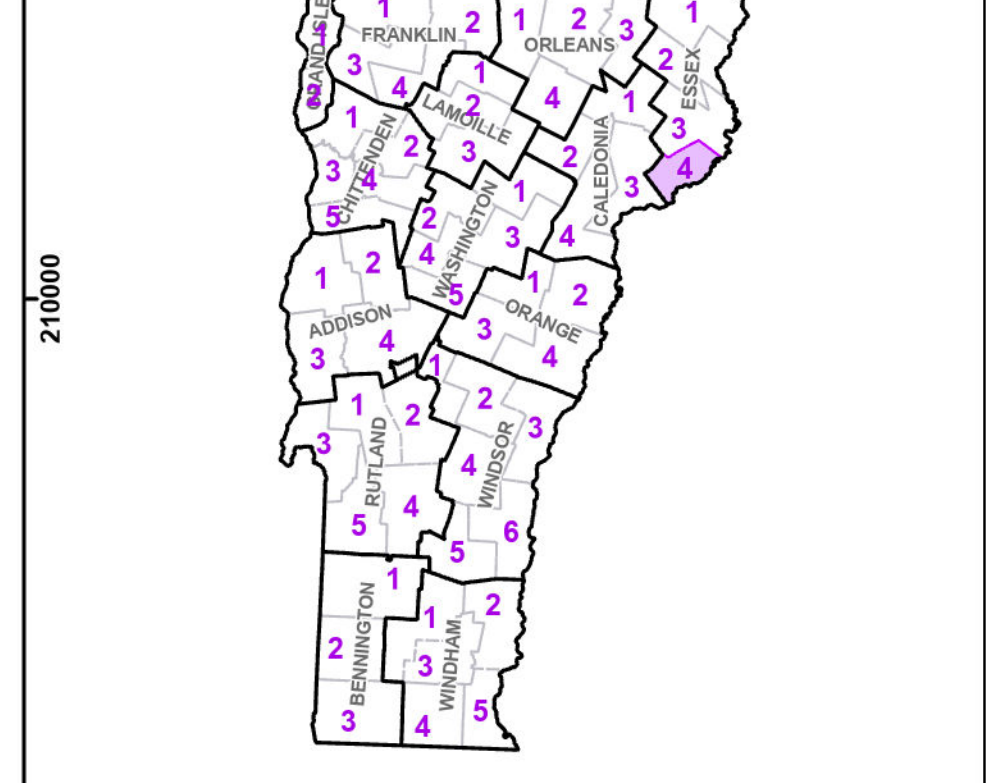
This map was funded in part through grants from the Federal Highway Administration, U.S. Department of Transportation. The representation of the authors expressed herein do not necessarily state or reflect those of the U.S. Department of Transportation.



- | TOWNNAME  |  |
|-----------|--|
| CONCORD   |  |
| GUILDHALL |  |
| KIRBY     |  |
| LUNENBURG |  |
| VICTORY   |  |
- Interstate
  - U.S. Route
  - Vermont Route
  - Town Highway
  - Interstate Divided
  - US Route Divided
  - US Route
  - State Route Paved
  - State Route Unpaved
  - Town Highway Paved
  - Town Highway Unpaved
  - Unimproved or Impossible
  - Discontinued Highway
  - Town Legal Trail
  - Winter Road Closure
  - Railroad
  - Principal Arterial
  - Minor Arterial
  - Major Collector
  - Minor Collector - Urban
  - Minor Collector - Rural (not Federal Aid eligible)
  - VTrans Maintenance District Office
- Emergency Response Site**
- Fire Station
  - Law Enforcement
  - Hospital
  - Building
  - State Capital (Montpelier)
  - Localities
  - Bridge or Culvert
  - Water Body
  - Stream or Brook
  - Public Airport
  - State Boundary
  - County Boundary
  - Town Boundary
  - Village Boundary
  - Urban Compact Boundary
  - Public Land - State/Municipal
  - Green Mountain National Forest
  - County Subtle

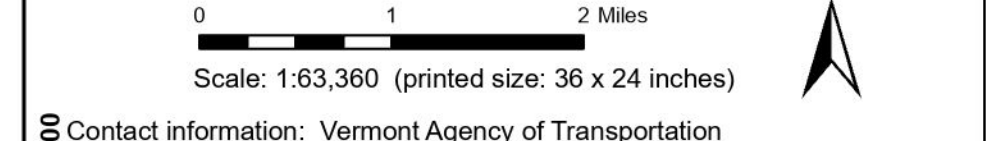
**B20 / C20** State Bridge or Culvert Identifier  
**B20 / C20** Town Bridge or Culvert Identifier

Vermont State Plane Coordinate System  
 North American Datum of 1983  
 SPCS Zone Identifier: 4400  
 Geodetic Reference System 80  
 5,000-meter grid, Easting - Northing



**VERMONT COUNTY - TOWN MAP SERIES**  
**ESSEX COUNTY SHEET 4 OF 4**

Prepared by the Vermont Agency of Transportation Mapping Section in cooperation with U.S. Department of Transportation Federal Highway Administration August 2024



Contact information: Vermont Agency of Transportation  
 Division of Policy, Planning and Intermodal Development, Mapping Section  
 219 N. Main St., Barre, VT 05641  
 Telephone: 802-828-2600

This map was funded in part through grants from the Federal Highway Administration, U.S. Department of Transportation. The representation of the authors expressed herein do not necessarily state or reflect those of the U.S. Department of Transportation.