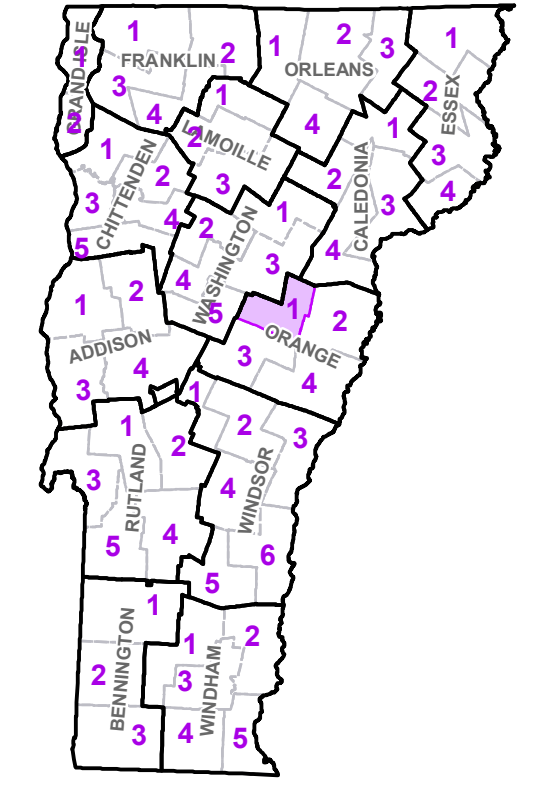


- Interstate
 - U.S. Route
 - Vermont Route
 - Town Highway
 - Interstate
 - US Route Divided
 - US Route
 - State Route Paved
 - State Route Unpaved
 - Town Highway Paved
 - Town Highway Unpaved
 - Unimproved or Impossible
 - Discontinued Highway
 - Town Legal Trail
 - Winter Road Closure
 - Railroad
- Federal Aid Route**
- Principal Arterial
 - Minor Arterial
 - Major Collector
 - Minor Collector-not Federal Aid eligible
- VTrans Maintenance District Office
- Emergency Response Site**
- Fire Station
 - Law Enforcement
 - Hospital
 - Building
 - Localities
 - State Capital (Montpelier)
 - Bridge or Culvert
 - Water Body
 - Stream or Brook
 - Public Airport
- State Boundary
 - County Boundary
 - Town Boundary
 - Village Boundary
 - Urban Compact Boundary
 - Public Land - State/Municipal
 - Green Mountain National Forest
 - County Subtile

TOWN	
Barre	
Barre City	
Berlin	
Bradford	
Braintree	
Brookfield	
Chelsea	
Corinth	
East Montpelier	
Fairlee	
Granville	
Groton	
Groton Village	
Marshall	
Middlesex	
Montpelier City	
Moretown	
Newbury	
Northfield	
Orange	
Plainfield	
Randolph	
Roxbury	
Ryegate	
Topsham	
Tunbridge	
Vershire	
Waitsfield	
Washington	
West Fairlee	
Williamstown	

B20 / C20 State Bridge or Culvert Identifier
 B20 / C20 Town Bridge or Culvert Identifier

Vermont State Plane Coordinate System
 North American Datum of 1983
 SPCS Zone Identifier: 4400
 Geodetic Reference System 80
 5,000-meter grid, Easting - Northing

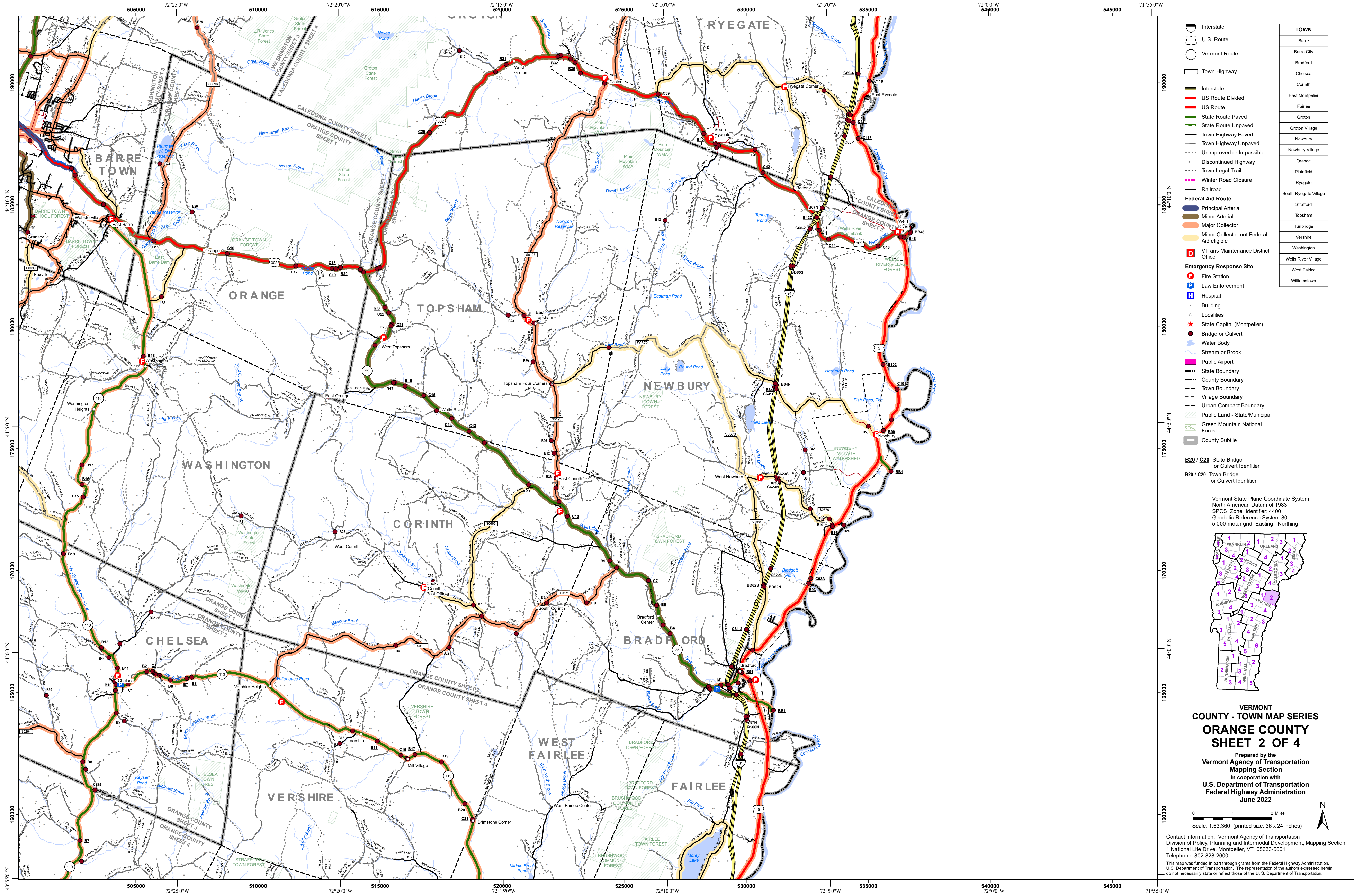


VERMONT COUNTY - TOWN MAP SERIES
ORANGE COUNTY
SHEET 1 OF 4

Prepared by the
 Vermont Agency of Transportation
 Mapping Section
 in cooperation with
 U.S. Department of Transportation
 Federal Highway Administration
 June 2022

0 1 2 Miles
 Scale: 1:63,360 (printed size: 36 x 24 inches)

Contact information: Vermont Agency of Transportation
 Division of Policy, Planning and Intermodal Development, Mapping Section
 1 National Life Drive, Montpelier, VT 05633-5001
 Telephone: 802-828-2600
 This map was funded in part through grants from the Federal Highway Administration, U.S. Department of Transportation. The representation of the authors expressed herein do not necessarily state or reflect those of the U.S. Department of Transportation.

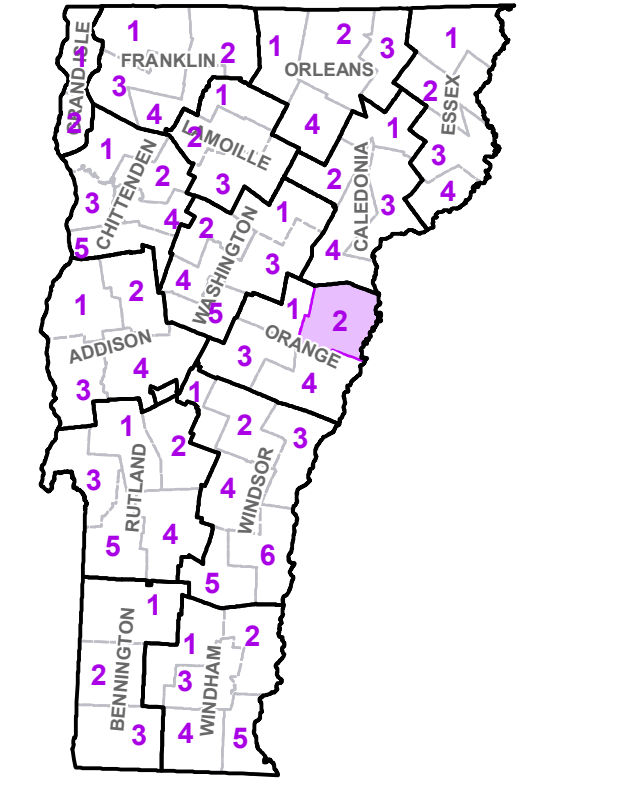


- Interstate
- U.S. Route
- Vermont Route
- Town Highway
- Interstate
- US Route Divided
- US Route
- State Route Paved
- State Route Unpaved
- Town Highway Paved
- Town Highway Unpaved
- Unimproved or Impassible
- Discontinued Highway
- Town Legal Trail
- Winter Road Closure
- Railroad
- Federal Aid Route**
- Principal Arterial
- Minor Arterial
- Major Collector
- Minor Collector-not Federal Aid eligible
- VTrans Maintenance District Office
- Emergency Response Site**
- Fire Station
- Law Enforcement
- Hospital
- Building
- Localities
- State Capital (Montpelier)
- Bridge or Culvert
- Water Body
- Stream or Brook
- Public Airport
- State Boundary
- County Boundary
- Town Boundary
- Village Boundary
- Urban Compact Boundary
- Public Land - State/Municipal
- Green Mountain National Forest
- County Subtle

TOWN	
Barre	
Barre City	
Bradford	
Chelsea	
Corinth	
East Montpelier	
Fairlee	
Groton	
Groton Village	
Newbury	
Newbury Village	
Orange	
Plainfield	
Ryegate	
South Ryegate Village	
Stratford	
Topsham	
Tunbridge	
Vershire	
Washington	
Wells River Village	
West Fairlee	
Williamstown	

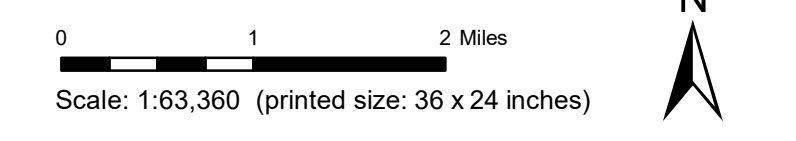
B20 / C20 State Bridge or Culvert Identifier
 B20 / C20 Town Bridge or Culvert Identifier

Vermont State Plane Coordinate System
 North American Datum of 1983
 SPCS_Zone_Identifier: 4400
 Geodetic Reference System 80
 5,000-meter grid, Easting - Northing



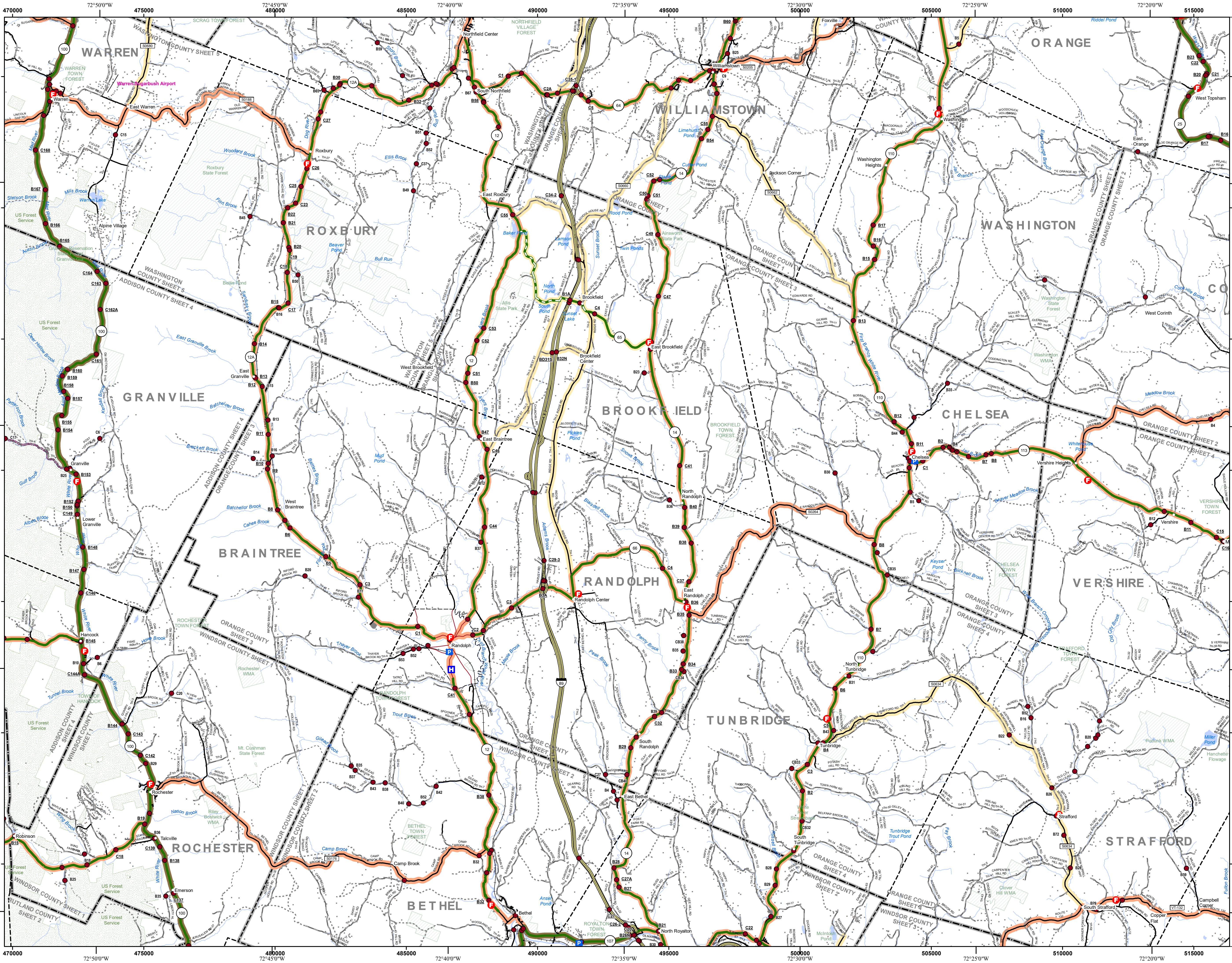
VERMONT COUNTY - TOWN MAP SERIES
ORANGE COUNTY
SHEET 2 OF 4

Prepared by the
 Vermont Agency of Transportation
 Mapping Section
 in cooperation with
 U.S. Department of Transportation
 Federal Highway Administration
 June 2022



Contact information: Vermont Agency of Transportation
 Division of Policy, Planning and Intermodal Development, Mapping Section
 1 National Life Drive, Montpelier, VT 05633-5001
 Telephone: 802-828-2600

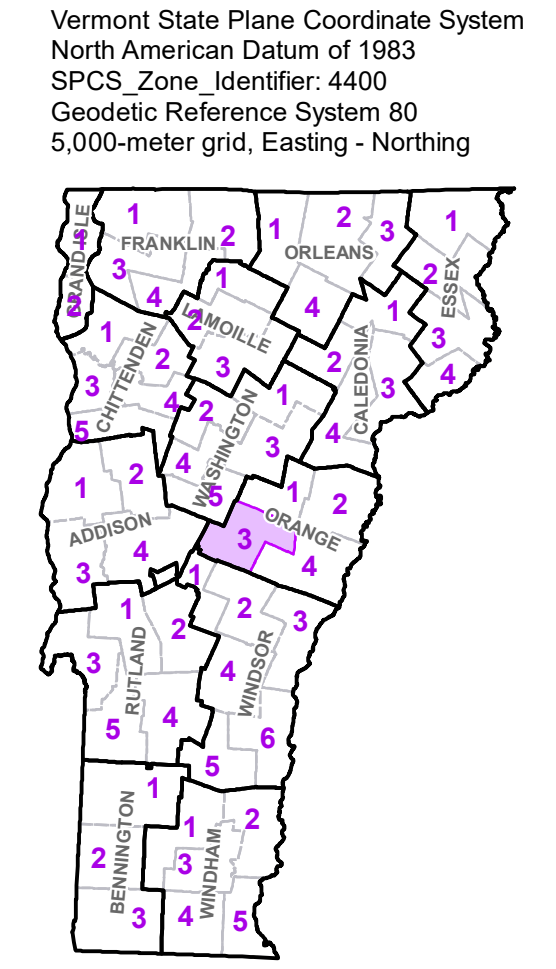
This map was funded in part through grants from the Federal Highway Administration, U.S. Department of Transportation. The representation of the authors expressed herein do not necessarily state or reflect those of the U.S. Department of Transportation.



TOWN	
Bare	
Bethel	
Braintree	
Brookfield	
Chelsea	
Chittenden	
Corinth	
Granville	
Hancock	
Northfield	
Orange	
Pittsfield	
Randolph	
Randolph U.C.	
Rochester	
Roxbury	
Royalton	
Sharon	
Stockbridge	
Stratford	
Thetford	
Topsham	
Tunbridge	
Vershire	
Waitsfield	
Warren	
Washington	
Williamstown	

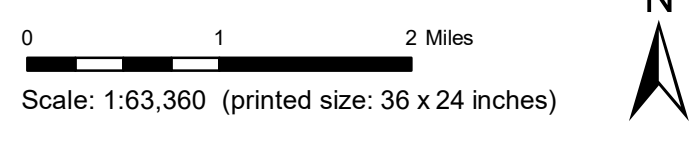
- Interstate
- U.S. Route
- Vermont Route
- Town Highway
- Interstate
- US Route Divided
- US Route
- State Route Paved
- State Route Unpaved
- Town Highway Paved
- Town Highway Unpaved
- Unimproved or Impassible
- Discontinued Highway
- Town Legal Trail
- Winter Road Closure
- Railroad
- Federal Aid Route
 - Principal Arterial
 - Minor Arterial
 - Major Collector
 - Minor Collector-not Federal Aid eligible
- VTrans Maintenance District Office
- Emergency Response Site
 - Fire Station
 - Law Enforcement
 - Hospital
 - Building
 - Localities
 - State Capital (Montpelier)
 - Bridge or Culvert
 - Water Body
 - Stream or Brook
 - Public Airport
 - State Boundary
 - County Boundary
 - Town Boundary
 - Village Boundary
 - Urban Compact Boundary
 - Public Land - State/Municipal
 - Green Mountain National Forest
 - County Subtile

B20 / C20 State Bridge or Culvert Identifier
 B20 / C20 Town Bridge or Culvert Identifier



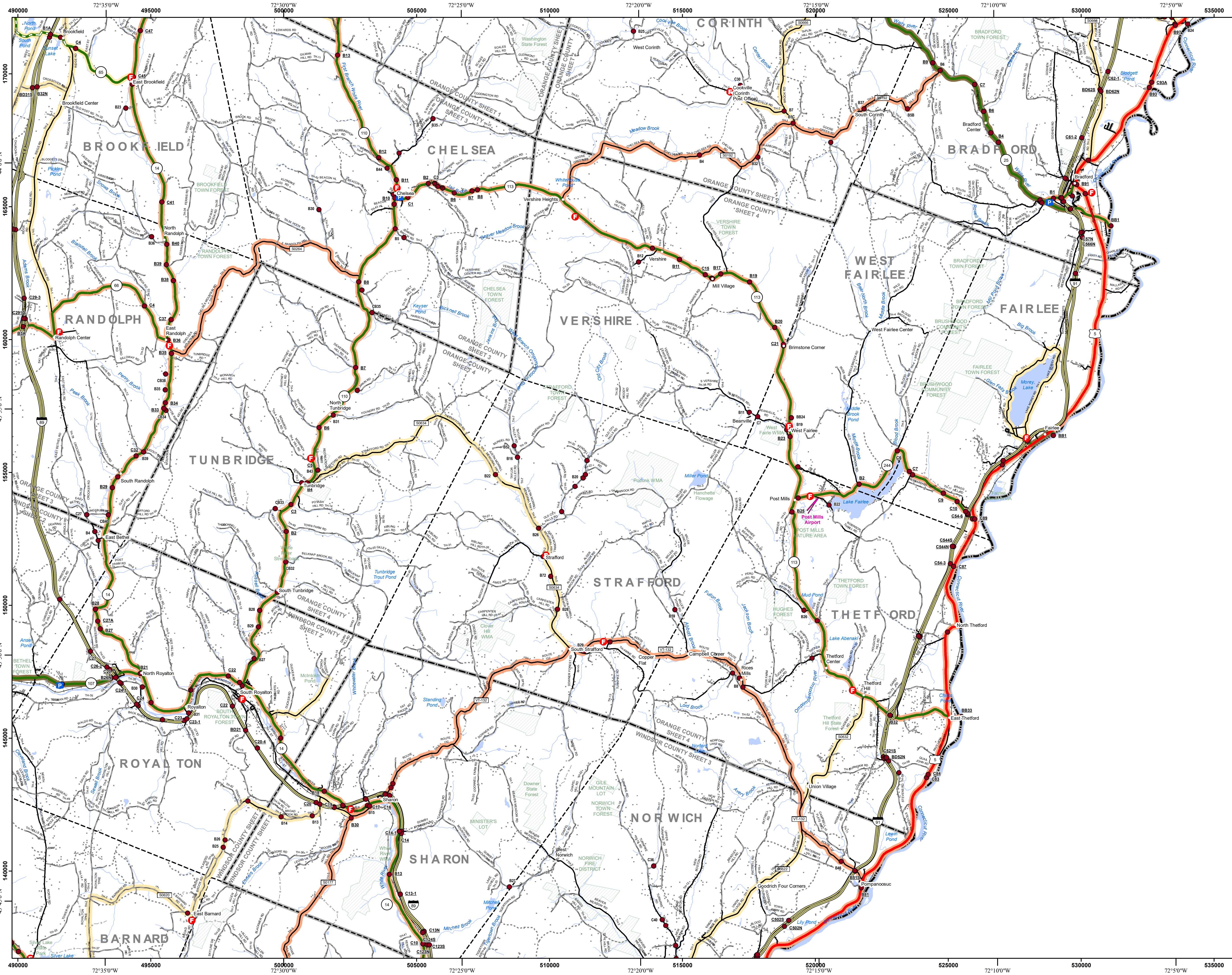
VERMONT COUNTY - TOWN MAP SERIES
ORANGE COUNTY
SHEET 3 OF 4

Prepared by the
 Vermont Agency of Transportation
 Mapping Section
 in cooperation with
 U.S. Department of Transportation
 Federal Highway Administration
 June 2022



Contact information: Vermont Agency of Transportation
 Division of Policy, Planning and Intermodal Development, Mapping Section
 National Life Drive, Montpelier, VT 05633-5001
 telephone: 802-828-2600

This map was funded in part through grants from the Federal Highway Administration, U.S. Department of Transportation. The representation of the authors expressed herein do not necessarily state or reflect those of the U.S. Department of Transportation.

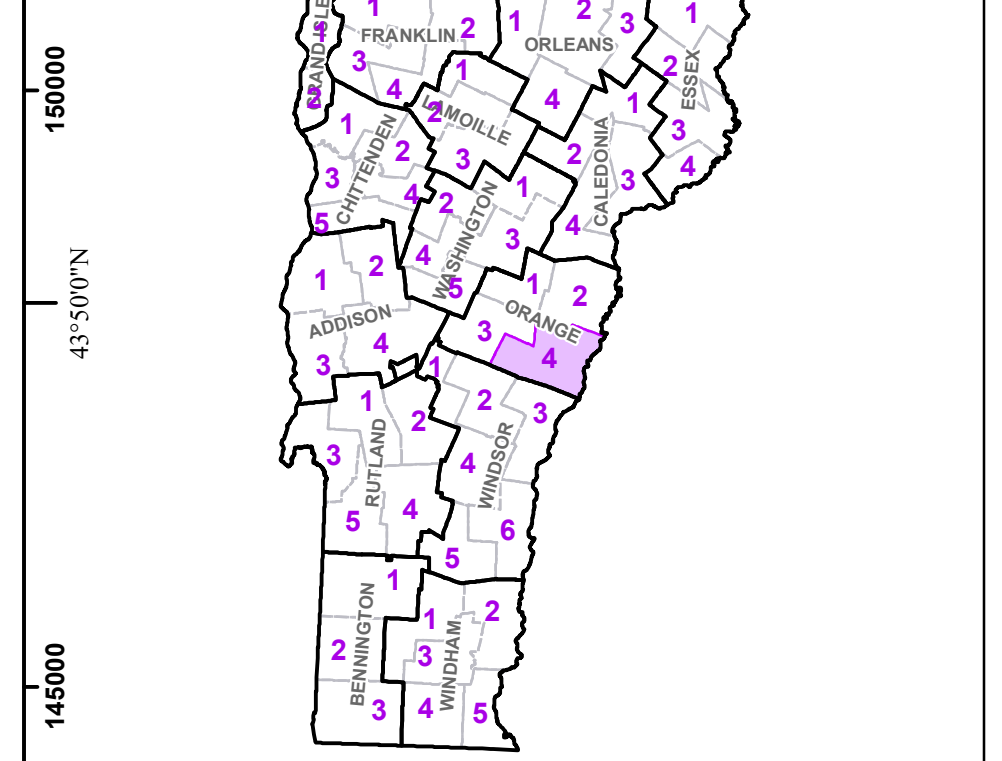


- Interstate
 - U.S. Route
 - Vermont Route
 - Town Highway
 - Interstate
 - US Route Divided
 - US Route
 - State Route Paved
 - State Route Unpaved
 - Town Highway Paved
 - Town Highway Unpaved
 - Unimproved or Impassible
 - Discontinued Highway
 - Town Legal Trail
 - Winter Road Closure
 - Railroad
- Federal Aid Route**
- Principal Arterial
 - Minor Arterial
 - Major Collector
 - Minor Collector-not Federal Aid eligible
- Emergency Response Site**
- Fire Station
 - Law Enforcement
 - Hospital
 - Building
 - Localities
 - State Capital (Montpelier)
 - Bridge or Culvert
 - Water Body
 - Stream or Brook
 - Public Airport
 - State Boundary
 - County Boundary
 - Town Boundary
 - Village Boundary
 - Urban Compact Boundary
 - Public Land - State/Municipal
 - Green Mountain National Forest
 - County Subtle

TOWN
Barnard
Bethel
Bradford
Brookfield
Chelsea
Corinth
Fairlee
Newbury
Norwich
Pomfret
Randolph
Royalton
Sharon
Stratford
Thetford
Tunbridge
Vershire
Washington
West Fairlee

B20 / C20 State Bridge or Culvert Identifier
 B20 / C20 Town Bridge or Culvert Identifier

Vermont State Plane Coordinate System
 North American Datum of 1983
 SPCS Zone Identifier: 4400
 Geodetic Reference System 80
 5,000-meter grid, Easting - Northing



VERMONT COUNTY - TOWN MAP SERIES
ORANGE COUNTY
SHEET 4 OF 4

Prepared by the
Vermont Agency of Transportation
 Mapping Section
 in cooperation with
U.S. Department of Transportation
 Federal Highway Administration
 June 2022

Scale: 1:63,360 (printed size: 36 x 24 inches)

Contact information: Vermont Agency of Transportation
 Division of Policy, Planning and Intermodal Development, Mapping Section
 1 National Life Drive, Montpelier, VT 05633-5001
 Telephone: 802-828-2600
 This map was funded in part through grants from the Federal Highway Administration, U.S. Department of Transportation. The representation of the authors expressed herein do not necessarily state or reflect those of the U.S. Department of Transportation.