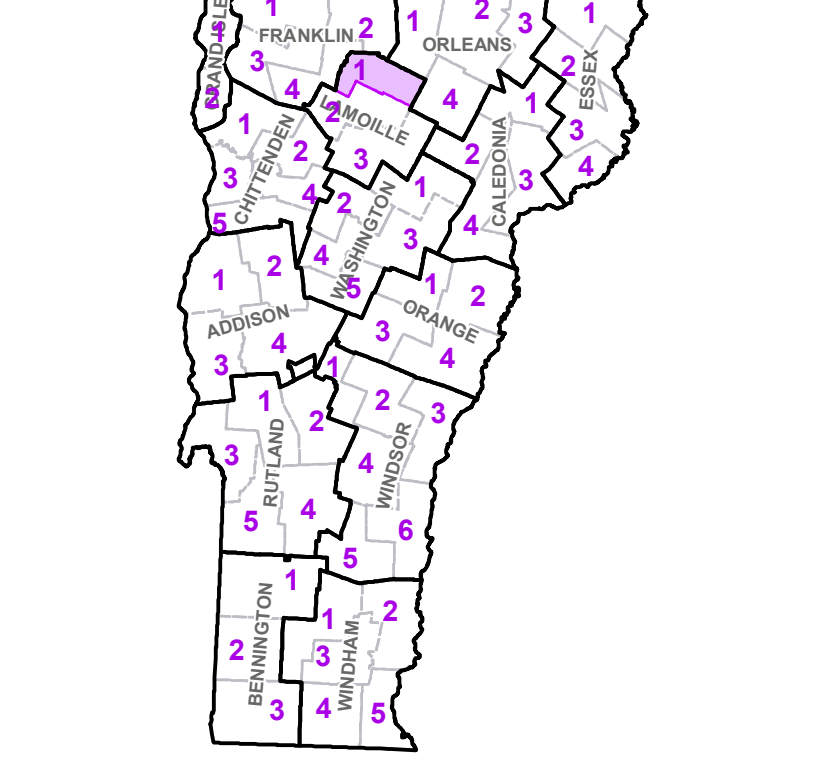


- Interstate
- U.S. Route
- Vermont Route
- Town Highway
- Interstate
- US Route Divided
- US Route
- State Route Paved
- State Route Unpaved
- Town Highway Paved
- Town Highway Unpaved
- Unimproved or Impassible
- Discontinued Highway
- Town Legal Trail
- Winter Road Closure
- Railroad
- Federal Aid Route
 - Principal Arterial
 - Minor Arterial
 - Major Collector
 - Minor Collector-not Federal Aid eligible
- VTrans Maintenance District Office
- Emergency Response Site
 - Fire Station
 - Law Enforcement
 - Hospital
 - Building
 - Localities
 - State Capital (Montpelier)
 - Bridge or Culvert
 - Water Body
 - Stream or Brook
 - Public Airport
- State Boundary
- County Boundary
- Town Boundary
- Village Boundary
- Urban Compact Boundary
- Public Land - State/Municipal
- Green Mountain National Forest
- County Subtile

TOWN	
Albany	
Albany Village	
Bakersfield	
Belvidere	
Cambridge	
Cambridge Village	
Craftsbury	
Eden	
Enosburgh	
Fairfield	
Fletcher	
Glover	
Greensboro	
Hardwick	
Hyde Park	
Hyde Park Village	
Irasburg	
Jeffersonville Village	
Johnson	
Johnson Village	
Lowell	
Montgomery	
Morrisown	
Morrisville Village	
Newport	
Sheldon	
Troy	
Underhill	
Waterville	
Westfield	
Wolcott	

B20 / C20 State Bridge or Culvert Identifier
B20 / C20 Town Bridge or Culvert Identifier

Vermont State Plane Coordinate System
 North American Datum of 1983
 SPCS Zone Identifier: 4400
 Geodetic Reference System 80
 5,000-meter grid, Easting - Northing



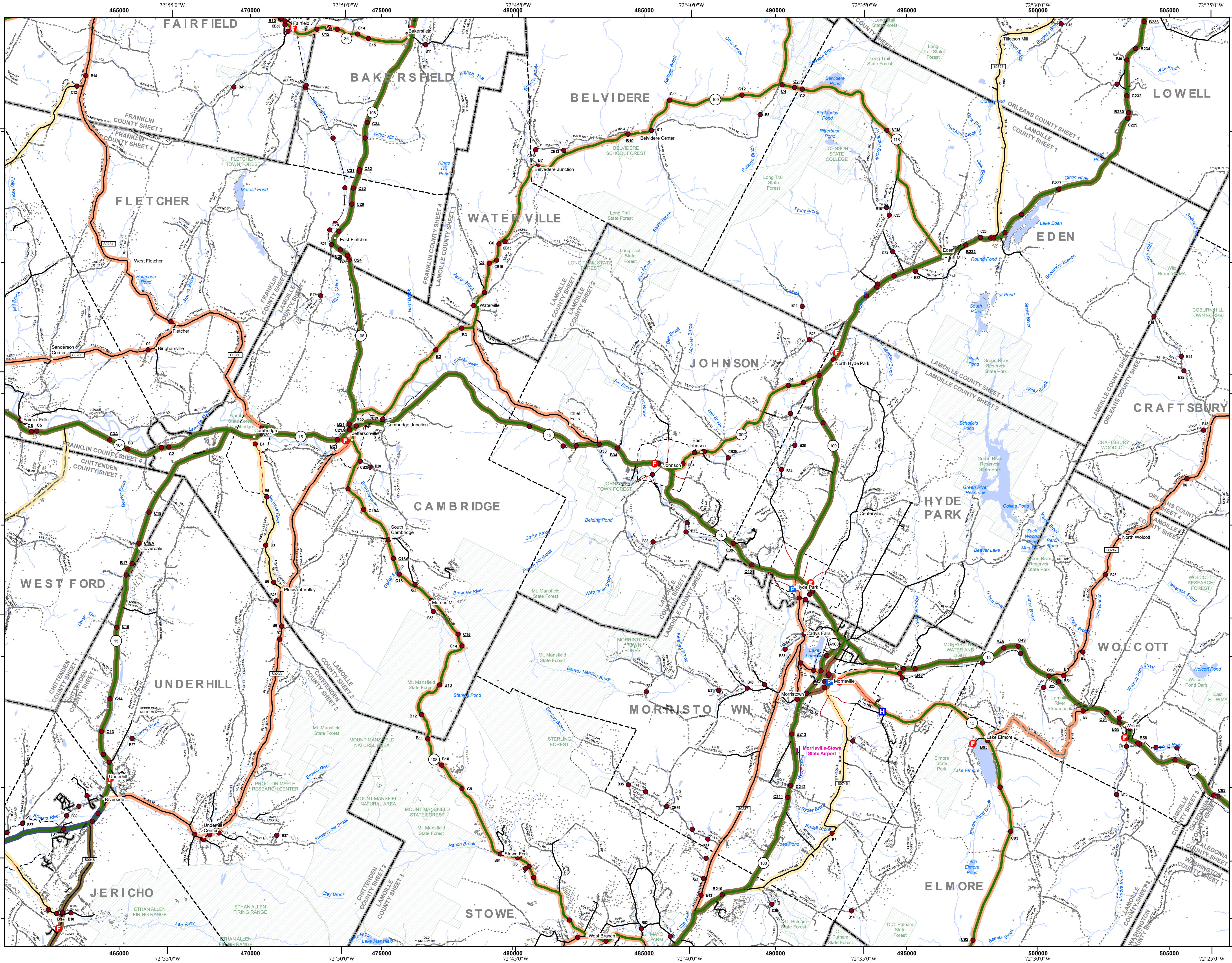
VERMONT COUNTY - TOWN MAP SERIES
LAMOILLE COUNTY
SHEET 1 OF 3

Prepared by the
 Vermont Agency of Transportation
 Mapping Section
 in cooperation with
 U.S. Department of Transportation
 Federal Highway Administration
 June 2022

Scale: 1:63,360 (printed size: 36 x 24 inches)

Contact information: Vermont Agency of Transportation
 Division of Policy, Planning and Intermodal Development, Mapping Section
 1 National Life Drive, Montpelier, VT 05633-5001
 Telephone: 802-828-2600

This map was funded in part through grants from the Federal Highway Administration, U.S. Department of Transportation. The representation of the authors expressed herein do not necessarily state or reflect those of the U.S. Department of Transportation.

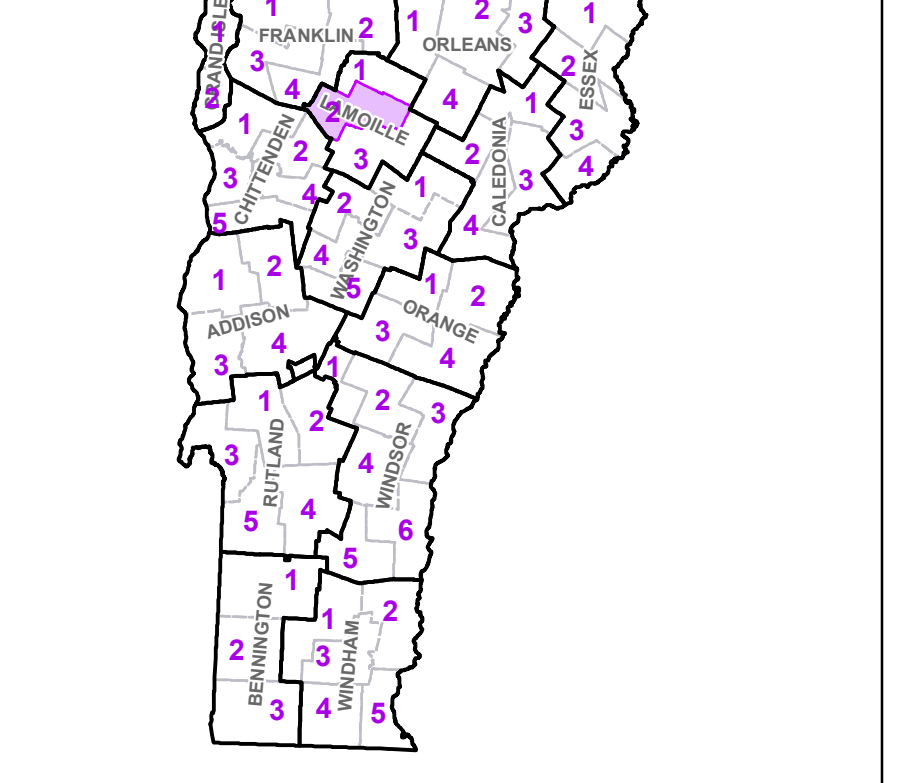


	Interstate
	U.S. Route
	Vermont Route
	Town Highway
	Interstate
	US Route Divided
	US Route
	State Route Paved
	State Route Unpaved
	Town Highway Paved
	Town Highway Unpaved
	Unimproved or Impassible
	Discontinued Highway
	Town Legal Trail
	Winter Road Closure
	Railroad
	Federal Aid Route Principal Arterial
	Federal Aid Route Minor Arterial
	Federal Aid Route Major Collector
	Federal Aid Route Minor Collector-not Federal Aid eligible
	VTrans Maintenance District Office
	Emergency Response Site Fire Station
	Emergency Response Site Law Enforcement
	Emergency Response Site Hospital
	Emergency Response Site Building
	Emergency Response Site Localities
	State Capital (Montpelier)
	Bridge or Culvert
	Water Body
	Stream or Brook
	Public Airport
	State Boundary
	County Boundary
	Town Boundary
	Village Boundary
	Urban Compact Boundary
	Public Land - State/Municipal
	Green Mountain National Forest
	County Subtle

TOWN
Albany
Bakersfield
Belvidere
Bolton
Cambridge
Cambridge Village
Craftsbury
Eden
Elmore
Essex
Fairfax
Fairfield
Fletcher
Hardwick
Hyde Park
Hyde Park Village
Jeffersonville Village
Jericho
Jericho Village
Johnson
Johnson Village
Lowell
Montgomery
Morrisville
Morrisville Village
Stowe
Underhill
Waterville
Westford
Wolcott
Woodbury
Worcester

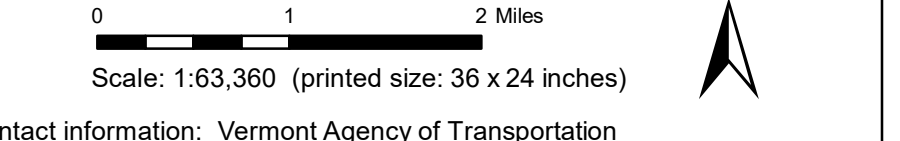
B20 / C20 State Bridge or Culvert Identifier
 B20 / C20 Town Bridge or Culvert Identifier

Vermont State Plane Coordinate System
 North American Datum of 1983
 SPCS Zone Identifier: 4400
 Geodetic Reference System 80
 5,000-meter grid, Easting - Northing



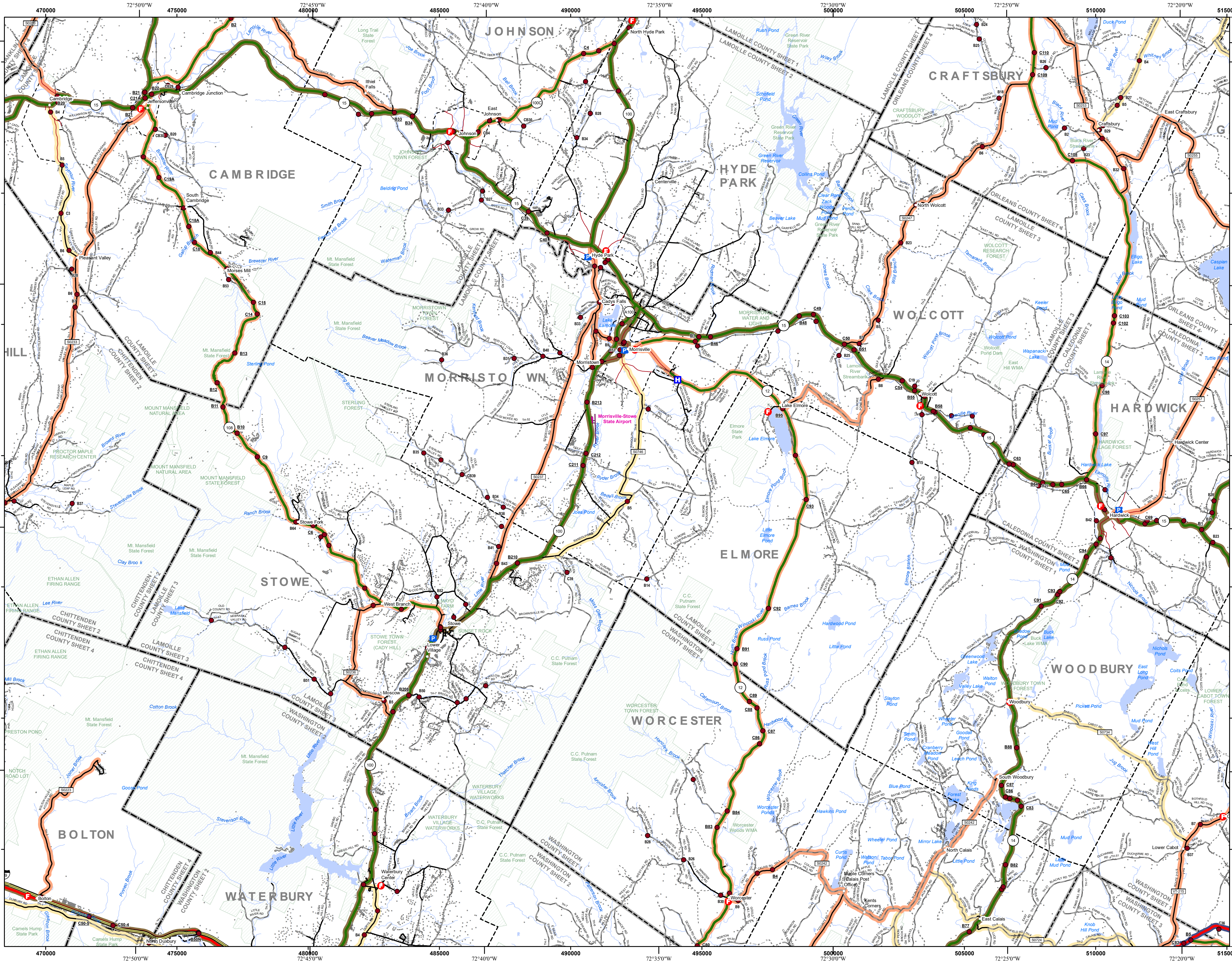
VERMONT COUNTY - TOWN MAP SERIES
LAMOILLE COUNTY SHEET 2 OF 3

Prepared by the
Vermont Agency of Transportation Mapping Section
 in cooperation with
U.S. Department of Transportation Federal Highway Administration
 June 2022



Contact information: Vermont Agency of Transportation
 Division of Policy, Planning and Intermodal Development, Mapping Section
 National Life Drive, Montpelier, VT 05633-5001
 Telephone: 802-828-2600

This map was funded in part through grants from the Federal Highway Administration, U.S. Department of Transportation. The representation of the authors expressed herein do not necessarily state or reflect those of the U.S. Department of Transportation.

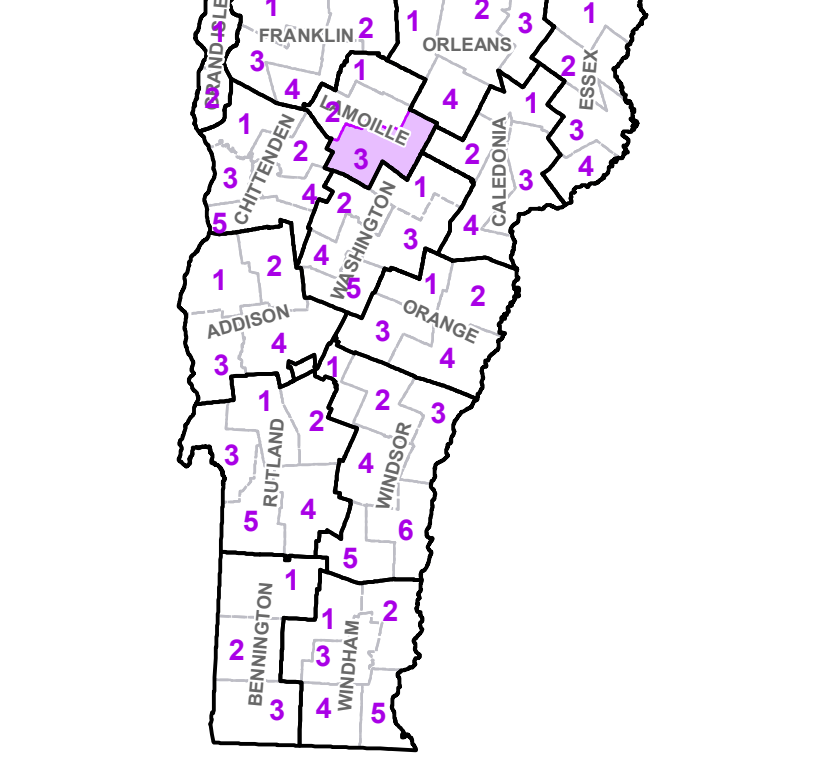


- Interstate
- U.S. Route
- Vermont Route
- Town Highway
- Interstate
- US Route Divided
- US Route
- State Route Paved
- State Route Unpaved
- Town Highway Paved
- Town Highway Unpaved
- Unimproved or Impassible
- Discontinued Highway
- Town Legal Trail
- Winter Road Closure
- Railroad
- Federal Aid Route
 - Principal Arterial
 - Minor Arterial
 - Major Collector
 - Minor Collector-not Federal Aid eligible
- VTrans Maintenance District Office
- Emergency Response Site
 - Fire Station
 - Law Enforcement
 - Hospital
 - Building
 - Localities
 - State Capital (Montpelier)
 - Bridge or Culvert
 - Water Body
 - Stream or Brook
 - Public Airport
- State Boundary
- County Boundary
- Town Boundary
- Village Boundary
- Urban Compact Boundary
- Public Land - State/Municipal
- Green Mountain National Forest
- County Subtile

TOWN
Albany
Bolton
Cabot
Catalis
Cambridge
Cambridge Village
Craftsbury
Duxbury
Eden
Elmore
Fletcher
Glover
Greensboro
Hardwick
Hardwick U.C.
Hyde Park
Hyde Park Village
Jeffersonville Village
Jericho
Johnson
Johnson Village
Marshallfield
Middlesex
Morristown
Morrisville Village
Stowe
Underhill
Walden
Waterbury
Waterville
Wolcott
Woodbury
Worcester

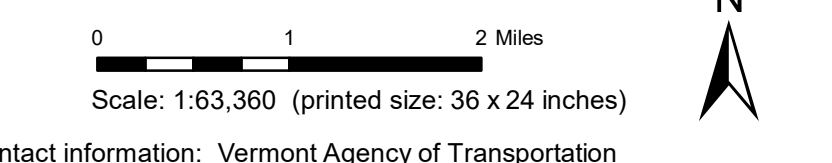
B20 / C20 State Bridge or Culvert Identifier
 B20 / C20 Town Bridge or Culvert Identifier

Vermont State Plane Coordinate System
 North American Datum of 1983
 SPCS Zone Identifier: 4400
 Geodetic Reference System 80
 5,000-meter grid, Easting - Northing



VERMONT COUNTY - TOWN MAP SERIES
LAMOILLE COUNTY
SHEET 3 OF 3

Prepared by the
Vermont Agency of Transportation Mapping Section
 in cooperation with
U.S. Department of Transportation Federal Highway Administration
 June 2022



Contact information: Vermont Agency of Transportation
 Division of Policy, Planning and Intermodal Development, Mapping Section
 1 National Life Drive, Montpelier, VT 05633-5001
 Telephone: 802-828-2600
 This map was funded in part through grants from the Federal Highway Administration, U.S. Department of Transportation. The representation of the authors expressed herein do not necessarily state or reflect those of the U.S. Department of Transportation.