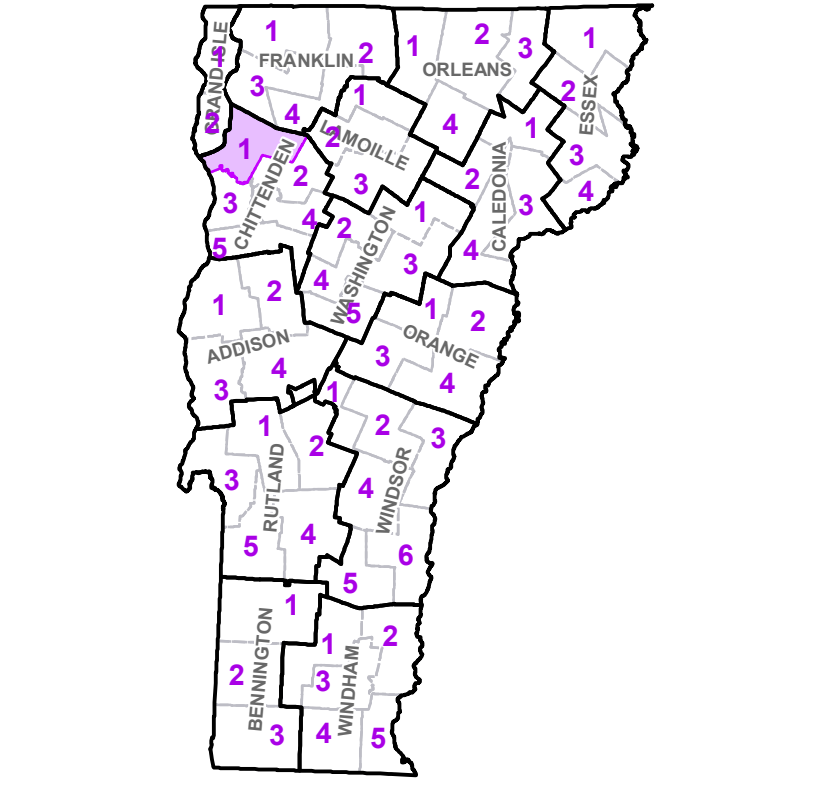


- Interstate
 - U.S. Route
 - Vermont Route
 - Town Highway
 - Interstate
 - US Route Divided
 - US Route
 - State Route Paved
 - State Route Unpaved
 - Town Highway Paved
 - Town Highway Unpaved
 - Unimproved or Impassible
 - Discontinued Highway
 - Town Legal Trail
 - Winter Road Closure
 - Railroad
- Federal Aid Route**
- Principal Arterial
 - Minor Arterial
 - Major Collector
 - Minor Collector-not Federal Aid eligible
 - VTrans Maintenance District Office
- Emergency Response Site**
- Fire Station
 - Law Enforcement
 - Hospital
 - Building
 - Localities
 - State Capital (Montpelier)
 - Bridge or Culvert
 - Water Body
 - Stream or Brook
 - Public Airport
 - State Boundary
 - County Boundary
 - Town Boundary
 - Village Boundary
 - Urban Compact Boundary
 - Public Land - State/Municipal
 - Green Mountain National Forest
 - County Subtile

| TOWN | |
|------------------------|--|
| Bakersfield | |
| Bolton | |
| Burlington City | |
| Cambridge | |
| Cambridge Village | |
| Colchester | |
| Essex | |
| Essex Center U.C. | |
| Essex Junction Village | |
| Fairfax | |
| Fairfield | |
| Fletcher | |
| Georgia | |
| Grand Isle | |
| Jericho | |
| Jericho Village | |
| Milton | |
| Milton U.C. | |
| North Hero | |
| Saint Albans | |
| Shelburne | |
| South Burlington City | |
| South Hero | |
| Underhill | |
| Westford | |
| Williston | |
| Winooksi City | |

B20 / C20 State Bridge or Culvert Identifier
B20 / C20 Town Bridge or Culvert Identifier

Vermont State Plane Coordinate System
 North American Datum of 1983
 SPCS Zone Identifier: 4400
 Geodetic Reference System 80
 5,000-meter grid, Easting - Northing

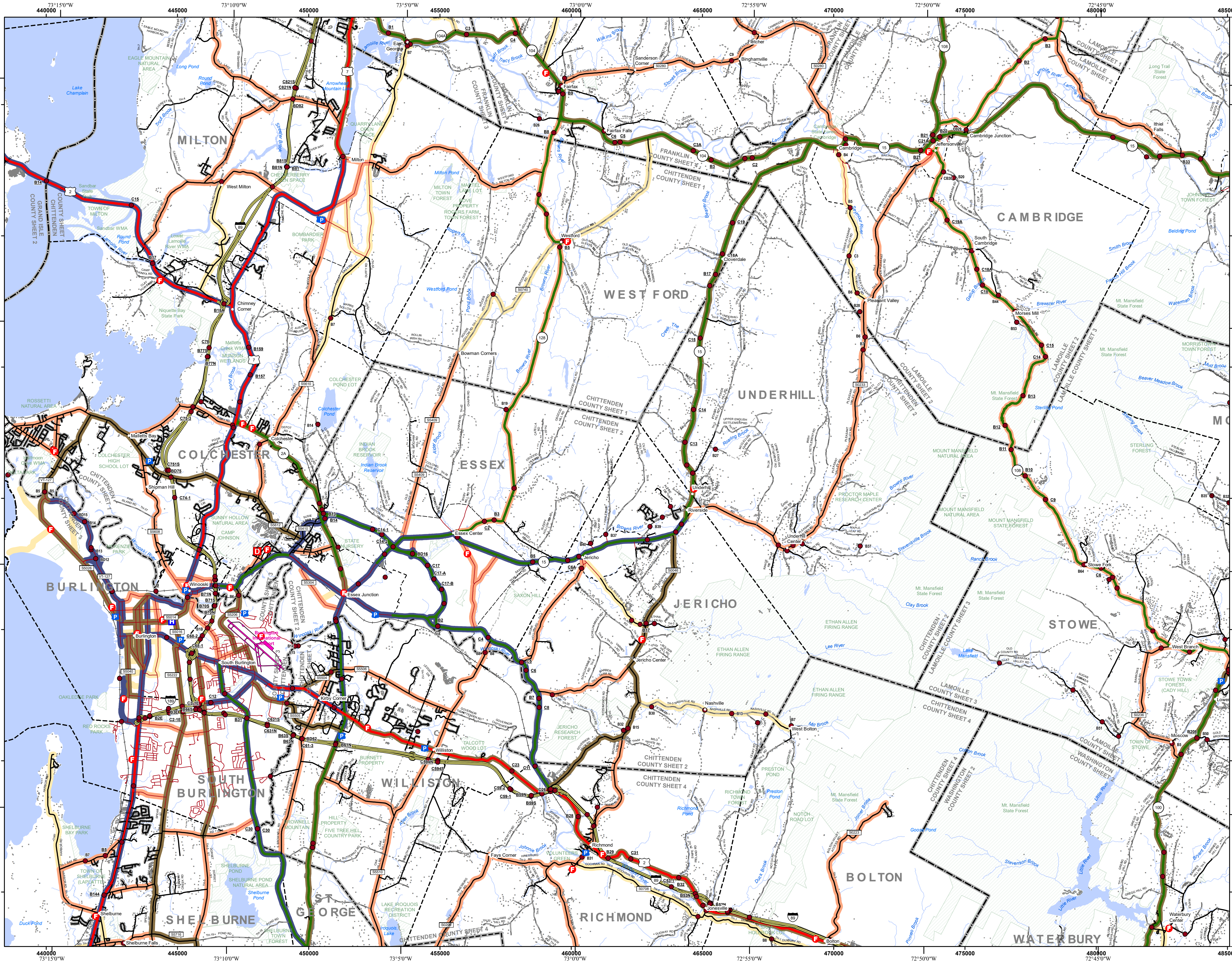


VERMONT COUNTY - TOWN MAP SERIES
CHITTENDEN COUNTY SHEET 1 OF 5

Prepared by the
Vermont Agency of Transportation Mapping Section
 in cooperation with
U.S. Department of Transportation Federal Highway Administration
 June 2022

Scale: 1:63,360 (printed size: 36 x 24 inches)

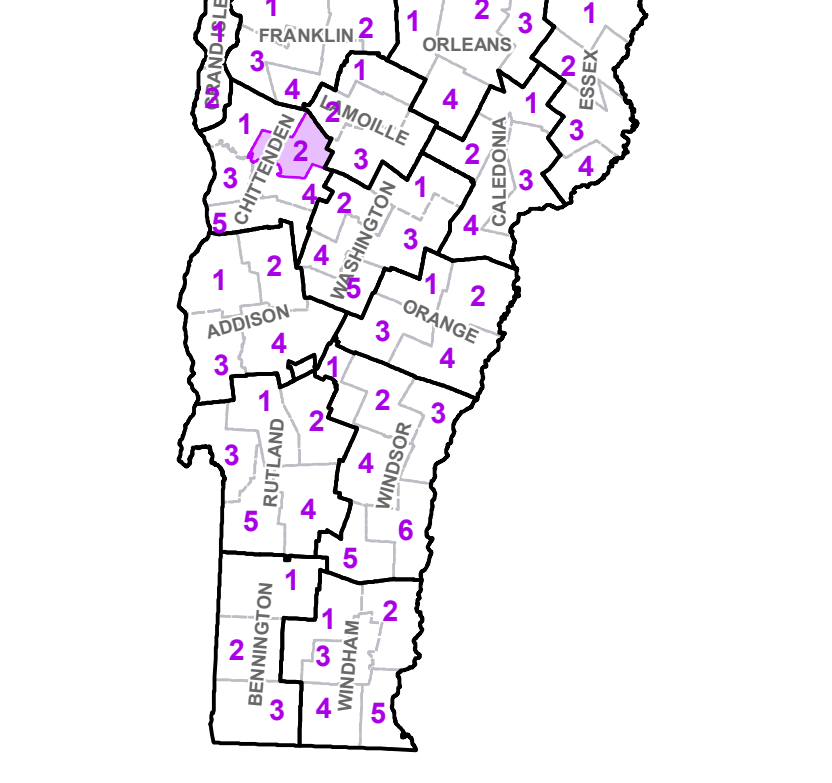
Contact information: Vermont Agency of Transportation
 Division of Policy, Planning and Intermodal Development, Mapping Section
 1 National Life Drive, Montpelier, VT 05633-5001
 Telephone: 802-828-2600
 This map was funded in part through grants from the Federal Highway Administration, U.S. Department of Transportation. The representation of the authors expressed herein do not necessarily state or reflect those of the U.S. Department of Transportation.



| TOWN | |
|------------------------|--|
| Bolton | |
| Burlington City | |
| Cambridge | |
| Cambridge Village | |
| Colchester | |
| Essex | |
| Essex Center U.C. | |
| Essex Junction Village | |
| Fairfax | |
| Fletcher | |
| Georgia | |
| Grand Isle | |
| Hinesburg | |
| Jeffersonville Village | |
| Jericho | |
| Jericho Village | |
| Johnson | |
| Johnson Village | |
| Milton | |
| Milton U.C. | |
| Morristown | |
| Richmond | |
| Saint George | |
| Shelburne | |
| South Burlington City | |
| South Hero | |
| Stowe | |
| Underhill | |
| Waterbury | |
| Waterbury Village | |
| Westford | |
| Williston | |
| Winooski City | |

B20 / C20 State Bridge or Culvert Identifier
B20 / C20 Town Bridge or Culvert Identifier

Vermont State Plane Coordinate System
 North American Datum of 1983
 SPCS Zone Identifier: 4400
 Geodetic Reference System 80
 5,000-meter grid, Easting - Northing



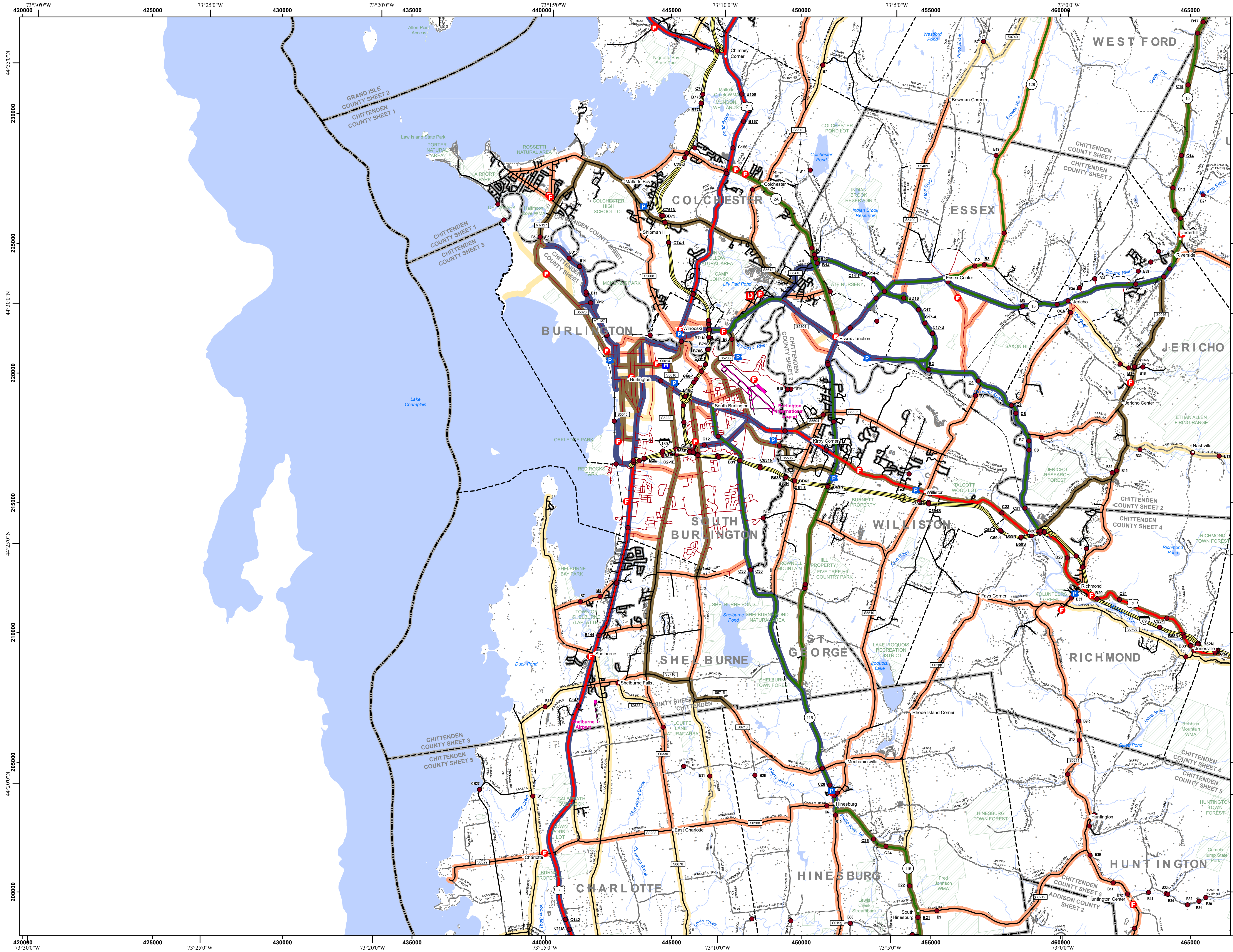
VERMONT COUNTY - TOWN MAP SERIES
CHITTENDEN COUNTY
SHEET 2 OF 5

Prepared by the
Vermont Agency of Transportation Mapping Section
 in cooperation with
U.S. Department of Transportation Federal Highway Administration
 June 2022

Scale: 1:63,360 (printed size: 36 x 24 inches)

Contact information: Vermont Agency of Transportation
 Division of Policy, Planning and Intermodal Development, Mapping Section
 1 National Life Drive, Montpelier, VT 05633-5001
 Telephone: 802-228-2600

This map was funded in part through grants from the Federal Highway Administration, U.S. Department of Transportation. The representation of the authors expressed herein do not necessarily state or reflect those of the U.S. Department of Transportation.

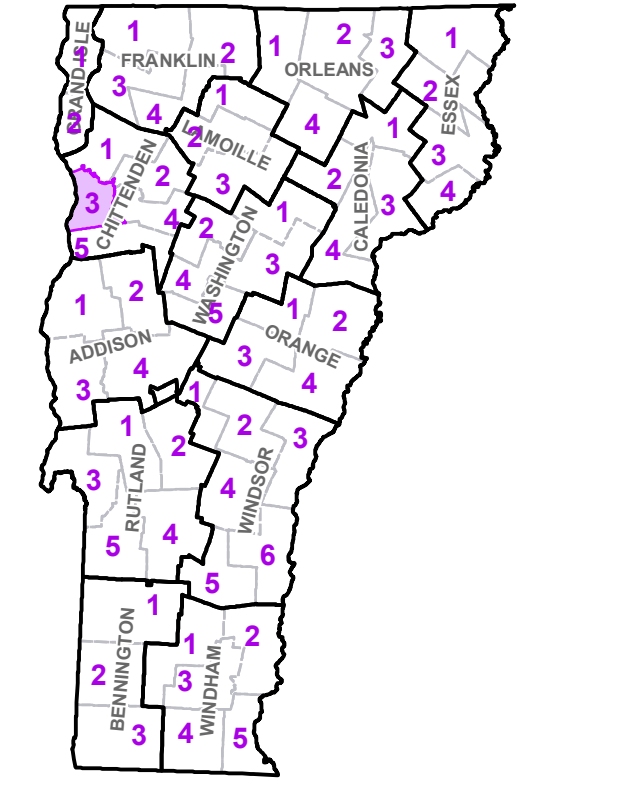


- Interstate
- U.S. Route
- Vermont Route
- Town Highway
- Interstate
- US Route Divided
- US Route
- State Route Paved
- State Route Unpaved
- Town Highway Paved
- Town Highway Unpaved
- Unimproved or Impassible
- Discontinued Highway
- Town Legal Trail
- Winter Road Closure
- Railroad
- Federal Aid Route**
- Principal Arterial
- Minor Arterial
- Major Collector
- Minor Collector-not Federal Aid eligible
- VTrans Maintenance District Office
- Emergency Response Site**
- Fire Station
- Law Enforcement
- Hospital
- Building
- Localities
- State Capital (Montpelier)
- Bridge or Culvert
- Water Body
- Stream or Brook
- Public Airport
- State Boundary
- County Boundary
- Town Boundary
- Village Boundary
- Urban Compact Boundary
- Public Land - State/Municipal
- Green Mountain National Forest
- County Subtile

| TOWN | |
|------------------------|--|
| Bolton | |
| Burlington City | |
| Charlotte | |
| Colchester | |
| Essex | |
| Essex Center U.C. | |
| Essex Junction Village | |
| Hinesburg | |
| Huntington | |
| Jericho | |
| Jericho Village | |
| Milton | |
| Richmond | |
| Saint George | |
| Saint Albans | |
| Shelburne | |
| South Burlington City | |
| South Hero | |
| Starksboro | |
| Underhill | |
| Westford | |
| Williston | |
| Winooski City | |

B20 / C20 State Bridge or Culvert Identifier
 B20 / C20 Town Bridge or Culvert Identifier

Vermont State Plane Coordinate System
 North American Datum of 1983
 SPCS_Zone_Identifier: 4400
 Geodetic Reference System 80
 5,000-meter grid, Easting - Northing



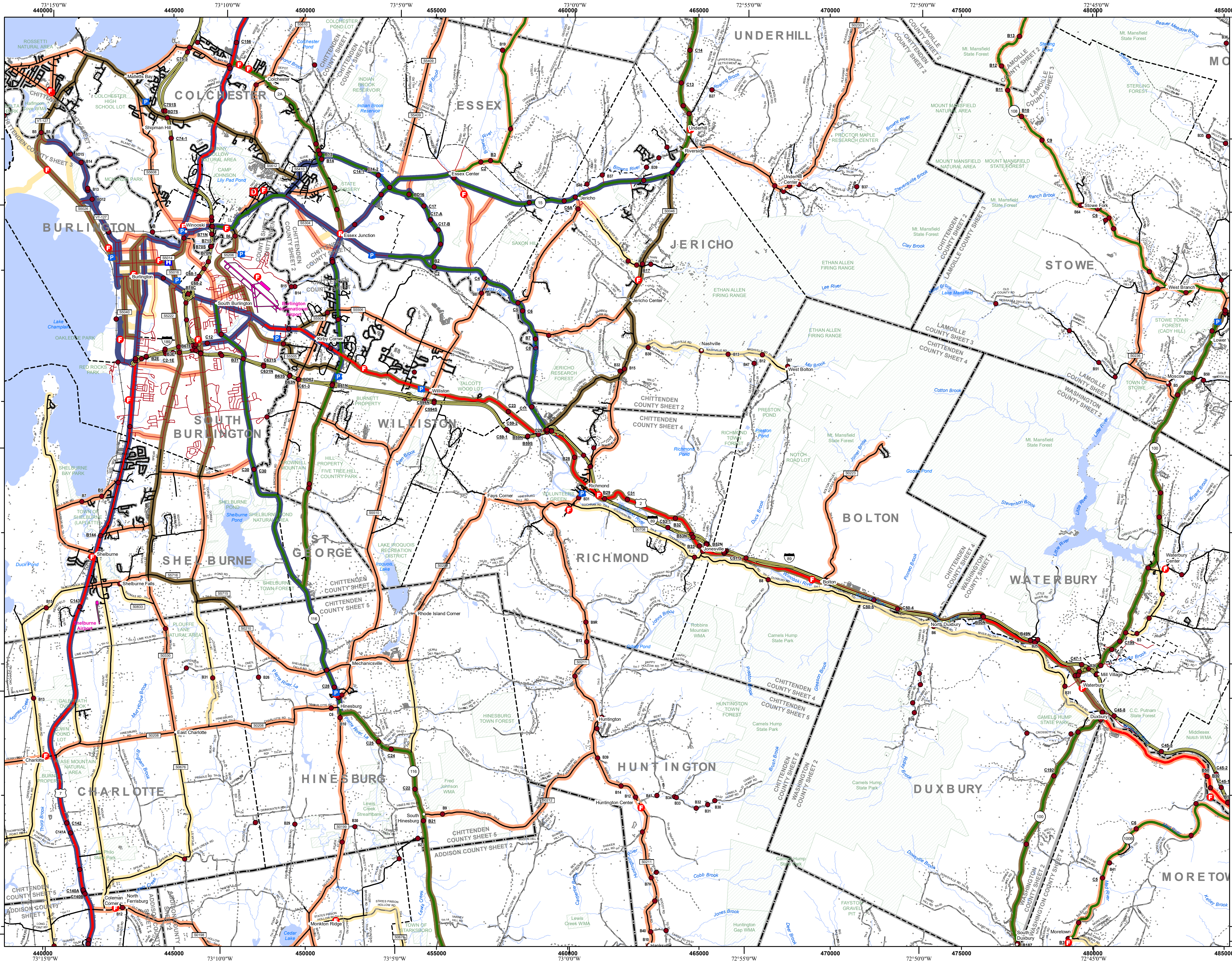
VERMONT COUNTY - TOWN MAP SERIES
CHITTENDEN COUNTY SHEET 3 OF 5

Prepared by the
Vermont Agency of Transportation Mapping Section
 in cooperation with
U.S. Department of Transportation Federal Highway Administration
 June 2022

0 1 2 Miles
 Scale: 1:63,360 (printed size: 36 x 24 inches)

Contact information: Vermont Agency of Transportation
 Division of Policy, Planning and Intermodal Development, Mapping Section
 1 National Life Drive, Montpelier, VT 05633-5001
 Telephone: 802-828-2600

This map was funded in part through grants from the Federal Highway Administration, U.S. Department of Transportation. The representation of the authors expressed herein do not necessarily state or reflect those of the U.S. Department of Transportation.

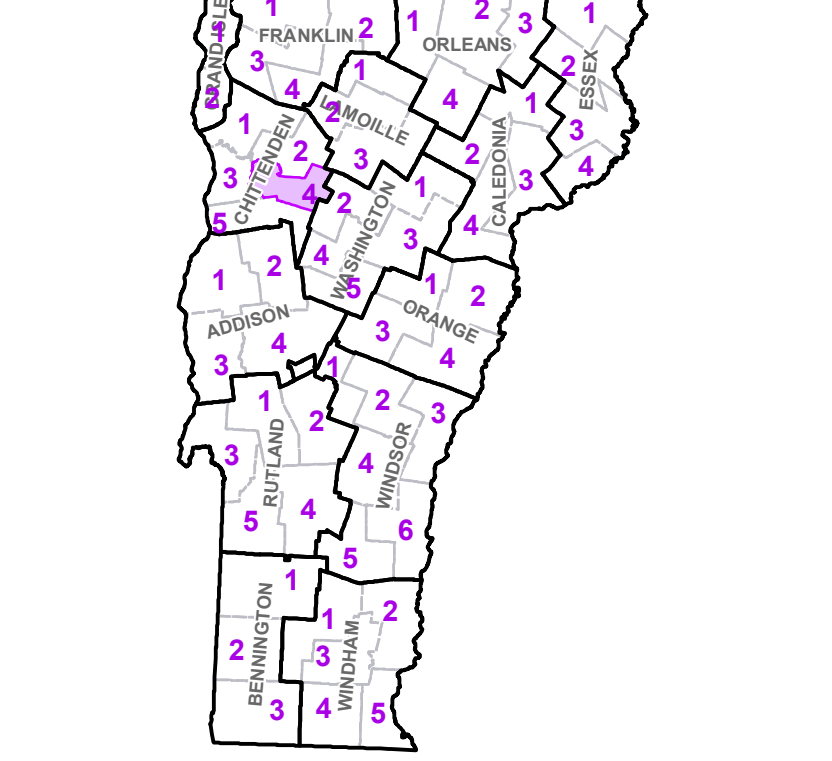


| TOWN | |
|------------------------|--|
| Bolton | |
| Burlington City | |
| Cambridge | |
| Charlotte | |
| Colchester | |
| Duxbury | |
| Essex | |
| Essex Center U.C. | |
| Essex Junction Village | |
| Fayston | |
| Ferrisburgh | |
| Hinesburg | |
| Huntington | |
| Jericho | |
| Jericho Village | |
| Middlesex | |
| Monkton | |
| Moretown | |
| Moretown | |
| Richmond | |
| Saint George | |
| Shelburne | |
| South Burlington City | |
| Starkboro | |
| Stowe | |
| Underhill | |
| Waterbury | |
| Waterbury | |
| Waterbury Village | |
| Westford | |
| Williston | |
| Winooski City | |

Emergency Response Site

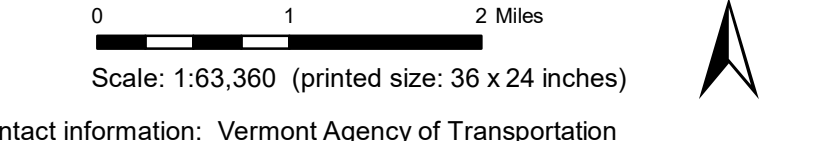
- Fire Station
- Law Enforcement
- Hospital
- Building
- Localities
- State Capital (Montpelier)
- Bridge or Culvert
- Water Body
- Stream or Brook
- Public Airport
- State Boundary
- County Boundary
- Town Boundary
- Village Boundary
- Urban Compact Boundary
- Public Land - State/Municipal
- Green Mountain National Forest
- County Subtile

Vermont State Plane Coordinate System
 North American Datum of 1983
 SPCS_Zone_Identifier: 4400
 Geodetic Reference System 80
 5,000-meter grid, Easting - Northing



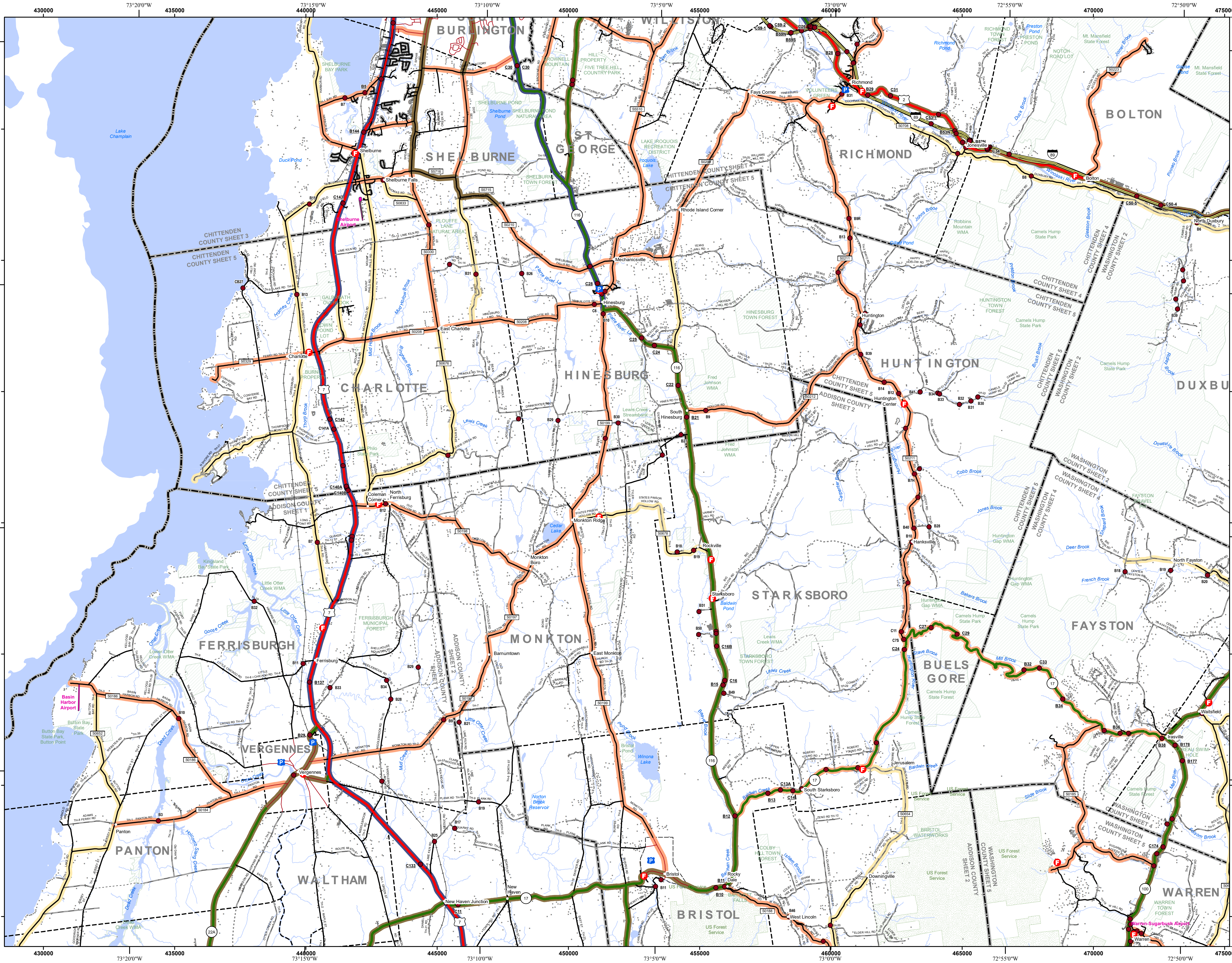
VERMONT COUNTY - TOWN MAP SERIES
CHITTENDEN COUNTY
SHEET 4 OF 5

Prepared by the
Vermont Agency of Transportation
 Mapping Section
 in cooperation with
U.S. Department of Transportation
 Federal Highway Administration
 June 2022



Contact information: Vermont Agency of Transportation
 Division of Policy, Planning and Intermodal Development, Mapping Section
 1 National Life Drive, Montpelier, VT 05633-5001
 Telephone: 802-828-2600

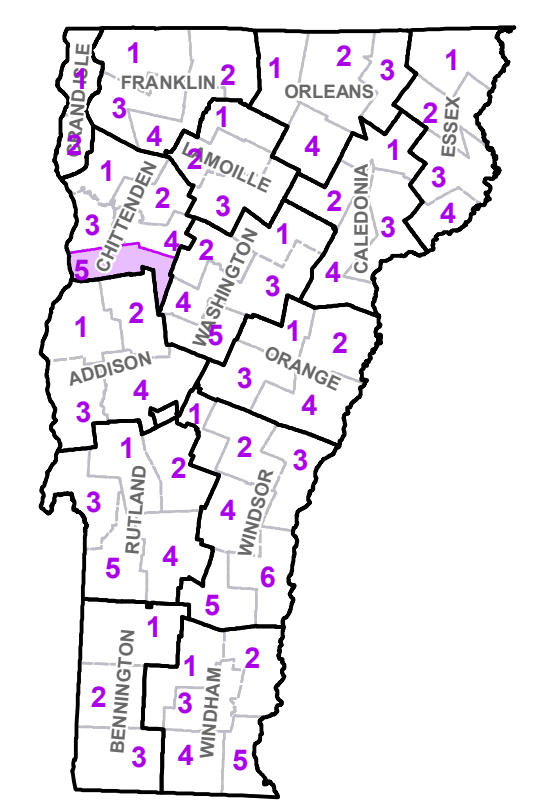
This map was funded in part through grants from the Federal Highway Administration, U.S. Department of Transportation. The representation of the authors expressed herein does not necessarily state or reflect those of the U.S. Department of Transportation.



| | |
|--|--|
| | Interstate |
| | U.S. Route |
| | Vermont Route |
| | Town Highway |
| | Interstate |
| | US Route Divided |
| | US Route |
| | State Route Paved |
| | State Route Unpaved |
| | Town Highway Paved |
| | Town Highway Unpaved |
| | Unimproved or Impassible |
| | Discontinued Highway |
| | Town Legal Trail |
| | Winter Road Closure |
| | Railroad |
| | Federal Aid Route Principal Arterial |
| | Minor Arterial |
| | Major Collector |
| | Minor Collector-not Federal Aid eligible |
| | VTrans Maintenance District Office |
| | Emergency Response Site Fire Station |
| | Law Enforcement |
| | Hospital |
| | Building |
| | Localities |
| | State Capital (Montpelier) |
| | Bridge or Culvert |
| | Water Body |
| | Stream or Brook |
| | Public Airport |
| | State Boundary |
| | County Boundary |
| | Town Boundary |
| | Village Boundary |
| | Urban Compact Boundary |
| | Public Land - State/Municipal |
| | Green Mountain National Forest |
| | County Subtile |

| TOWN |
|-----------------------|
| Addison |
| Bolton |
| Bristol |
| Bristol U.C. |
| Buells Gore |
| Charlotte |
| Duxbury |
| Fayston |
| Ferrisburgh |
| Hinesburg |
| Huntington |
| Lincoln |
| Monkton |
| New Haven |
| Panton |
| Richmond |
| Saint George |
| Shelburne |
| South Burlington City |
| Starksboro |
| Vergennes City |
| Waitsfield |
| Waltham |
| Warren |
| Waterbury |
| Williston |

Vermont State Plane Coordinate System
 North American Datum of 1983
 SPCS Zone Identifier: 4400
 Geodetic Reference System 80
 5,000-meter grid, Easting - Northing



VERMONT COUNTY - TOWN MAP SERIES
CHITTENDEN COUNTY
SHEET 5 OF 5

Prepared by the
Vermont Agency of Transportation
 Mapping Section
 in cooperation with
U.S. Department of Transportation
 Federal Highway Administration
 June 2022



Contact information: Vermont Agency of Transportation
 Division of Policy, Planning and Intermodal Development, Mapping Section
 National Life Drive, Montpelier, VT 05633-5001
 Telephone: 802-228-2600

This map was funded in part through grants from the Federal Highway Administration, U.S. Department of Transportation. The representation of the authors expressed herein do not necessarily state or reflect those of the U.S. Department of Transportation.