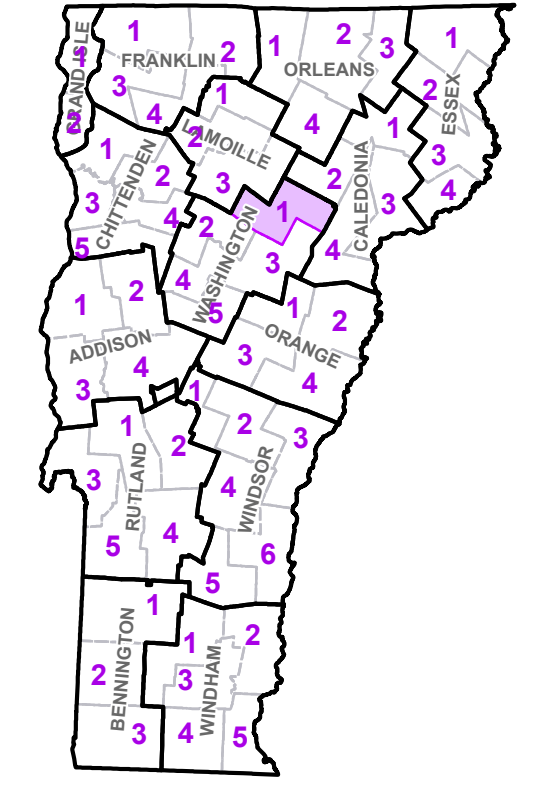


| | |
|--|--|
| | Interstate |
| | U.S. Route |
| | Vermont Route |
| | Town Highway |
| | Interstate |
| | US Route Divided |
| | US Route |
| | State Route Paved |
| | State Route Unpaved |
| | Town Highway Paved |
| | Town Highway Unpaved |
| | Unimproved or Impassible |
| | Discontinued Highway |
| | Town Legal Trail |
| | Winter Road Closure |
| | Railroad |
| | Federal Aid Route |
| | Principal Arterial |
| | Minor Arterial |
| | Major Collector |
| | Minor Collector-not Federal Aid eligible |
| | VTrans Maintenance District Office |
| | Emergency Response Site |
| | Fire Station |
| | Law Enforcement |
| | Hospital |
| | Building |
| | Localities |
| | State Capital (Montpelier) |
| | Bridge or Culvert |
| | Water Body |
| | Stream or Brook |
| | Public Airport |
| | State Boundary |
| | County Boundary |
| | Town Boundary |
| | Village Boundary |
| | Urban Compact Boundary |
| | Public Land - State/Municipal |
| | Green Mountain National Forest |
| | County Subtle |

| TOWN | |
|---------------------|--|
| Barnet | |
| Berlin | |
| Cabot | |
| Calais | |
| Danville | |
| East Montpelier | |
| Elmore | |
| Greensboro | |
| Groton | |
| Hardwick | |
| Hardwick U.C. | |
| Marshfield | |
| Marshfield Village | |
| Middlesex | |
| Montpelier City | |
| Moretown | |
| Morrisville | |
| Morrisville Village | |
| Peacham | |
| Plainfield | |
| Ryegate | |
| Stannard | |
| Stowe | |
| Walden | |
| Waterbury | |
| Waterbury Village | |
| Wheelock | |
| Wolcott | |
| Worcester | |

B20 / C20 State Bridge or Culvert Identifier
 B20 / C20 Town Bridge or Culvert Identifier

Vermont State Plane Coordinate System
 North American Datum of 1983
 SPCS Zone Identifier: 4400
 Geodetic Reference System 80
 5,000-meter grid, Easting - Northing

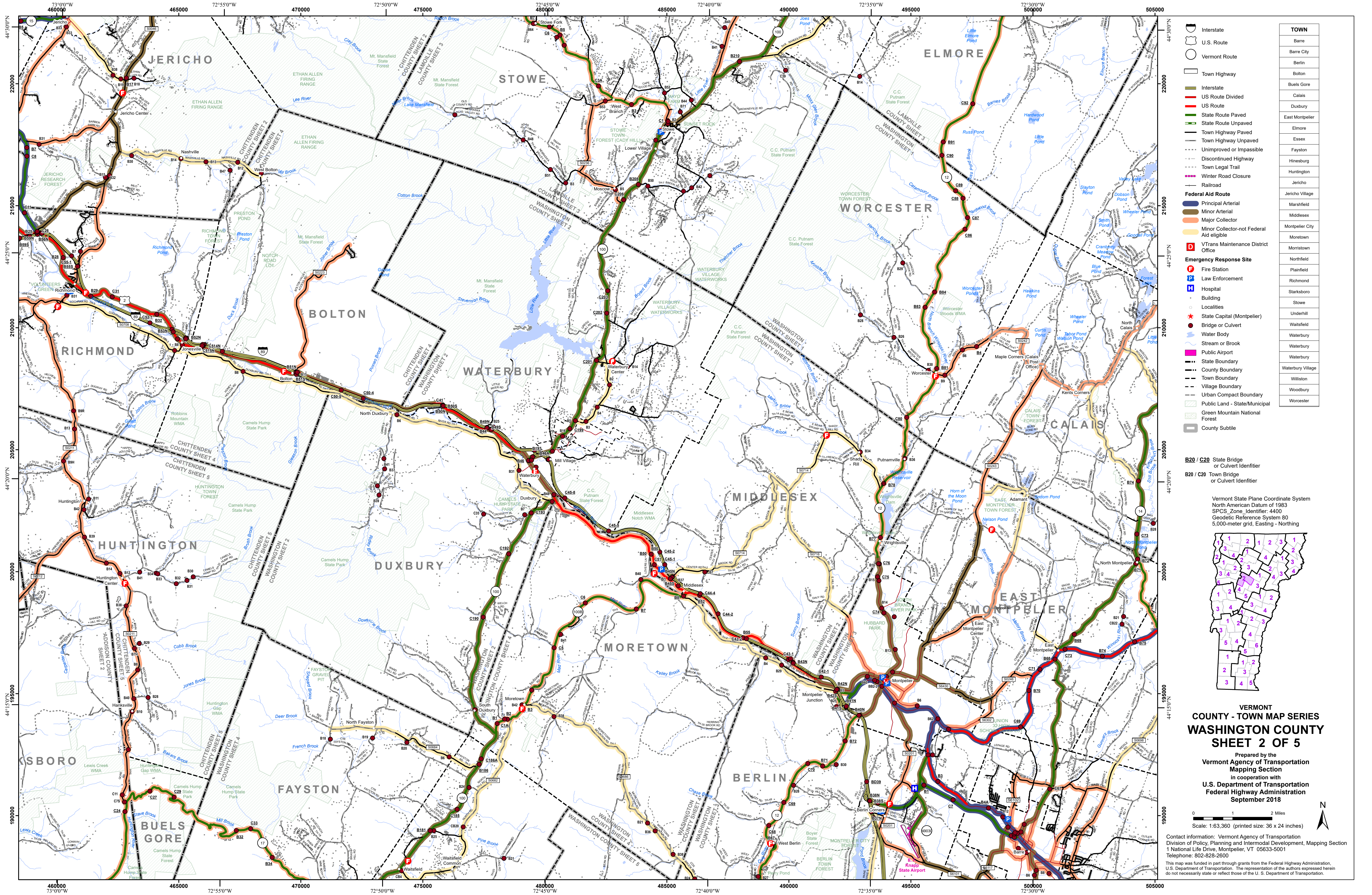


VERMONT COUNTY - TOWN MAP SERIES
WASHINGTON COUNTY
SHEET 1 OF 5

Prepared by the
 Vermont Agency of Transportation
 Mapping Section
 in cooperation with
 U.S. Department of Transportation
 Federal Highway Administration
 September 2018

Scale: 1:63,360 (printed size: 36 x 24 inches)

Contact information: Vermont Agency of Transportation
 Division of Policy, Planning and Intermodal Development, Mapping Section
 National Life Drive, Montpelier, VT 05633-5001
 Telephone: 802-828-2600
 This map was funded in part through grants from the Federal Highway Administration, U.S. Department of Transportation. The representation of the authors expressed herein does not necessarily state or reflect those of the U.S. Department of Transportation.

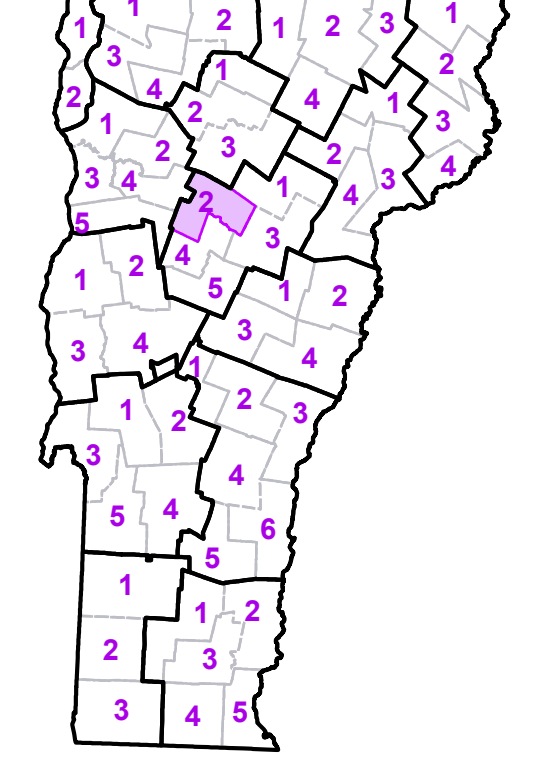


| TOWN | |
|------|-------------------|
| | Barre |
| | Barre City |
| | Berlin |
| | Bolton |
| | Buels Gore |
| | Calais |
| | Duxbury |
| | East Montpelier |
| | Elmore |
| | Essex |
| | Fayston |
| | Hinesburg |
| | Huntington |
| | Jericho |
| | Jericho Village |
| | Marshfield |
| | Middlesex |
| | Montpelier City |
| | Moretown |
| | Morristown |
| | Northfield |
| | Plainfield |
| | Richmond |
| | Starksboro |
| | Stowe |
| | Underhill |
| | Waitsfield |
| | Waterbury |
| | Waterbury Village |
| | Williston |
| | Woodbury |
| | Worcester |

B20 / C20 State Bridge or Culvert Identifier

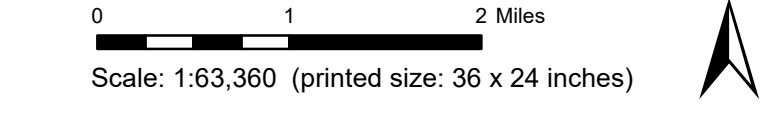
B20 / C20 Town Bridge or Culvert Identifier

Vermont State Plane Coordinate System
 North American Datum of 1983
 SPCS Zone Identifier: 4400
 Geodetic Reference System 80
 5,000-meter grid, Easting - Northing



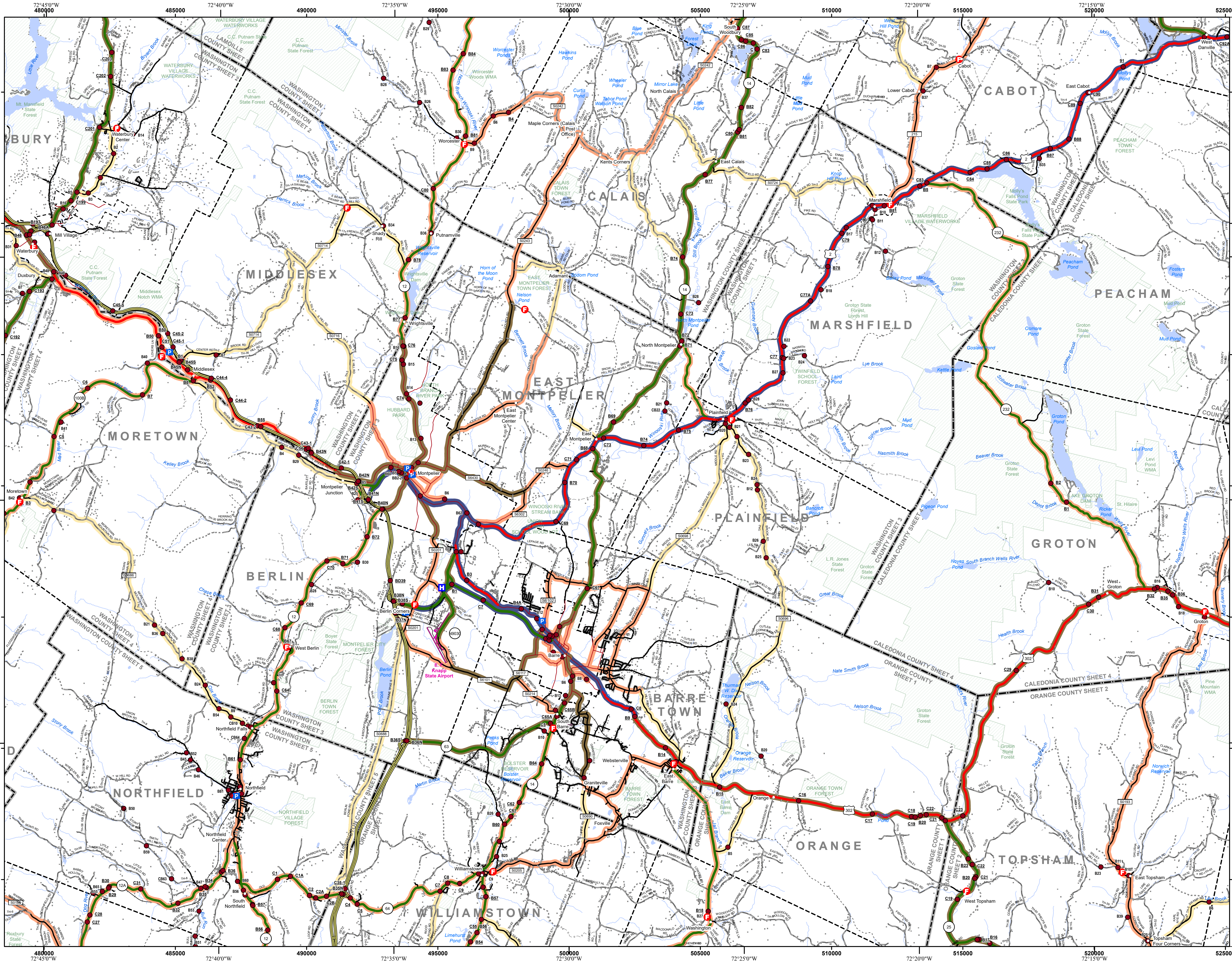
VERMONT COUNTY - TOWN MAP SERIES
WASHINGTON COUNTY
SHEET 2 OF 5

Prepared by the
 Vermont Agency of Transportation
 Mapping Section
 in cooperation with
 U.S. Department of Transportation
 Federal Highway Administration
 September 2018



Contact information: Vermont Agency of Transportation
 Division of Policy, Planning and Intermodal Development, Mapping Section
 1 National Life Drive, Montpelier, VT 05633-5001
 Telephone: 802-828-2600

This map was funded in part through grants from the Federal Highway Administration, U.S. Department of Transportation. The representation of the authors expressed herein do not necessarily state or reflect those of the U.S. Department of Transportation.

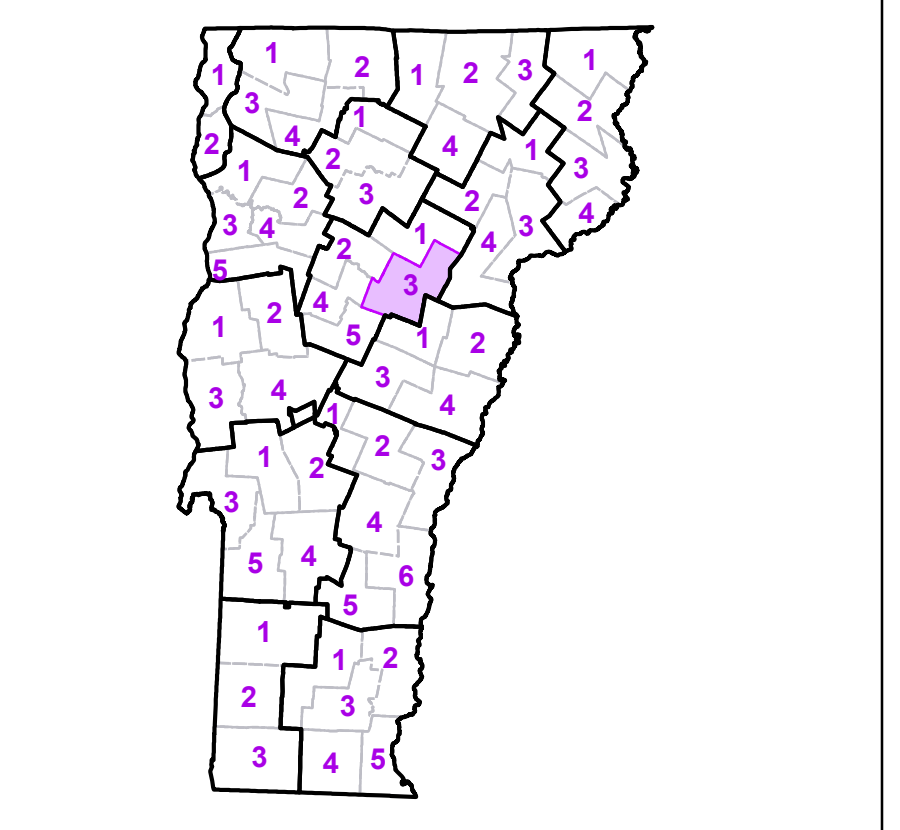


| | |
|--|--|
| | Interstate |
| | U.S. Route |
| | Vermont Route |
| | Town Highway |
| | Interstate |
| | US Route Divided |
| | US Route |
| | State Route Paved |
| | State Route Unpaved |
| | Town Highway Paved |
| | Town Highway Unpaved |
| | Unimproved or Impassible |
| | Discontinued Highway |
| | Town Legal Trail |
| | Winter Road Closure |
| | Railroad |
| | Federal Aid Route |
| | Principal Arterial |
| | Minor Arterial |
| | Major Collector |
| | Minor Collector-not Federal Aid eligible |
| | VTrans Maintenance District Office |
| | Emergency Response Site |
| | Fire Station |
| | Law Enforcement |
| | Hospital |
| | Building |
| | Localities |
| | State Capital (Montpelier) |
| | Bridge or Culvert |
| | Water Body |
| | Stream or Brook |
| | Public Airport |
| | State Boundary |
| | County Boundary |
| | Town Boundary |
| | Village Boundary |
| | Urban Compact Boundary |
| | Public Land - State/Municipal |
| | Green Mountain National Forest |
| | County Subtle |

| TOWN | |
|--------------------|--|
| Barnet | |
| Barre | |
| Barre City | |
| Berlin | |
| Cabot | |
| Calais | |
| Danville | |
| Duxbury | |
| East Montpelier | |
| Groton | |
| Groton Village | |
| Marshfield | |
| Marshfield Village | |
| Middlesex | |
| Montpelier City | |
| Moretown | |
| Newbury | |
| Northfield | |
| Orange | |
| Peacham | |
| Plainfield | |
| Roxbury | |
| Ryegate | |
| Stowe | |
| Topsham | |
| Watsfield | |
| Washington | |
| Waterbury | |
| Waterbury | |
| Waterbury | |
| Waterbury Village | |
| Williamstown | |
| Woodbury | |
| Worcester | |

B20 / C20 State Bridge or Culvert Identifier
 B20 / C20 Town Bridge or Culvert Identifier

Vermont State Plane Coordinate System
 North American Datum of 1983
 SPCS Zone Identifier: 4400
 Geodetic Reference System 80
 5,000-meter grid, Easting - Northing

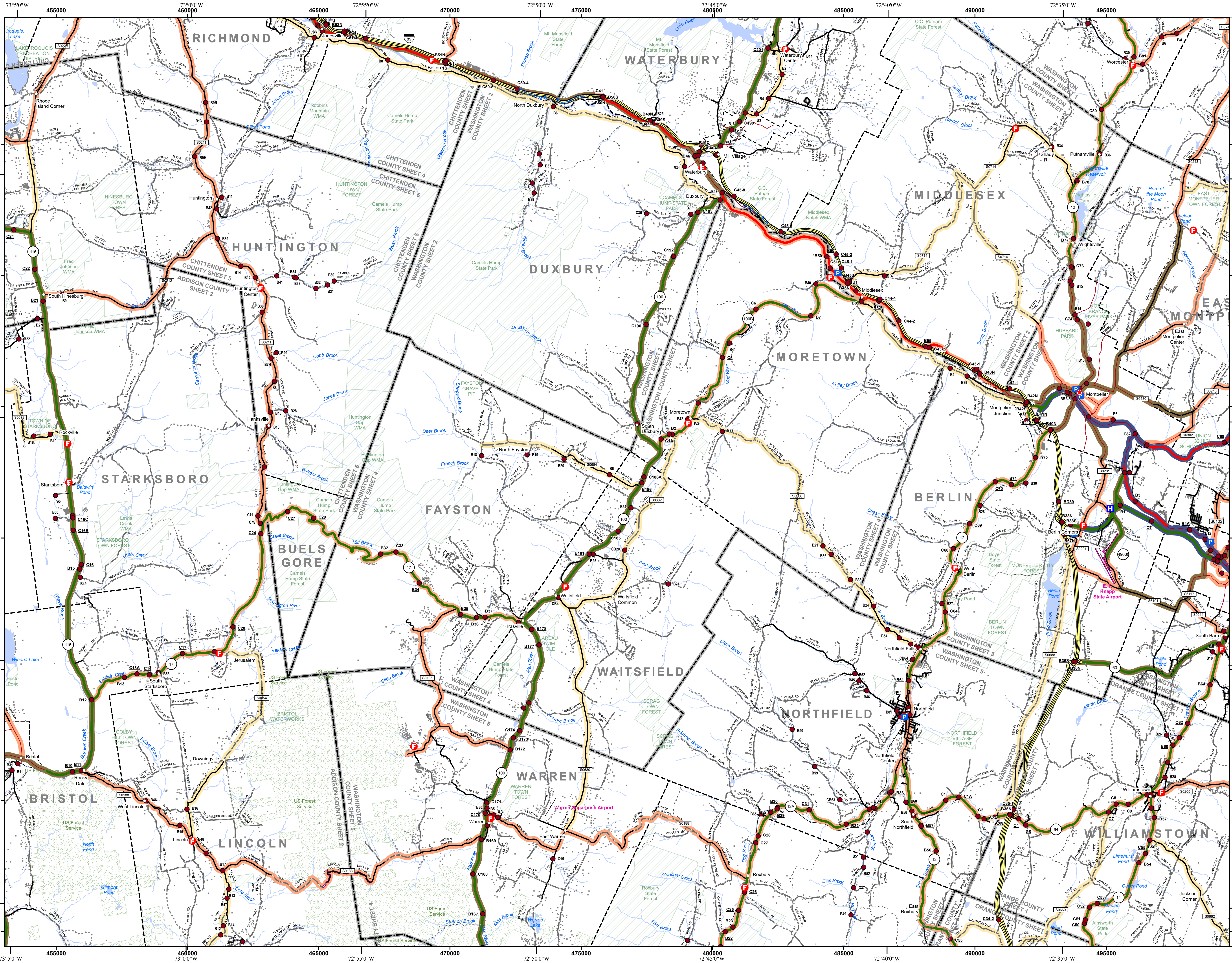


VERMONT COUNTY - TOWN MAP SERIES
WASHINGTON COUNTY
SHEET 3 OF 5

Prepared by the
 Vermont Agency of Transportation
 Mapping Section
 in cooperation with
 U.S. Department of Transportation
 Federal Highway Administration
 September 2018

Scale: 1:63,360 (printed size: 36 x 24 inches)

Contact information: Vermont Agency of Transportation
 Division of Policy, Planning and Intermodal Development, Mapping Section
 1 National Life Drive, Montpelier, VT 05633-5001
 Telephone: 802-828-2600
 This map was funded in part through grants from the Federal Highway Administration, U.S. Department of Transportation. The representation of the authors expressed herein do not necessarily state or reflect those of the U. S. Department of Transportation.

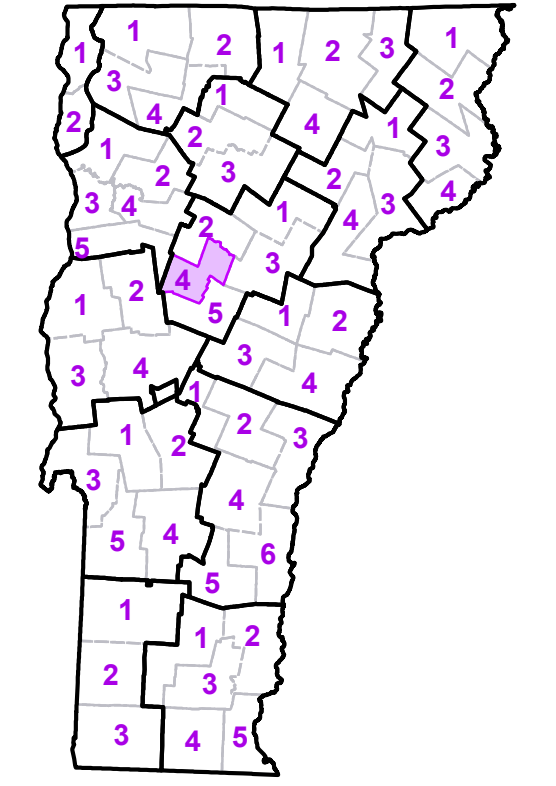


| | |
|--|--|
| | Interstate |
| | U.S. Route |
| | Vermont Route |
| | Town Highway |
| | Interstate |
| | US Route Divided |
| | US Route |
| | State Route Paved |
| | State Route Unpaved |
| | Town Highway Paved |
| | Town Highway Unpaved |
| | Unimproved or Impassible |
| | Discontinued Highway |
| | Town Legal Trail |
| | Winter Road Closure |
| | Railroad |
| | Federal Aid Route |
| | Principal Arterial |
| | Minor Arterial |
| | Major Collector |
| | Minor Collector-not Federal Aid eligible |
| | VTrans Maintenance District Office |
| | Emergency Response Site |
| | Fire Station |
| | Law Enforcement |
| | Hospital |
| | Building |
| | Localities |
| | State Capital (Montpelier) |
| | Bridge or Culvert |
| | Water Body |
| | Stream or Brook |
| | Public Airport |
| | State Boundary |
| | County Boundary |
| | Town Boundary |
| | Village Boundary |
| | Urban Compact Boundary |
| | Public Land - State/Municipal |
| | Green Mountain National Forest |
| | County Subtle |

| TOWN | |
|-------------------|--|
| Barre | |
| Barre City | |
| Berlin | |
| Bolton | |
| Bristol | |
| Bristol U.C. | |
| Brookfield | |
| Buels Gore | |
| Calais | |
| Dubury | |
| East Montpelier | |
| Fayston | |
| Granville | |
| Hinesburg | |
| Huntington | |
| Lincoln | |
| Middlesex | |
| Monkton | |
| Montpelier City | |
| Moretown | |
| Northfield | |
| Richmond | |
| Roxbury | |
| St. George | |
| Starksboro | |
| Waitsfield | |
| Warren | |
| Waterbury | |
| Waterbury | |
| Waterbury Village | |
| Williamstown | |
| Williston | |
| Worcester | |

B20 / C20 State Bridge or Culvert Identifier
 B20 / C20 Town Bridge or Culvert Identifier

Vermont State Plane Coordinate System
 North American Datum of 1983
 SPCS Zone Identifier: 4400
 Geodetic Reference System 80
 5,000-meter grid, Easting - Northing



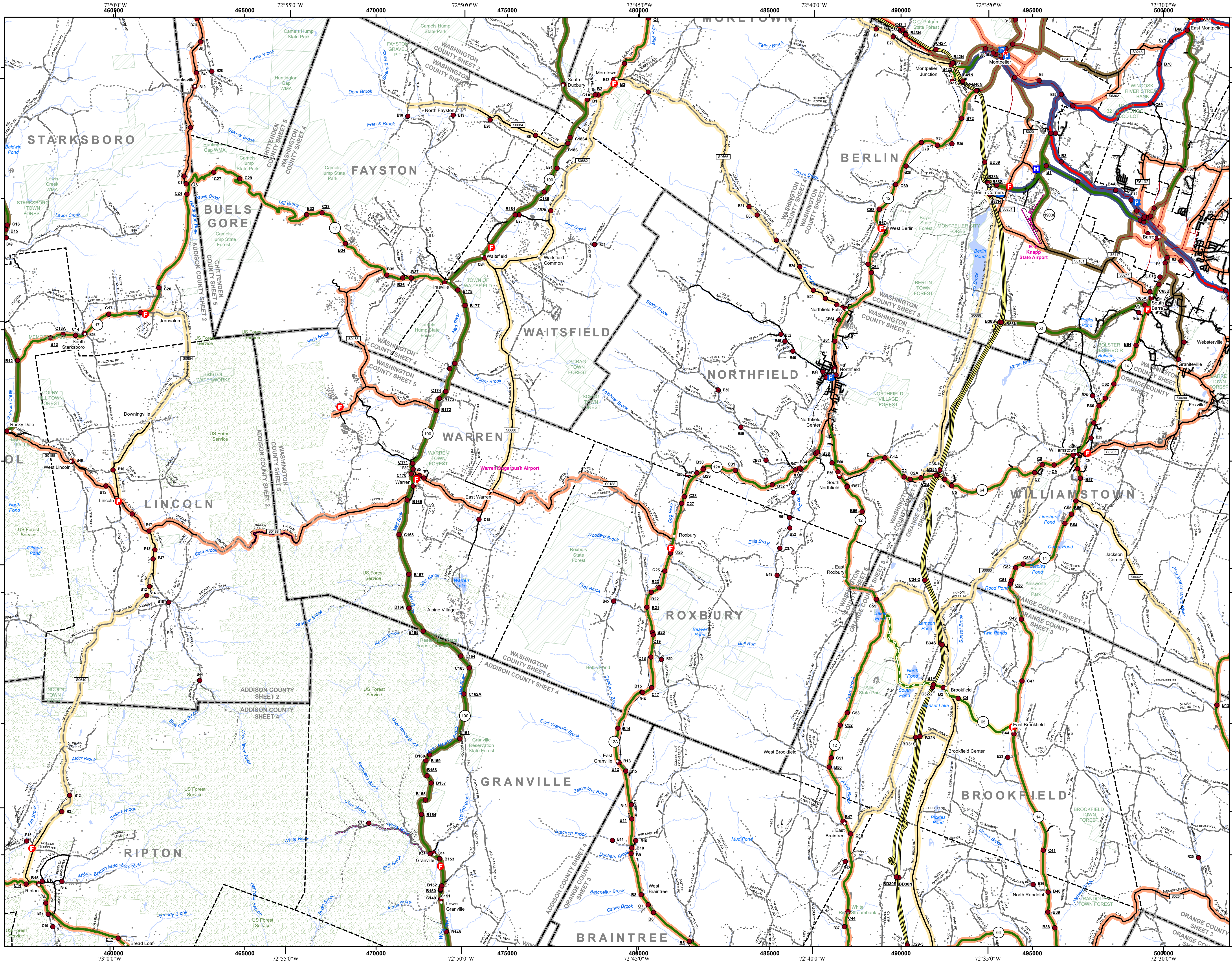
VERMONT COUNTY - TOWN MAP SERIES
WASHINGTON COUNTY
SHEET 4 OF 5

Prepared by the
 Vermont Agency of Transportation
 Mapping Section
 in cooperation with
 U.S. Department of Transportation
 Federal Highway Administration
 September 2018

Scale: 1:63,360 (printed size: 36 x 24 inches)

Contact information: Vermont Agency of Transportation
 Division of Policy, Planning and Intermodal Development, Mapping Section
 1 National Life Drive, Montpelier, VT 05633-5001
 Telephone: 802-828-2600

This map was funded in part through grants from the Federal Highway Administration, U.S. Department of Transportation. The representation of the authors expressed herein does not necessarily state or reflect those of the U.S. Department of Transportation.

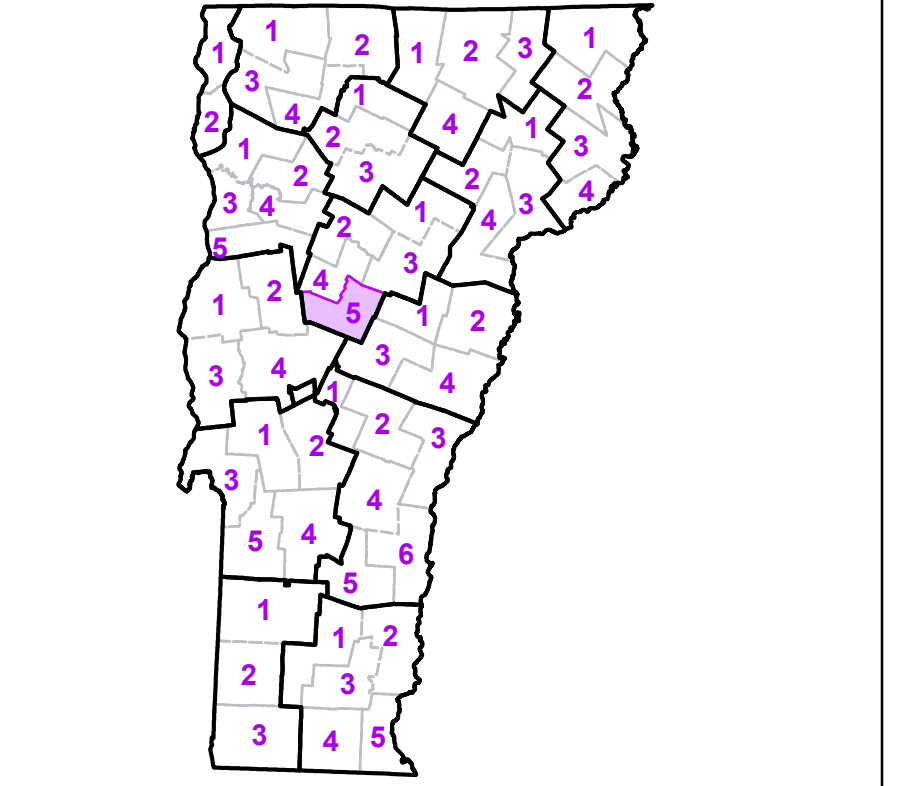


| TOWN | |
|-----------------|--|
| Barre | |
| Barre City | |
| Berlin | |
| Braintree | |
| Bristol | |
| Brookfield | |
| Buets Gore | |
| Chelsea | |
| Duxbury | |
| East Montpelier | |
| Fayston | |
| Granville | |
| Hancock | |
| Huntington | |
| Lincoln | |
| Middlesex | |
| Montpelier City | |
| Moretown | |
| Northfield | |
| Plainfield | |
| Randolph | |
| Ripton | |
| Rochester | |
| Roxbury | |
| Salisbury | |
| Starksboro | |
| Tunbridge | |
| Waitsfield | |
| Warren | |
| Washington | |
| Williamstown | |

- Interstate
- U.S. Route
- Vermont Route
- Town Highway
- Interstate
- US Route Divided
- US Route
- State Route Paved
- State Route Unpaved
- Town Highway Paved
- Town Highway Unpaved
- Unimproved or Impassible
- Discontinued Highway
- Town Legal Trail
- Winter Road Closure
- Railroad
- Federal Aid Route
 - Principal Arterial
 - Minor Arterial
 - Major Collector
 - Minor Collector-not Federal Aid eligible
- VTrans Maintenance District Office
- Emergency Response Site
 - Fire Station
 - Law Enforcement
 - Hospital
 - Building
 - Localities
 - State Capital (Montpelier)
 - Bridge or Culvert
 - Water Body
 - Stream or Brook
 - Public Airport
- County Boundary
- Town Boundary
- Village Boundary
- Urban Compact Boundary
- Public Land - State/Municipal
- Green Mountain National Forest
- County Subtle

B20 / C20 State Bridge or Culvert Identifier
 B20 / C20 Town Bridge or Culvert Identifier

Vermont State Plane Coordinate System
 North American Datum of 1983
 SPCS Zone Identifier: 4400
 Geodetic Reference System 80
 5,000-meter grid, Easting - Northing



VERMONT COUNTY - TOWN MAP SERIES
WASHINGTON COUNTY SHEET 5 OF 5

Prepared by the Vermont Agency of Transportation Mapping Section in cooperation with U.S. Department of Transportation Federal Highway Administration September 2018

Scale: 1:63,360 (printed size: 36 x 24 inches)

Contact information: Vermont Agency of Transportation, Division of Policy, Planning and Intermodal Development, Mapping Section, 1 National Life Drive, Montpelier, VT 05633-5001, Telephone: 802-828-2600

This map was funded in part through grants from the Federal Highway Administration, U.S. Department of Transportation. The representation of the authors expressed herein do not necessarily state or reflect those of the U.S. Department of Transportation.