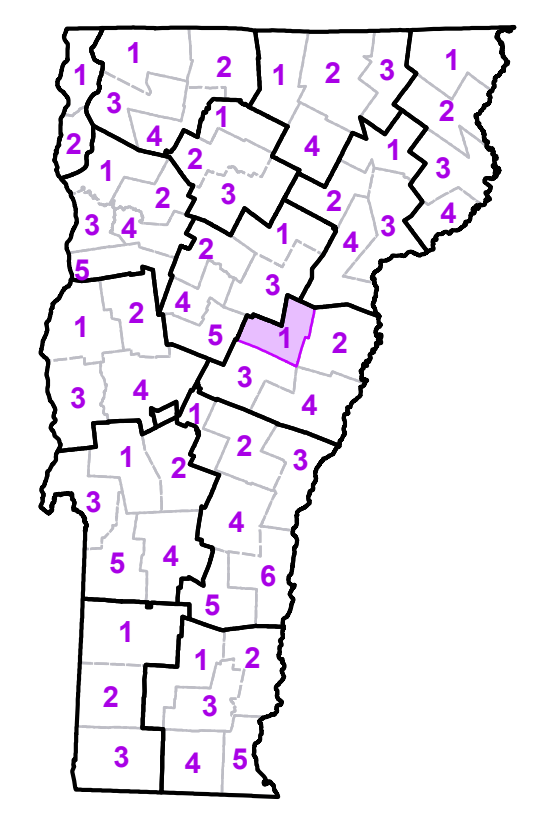


	Interstate
	U.S. Route
	Vermont Route
	Town Highway
	Interstate
	US Route Divided
	US Route
	State Route Paved
	State Route Unpaved
	Town Highway Paved
	Town Highway Unpaved
	Unimproved or Impassible
	Discontinued Highway
	Town Legal Trail
	Winter Road Closure
	Railroad
	Federal Aid Route
	Principal Arterial
	Minor Arterial
	Major Collector
	Minor Collector-not Federal Aid eligible
	VTrans Maintenance District Office
	Emergency Response Site
	Fire Station
	Law Enforcement
	Hospital
	Building
	Localities
	State Capital (Montpelier)
	Bridge or Culvert
	Water Body
	Stream or Brook
	Public Airport
	County Boundary
	Town Boundary
	Village Boundary
	Urban Compact Boundary
	Green Land - State/National Forest
	Green Mountain National Forest
	County Subtle

TOWN
Barre
Barre City
Berlin
Bradford
Braintree
Brookfield
Chelsea
Corinth
East Montpelier
Fairlee
Granville
Groton
Groton Village
Marshfield
Middlesex
Montpelier City
Moretown
Newbury
Northfield
Orange
Plainfield
Randolph
Roxbury
Ryegate
Topsham
Tunbridge
Vershire
Waitsfield
Washington
West Fairlee
Williamstown

B20 / C20 State Bridge or Culvert Identifier  
 B20 / C20 Town Bridge or Culvert Identifier

Vermont State Plane Coordinate System  
 North American Datum of 1983  
 SPCS Zone Identifier: 4400  
 Geodetic Reference System 80  
 5,000-meter grid, Easting - Northing

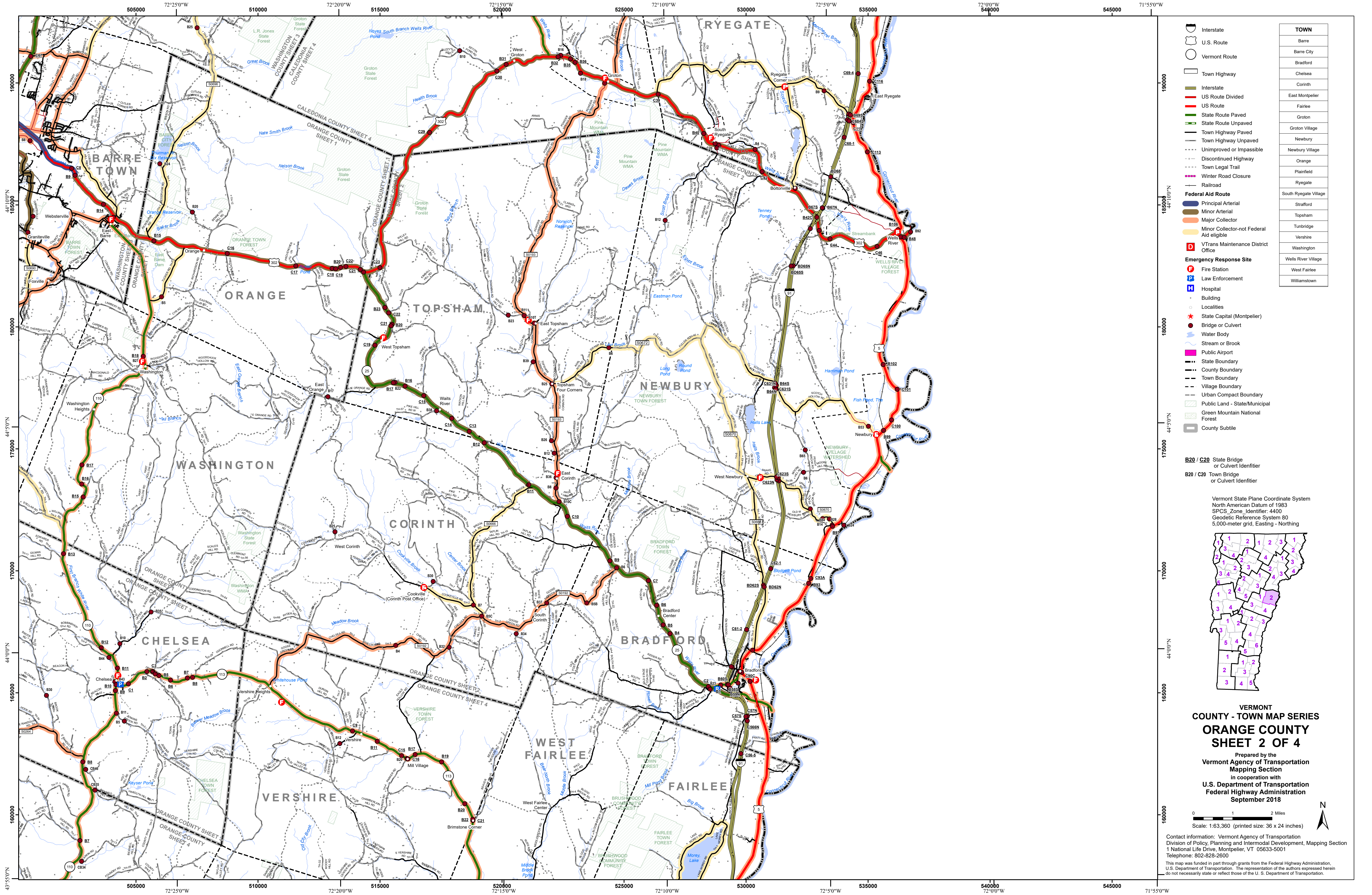


**VERMONT COUNTY - TOWN MAP SERIES**  
**ORANGE COUNTY**  
**SHEET 1 OF 4**

Prepared by the  
 Vermont Agency of Transportation  
 Mapping Section  
 in cooperation with  
 U.S. Department of Transportation  
 Federal Highway Administration  
 September 2018

Scale: 1:63,360 (printed size: 36 x 24 inches)

Contact information: Vermont Agency of Transportation  
 Division of Policy, Planning and Intermodal Development, Mapping Section  
 1 National Life Drive, Montpelier, VT 05633-5001  
 Telephone: 802-828-2600  
 This map was funded in part through grants from the Federal Highway Administration, U.S. Department of Transportation. The representation of the authors expressed herein do not necessarily state or reflect those of the U.S. Department of Transportation.



TOWN	
Barre	
Barre City	
Bradford	
Chelsea	
Corinth	
East Montpelier	
Fairlee	
Groton	
Groton Village	
Newbury	
Newbury Village	
Orange	
Plainfield	
Ryegate	
South Ryegate Village	
Stratford	
Topsham	
Tunbridge	
Vershire	
Washington	
Wells River Village	
West Fairlee	
Williamstown	

- Interstate
- U.S. Route
- Vermont Route
- Town Highway
- Interstate
- US Route Divided
- US Route
- State Route Paved
- State Route Unpaved
- Town Highway Paved
- Town Highway Unpaved
- Unimproved or Impassible
- Discontinued Highway
- Town Legal Trail
- Winter Road Closure
- Railroad
- Federal Aid Route
  - Principal Arterial
  - Minor Arterial
  - Major Collector
  - Minor Collector-not Federal Aid eligible
- VTrans Maintenance District Office
- Emergency Response Site
  - Fire Station
  - Law Enforcement
  - Hospital
  - Building
  - Localities
  - State Capital (Montpelier)
  - Bridge or Culvert
  - Water Body
  - Stream or Brook
  - Public Airport
- State Boundary
- County Boundary
- Town Boundary
- Village Boundary
- Urban Compact Boundary
- Public Land - State/Municipal
- Green Mountain National Forest
- County Subtle

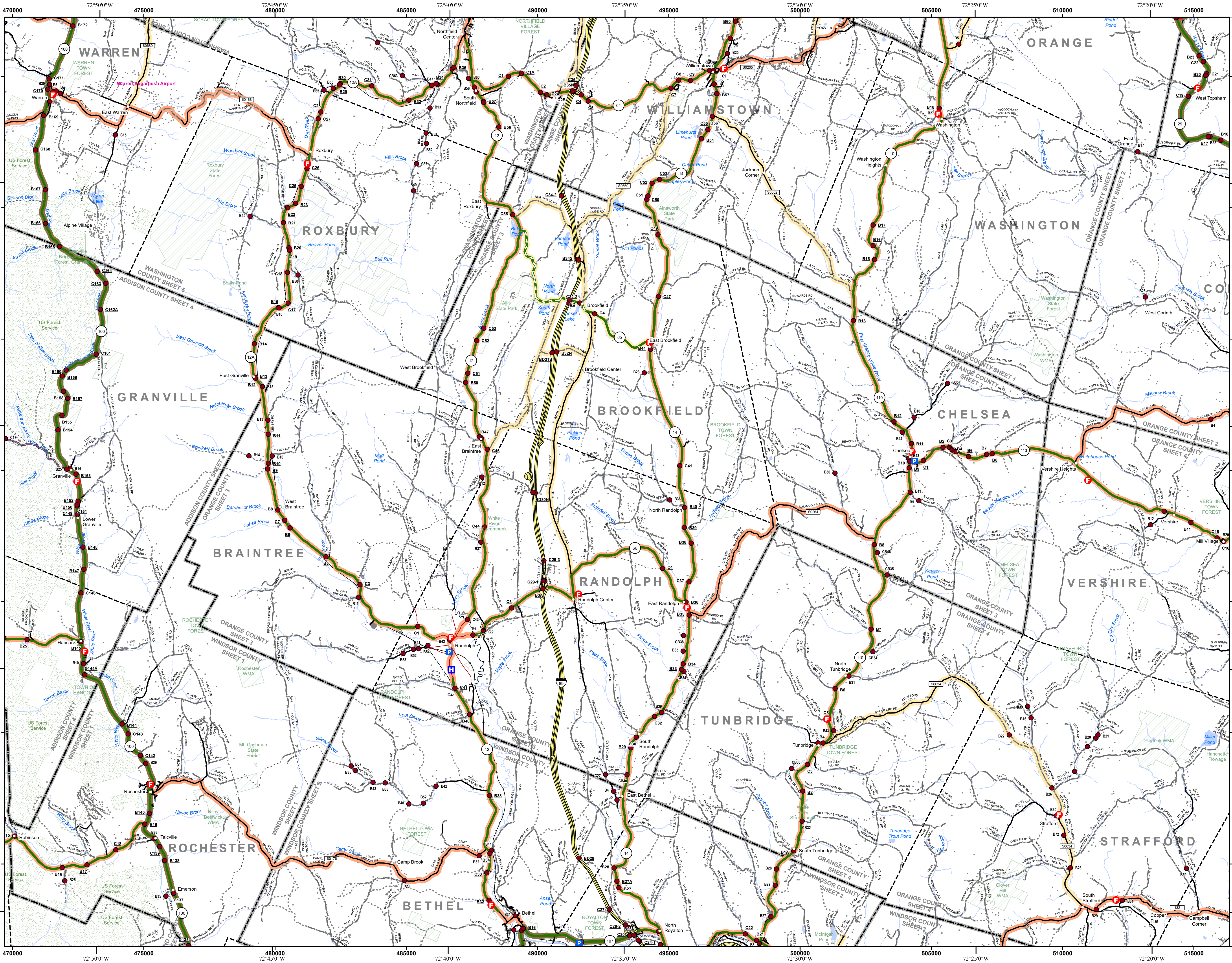
B20 / C20 State Bridge or Culvert Identifier  
 B20 / C20 Town Bridge or Culvert Identifier

Vermont State Plane Coordinate System  
 North American Datum of 1983  
 SPCS Zone Identifier: 4400  
 Geodetic Reference System 80  
 5,000-meter grid, Easting - Northing

**VERMONT COUNTY - TOWN MAP SERIES**  
**ORANGE COUNTY SHEET 2 OF 4**  
 Prepared by the Vermont Agency of Transportation Mapping Section in cooperation with U.S. Department of Transportation Federal Highway Administration September 2018

0 1 2 Miles  
 Scale: 1:63,360 (printed size: 36 x 24 inches)

Contact information: Vermont Agency of Transportation  
 Division of Policy, Planning and Intermodal Development, Mapping Section  
 1 National Life Drive, Montpelier, VT 05633-5001  
 Telephone: 802-828-2600  
 This map was funded in part through grants from the Federal Highway Administration, U.S. Department of Transportation. The representation of the authors expressed herein do not necessarily state or reflect those of the U.S. Department of Transportation.

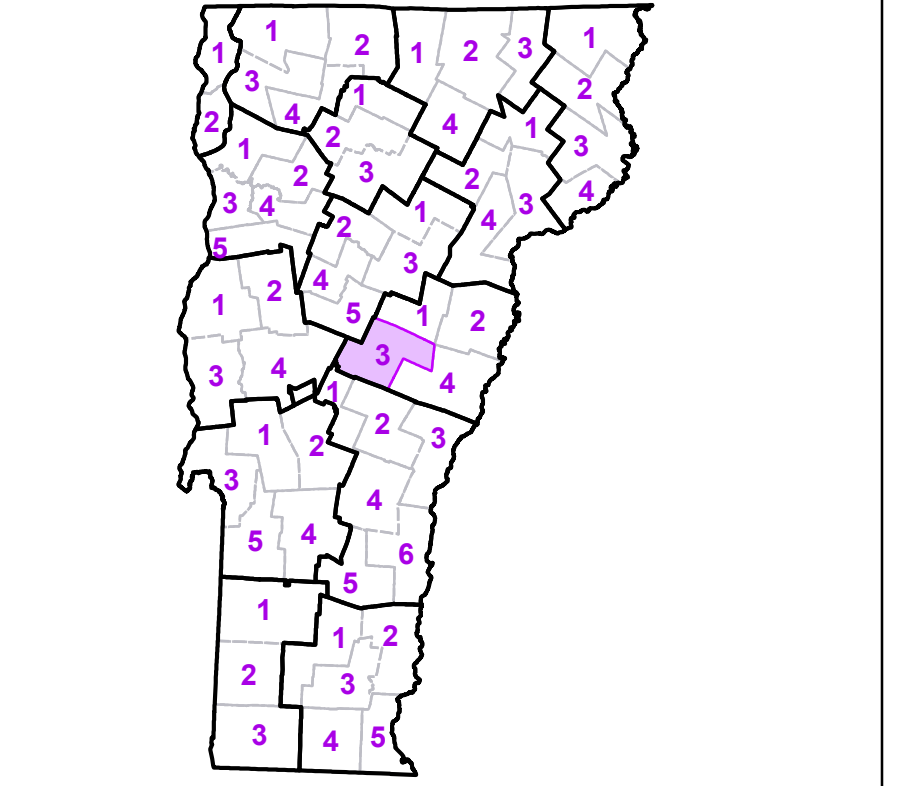


TOWN	
Bare	
Bethel	
Braintree	
Brookfield	
Chelsea	
Chittenden	
Corinth	
Granville	
Hancock	
Northfield	
Orange	
Pittsfield	
Randolph	
Randolph U.C.	
Rochester	
Roxbury	
Royalton	
Sharon	
Stockbridge	
Stratford	
Theford	
Topsham	
Tunbridge	
Vershire	
Waitsfield	
Warren	
Washington	
Williamstown	

- Interstate
- U.S. Route
- Vermont Route
- Town Highway
- Interstate
- US Route Divided
- US Route
- State Route Paved
- State Route Unpaved
- Town Highway Paved
- Town Highway Unpaved
- Unimproved or Impassible
- Discontinued Highway
- Town Legal Trail
- Winter Road Closure
- Railroad
- Federal Aid Route
  - Principal Arterial
  - Minor Arterial
  - Major Collector
  - Minor Collector-not Federal Aid eligible
- VTrans Maintenance District Office
- Emergency Response Site
  - Fire Station
  - Law Enforcement
  - Hospital
  - Building
  - Localities
  - State Capital (Montpelier)
  - Bridge or Culvert
  - Water Body
  - Stream or Brook
  - Public Airport
- State Boundary
- County Boundary
- Town Boundary
- Village Boundary
- Urban Compact Boundary
- Public Land - State/Municipal
- Green Mountain National Forest
- County Subtle

B20 / C20 State Bridge or Culvert Identifier  
 B20 / C20 Town Bridge or Culvert Identifier

Vermont State Plane Coordinate System  
 North American Datum of 1983  
 SPCS Zone Identifier: 4400  
 Geodetic Reference System 80  
 5,000-meter grid, Easting - Northing



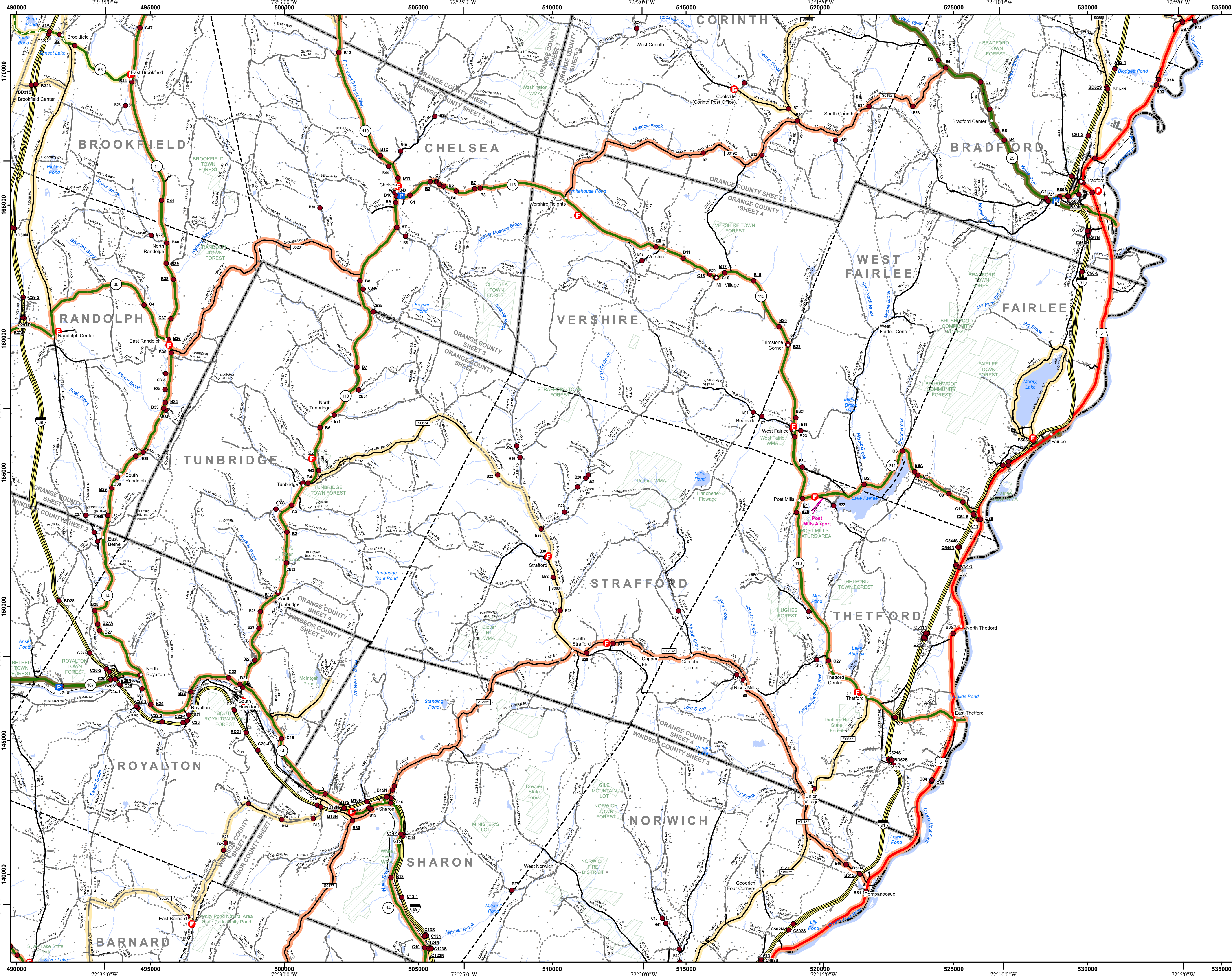
**VERMONT COUNTY - TOWN MAP SERIES**  
**ORANGE COUNTY**  
**SHEET 3 OF 4**

Prepared by the  
 Vermont Agency of Transportation  
 Mapping Section  
 in cooperation with  
 U.S. Department of Transportation  
 Federal Highway Administration  
 September 2018

Scale: 1:63,360 (printed size: 36 x 24 inches)

Contact information: Vermont Agency of Transportation  
 Division of Policy, Planning and Intermodal Development, Mapping Section  
 1 National Life Drive, Montpelier, VT 05633-5001  
 Telephone: 802-828-2600

This map was funded in part through grants from the Federal Highway Administration, U.S. Department of Transportation. The representation of the authors expressed herein do not necessarily state or reflect those of the U. S. Department of Transportation.



- |  |                          |
|--|--------------------------|
|  | Interstate               |
|  | U.S. Route               |
|  | Vermont Route            |
|  | Town Highway             |
|  | Interstate               |
|  | US Route Divided         |
|  | US Route                 |
|  | State Route Paved        |
|  | State Route Unpaved      |
|  | Town Highway Paved       |
|  | Town Highway Unpaved     |
|  | Unimproved or Impassible |
|  | Discontinued Highway     |
|  | Town Legal Trail         |
|  | Winter Road Closure      |
|  | Railroad                 |
- |  |  |
|--|--|
|  | Federal Aid Road                         |
|  | Principal Arterial                       |
|  | Minor Arterial                           |
|  | Major Collector                          |
|  | Minor Collector-not Federal Aid eligible |
- |  |                                    |
|--|------------------------------------|
|  | VTrans Maintenance District Office |
|--|------------------------------------|
- |  |                                |
|--|--------------------------------|
|  | Emergency Response Site        |
|  | Fire Station                   |
|  | Law Enforcement                |
|  | Hospital                       |
|  | Building                       |
|  | Localities                     |
|  | State Capital (Montpelier)     |
|  | Bridge or Culvert              |
|  | Water Body                     |
|  | Stream or Brook                |
|  | Public Airport                 |
|  | State Boundary                 |
|  | County Boundary                |
|  | Town Boundary                  |
|  | Village Boundary               |
|  | Urban Compact Boundary         |
|  | Public Land - State/Municipal  |
|  | Green Mountain National Forest |
|  | County Subtle                  |
- B20 / C20 State Bridge or Culvert Identifier**
- B20 / C20 Town Bridge or Culvert Identifier**

Vermont State Plane Coordinate System  
 North American Datum of 1983  
 SPCS Zone Identifier: 4400  
 Geodetic Reference System 80  
 5,000-meter grid, Easting - Northing

**VERMONT COUNTY - TOWN MAP SERIES**  
**ORANGE COUNTY SHEET 4 OF 4**

Prepared by the  
 Vermont Agency of Transportation  
 Mapping Section  
 in cooperation with  
 U.S. Department of Transportation  
 Federal Highway Administration  
 September 2018

Scale: 1:63,360 (printed size: 36 x 24 inches)

Contact information: Vermont Agency of Transportation  
 Division of Policy, Planning and Intermodal Development, Mapping Section  
 1 National Life Drive, Montpelier, VT 05633-5001  
 Telephone: 802-828-2600

This map was funded in part through grants from the Federal Highway Administration, U.S. Department of Transportation. The representation of the authors expressed herein do not necessarily state or reflect those of the U.S. Department of Transportation.