

TOWN	
[Symbol]	Averill
[Symbol]	Averys Gore
[Symbol]	Bloomfield
[Symbol]	Brighton
[Symbol]	Brunswick
[Symbol]	Canaan
[Symbol]	Charleston
[Symbol]	Ferdinand
[Symbol]	Holland
[Symbol]	Island Pond U.C.
[Symbol]	Lemington
[Symbol]	Lewis
[Symbol]	Morgan
[Symbol]	Newark
[Symbol]	Norton
[Symbol]	Warners Grant
[Symbol]	Warren Gore
[Symbol]	Westmore

- Interstate
- U.S. Route
- Vermont Route
- Town Highway
- Interstate
- US Route Divided
- US Route
- State Route Paved
- State Route Unpaved
- Town Highway Paved
- Town Highway Unpaved
- Unimproved or Impassible
- Discontinued Highway
- Town Legal Trail
- Winter Road Closure
- Railroad

Federal Aid Route

- Principal Arterial
- Minor Arterial
- Major Collector
- Minor Collector-not Federal Aid eligible

VTrans Maintenance District Office

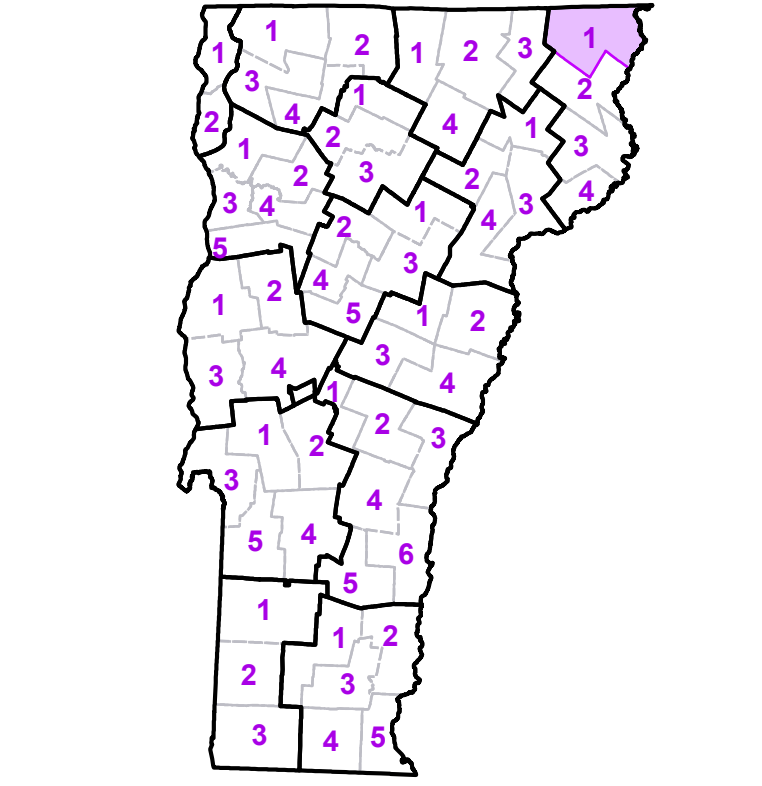
Emergency Response Site

- Fire Station
- Law Enforcement
- Hospital
- Building
- Localities
- State Capital (Montpelier)
- Bridge or Culvert
- Water Body
- Stream or Brook
- Public Airport

- State Boundary
- County Boundary
- Town Boundary
- Village Boundary
- Urban Compact Boundary
- Public Land - State/Municipal
- Green Mountain National Forest
- County Subtle

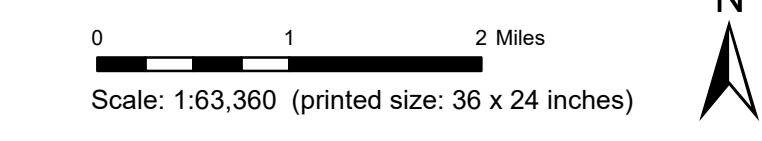
B20 / C20 State Bridge or Culvert Identifier
B20 / C20 Town Bridge or Culvert Identifier

Vermont State Plane Coordinate System
 North American Datum of 1983
 SPCS_Zone_Identifier: 4400
 Geodetic Reference System 80
 5,000-meter grid, Easting - Northing



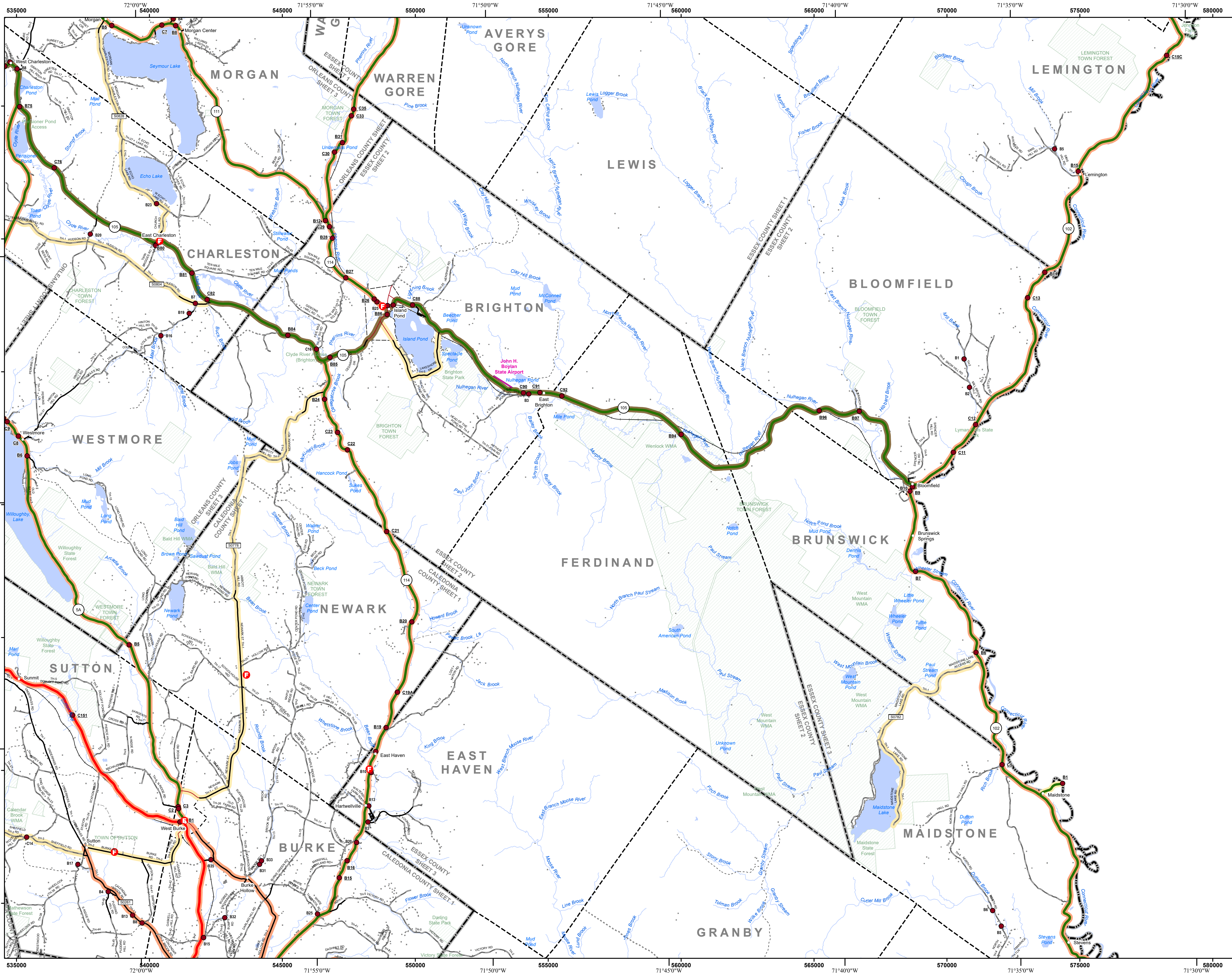
VERMONT COUNTY - TOWN MAP SERIES
ESSEX COUNTY SHEET 1 OF 4

Prepared by the Vermont Agency of Transportation Mapping Section in cooperation with U.S. Department of Transportation Federal Highway Administration September 2018



Contact information: Vermont Agency of Transportation
 Division of Policy, Planning and Intermodal Development, Mapping Section
 1 National Life Drive, Montpelier, VT 05633-5001
 Telephone: 802-828-2600

This map was funded in part through grants from the Federal Highway Administration, U.S. Department of Transportation. The representation of the authors expressed herein does not necessarily state or reflect those of the U.S. Department of Transportation.

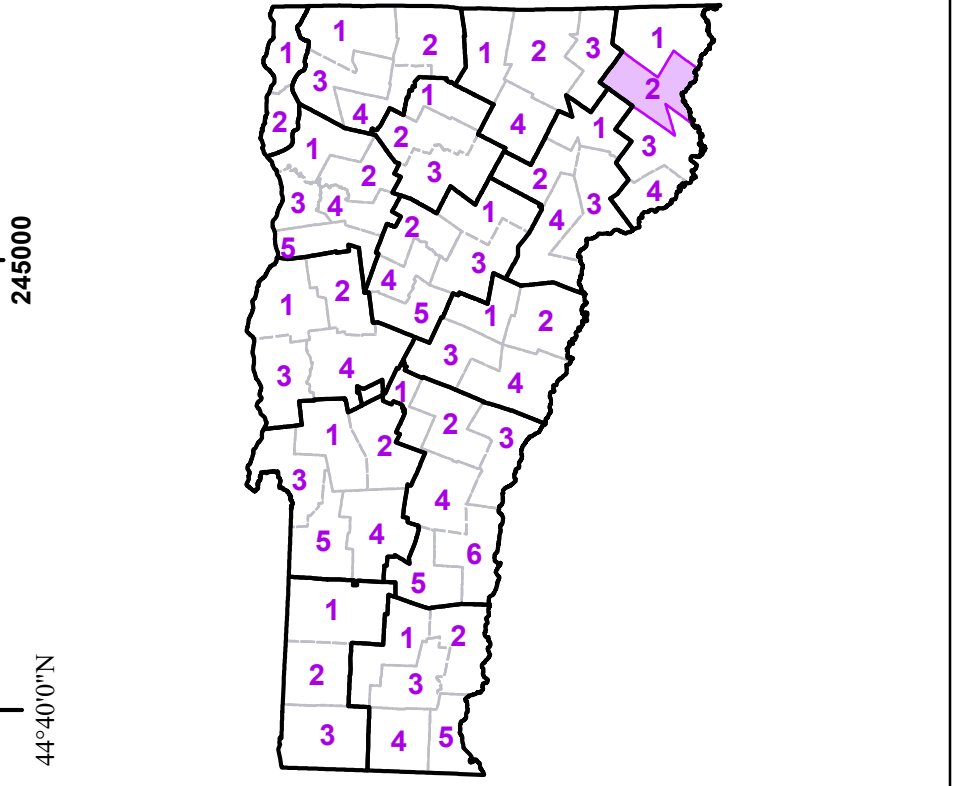


	Interstate
	U.S. Route
	Vermont Route
	Town Highway
	Interstate
	US Route Divided
	US Route
	State Route Paved
	State Route Unpaved
	Town Highway Paved
	Town Highway Unpaved
	Unimproved or Impassible
	Discontinued Highway
	Town Legal Trail
	Winter Road Closure
	Railroad
Federal Aid Route	
	Principal Arterial
	Minor Arterial
	Major Collector
	Minor Collector-not Federal Aid eligible
	VTrans Maintenance District Office
Emergency Response Site	
	Fire Station
	Law Enforcement
	Hospital
	Building
	Localities
	State Capital (Montpelier)
	Bridge or Culvert
	Water Body
	Stream or Brook
	Public Airport
	State Boundary
	County Boundary
	Town Boundary
	Village Boundary
	Urban Compact Boundary
	Public Land - State/Municipal
	Green Mountain National Forest
	County Subtle

TOWN	
Averill	
Averys Gore	
Bloomfield	
Brighton	
Brownington	
Brunswick	
Burke	
Canaan	
Charleston	
East Haven	
Ferdinand	
Granby	
Guildhall	
Island Pond U.C.	
Lemington	
Lewis	
Lyndon	
Maidstone	
Morgan	
Newark	
Sutton	
Victory	
Warrens Grant	
Warren Gore	
West Burke Village	
Westmore	
Wheelock	

B20 / C20 State Bridge or Culvert Identifier
 B20 / C20 Town Bridge or Culvert Identifier

Vermont State Plane Coordinate System
 North American Datum of 1983
 SPCS Zone Identifier: 4400
 Geodetic Reference System 80
 5,000-meter grid, Easting - Northing

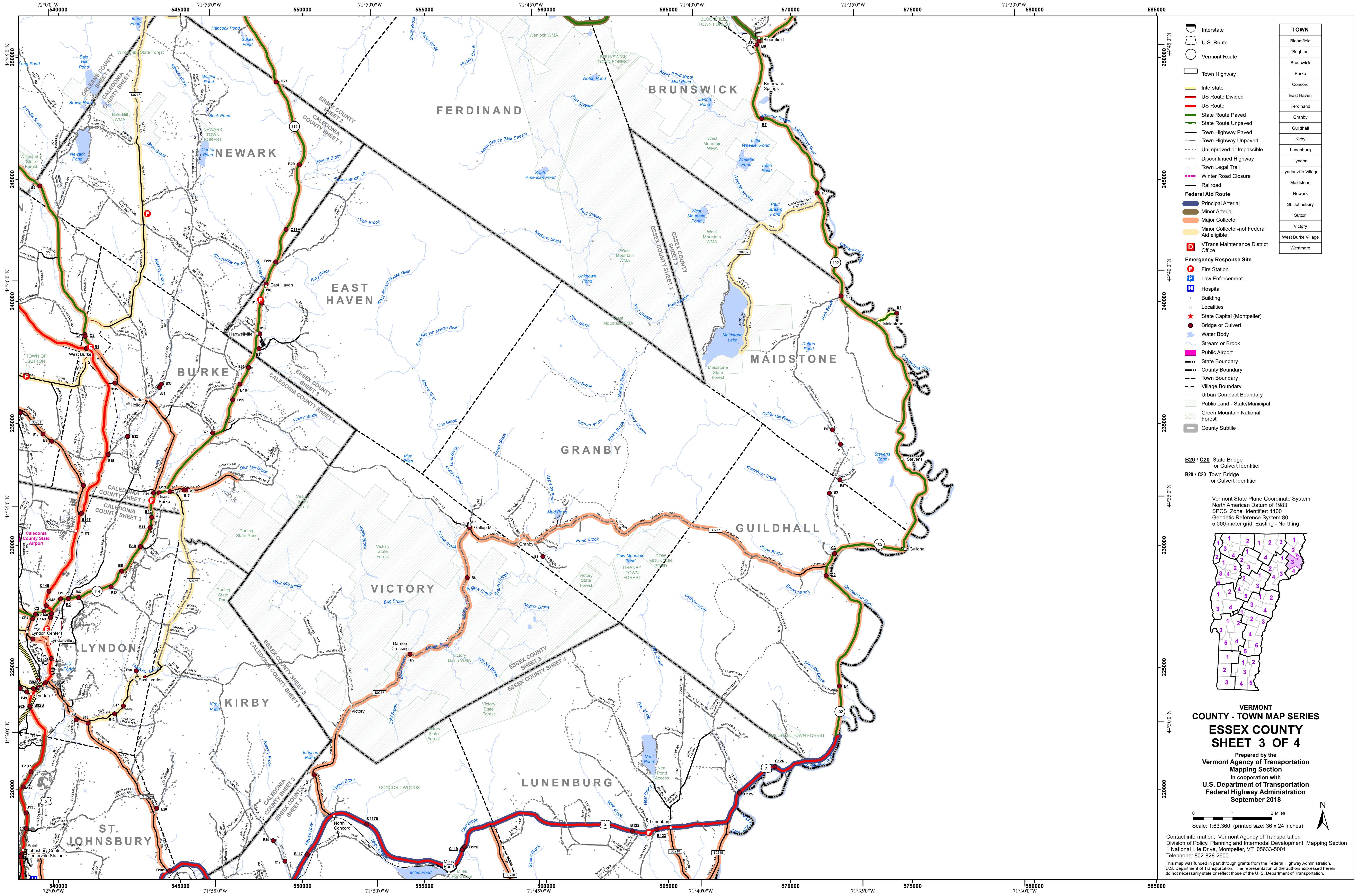


VERMONT COUNTY - TOWN MAP SERIES
ESSEX COUNTY SHEET 2 OF 4

Prepared by the Vermont Agency of Transportation Mapping Section in cooperation with U.S. Department of Transportation Federal Highway Administration September 2018



Contact information: Vermont Agency of Transportation
 Division of Policy, Planning and Intermodal Development, Mapping Section
 1 National Life Drive, Montpelier, VT 05633-5001
 Telephone: 802-828-2600
 This map was funded in part through grants from the Federal Highway Administration, U.S. Department of Transportation. The representation of the authors expressed herein do not necessarily state or reflect those of the U. S. Department of Transportation.

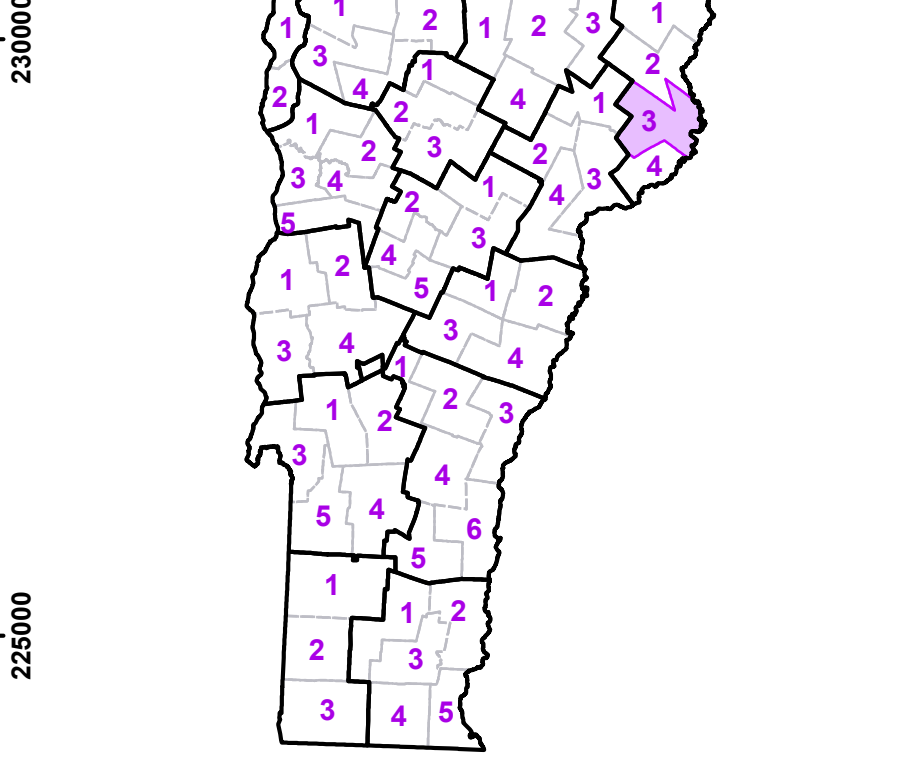


- Interstate
 - U.S. Route
 - Vermont Route
 - Town Highway
 - Interstate
 - US Route Divided
 - US Route
 - State Route Paved
 - State Route Unpaved
 - Town Highway Paved
 - Town Highway Unpaved
 - Unimproved or Impassible
 - Discontinued Highway
 - Town Legal Trail
 - Winter Road Closure
 - Railroad
- Federal Aid Route**
- Principal Arterial
 - Minor Arterial
 - Major Collector
 - Minor Collector-not Federal Aid eligible
- VTrans Maintenance District Office

TOWN
Bloomfield
Brighton
Brunswick
Burke
Concord
East Haven
Ferdinand
Granby
Guildhall
Kirby
Lunenburg
Lyndon
Lyndonville Village
Maldstone
Newark
St. Johnsbury
Sutton
Victory
West Burke Village
Westmore

- Emergency Response Site**
- Fire Station
 - Law Enforcement
 - Hospital
 - Building
 - Localities
 - State Capital (Montpelier)
 - Bridge or Culvert
 - Stream or Brook
 - Water Body
 - Public Airport
- Boundary Symbols**
- State Boundary
 - County Boundary
 - Town Boundary
 - Village Boundary
 - Urban Compact Boundary
 - Public Land - State/Municipal
 - Green Mountain National Forest
 - County Subtle
- B20 / C20 State Bridge or Culvert Identifier**
- B20 / C20 Town Bridge or Culvert Identifier**

Vermont State Plane Coordinate System
 North American Datum of 1983
 SPCS Zone Identifier: 4400
 Geodetic Reference System 80
 5,000-meter grid, Easting - Northing



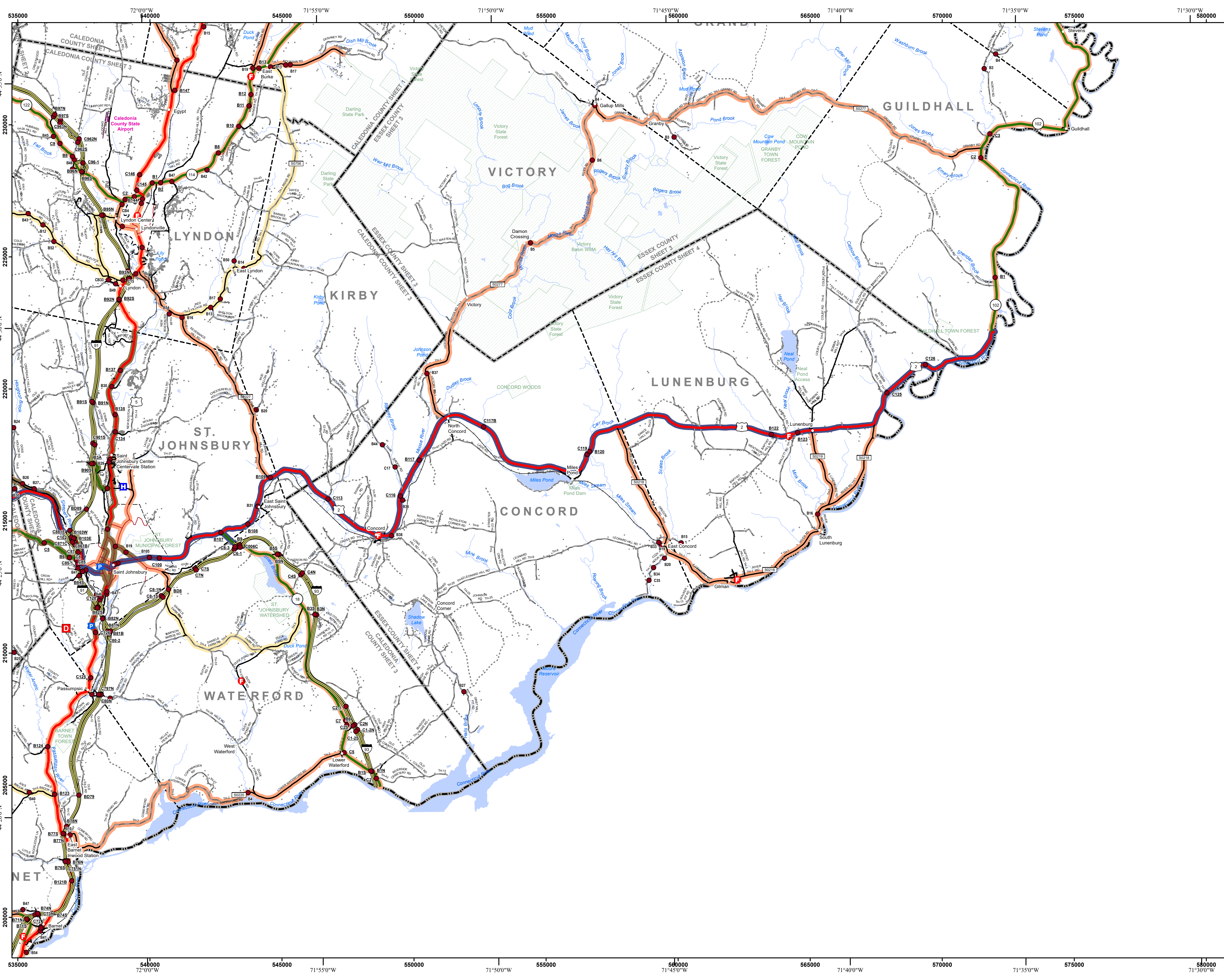
VERMONT COUNTY - TOWN MAP SERIES
ESSEX COUNTY SHEET 3 OF 4

Prepared by the
Vermont Agency of Transportation Mapping Section
 in cooperation with
U.S. Department of Transportation Federal Highway Administration
 September 2018

0 1 2 Miles
 Scale: 1:63,360 (printed size: 36 x 24 inches)

Contact information: Vermont Agency of Transportation
 Division of Policy, Planning and Intermodal Development, Mapping Section
 1 National Life Drive, Montpelier, VT 05633-5001
 Telephone: 802-828-2600

This map was funded in part through grants from the Federal Highway Administration, U.S. Department of Transportation. The representation of the authors expressed herein do not necessarily state or reflect those of the U.S. Department of Transportation.

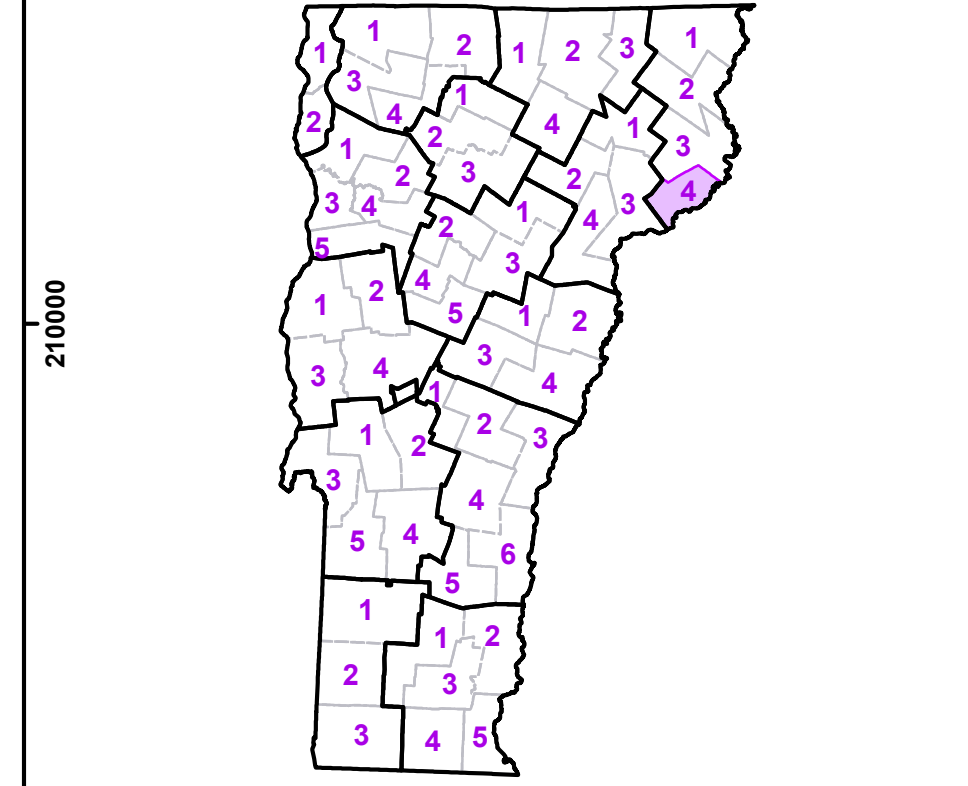


- Interstate
 - U.S. Route
 - Vermont Route
 - Town Highway
 - Interstate
 - US Route Divided
 - US Route
 - State Route Paved
 - State Route Unpaved
 - Town Highway Paved
 - Town Highway Unpaved
 - Unimproved or Impassible
 - Discontinued Highway
 - Town Legal Trail
 - Winter Road Closure
 - Railroad
- Federal Aid Route**
- Principal Arterial
 - Minor Arterial
 - Major Collector
 - Minor Collector-not Federal Aid eligible
- VTrans Maintenance District Office
- Emergency Response Site**
- Fire Station
 - Law Enforcement
 - Hospital
 - Building
 - Localities
 - State Capital (Montpelier)
 - Bridge or Culvert
 - Water Body
 - Stream or Brook
 - Public Airport
- State Boundary
 - County Boundary
 - Town Boundary
 - Village Boundary
 - Urban Compact Boundary
 - Public Land - State/Municipal
 - Green Mountain National Forest
 - County Subtle

TOWN
Barnet
Burke
Concord
Danville
East Haven
Granby
Guildhall
Kirby
Lunenburg
Lyndon
Lyndonville Village
Maldstone
St. Johnsbury
St. Johnsbury U.C.
Sutton
Victory
Waterford
Wheelock

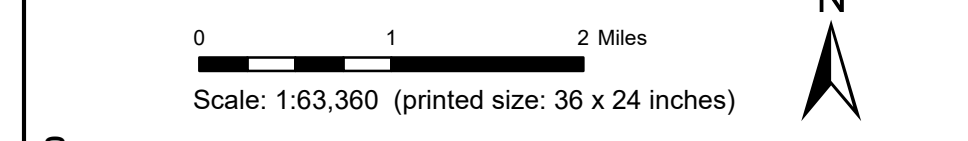
B20 / C20 State Bridge or Culvert Identifier
B20 / C20 Town Bridge or Culvert Identifier

Vermont State Plane Coordinate System
 North American Datum of 1983
 SPCS_Zone_Identifier: 4400
 Geodetic Reference System 80
 5,000-meter grid, Easting - Northing



VERMONT COUNTY - TOWN MAP SERIES
ESSEX COUNTY SHEET 4 OF 4

Prepared by the Vermont Agency of Transportation Mapping Section in cooperation with U.S. Department of Transportation Federal Highway Administration September 2018



Contact information: Vermont Agency of Transportation
 Division of Policy, Planning and Intermodal Development, Mapping Section
 1 National Life Drive, Montpelier, VT 05633-5001
 Telephone: 802-828-2600

This map was funded in part through grants from the Federal Highway Administration, U.S. Department of Transportation. The representation of the authors expressed herein do not necessarily state or reflect those of the U.S. Department of Transportation.