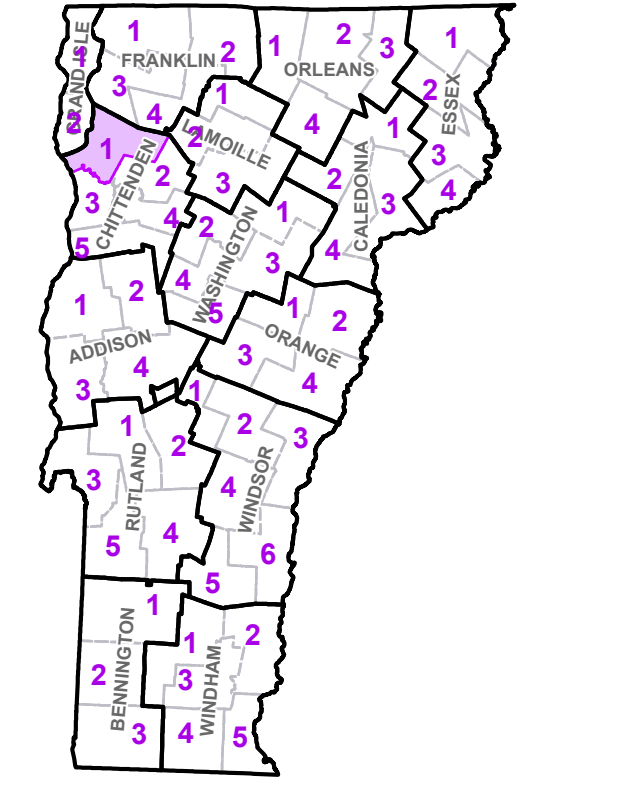


- Interstate
- U.S. Route
- Vermont Route
- Town Highway
- Interstate
- US Route Divided
- US Route
- State Route Paved
- State Route Unpaved
- Town Highway Paved
- Town Highway Unpaved
- Unimproved or Impassible
- Discontinued Highway
- Town Legal Trail
- Winter Road Closure
- Railroad
- Federal Aid Route**
- Principal Arterial
- Minor Arterial
- Major Collector
- Minor Collector-not Federal Aid eligible
- VTrans Maintenance District Office
- Emergency Response Site**
- Fire Station
- Law Enforcement
- Hospital
- Building
- Localities
- State Capital (Montpelier)
- Bridge or Culvert
- Water Body
- Stream or Brook
- Public Airport
- State Boundary
- County Boundary
- Town Boundary
- Village Boundary
- Urban Compact Boundary
- Public Land - State/Municipal
- Green Mountain National Forest
- County Subtle

TOWN	
	Bakersfield
	Bolton
	Burlington City
	Cambridge
	Cambridge Village
	Colchester
	Essex
	Essex Center U.C.
	Essex Junction Village
	Fairfax
	Fairfield
	Fletcher
	Georgia
	Grand Isle
	Jericho
	Jericho Village
	Milton
	Milton U.C.
	North Hero
	Shelburne
	South Burlington City
	South Hero
	St. Albans
	Underhill
	Westford
	Winoski City

B20 / C20 State Bridge or Culvert Identifier
B20 / C20 Town Bridge or Culvert Identifier

Vermont State Plane Coordinate System
 North American Datum of 1983
 SPCS Zone Identifier: 4400
 Geodetic Reference System 80
 5,000-meter grid, Easting - Northing

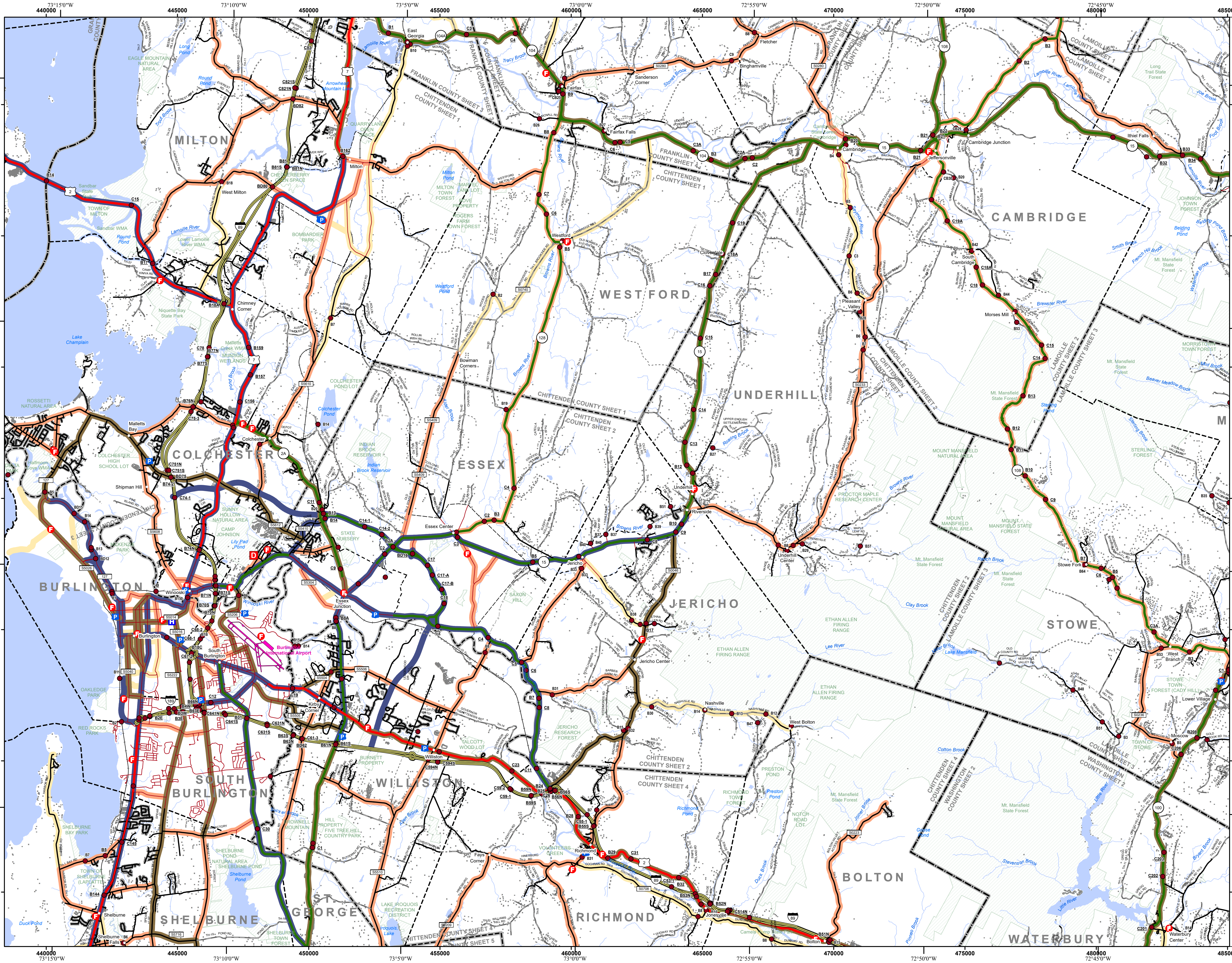


VERMONT COUNTY - TOWN MAP SERIES
CHITTENDEN COUNTY
SHEET 1 OF 5

Prepared by the
 Vermont Agency of Transportation
 Mapping Section
 in cooperation with
 U.S. Department of Transportation
 Federal Highway Administration
 September 2018

0 1 2 Miles
 Scale: 1:63,360 (printed size: 36 x 24 inches)

Contact information: Vermont Agency of Transportation
 Division of Policy, Planning and Intermodal Development, Mapping Section
 1 National Life Drive, Montpelier, VT 05633-5001
 Telephone: 802-828-2600
 This map was funded in part through grants from the Federal Highway Administration, U.S. Department of Transportation. The representation of the authors expressed herein do not necessarily state or reflect those of the U. S. Department of Transportation.

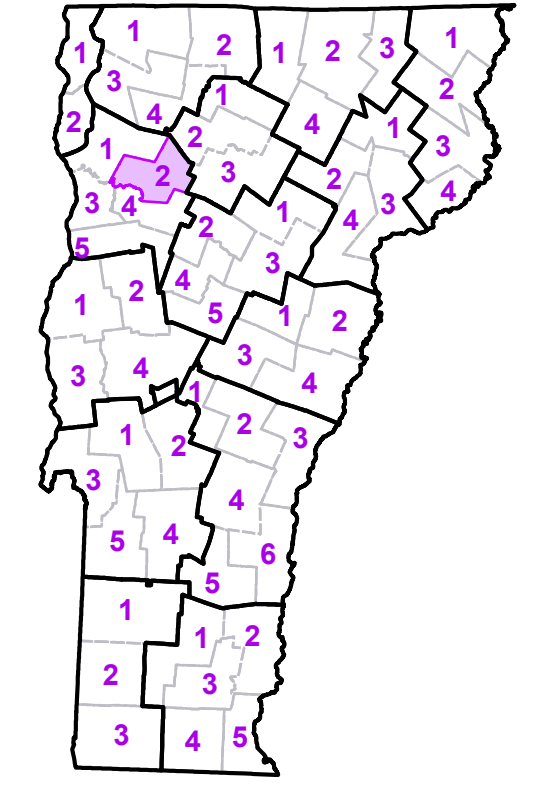


	Interstate
	U.S. Route
	Vermont Route
	Town Highway
	Interstate
	US Route Divided
	US Route
	State Route Paved
	State Route Unpaved
	Town Highway Paved
	Town Highway Unpaved
	Unimproved or Impassible
	Discontinued Highway
	Town Legal Trail
	Winter Road Closure
	Railroad
	Federal Aid Route
	Principal Arterial
	Minor Arterial
	Major Collector
	Minor Collector-not Federal Aid eligible
	VTrans Maintenance District Office
	Emergency Response Site
	Fire Station
	Law Enforcement
	Hospital
	Building
	Localities
	State Capital (Montpelier)
	Bridge or Culvert
	Water Body
	Stream or Brook
	Public Airport
	State Boundary
	County Boundary
	Town Boundary
	Village Boundary
	Urban Compact Boundary
	Public Land - State/Municipal
	Green Mountain National Forest
	County Subtle

TOWN
Bolton
Burlington City
Cambridge
Cambridge Village
Colchester
Essex
Essex Center U.C.
Essex Junction Village
Fairfax
Fletcher
Georgia
Grand Isle
Hinesburg
Jeffersonville Village
Jericho
Jericho Village
Johnson
Johnson Village
Milton
Milton U.C.
Morristown
Richmond
Shelburne
South Burlington City
South Hero
St. George
Stowe
Underhill
Waterbury
Waterville
Westford
Williston
Winooski City

B20 / C20 State Bridge or Culvert Identifier
 B20 / C20 Town Bridge or Culvert Identifier

Vermont State Plane Coordinate System
 North American Datum of 1983
 SPCS Zone Identifier: 4400
 Geodetic Reference System 80
 5,000-meter grid, Easting - Northing

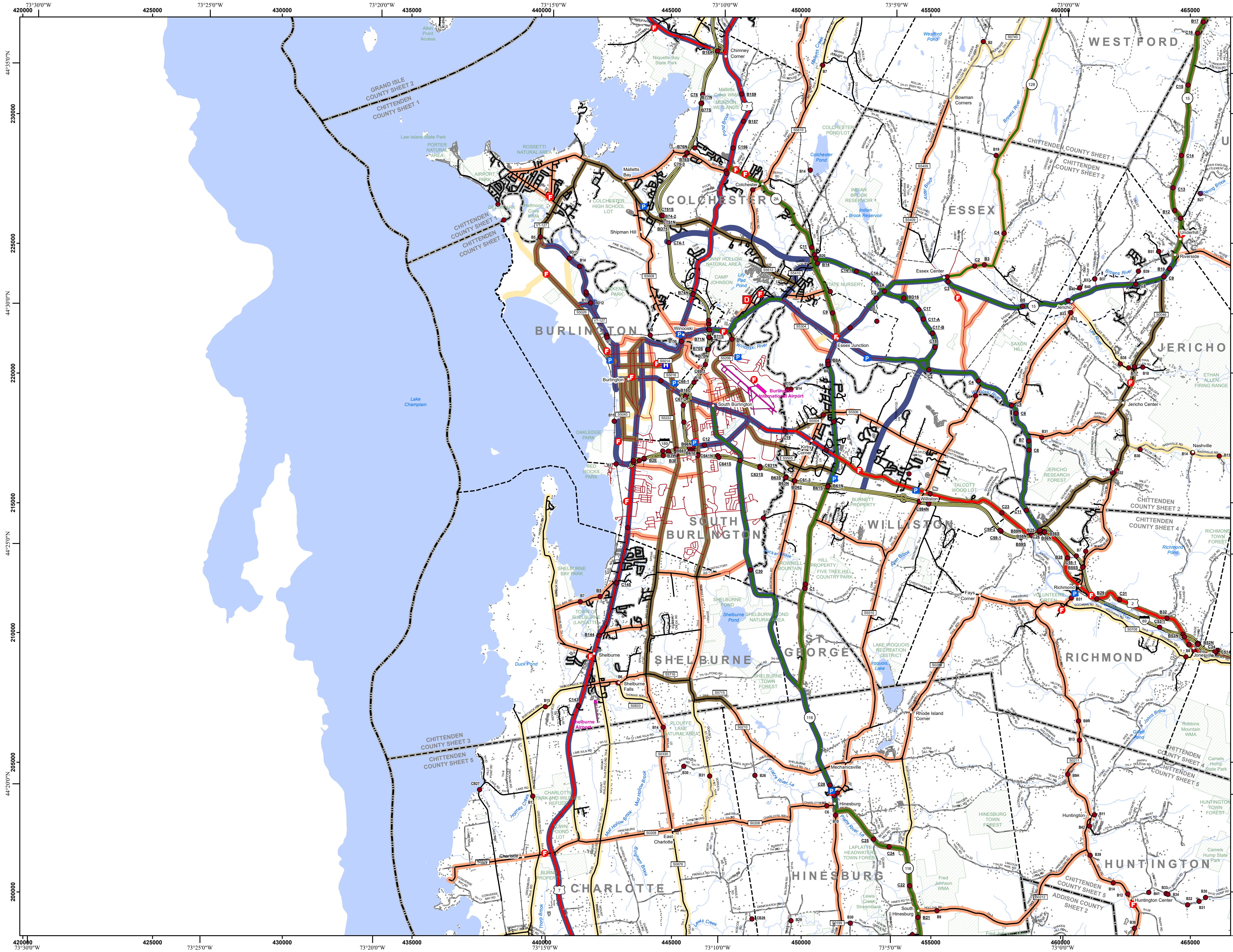


VERMONT COUNTY - TOWN MAP SERIES
CHITTENDEN COUNTY
SHEET 2 OF 5

Prepared by the
Vermont Agency of Transportation Mapping Section
 in cooperation with
U.S. Department of Transportation Federal Highway Administration
 September 2018

Scale: 1:63,360 (printed size: 36 x 24 inches)

Contact information: Vermont Agency of Transportation
 Division of Policy, Planning and Intermodal Development, Mapping Section
 1 National Life Drive, Montpelier, VT 05633-5001
 Telephone: 802-828-2600
 This map was funded in part through grants from the Federal Highway Administration, U.S. Department of Transportation. The representation of the authors expressed herein do not necessarily state or reflect those of the U.S. Department of Transportation.

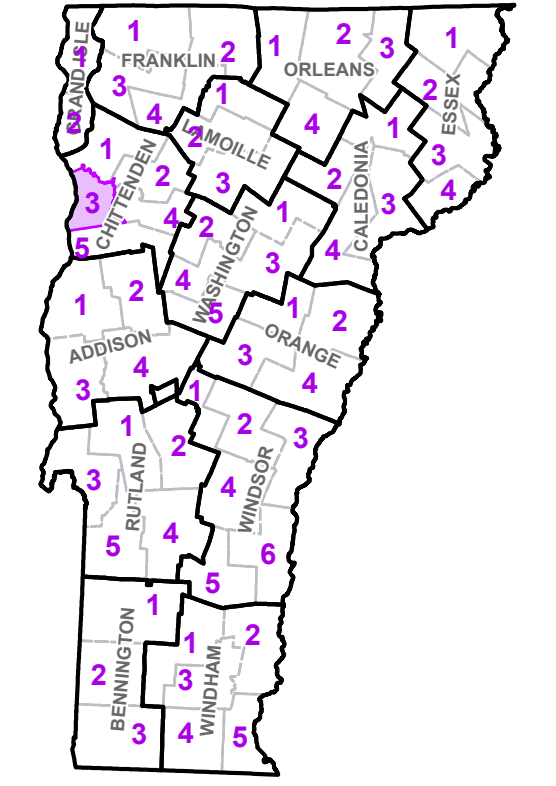


- Interstate
 - U.S. Route
 - Vermont Route
 - Town Highway
 - Interstate
 - US Route Divided
 - US Route
 - State Route Paved
 - State Route Unpaved
 - Town Highway Paved
 - Town Highway Unpaved
 - Unimproved or Impassible
 - Discontinued Highway
 - Town Legal Trail
 - Winter Road Closure
 - Railroad
- Federal Aid Route**
- Principal Arterial
 - Minor Arterial
 - Major Collector
 - Minor Collector-not Federal Aid eligible
- Emergency Response Site**
- Fire Station
 - Law Enforcement
 - Hospital
 - Building
 - Localities
 - State Capital (Montpelier)
 - Bridge or Culvert
 - Water Body
 - Stream or Brook
 - Public Airport
- State Boundary
 - County Boundary
 - Town Boundary
 - Village Boundary
 - Urban Compact Boundary
 - Public Land - State/Municipal
 - Green Mountain National Forest
 - County Subtle

TOWN
Bolton
Burlington City
Charlotte
Colchester
Essex
Essex Junction U.C.
Essex Junction Village
Hinesburg
Huntington
Jericho
Jericho Village
Milton
Richmond
Shelburne
South Burlington City
South Hero
St. George
Starksboro
Underhill
Westford
Williston
Winooski City

- B20 / C20 State Bridge or Culvert Identifier
- B20 / C20 Town Bridge or Culvert Identifier

Vermont State Plane Coordinate System
 North American Datum of 1983
 SPCS Zone Identifier: 4400
 Geodetic Reference System 80
 5,000-meter grid, Easting - Northing



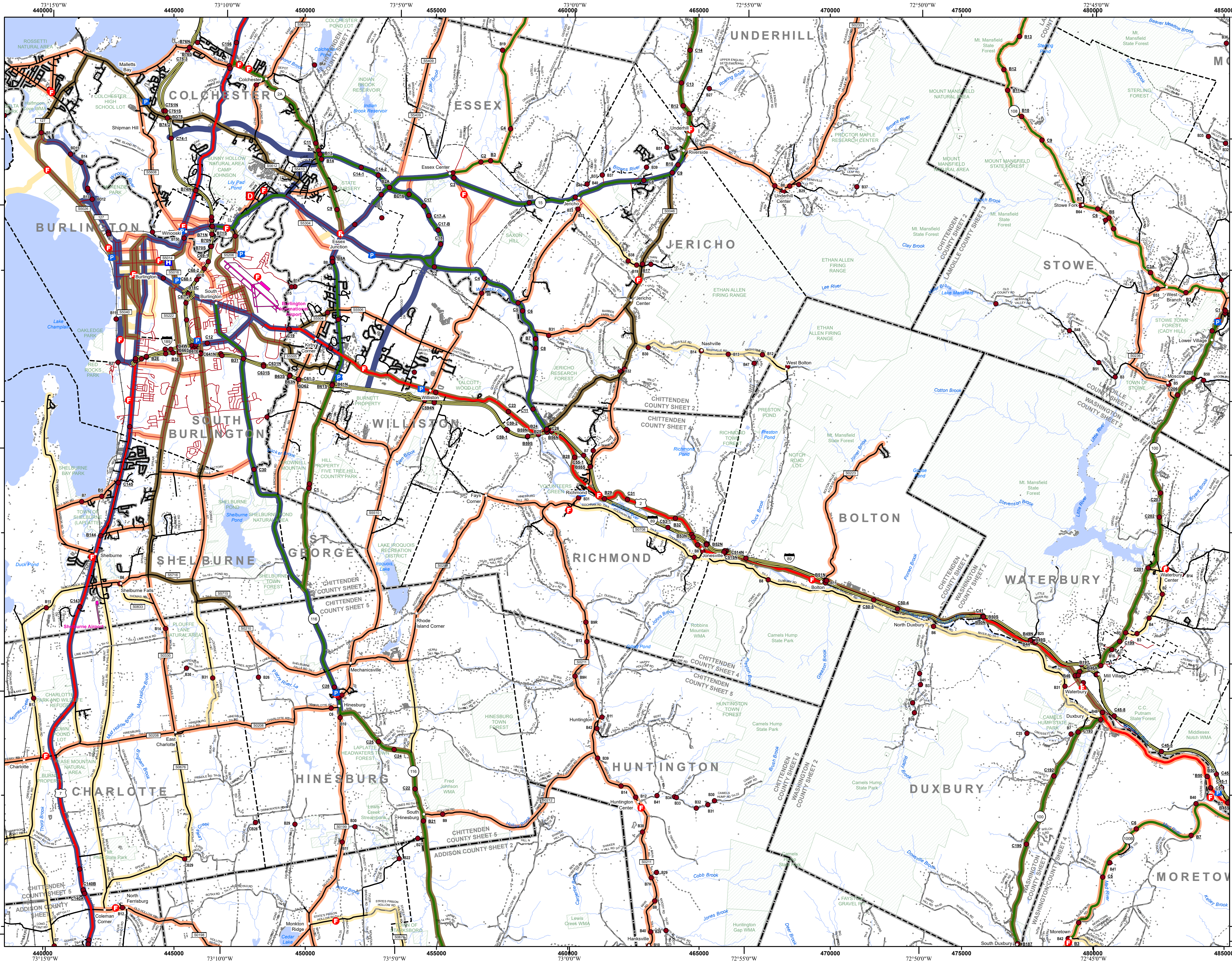
VERMONT COUNTY - TOWN MAP SERIES
CHITTENDEN COUNTY SHEET 3 OF 5

Prepared by the
Vermont Agency of Transportation Mapping Section
 in cooperation with
U.S. Department of Transportation Federal Highway Administration
 September 2018

Scale: 1:63,360 (printed size: 36 x 24 inches)

Contact information: Vermont Agency of Transportation
 Division of Policy, Planning and Intermodal Development, Mapping Section
 1 National Life Drive, Montpelier, VT 05633-5001
 Telephone: 802-828-2600

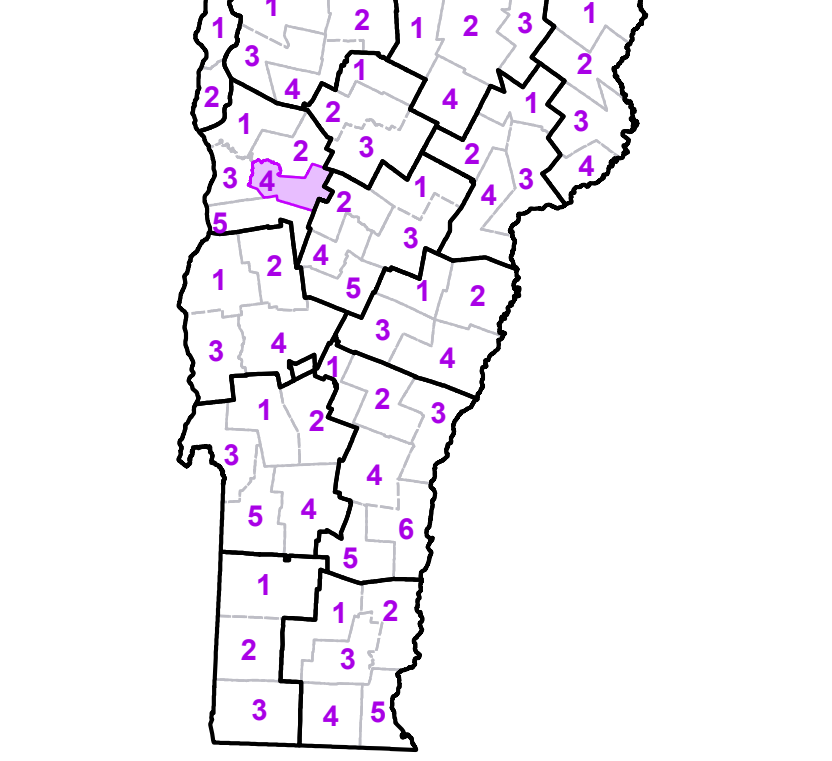
This map was funded in part through grants from the Federal Highway Administration, U.S. Department of Transportation. The representation of the authors expressed herein do not necessarily state or reflect those of the U. S. Department of Transportation.



TOWN	
Bolton	
Burlington City	
Cambridge	
Charlotte	
Colchester	
Duxbury	
Essex	
Essex Center U.C.	
Essex Junction Village	
Fayston	
Ferrisburgh	
Hinesburg	
Huntington	
Jericho	
Jericho Village	
Middlesex	
Monkton	
Moretown	
Morristown	
Richmond	
Shelburne	
South Burlington City	
St. George	
Starksboro	
Stowe	
Underhill	
Waterbury	
Waterbury	
Waterbury	
Waterbury Village	
Westford	
Williston	
Winooski City	

- Emergency Response Site**
- Fire Station
- Law Enforcement
- Hospital
- Building
- Localities
- State Capital (Montpelier)
- Bridge or Culvert
- Water Body
- Stream or Brook
- Public Airport

State Boundary
 County Boundary
 Town Boundary
 Village Boundary
 Urban Compact Boundary
 Public Land - State/Municipal
 Green Mountain National Forest
 County Subtle



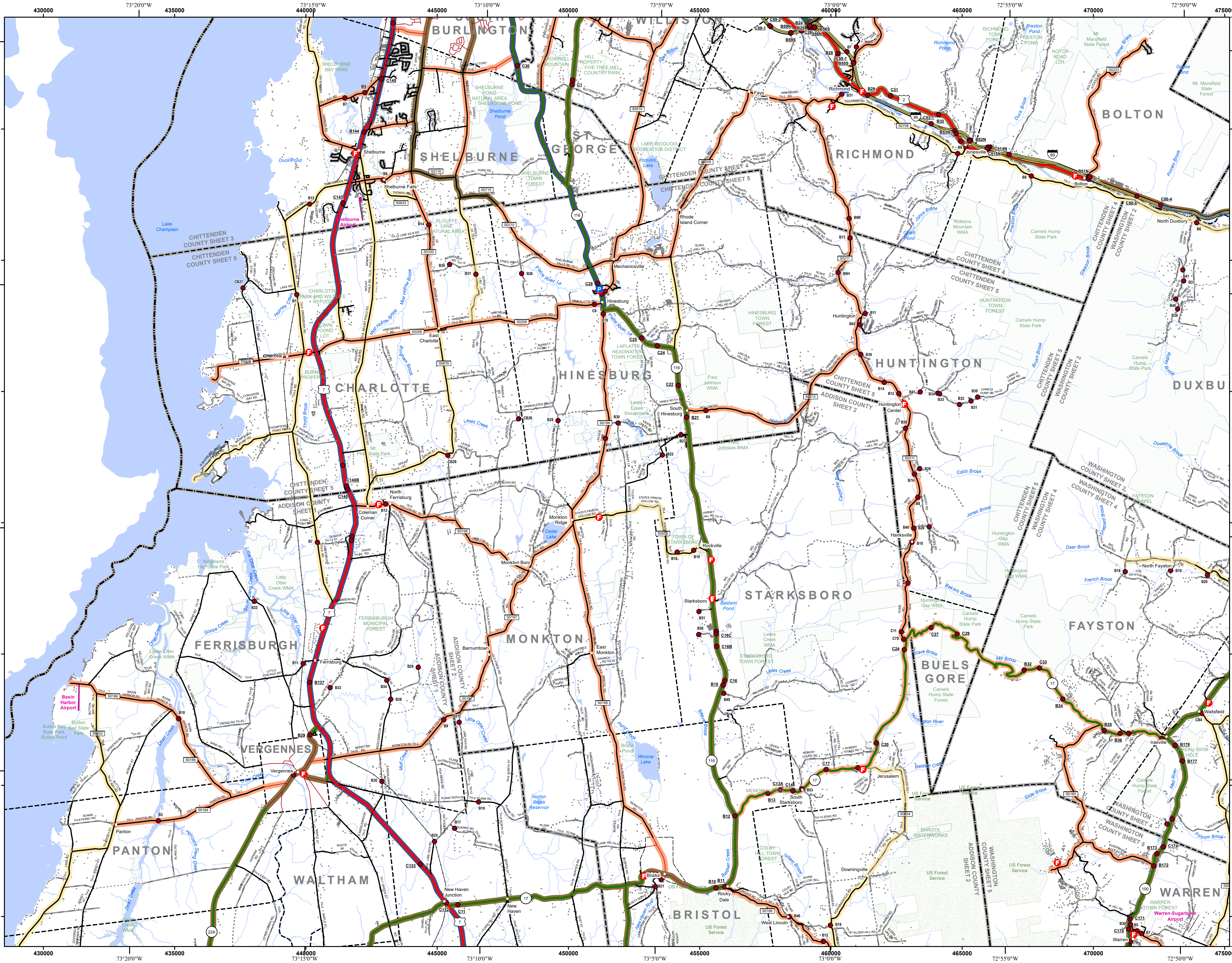
VERMONT COUNTY - TOWN MAP SERIES
CHITTENDEN COUNTY
SHEET 4 OF 5

Prepared by the
Vermont Agency of Transportation
 Mapping Section
 in cooperation with
U.S. Department of Transportation
 Federal Highway Administration
 September 2018

Scale: 1:63,360 (printed size: 36 x 24 inches)

Contact information: Vermont Agency of Transportation
 Division of Policy, Planning and Intermodal Development, Mapping Section
 1 National Life Drive, Montpelier, VT 05633-5001
 telephone: 802-828-2600

This map was funded in part through grants from the Federal Highway Administration, U.S. Department of Transportation. The representation of the authors expressed herein does not necessarily state or reflect those of the U.S. Department of Transportation.



TOWN	
Addison	
Bolton	
Bristol	
Bristol U.C.	
Buels Gore	
Charlotte	
Duxbury	
Fayston	
Ferrisburgh	
Hinesburg	
Huntington	
Lincoln	
Monkton	
New Haven	
Panton	
Richmond	
Shelburne	
South Burlington City	
St. George	
Starksboro	
Vergennes City	
Waitsfield	
Waltham	
Warren	
Waterbury	
Williston	

- Interstate
- U.S. Route
- Vermont Route
- Town Highway
- Interstate
- US Route Divided
- US Route
- State Route Paved
- State Route Unpaved
- Town Highway Paved
- Town Highway Unpaved
- Unimproved or Impassible
- Discontinued Highway
- Town Legal Trail
- Winter Road Closure
- Railroad

Federal Aid Route

- Principal Arterial
- Minor Arterial
- Major Collector
- Minor Collector-not Federal Aid eligible

- VTrans Maintenance District Office
- Emergency Response Site
- Fire Station
- Law Enforcement
- Hospital
- Building
- Localities
- State Capital (Montpelier)
- Bridge or Culvert
- Water Body
- Stream or Brook
- Public Airport

- State Boundary
- County Boundary
- Town Boundary
- Village Boundary
- Urban Compact Boundary
- Public Land - State/Municipal
- Green Mountain National Forest
- County Subtitle

B20 / C20 State Bridge or Culvert Identifier
 B20 / C20 Town Bridge or Culvert Identifier

Vermont State Plane Coordinate System
 North American Datum of 1983
 SPCS Zone Identifier: 4400
 Geodetic Reference System 80
 5,000-meter grid, Easting - Northing



VERMONT COUNTY - TOWN MAP SERIES
CHITTENDEN COUNTY
SHEET 5 OF 5

Prepared by the
Vermont Agency of Transportation
 Mapping Section
 in cooperation with
U.S. Department of Transportation
 Federal Highway Administration
 September 2018

Scale: 1:63,360 (printed size: 36 x 24 inches)

Contact information: Vermont Agency of Transportation
 Division of Policy, Planning and Intermodal Development, Mapping Section
 National Life Drive, Montpelier, VT 05633-5001
 telephone: 802-828-2600

This map was funded in part through grants from the Federal Highway Administration, U.S. Department of Transportation. The representation of the authors expressed herein do not necessarily state or reflect those of the U.S. Department of Transportation.