

TOWN	
Andover	
Arlington	
Arlington U.C.	
Danby	
Dorset	
Jamaica	
Landgrove	
Londonderry	
Ludlow	
Manchester	
Manchester Center Depot U.C.	
Manchester Village	
Mount Holly	
Mount Tabor	
Pawlet	
Peru	
Rupert	
Sandgate	
Stratton	
Sunderland	
Weston	
Winham	
Winhall	

**Emergency Response Site**

- Fire Station
- Law Enforcement
- Hospital
- Localities
- State Capital (Montpelier)
- Bridge or Culvert
- Water Body
- Stream or Brook
- Public Airport

**Federal Aid Route**

- Principal Arterial
- Minor Arterial
- Major Collector
- Minor Collector-not Federal Aid eligible
- VTrans Maintenance District Office

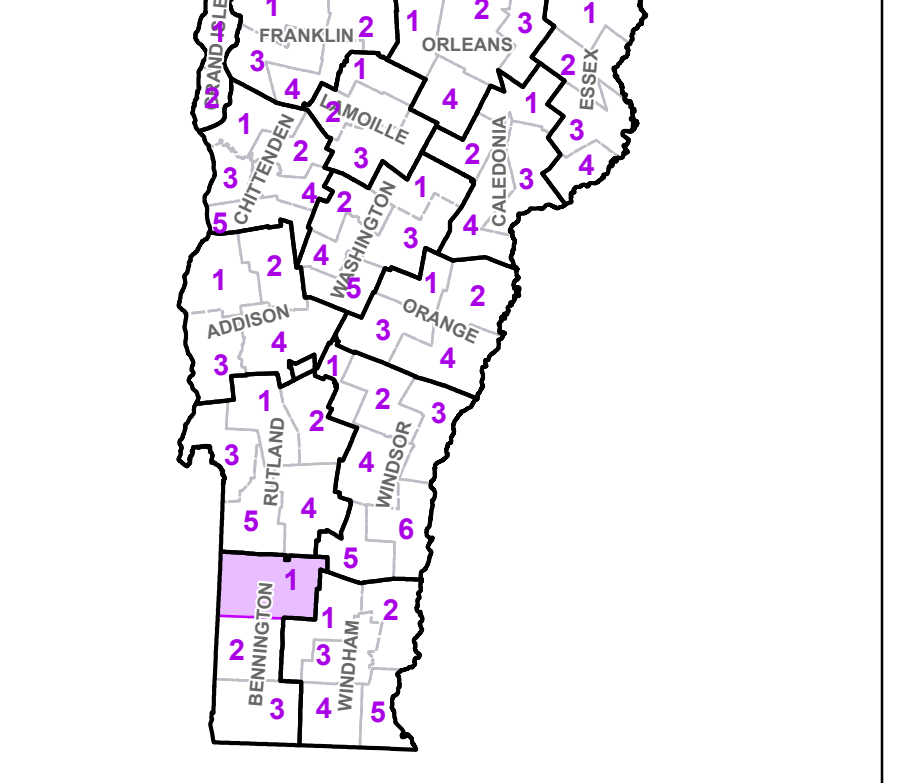
**Other Symbols**

- Interstate
- U.S. Route
- Vermont Route
- Town Highway
- Interstate
- US Route Divided
- US Route
- State Route Paved
- State Route Unpaved
- Town Highway Paved
- Town Highway Unpaved
- Unimproved or Impassible
- Discontinued Highway
- Town Legal Trail
- Winter Road Closure
- Railroad

**Boundaries**

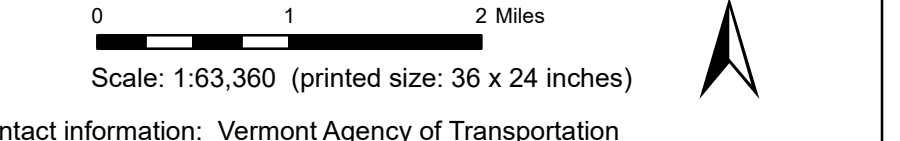
- State Boundary
- County Boundary
- Village Boundary
- Urban Compact Boundary
- Public Land - State/Municipal
- Green Mountain National Forest
- County Subtle

Vermont State Plane Coordinate System  
 North American Datum of 1983  
 SPCS Zone Identifier: 4400  
 Geodetic Reference System 80  
 5,000-meter grid, Easting - Northing



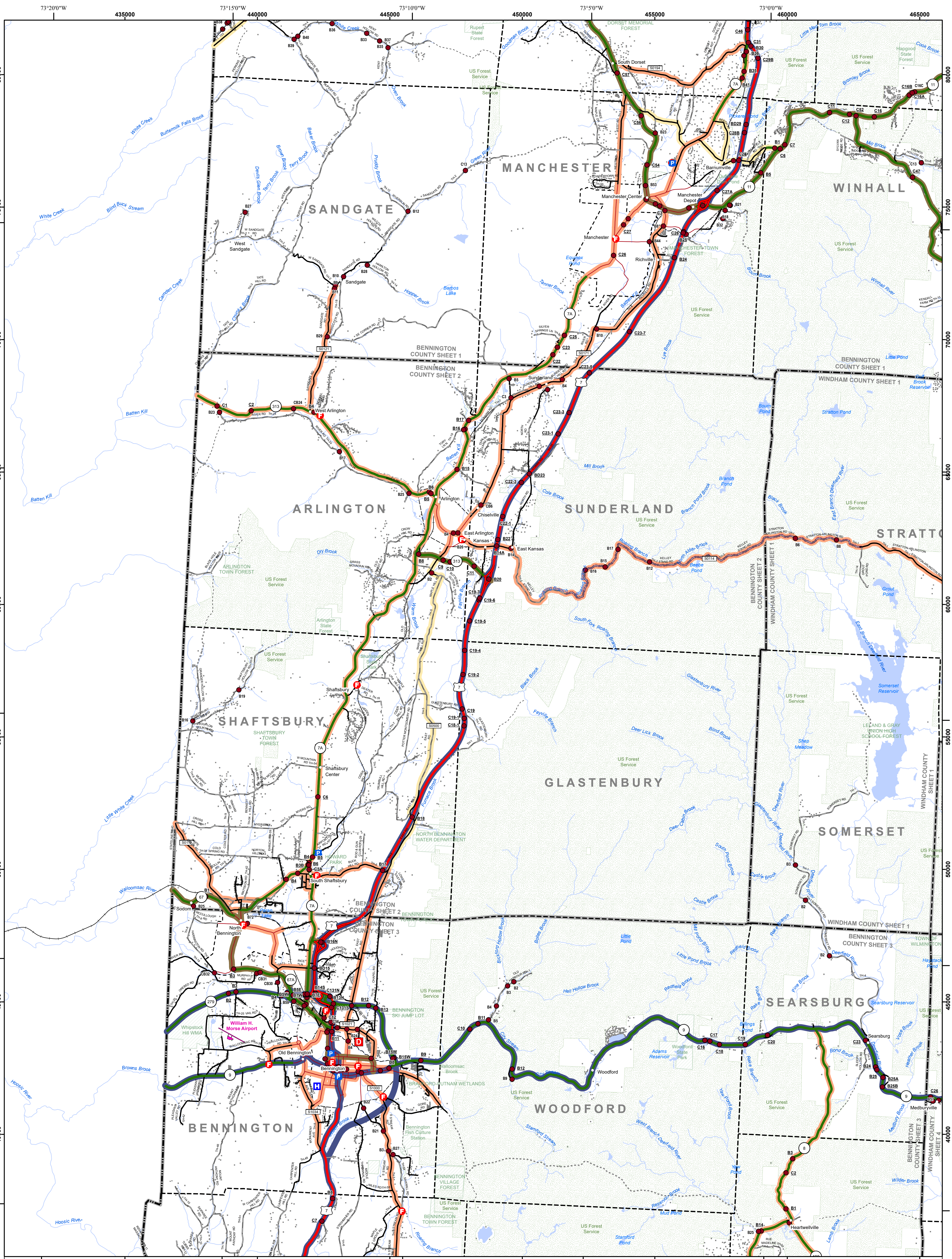
**VERMONT COUNTY - TOWN MAP SERIES**  
**BENNINGTON COUNTY**  
**SHEET 1 OF 3**

Prepared by the  
 Vermont Agency of Transportation  
 Mapping Section  
 in cooperation with  
 U.S. Department of Transportation  
 Federal Highway Administration  
 September 2018

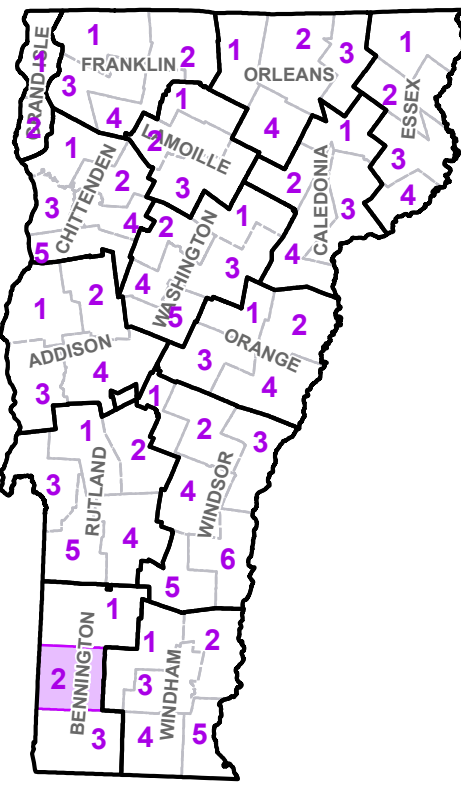


Contact information: Vermont Agency of Transportation  
 Division of Policy, Planning and Intermodal Development, Mapping Section  
 1 National Life Drive, Montpelier, VT 05633-5001  
 Telephone: 802-828-2600

This map was funded in part through grants from the Federal Highway Administration, U.S. Department of Transportation. The representation of the authors expressed herein do not necessarily state or reflect those of the U. S. Department of Transportation.

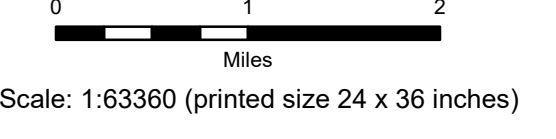


TOWN	TOWN	TOWN
Arlington	Peru	Wilmington
Arlington U.C.	Pownal	Winhall
Bennington	Readsboro	Woodford
Bennington U.C.	Rupert	
Dorset	Sandgate	
Dover	Searsburg	
Glastenbury	Shaftsbury	
Manchester	Somerset	
Manchester Center Depot U.C.	Stamford	
Manchester Village	Stratton	
North Bennington Village	Sunderland	
Old Bennington Village	Whitingham	



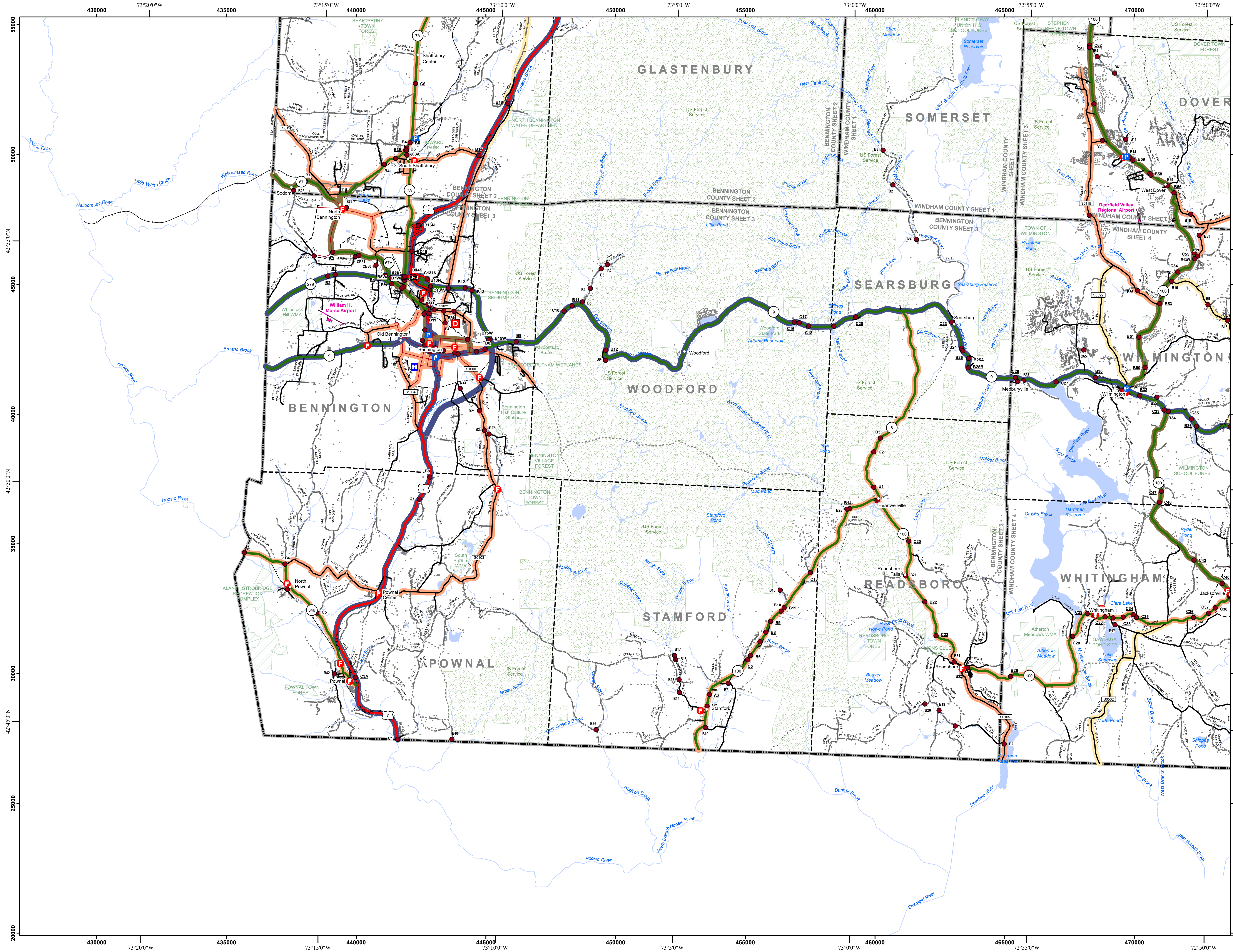
**VERMONT COUNTY - TOWN MAP SERIES**  
**BENNINGTON COUNTY**  
**SHEET 2 OF 3**

Prepared by the  
**Vermont Agency of Transportation**  
 Mapping Section  
 in cooperation with  
**U.S. Department of Transportation**  
 Federal Highway Administration  
 September 2018



Contact Information: Vermont Agency of Transportation  
 Division of Policy, Planning and Intermodal Development, Mapping Section  
 1 National Life Drive, Montpelier, VT 05633-5001, Telephone: 802-828-2600

This map was funded in part through grants from the Federal Highway Administration, U.S. Department of Transportation. The representation of the authors expressed herein do not necessarily state or reflect those of the U. S. Department of Transportation.

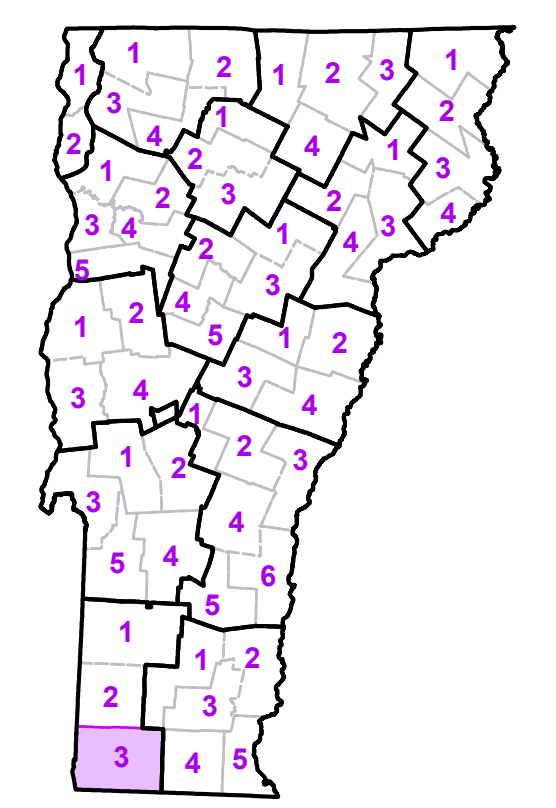


- Interstate
  - U.S. Route
  - Vermont Route
  - Town Highway
  - Interstate
  - US Route Divided
  - US Route
  - State Route Paved
  - State Route Unpaved
  - Town Highway Paved
  - Town Highway Unpaved
  - Unimproved or Impassible
  - Discontinued Highway
  - Town Legal Trail
  - Winter Road Closure
  - Railroad
- Federal Aid Route**
- Principal Arterial
  - Minor Arterial
  - Major Collector
  - Minor Collector-not Federal Aid eligible
- VTrans Maintenance District Office**
- VTrans Maintenance District Office
- Emergency Response Site**
- Fire Station
  - Law Enforcement
  - Hospital
  - Building
  - Localities
  - State Capital (Montpelier)
  - Bridge or Culvert
  - Water Body
  - Stream or Brook
  - Public Airport
- Boundaries**
- State Boundary
  - County Boundary
  - Town Boundary
  - Village Boundary
  - Urban Compact Boundary
  - Public Land - State/Municipal
  - Green Mountain National Forest
  - County Subtle

TOWN
Bennington
Bennington U.C.
Dover
Glasterbury
Jacksonville Village
North Bennington Village
Old Bennington Village
Pownal
Readsboro
Searsburg
Shaftsbury
Somerset
Stamford
Stratton
Wardsboro
Whitingham
Wilmington
Woodford

- B20 / C20 State Bridge or Culvert Identifier**
- B20 / C20 Town Bridge or Culvert Identifier**

Vermont State Plane Coordinate System  
 North American Datum of 1983  
 SPCS\_Zone\_Identifier: 4400  
 Geodetic Reference System 80  
 5,000-meter grid, Easting - Northing



**VERMONT COUNTY - TOWN MAP SERIES**  
**BENNINGTON COUNTY**  
**SHEET 3 OF 3**

Prepared by the  
**Vermont Agency of Transportation**  
 Mapping Section  
 in cooperation with  
**U.S. Department of Transportation**  
 Federal Highway Administration  
 September 2018



Contact information: Vermont Agency of Transportation  
 Division of Policy, Planning and Intermodal Development, Mapping Section  
 1 National Life Drive, Montpelier, VT 05633-5001  
 Telephone: 802-828-2600

This map was funded in part through grants from the Federal Highway Administration, U.S. Department of Transportation. The representation of the authors expressed herein does not necessarily state or reflect those of the U.S. Department of Transportation.