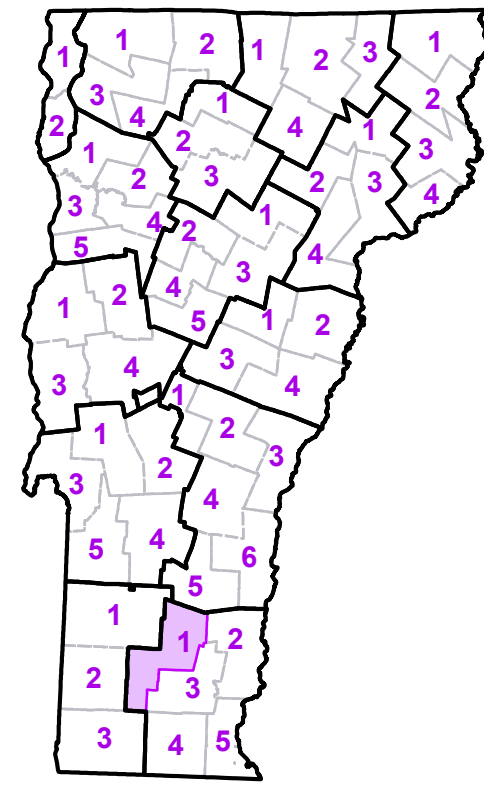


- Interstate
- U.S. Route
- Vermont Route
- Minor Arterial or Collector
- State Route Paved
- State Route Unpaved
- Town Highway Paved
- Town Highway Unpaved
- Unimproved or Impassible
- Discontinued Highway
- Town Legal Trail
- Winter Road Closure
- Railroad

- Federal Aid Route**
- Principal Arterial
 - Minor Arterial
 - Major Collector
 - Minor Collector-not Federal Aid eligible
- Emergency Response Site**
- Fire Station
 - Law Enforcement
 - Hospital
 - Building
 - Localities
 - State Capital (Montpelier)
 - Bridge or Culvert
 - Stream or Brook
 - Public Airport

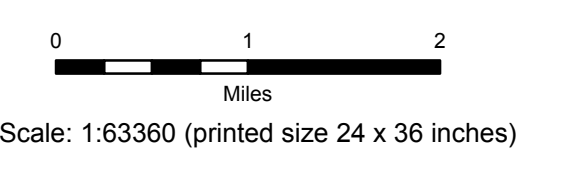
- Political Boundary**
- State Boundary
 - County Boundary
 - Town Boundary
 - Village Boundary
 - Urban Compact Boundary
 - Public Land - State/Municipal
 - Green Mountain National Forest
 - County Subtle
- B20 / C20 State Bridge or Culvert Identifier**
B20 / C20 Town Bridge or Culvert Identifier
- Vermont State Plane Coordinate System
 North American Datum of 1983
 SPCS Zone Identifier: 4400
 Geodetic Reference System 80
 5,000-meter grid, Easting - Northing

TOWN	TOWN	TOWN
Andover	Londonderry	Sunderland
Athens	Manchester	Townshend
Battleboro	Manchester Center Depot U.C.	Townshend Village
Brookline	Manchester Village	Wardsboro
Chester	Marlboro	Weston
Dorset	Mount Tabor	Wilmington
Dover	Newfane	Windham
Dummerston	Newfane Village	Winhall
Glastenbury	Peru	Woodford
Grafton	Searsburg	
Jamaica	Somerset	
Landgrove	Stratton	



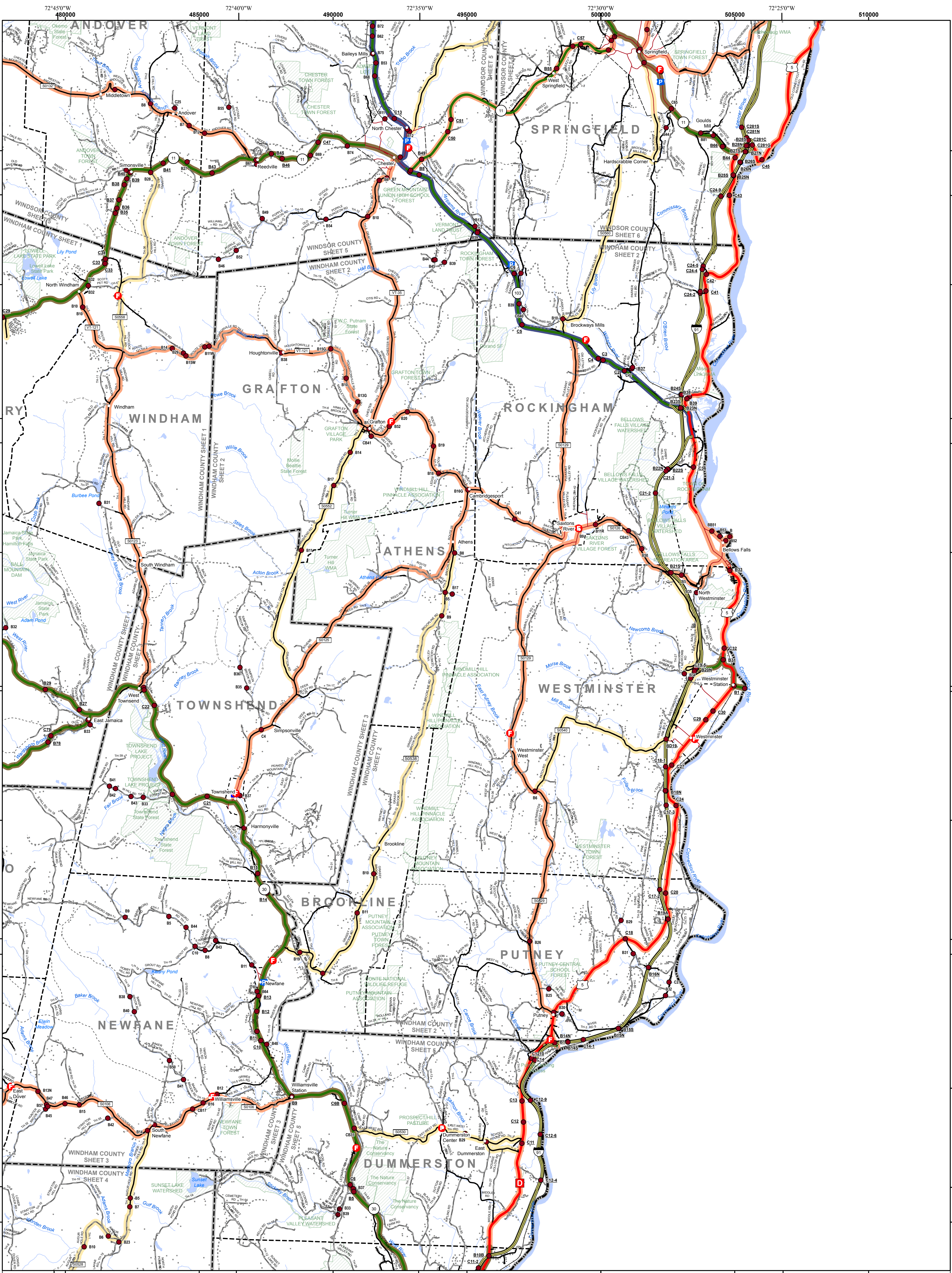
WINDHAM COUNTY - TOWN MAP SERIES
WINDHAM COUNTY
SHEET 1 OF 5

Prepared by the
 Vermont Agency of Transportation
 Mapping Section
 in cooperation with
 U.S. Department of Transportation
 Federal Highway Administration
 October 2017



Contact Information: Vermont Agency of Transportation
 Division of Policy, Planning and Intermodal Development, Mapping Section
 1 National Life Drive, Montpelier, VT 05633-5001, Telephone: 802-828-2600

This map was funded in part through grants from the Federal Highway Administration, U.S. Department of Transportation. The representation of the authors expressed herein do not necessarily state or reflect those of the U.S. Department of Transportation.



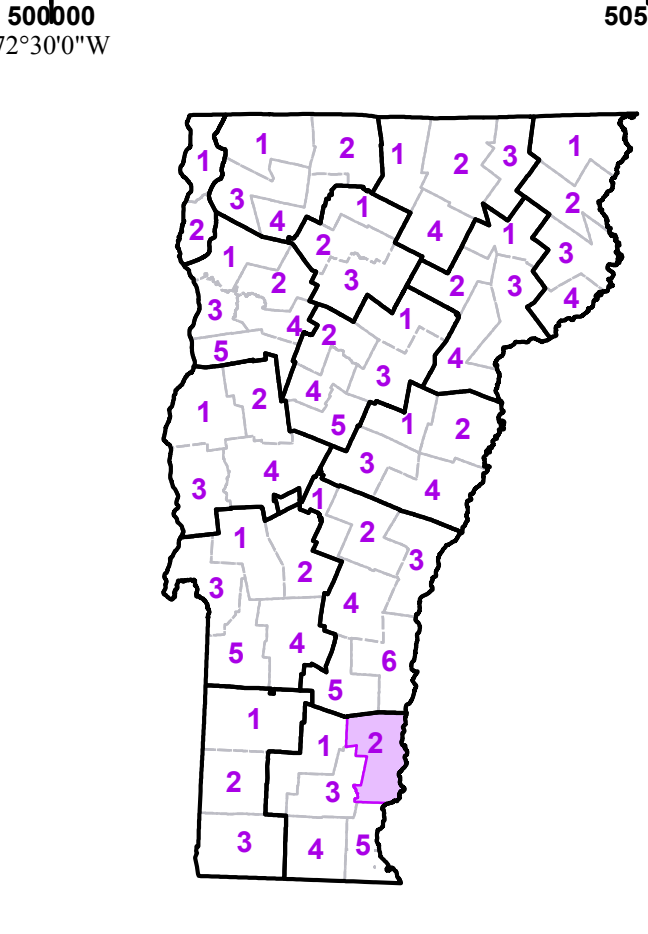
- Interstate
- U.S. Route
- Vermont Route
- Minor Arterial or Collector
- State Route Paved
- State Route Unpaved
- Town Highway Paved
- Town Highway Unpaved
- Unimproved or Impassible
- Discontinued Highway
- Town Legal Trail
- Winter Road Closure
- Railroad

- Federal Aid Route**
- Principal Arterial
- Minor Arterial
- Major Collector
- Minor Collector-not Federal Aid eligible
- VTrans Maintenance District Office
- Emergency Response Site**
- Fire Station
- Law Enforcement
- Hospital
- Building
- Localities
- State Capital (Montpelier)
- Bridge or Culvert
- Water Body
- Stream or Brook
- Public Airport

- Political Boundary**
- State Boundary
- County Boundary
- Town Boundary
- Village Boundary
- Urban Compact Boundary
- Public Land - State/Municipal
- Green Mountain National Forest
- County Subtle
- B20 / C20 State Bridge or Culvert Identifier**
- B20 / C20 Town Bridge or Culvert Identifier**

Vermont State Plane Coordinate System
 North American Datum of 1983
 SPCS Zone Identifier: 4400
 Geocentric Reference System 80
 5,000-meter grid, Easting - Northing

TOWN	TOWN	TOWN
Andover	Marlboro	Westminster Village
Athens	Newfane	Weston
Bellows Falls Village	Newfane Village	Windham
Brattleboro	Putney	
Brookline	Rockingham	
Chester	Saxtons River Village	
Chester-Chester Depot U.C.	Springfield	
Dover	Springfield U.C.	
Dummerston	Townshend	
Grafton	Townshend Village	
Jamaica	Wardsboro	
Londonderry	Westminster	



VERMONT COUNTY - TOWN MAP SERIES
WINDHAM COUNTY
SHEET 2 OF 5

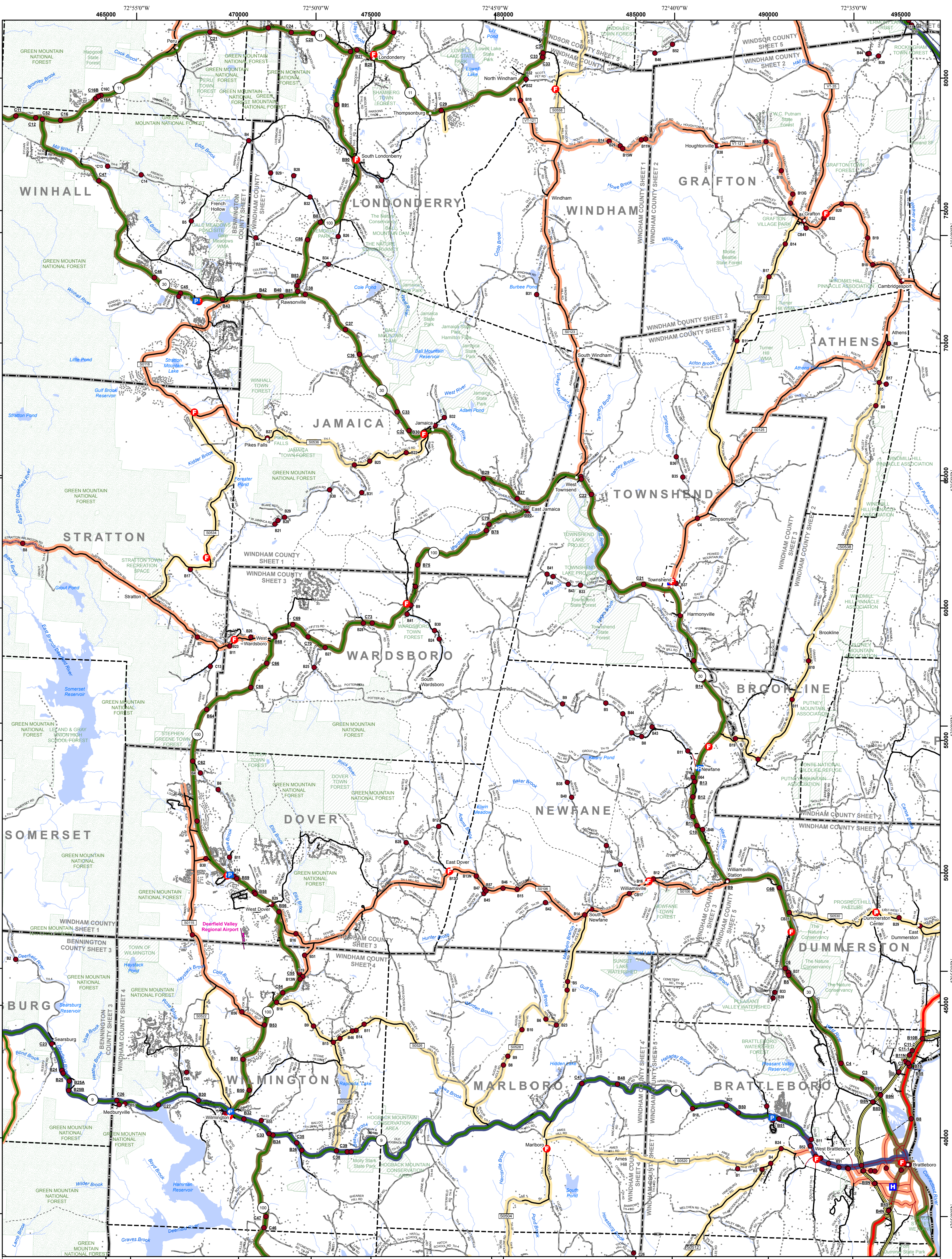
Prepared by the
 Vermont Agency of Transportation
 Mapping Section
 in cooperation with
 U.S. Department of Transportation
 Federal Highway Administration
 October 2017

0 1 2
 Miles

Scale: 1:63360 (printed size 24 x 36 inches)

Contact Information: Vermont Agency of Transportation
 Division of Policy, Planning and Intermodal Development, Mapping Section
 1 National Life Drive, Montpelier, VT 05633-5001, Telephone: 802-828-2600

This map was funded in part through grants from the Federal Highway Administration, U.S. Department of Transportation. The representation of the authors expressed herein do not necessarily state or reflect those of the U.S. Department of Transportation.

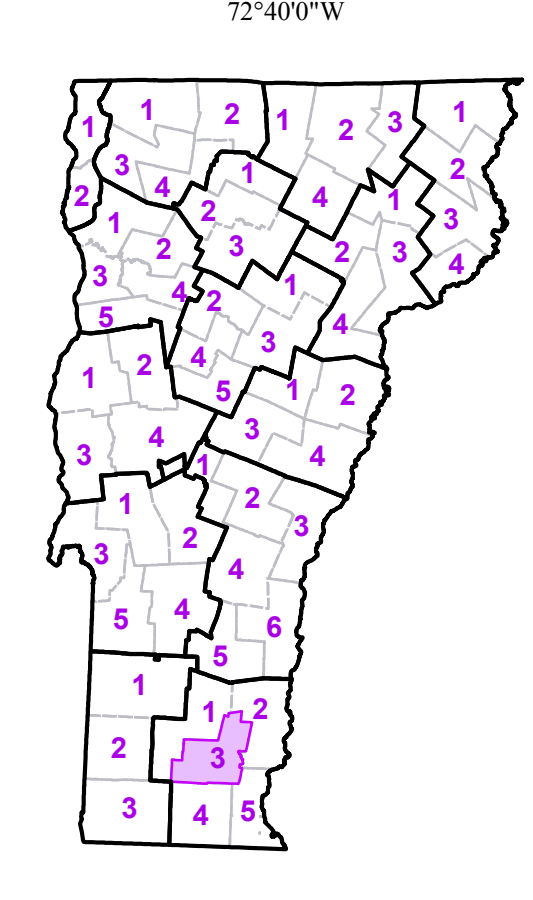


- Interstate
- U.S. Route
- Vermont Route
- Minor Arterial or Collector
- State Route Paved
- State Route Unpaved
- Town Highway Paved
- Town Highway Unpaved
- Unimproved or Impassible
- Discontinued Highway
- Town Legal Trail
- Winter Road Closure
- Railroad

- Federal Aid Route**
- Principal Arterial
- Minor Arterial
- Major Collector
- Minor Collector-not Federal Aid eligible
- VTrans Maintenance District Office
- Emergency Response Site**
- Fire Station
- Law Enforcement
- Hospital
- Building
- Localities
- State Capital (Montpelier)
- Bridge or Culvert
- Water Body
- Stream or Brook
- Public Airport

- Political Boundary**
 - State Boundary
 - County Boundary
 - Town Boundary
 - Village Boundary
 - Urban Compact Boundary
 - Public Land - State/Municipal
 - Green Mountain National Forest
 - County Subtle
- B20 / C20 State Bridge or Culvert Identifier**
B20 / C20 Town Bridge or Culvert Identifier

TOWN	TOWN	TOWN
Andover	Halifax	Somerset
Athens	Jamaica	Springfield
Brattleboro	Landgrove	Stratton
Brattleboro-W. Brattleboro U.C.	Londonderry	Townshend
Brattleboro-W. Brattleboro U.C.	Marlboro	Townshend Village
Brookline	Newfane	Vernon
Chester	Newfane Village	Wardsboro
Dorset	Peru	Westminster
Dover	Putney	Whitingham
Dummerston	Readsboro	Wilmington
Grafton	Rockingham	Windham
Guilford	Searsburg	Winhall



VERMONT COUNTY - TOWN MAP SERIES
WINDHAM COUNTY
SHEET 3 OF 5

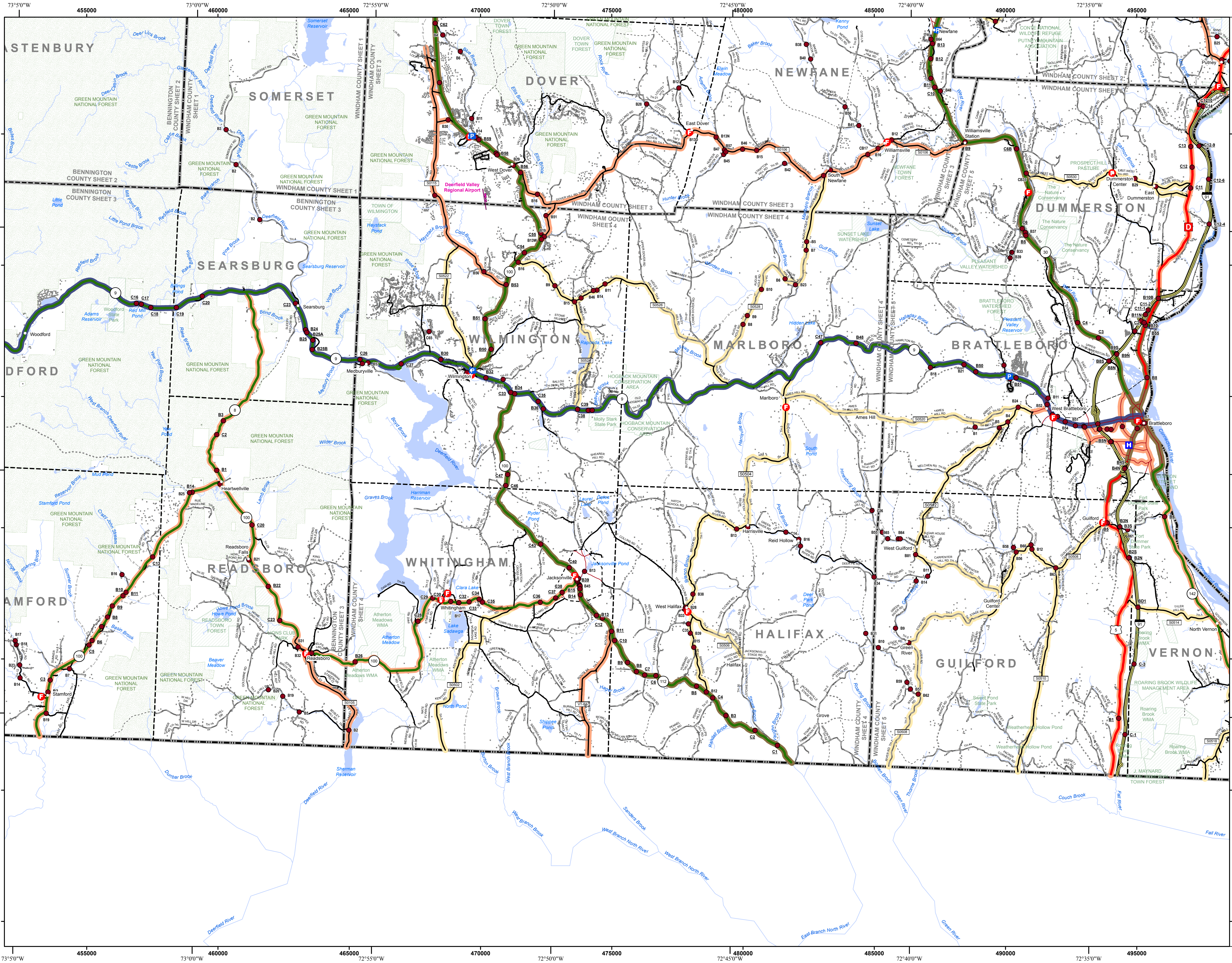
Prepared by the
Vermont Agency of Transportation
 Mapping Section
 in cooperation with
U.S. Department of Transportation
 Federal Highway Administration
 October 2017

Scale: 1:63360 (printed size 24 x 36 inches)

0 1 2
 Miles

Contact Information: Vermont Agency of Transportation
 Division of Policy, Planning and Intermodal Development, Mapping Section
 1 National Life Drive, Montpelier, VT 05633-5001, Telephone: 802-828-2600

This map was funded in part through grants from the Federal Highway Administration, U.S. Department of Transportation. The representation of the authors expressed herein do not necessarily state or reflect those of the U.S. Department of Transportation.

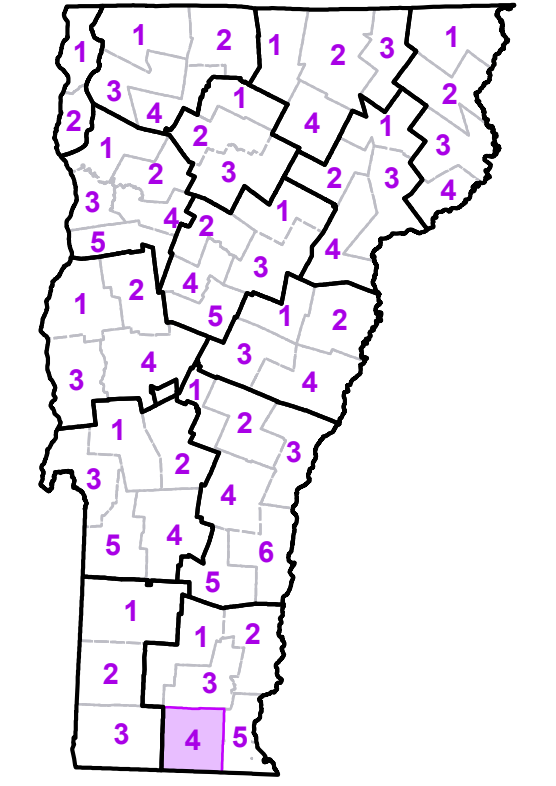


- Interstate
- U.S. Route
- Vermont Route
- Minor Arterial or Collector
- Interstate
- US Route Divided
- US Route
- State Route Paved
- State Route Unpaved
- Town Highway Paved
- Town Highway Unpaved
- Unimproved or Impassible
- Discontinued Highway
- Town Legal Trail
- Winter Road Closure
- Railroad
- Federal Aid Route**
- Principal Arterial
- Minor Arterial
- Major Collector
- Minor Collector-not Federal Aid eligible
- VTrans Maintenance District Office
- Emergency Response Site**
- Fire Station
- Law Enforcement
- Hospital
- Building
- Localities
- State Capital (Montpelier)
- Bridge or Culvert
- Water Body
- Stream or Brook
- Public Airport
- State Boundary
- County Boundary
- Town Boundary
- Village Boundary
- Urban Compact Boundary
- Public Land - State/Municipal
- Green Mountain National Forest
- County Subtle

TOWN	
Brattleboro	
Brattleboro-W. Brattleboro U.C.	
Brookline	
Dover	
Dummerston	
Glastenbury	
Guilford	
Halifax	
Jacksonville Village	
Marlboro	
Newfane	
Newfane Village	
Putney	
Readsboro	
Searsburg	
Somers	
Stamford	
Vernon	
Wardsboro	
Whitingham	
Wilmington	
Woodford	

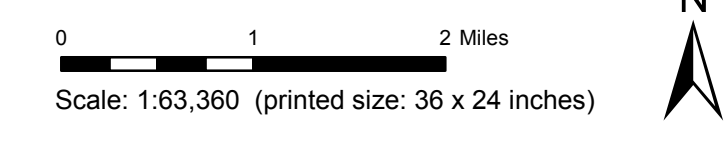
B20 / C20 State Bridge or Culvert Identifier
 B20 / C20 Town Bridge or Culvert Identifier

Vermont State Plane Coordinate System
 North American Datum of 1983
 SPCS_Zone_Identifier: 4400
 Geodetic Reference System 80
 5,000-meter grid, Easting - Northing



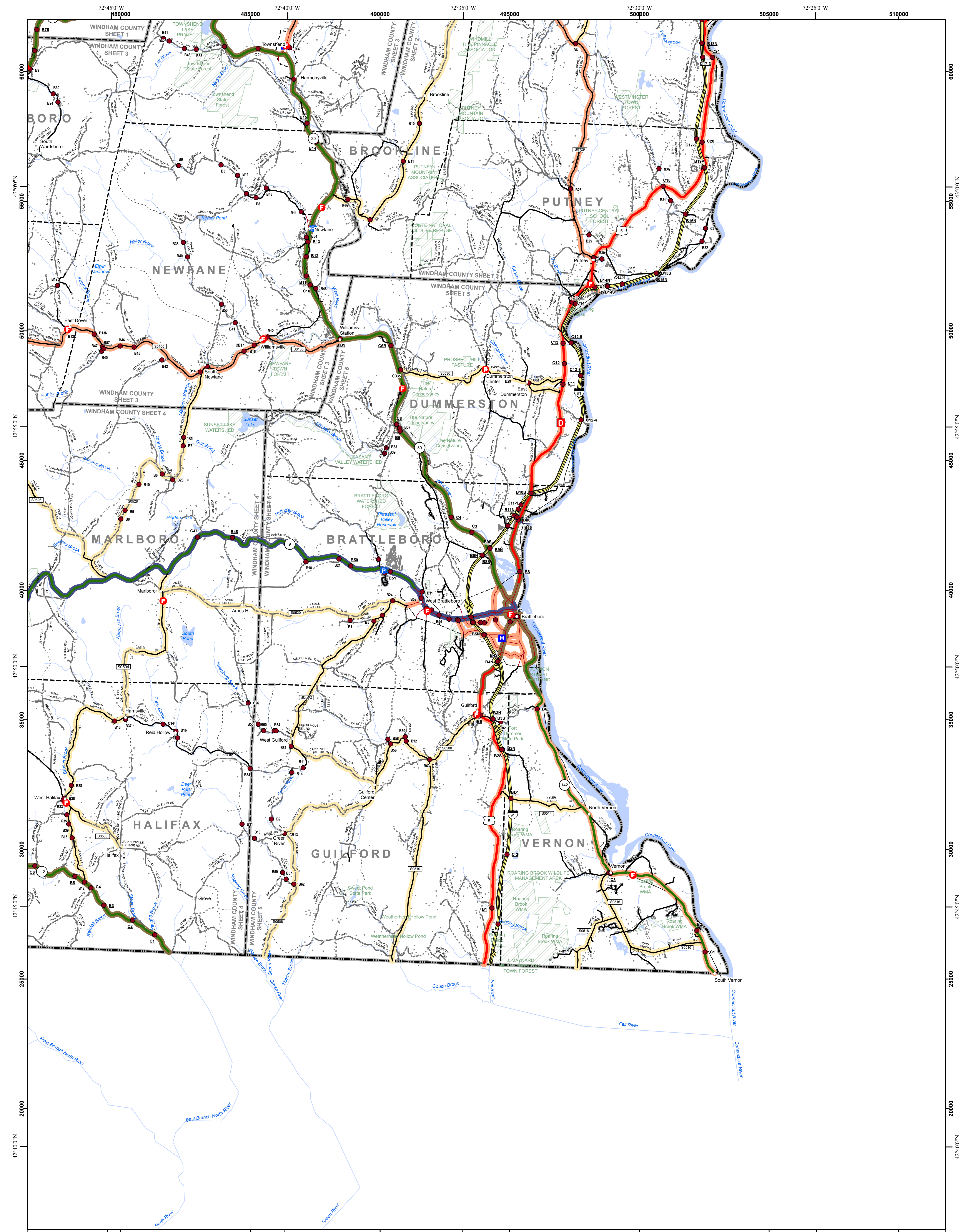
VERMONT COUNTY - TOWN MAP SERIES
WINDHAM COUNTY SHEET 4 OF 5

Prepared by the
 Vermont Agency of Transportation
 Mapping Section
 in cooperation with
 U.S. Department of Transportation
 Federal Highway Administration
 October 2017



Contact information: Vermont Agency of Transportation
 Division of Policy, Planning and Intermodal Development, Mapping Section
 1 National Life Drive, Montpelier, VT 05633-5001
 Telephone: 802-828-2600

This map was funded in part through grants from the Federal Highway Administration, U.S. Department of Transportation. The representation of the authors expressed herein do not necessarily state or reflect those of the U.S. Department of Transportation.



- Interstate
- U.S. Route
- Vermont Route
- Minor Arterial or Collector
- State Route Paved
- State Route Unpaved
- Town Highway Paved
- Town Highway Unpaved
- Unimproved or Impassible
- Discontinued Highway
- Town Legal Trail
- Winter Road Closure
- Railroad

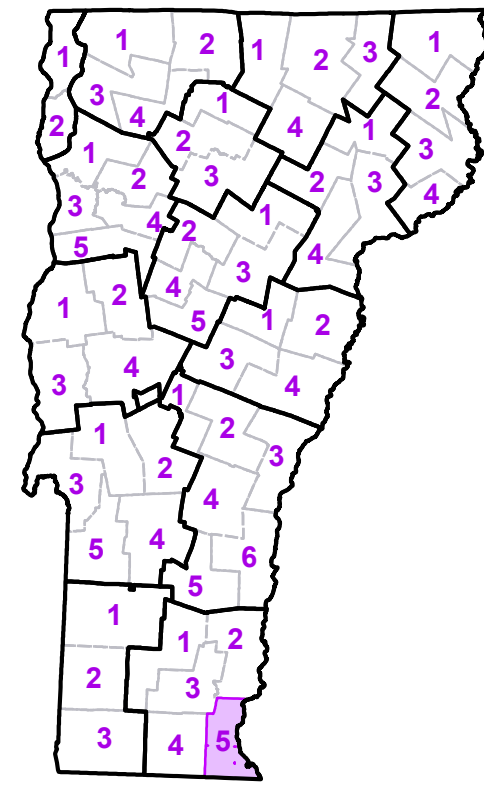
- Federal Aid Route**
- Principal Arterial
- Minor Arterial
- Major Collector
- Minor Collector-not Federal Aid eligible
- VTrans Maintenance District Office
- Emergency Response Site**
- Fire Station
- Law Enforcement
- Hospital
- Building
- Localities
- State Capital (Montpelier)
- Bridge or Culvert
- Water Body
- Stream or Brook
- Public Airport

- Political Boundary**
- State Boundary
- County Boundary
- Town Boundary
- Village Boundary
- Urban Compact Boundary
- Public Land - State/Municipal
- Green Mountain National Forest
- County Subtle

B20 / C20 State Bridge or Culvert Identifier
B2 / C20 Town Bridge or Culvert Identifier

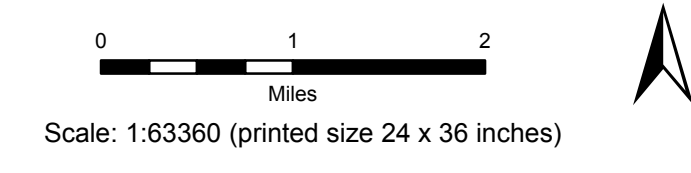
Vermont State Plane Coordinate System
 North American Datum of 1983
 SPCS_Zone_Identifier: 4400
 Geodetic Reference System 80
 5,000-meter grid, Easting - Northing

TOWN	TOWN
Brattleboro	Putney
Brattleboro-W, Brattleboro U.C.	Townshend
Brattleboro-W, Brattleboro U.C.	Townshend Village
Brookline	Vernon
Dover	Wardsboro
Dummerston	Westminster
Guilford	
Halifax	
Jamaica	
Marlboro	
Newfane	
Newfane Village	



VERMONT COUNTY - TOWN MAP SERIES
WINDHAM COUNTY
SHEET 5 OF 5

Prepared by the
 Vermont Agency of Transportation
 Mapping Section
 in cooperation with
 U.S. Department of Transportation
 Federal Highway Administration
 October 2017



Contact Information: Vermont Agency of Transportation
 Division of Policy, Planning and Intermodal Development, Mapping Section
 1 National Life Drive, Montpelier, VT 05633-5001, Telephone: 802-828-2600

This map was funded in part through grants from the Federal Highway Administration, U.S. Department of Transportation. The representation of the authors expressed herein do not necessarily state or reflect those of the U.S. Department of Transportation.