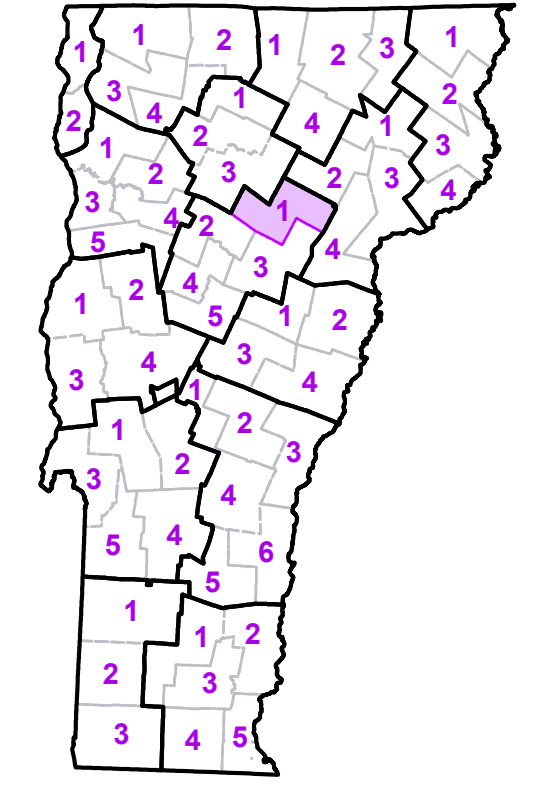


- Interstate
- U.S. Route
- Vermont Route
- Minor Arterial or Collector
- Interstate
- US Route Divided
- US Route
- State Route Paved
- State Route Unpaved
- Town Highway Paved
- Town Highway Unpaved
- Unimproved or Impassible
- Discontinued Highway
- Town Legal Trail
- Winter Road Closure
- Railroad
- Federal Aid Route**
 - Principal Arterial
 - Minor Arterial
 - Major Collector
 - Minor Collector-not Federal Aid eligible
- VTrans Maintenance District Office
- Emergency Response Site**
 - Fire Station
 - Law Enforcement
 - Hospital
 - Building
 - Localities
 - State Capital (Montpelier)
 - Bridge or Culvert
 - Water Body
 - Stream or Brook
 - Public Airport
- State Boundary
- County Boundary
- Town Boundary
- Village Boundary
- Urban Compact Boundary
- Public Land - State/Municipal
- Green Mountain National Forest
- County Subtile

TOWN	
Barnet	
Berlin	
Cabot	
Calais	
Danville	
East Montpelier	
Elmore	
Greensboro	
Groton	
Hardwick	
Hardwick U.C.	
Marshfield	
Marshfield Village	
Middlesex	
Montpelier City	
Moretown	
Morrisville	
Morrisville Village	
Peacham	
Plainfield	
Ryegate	
Stannard	
Stowe	
Walden	
Waterbury	
Waterbury Village	
Wheelock	
Wolcott	
Woodbury	
Worcester	

B20 / C20 State Bridge or Culvert Identifier
 B20 / C20 Town Bridge or Culvert Identifier

Vermont State Plane Coordinate System
 North American Datum of 1983
 SPCS_Zone_Identifier: 4400
 Geodetic Reference System 80
 5,000-meter grid, Easting - Northing

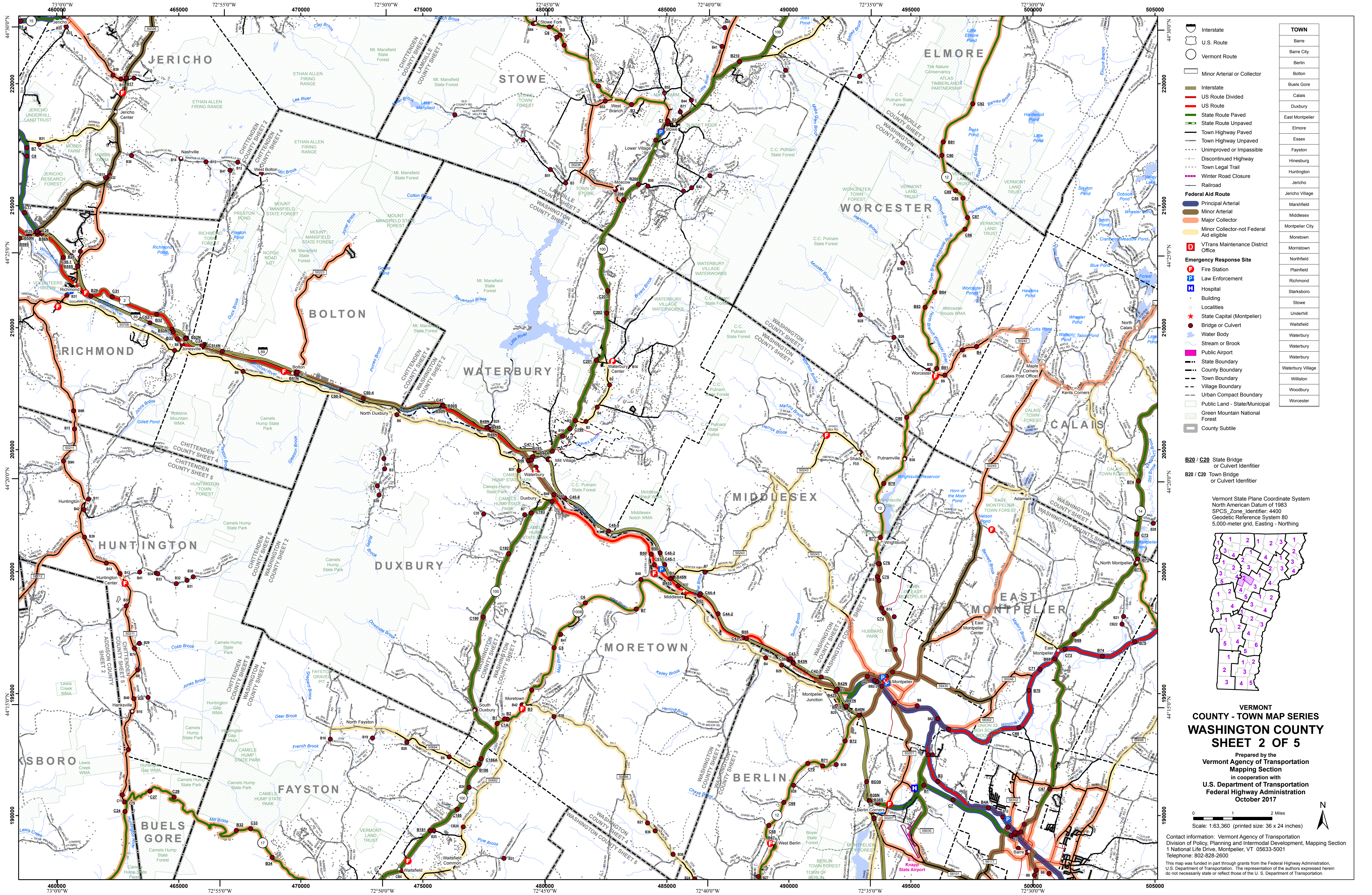


VERMONT COUNTY - TOWN MAP SERIES
WASHINGTON COUNTY
SHEET 1 OF 5

Prepared by the
 Vermont Agency of Transportation
 Mapping Section
 in cooperation with
 U.S. Department of Transportation
 Federal Highway Administration
 October 2017

Scale: 1:63,360 (printed size: 36 x 24 inches)

Contact information: Vermont Agency of Transportation
 Division of Policy, Planning and Intermodal Development, Mapping Section
 National Life Drive, Montpelier, VT 05633-5001
 Telephone: 802-828-2600
 This map was funded in part through grants from the Federal Highway Administration,
 U.S. Department of Transportation. The representation of the authors expressed herein
 does not necessarily state or reflect those of the U. S. Department of Transportation.



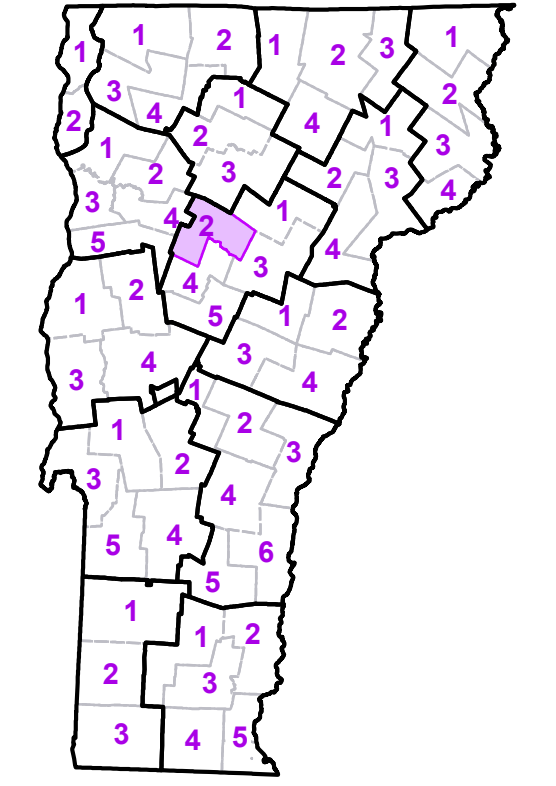
- Interstate
 - U.S. Route
 - Vermont Route
 - Minor Arterial or Collector
 - Interstate
 - US Route Divided
 - US Route
 - State Route Paved
 - State Route Unpaved
 - Town Highway Paved
 - Town Highway Unpaved
 - Unimproved or Impossible
 - Discontinued Highway
 - Town Legal Trail
 - Winter Road Closure
 - Railroad
- Federal Aid Route**
- Principal Arterial
 - Minor Arterial
 - Major Collector
 - Minor Collector-not Federal Aid eligible
- VTrans Maintenance District Office**
- VTrans Maintenance District Office
- Emergency Response Site**
- Fire Station
 - Law Enforcement
 - Hospital
 - Building
 - Localities
 - State Capital (Montpelier)
 - Bridge or Culvert
 - Water Body
 - Stream or Brook
 - Public Airport
- State Boundary**
- State Boundary
 - County Boundary
 - Town Boundary
 - Village Boundary
 - Urban Compact Boundary
 - Public Land - State/Municipal
 - Green Mountain National Forest
 - County Subtile

TOWN	
Barre	
Barre City	
Berlin	
Bolton	
Buells Gore	
Calais	
Duxbury	
East Montpelier	
Elmore	
Essex	
Fayston	
Hinesburg	
Huntington	
Jericho	
Jericho Village	
Marshfield	
Middlesex	
Montpelier City	
Moretown	
Morristown	
Northfield	
Plainfield	
Richmond	
Starksboro	
Stowe	
Underhill	
Waitsfield	
Waterbury	
Waterbury	
Waterbury	
Waterbury Village	
Williston	
Woodbury	
Worcester	

B20 / C20 State Bridge or Culvert Identifier

B20 / C20 Town Bridge or Culvert Identifier

Vermont State Plane Coordinate System
 North American Datum of 1983
 SPCS_Zone_Identifier: 4400
 Geodetic Reference System 80
 5,000-meter grid, Easting - Northing



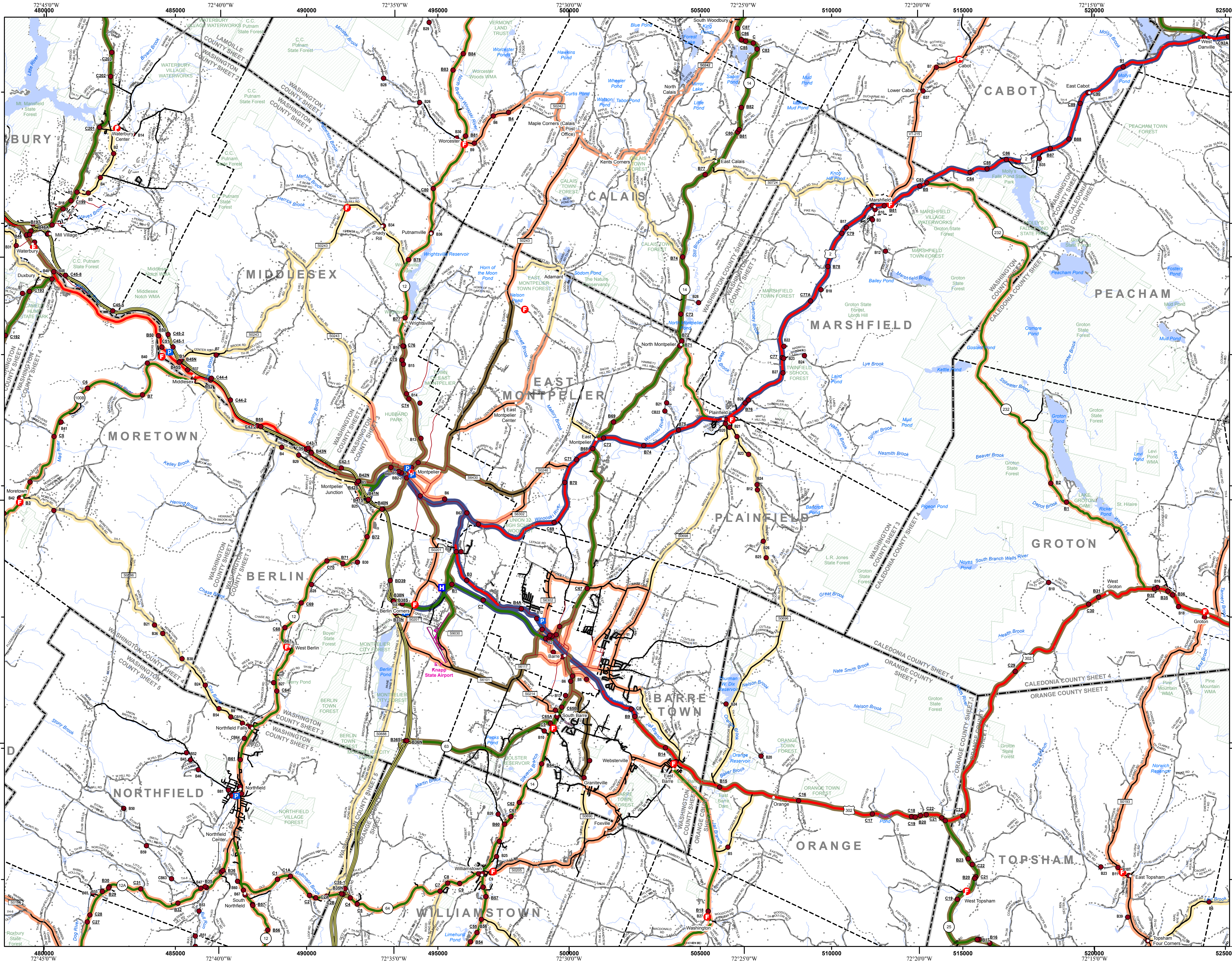
VERMONT COUNTY - TOWN MAP SERIES
WASHINGTON COUNTY
SHEET 2 OF 5

Prepared by the
 Vermont Agency of Transportation
 Mapping Section
 in cooperation with
 U.S. Department of Transportation
 Federal Highway Administration
 October 2017

Scale: 1:63,360 (printed size: 36 x 24 inches)

Contact information: Vermont Agency of Transportation
 Division of Policy, Planning and Intermodal Development, Mapping Section
 1 National Life Drive, Montpelier, VT 05633-5001
 Telephone: 802-828-2600

This map was funded in part through grants from the Federal Highway Administration, U.S. Department of Transportation. The representation of the authors expressed herein do not necessarily state or reflect those of the U.S. Department of Transportation.

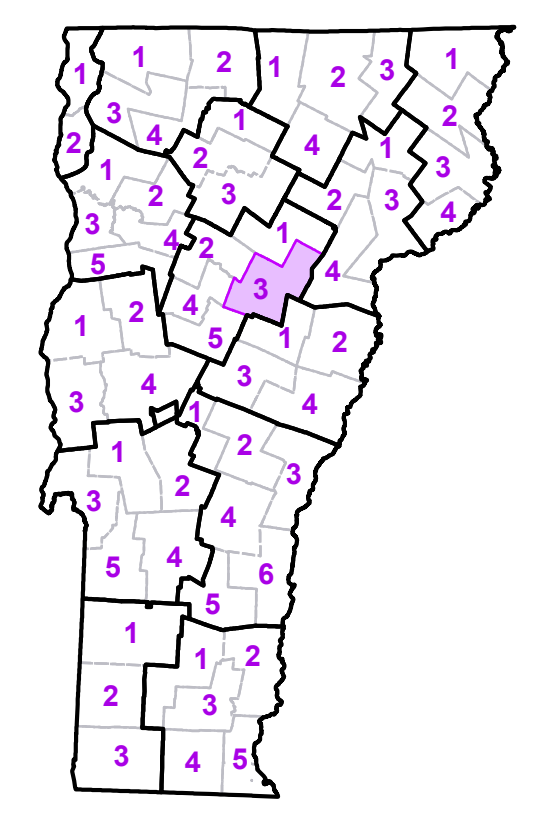


	Interstate
	U.S. Route
	Vermont Route
	Minor Arterial or Collector
	Interstate
	US Route Divided
	US Route
	State Route Paved
	State Route Unpaved
	Town Highway Paved
	Town Highway Unpaved
	Unimproved or Impassible
	Discontinued Highway
	Town Legal Trail
	Winter Road Closure
	Railroad
	Federal Aid Route
	Principal Arterial
	Minor Arterial
	Major Collector
	Minor Collector-not Federal Aid eligible
	VTrans Maintenance District Office
	Emergency Response Site
	Fire Station
	Law Enforcement
	Hospital
	Building
	Localities
	State Capital (Montpelier)
	Bridge or Culvert
	Water Body
	Stream or Brook
	Public Airport
	State Boundary
	County Boundary
	Town Boundary
	Village Boundary
	Urban Compact Boundary
	Public Land - State/Municipal
	Green Mountain National Forest
	County Subtile

TOWN	
Barnet	
Barre	
Barre City	
Berlin	
Cabot	
Calais	
Danville	
Duxbury	
East Montpelier	
Groton	
Groton Village	
Marshfield	
Marshfield Village	
Middlesex	
Montpelier City	
Moretown	
Newbury	
Northfield	
Orange	
Peacham	
Plainfield	
Roxbury	
Ryegate	
Stowe	
Topsham	
Watsfield	
Washington	
Waterbury	
Waterbury	
Waterbury	
Waterbury Village	
Williamstown	
Woodbury	
Worcester	

B20 / C20 State Bridge or Culvert Identifier
 B20 / C20 Town Bridge or Culvert Identifier

Vermont State Plane Coordinate System
 North American Datum of 1983
 SPCS_Zone_Identifier: 4400
 Geodetic Reference System 80
 5,000-meter grid, Easting - Northing



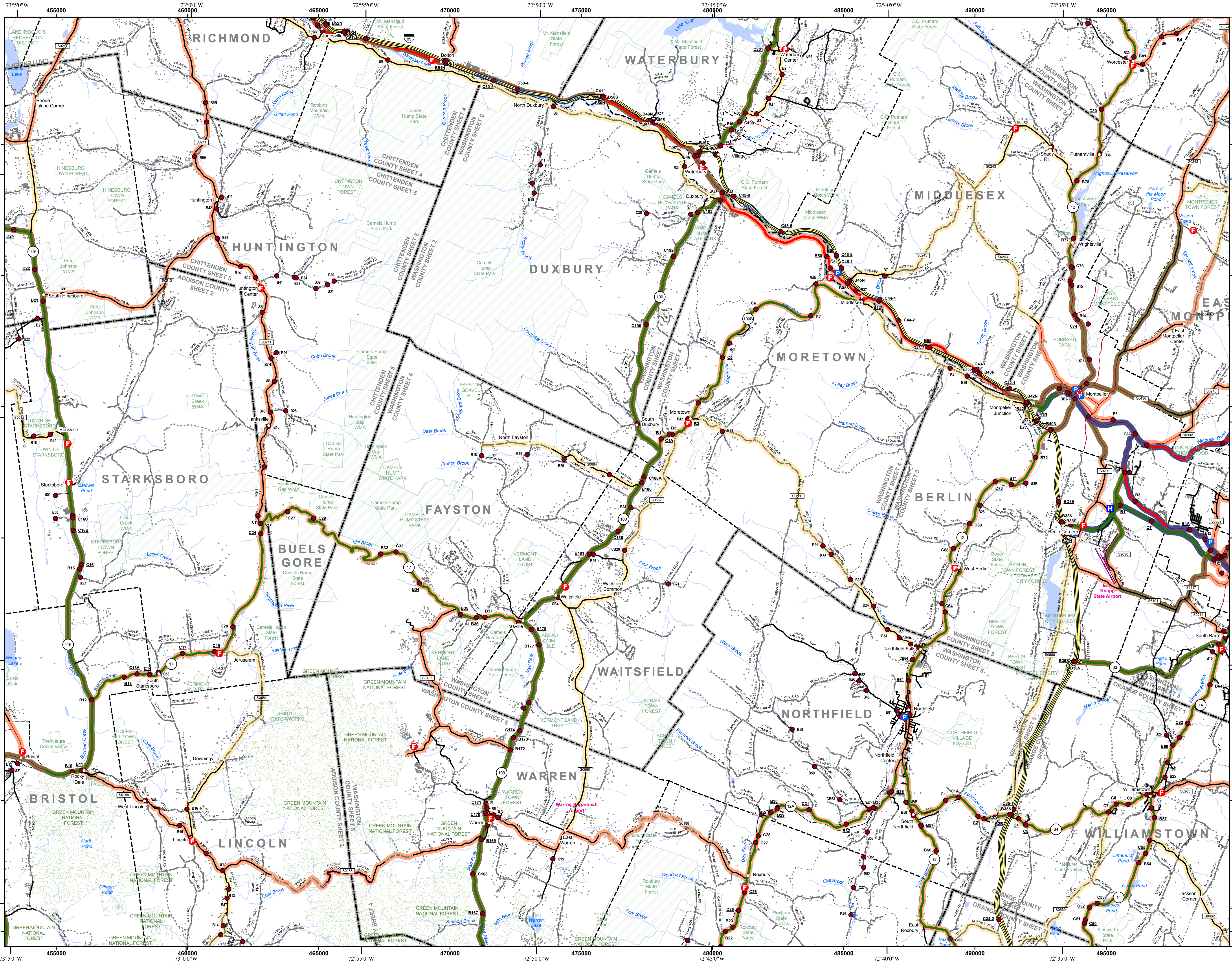
VERMONT COUNTY - TOWN MAP SERIES
WASHINGTON COUNTY
SHEET 3 OF 5

Prepared by the
 Vermont Agency of Transportation
 Mapping Section
 in cooperation with
 U.S. Department of Transportation
 Federal Highway Administration
 October 2017

Scale: 1:63,360 (printed size: 36 x 24 inches)

Contact information: Vermont Agency of Transportation
 Division of Policy, Planning and Intermodal Development, Mapping Section
 1 National Life Drive, Montpelier, VT 05633-5001
 Telephone: 802-828-2600

This map was funded in part through grants from the Federal Highway Administration, U.S. Department of Transportation. The representation of the authors expressed herein do not necessarily state or reflect those of the U. S. Department of Transportation.

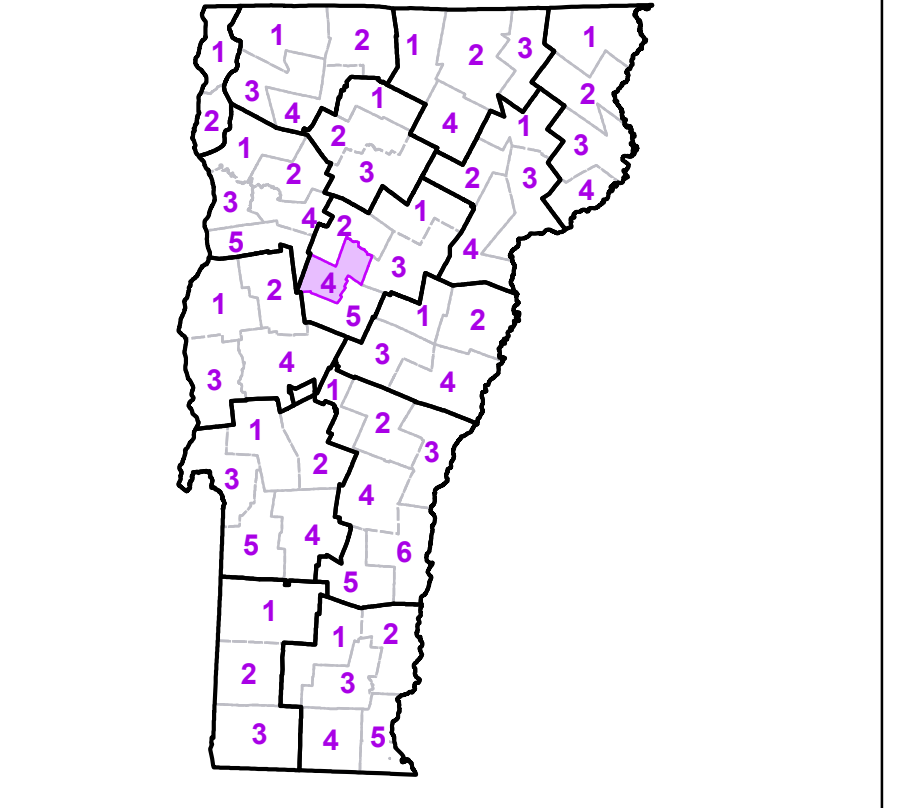


	Interstate
	U.S. Route
	Vermont Route
	Minor Arterial or Collector
	Interstate
	US Route Divided
	US Route
	State Route Paved
	State Route Unpaved
	Town Highway Paved
	Town Highway Unpaved
	Unimproved or Impassible
	Discontinued Highway
	Town Legal Trail
	Winter Road Closure
	Railroad
	Federal Aid Route
	Principal Arterial
	Minor Arterial
	Major Collector
	Minor Collector-not Federal Aid eligible
	VTrans Maintenance District Office
	Emergency Response Site
	Fire Station
	Law Enforcement
	Hospital
	Building
	Localities
	State Capital (Montpelier)
	Bridge or Culvert
	Water Body
	Stream or Brook
	Public Airport
	State Boundary
	County Boundary
	Town Boundary
	Village Boundary
	Urban Compact Boundary
	Public Land - State/Municipal
	Green Mountain National Forest
	County Subtile

TOWN	
Barre	
Barre City	
Berlin	
Bolton	
Bristol	
Bristol U.C.	
Brookfield	
Buels Gore	
Calais	
Dubury	
East Montpelier	
Fayston	
Granville	
Hinesburg	
Huntington	
Lincoln	
Middlesex	
Monkton	
Montpelier City	
Moretown	
Northfield	
Richmond	
Roxbury	
St. George	
Starksboro	
Waitsfield	
Warren	
Waterbury	
Waterbury	
Waterbury Village	
Williamstown	
Williston	
Worcester	

B20 / C20 State Bridge or Culvert Identifier
 B20 / C20 Town Bridge or Culvert Identifier

Vermont State Plane Coordinate System
 North American Datum of 1983
 SPCS_Zone_Identifier: 4400
 Geodetic Reference System 80
 5,000-meter grid, Easting - Northing



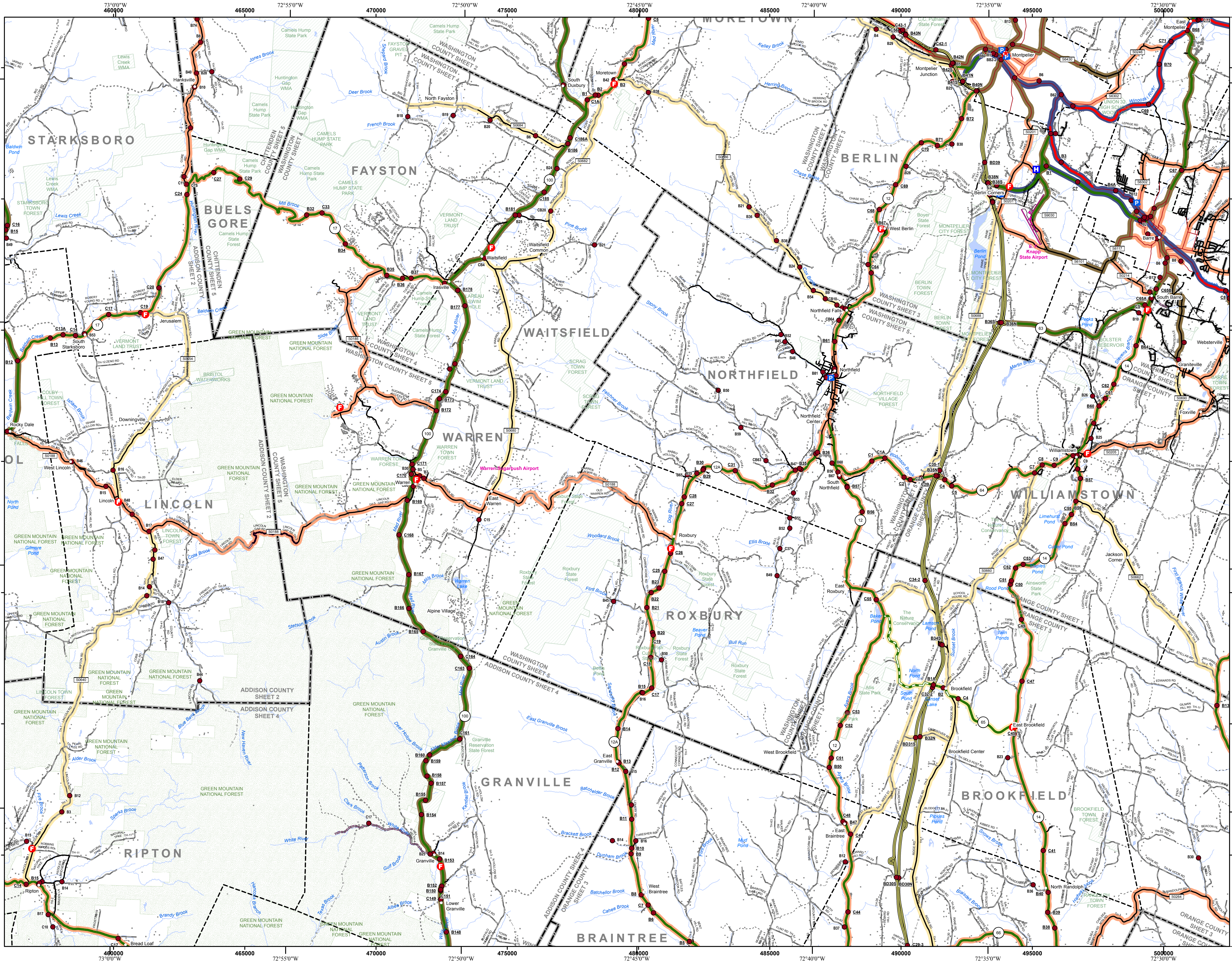
VERMONT COUNTY - TOWN MAP SERIES
WASHINGTON COUNTY
SHEET 4 OF 5

Prepared by the
 Vermont Agency of Transportation
 Mapping Section
 in cooperation with
 U.S. Department of Transportation
 Federal Highway Administration
 October 2017

Scale: 1:63,360 (printed size: 36 x 24 inches)

Contact information: Vermont Agency of Transportation
 Division of Policy, Planning and Intermodal Development, Mapping Section
 1 National Life Drive, Montpelier, VT 05633-5001
 Telephone: 802-228-2600

This map was funded in part through grants from the Federal Highway Administration, U.S. Department of Transportation. The representation of the authors expressed herein does not necessarily state or reflect those of the U.S. Department of Transportation.



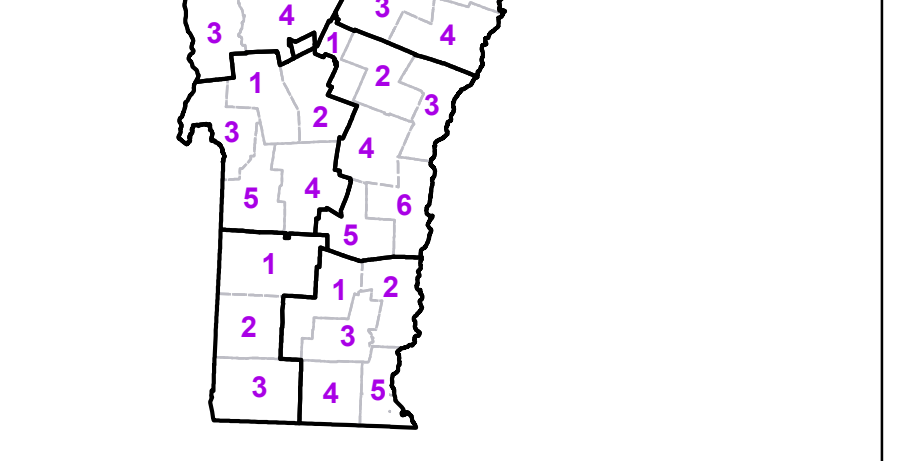
TOWN	
Barre	
Barre City	
Berlin	
Braintree	
Bristol	
Brookfield	
Buets Gore	
Chelsea	
Duxbury	
East Montpelier	
Fayston	
Granville	
Hancock	
Huntington	
Lincoln	
Middlesex	
Montpelier City	
Moretown	
Northfield	
Plainfield	
Randolph	
Ripton	
Rochester	
Roxbury	
Salisbury	
Starksboro	
Tunbridge	
Waitsfield	
Warren	
Washington	
Williamstown	

- Interstate
- U.S. Route
- Vermont Route
- Minor Arterial or Collector
- Interstate
- US Route Divided
- US Route
- State Route Paved
- State Route Unpaved
- Town Highway Paved
- Town Highway Unpaved
- Unimproved or Impassible
- Discontinued Highway
- Town Legal Trail
- Winter Road Closure
- Railroad

- Federal Aid Route
- Principal Arterial
- Minor Arterial
- Major Collector
- Minor Collector-not Federal Aid eligible
- VTrans Maintenance District Office

- Emergency Response Site
- Fire Station
- Law Enforcement
- Hospital
- Building
- Localities
- State Capital (Montpelier)
- Bridge or Culvert
- Water Body
- Stream or Brook
- Public Airport

- State Boundary
- County Boundary
- Town Boundary
- Village Boundary
- Urban Compact Boundary
- Public Land - State/Municipal
- Green Mountain National Forest
- County Subtile



Vermont State Plane Coordinate System
 North American Datum of 1983
 SPCS_Zone_Identifier: 4400
 Geodetic Reference System 80
 5,000-meter grid, Easting - Northing

VERMONT COUNTY - TOWN MAP SERIES
WASHINGTON COUNTY SHEET 5 OF 5

Prepared by the
 Vermont Agency of Transportation
 Mapping Section
 in cooperation with
 U.S. Department of Transportation
 Federal Highway Administration
 October 2017

Scale: 1:63,360 (printed size: 36 x 24 inches)

Contact information: Vermont Agency of Transportation
 Division of Policy, Planning and Intermodal Development, Mapping Section
 1 National Life Drive, Montpelier, VT 05633-5001
 Telephone: 802-828-2600

This map was funded in part through grants from the Federal Highway Administration, U.S. Department of Transportation. The representation of the authors expressed herein do not necessarily state or reflect those of the U.S. Department of Transportation.