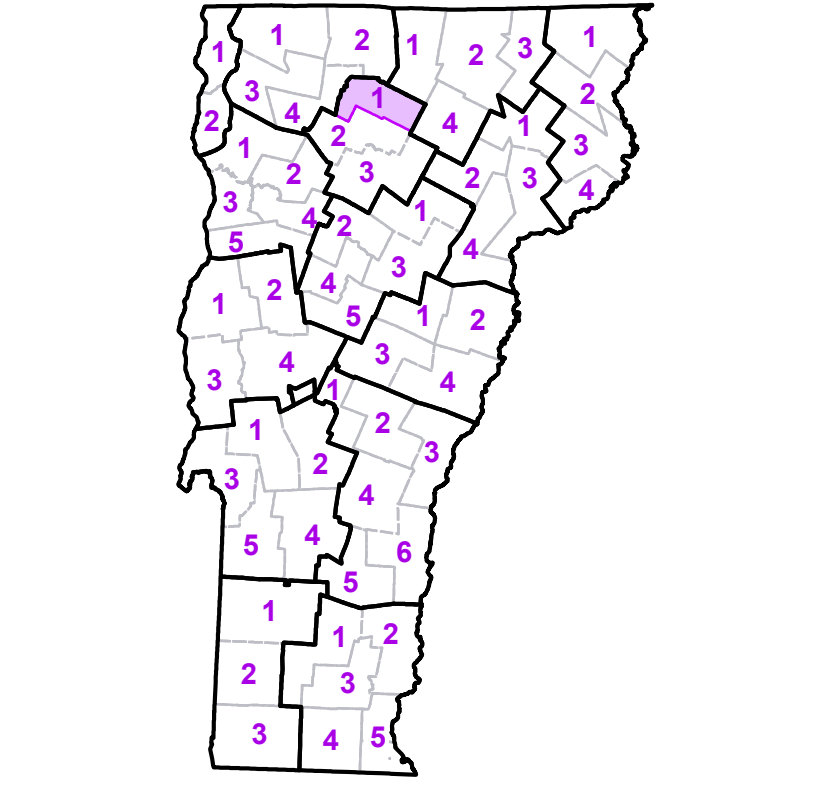


	Interstate
	U.S. Route
	Vermont Route
	Minor Arterial or Collector
	Interstate
	US Route Divided
	US Route
	State Route Paved
	State Route Unpaved
	Town Highway Paved
	Town Highway Unpaved
	Unimproved or Impassible
	Discontinued Highway
	Town Legal Trail
	Winter Road Closure
	Railroad
	Federal Aid Route
	Principal Arterial
	Minor Arterial
	Major Collector
	Minor Collector-not Federal Aid eligible
	VTrans Maintenance District Office
	Emergency Response Site
	Fire Station
	Law Enforcement
	Hospital
	Building
	Localities
	State Capital (Montpelier)
	Bridge or Culvert
	Water Body
	Stream or Brook
	Public Airport
	State Boundary
	County Boundary
	Town Boundary
	Village Boundary
	Urban Compact Boundary
	Public Land - State/Municipal
	Green Mountain National Forest
	County Subtle

TOWN
Albany
Albany Village
Bakersfield
Belvidere
Cambridge
Cambridge Village
Craftsbury
Eden
Enosburg
Fairfield
Fletcher
Glover
Greensboro
Hardwick
Hyde Park
Hyde Park Village
Irasburg
Jeffersonville Village
Johnson
Johnson Village
Lowell
Montgomery
Morrisville
Morrisville Village
Newport
Sheldon
Troy
Underhill
Waterville
Westfield
Wolcott

B20 / C20 State Bridge or Culvert Identifier
 B20 / C20 Town Bridge or Culvert Identifier

Vermont State Plane Coordinate System
 North American Datum of 1983
 SPCS_Zone_Identifier: 4400
 Geodetic Reference System 80
 5,000-meter grid, Easting - Northing



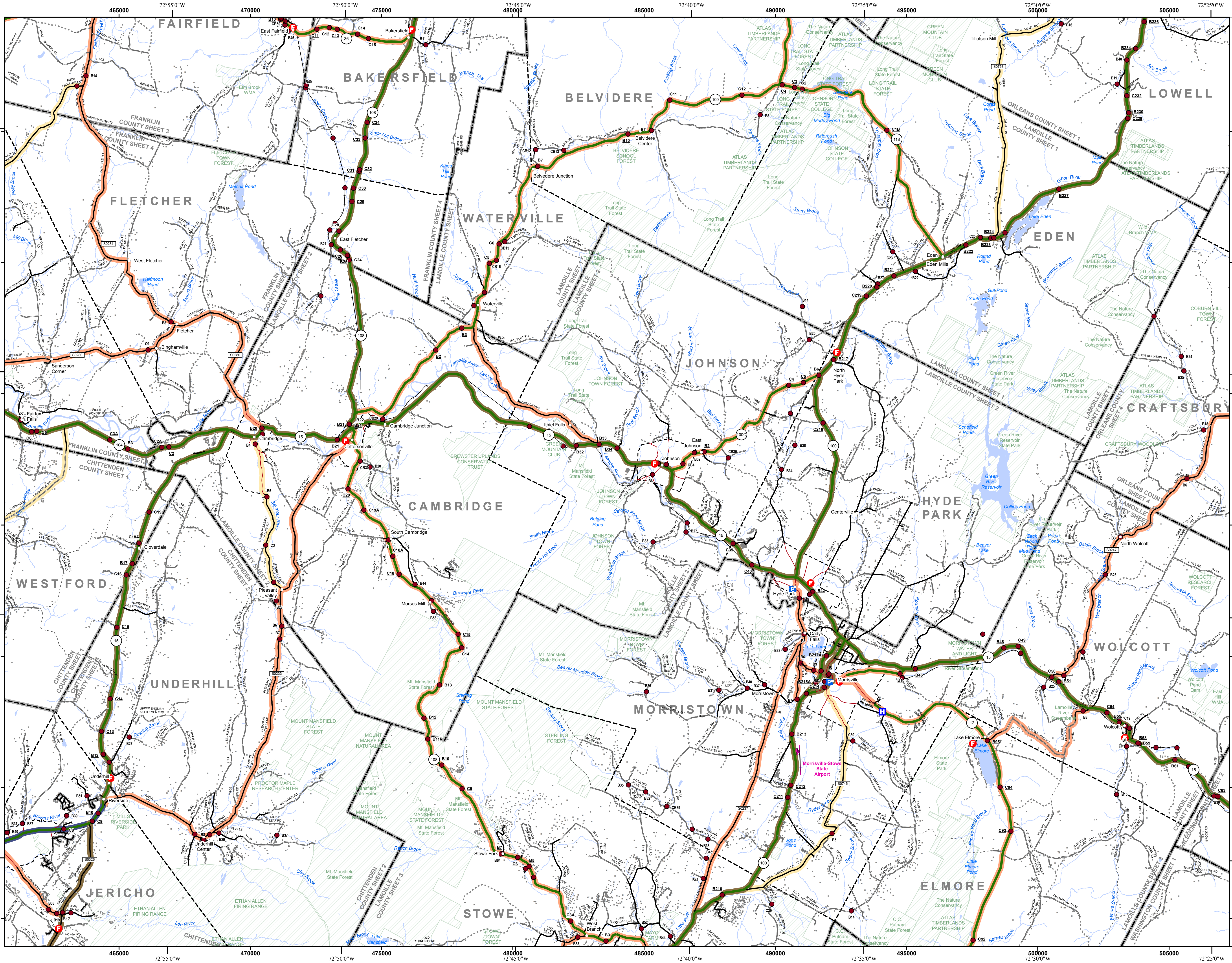
VERMONT COUNTY - TOWN MAP SERIES
LAMOILLE COUNTY
SHEET 1 OF 3

Prepared by the
 Vermont Agency of Transportation
 Mapping Section
 in cooperation with
 U.S. Department of Transportation
 Federal Highway Administration
 October 2017

Scale: 1:63,360 (printed size: 36 x 24 inches)

Contact information: Vermont Agency of Transportation
 Division of Policy, Planning and Intermodal Development, Mapping Section
 1 National Life Drive, Montpelier, VT 05633-5001
 Telephone: 802-828-2600

This map was funded in part through grants from the Federal Highway Administration, U.S. Department of Transportation. The representation of the authors expressed herein does not necessarily state or reflect those of the U.S. Department of Transportation.

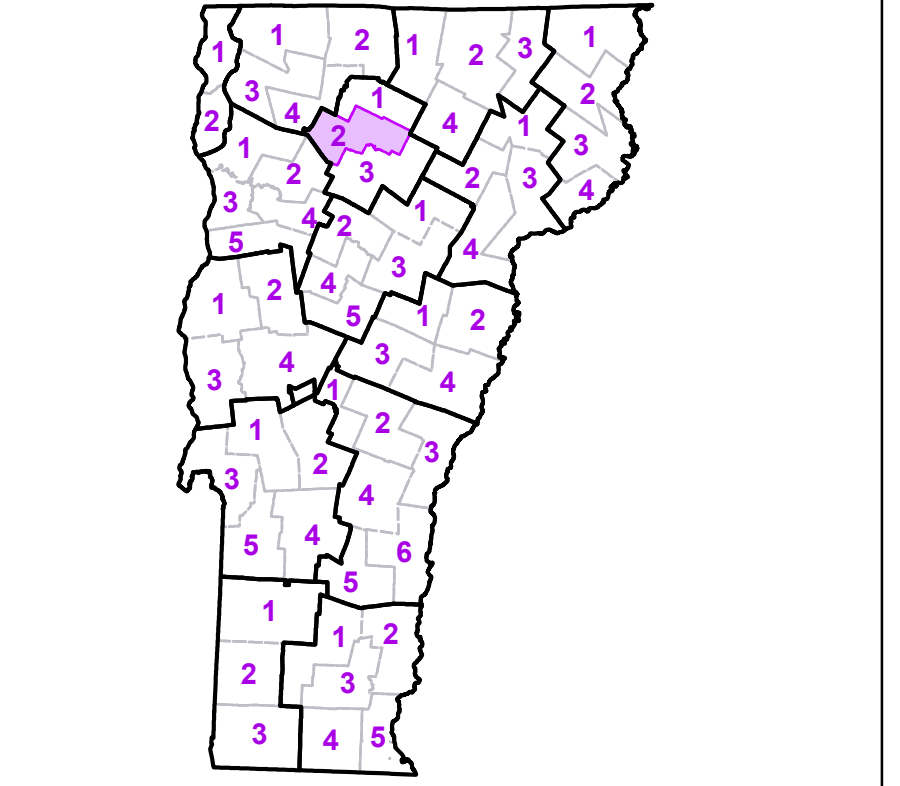


	Interstate
	U.S. Route
	Vermont Route
	Minor Arterial or Collector
	Interstate
	US Route Divided
	US Route
	State Route Paved
	State Route Unpaved
	Town Highway Paved
	Town Highway Unpaved
	Unimproved or Impassible
	Discontinued Highway
	Town Legal Trail
	Winter Road Closure
	Railroad
	Federal Aid Route Principal Arterial
	Minor Arterial
	Major Collector
	Minor Collector-not Federal Aid Eligible
	VTrans Maintenance District Office
	Emergency Response Site Fire Station
	Law Enforcement
	Hospital
	Building
	Localities
	State Capital (Montpelier)
	Bridge or Culvert
	Water Body
	Stream or Brook
	Public Airport
	State Boundary
	County Boundary
	Town Boundary
	Village Boundary
	Urban Compact Boundary
	Public Land - State/Municipal
	Green Mountain National Forest
	County Subtle

TOWN
Albany
Bakersfield
Belvidere
Bolton
Cambridge
Cambridge Village
Craftsbury
Eden
Elmore
Fairfax
Fletcher
Hardwick
Hyde Park
Hyde Park Village
Jeffersonville Village
Jericho
Jericho Village
Johnson
Johnson Village
Lowell
Montgomery
Morrisville
Morrisville Village
Stowe
Underhill
Waterville
Westford
Wolcott
Woodbury
Worcester

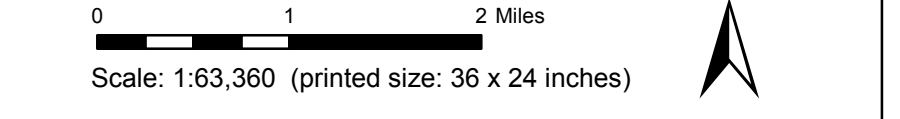
B20 / C20 State Bridge or Culvert Identifier
 B20 / C20 Town Bridge or Culvert Identifier

Vermont State Plane Coordinate System
 North American Datum of 1983
 SPCS_Zone_Identifier: 4400
 Geodetic Reference System 80
 5,000-meter grid, Easting - Northing

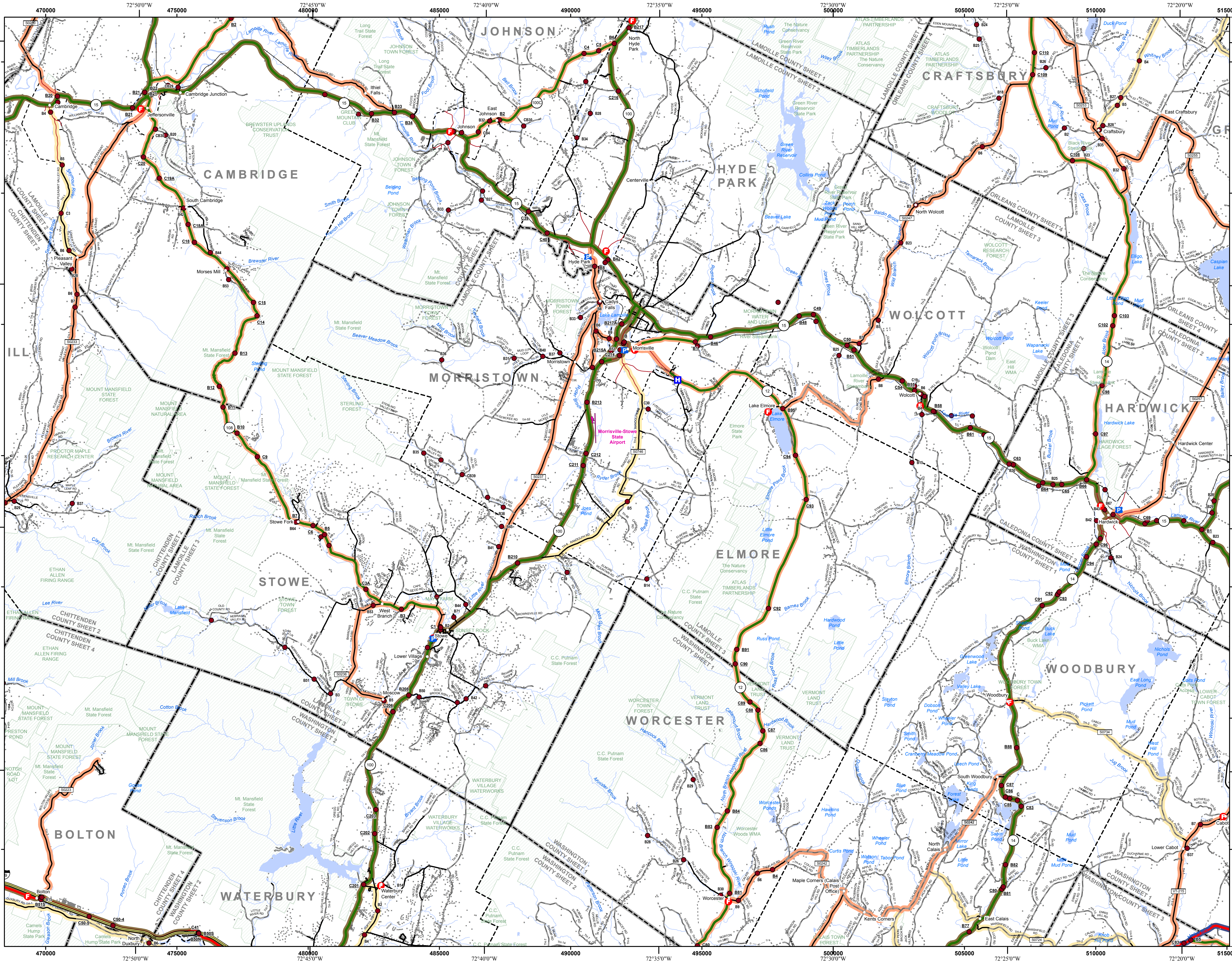


VERMONT COUNTY - TOWN MAP SERIES
LAMOILLE COUNTY
SHEET 2 OF 3

Prepared by the
 Vermont Agency of Transportation
 Mapping Section
 in cooperation with
 U.S. Department of Transportation
 Federal Highway Administration
 October 2017



Contact information: Vermont Agency of Transportation
 Division of Policy, Planning and Intermodal Development, Mapping Section
 National Life Drive, Montpelier, VT 05633-5001
 Telephone: 802-828-2600
 This map was funded in part through grants from the Federal Highway Administration, U.S. Department of Transportation. The representation of the authors expressed herein do not necessarily state or reflect those of the U.S. Department of Transportation.

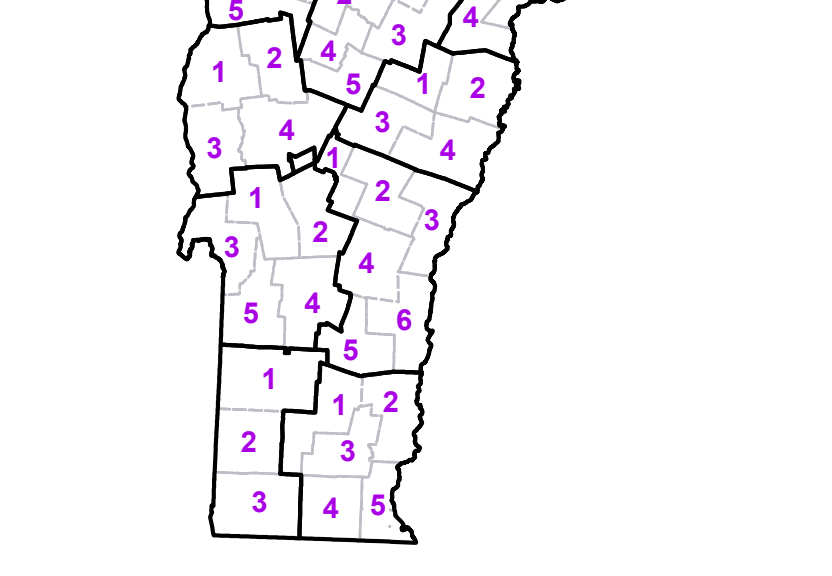


TOWN	
Albany	
Bolton	
Cabot	
Calais	
Cambridge	
Cambridge Village	
Craftsbury	
Duxbury	
Eden	
Elmore	
Fletcher	
Glover	
Greensboro	
Hardwick	
Hardwick U.C.	
Hyde Park	
Hyde Park Village	
Jeffersonville Village	
Jericho	
Johnson	
Johnson Village	
Marshallfield	
Middlesex	
Morrisstown	
Morrisville	
Stowe	
Underhill	
Walden	
Waterbury	
Waterbury Village	
Wolcott	
Woodbury	
Worcester	

- Interstate
- U.S. Route
- Vermont Route
- Minor Arterial or Collector
- Interstate
- US Route Divided
- US Route
- State Route Paved
- State Route Unpaved
- Town Highway Paved
- Town Highway Unpaved
- Unimproved or Impossible
- Discontinued Highway
- Town Legal Trail
- Winter Road Closure
- Railroad

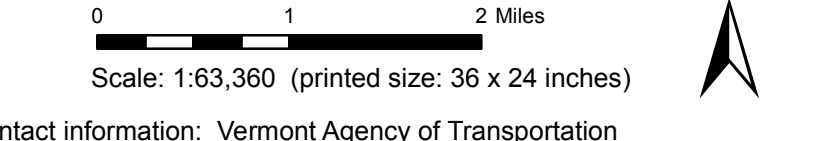
- Federal Aid Route
- Principal Arterial
- Minor Arterial
- Major Collector
- Minor Collector-not Federal Aid eligible
- VTrans Maintenance District Office
- Emergency Response Site
- Fire Station
- Law Enforcement
- Hospital
- Building
- Localities
- State Capital (Montpelier)
- Bridge or Culvert
- Water Body
- Stream or Brook
- Public Airport
- State Boundary
- County Boundary
- Town Boundary
- Village Boundary
- Urban Compact Boundary
- Public Land - State/Municipal
- Green Mountain National Forest
- County Subtle

B20 / C20 State Bridge or Culvert Identifier
 B20 / C20 Town Bridge or Culvert Identifier



VERMONT COUNTY - TOWN MAP SERIES
LAMOILLE COUNTY SHEET 3 OF 3

Prepared by the Vermont Agency of Transportation Mapping Section in cooperation with U.S. Department of Transportation Federal Highway Administration October 2017



Contact information: Vermont Agency of Transportation Division of Policy, Planning and Intermodal Development, Mapping Section 1 National Life Drive, Montpelier, VT 05633-5001 Telephone: 802-828-2600
 This map was funded in part through grants from the Federal Highway Administration, U.S. Department of Transportation. The representation of the authors expressed herein do not necessarily state or reflect those of the U.S. Department of Transportation.