

- Interstate
- U.S. Route
- Vermont Route
- Minor Arterial or Collector
- Interstate
- US Route Divided
- US Route
- State Route Paved
- State Route Unpaved
- Town Highway Paved
- Town Highway Unpaved
- Unimproved or Impassible
- Discontinued Highway
- Town Legal Trail
- Winter Road Closure
- Railroad

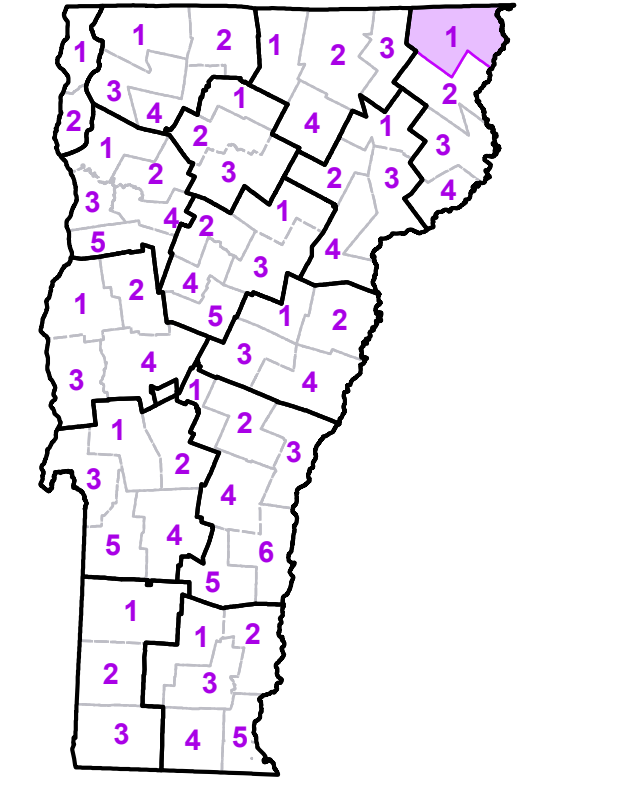
- Federal Aid Route**
- Principal Arterial
 - Minor Arterial
 - Major Collector
 - Minor Collector-not Federal Aid eligible
- VTrans Maintenance District Office**
- VTrans Maintenance District Office
- Emergency Response Site**
- Fire Station
 - Law Enforcement
 - Hospital
 - Building
 - Localities
 - State Capital (Montpelier)
 - Bridge or Culvert
 - Water Body
 - Stream or Brook
 - Public Airport
- Boundaries**
- State Boundary
 - County Boundary
 - Town Boundary
 - Village Boundary
 - Urban Compact Boundary
 - Public Land - State/Municipal
 - Green Mountain National Forest
 - County Subtile

TOWN
Averill
Averys Gore
Bloomfield
Brighton
Brunswick
Canaan
Charleston
Ferdinand
Holland
Island Pond U.C.
Lemington
Lewis
Morgan
Newark
Norton
Warrens Grant
Warren Gore
Westmore

B20 / C20 State Bridge or Culvert Identifier

B20 / C20 Town Bridge or Culvert Identifier

Vermont State Plane Coordinate System
 North American Datum of 1983
 SPCS_Zone_Identifier: 4400
 Geodetic Reference System 80
 5,000-meter grid, Easting - Northing



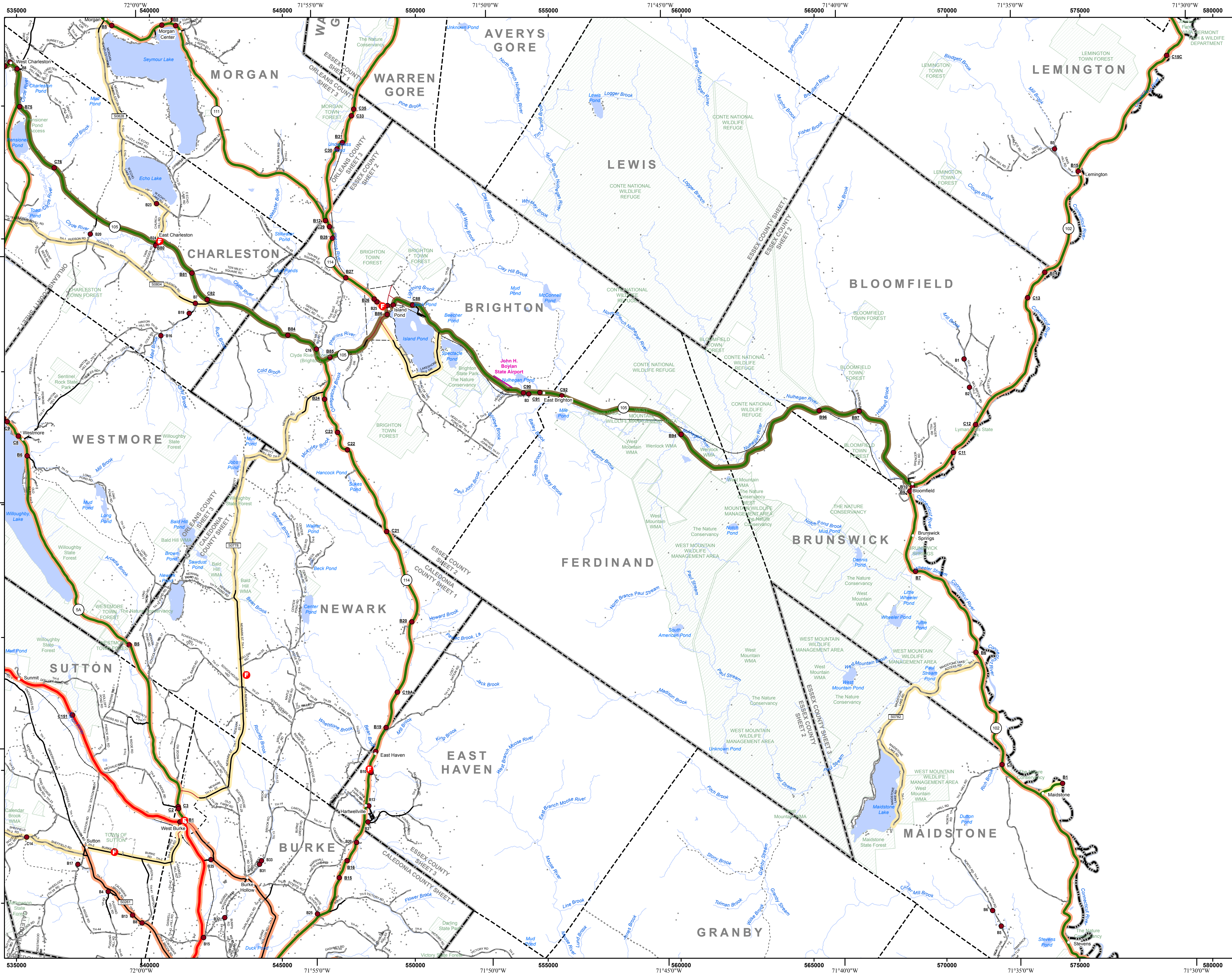
VERMONT COUNTY - TOWN MAP SERIES
ESSEX COUNTY SHEET 1 OF 4

Prepared by the
Vermont Agency of Transportation Mapping Section
 in cooperation with
U.S. Department of Transportation Federal Highway Administration
 October 2017

0 1 2 Miles
 Scale: 1:63,360 (printed size: 36 x 24 inches)

Contact information: Vermont Agency of Transportation
 Division of Policy, Planning and Intermodal Development, Mapping Section
 1 National Life Drive, Montpelier, VT 05633-5001
 Telephone: 802-828-2600

This map was funded in part through grants from the Federal Highway Administration, U.S. Department of Transportation. The representation of the authors expressed herein does not necessarily state or reflect those of the U.S. Department of Transportation.

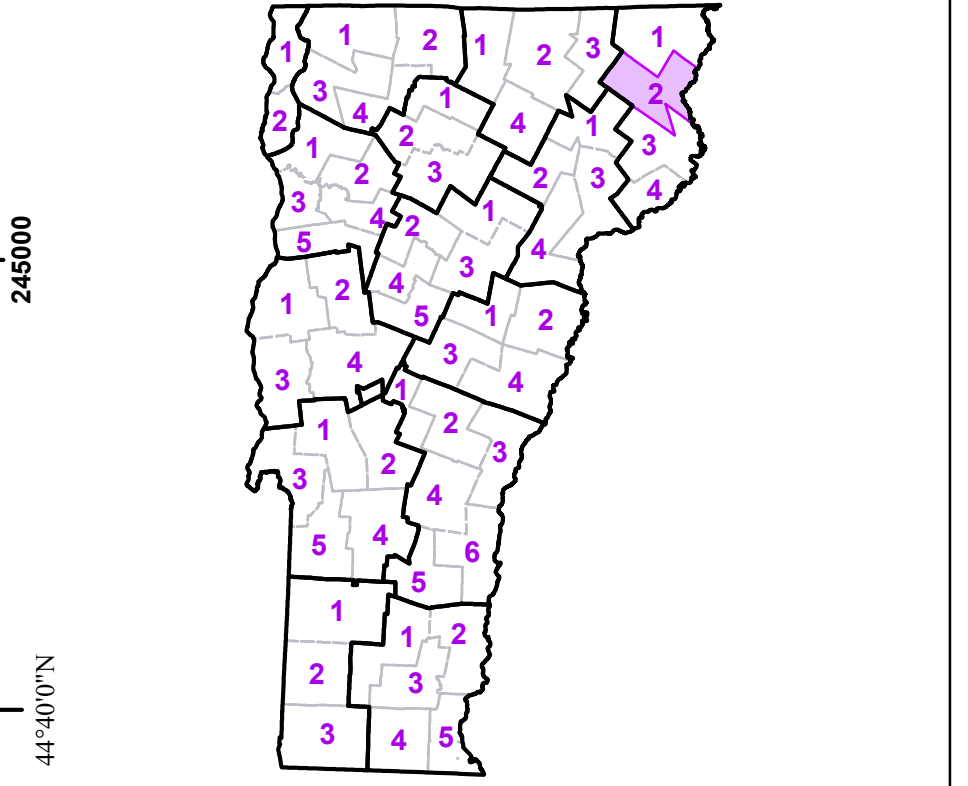


	Interstate
	U.S. Route
	Vermont Route
	Minor Arterial or Collector
	Interstate
	US Route Divided
	US Route
	State Route Paved
	State Route Unpaved
	Town Highway Paved
	Town Highway Unpaved
	Unimproved or Impassible
	Discontinued Highway
	Town Legal Trail
	Winter Road Closure
	Railroad
	Federal Aid Route Principal Arterial
	Minor Arterial
	Major Collector
	Minor Collector-not Federal Aid eligible
	VTrans Maintenance District Office
	Emergency Response Site Fire Station
	Law Enforcement
	Hospital
	Building
	Localities
	State Capital (Montpelier)
	Bridge or Culvert
	Water Body
	Stream or Brook
	Public Airport
	State Boundary
	County Boundary
	Town Boundary
	Village Boundary
	Urban Compact Boundary
	Public Land - State/Municipal
	Green Mountain National Forest
	County Subtle

TOWN
Averill
Averys Gore
Bloomfield
Brighton
Brownington
Brunswick
Burke
Canaan
Charleston
East Haven
Ferdinand
Guildhall
Island Pond U.C.
Lemington
Lewis
Lyndon
Maidstone
Morgan
Newark
Sutton
Victory
Warners Grant
Warren Gore
West Burke Village
Westmore
Wheelock

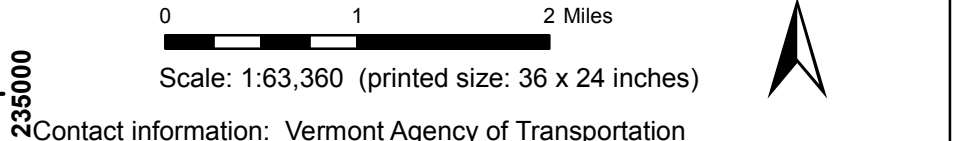
B20 / C20 State Bridge or Culvert Identifier
 B20 / C20 Town Bridge or Culvert Identifier

Vermont State Plane Coordinate System
 North American Datum of 1983
 SPCS_Zone_Identifier: 4400
 Geodetic Reference System 80
 5,000-meter grid, Easting - Northing



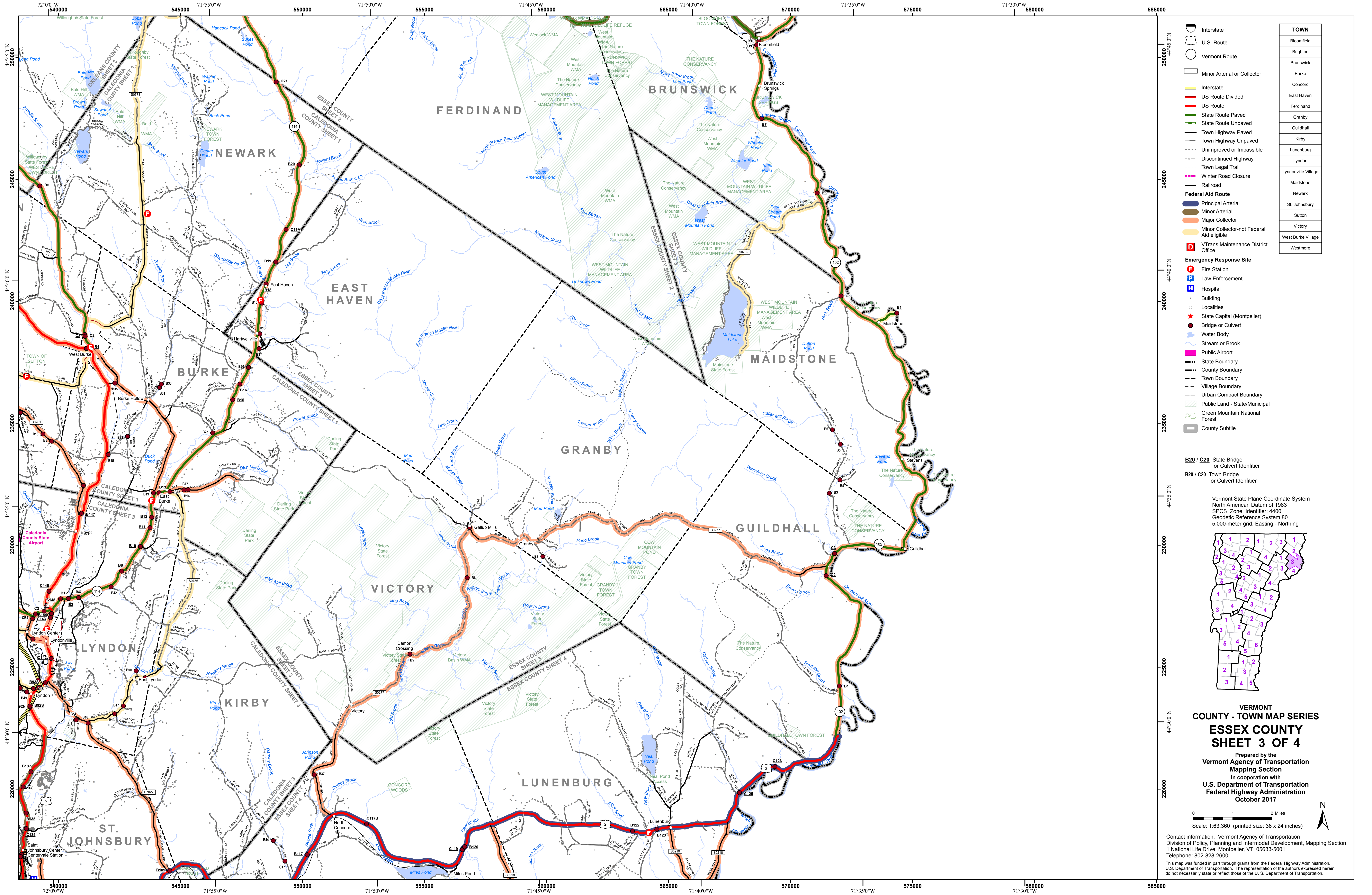
VERMONT
 COUNTY - TOWN MAP SERIES
ESSEX COUNTY
SHEET 2 OF 4

Prepared by the
 Vermont Agency of Transportation
 Mapping Section
 in cooperation with
 U.S. Department of Transportation
 Federal Highway Administration
 October 2017



Contact information: Vermont Agency of Transportation
 Division of Policy, Planning and Intermodal Development, Mapping Section
 1 National Life Drive, Montpelier, VT 05633-5001
 Telephone: 802-828-2600

This map was funded in part through grants from the Federal Highway Administration, U.S. Department of Transportation. The representation of the authors expressed herein do not necessarily state or reflect those of the U.S. Department of Transportation.



TOWN	
Bloomfield	
Brighton	
Brunswick	
Burke	
Concord	
East Haven	
Ferdinand	
Granby	
Guildhall	
Kirby	
Lunenburg	
Lyndon	
Lyndonville Village	
Maldstone	
Newark	
St. Johnsbury	
Sutton	
Victory	
West Burke Village	
Westmore	

- Interstate
- U.S. Route
- Vermont Route
- Minor Arterial or Collector
- Interstate
- US Route Divided
- US Route
- State Route Paved
- State Route Unpaved
- Town Highway Paved
- Town Highway Unpaved
- Unimproved or Impassible
- Discontinued Highway
- Town Legal Trail
- Winter Road Closure
- Railroad

Federal Aid Route

- Principal Arterial
- Minor Arterial
- Major Collector
- Minor Collector-not Federal Aid eligible

VTrans Maintenance District Office

Emergency Response Site

- Fire Station
- Law Enforcement
- Hospital
- Building
- Localities
- State Capital (Montpelier)
- Bridge or Culvert
- Water Body
- Stream or Brook
- Public Airport

State Boundary

- County Boundary
- Town Boundary
- Village Boundary
- Urban Compact Boundary
- Public Land - State/Municipal
- Green Mountain National Forest
- County Subtitle

B20 / C20 State Bridge or Culvert Identifier

B20 / C20 Town Bridge or Culvert Identifier

Vermont State Plane Coordinate System
 North American Datum of 1983
 SPCS_Zone_Identifier: 4400
 Geodetic Reference System 80
 5,000-meter grid, Easting - Northing

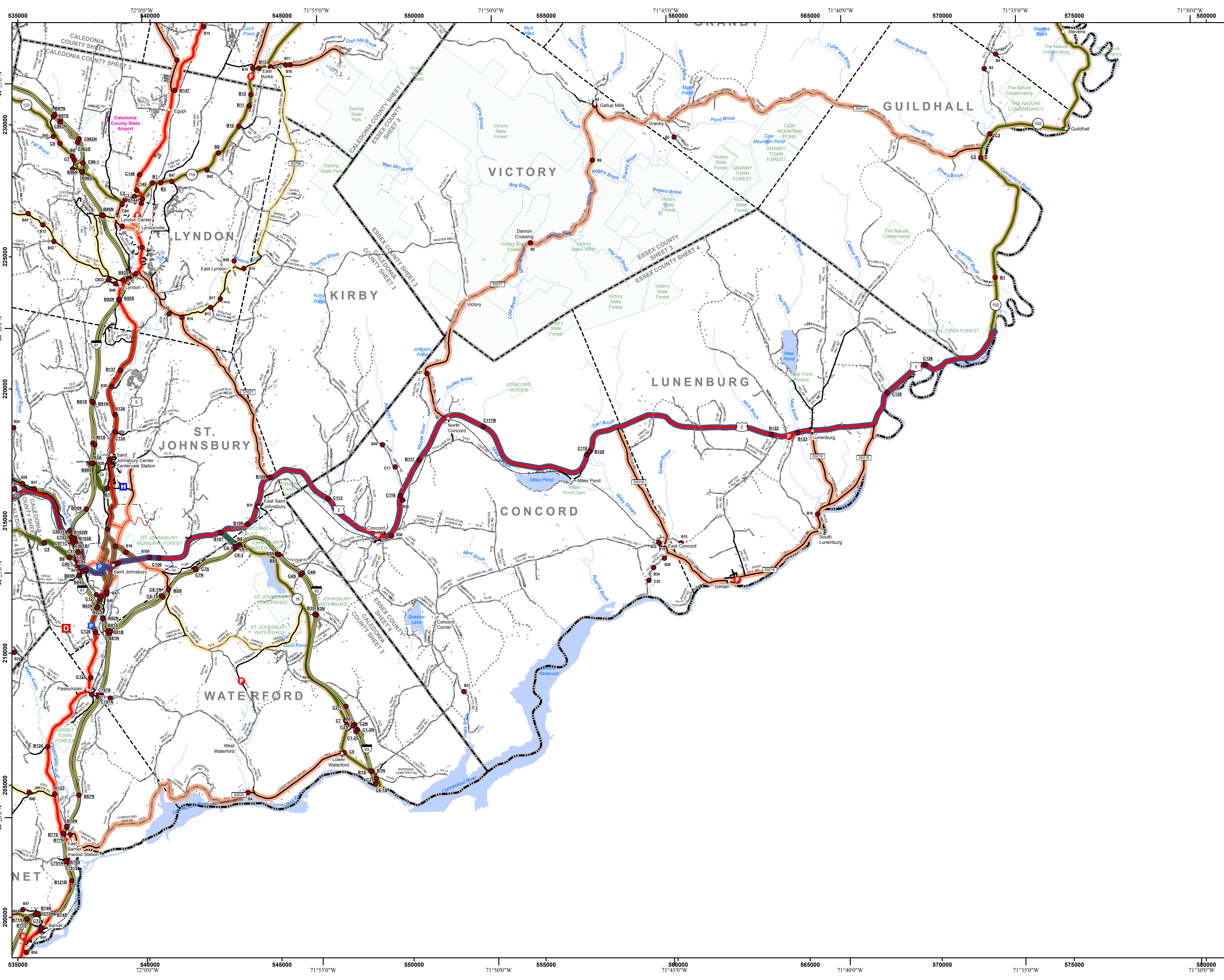
VERMONT COUNTY - TOWN MAP SERIES
ESSEX COUNTY SHEET 3 OF 4

Prepared by the
Vermont Agency of Transportation Mapping Section
 in cooperation with
U.S. Department of Transportation Federal Highway Administration
 October 2017

0 1 2 Miles
 Scale: 1:63,360 (printed size: 36 x 24 inches)

Contact information: Vermont Agency of Transportation
 Division of Policy, Planning and Intermodal Development, Mapping Section
 1 National Life Drive, Montpelier, VT 05633-5001
 Telephone: 802-828-2600

This map was funded in part through grants from the Federal Highway Administration, U.S. Department of Transportation. The representation of the authors expressed herein do not necessarily state or reflect those of the U.S. Department of Transportation.



TOWN	
	Barnet
	Burke
	Concord
	Danville
	East Haven
	Granby
	Guildhall
	Kirby
	Lunenburg
	Lyndon
	Lyndonville Village
	Maldstone
	St. Johnsbury
	St. Johnsbury U.C.
	Sutton
	Victory
	Waterford
	Wheelock

- Interstate
- U.S. Route
- Vermont Route
- Minor Arterial or Collector
- Interstate
- US Route Divided
- US Route
- State Route Paved
- State Route Unpaved
- Town Highway Paved
- Town Highway Unpaved
- Unimproved or Impassible
- Discontinued Highway
- Town Legal Trail
- Winter Road Closure
- Railroad

Federal Aid Route

- Principal Arterial
- Minor Arterial
- Major Collector
- Minor Collector-not Federal Aid eligible

VTrans Maintenance District Office

- VTrans Maintenance District Office

Emergency Response Site

- Fire Station
- Law Enforcement
- Hospital
- Building
- Localities
- State Capital (Montpelier)
- Bridge or Culvert
- Water Body
- Stream or Brook
- Public Airport

- State Boundary
- County Boundary
- Town Boundary
- Village Boundary
- Urban Compact Boundary
- Public Land - State/Municipal
- Green Mountain National Forest
- County Subtile

B20 / C20 State Bridge or Culvert Identifier

B20 / C20 Town Bridge or Culvert Identifier

Vermont State Plane Coordinate System
 North American Datum of 1983
 SPCS_Zone_Identifier: 4400
 Geodetic Reference System 80
 5,000-meter grid, Easting - Northing

VERMONT COUNTY - TOWN MAP SERIES
ESSEX COUNTY SHEET 4 OF 4

Prepared by the
 Vermont Agency of Transportation
 Mapping Section
 in cooperation with
 U.S. Department of Transportation
 Federal Highway Administration
 October 2017

0 1 2 Miles
 Scale: 1:63,360 (printed size: 36 x 24 inches)

Contact information: Vermont Agency of Transportation
 Division of Policy, Planning and Intermodal Development, Mapping Section
 21 National Life Drive, Montpelier, VT 05633-5001
 Telephone: 802-828-2600

This map was funded in part through grants from the Federal Highway Administration, U.S. Department of Transportation. The representation of the authors expressed herein do not necessarily state or reflect those of the U.S. Department of Transportation.