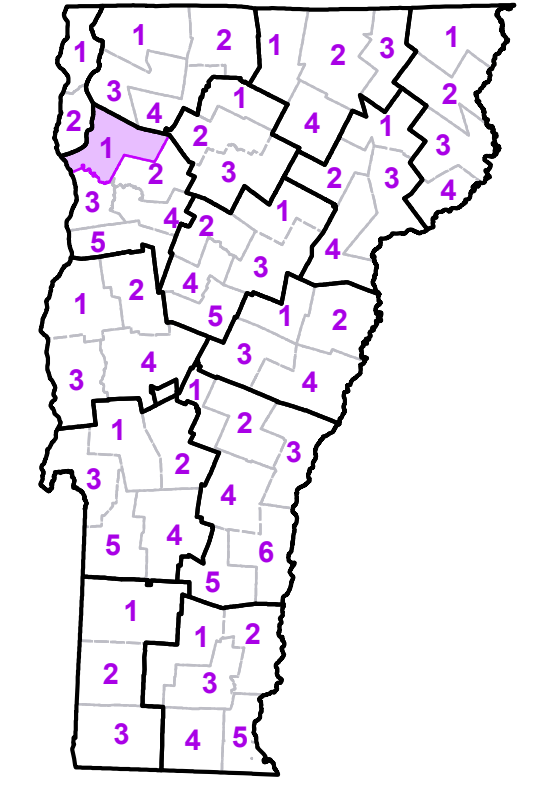


- Interstate
- U.S. Route
- Vermont Route
- Minor Arterial or Collector
- Interstate
- US Route Divided
- US Route
- State Route Paved
- State Route Unpaved
- Town Highway Paved
- Town Highway Unpaved
- Unimproved or Impassible
- Discontinued Highway
- Town Legal Trail
- Winter Road Closure
- Railroad
- Federal Aid Route
 - Principal Arterial
 - Minor Arterial
 - Major Collector
 - Minor Collector-not Federal Aid eligible
- VTrans Maintenance District Office
- Emergency Response Site
 - Fire Station
 - Law Enforcement
 - Hospital
 - Building
 - Localities
 - State Capital (Montpelier)
 - Bridge or Culvert
 - Water Body
 - Stream or Brook
 - Public Airport
- State Boundary
- County Boundary
- Town Boundary
- Village Boundary
- Urban Compact Boundary
- Public Land - State/Municipal
- Green Mountain National Forest
- County Subtitle

TOWN	
Bakersfield	
Bolton	
Burlington City	
Cambridge	
Cambridge Village	
Colchester	
Essex	
Essex Center U.C.	
Essex Junction Village	
Fairfax	
Fairfield	
Fletcher	
Georgia	
Grand Isle	
Jericho	
Jericho Village	
Milton	
Milton U.C.	
North Hero	
Shelburne	
South Burlington City	
South Hero	
St. Albans	
Underhill	
Westford	
Williston	
Winoski City	

B20 / C20 State Bridge or Culvert Identifier
B20 / C20 Town Bridge or Culvert Identifier

Vermont State Plane Coordinate System
 North American Datum of 1983
 SPCS_Zone_Identifier: 4400
 Geodetic Reference System 80
 5,000-meter grid, Easting - Northing

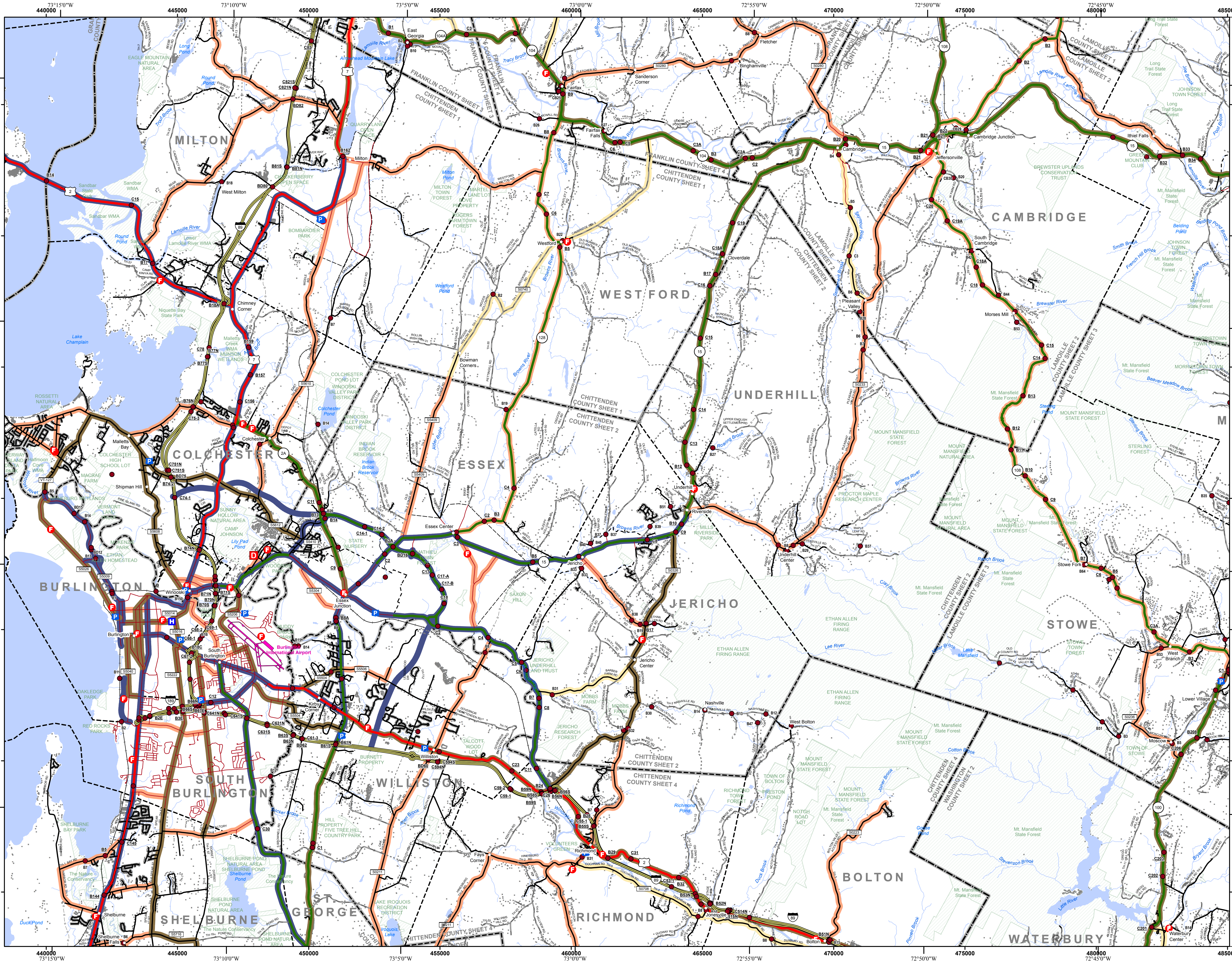


VERMONT COUNTY - TOWN MAP SERIES
CHITTENDEN COUNTY
SHEET 1 OF 5

Prepared by the
 Vermont Agency of Transportation
 Mapping Section
 in cooperation with
 U.S. Department of Transportation
 Federal Highway Administration
 October 2017

Scale: 1:63,360 (printed size: 36 x 24 inches)

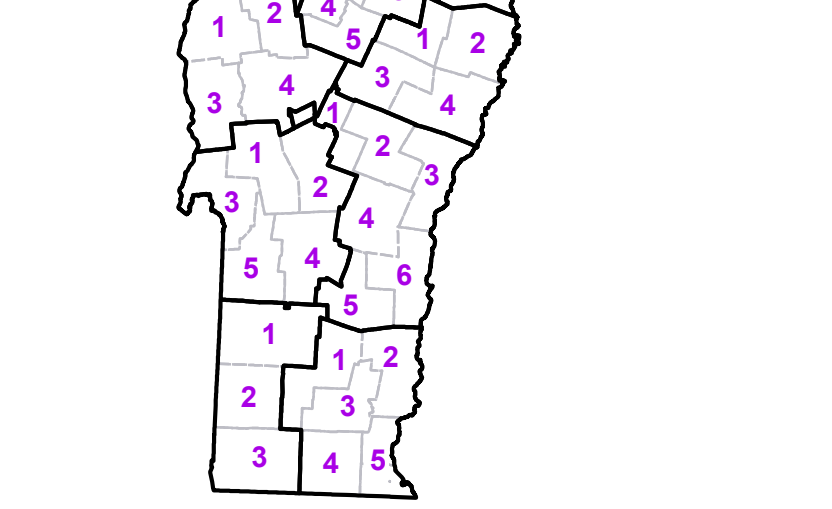
Contact information: Vermont Agency of Transportation
 Division of Policy, Planning and Intermodal Development, Mapping Section
 1 National Life Drive, Montpelier, VT 05633-5001
 Telephone: 802-828-2600
 This map was funded in part through grants from the Federal Highway Administration, U.S. Department of Transportation. The representation of the authors expressed herein do not necessarily state or reflect those of the U. S. Department of Transportation.



TOWN	
Bolton	
Burlington City	
Cambridge	
Cambridge Village	
Colchester	
Essex	
Essex Center U.C.	
Essex Junction Village	
Fairfax	
Fletcher	
Georgia	
Grand Isle	
Hinesburg	
Jeffersonville Village	
Jericho	
Jericho Village	
Johnson	
Johnson Village	
Milton	
Milton U.C.	
Morristown	
Richmond	
Shelburne	
South Burlington City	
South Hero	
St. George	
Stowe	
Underhill	
Waterbury	
Waterville	
Westford	
Williston	
Winooski City	

- Interstate
- U.S. Route
- Vermont Route
- Minor Arterial or Collector
- Interstate
- US Route Divided
- US Route
- State Route Paved
- State Route Unpaved
- Town Highway Paved
- Town Highway Unpaved
- Unimproved or Impassible
- Discontinued Highway
- Town Legal Trail
- Winter Road Closure
- Railroad

- Federal Aid Route**
 - Principal Arterial
 - Minor Arterial
 - Major Collector
 - Minor Collector-not Federal Aid eligible
- VTrans Maintenance District Office**
- Emergency Response Site**
 - Fire Station
 - Law Enforcement
 - Hospital
 - Building
 - Localities
 - State Capital (Montpelier)
 - Bridge or Culvert
 - Water Body
 - Stream or Brook
 - Public Airport



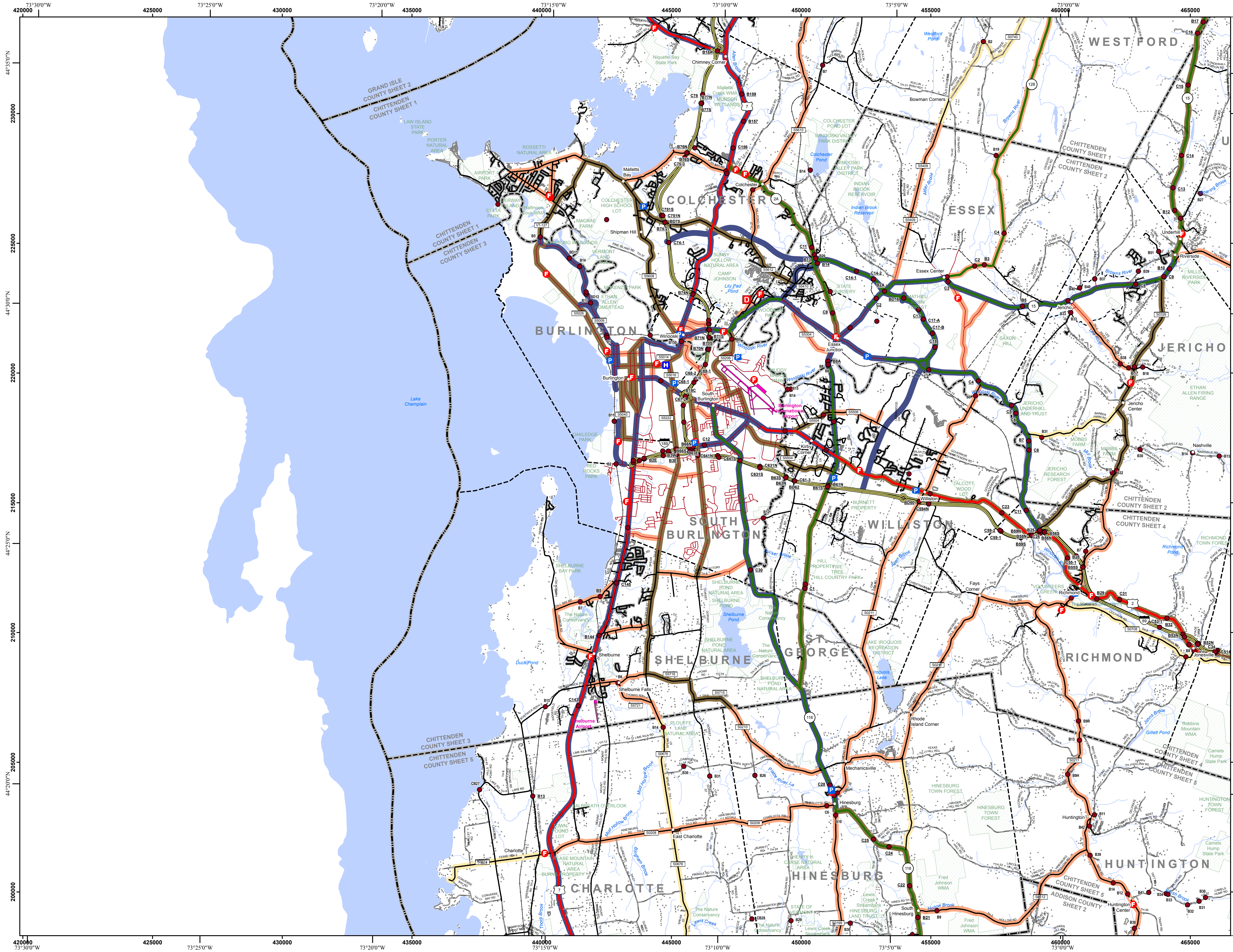
VERMONT COUNTY - TOWN MAP SERIES
CHITTENDEN COUNTY
SHEET 2 OF 5

Prepared by the
Vermont Agency of Transportation
 Mapping Section
 in cooperation with
U.S. Department of Transportation
 Federal Highway Administration
 October 2017

Scale: 1:63,360 (printed size: 36 x 24 inches)

Contact information: Vermont Agency of Transportation
 Division of Policy, Planning and Intermodal Development, Mapping Section
 1 National Life Drive, Montpelier, VT 05633-5001
 Telephone: 802-828-2600

This map was funded in part through grants from the Federal Highway Administration, U.S. Department of Transportation. The representation of the authors expressed herein do not necessarily state or reflect those of the U. S. Department of Transportation.

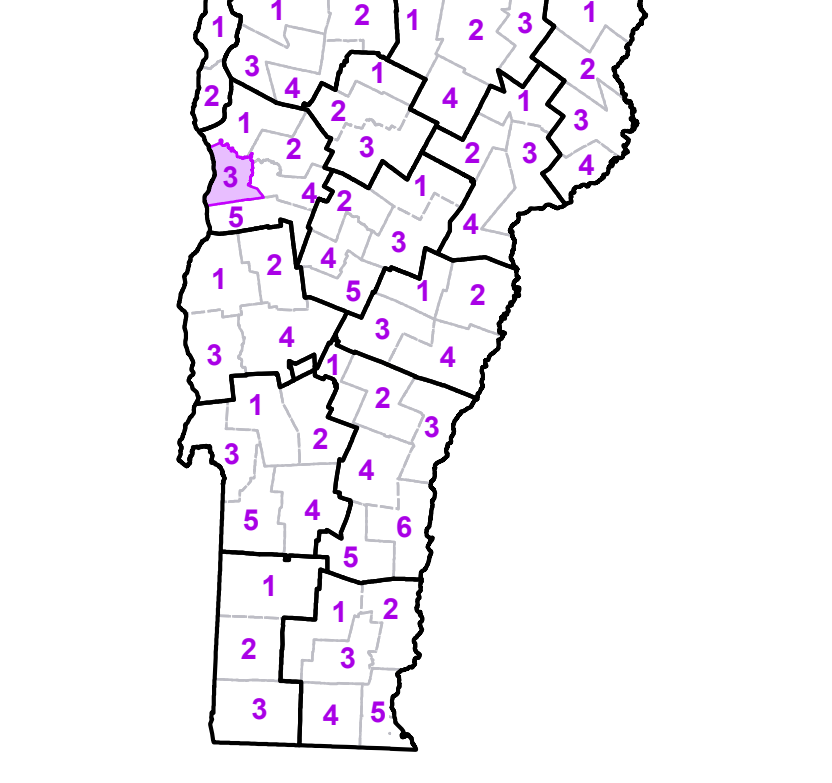


TOWN	
Bolton	
Burlington City	
Charlotte	
Colchester	
Essex	
Essex Center U.C.	
Essex Junction Village	
Hinesburg	
Huntington	
Jericho	
Jericho Village	
Milton	
Richmond	
Shelburne	
South Burlington City	
South Hero	
St. George	
Starksboro	
Underhill	
Westford	
Williston	
Winooski City	

- Interstate
- U.S. Route
- Vermont Route
- Minor Arterial or Collector
- Interstate
- US Route Divided
- US Route
- State Route Paved
- State Route Unpaved
- Town Highway Paved
- Town Highway Unpaved
- Unimproved or Impassible
- Discontinued Highway
- Town Legal Trail
- Winter Road Closure
- Railroad
- Federal Aid Route
 - Principal Arterial
 - Minor Arterial
 - Major Collector
 - Minor Collector-not Federal Aid eligible
- VTrans Maintenance District Office
- Emergency Response Site
 - Fire Station
 - Law Enforcement
 - Hospital
 - Building
 - Localities
 - State Capital (Montpelier)
 - Bridge or Culvert
 - Water Body
 - Stream or Brook
 - Public Airport
- State Boundary
- County Boundary
- Town Boundary
- Village Boundary
- Urban Compact Boundary
- Public Land - State/Municipal
- Green Mountain National Forest
- County Subtitle

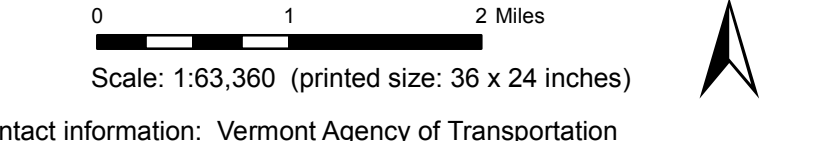
B20 / C20 State Bridge or Culvert Identifier
 B20 / C20 Town Bridge or Culvert Identifier

Vermont State Plane Coordinate System
 North American Datum of 1983
 SPCS_Zone_Identifier: 4400
 Geodetic Reference System 80
 5,000-meter grid, Easting - Northing



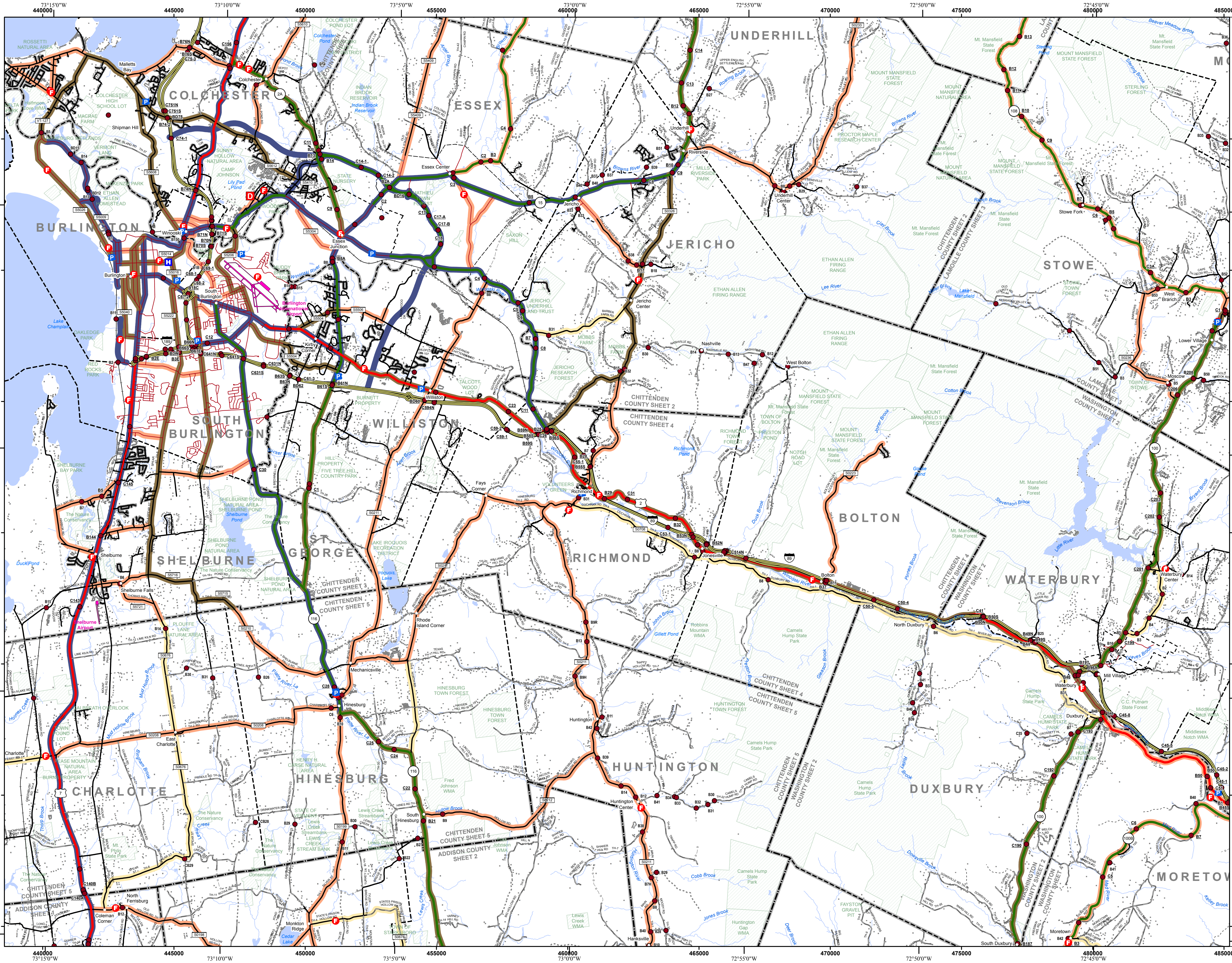
VERMONT COUNTY - TOWN MAP SERIES
CHITTENDEN COUNTY SHEET 3 OF 5

Prepared by the
Vermont Agency of Transportation Mapping Section
 in cooperation with
U.S. Department of Transportation Federal Highway Administration
 October 2017



Contact information: Vermont Agency of Transportation
 Division of Policy, Planning and Intermodal Development, Mapping Section
 1 National Life Drive, Montpelier, VT 05633-5001
 Telephone: 802-828-2600

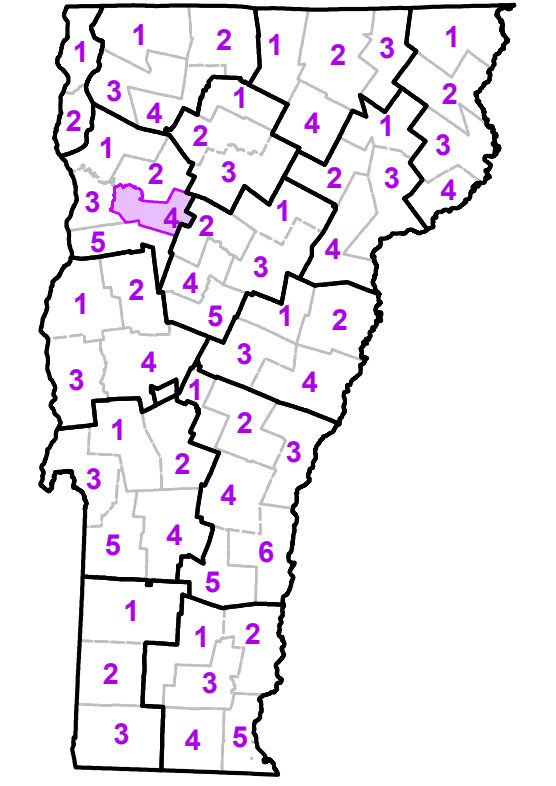
This map was funded in part through grants from the Federal Highway Administration, U.S. Department of Transportation. The representation of the authors expressed herein do not necessarily state or reflect those of the U. S. Department of Transportation.



	Interstate	TOWN
	U.S. Route	Bolton
	Vermont Route	Burlington City
	Minor Arterial or Collector	Cambridge
	Interstate	Charlotte
	US Route Divided	Duxbury
	US Route	Essex
	State Route Paved	Essex Center U.C.
	State Route Unpaved	Essex Junction Village
	Town Highway Paved	Fayston
	Town Highway Unpaved	Ferisburgh
	Unimproved or impassible	Hinesburg
	Discontinued Highway	Huntington
	Town Legal Trail	Jericho
	Winter Road Closure	Jericho Village
	Railroad	Middlesex
	Federal Aid Route	Monkton
	Principal Arterial	Moretown
	Minor Arterial	Morristown
	Minor Collector-not Federal Aid eligible	Richmond
	VTrans Maintenance District Office	Shelburne
	Emergency Response Site	South Burlington City
	Fire Station	St. George
	Law Enforcement	Starksboro
	Hospital	Stowe
	Building	Underhill
	Localities	Waterbury
	State Capital (Montpelier)	Waterbury
	Bridge or Culvert	Waterbury Village
	Water Body	Westford
	Stream or Brook	Williston
	Public Airport	Winooski City
	State Boundary	
	County Boundary	
	Town Boundary	
	Village Boundary	
	Urban Compact Boundary	
	Green Land - State/Municipal	
	Green Mountain National Forest	
	County Subtle	

B20 / C20 State Bridge or Culvert Identifier
 B20 / C20 Town Bridge or Culvert Identifier

Vermont State Plane Coordinate System
 North American Datum of 1983
 SPCS_Zone_Identifier: 4400
 Geodetic Reference System 80
 5,000-meter grid, Easting - Northing



VERMONT COUNTY - TOWN MAP SERIES
CHITTENDEN COUNTY
SHEET 4 OF 5

Prepared by the Vermont Agency of Transportation Mapping Section
 in cooperation with U.S. Department of Transportation Federal Highway Administration
 October 2017

Scale: 1:63,360 (printed size: 36 x 24 inches)

Contact information: Vermont Agency of Transportation
 Division of Policy, Planning and Intermodal Development, Mapping Section
 1 National Life Drive, Montpelier, VT 05633-5001
 telephone: 802-828-2600

This map was funded in part through grants from the Federal Highway Administration, U.S. Department of Transportation. The representation of the authors expressed herein does not necessarily state or reflect those of the U. S. Department of Transportation.

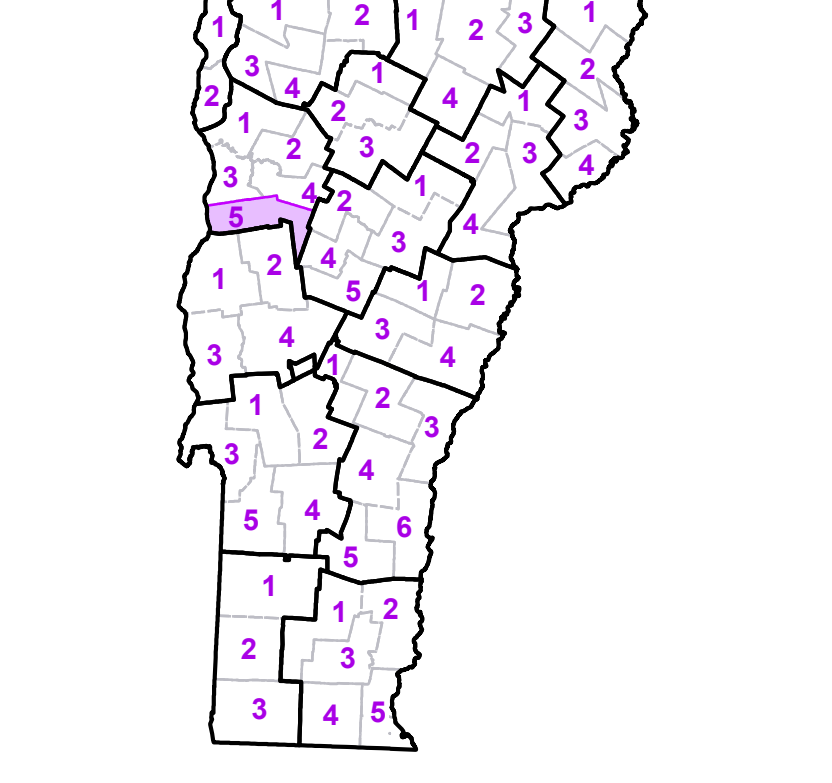


TOWN	
Addison	
Bottom	
Bristol	
Bristol U.C.	
Buells Gore	
Charlotte	
Duxbury	
Fayston	
Ferrisburgh	
Hinesburg	
Huntington	
Lincoln	
Monkton	
New Haven	
Panton	
Richmond	
Shelburne	
South Burlington City	
St. George	
Starksboro	
Vergennes City	
Waitsfield	
Waltham	
Warren	
Waterbury	
Williston	

- Interstate
- U.S. Route
- Vermont Route
- Minor Arterial or Collector
- Interstate
- US Route Divided
- US Route
- State Route Paved
- State Route Unpaved
- Town Highway Paved
- Town Highway Unpaved
- Unimproved or Impassible
- Discontinued Highway
- Town Legal Trail
- Winter Road Closure
- Railroad
- Federal Aid Route
 - Principal Arterial
 - Minor Arterial
 - Major Collector
 - Minor Collector-not Federal Aid eligible
- VTrans Maintenance District Office
- Emergency Response Site
 - Fire Station
 - Law Enforcement
 - Hospital
 - Building
 - Localities
 - State Capital (Montpelier)
 - Bridge or Culvert
 - Water Body
 - Stream or Brook
 - Public Airport
- State Boundary
- County Boundary
- Town Boundary
- Village Boundary
- Urban Compact Boundary
- Green Land - State/Municipal
- Green Mountain National Forest
- County Subtile

B20 / C20 State Bridge or Culvert Identifier
 B20 / C20 Town Bridge or Culvert Identifier

Vermont State Plane Coordinate System
 North American Datum of 1983
 SPCS_Zone_Identifier: 4400
 Geodetic Reference System 80
 5,000-meter grid, Easting - Northing



VERMONT COUNTY - TOWN MAP SERIES
CHITTENDEN COUNTY
SHEET 5 OF 5

Prepared by the
 Vermont Agency of Transportation
 Mapping Section
 in cooperation with
 U.S. Department of Transportation
 Federal Highway Administration
 October 2017

Scale: 1:63,360 (printed size: 36 x 24 inches)

Contact information: Vermont Agency of Transportation
 Division of Policy, Planning and Intermodal Development, Mapping Section
 National Life Drive, Montpelier, VT 05633-5001
 telephone: 802-828-2600

This map was funded in part through grants from the Federal Highway Administration, U.S. Department of Transportation. The representation of the authors expressed herein do not necessarily state or reflect those of the U. S. Department of Transportation.