

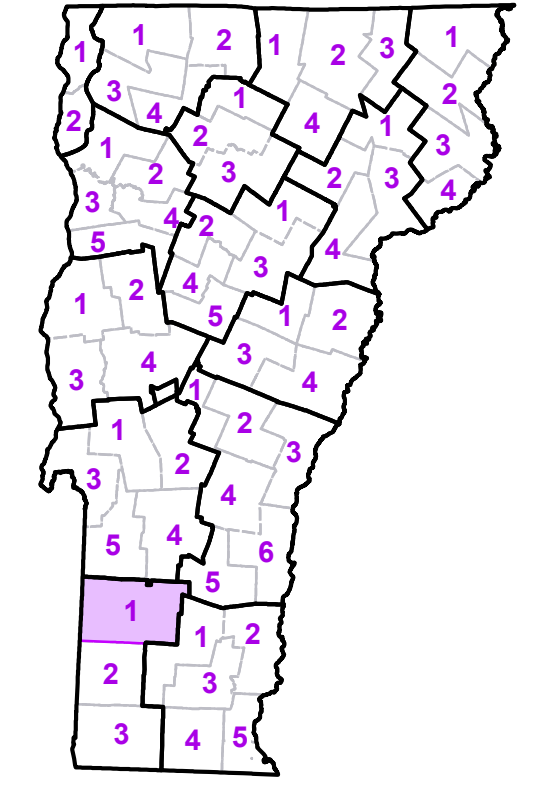
- Interstate
- U.S. Route
- Vermont Route
- Minor Arterial or Collector
- Interstate
- US Route Divided
- US Route
- State Route Paved
- State Route Unpaved
- Town Highway Paved
- Town Highway Unpaved
- Unimproved or Impassible
- Discontinued Highway
- Town Legal Trail
- Winter Road Closure
- Railroad
- Federal Aid Route
- Principal Arterial
- Minor Arterial
- Major Collector
- Minor Collector-not Federal Aid eligible
- VTrans Maintenance District Office

- Emergency Response Site
- Fire Station
- Law Enforcement
- Hospital
- Building
- Localities
- State Capital (Montpelier)
- Bridge or Culvert
- Water Body
- Stream or Brook
- Public Airport
- County Boundary
- Town Boundary
- Village Boundary
- Urban Compact Boundary
- Public Land - State/Municipal
- Green Mountain National Forest
- County Subtile

TOWN
Andover
Arlington
Arlington U.C.
Danby
Dorset
Jamaica
Landgrove
Londonderry
Ludlow
Manchester
Manchester Center Depot U.C.
Manchester Village
Mount Holly
Mount Tabor
Pawlet
Peru
Rupert
Sandgate
Stratton
Sunderland
Weston
Winham
Winhall

B20 / C20 State Bridge or Culvert Identifier
 B20 / C20 Town Bridge or Culvert Identifier

Vermont State Plane Coordinate System
 North American Datum of 1983
 SPCS_Zone_Identifier: 4400
 Geodetic Reference System 80
 5,000-meter grid, Easting - Northing



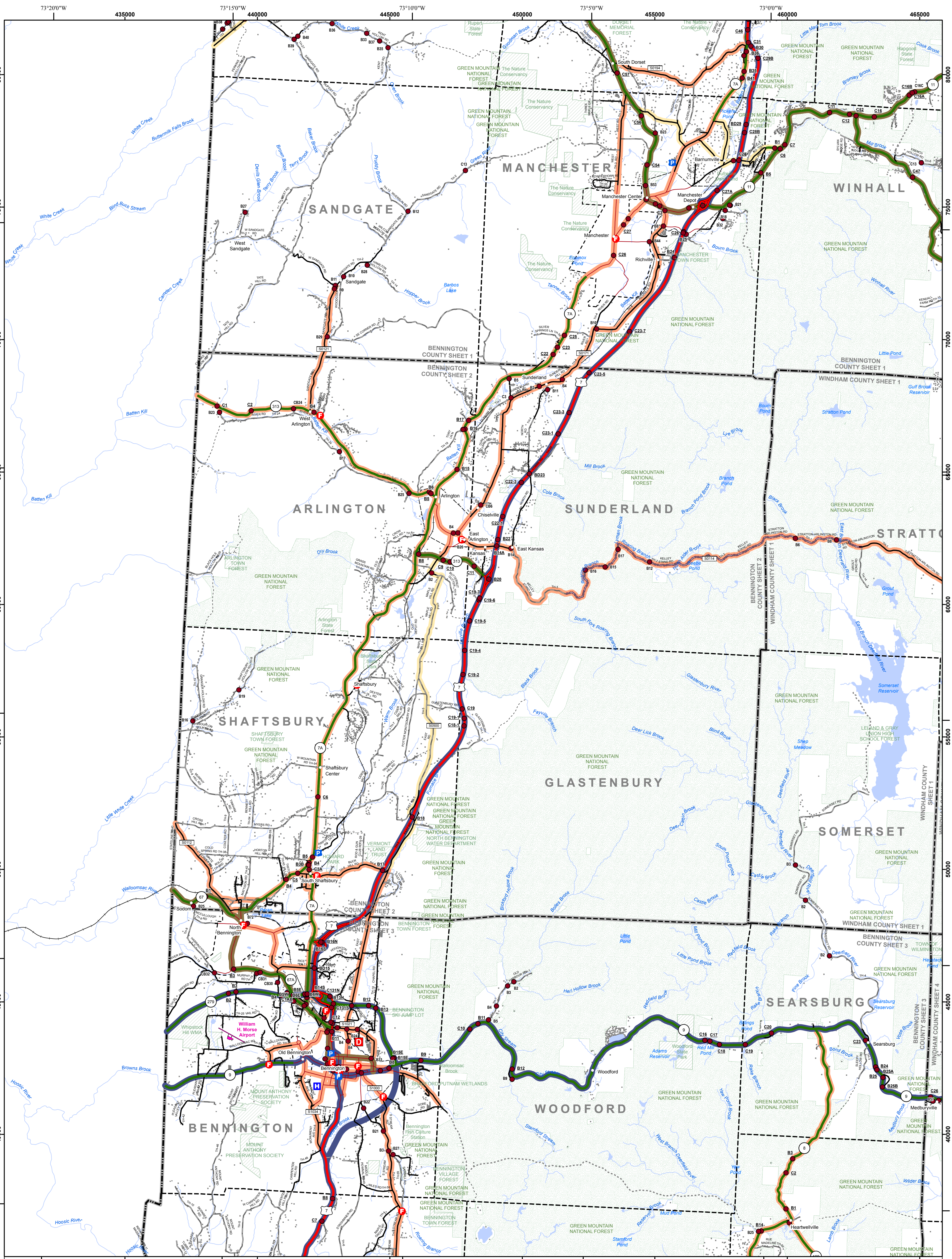
VERMONT COUNTY - TOWN MAP SERIES
BENNINGTON COUNTY
SHEET 1 OF 3

Prepared by the
 Vermont Agency of Transportation
 Mapping Section
 in cooperation with
 U.S. Department of Transportation
 Federal Highway Administration
 October 2017

Scale: 1:63,360 (printed size: 36 x 24 inches)

Contact information: Vermont Agency of Transportation
 Division of Policy, Planning and Intermodal Development, Mapping Section
 1 National Life Drive, Montpelier, VT 05633-5001
 Telephone: 802-828-2600

This map was funded in part through grants from the Federal Highway Administration, U.S. Department of Transportation. The representation of the authors expressed herein do not necessarily state or reflect those of the U. S. Department of Transportation.

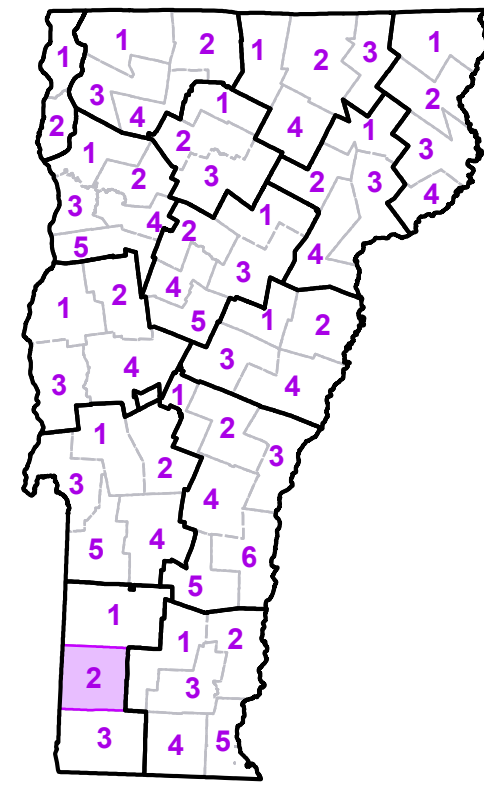


- Interstate
- U.S. Route
- Vermont Route
- Minor Arterial or Collector
- Interstate
- US Route Divided
- US Route
- State Route Paved
- State Route Unpaved
- Town Highway Paved
- Town Highway Unpaved
- Unimproved or Impassible
- Discontinued Highway
- Town Legal Trail
- Winter Road Closure
- Railroad

- Federal Aid Route**
- Principal Arterial
- Minor Arterial
- Major Collector
- Minor Collector-not Federal Aid eligible
- Emergency Response Site
- Fire Station
- Law Enforcement
- Hospital
- Building
- Localities
- State Capital (Montpelier)
- Bridge or Culvert
- Water Body
- Stream or Brook
- Public Airport

- Political Boundary**
 - State Boundary
 - County Boundary
 - Town Boundary
 - Village Boundary
 - Urban Compact Boundary
 - Public Land - State/Municipal
 - Green Mountain National Forest
 - County Subtle
- B20 / C20 State Bridge or Culvert Identifier**
B2 / C20 Town Bridge or Culvert Identifier
- Vermont State Plane Coordinate System
 North American Datum of 1983
 SPCS Zone Identifier: 4400
 Geocentric Reference System 80
 5,000-meter grid, Easting - Northing

TOWN	TOWN	TOWN
Arlington	Peru	Wilmington
Arlington U.C.	Pownal	Winhall
Bennington	Readsboro	Woodford
Bennington U.C.	Rupert	
Dorset	Sandgate	
Dover	Searsburg	
Glastenburg	Shaftsbury	
Manchester	Somerset	
Manchester Center Depot U.C.	Stamford	
Manchester Village	Stratton	
North Bennington Village	Sunderland	
Old Bennington Village	Whitingham	



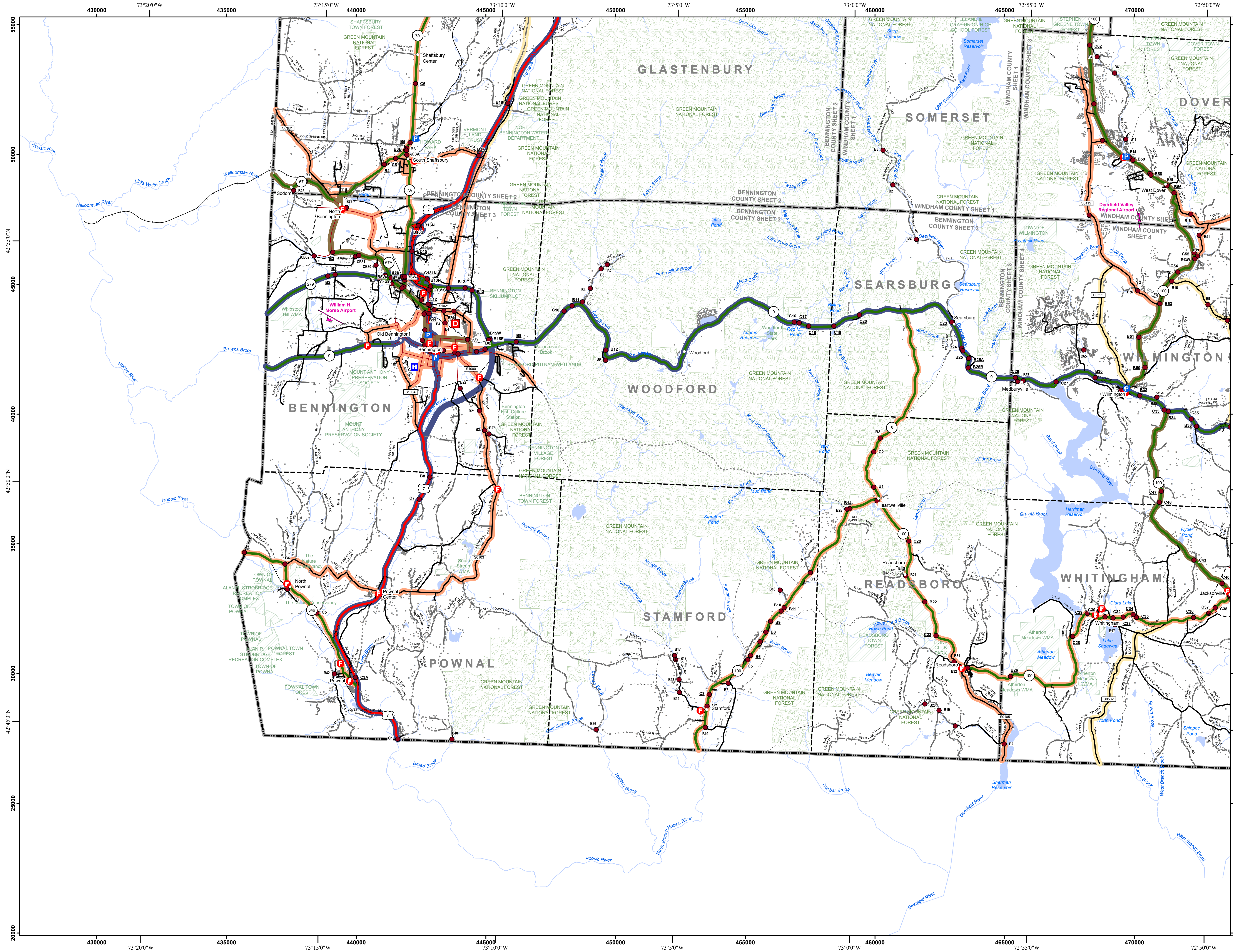
VERMONT COUNTY - TOWN MAP SERIES
BENNINGTON COUNTY
SHEET 2 OF 3

Prepared by the
 Vermont Agency of Transportation
 Mapping Section
 in cooperation with
 U.S. Department of Transportation
 Federal Highway Administration
 October 2017

0 1 2
 Miles

Scale: 1:63360 (printed size 24 x 36 inches)

This map was funded in part through grants from the Federal Highway Administration, U.S. Department of Transportation. The representation of the authors expressed herein do not necessarily state or reflect those of the U.S. Department of Transportation.



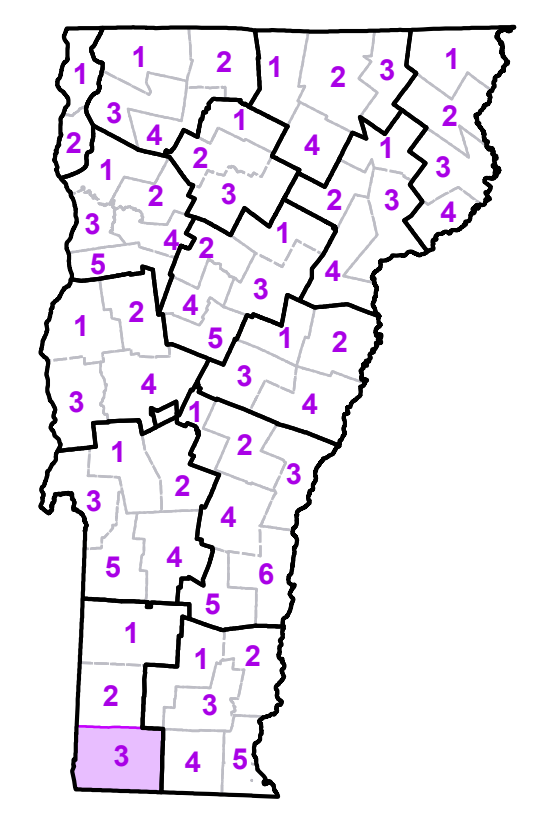
- Interstate
- U.S. Route
- Vermont Route
- Minor Arterial or Collector
- Interstate
- US Route Divided
- US Route
- State Route Paved
- State Route Unpaved
- Town Highway Paved
- Town Highway Unpaved
- Unimproved or Impassible
- Discontinued Highway
- Town Legal Trail
- Winter Road Closure
- Railroad

- Federal Aid Route**
- Principal Arterial
 - Minor Arterial
 - Major Collector
 - Minor Collector-not Federal Aid eligible
- VT Trans Maintenance District Office**
- Fire Station
 - Law Enforcement
 - Hospital
 - Building
 - Localities
 - State Capital (Montpelier)
 - Bridge or Culvert
 - Water Body
 - Stream or Brook
 - Public Airport
- Emergency Response Site**
- Fire Station
 - Law Enforcement
 - Hospital
 - Building
 - Localities
 - State Capital (Montpelier)
 - Bridge or Culvert
 - Water Body
 - Stream or Brook
 - Public Airport
- Boundary Symbols**
- State Boundary
 - County Boundary
 - Town Boundary
 - Village Boundary
 - Urban Compact Boundary
 - Public Land - State/Municipal
 - Green Mountain National Forest
 - County Subtile

TOWN
Bennington
Bennington U.C.
Dover
Glasterbury
Jacksonville Village
North Bennington Village
Old Bennington Village
Pownal
Readsboro
Searsburg
Shaftsbury
Somerset
Stamford
Stratton
Wardsboro
Whitingham
Wilmington
Woodford

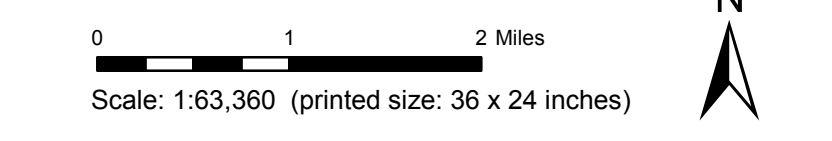
B20 / C20 State Bridge or Culvert Identifier
B20 / C20 Town Bridge or Culvert Identifier

Vermont State Plane Coordinate System
 North American Datum of 1983
 SPCS_Zone_Identifier: 4400
 Geodetic Reference System 80
 5,000-meter grid, Easting - Northing



VERMONT COUNTY - TOWN MAP SERIES
BENNINGTON COUNTY
SHEET 3 OF 3

Prepared by the
Vermont Agency of Transportation
 Mapping Section
 in cooperation with
U.S. Department of Transportation
 Federal Highway Administration
 October 2017



Contact information: Vermont Agency of Transportation
 Division of Policy, Planning and Intermodal Development, Mapping Section
 1 National Life Drive, Montpelier, VT 05633-5001
 Telephone: 802-828-2600

This map was funded in part through grants from the Federal Highway Administration, U.S. Department of Transportation. The representation of the authors expressed herein does not necessarily state or reflect those of the U.S. Department of Transportation.