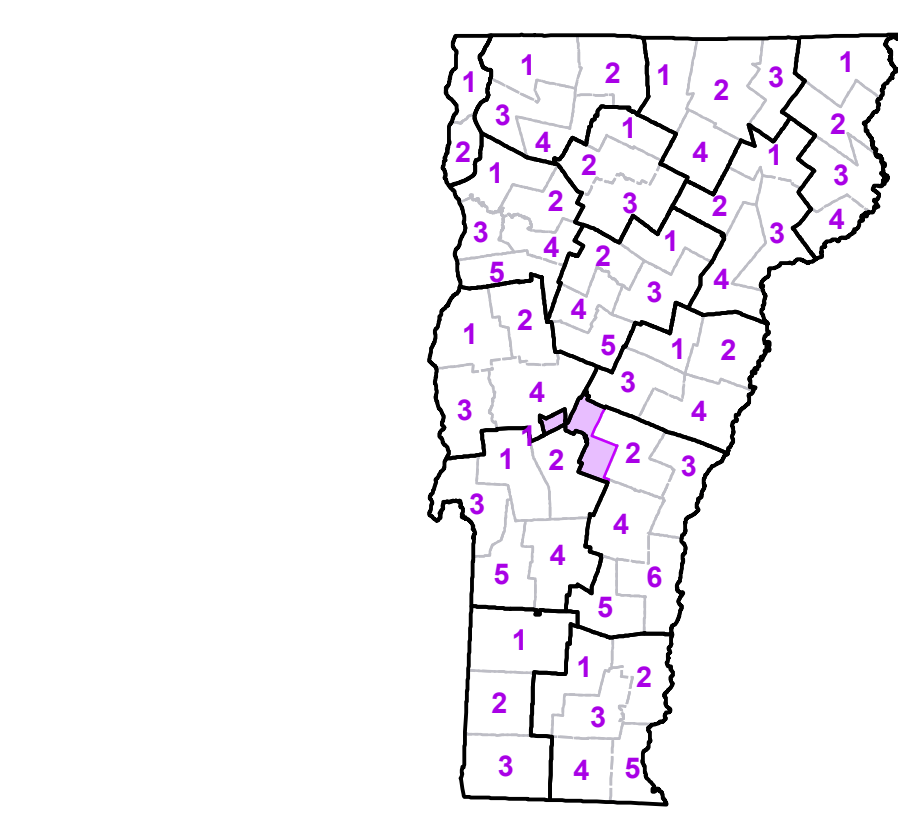


- Interstate
- U.S. Route
- Vermont Route
- Minor Arterial or Collector
- Federal Aid Route
- Principal Arterial
- Minor Arterial
- Major Collector
- Minor Collector-not Federal Aid eligible
- VTrans District Office
- Emergency Response Site
- Fire Station
- Law Enforcement
- Hospital
- Building
- Cemetery
- Localities
- State Capital (Montpelier)
- Bridge or Culvert
- Water Body
- Stream or Brook
- Public Land
- Public Airport
- State Boundary
- County Boundary
- Town Boundary
- Village Boundary
- Urban Compact Boundary
- County Subtle

TOWN	TOWN	TOWN
Barnard	Mendon	Rutland City
Bethel	Pittsfield	Salisbury
Braintree	Pittsford	Stockbridge
Brandon	Proctor	West Rutland
Bridgewater	Proctor U.C.	Woodstock
Brookfield	Randolph	
Chittenden	Randolph U.C.	
Goshen	Ripton	
Granville	Rochester	
Hancock	Roxbury	
Killington	Royalton	
Leicester	Rutland	



**VERMONT COUNTY - TOWN MAP SERIES**  
**WINDSOR COUNTY**  
**SHEET 1 OF 6**

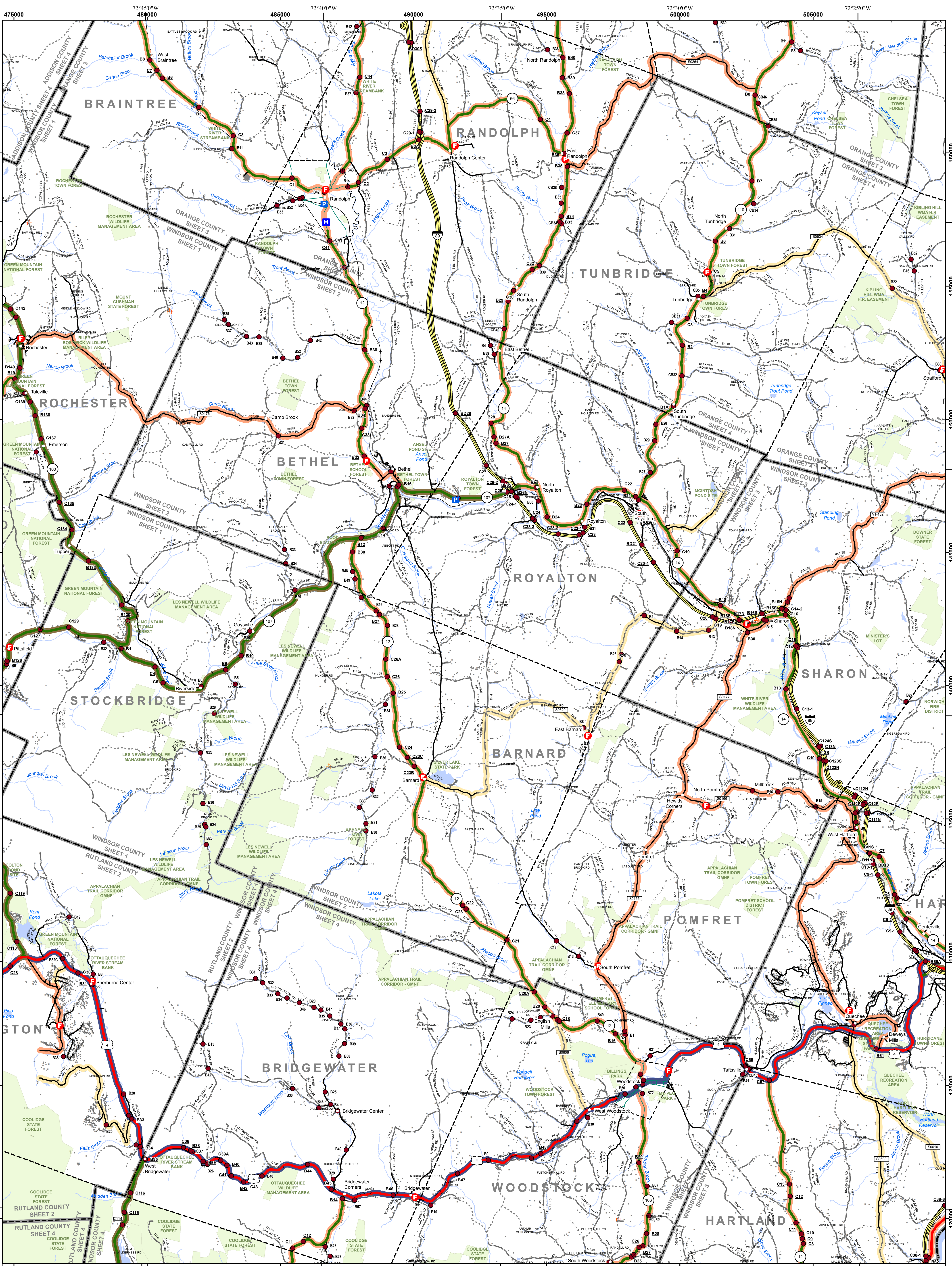
Prepared by the  
**Vermont Agency of Transportation Mapping Section**  
 in cooperation with  
**U.S. Department of Transportation Federal Highway Administration**  
 July 2015

0 1 2  
 Miles

Scale: 1:63360 (printed size 24 x 36 inches)

Contact Information: Vermont Agency of Transportation  
 Division of Policy, Planning and Intermodal Development, Mapping Section  
 1 National Life Drive, Montpelier, VT 05633-5001, Telephone: 802-828-2600

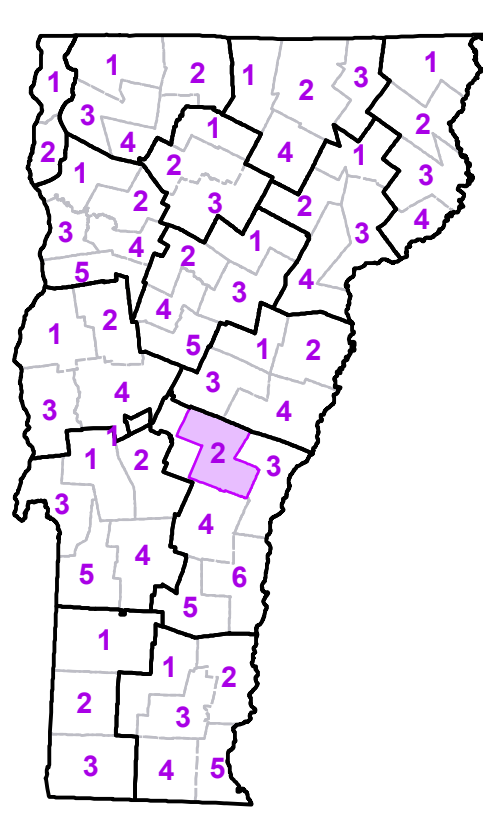
This map was funded in part through grants from the Federal Highway Administration, U.S. Department of Transportation. The representation of the authors expressed herein do not necessarily state or reflect those of the U.S. Department of Transportation.



- Interstate
- U.S. Route
- Vermont Route
- Minor Arterial or Collector
- Federal Aid Route
- Principal Arterial
- Minor Arterial
- Major Collector
- Minor Collector-not Federal Aid eligible
- VTrans District Office
- Emergency Response Site
- Fire Station
- Law Enforcement
- Hospital
- Building
- Cemetery
- Localities
- State Capital (Montpelier)
- Bridge or Culvert
- Water Body
- Stream or Brook
- Public Land
- Public Airport
- State Boundary
- County Boundary
- Town Boundary
- Village Boundary
- Urban Compact Boundary
- County Subtle
- B20 / C20 State Bridge or Culvert Identifier
- B20 / C20 Town Bridge or Culvert Identifier

Vermont State Plane Coordinate System  
 North American Datum of 1983  
 SPCS Zone Identifier: 4400  
 Geodetic Reference System 80  
 5,000-meter grid, Easting - Northing

TOWN	TOWN	TOWN
Barnard	Norwich	Tunbridge
Bethel	Pittsfield	Vershire
Braintree	Plymouth	Woodstock
Bridgewater	Pomfret	Woodstock Village
Brookfield	Randolph	
Chelsea	Randolph U.C.	
Granville	Rochester	
Hancock	Royalton	
Hartford	Sharon	
Hartland	Shrewsbury	
Killington	Stockbridge	
Mendon	Stratford	



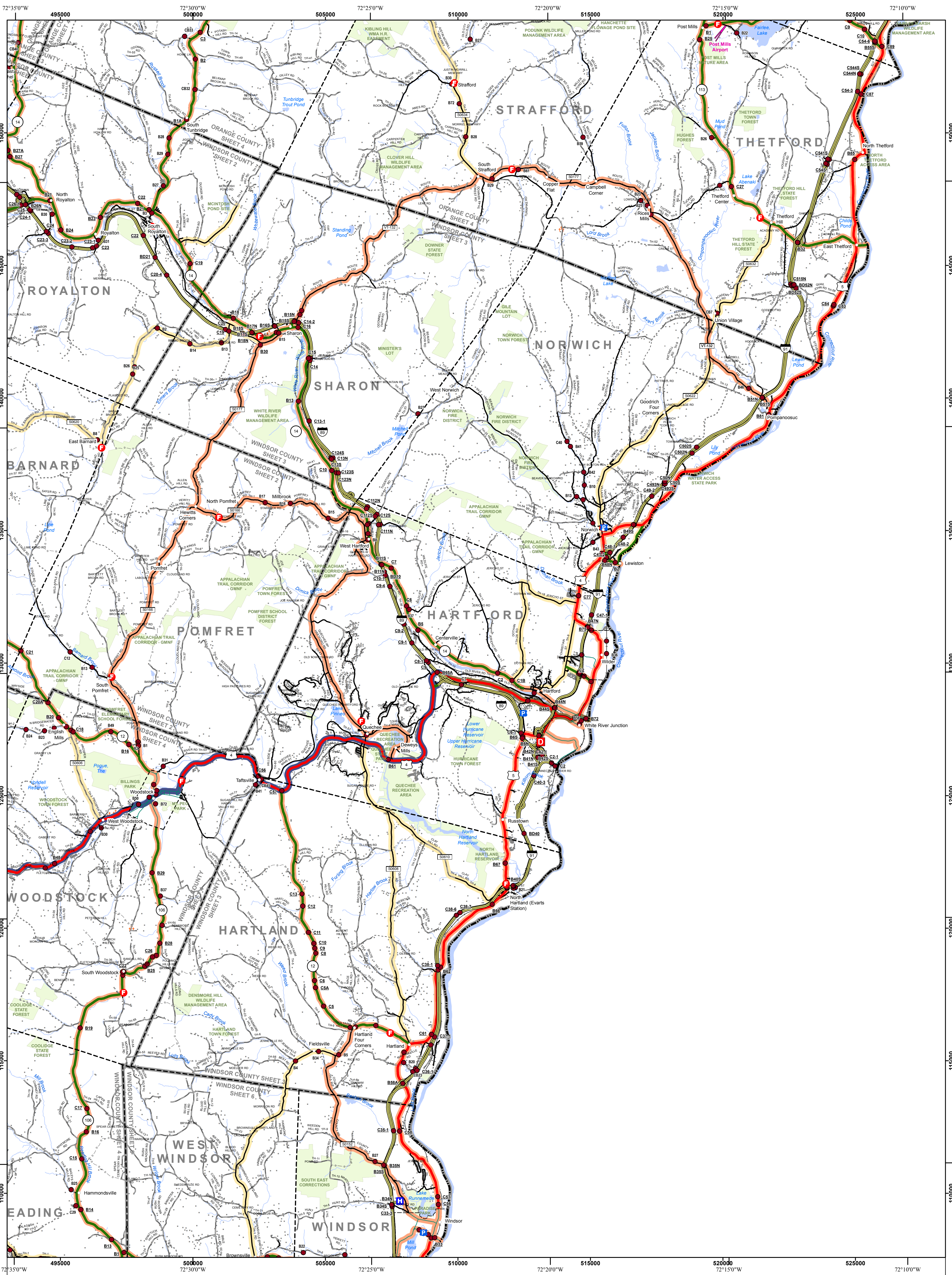
**VERMONT COUNTY - TOWN MAP SERIES**  
**WINDSOR COUNTY SHEET 2 OF 6**

Prepared by the  
**Vermont Agency of Transportation Mapping Section**  
 in cooperation with  
**U.S. Department of Transportation Federal Highway Administration**  
 July 2015

Scale: 1:63360 (printed size 24 x 36 inches)

Contact Information: Vermont Agency of Transportation  
 Division of Policy, Planning and Intermodal Development, Mapping Section  
 1 National Life Drive, Montpelier, VT 05633-5001, Telephone: 802-828-2600

This map was funded in part through grants from the Federal Highway Administration, U.S. Department of Transportation. The representation of the authors expressed herein do not necessarily state or reflect those of the U.S. Department of Transportation.



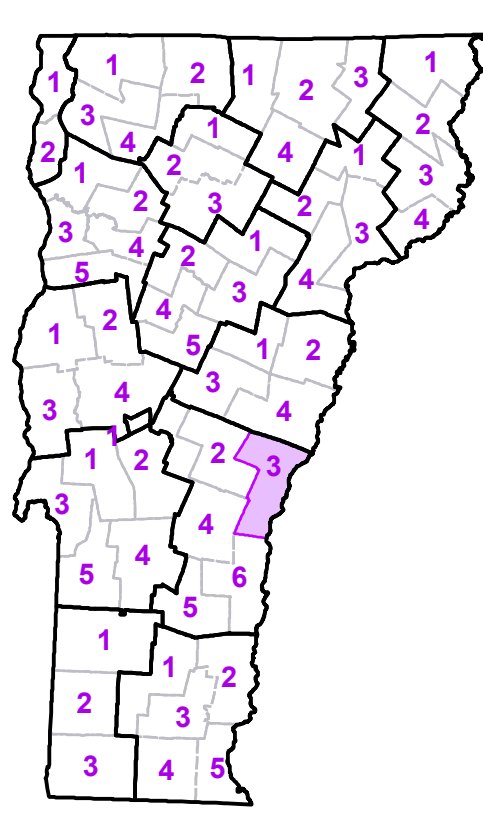
- Interstate
- U.S. Route
- Vermont Route
- Minor Arterial or Collector
- Interstate
- US Route Divided
- US Route
- State Route Paved
- State Route Unpaved
- Town Highway Paved
- Town Highway Unpaved
- Unimproved or Impassible
- Discontinued Highway
- Town Legal Trail
- Railroad

- Federal Aid Route
- Principal Arterial
- Minor Arterial
- Major Collector
- Minor Collector-not Federal Aid eligible
- VTrans District Office
- Emergency Response Site
- Fire Station
- Law Enforcement
- Hospital
- Building
- Cemetery
- Localities
- State Capital (Montpelier)
- Bridge or Culvert
- Water Body
- Stream or Brook

- Public Land
- Public Airport
- State Boundary
- County Boundary
- Town Boundary
- Village Boundary
- Urban Compact Boundary
- County Subtle
- B20 / C20 State Bridge or Culvert Identifier
- B20 / C20 Town Bridge or Culvert Identifier

Vermont State Plane Coordinate System  
 North American Datum of 1983  
 SPCS Zone Identifier: 4400  
 Geodetic Reference System 80  
 5,000-meter grid, Easting - Northing

TOWN	TOWN
Barnard	Stratford
Bethel	Thetford
Bridgewater	Tunbridge
Fairlee	West Fairlee
Hartford	West Windsor
Hartland	White River Jct. Urban Compact
Norwich	Wilder Urban Compact
Pomfret	Windsor
Randolph	Windsor U.C.
Reading	Woodstock
Royalton	Woodstock Village
Sharon	



**VERMONT  
 COUNTY - TOWN MAP SERIES  
 WINDSOR COUNTY  
 SHEET 3 OF 6**

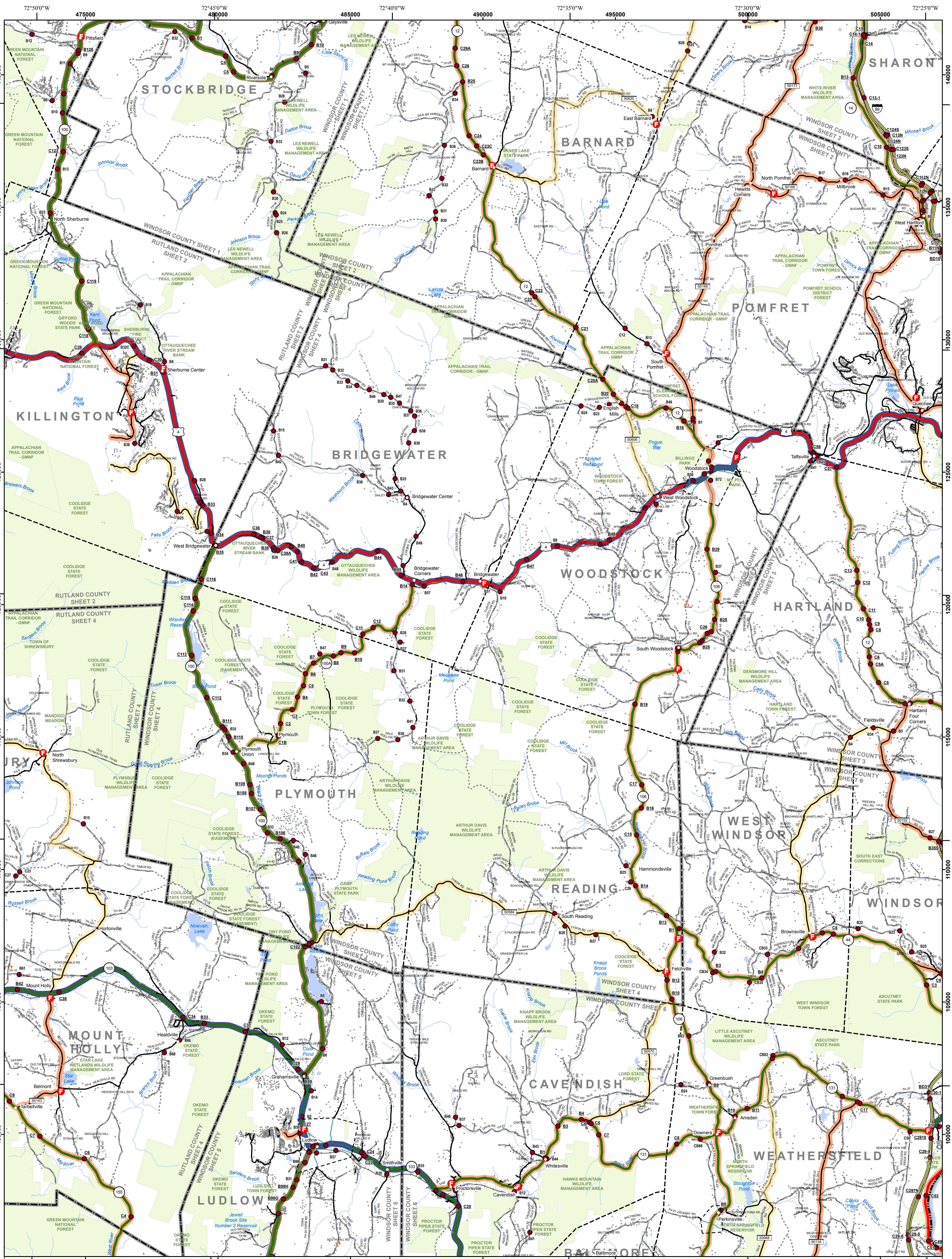
Prepared by the  
**Vermont Agency of Transportation  
 Mapping Section**  
 in cooperation with  
**U.S. Department of Transportation  
 Federal Highway Administration**  
 July 2015

0 1 2  
 Miles

Scale: 1:63360 (printed size 24 x 36 inches)

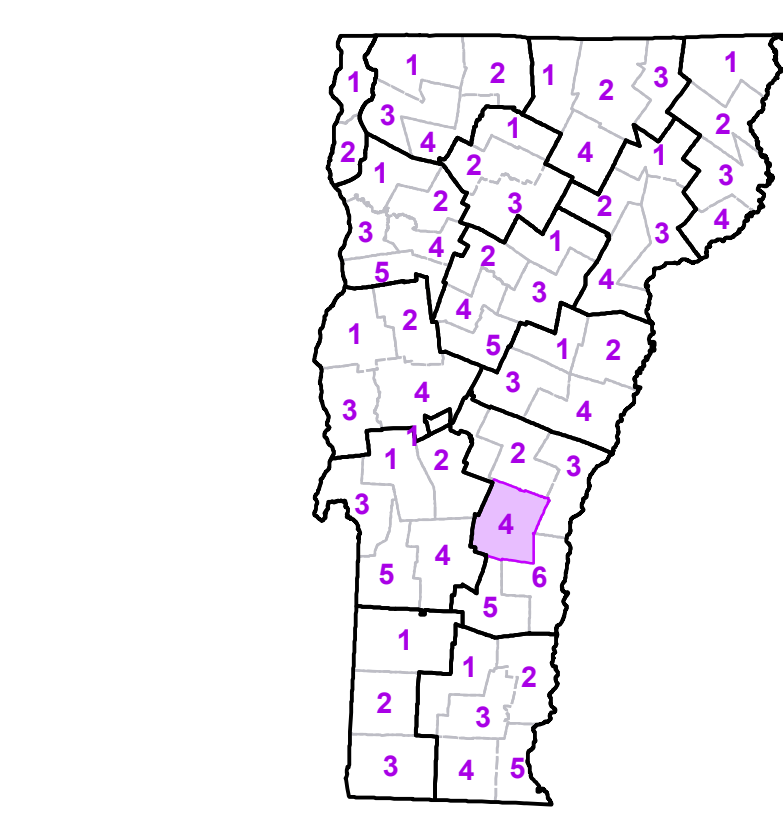
Contact Information: Vermont Agency of Transportation  
 Division of Policy, Planning and Intermodal Development, Mapping Section  
 1 National Life Drive, Montpelier, VT 05633-5001, Telephone: 802-828-2600

This map was funded in part through grants from the Federal Highway Administration, U.S. Department of Transportation. The representation of the authors expressed herein do not necessarily state or reflect those of the U.S. Department of Transportation.



- Interstate
- U.S. Route
- Vermont Route
- Minor Arterial or Collector
- Interstate
- US Route Divided
- US Route
- State Route Paved
- State Route Unpaved
- Town Highway Paved
- Town Highway Unpaved
- Unimproved or Impassible
- Discontinued Highway
- Town Legal Trail
- Railroad
- Federal Aid Route
- Principal Arterial
- Minor Arterial
- Major Collector
- Minor Collector-Not Federal Aid eligible
- VTrans District Office
- Emergency Response Site
- Fire Station
- Law Enforcement
- Hospital
- Building
- Cemetery
- Localities
- State Capital (Montpelier)
- Bridge or Culvert
- Water Body
- Stream or Brook
- Public Land
- Public Airport
- State Boundary
- County Boundary
- Town Boundary
- Village Boundary
- Urban Compact Boundary
- County Subtle

TOWN	TOWN	TOWN
Baltimore	Norwich	Weston
Barnard	Perkinsville Village	Windsor
Bridgewater	Pittsfield	Woodstock
Cavendish	Plymouth	Woodstock Village
Chittenden	Pomfret	
Hartford	Reading	
Hartland	Royalton	
Killington	Sharon	
Ludlow	Shrewsbury	
Ludlow Village	Stockbridge	
Mendon	Weathersfield	
Mount Holly	West Windsor	



**VERMONT COUNTY - TOWN MAP SERIES**  
**WINDSOR COUNTY**  
**SHEET 4 OF 6**

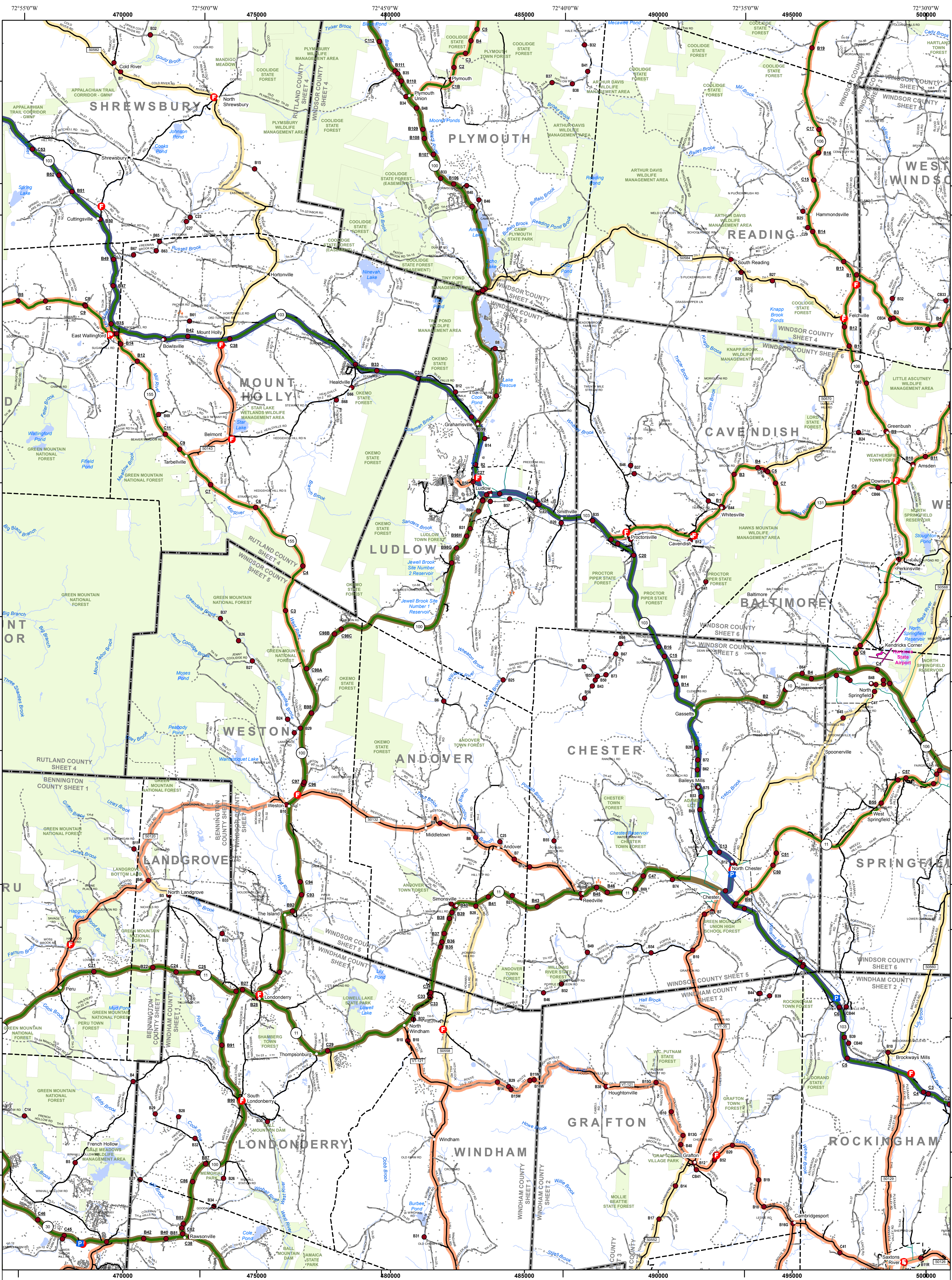
Prepared by the  
**Vermont Agency of Transportation**  
 Mapping Section  
 in cooperation with  
**U.S. Department of Transportation**  
 Federal Highway Administration  
 July 2015

0 1 2  
 Miles

Scale: 1:63360 (printed size 24 x 36 inches)

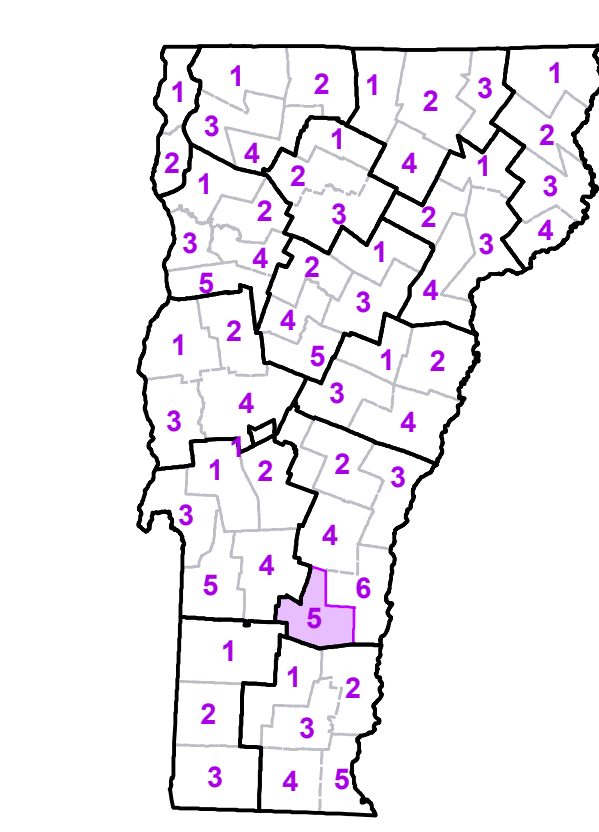
Contact Information: Vermont Agency of Transportation  
 Division of Policy, Planning and Intermodal Development, Mapping Section  
 1 National Life Drive, Montpelier, VT 05633-5001, Telephone: 802-828-2600

This map was funded in part through grants from the Federal Highway Administration, U.S. Department of Transportation. The representation of the authors expressed herein do not necessarily state or reflect those of the U.S. Department of Transportation.



- Interstate
- U.S. Route
- Vermont Route
- Minor Arterial or Collector
- Federal Aid Route
  - Principal Arterial
  - Minor Arterial
  - Major Collector
  - Minor Collector-not Federal Aid eligible
  - VTrans District Office
- Emergency Response Site
  - Fire Station
  - Law Enforcement
  - Hospital
  - Building
  - Cemetery
  - Localities
  - State Capital (Montpelier)
  - Bridge or Culvert
  - Water Body
  - Stream or Brook
- Public Land
- State Airport
- County Boundary
- Town Boundary
- Village Boundary
- Urban Compact Boundary
- County Subtle
- B20 / C20 State Bridge or Culvert Identifier
- B20 / C20 Town Bridge or Culvert Identifier

TOWN	TOWN	TOWN
Andover	Ludlow Village	Springfield U.C.
Athens	Mount Holly	Townshend
Baltimore	Mount Tabor	Wallingford
Cavendish	North Springfield U.C.	Weathersfield
Chester	Perkinsville Village	West Windsor
Chester-Chester Depot U.C.	Peru	Weston
Grafton	Plymouth	Windham
Hartland	Reading	Winhall
Jamaica	Rockingham	Woodstock
Landgrove	Saxtons River Village	
Londonderry	Shrewsbury	
Ludlow	Springfield	



**VERMONT COUNTY - TOWN MAP SERIES**  
**WINDSOR COUNTY**  
**SHEET 5 OF 6**

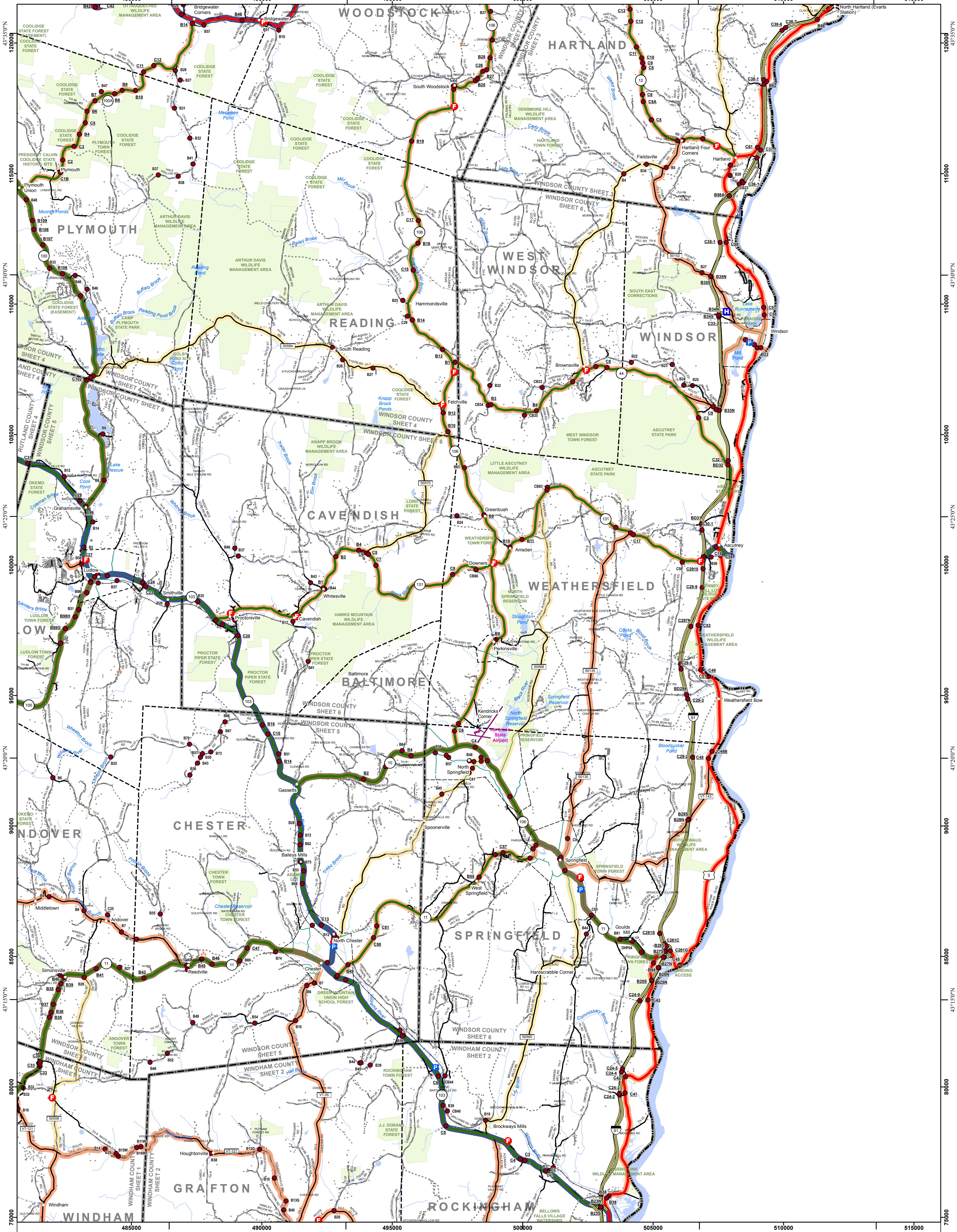
Prepared by the  
**Vermont Agency of Transportation**  
 Mapping Section  
 in cooperation with  
**U.S. Department of Transportation**  
 Federal Highway Administration  
 July 2015

Scale: 1:63360 (printed size 24 x 36 inches)

0 1 2  
 Miles

Contact Information: Vermont Agency of Transportation  
 Division of Policy, Planning and Intermodal Development, Mapping Section  
 1 National Life Drive, Montpelier, VT 05633-5001, Telephone: 802-828-2600

This map was funded in part through grants from the Federal Highway Administration, U.S. Department of Transportation. The representation of the authors expressed herein do not necessarily state or reflect those of the U.S. Department of Transportation.

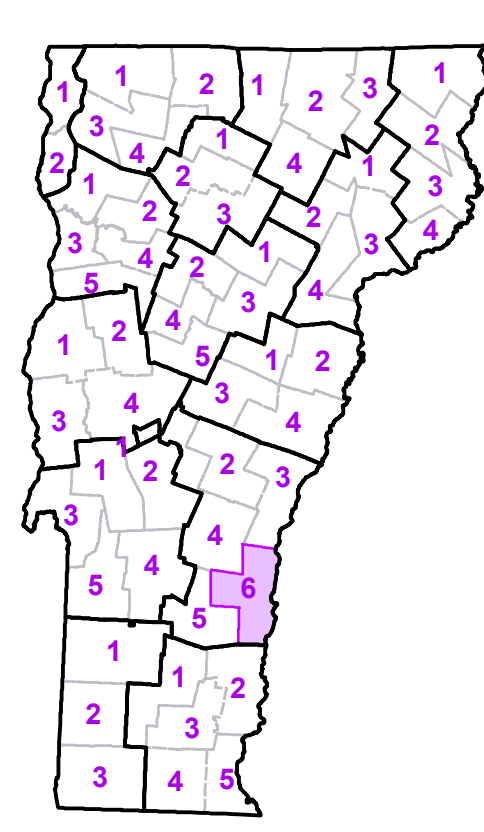


- Interstate
- U.S. Route
- Vermont Route
- Minor Arterial or Collector
- Federal Aid Route
- Principal Arterial
- Minor Arterial
- Major Collector
- Minor Collector-not Federal Aid eligible
- VTrans District Office
- Emergency Response Site
- Interstate
- US Route Divided
- US Route
- State Route Paved
- State Route Unpaved
- Town Highway Paved
- Town Highway Unpaved
- Unimproved or Impassible
- Discontinued Highway
- Town Legal Trail
- Railroad
- Public Land
- State Airport
- State Boundary
- County Boundary
- Town Boundary
- Village Boundary
- Urban Compact Boundary
- County Subtle
- Fire Station
- Law Enforcement
- Hospital
- Building
- Cemetery
- Localities
- State Capital (Montpelier)
- Bridge or Culvert
- Water Body
- Stream or Brook

**B20 / C20** State Bridge or Culvert Identifier  
**B20 / C20** Town Bridge or Culvert Identifier

Vermont State Plane Coordinate System  
 North American Datum of 1983  
 SPCS Zone Identifier 4400  
 Geodetic Reference System 80  
 5,000-meter grid, Easting - Northing

TOWN	TOWN	TOWN
Andover	North Springfield U.C.	Woodstock
Baltimore	Perkinsville Village	
Bridgewater	Plymouth	
Cavendish	Reading	
Chester	Rockingham	
Chester-Chester Depot U.C.	Springfield	
Grafton	Springfield U.C.	
Hartland	Weathersfield	
Londonderry	West Windsor	
Ludlow	Windham	
Ludlow Village	Windsor	
Mount Holly	Windsor U.C.	



**VERMONT COUNTY - TOWN MAP SERIES**  
**WINDSOR COUNTY**  
**SHEET 6 OF 6**

Prepared by the  
**Vermont Agency of Transportation**  
 Mapping Section  
 in cooperation with  
**U.S. Department of Transportation**  
 Federal Highway Administration  
 July 2015

0 1 2  
 Miles

Scale: 1:63360 (printed size 24 x 36 inches)

Contact Information: Vermont Agency of Transportation  
 Division of Policy, Planning and Intermodal Development, Mapping Section  
 1 National Life Drive, Montpelier, VT 05633-5001, Telephone: 802-828-2600

This map was funded in part through grants from the Federal Highway Administration, U.S. Department of Transportation. The representation of the authors expressed herein do not necessarily state or reflect those of the U.S. Department of Transportation.