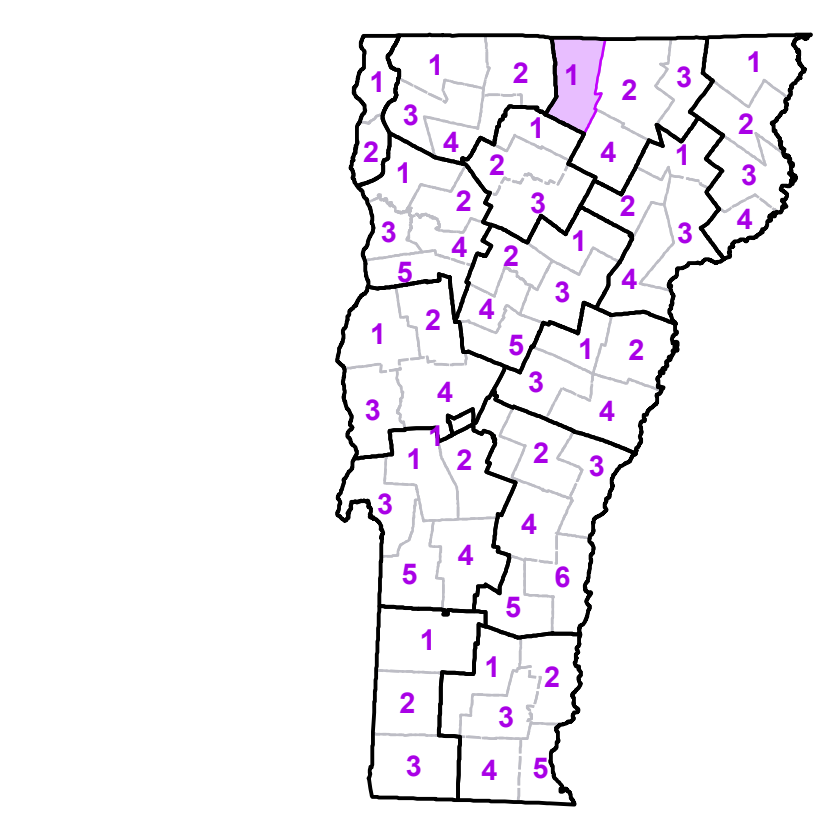


- Interstate
- U.S. Route
- Vermont Route
- Minor Arterial or Collector
- Interstate
- US Route Divided
- US Route
- State Route Paved
- State Route Unpaved
- Town Highway Paved
- Town Highway Unpaved
- Unimproved or Impassible
- Discontinued Highway
- Town Legal Trail
- Railroad

- Federal Aid Route
- Principal Arterial
- Minor Arterial
- Major Collector
- Minor Collector-not Federal Aid eligible
- VTrans District Office
- Emergency Response Site
- Fire Station
- Law Enforcement
- Hospital
- Building
- Cemetery
- Localities
- State Capital (Montpelier)
- Bridge or Culvert
- Water Body
- Stream or Brook

TOWN	TOWN	TOWN
Albany	Hyde Park	Westfield
Albany Village	Irasburg	
Barton	Jay	
Belvidere	Johnson	
Berkshire	Lowell	
Coventry	Montgomery	
Craftsbury	Newport	
Derby	Newport City	
Eden	North Troy Village	
Enosburg	Richford	
Glover	Richford U.C.	
Greensboro	Troy	



VERMONT COUNTY - TOWN MAP SERIES
ORLEANS COUNTY
SHEET 1 OF 4

Prepared by the
Vermont Agency of Transportation
 Mapping Section
 in cooperation with
U.S. Department of Transportation
 Federal Highway Administration
 July 2015

Scale: 1:63360 (printed size 24 x 36 inches)

Contact Information: Vermont Agency of Transportation
 Division of Policy, Planning and Intermodal Development, Mapping Section
 1 National Life Drive, Montpelier, VT 05633-5001, Telephone: 802-828-2600

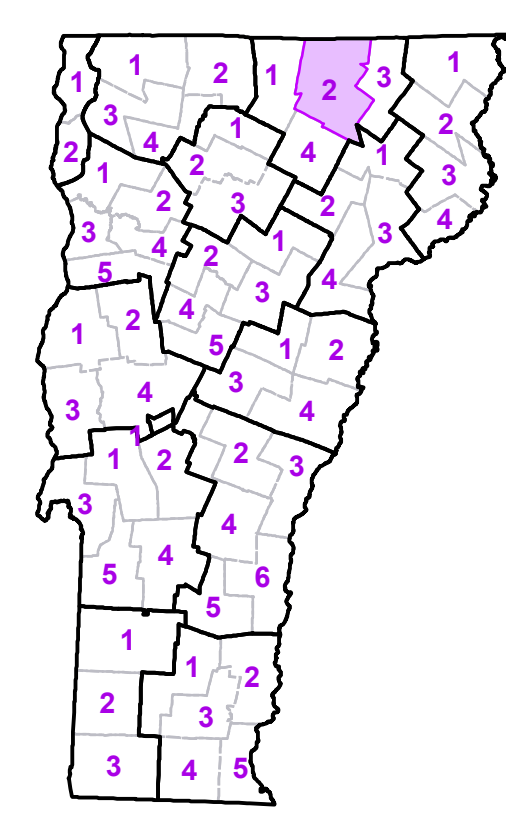
This map was funded in part through grants from the Federal Highway Administration, U.S. Department of Transportation. The representation of the authors expressed herein do not necessarily state or reflect those of the U.S. Department of Transportation.



- Interstate
- U.S. Route
- Vermont Route
- Minor Arterial or Collector
- Federal Aid Route
- Principal Arterial
- Minor Arterial
- Major Collector
- Minor Collector-not Federal Aid eligible
- VTrans District Office
- Emergency Response Site
- Fire Station
- Law Enforcement
- Hospital
- Building
- Cemetery
- Localities
- State Capital (Montpelier)
- Bridge or Culvert
- Water Body
- Stream or Brook
- Public Land
- Public Airport
- State Boundary
- County Boundary
- Town Boundary
- Village Boundary
- Urban Compact Boundary
- County Subtle
- B20 / C20 State Bridge or Culvert Identifier
- B20 / C20 Town Bridge or Culvert Identifier

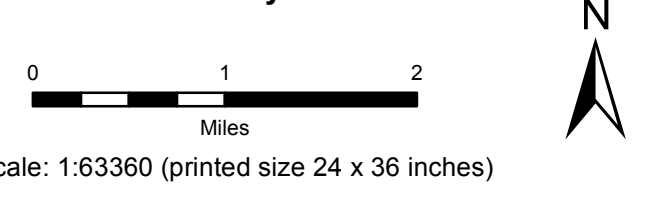
Vermont State Plane Coordinate System
 North American Datum of 1983
 SPCS Zone Identifier: 4400
 Geodetic Reference System 80
 5,000-meter grid, Easting - Northing

TOWN	TOWN	TOWN
Albany	Eden	Orleans Village
Albany Village	Glover	Sheffield
Barton	Greensboro	Sutton
Barton Village	Holland	Troy
Brownington	Irasburg	West Burke Village
Burke	Jay	Westfield
Charleston	Lowell	Westmore
Coventry	Morgan	
Craftsbury	Newark	
Derby	Newport	
Derby Center Village	Newport City	
Derby Line Village	North Troy Village	



VERMONT COUNTY - TOWN MAP SERIES
ORLEANS COUNTY
SHEET 2 OF 4

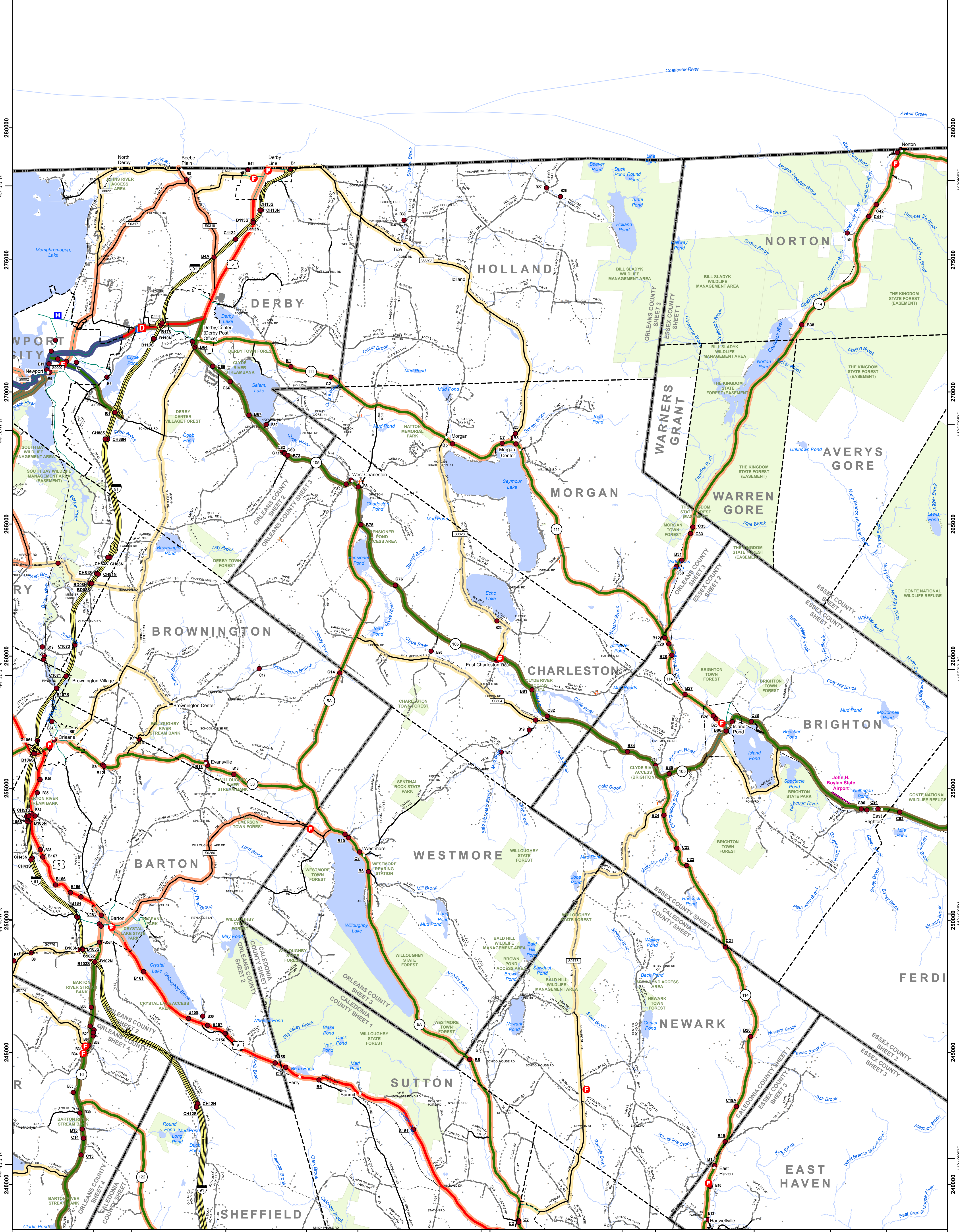
Prepared by the
Vermont Agency of Transportation
 Mapping Section
 in cooperation with
U.S. Department of Transportation
 Federal Highway Administration
 July 2015



Contact Information: Vermont Agency of Transportation
 Division of Policy, Planning and Intermodal Development, Mapping Section
 1 National Life Drive, Montpelier, VT 05633-5001, Telephone: 802-828-2600

This map was funded in part through grants from the Federal Highway Administration, U.S. Department of Transportation. The representation of the authors expressed herein do not necessarily state or reflect those of the U.S. Department of Transportation.

525000 72°10'0"W 530000 72°5'0"W 535000 72°0'0"W 540000 71°55'0"W 545000 71°50'0"W 550000 555000

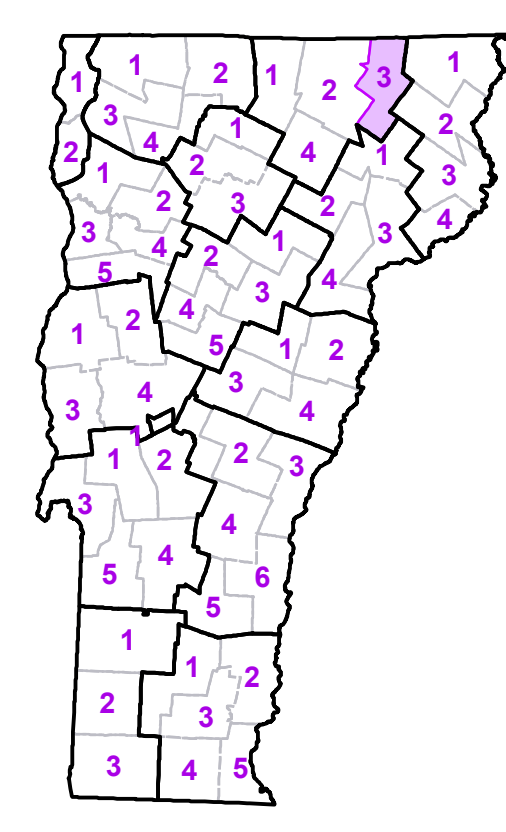


- Interstate
- U.S. Route
- Vermont Route
- Minor Arterial or Collector
- Federal Aid Route
- Principal Arterial
- Minor Arterial
- Major Collector
- Minor Collector-not Federal Aid eligible
- VTrans District Office
- Emergency Response Site
- Interstate
- US Route Divided
- US Route
- State Route Paved
- State Route Unpaved
- Town Highway Paved
- Town Highway Unpaved
- Unimproved or Impassible
- Discontinued Highway
- Town Legal Trail
- Railroad
- Public Land
- Public Airport
- State Boundary
- County Boundary
- Town Boundary
- Village Boundary
- Urban Compact Boundary
- County Subtle
- Fire Station
- Law Enforcement
- Hospital
- Building
- Cemetery
- Localities
- State Capital (Montpelier)
- Bridge or Culvert
- Water Body
- Stream or Brook

B20 / C20 State Bridge or Culvert Identifier
 B20 / C20 Town Bridge or Culvert Identifier

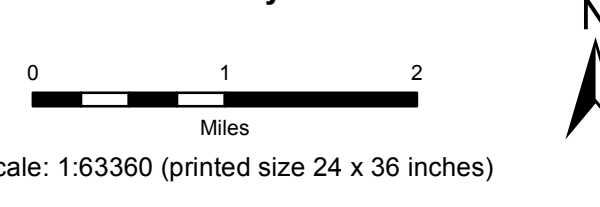
Vermont State Plane Coordinate System
 North American Datum of 1983
 SPCS Zone Identifier: 4400
 Geodetic Reference System 80
 5,000-meter grid, Easting - Northing

TOWN	TOWN	TOWN
Averys Gore	Ferdinand	Sutton
Barton	Glover	Warners Grant
Barton Village	Holland	Warren Gore
Brighton	Irasburg	West Burke Village
Brownington	Island Pond U.C.	Westmore
Burke	Lewis	
Charleston	Morgan	
Coventry	Newark	
Derby	Newport City	
Derby Center Village	Norton	
Derby Line Village	Orleans Village	
East Haven	Sheffield	



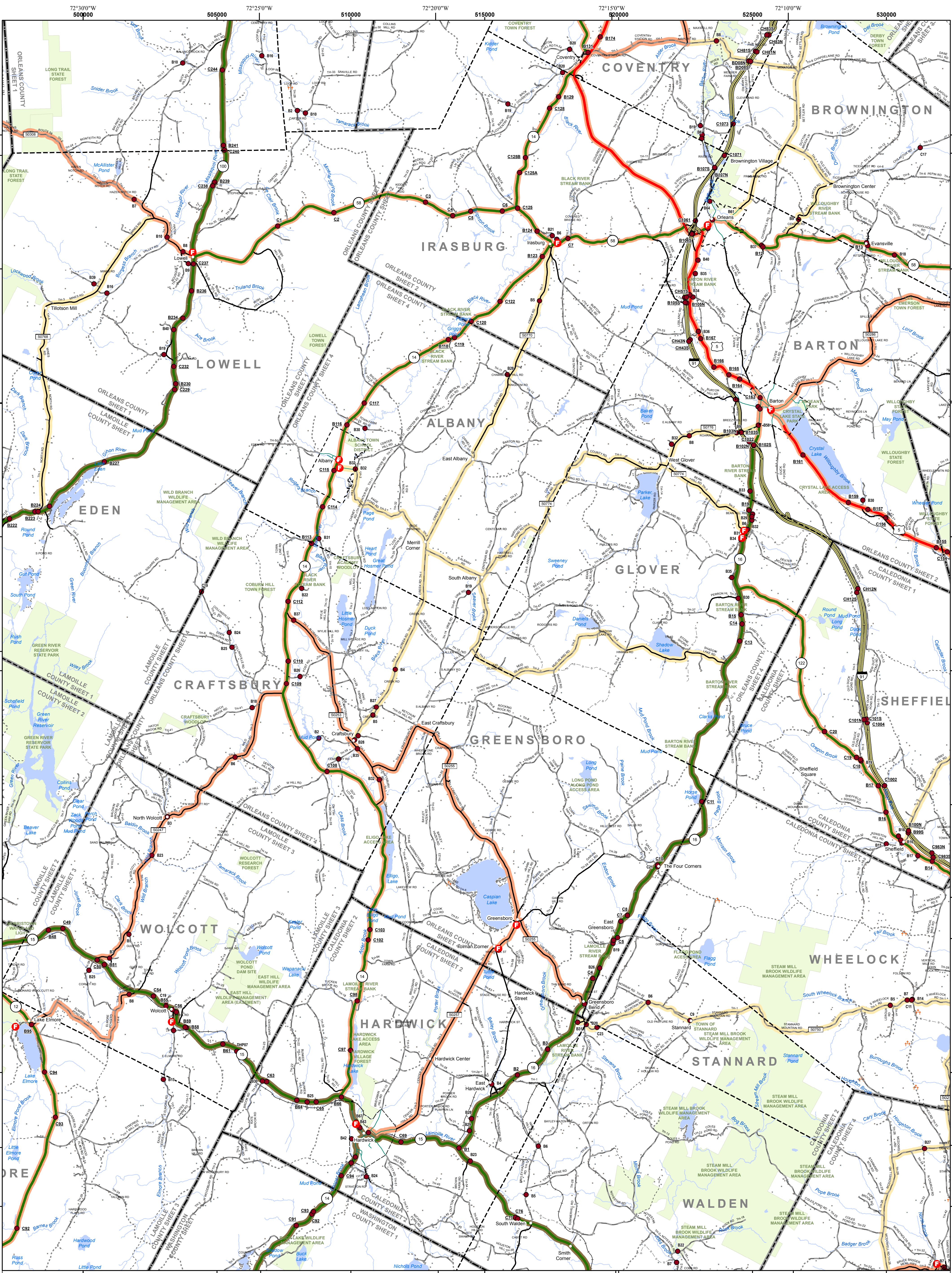
VERMONT COUNTY - TOWN MAP SERIES
ORLEANS COUNTY
SHEET 3 OF 4

Prepared by the
Vermont Agency of Transportation
 Mapping Section
 in cooperation with
U.S. Department of Transportation
 Federal Highway Administration
 July 2015



Contact Information: Vermont Agency of Transportation
 Division of Policy, Planning and Intermodal Development, Mapping Section
 1 National Life Drive, Montpelier, VT 05633-5001, Telephone: 802-828-2600

This map was funded in part through grants from the Federal Highway Administration, U.S. Department of Transportation. The representation of the authors expressed herein do not necessarily state or reflect those of the U.S. Department of Transportation.



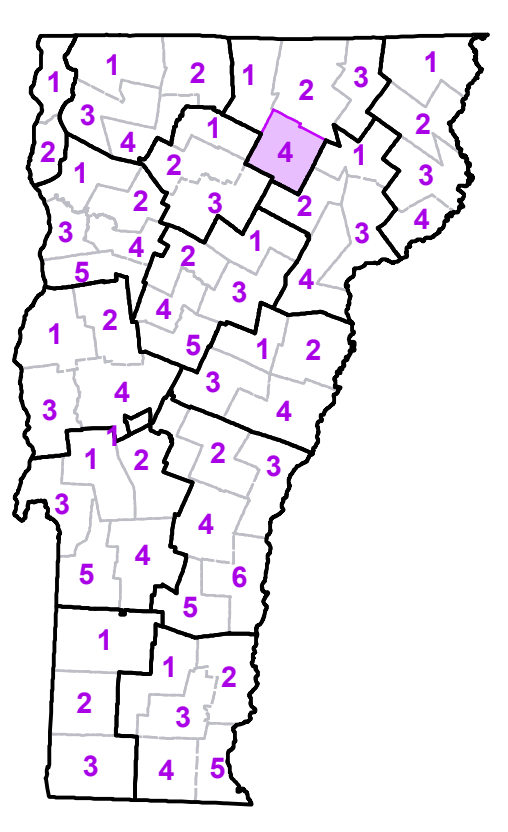
- Interstate
- U.S. Route
- Vermont Route
- Minor Arterial or Collector
- Interstate
- US Route Divided
- US Route
- State Route Paved
- State Route Unpaved
- Town Highway Paved
- Town Highway Unpaved
- Unimproved or Impassible
- Discontinued Highway
- Town Legal Trail
- Railroad

- Federal Aid Route
- Principal Arterial
- Minor Arterial
- Major Collector
- Minor Collector-not Federal Aid eligible
- VTrans District Office
- Emergency Response Site
- Fire Station
- Law Enforcement
- Hospital
- Building
- Cemetery
- Localities
- State Capital (Montpelier)
- Bridge or Culvert
- Water Body
- Stream or Brook

- Public Land
- Public Airport
- State Boundary
- County Boundary
- Town Boundary
- Village Boundary
- Urban Compact Boundary
- County Subtle
- B20 / C20 State Bridge or Culvert Identifier
- B20 / C20 Town Bridge or Culvert Identifier

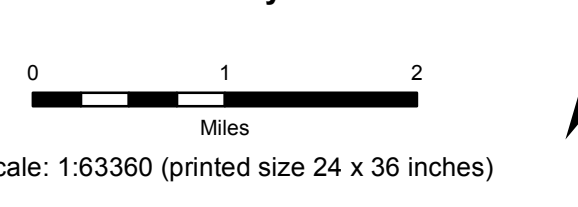
Vermont State Plane Coordinate System
 North American Datum of 1983
 SPCS Zone Identifier: 4400
 Geodetic Reference System 80
 5,000-meter grid, Easting - Northing

TOWN	TOWN	TOWN
Albany	Elmore	Sheffield
Albany Village	Glover	Stannard
Barton	Greensboro	Sutton
Barton Village	Hardwick	Troy
Brownington	Hardwick U.C.	Walden
Cabot	Hyde Park	Westfield
Charleston	Irasburg	Westmore
Coventry	Lowell	Wheelock
Craftsbury	Montgomery	Wolcott
Danville	Morristown	Woodbury
Derby	Newport	
Eden	Orleans Village	



VERMONT COUNTY - TOWN MAP SERIES
ORLEANS COUNTY
SHEET 4 OF 4

Prepared by the
Vermont Agency of Transportation
 Mapping Section
 in cooperation with
U.S. Department of Transportation
 Federal Highway Administration
 July 2015



Contact Information: Vermont Agency of Transportation
 Division of Policy, Planning and Intermodal Development, Mapping Section
 1 National Life Drive, Montpelier, VT 05633-5001, Telephone: 802-828-2600

This map was funded in part through grants from the Federal Highway Administration, U.S. Department of Transportation. The representation of the authors expressed herein do not necessarily state or reflect those of the U.S. Department of Transportation.