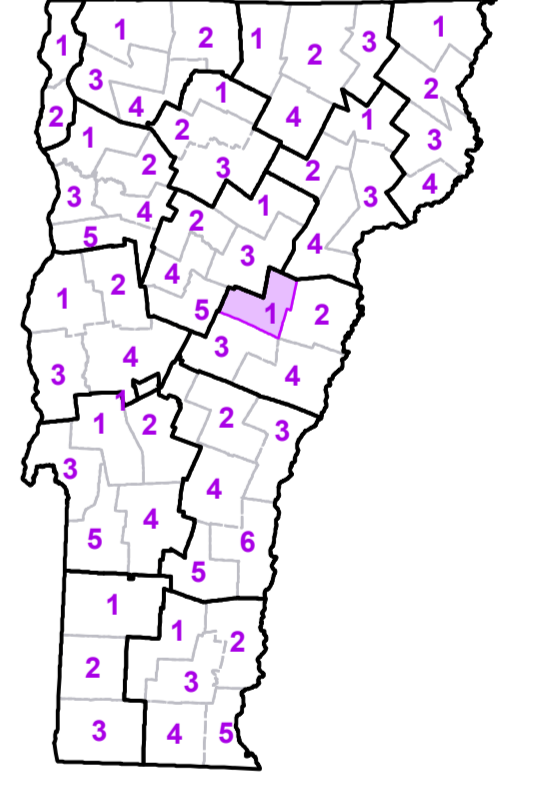


- Interstate
- U.S. Route
- Vermont Route
- Minor Arterial or Collector
- Interstate
- US Route Divided
- US Route
- State Route Paved
- State Route Unpaved
- Town Highway Paved
- Town Highway Unpaved
- Unimproved or Impassible
- Discontinued Highway
- Town Legal Trail
- Railroad
- Federal Aid Route
 - Principal Arterial
 - Minor Arterial
 - Major Collector
 - Minor Collector-not Federal Aid eligible
- VTrans District Office
- Emergency Response Site
 - Fire Station
 - Law Enforcement
 - Hospital
 - Building
 - Cemetery
 - Localities
 - State Capital (Montpelier)
 - Bridge or Culvert
 - Water Body
 - Stream or Brook
 - Public Land
 - Public Airport
 - State Boundary
 - County Boundary
 - Town Boundary
 - Village Boundary
 - Urban Compact Boundary
 - County Subtle

TOWN
Barre
Barre City
Berlin
Bradford
Braintree
Brookfield
Chelsea
Corinth
East Montpelier
Fairlee
Granville
Groton
Groton Village
Marshfield
Middlesex
Montpelier City
Moretown
Newbury
Northfield
Orange
Plainfield
Randolph
Roxbury
Ryeabout
Topsham
Tunbridge
Vershire
Watfield
Washington
West Fairlee
Williamstown

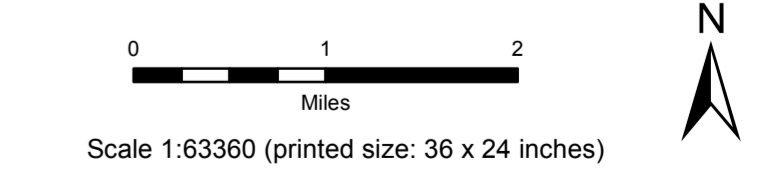
B20 / C20 State Bridge or Culvert Identifier
B20 / C20 Town Bridge or Culvert Identifier

Vermont State Plane Coordinate System
 North American Datum of 1983
 SPCS_Zone_Identifier: 4400
 Geospatial Reference System 80
 5,000-meter grid, Easting - Northing

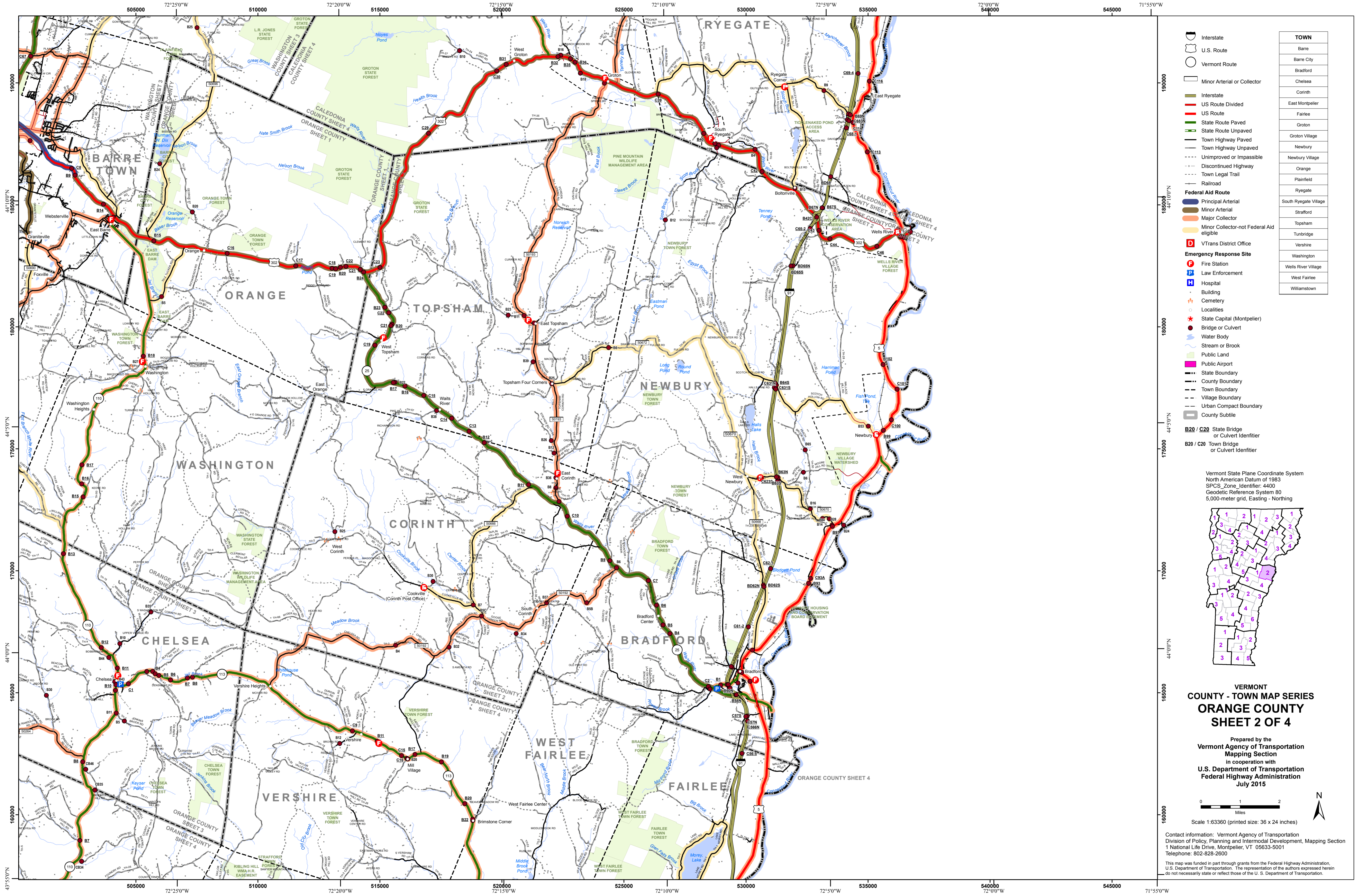


VERMONT COUNTY - TOWN MAP SERIES
ORANGE COUNTY
SHEET 1 OF 4

Prepared by the
Vermont Agency of Transportation
 Mapping Section
 in cooperation with
U.S. Department of Transportation
 Federal Highway Administration
 July 2015



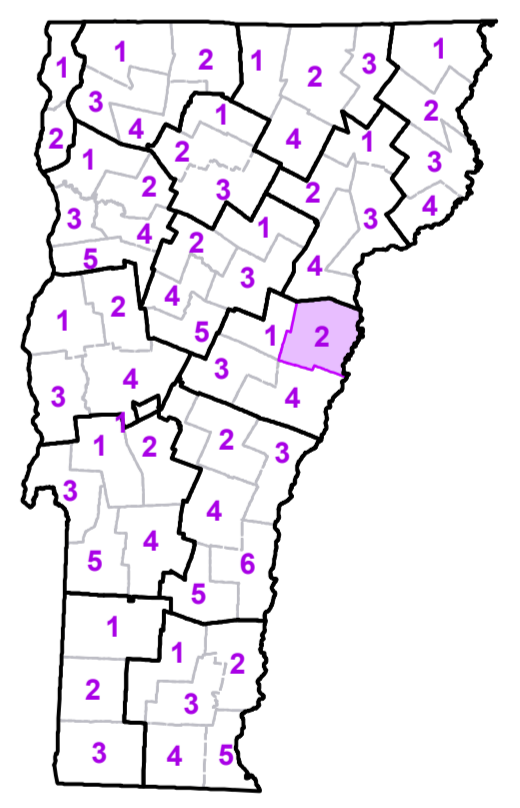
Contact information: Vermont Agency of Transportation
 Division of Policy, Planning and Intermodal Development, Mapping Section
 1 National Life Drive, Montpelier, VT 05633-5001
 Telephone: 802-628-2600
 This map was funded in part through grants from the Federal Highway Administration, U.S. Department of Transportation. The representation of the authors expressed herein do not necessarily state or reflect those of the U. S. Department of Transportation.



- Interstate
- U.S. Route
- Vermont Route
- Minor Arterial or Collector
- Interstate
- US Route Divided
- US Route
- State Route Paved
- State Route Unpaved
- Town Highway Paved
- Town Highway Unpaved
- Unimproved or Impassible
- Discontinued Highway
- Town Legal Trail
- Railroad
- Federal Aid Route
 - Principal Arterial
 - Minor Arterial
 - Major Collector
 - Minor Collector-not Federal Aid eligible
- VTrans District Office
- Emergency Response Site
 - Fire Station
 - Law Enforcement
 - Hospital
 - Building
 - Cemetery
 - Localities
 - State Capital (Montpelier)
 - Bridge or Culvert
 - Water Body
 - Stream or Brook
 - Public Land
 - Public Airport
 - State Boundary
 - County Boundary
 - Town Boundary
 - Village Boundary
 - Urban Compact Boundary
 - County Subtle
- B20 / C20 State Bridge or Culvert Identifier
- B20 / C20 Town Bridge or Culvert Identifier

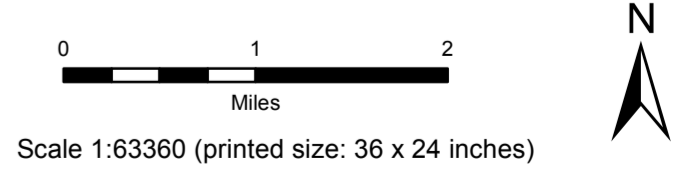
TOWN
Barre
Barre City
Bradford
Chelsea
Corinth
East Montpelier
Fairlee
Groton
Groton Village
Newbury
Newbury Village
Orange
Plainfield
Ryegate
South Ryegate Village
Stratford
Topsham
Tunbridge
Vershire
Washington
Wells River Village
West Fairlee
Williamstown

Vermont State Plane Coordinate System
 North American Datum of 1983
 SPCS_Zone_Identifier: 4400
 Geospatial Reference System 80
 5,000-meter grid, Easting - Northing



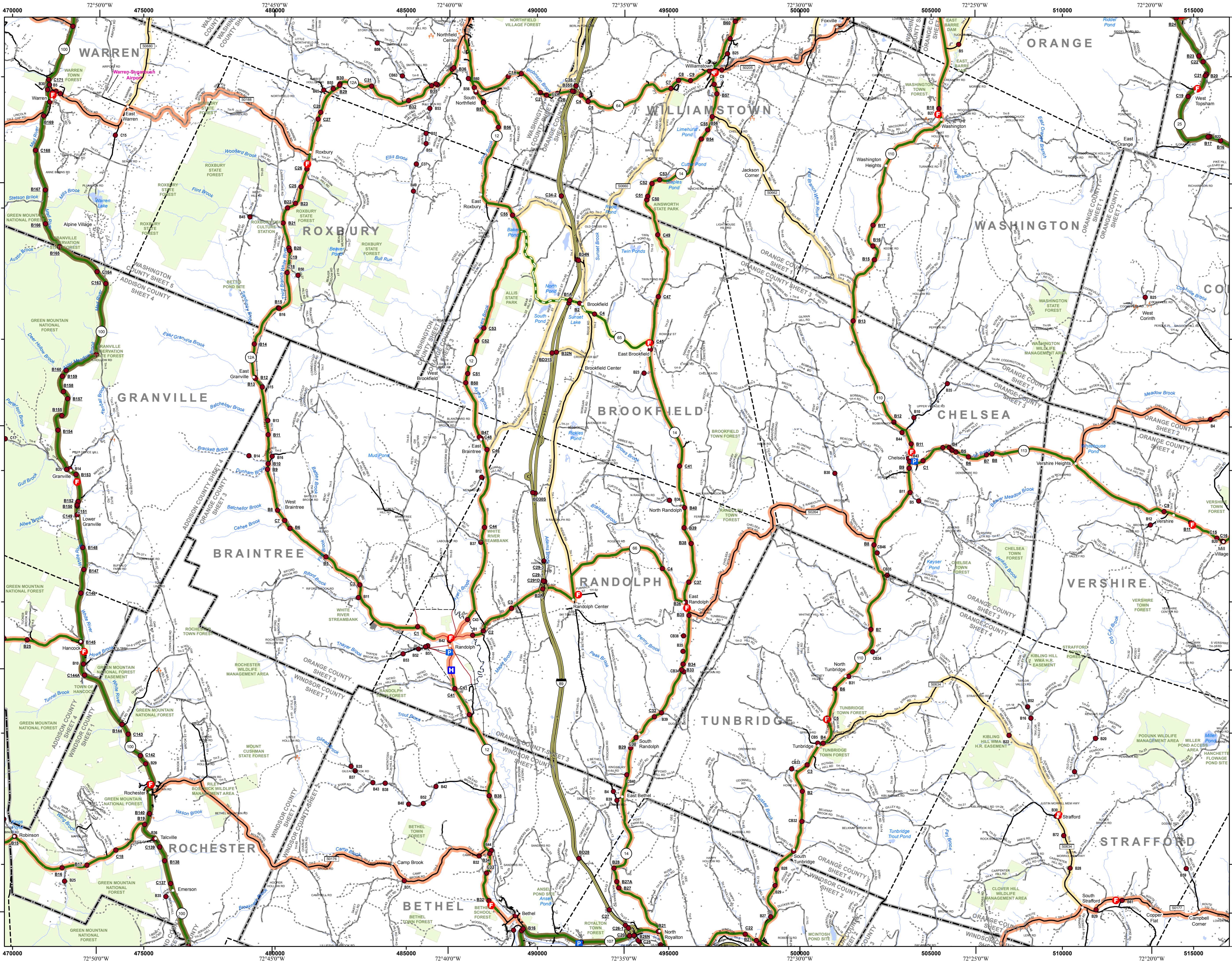
VERMONT
 COUNTY - TOWN MAP SERIES
ORANGE COUNTY
SHEET 2 OF 4

Prepared by the
 Vermont Agency of Transportation
 Mapping Section
 in cooperation with
 U.S. Department of Transportation
 Federal Highway Administration
 July 2015



Contact information: Vermont Agency of Transportation
 Division of Policy, Planning and Intermodal Development, Mapping Section
 1 National Life Drive, Montpelier, VT 05633-5001
 Telephone: 802-628-2600

This map was funded in part through grants from the Federal Highway Administration, U.S. Department of Transportation. The representation of the authors expressed herein do not necessarily state or reflect those of the U. S. Department of Transportation.

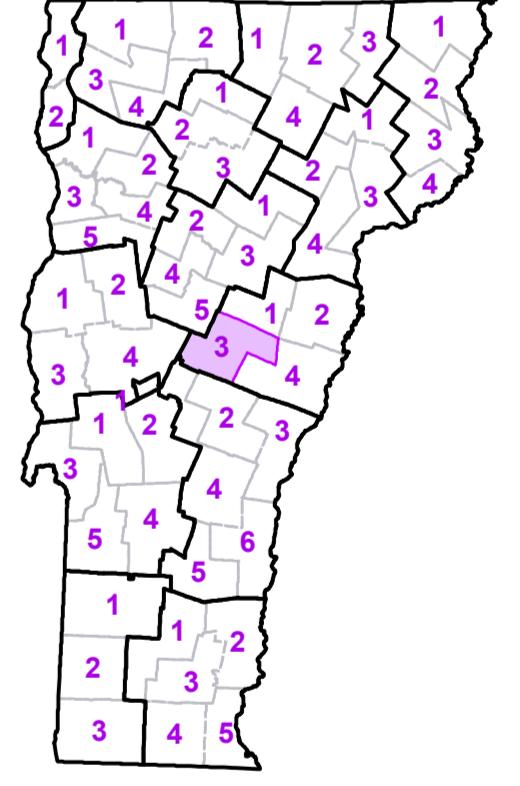


- Interstate
 - U.S. Route
 - Vermont Route
 - Minor Arterial or Collector
 - Interstate
 - US Route Divided
 - US Route
 - State Route Paved
 - State Route Unpaved
 - Town Highway Paved
 - Town Highway Unpaved
 - Unimproved or Impassible
 - Discontinued Highway
 - Town Legal Trail
 - Railroad
- Federal Aid Route**
- Principal Arterial
 - Minor Arterial
 - Major Collector
 - Minor Collector-not Federal Aid eligible
- Emergency Response Site**
- VTrans District Office
 - Fire Station
 - Law Enforcement
 - Hospital
 - Building
 - Cemetery
 - Localities
 - State Capital (Montpelier)
 - Bridge or Culvert
 - Water Body
 - Stream or Brook
 - Public Land
 - Public Airport
 - State Boundary
 - County Boundary
 - Town Boundary
 - Village Boundary
 - Urban Compact Boundary
 - County Subtle

TOWN
Barre
Bethel
Braintree
Brookfield
Chelsea
Chittenden
Corinth
Granville
Hancock
Northfield
Orange
Pittsfield
Randolph
Randolph U.C.
Rochester
Roxbury
Royalton
Sharon
Stockbridge
Stratford
Theford
Topsham
Tunbridge
Vershire
Waitsfield
Warren
Washington
Williamstown

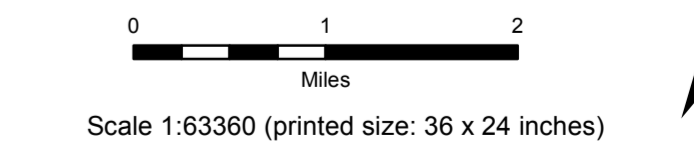
B20 / C20 State Bridge or Culvert Identifier
B20 / C20 Town Bridge or Culvert Identifier

Vermont State Plane Coordinate System
 North American Datum of 1983
 SPCS Zone Identifier 4400
 Geoid Reference System 80
 5,000-meter grid, Easting - Northing

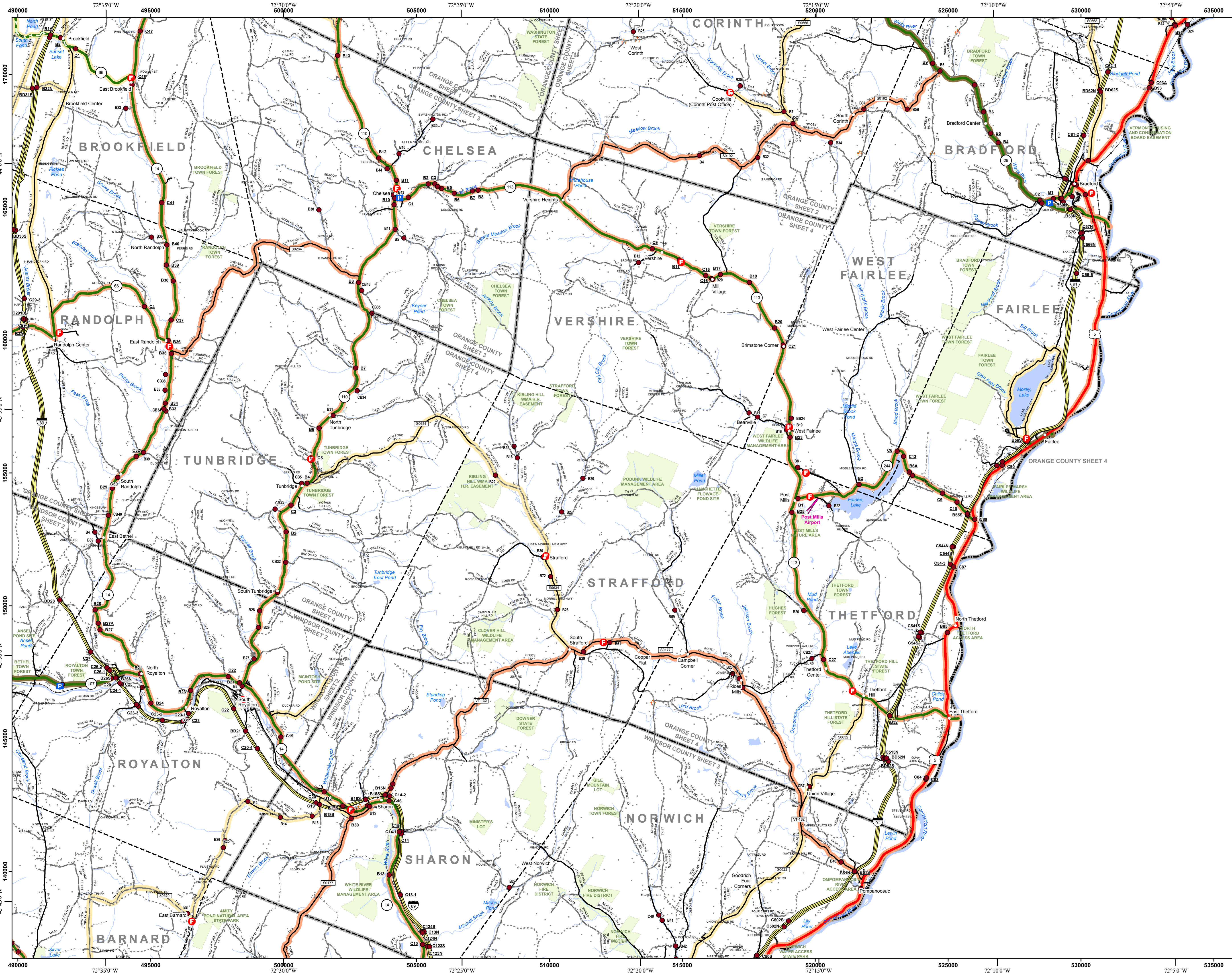


VERMONT COUNTY - TOWN MAP SERIES
ORANGE COUNTY
SHEET 3 OF 4

Prepared by the
Vermont Agency of Transportation
 Mapping Section
 in cooperation with
U.S. Department of Transportation
 Federal Highway Administration
 July 2015



Contact information: Vermont Agency of Transportation
 Division of Policy, Planning and Intermodal Development, Mapping Section
 6 National Life Drive, Montpelier, VT 05633-5001
 Telephone: 802-828-2600
 This map was funded in part through grants from the Federal Highway Administration, U.S. Department of Transportation. The representation of the authors expressed herein do not necessarily state or reflect those of the U. S. Department of Transportation.



- Interstate
- U.S. Route
- Vermont Route
- Minor Arterial or Collector
- Interstate
- US Route Divided
- US Route
- State Route Paved
- State Route Unpaved
- Town Highway Paved
- Town Highway Unpaved
- Unimproved or Impassible
- Discontinued Highway
- Town Legal Trail
- Railroad
- Federal Aid Route
 - Principal Arterial
 - Minor Arterial
 - Major Collector
 - Minor Collector-not Federal Aid eligible
- VTrans District Office
- Emergency Response Site
 - Fire Station
 - Law Enforcement
 - Hospital
 - Building
 - Cemetery
 - Localities
 - State Capital (Montpelier)
 - Bridge or Culvert
 - Water Body
 - Stream or Brook
 - Public Land
 - Public Airport
 - State Boundary
 - County Boundary
 - Town Boundary
 - Village Boundary
 - Urban Compact Boundary
 - County Subtle

TOWN
Barnard
Bethel
Bradford
Brookfield
Chelsea
Corinth
Fairlee
Newbury
Norwich
Pomfret
Randolph
Royalton
Sharon
Stratford
Thetford
Tunbridge
Vershire
Washington
West Fairlee

Vermont State Plane Coordinate System
 North American Datum of 1983
 SPCS_Zone_Identifier: 4400
 Geodetic Reference System: 80
 5,000-meter grid, Easting - Northing

VERMONT COUNTY - TOWN MAP SERIES
ORANGE COUNTY
SHEET 4 OF 4

Prepared by the
 Vermont Agency of Transportation
 Mapping Section
 in cooperation with
 U.S. Department of Transportation
 Federal Highway Administration
 July 2015

0 1 2
 Miles

Scale 1:63360 (printed size: 36 x 24 inches)

Contact information: Vermont Agency of Transportation
 Division of Policy, Planning and Intermodal Development, Mapping Section
 1 National Life Drive, Montpelier, VT 05633-5001
 Telephone: 802-628-2600

This map was funded in part through grants from the Federal Highway Administration, U.S. Department of Transportation. The representation of the authors expressed herein do not necessarily state or reflect those of the U. S. Department of Transportation.