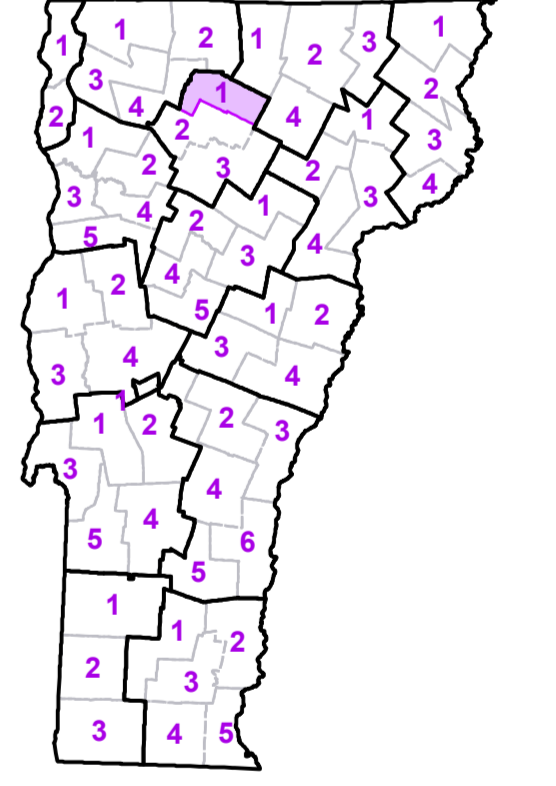


TOWN	
Albany	
Albany Village	
Bakersfield	
Belvidere	
Cambridge	
Cambridge Village	
Eden	
Enosburg	
Fairfield	
Fletcher	
Glover	
Greensboro	
Hardwick	
Hyde Park	
Hyde Park Village	
Irasburg	
Jeffersonville Village	
Johnson	
Johnson Village	
Lowell	
Montgomery	
Morrisville	
Morrisville Village	
Newport	
Sheldon	
Troy	
Underhill	
Waterville	
Westfield	
Wolcott	

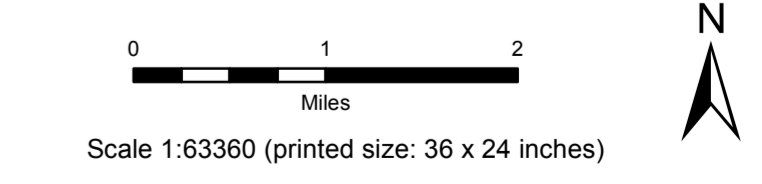
- Interstate
- U.S. Route
- Vermont Route
- Minor Arterial or Collector
- Interstate
- US Route Divided
- US Route
- State Route Paved
- State Route Unpaved
- Town Highway Paved
- Town Highway Unpaved
- Unimproved or Impassible
- Discontinued Highway
- Town Legal Trail
- Railroad
- Federal Aid Route
  - Principal Arterial
  - Minor Arterial
  - Major Collector
  - Minor Collector-not Federal Aid eligible
- VTrans District Office
- Emergency Response Site
  - Fire Station
  - Law Enforcement
  - Hospital
  - Building
  - Cemetery
  - Localities
  - State Capital (Montpelier)
  - Bridge or Culvert
  - Water Body
  - Stream or Brook
  - Public Land
  - Public Airport
  - State Boundary
  - County Boundary
  - Town Boundary
  - Village Boundary
  - Urban Compact Boundary
  - County Subtle
- B20 / C20 State Bridge or Culvert Identifier
- B20 / C20 Town Bridge or Culvert Identifier

Vermont State Plane Coordinate System  
 North American Datum of 1983  
 SPCS\_Zone\_Identifier: 4400  
 Geoidic Reference System 80  
 5,000-meter grid, Easting - Northing



**VERMONT COUNTY - TOWN MAP SERIES**  
**LAMOILLE COUNTY**  
**SHEET 1 OF 3**

Prepared by the  
**Vermont Agency of Transportation**  
 Mapping Section  
 in cooperation with  
**U.S. Department of Transportation**  
 Federal Highway Administration  
 July 2015



Contact information: Vermont Agency of Transportation  
 Division of Policy, Planning and Intermodal Development, Mapping Section  
 1 National Life Drive, Montpelier, VT 05633-5001  
 Telephone: 802-828-2600

This map was funded in part through grants from the Federal Highway Administration, U.S. Department of Transportation. The representation of the authors expressed herein do not necessarily state or reflect those of the U. S. Department of Transportation.

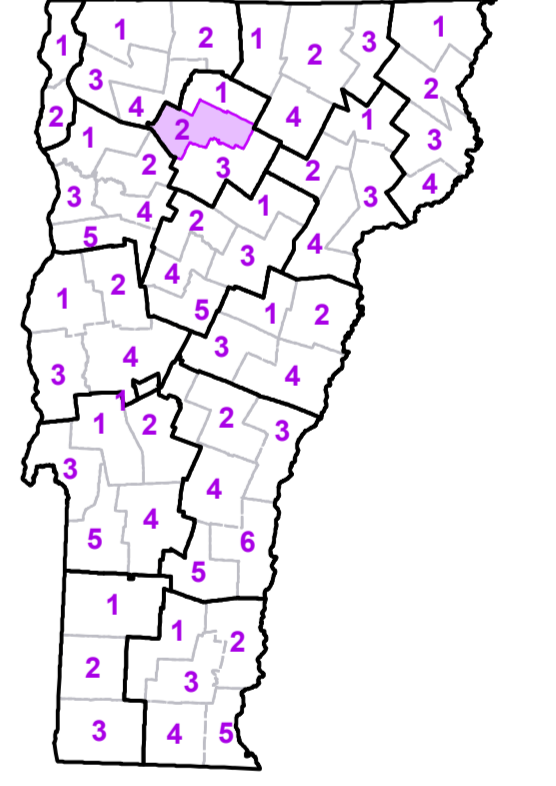


- Interstate
  - U.S. Route
  - Vermont Route
  - Minor Arterial or Collector
  - Interstate
  - US Route Divided
  - US Route
  - State Route Paved
  - State Route Unpaved
  - Town Highway Paved
  - Town Highway Unpaved
  - Unimproved or Impassible
  - Discontinued Highway
  - Town Legal Trail
  - Railroad
- Federal Aid Route**
- Principal Arterial
  - Minor Arterial
  - Major Collector
  - Minor Collector-not Federal Aid eligible
- Emergency Response Site**
- Fire Station
  - Law Enforcement
  - Hospital
  - Building
  - Cemetery
  - Localities
  - State Capital (Montpelier)
  - Bridge or Culvert
  - Water Body
  - Stream or Brook
  - Public Land
  - Public Airport
  - State Boundary
  - County Boundary
  - Town Boundary
  - Village Boundary
  - Urban Compact Boundary
  - County Subtle

TOWN
Albany
Bakersfield
Belvidere
Botton
Cambridge
Cambridge Village
Craftsbury
Eden
Elmore
Essex
Fairfax
Fairfield
Fletcher
Hardwick
Hyde Park
Hyde Park Village
Jeffersonville Village
Jericho
Jericho Village
Johnson
Johnson Village
Lowell
Montgomery
Morristown
Morrisville Village
Stowe
Underhill
Waterville
Westford
Wolcott
Woodbury
Worcester

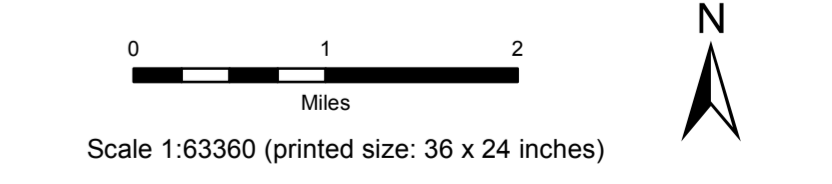
**B20 / C20** State Bridge or Culvert Identifier  
**B20 / C20** Town Bridge or Culvert Identifier

Vermont State Plane Coordinate System  
 North American Datum of 1983  
 SPCS Zone Identifier 4400  
 Geoidic Reference System 80  
 5,000-meter grid, Easting - Northing



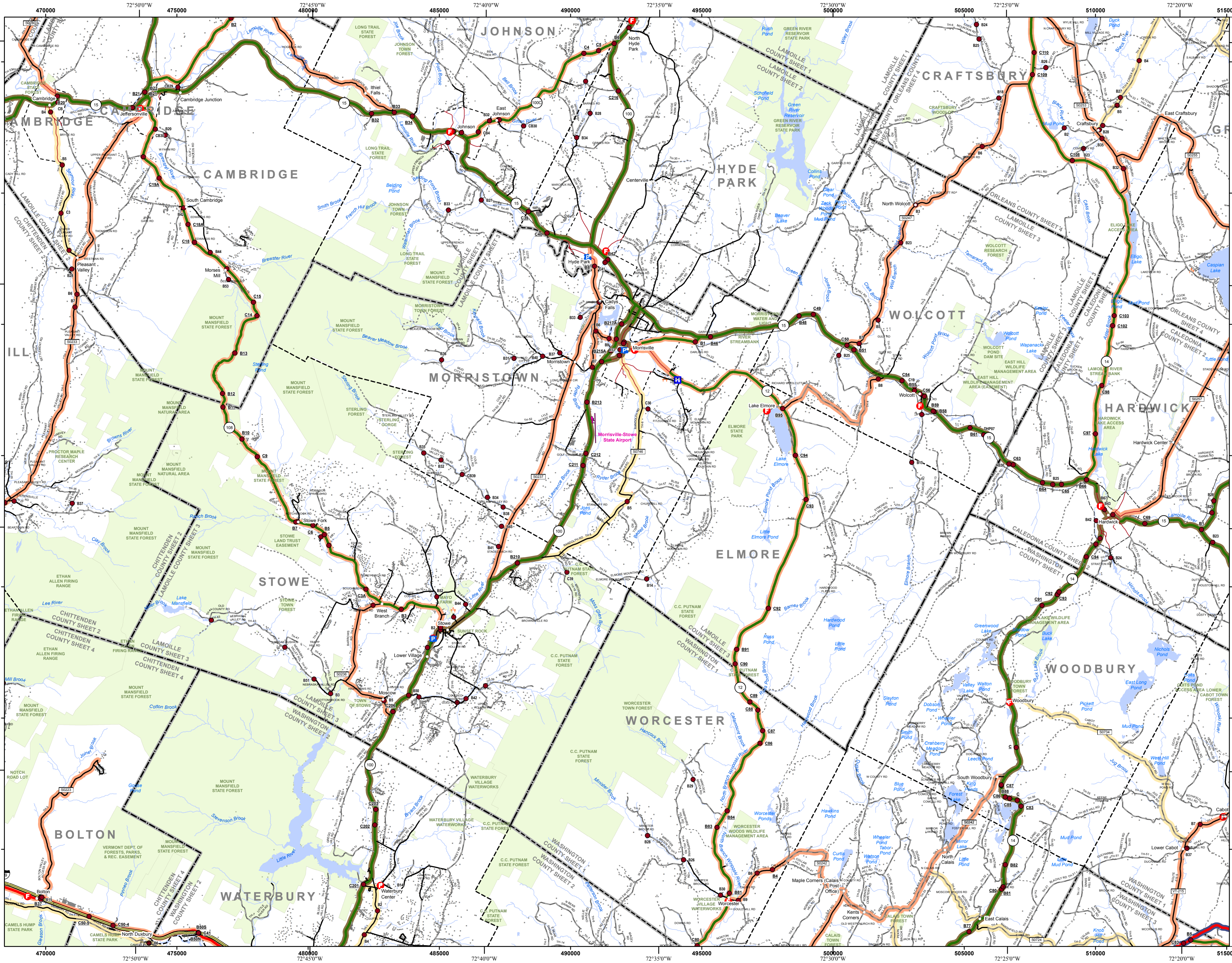
**VERMONT COUNTY - TOWN MAP SERIES**  
**LAMOILLE COUNTY**  
**SHEET 2 OF 3**

Prepared by the  
**Vermont Agency of Transportation**  
 Mapping Section  
 in cooperation with  
**U.S. Department of Transportation**  
 Federal Highway Administration  
 July 2015



Contact information: Vermont Agency of Transportation  
 Division of Policy, Planning and Intermodal Development, Mapping Section  
 National Life Drive, Montpelier, VT 05633-5001  
 Telephone: 802-828-2600

This map was funded in part through grants from the Federal Highway Administration, U.S. Department of Transportation. The representation of the authors expressed herein do not necessarily state or reflect those of the U. S. Department of Transportation.



- Interstate
- U.S. Route
- Vermont Route
- Minor Arterial or Collector
- Interstate
- US Route Divided
- US Route
- State Route Paved
- State Route Unpaved
- Town Highway Paved
- Town Highway Unpaved
- Unimproved or Impassible
- Discontinued Highway
- Town Legal Trail
- Railroad

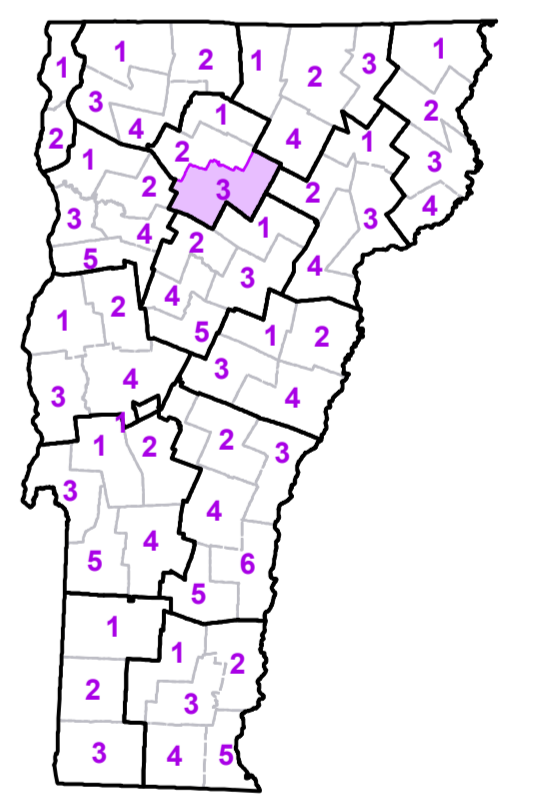
- Federal Aid Route**
- Principal Arterial
- Minor Arterial
- Major Collector
- Minor Collector-not Federal Aid eligible

- VTrans District Office
- Emergency Response Site
- Fire Station
- Law Enforcement
- Hospital
- Building
- Cemetery
- Localities
- State Capital (Montpelier)
- Bridge or Culvert
- Water Body
- Stream or Brook
- Public Land
- Public Airport
- State Boundary
- County Boundary
- Town Boundary
- Village Boundary
- Urban Compact Boundary
- County Subline

TOWN	
Albany	
Bolton	
Cabot	
Calais	
Cambridge	
Cambridge Village	
Craftsbury	
Duxbury	
Eden	
Elmore	
Fletcher	
Glover	
Greensboro	
Hardwick	
Hardwick U.C.	
Hyde Park	
Hyde Park Village	
Jeffersonville Village	
Jericho	
Johnson	
Johnson Village	
Marshfield	
Middlesex	
Morristown	
Morrisville Village	
Stowe	
Underhill	
Walden	
Waterbury	
Waterville	
Wolcott	
Woodbury	
Worcester	

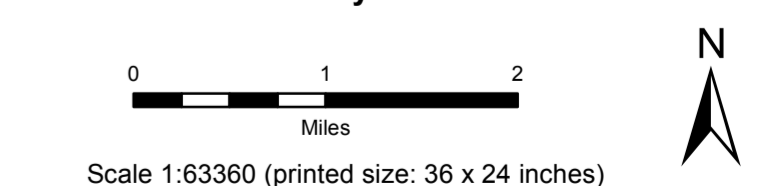
**B20 / C20** State Bridge or Culvert Identifier  
**B20 / C20** Town Bridge or Culvert Identifier

Vermont State Plane Coordinate System  
 North American Datum of 1983  
 SPCS Zone Identifier: 4400  
 Geoid Reference System 80  
 5,000-meter grid, Easting - Northing



**VERMONT COUNTY - TOWN MAP SERIES**  
**LAMOILLE COUNTY**  
**SHEET 3 OF 3**

Prepared by the  
**Vermont Agency of Transportation**  
 Mapping Section  
 in cooperation with  
**U.S. Department of Transportation**  
 Federal Highway Administration  
 July 2015



Contact information: Vermont Agency of Transportation  
 Division of Policy, Planning and Intermodal Development, Mapping Section  
 1 National Life Drive, Montpelier, VT 05633-5001  
 Telephone: 802-828-2600  
 This map was funded in part through grants from the Federal Highway Administration, U.S. Department of Transportation. The representation of the authors expressed herein do not necessarily state or reflect those of the U. S. Department of Transportation.